

WAAS CH 70333 W15A	APP CRS 158°	Rwy Idg TDZE Apt Elev	4500 1391 1394
--	------------------------	-----------------------------	---

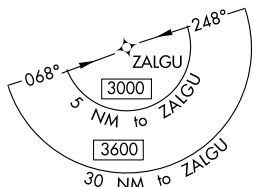
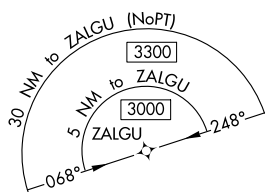
RNAV (GPS) RWY 15

GLENWOOD MUNI (GHW)

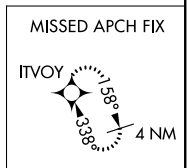
⚠ For uncompensated Baro-VNAV systems, LNAV/VNAV NA below -17°C (-2°F) or above 54°C (130°F). DME/DME RNP-0.3 NA. Helicopter visibility reduction below 1 SM NA. When local altimeter setting not received, use Alexandria altimeter setting and increase DA 36 feet and all MDA 40 feet. Baro-VNAV and VDP NA when using Alexandria altimeter setting. Circling NA to Rwy's 5/23.

MISSED APPROACH:
Climb to 3000 direct ITVOY and hold.

AWOS-3 118.925	MINNEAPOLIS CENTER 126.1 269.2	GCO 121.725	CTAF 122.9 0
--------------------------	--	-----------------------	------------------------



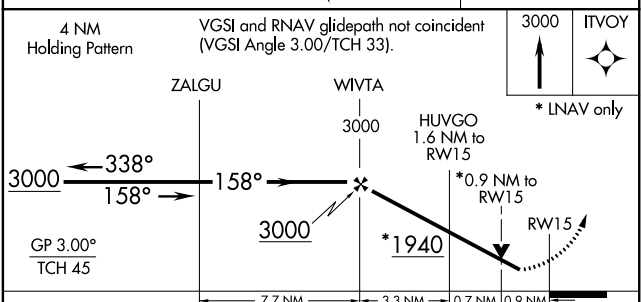
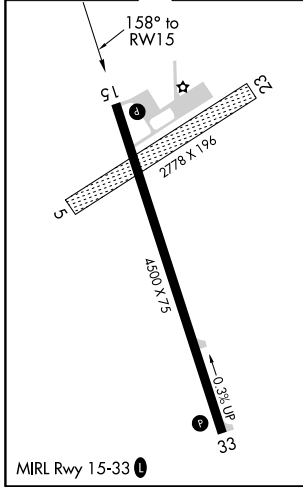
▲ 2545



NC-1, 16 JUL 2020 to 13 AUG 2020

NC-1, 16 JUL 2020 to 13 AUG 2020

ELEV 1394	TDZE 1391
-----------	-----------



CATEGORY	A	B	C	D
LPV DA		1641-1	250 (300-1)	NA
LNAV/ VNAV DA		1641-1	250 (300-1)	NA
LNAV MDA		1720-1	329 (400-1)	NA
CIRCLING	1840-1 446 (500-1)	1860-1 466 (500-1)	1860-1½ 466 (500-1½)	NA

WAAS CH 77931 W33A	APP CRS 338°	Rwy Idg TDZE Apt Elev	4500 1384 1394
--	------------------------	-----------------------------	---

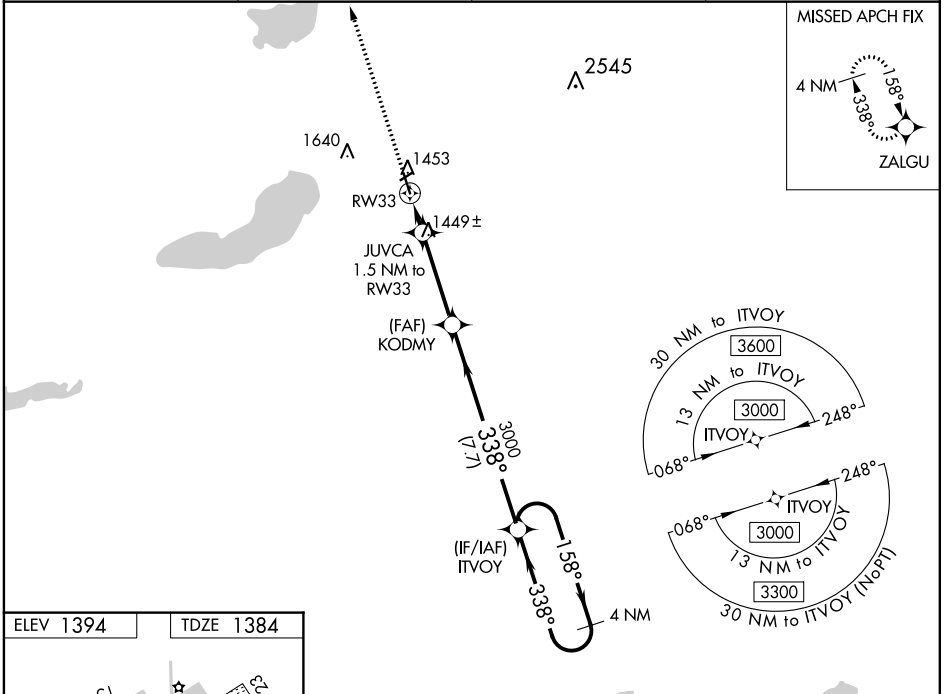
RNAV (GPS) RWY 33

GLENWOOD MUNI (GHW)

⚠ Baro-VNAV NA when using Alexandria altimeter setting. For uncompensated Baro-VNAV systems, LNAV/VNAV NA below -17°C (2°F) or above 54°C (130°F). DME/DME RNP-0.3 NA. Helicopter visibility reduction below 1 SM NA. When local altimeter setting not received, use Alexandria altimeter setting and increase all DA 36 feet and all MDA 40 feet. Circling NA to Rwy 5/23.

MISSED APPROACH:
Climb to 3000 direct ZALGU and hold.

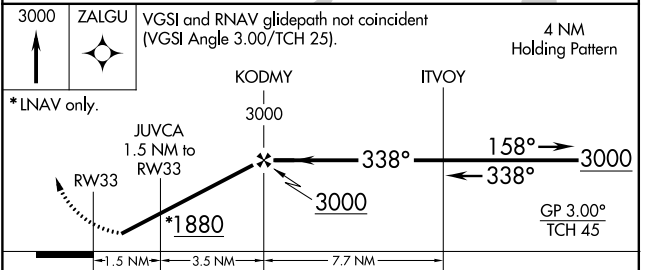
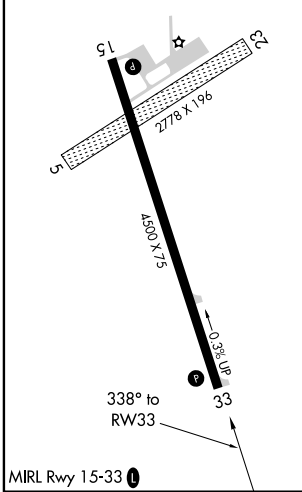
AWOS-3 118.925	MINNEAPOLIS CENTER 126.1 269.2	GCO 121.725	CTAF 122.9 0
--------------------------	--	-----------------------	-------------------------------



NC-1, 16 JUL 2020 to 13 AUG 2020

NC-1, 16 JUL 2020 to 13 AUG 2020

ELEV 1394	TDZE 1384
-----------	-----------



CATEGORY	A	B	C	D
LPV DA	1634-1	250 (300-1)		NA
LNAV/VNAV DA	1634-1	250 (300-1)		NA
LNAV MDA	1700-1	316 (400-1)		NA
CIRCLING	1840-1 446 (500-1)	1860-1 466 (500-1)	1860-1½ 466 (500-1½)	NA

VOR/DME AXN 112.8 Chan 75	APP CRS 003°	Rwy Idg 4500 TDZE 1384 Apt Elev 1394
--	------------------------	---

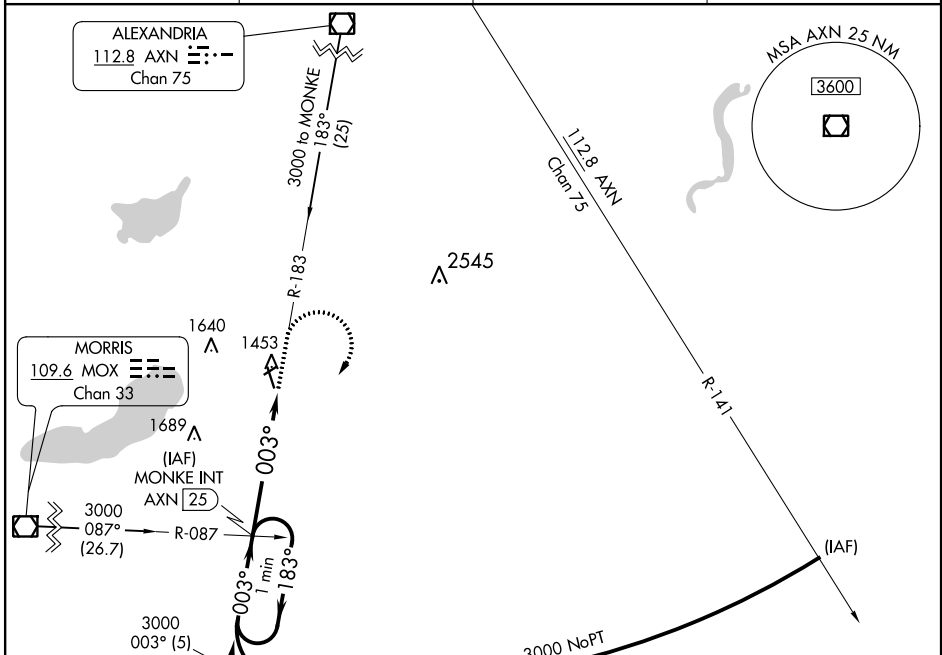
VOR RWY 33

GLENWOOD MUNI (GHW)

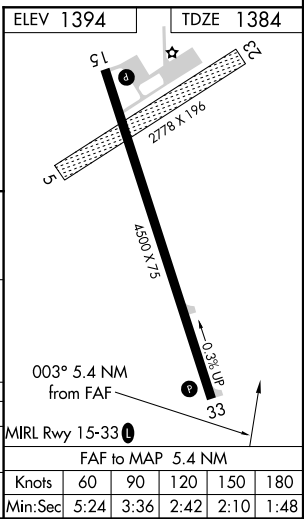
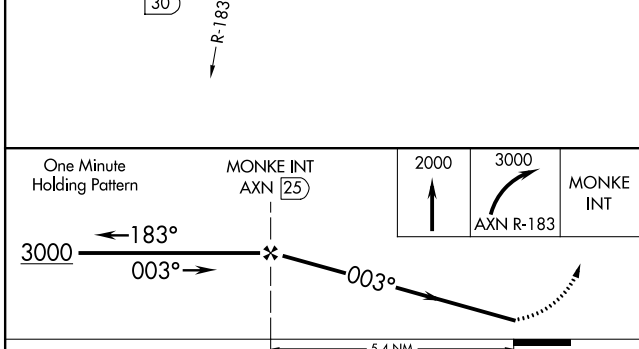
▼ Circling to Rwy 5/23 NA. When local altimeter setting not received, use Alexandria altimeter setting and increase all MDA 40 feet and S-33 Cat C visibility ¼ mile. Rwy 33 helicopter visibility reduction below ¾ SM NA.

MISSED APPROACH: Climb to 2000, then climbing right turn to 3000 via AXN R-183 to MONKE INT/25 DME and hold.

AWOS-3 118.925	MINNEAPOLIS CENTER 126.1 269.2	GCO 121.725	CTAF 122.90
--------------------------	--	-----------------------	-----------------------



ELEV 1394	TDZE 1384
-----------	-----------



CATEGORY	A	B	C	D
S-33	1880-1	496 (500-1)	1880-1¼ 496 (500-1¼)	NA
CIRCLING	1880-1	486 (500-1)	1880-1½ 486 (500-1½)	NA

NC-1, 16 JUL 2020 to 13 AUG 2020

NC-1, 16 JUL 2020 to 13 AUG 2020