

WAAS CH <b>70333</b> <b>W15A</b>	APP CRS <b>158°</b>	Rwy Idg TDZE Apt Elev	<b>4500</b> <b>1391</b> <b>1394</b>
----------------------------------------	------------------------	-----------------------------	-------------------------------------------

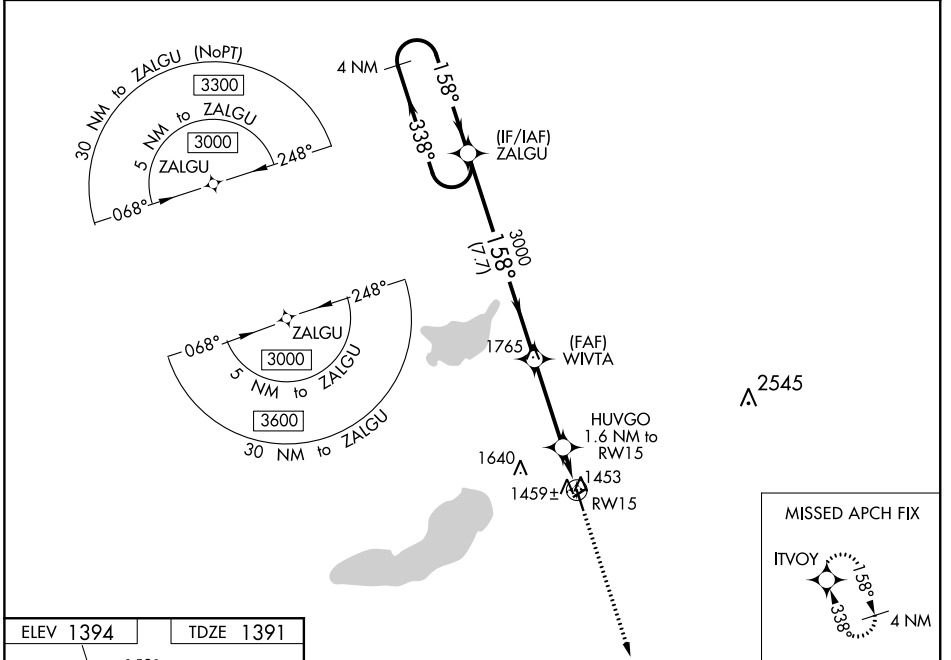
# RNAV (GPS) RWY 15

GLENWOOD MUNI (GHW)

**⚠** For uncompensated Baro-VNAV systems, LNAV/VNAV NA below -17°C (-2°F) or above 54°C (130°F). DME/DME RNP-0.3 NA. Helicopter visibility reduction below 1 SM NA. When local altimeter setting not received, use Alexandria altimeter setting and increase DA 36 feet and all MDA 40 feet. Baro-VNAV and VDP NA when using Alexandria altimeter setting. Circling NA to Rwy's 5/23.

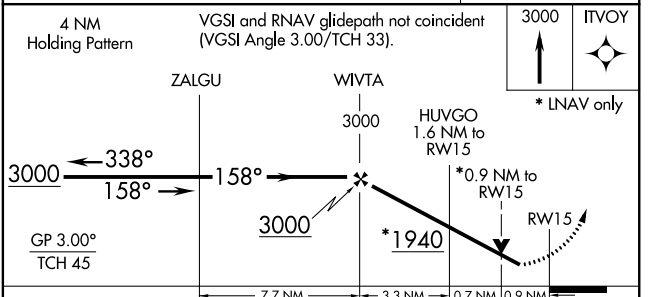
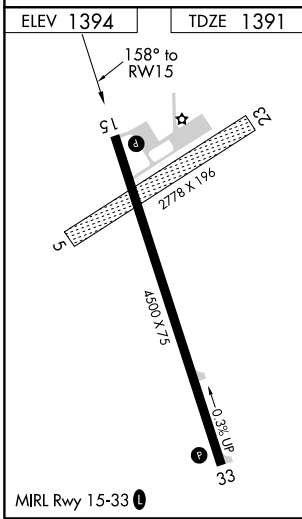
**MISSED APPROACH:**  
Climb to 3000 direct ITVOY and hold.

AWOS-3 <b>118.925</b>	MINNEAPOLIS CENTER <b>126.1 269.2</b>	GCO <b>121.725</b>	CTAF <b>122.9 0</b>
--------------------------	------------------------------------------	-----------------------	------------------------



NC-1, 16 JUL 2020 to 13 AUG 2020

NC-1, 16 JUL 2020 to 13 AUG 2020



CATEGORY	A	B	C	D
LPV DA		1641-1	250 (300-1)	NA
LNAV/ VNAV DA		1641-1	250 (300-1)	NA
LNAV MDA		1720-1	329 (400-1)	NA
CIRCLING	1840-1 446 (500-1)	1860-1 466 (500-1)	1860-1½ 466 (500-1½)	NA

WAAS CH <b>77931</b> <b>W33A</b>	APP CRS <b>338°</b>	Rwy Idg TDZE Apt Elev	<b>4500</b> <b>1384</b> <b>1394</b>
----------------------------------------	------------------------	-----------------------------	-------------------------------------------

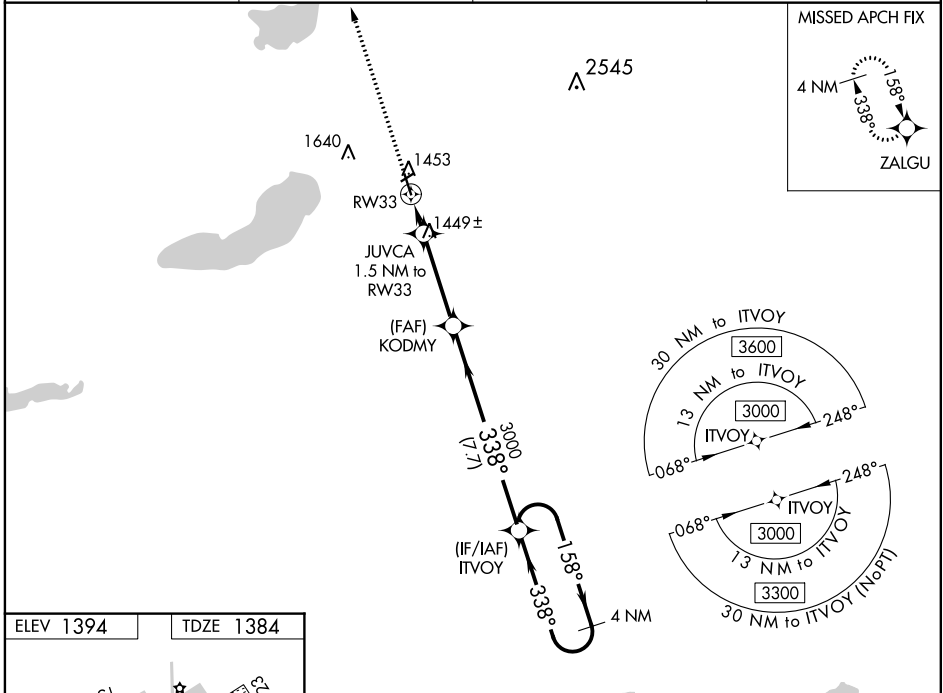
# RNAV (GPS) RWY 33

GLENWOOD MUNI (GHW)

**⚠** Baro-VNAV NA when using Alexandria altimeter setting. For uncompensated Baro-VNAV systems, LNAV/VNAV NA below -17°C (2°F) or above 54°C (130°F). DME/DME RNP-0.3 NA. Helicopter visibility reduction below 1 SM NA. When local altimeter setting not received, use Alexandria altimeter setting and increase all DA 36 feet and all MDA 40 feet. Circling NA to Rwy 5/23.

**MISSED APPROACH:**  
Climb to 3000 direct ZALGU and hold.

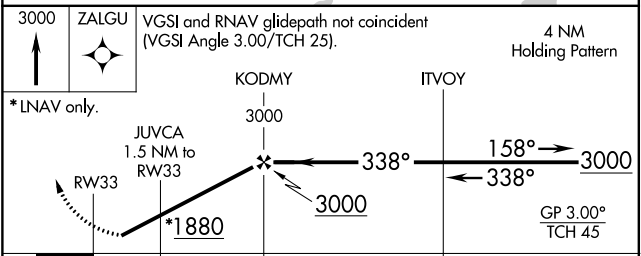
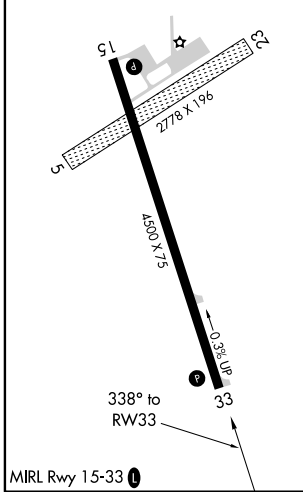
AWOS-3 <b>118.925</b>	MINNEAPOLIS CENTER <b>126.1 269.2</b>	GCO <b>121.725</b>	CTAF <b>122.9</b>
--------------------------	------------------------------------------	-----------------------	----------------------



NC-1, 16 JUL 2020 to 13 AUG 2020

NC-1, 16 JUL 2020 to 13 AUG 2020

ELEV 1394	TDZE 1384
-----------	-----------



CATEGORY	A	B	C	D
LPV DA		1634-1	250 (300-1)	NA
LNAV/VNAV DA		1634-1	250 (300-1)	NA
LNAV MDA		1700-1	316 (400-1)	NA
CIRCLING	1840-1 446 (500-1)	1860-1 466 (500-1)	1860-1½ 466 (500-1½)	NA

VOR/DME AXN <b>112.8</b> Chan 75	APP CRS <b>003°</b>	Rwy Idg TDZE <b>1384</b> Apt Elev <b>1394</b>
----------------------------------------	------------------------	-----------------------------------------------------

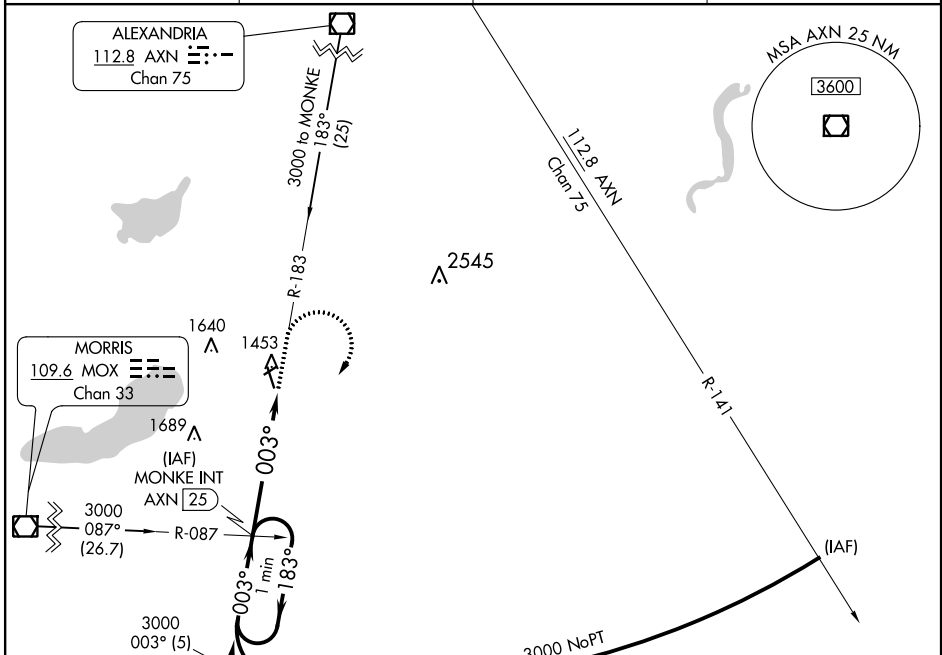
# VOR RWY 33

GLENWOOD MUNI (GHW)

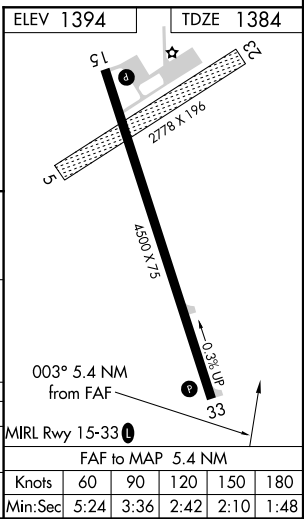
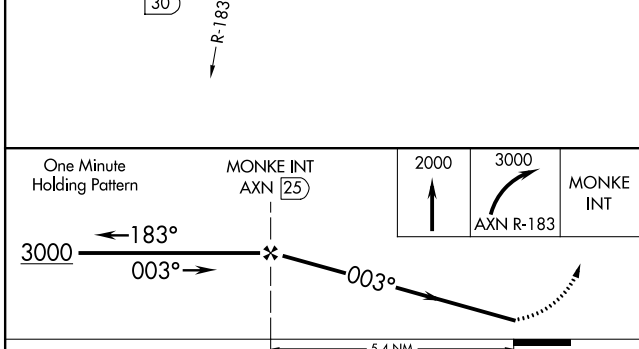
**▼** Circling to Rwy 5/23 NA. When local altimeter setting not received, use Alexandria altimeter setting and increase all MDA 40 feet and S-33 Cat C visibility ¼ mile. Rwy 33 helicopter visibility reduction below ¾ SM NA.

MISSED APPROACH: Climb to 2000, then climbing right turn to 3000 via AXN R-183 to MONKE INT/25 DME and hold.

AWOS-3 <b>118.925</b>	MINNEAPOLIS CENTER <b>126.1 269.2</b>	GCO <b>121.725</b>	CTAF <b>122.90</b>
--------------------------	------------------------------------------	-----------------------	-----------------------



ELEV 1394	TDZE 1384
-----------	-----------



CATEGORY	A	B	C	D
S-33	1880-1	496 (500-1)	1880-1¼ 496 (500-1¼)	NA
CIRCLING	1880-1	486 (500-1)	1880-1½ 486 (500-1½)	NA

NC-1, 16 JUL 2020 to 13 AUG 2020

NC-1, 16 JUL 2020 to 13 AUG 2020

INSTRUMENT APPROACH PROCEDURE CHARTS

**A** IFR ALTERNATE AIRPORT MINIMUMS

Standard alternate minimums for non-precision approaches and approaches with vertical guidance [NDB, VOR, LOC, TACAN, LDA, SDF, VOR/DME, ASR, RNAV (GPS) or RNAV (RNP)] are 800-2. Standard alternate minimums for precision approaches (ILS, PAR, or GLS) are 600-2. Airports within this geographical area that require alternate minimums other than standard or alternate minimums with restrictions are listed below. NA - means alternate minimums are not authorized due to unmonitored facility, absence of weather reporting service, or lack of adequate navigation coverage. Civil pilots see FAR 91. IFR Alternate Minimums: Ceiling and Visibility Minimums not applicable to USA/USN/USAF. Pilots must review the IFR Alternate Minimums Notes for alternate airfield suitability.

NAME	ALTERNATE MINIMUMS
<b>ABERDEEN, SD</b>	
ABERDEEN	
RGNL (ABR).....	ILS or LOC Rwy 31 <sup>1</sup>
	RNAV (GPS) Rwy 13 <sup>2</sup>
	RNAV (GPS) Rwy 17 <sup>2</sup>
	RNAV (GPS) Rwy 31 <sup>2</sup>
	RNAV (GPS) Rwy 35 <sup>2</sup>
	VOR Rwy 13 <sup>2</sup>
	VOR Rwy 31 <sup>2</sup>

<sup>1</sup>LOC, Category D, 900-2½.  
<sup>2</sup>Category D, 900-2½.

<b>AITKIN, MN</b>	
AITKIN MUNI-STEVE KURTZ	
FIELD (AIT).....	RNAV (GPS) Rwy 16
	RNAV (GPS) Rwy 34
NA when local weather not available.	

<b>ALBERT LEA, MN</b>	
ALBERT LEA	
MUNI (AEL).....	RNAV (GPS) Rwy 17
	RNAV (GPS) Rwy 35
	VOR RWY 17
NA when local weather not available.	

<b>ALEXANDRIA, MN</b>	
CHANDLER	
FIELD (AXN).....	RNAV (GPS) Rwy 22
	RNAV (GPS) Rwy 31
NA when local weather not available.	

<b>APPLETON, MN</b>	
APPLETON	
MUNI (AQP).....	RNAV (GPS) Rwy 13
NA when local weather not available.	

<b>AUSTIN, MN</b>	
AUSTIN	
MUNI (AUM).....	RNAV (GPS) Rwy 17
	RNAV (GPS) Rwy 35
NA when local weather not available.	

NAME	ALTERNATE MINIMUMS
<b>BAUDETTE, MN</b>	
BAUDETTE	
INTL (BDE).....	RNAV (GPS) Rwy 12
	RNAV (GPS) Rwy 30 <sup>1</sup>
NA when local weather not available.	
<sup>1</sup> Categories A, B, C, D, 900-4.	

<b>BEMIDJI, MN</b>	
BEMIDJI	
RGNL (BJI).....	RNAV (GPS) Rwy 13
	RNAV (GPS) Rwy 25
	RNAV (GPS) Rwy 31
NA when local weather not available.	

<b>BENSON, MN</b>	
BENSON	
MUNI (BBB).....	RNAV (GPS) Rwy 14
	RNAV (GPS) Rwy 32
NA when local weather not available.	

<b>BIGFORK, MN</b>	
BIGFORK	
MUNI (FOZ).....	RNAV (GPS) Rwy 33
NA when local weather not available.	

<b>BISMARCK, ND</b>	
BISMARCK	
MUNI (BIS).....	ILS or LOC Rwy 13 <sup>12</sup>
	ILS or LOC Rwy 31 <sup>12</sup>
	RADAR-1 <sup>1</sup>
	RNAV (GPS) Rwy 3 <sup>3</sup>
	RNAV (GPS) Rwy 13 <sup>3</sup>
	RNAV (GPS) Rwy 21 <sup>3</sup>
	RNAV (GPS) Rwy 31 <sup>3</sup>
	VOR-A <sup>3</sup>

<sup>1</sup>NA when control tower closed.  
<sup>2</sup>LOC, Category C, 800-2¼, Category D, 800-2½.  
<sup>3</sup>Category C, 800-2¼, Category D, 800-2½.

<b>BOWMAN, ND</b>	
BOWMAN	
RGNL (BWW).....	RNAV (GPS) Rwy 13
	RNAV (GPS) Rwy 31
NA when local weather not available.	

16 JUL 2020 to 13 AUG 2020

16 JUL 2020 to 13 AUG 2020

20198

NAME ALTERNATE MINIMUMS

**BRAINERD, MN**

BRAINERD LAKES  
RGNL (BRD).....**ILS or LOC Rwy 23<sup>1</sup>**  
**RNAV (GPS) Rwy 5**  
**RNAV (GPS) Rwy 23**  
**RNAV (GPS) Rwy 34**

NA when local weather not available.

<sup>1</sup>Category D, 700-2.

**BROOKINGS, SD**

BROOKINGS  
RGNL (BKX).....**RNAV (GPS) Rwy 12**  
**RNAV (GPS) Rwy 30**

NA when local weather not available.

Category D, 800-2¼.

**BUFFALO, MN**

BUFFALO  
MUNI (CFE).....**VOR-A**

NA when local weather not available.

**CAMBRIDGE, MN**

CAMBRIDGE  
MUNI (CBG).....**RNAV (GPS) Rwy 16**  
**RNAV (GPS) Rwy 34**

NA when local weather not available.

**CAMP RIPLEY, MN**

RAY S. MILLER (KRYM).....**ILS OR LOC Rwy 31**  
LOC, CAT D, 1000-3.

NA when control tower closed.

**CANBY, MN**

MYERS FIELD (CNB).....**RNAV (GPS) Rwy 12**  
**RNAV (GPS) Rwy 30**

NA when local weather not available.

**CARRINGTON, ND**

CARRINGTON  
MUNI (46D).....**RNAV (GPS) Rwy 31**

NA when local weather not available.

**CAVALIER, ND**

CAVALIER  
MUNI (2C8).....**RNAV (GPS) Rwy 34**

NA when local weather not available.

**CLOQUET, MN**

CLOQUET CARLTON  
COUNTY (COQ).....**RNAV (GPS) Rwy 17**  
**RNAV (GPS) Rwy 35**

NA when local weather not available.

**COOK, MN**

COOK MUNI (CQM).....**RNAV (GPS) Rwy 13**  
**RNAV (GPS) Rwy 31**

NA when local weather not available.

NAME ALTERNATE MINIMUMS

**CROOKSTON, MN**

CROOKSTON MUNI-KIRKWOOD  
FIELD (CKN).....**RNAV (GPS) Rwy 13**  
**RNAV (GPS) Rwy 31**  
**VOR/DME Rwy 13**

NA when local weather not available.

**CROSBY, ND**

CROSBY  
MUNI (D50).....**RNAV (GPS) Rwy 30**

NA when local weather not available.

Category D, 800-2¼.

**DETROIT LAKES, MN**

DETROIT LAKES-WETHING  
FIELD (DTL).....**RNAV (GPS) Rwy 13**  
**RNAV (GPS) Rwy 31**

NA when local weather not available.

Category D, 800-2¼.

**DEVILS LAKE, ND**

DEVILS LAKE  
RGNL (DVL).....**RNAV (GPS) Rwy 3<sup>2</sup>**  
**RNAV (GPS) Rwy 13<sup>2</sup>**  
**RNAV (GPS) Rwy 21<sup>2</sup>**  
**RNAV (GPS) Rwy 31<sup>2</sup>**  
**VOR Rwy 3<sup>1</sup>**  
**VOR Rwy 13<sup>2</sup>**  
**VOR Rwy 31<sup>2</sup>**

NA when local weather not available.

<sup>1</sup>Categories A, B, 900-2; Category C, 900-2½;

Category D, 900-2¾.

<sup>2</sup>Category C, 800-2¼, Category D, 800-2½.

**DICKINSON, ND**

DICKINSON-THEODORE ROOSEVELT  
RGNL (DIK).....**ILS or LOC Rwy 32<sup>1</sup>**  
**RNAV (GPS) Rwy 14<sup>2</sup>**  
**RNAV (GPS) Rwy 25<sup>2</sup>**  
**RNAV (GPS) Rwy 32<sup>2</sup>**  
**VOR-A<sup>2</sup>**

<sup>1</sup>ILS, Category D, 700-2.

<sup>2</sup>NA when local weather not available.

**DODGE CENTER, MN**

DODGE CENTER (TOB).....**RNAV (GPS) Rwy 16**  
**RNAV (GPS) Rwy 34**  
**VOR-A**

NA when local weather not available.

16 JUL 2020 to 13 AUG 2020

16 JUL 2020 to 13 AUG 2020

20198



NAME ALTERNATE MINIMUMS

**GRANITE FALLS, MN**

GRANITE FALLS MUNI/LENZEN-ROE-FAGEN  
MEMORIAL FIELD (GDB).....**RNAV (GPS) Rwy 33**  
**VOR/DME Rwy 33**

NA when local weather not available.

**GWINNER, ND**

GWINNER-ROGER MELROE  
FIELD (GWR).....**RNAV (GPS) Rwy 16**  
**RNAV (GPS) Rwy 34**

NA when local weather not available.  
Category D, 800-2½.

**HALLOCK, MN**

HALLOCK MUNI (HCO).....**RNAV (GPS) Rwy 13**  
**RNAV (GPS) Rwy 31**

NA when local weather not available.

**HAZEN, ND**

MERCER COUNTY  
RGNL (HZE).....**RNAV (GPS) Rwy 14**  
**RNAV (GPS) Rwy 32**

NA when local weather not available.

**HETTINGER, ND**

HETTINGER  
MUNI (HEI).....**RNAV (GPS) Rwy 12**  
**RNAV (GPS) Rwy 30**

Category D, 800-2¼.

**HIBBING, MN**

RANGE  
RGNL (HIB)..... **ILS OR LOC/DME Rwy 13**  
ILS, Categories A, B, C, D, 800-2.

**HURON, SD**

HURON RGNL (HON).....**ILS or LOC Rwy 12<sup>1</sup>**  
**LOC/DME BC Rwy 30<sup>2</sup>**  
**RNAV (GPS) Rwy 12<sup>2</sup>**  
**RNAV (GPS) Rwy 30<sup>2</sup>**  
**VOR Rwy 12<sup>2</sup>**

NA when local weather not available.  
<sup>1</sup>ILS, Category D, 700-2¼. LOC, Category D,  
800-2¼.

<sup>2</sup>Category D, 800-2¼.

**HUTCHINSON, MN**

HUTCHINSON MUNI-  
BUTLER FIELD (HCD).....**RNAV (GPS) Rwy 15**  
NA when local weather not available.

NAME ALTERNATE MINIMUMS

**INTERNATIONAL FALLS, MN**

FALLS INTL-EINARSON  
FIELD (INL).....**COPTER ILS or LOC Rwy 31<sup>1</sup>**  
**ILS or LOC/DME Rwy 13,700-2<sup>2</sup>**  
**RNAV (GPS) Rwy 13<sup>2</sup>**  
**RNAV (GPS) Rwy 31<sup>2</sup>**  
**VOR Rwy 13<sup>23</sup>**

<sup>1</sup>LOC, NA; ILS, NA when local weather not  
available.

<sup>2</sup>NA when local weather not available.

<sup>3</sup>Category D, 800-2¼.

**JAMESTOWN, ND**

JAMESTOWN  
RGNL (JMS).....**RNAV (GPS) Rwy 4**  
**RNAV (GPS) Rwy 13**  
**RNAV (GPS) Rwy 22**  
**RNAV (GPS) Rwy 31**  
**VOR Rwy 13**  
**VOR Rwy 31**

Category D, 800 2½.

**LANGDON, ND**

ROBERTSON  
FIELD (D55).....**RNAV (GPS) Rwy 14**  
**RNAV (GPS) Rwy 32**

NA when local weather not available.

**LONG PRAIRIE, MN**

TODD  
FIELD (14Y).....**RNAV (GPS) Rwy 34**  
NA when local weather not available.

**LONGVILLE, MN**

LONGVILLE  
MUNI (XVG).....**RNAV (GPS) Rwy 13**  
**RNAV (GPS) Rwy 31**

NA when local weather not available.

**LITCHFIELD, MN**

LITCHFIELD  
MUNI (LJF).....**RNAV (GPS) Rwy 13**  
**RNAV (GPS) Rwy 31**  
**VOR-A**

Category D, 800-2¼.

NA when local weather not available.

**LITTLE FALLS, MN**

LITTLE FALLS/MORRISON COUNTY-  
LINDBERGH  
FIELD (LXL).....**RNAV (GPS) Rwy 31**  
NA when local weather not available.

**LINTON, ND**

LINTON MUNI (7L2).....**RNAV (GPS) Rwy 9**  
**RNAV (GPS) Rwy 27**  
NA when local weather not available.

16 JUL 2020 to 13 AUG 2020

16 JUL 2020 to 13 AUG 2020

20198

NAME ALTERNATE MINIMUMS

**MADISON, MN**

LAC QUI PARLE  
COUNTY (DXX).....RNAV (GPS) Rwy 14  
RNAV (GPS) Rwy 32

NA when local weather not available

**MADISON, SD**

MADISON MUNI (MDS).....RNAV (GPS) Rwy 15  
RNAV (GPS) Rwy 33

NA when local weather not available

**MAHNOMEN, MN**

MAHNOMEN  
COUNTY (3N8).....RNAV (GPS) Rwy 17  
RNAV (GPS) Rwy 35

NA when local weather not available

**MANDAN, ND**

MANDAN MUNI (Y19).....RNAV (GPS) Rwy 13  
RNAV (GPS) Rwy 21  
VOR-A

NA when local weather not available

**MANKATO, MN**

MANKATO RGNL  
(MKT).....COPTER ILS or LOC Rwy 33  
ILS or LOC Rwy 33  
RNAV (GPS) Rwy 15  
RNAV (GPS) Rwy 22  
RNAV (GPS) Rwy 33  
VOR Rwy 15

NA when local weather not available.

**MAPLE LAKE, MN**

MAPLE LAKE MUNI-BILL MAVENCAMP  
SR FIELD (MGG).....VOR-A

NA when local weather not available.

**MARSHALL, MN**

SOUTHWEST MINNESOTA RGNL MARSHALL/  
RYAN FIELD (MML).....RNAV (GPS) Rwy 12  
RNAV (GPS) Rwy 30

NA when local weather not available.

**MINNEAPOLIS, MN**

AIRLAKE (LVN).....RNAV (GPS) Rwy 12<sup>1</sup>  
RNAV (GPS) Rwy 30<sup>2</sup>  
VOR Rwy 12<sup>1</sup>

<sup>1</sup>Category D, 800-2½.

<sup>2</sup>NA when local weather not available.

CRYSTAL (MIC).....RNAV (GPS) Rwy 14L

NA when local weather not available.

NAME ALTERNATE MINIMUMS

**MINNEAPOLIS, MN (CON'T)**

FLYING CLOUD  
(FCM).....COPTER ILS or LOC Rwy 10R<sup>1</sup>  
ILS or LOC Rwy 10R<sup>12</sup>  
RNAV (GPS) Rwy 10L  
RNAV (GPS) Rwy 10R  
RNAV (GPS) Rwy 28L  
RNAV (GPS) Rwy 28R  
RNAV (GPS) Rwy 36  
VOR Rwy 10R  
VOR/DME Rwy 36

NA when local weather not available.

<sup>1</sup>NA when control tower closed.

<sup>2</sup>Category D, 700-2.

MINNEAPOLIS-ST. PAUL INTL/WOLD-  
CHAMBERLAIN (MSP).....ILS or LOC Rwy 12L<sup>1</sup>  
ILS or LOC Rwy 12R<sup>1</sup>  
ILS or LOC Rwy 30L<sup>2</sup>  
ILS or LOC Rwy 30R<sup>2</sup>  
ILS Z or LOC Rwy 35<sup>2</sup>  
LOC Rwy 4<sup>4</sup>  
LOC Rwy 17<sup>3</sup>  
LOC Rwy 22<sup>4</sup>  
LOC Rwy 24<sup>4</sup>  
RNAV (GPS) Rwy 4<sup>4</sup>  
RNAV (GPS) Rwy 22<sup>4</sup>  
RNAV (GPS) Z Rwy 12L<sup>4</sup>  
RNAV (GPS) Z Rwy 12R<sup>4</sup>  
RNAV (GPS) Z Rwy 30L<sup>4</sup>  
RNAV (GPS) Z Rwy 30R<sup>4</sup>  
RNAV (GPS) Z Rwy 35<sup>4</sup>

<sup>1</sup>ILS, Category C, 700-2; Category D, 900-2¾;  
Category E, 1000-3; LOC, Category D, 900-2¾;  
Category E, 1000-3.

<sup>2</sup>ILS, Category C, 700-2; Category D, 900-2¾;  
Category E, 1000-3; LOC, Category D, 900-2¾;  
Category E, 1000-3.

<sup>3</sup>Category D, 900-2¾.

<sup>4</sup>Category D, 900-2¾; Category E, 1000-3.

**MINOT, ND**

MINOT INTL (MOT).....ILS or LOC Rwy 31<sup>12</sup>  
LOC BC Rwy 13<sup>1</sup>  
RNAV (GPS) Rwy 8  
RNAV (GPS) Rwy 13  
RNAV (GPS) Rwy 26  
RNAV (GPS) Rwy 31  
VOR Rwy 8<sup>3</sup>  
VOR Rwy 13  
VOR Rwy 26<sup>4</sup>  
VOR Rwy 31

NA when local weather not available.

<sup>1</sup>NA when tower closed.

<sup>2</sup>Category E, 1100-3.

<sup>3</sup>Categories A, B, 1100-2; Categories C, D, 1100-3.

<sup>4</sup>Categories A, B, 900-2; Category C, 900-2¾;  
Category D, 900-2¾.

16 JUL 2020 to 13 AUG 2020

16 JUL 2020 to 13 AUG 2020

20198



20198

NAME ALTERNATE MINIMUMS

**MITCHELL, SD**

MITCHELL MUNI (MHE).....RNAV (GPS) Rwy 13  
RNAV (GPS) Rwy 18  
RNAV (GPS) Rwy 31  
RNAV (GPS) Rwy 36  
VOR Rwy 13

NA when local weather not available.

**MOBRIDGE, SD**

MOBRIDGE MUNI (MBG).....RNAV (GPS) Rwy 12  
RNAV (GPS) Rwy 30

NA when local weather not available  
Category D, 900-2¼.

**MONTEVIDEO, MN**

MONTEVIDEO-CHIPPEWA  
COUNTY (MVE).....RNAV (GPS) Rwy 14  
RNAV (GPS) Rwy 32

NA when local weather not available

**MOORHEAD, MN**

MOORHEAD  
MUNI (JKJ).....RNAV (GPS) Rwy 30<sup>1</sup>  
VOR-A<sup>2</sup>

<sup>1</sup>NA when local weather not available.

<sup>2</sup>Categories A, B, 900-2;

**MORA, MN**

MORA MUNI (JMR).....RNAV (GPS) Rwy 35  
NA when local weather not available.  
Category D, 800-2¼.

**MORRIS, MN**

MORRIS MUNI-CHARLIE SCHMIDT  
FLD (MOX).....RNAV (GPS) Rwy 14  
RNAV (GPS) Rwy 32

NA when local weather not available.

**ORR, MN**

ORR RGNL (ORB).....RNAV (GPS) Rwy 13  
NA when local weather not available.

**ORTONVILLE, MN**

ORTONVILLE MUNI-MARTINSON  
FIELD (VVV).....RNAV (GPS) Rwy 34  
NA when local weather not available.

**OWATONNA, MN**

OWATONNA DEGNER  
RGNL (OWA).....RNAV (GPS) Rwy 12  
RNAV (GPS) Rwy 30<sup>1</sup>

NA when local weather not available.

<sup>1</sup>Category D, 800-2¼.

NAME ALTERNATE MINIMUMS

**PARK RAPIDS, MN**

PARK RAPIDS MUNI-KONSHOK  
FIELD (PKD).....RNAV (GPS) Rwy 13  
RNAV (GPS) Rwy 31

NA when local weather not available.  
Category D, 1100-3.

**PAYNESVILLE, MN**

PAYNESVILLE  
MUNI (PEX).....RNAV (GPS) Rwy 11  
RNAV (GPS) Rwy 29

NA when local weather not available.

**PHILIP, SD**

PHILIP (PHP).....RNAV (GPS) Rwy 12  
RNAV (GPS) Rwy 30  
VOR-A

NA when local weather not available.

**PIERRE, SD**

PIERRE RGNL (PIR).....ILS or LOC Rwy 31<sup>1</sup>  
RNAV (GPS) Rwy 31<sup>2</sup>

NA when local weather not available.

<sup>1</sup>LOC, Category D, 800-2¼.

<sup>2</sup>Category D, 800-2¼.

**PINE RIDGE, SD**

PINE RIDGE (IEN).....RNAV (GPS) Rwy 12<sup>1</sup>  
RNAV (GPS) Rwy 30<sup>2</sup>

<sup>1</sup>Category C, 900-2½.

<sup>2</sup>Categories A, B, 900-2.

**PINE RIVER, MN**

PINE RIVER  
RGNL (PWC).....NDB Rwy 34

NA when local weather not available.

Categories A, B, 900-2; Category C, 900-2¼.

**PIPESTONE, MN**

PIPESTONE  
MUNI (PQN).....RNAV (GPS) Rwy 18  
RNAV (GPS) Rwy 36

NA when local weather not available.

**PRESTON, MN**

FILLMORE  
COUNTY (FKA).....RNAV (GPS) Rwy 11  
RNAV (GPS) Rwy 29

NA when local weather not available.

16 JUL 2020 to 13 AUG 2020

16 JUL 2020 to 13 AUG 2020

20198

M6

NAME ALTERNATE MINIMUMS

**RAPID CITY, SD**

RAPID CITY  
RGNL (RAP).....**ILS or LOC Rwy 32<sup>1</sup>**  
**RNAV (GPS) Rwy 5<sup>2</sup>**  
**RNAV (GPS) Rwy 14<sup>2,3</sup>**  
**RNAV (GPS) Rwy 23<sup>2</sup>**  
**RNAV (GPS) Rwy 32<sup>4</sup>**  
**VOR or TACAN Rwy 14<sup>2,4</sup>**  
**VOR or TACAN Rwy 32<sup>2,4</sup>**

<sup>1</sup>ILS, Categories B, C, 700-2; Category D, 800-2½; Category E, 800-2¼. LOC, Category D, 800-2¼; Category E, 800-2¼.

<sup>2</sup>NA when local weather not available.

<sup>3</sup>Category D, 800-2½; Category E, 800-2¼.

<sup>4</sup>Category D, 800-2¼; Category E, 800-2¼.

**RED WING, MN**

RED WING  
RGNL (RGK).....**RNAV (GPS) Rwy 9<sup>1</sup>**  
**RNAV (GPS) Rwy 27<sup>2</sup>**

NA when local weather not available.

<sup>1</sup>Category C, 800-2¼; Category D, 800-2½.

<sup>2</sup>Category C, 800-2¼.

**REDWOOD FALLS, MN**

REDWOOD FALLS  
MUNI (RWF).....**RNAV (GPS) Rwy 30**  
**VOR-A**

Category D, 800-2¼.

NA when local weather not available.

**ROCHESTER, MN**

ROCHESTER  
INTL (RST).....**ILS or LOC Rwy 13**  
**ILS Z or LOC Z Rwy 31**  
**COPTER ILS Y or LOC Y Rwy 31**

NA when control tower closed.

**ROLLA, ND**

ROLLA MUNI (06D).....**RNAV (GPS) Rwy 32**  
NA when local weather not available.  
Category D, 900-2¼.

**ROSEAU, MN**

ROSEAU MUNI/RUDY BILLBERG  
FIELD (ROX).....**RNAV (GPS) Rwy 16**  
**RNAV (GPS) Rwy 34**  
NA when local weather not available.

**RUGBY, ND**

RUGBY MUNI (RUG).....**RNAV (GPS) Rwy 30**  
NA when local weather not available.

**RUSH CITY, MN**

RUSH CITY  
RGNL (ROS).....**RNAV (GPS) Rwy 34**  
NA when local weather not available.

NAME ALTERNATE MINIMUMS

**ST. CLOUD, MN**

ST. CLOUD  
RGNL (STC).....**ILS or LOC/DME Rwy 13<sup>1,2,3</sup>**  
**RNAV (GPS) Rwy 5<sup>1</sup>**  
**RNAV (GPS) Rwy 13<sup>1</sup>**  
**RNAV (GPS) Rwy 23<sup>1</sup>**  
**RNAV (GPS) Rwy 31<sup>1</sup>**  
**VOR Rwy 31<sup>3</sup>**

<sup>1</sup>NA when local weather not available.

<sup>2</sup>ILS, Categories A, B, C, D, 700-2.

<sup>3</sup>NA when control tower closed.

**ST. JAMES, MN**

ST. JAMES  
MUNI (JYG).....**RNAV (GPS) Rwy 15**  
**RNAV (GPS) Rwy 33**

NA when local weather not available.

**ST. PAUL, MN**

LAKE ELMO (21D).....**NDB Rwy 4<sup>1</sup>**  
**RNAV (GPS) Rwy 32**

NA when local weather not available.

<sup>1</sup>Categories A, B, 900-2; Category C 900-2½.

**ST. PAUL DOWNTOWN HOLMAN**

FIELD (STP).....**ILS or LOC Rwy 14<sup>1,2</sup>**  
**ILS or LOC Rwy 32<sup>1,2</sup>**  
**NDB Rwy 31<sup>3</sup>**  
**RNAV (GPS) Rwy 14<sup>4</sup>**  
**RNAV (GPS) Rwy 32<sup>4</sup>**

<sup>1</sup>NA when control tower closed.

<sup>2</sup>LOC, Categories A, B, 900-2; Category C, 900-2½; Category D, 900-2¼.

<sup>3</sup>Categories A, B, 900-2; Category C, 900-2¼; Category D, 900-3.

<sup>4</sup>Categories A, B, 900-2; Category C, 900-2½; Category D, 900-2¼.

**SAUK CENTRE, MN**

SAUK CENTRE  
MUNI (D39).....**RNAV (GPS) Rwy 14**  
**RNAV (GPS) Rwy 32**

NA when local weather not available.

**SIoux FALLS, SD**

JOE FOSS  
FIELD (FSD).....**ILS or LOC Rwy 3<sup>1,2</sup>**  
**ILS or LOC Rwy 21<sup>1,2</sup>**  
**RADAR-1<sup>3</sup>**  
**RNAV (GPS) Rwy 3<sup>4</sup>**  
**RNAV (GPS) Rwy 15<sup>5</sup>**  
**RNAV (GPS) Rwy 21<sup>4</sup>**  
**VOR or TACAN Rwy 15<sup>6</sup>**  
**VOR/DME or TACAN Rwy 33<sup>5</sup>**

<sup>1</sup>NA when control tower closed.

<sup>2</sup>LOC, Category D, 800-2½.

<sup>3</sup>Category E, 800-2¼.

<sup>4</sup>Category D, 800-2½.

<sup>5</sup>Category C, 800-2¼; Category D, 800-2½.

<sup>6</sup>Category D, 800-2½; Category E, 900-3.

16 JUL 2020 to 13 AUG 2020

16 JUL 2020 to 13 AUG 2020

NAME ALTERNATE MINIMUMS

**SLAYTON, MN**

SLAYTON MUNI (DVP).....RNAV (GPS) Rwy 17  
RNAV (GPS) Rwy 35

NA when local weather not available.

**SOUTH ST. PAUL, MN**

SOUTH ST. PAUL MUNI-RICHARD E  
FLEMING FIELD (SGS) .....RNAV (GPS) Rwy 34  
Category D, 800-2½.

**SPEARFISH, SD**

BLACK HILLS-  
CLYDE ICE FIELD (SPF).....RNAV (GPS) Rwy 13<sup>1</sup>  
RNAV (GPS) Rwy 31<sup>2</sup>

<sup>1</sup>Categories A, B, 1000-4, Category C, 1700-4.

<sup>2</sup>Categories A, B, 1000-2, Category C, 1700-3.

**STAPLES, MN**

STAPLES MUNI (SAZ).....RNAV (GPS) Rwy 14  
RNAV (GPS) Rwy 32

NA when local weather not available.

**THIEF RIVER FALLS, MN**

THIEF RIVER  
FALLS RGNL (TVF).....ILS or LOC Rwy 31<sup>1</sup>  
RNAV (GPS) Rwy 4<sup>2</sup>  
RNAV (GPS) Rwy 13<sup>23</sup>  
RNAV (GPS) Rwy 22<sup>2</sup>  
RNAV (GPS) Rwy 31<sup>23</sup>  
VOR Y Rwy 13<sup>3</sup>  
VOR Rwy 31<sup>3</sup>

<sup>1</sup>LOC, Category D, 900-2¾.

<sup>2</sup>NA when local weather not available.

<sup>3</sup>Category D, 900-2¾.

**TIOGA, ND**

TIOGA  
MUNI (D60).....RNAV (GPS) Rwy 12  
RNAV (GPS) Rwy 30<sup>1</sup>

Category D, 800-2¼.

<sup>1</sup>NA when local weather not available.

**TWO HARBORS, MN**

RICHARD B.  
HELGESON (TWM).....RNAV (GPS) Rwy 6  
RNAV (GPS) Rwy 24

NA when local weather not available.

**VALLEY CITY, ND**

BARNES COUNTY  
MUNI (BAC).....RNAV (GPS) Rwy 13  
RNAV (GPS) Rwy 31

NA when local weather not available.

**WADENA, MN**

WADENA MUNI (ADC).....RNAV (GPS) Rwy 16  
RNAV (GPS) Rwy 34

NA when local weather not available.

NAME ALTERNATE MINIMUMS

**WAHPETON, ND**

HARRY  
STERN (BWP).....RNAV (GPS) Rwy 33  
NA when local weather not available.

**WALKER, MN**

WALKER MUNI (Y49).....RNAV (GPS) Rwy 15  
RNAV (GPS) Rwy 33  
NA when local weather not available.  
Category C, 800-2¼.

**WARROAD, MN**

WARROAD INTL  
MEMORIAL (RRT).....RNAV (GPS) Rwy 13<sup>1</sup>  
RNAV (GPS) Rwy 31  
Category C, 900-2¾; Category D, 900-3.  
<sup>1</sup>NA when local weather not available.

**WASECA, MN**

WASECA MUNI (ACQ).....RNAV (GPS) Rwy 15  
RNAV (GPS) Rwy 33  
NA when local weather not available.

**WATERTOWN, SD**

WATERTOWN  
RGNL (ATY).....ILS or LOC Rwy 35<sup>12</sup>  
LOC BC Rwy 17<sup>3</sup>  
RNAV (GPS) Rwy 12<sup>3</sup>  
RNAV (GPS) Rwy 17<sup>13</sup>  
RNAV (GPS) Rwy 30<sup>13</sup>  
RNAV (GPS) Rwy 35<sup>3</sup>  
VOR or TACAN Rwy 17<sup>13</sup>

<sup>1</sup>NA when local weather not available.

<sup>2</sup>LOC, Category C, 800-2¼; Category D, 800-2½.

<sup>3</sup>Category C, 800-2¼; Category D, 800-2½.

**WHEATON, MN**

WHEATON MUNI (ETH).....RNAV (GPS) Rwy 16  
RNAV (GPS) Rwy 34  
NA when local weather not available.

**WILLISTON, ND**

WILLISTON BASIN  
INTL (XWA).....RNAV (GPS) Rwy 14  
RNAV (GPS) Rwy 32  
VOR Rwy 14  
VOR Rwy 32

NA when local weather not available.

**WILLMAR, MN**

WILLMAR MUNI-JOHN  
L RICE FIELD (BDH).....RNAV (GPS) Rwy 13  
RNAV (GPS) Rwy 31  
VOR Rwy 31<sup>1</sup>

NA when local weather not available.

<sup>1</sup>Category D, 800-2¼.

16 JUL 2020 to 13 AUG 2020

16 JUL 2020 to 13 AUG 2020

20198

NAME ALTERNATE MINIMUMS

NAME ALTERNATE MINIMUMS

**WINNER, SD**

WINNER RGNL (ICR).....RNAV (GPS) Rwy 13  
RNAV (GPS) Rwy 31

NA when local weather not available.

**WINONA, MN**

WINONA MUNI-MAX CONRAD

FIELD (ONA).....ILS Y or LOC Y Rwy 30<sup>12</sup>  
ILS Z or LOC Z Rwy 30<sup>13</sup>  
RNAV (GPS) Rwy 12<sup>4</sup>  
RNAV (GPS) Rwy 30<sup>1</sup>

<sup>1</sup>NA when local weather not available.

<sup>2</sup>ILS, LOC, Categories A, B, 1000-2; Category C, 1200-3; Category D, 1400-3.

<sup>3</sup>LOC, Category A, B, 1000-2; Category C, 1200-3; Category D, 1400-3.

<sup>4</sup>Categories A, B, 1000-2; Category C, 1200-3; Category D, 1400-3.

**WORTHINGTON, MN**

WORTHINGTON

MUNI (OTG).....RNAV (GPS) Rwy 11<sup>2</sup>  
RNAV (GPS) Rwy 18<sup>2</sup>  
RNAV (GPS) Rwy 29<sup>2</sup>  
RNAV (GPS) Rwy 36<sup>2</sup>  
VOR Rwy 11<sup>1</sup>  
VOR Rwy 18<sup>2</sup>

<sup>1</sup>Category D, 800-2½.

<sup>2</sup>NA when local weather not available.

**YANKTON, SD**

CHAN GURNEY

MUNI (YKN).....RNAV (GPS) Rwy 13  
RNAV (GPS) Rwy 31  
VOR Rwy 13

NA when local weather not available.

16 JUL 2020 to 13 AUG 2020

16 JUL 2020 to 13 AUG 2020

20198

M9