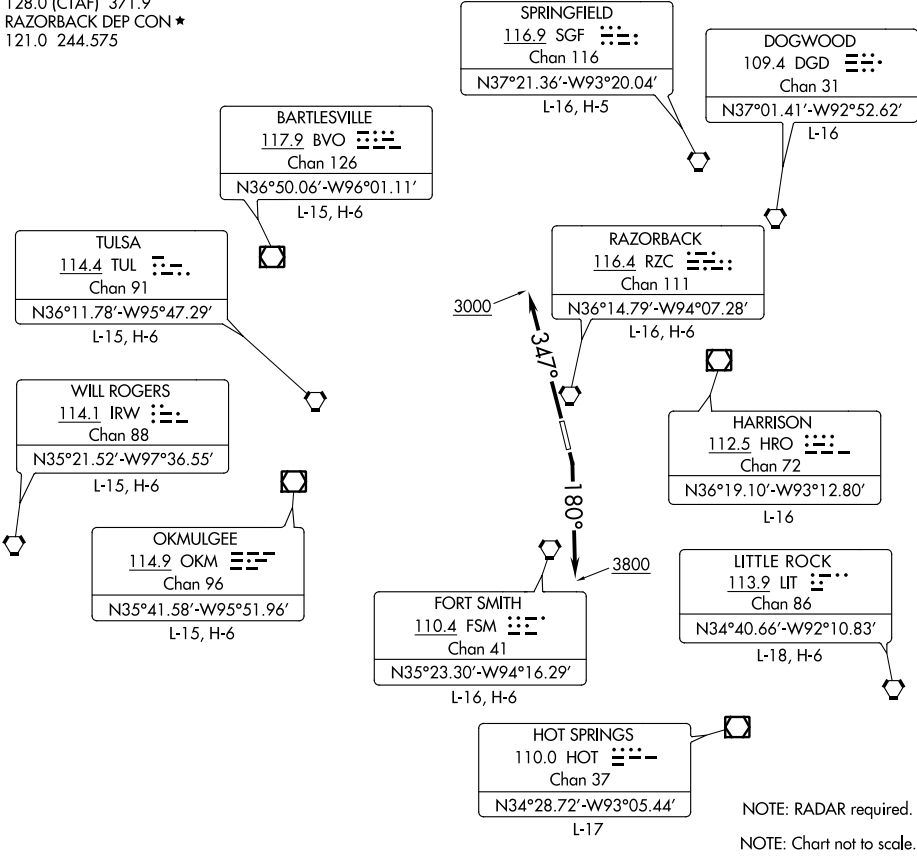


RAZORBACK THREE DEPARTURE

ATIS
119.575
GND CON
121.8
DRAKE TOWER *
128.0 (CTAF) 371.9
RAZORBACK DEP CON *
121.0 244.575

TAKEOFF MINIMUMS
Rwy 16: 400-2 with minimum climb of 310' per NM to 2900
or standard with minimum climb of 530' per NM to 2200.
Rwy 34: 300-1 or standard with minimum climb of 680' per
NM to 1700.

**TOP ALTITUDE:
5000**



NOTE: RADAR required.
NOTE: Chart not to scale.

SC-1, 16 JUN 2022 to 14 JUL 2022

SC-1, 16 JUN 2022 to 14 JUL 2022



DEPARTURE ROUTE DESCRIPTION

TAKEOFF RUNWAY 16: Climbing right turn heading 180° to 3800 thence. . . .
TAKEOFF RUNWAY 34: Climb heading 347° to 3000 thence. . . .

. . . .expect RADAR vectors to filed/assigned route. Climb and maintain 5000 or lower assigned altitude. Expect clearance to filed altitude/flight level ten minutes after departure.

LOST COMMUNICATIONS: If communications are not established within 2 minutes after departure, climb and maintain 5000 feet; leaving 3500 feet proceed direct FSM VORTAC, then proceed on course.

RAZORBACK THREE DEPARTURE