

LOC/DME I-FUL 108.9 Chan 26	APP CRS 243°	Rwy Idg 2868 TDZE 95 Apt Elev 96
---	------------------------	---

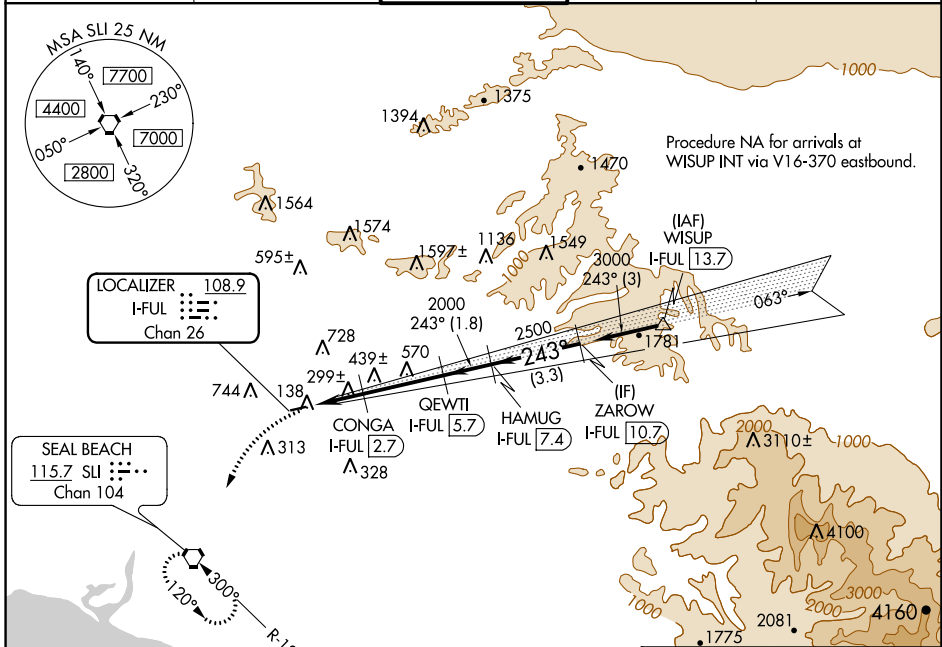
LOC/DME RWY 24

FULLERTON MUNI (F'UL)

⚠ Inoperative table does not apply.
⚠ Night landing: Rwy 6 NA.
 Helicopter visibility reduction below 1 SM NA.

MISSED APPROACH: Climbing left turn to 2600 direct SLI VORTAC and hold.

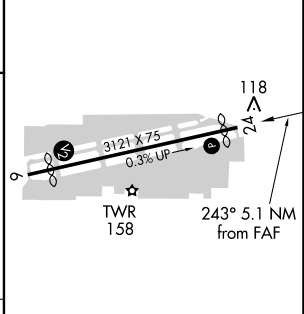
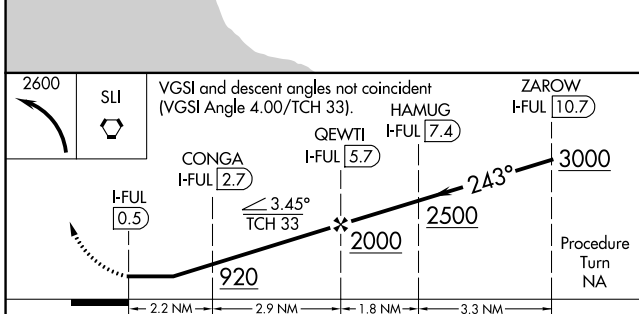
ATIS 125.05	SOCAL APP CON 125.35 316.125	FULLERTON TOWER* 119.1 (CTAF) 0	GND CON 121.8	UNICOM 122.95
-----------------------	--	--	-------------------------	-------------------------



SW-3, 08 OCT 2020 to 05 NOV 2020

SW-3, 08 OCT 2020 to 05 NOV 2020

ELEV 96	TDZE 95
---------	---------



CATEGORY	A	B	C	D
S-24	560-1	465 (500-1)		NA
CIRCLING	760-1 664 (700-1)	840-1¼ 744 (800-1¼)		NA

MIRL Rwy 6-24
 REIL Rws 6 and 24
 RLLS Rwy 24

RNAV (GPS) RWY 24

FULLERTON MUNI (F'UL)

APP CRS	Rwy Idg	2868
243°	TDZE	95
	Apt Elev	96

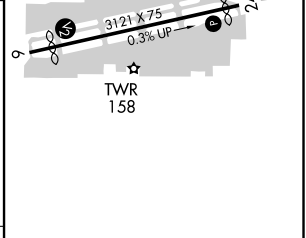
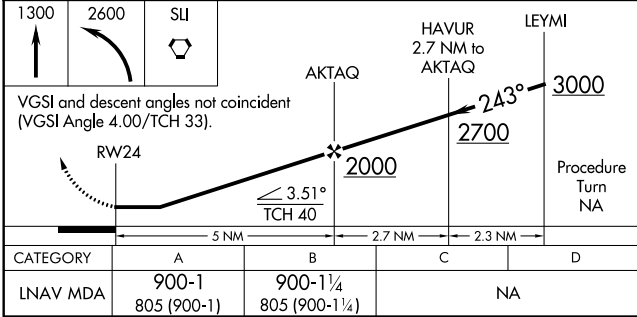
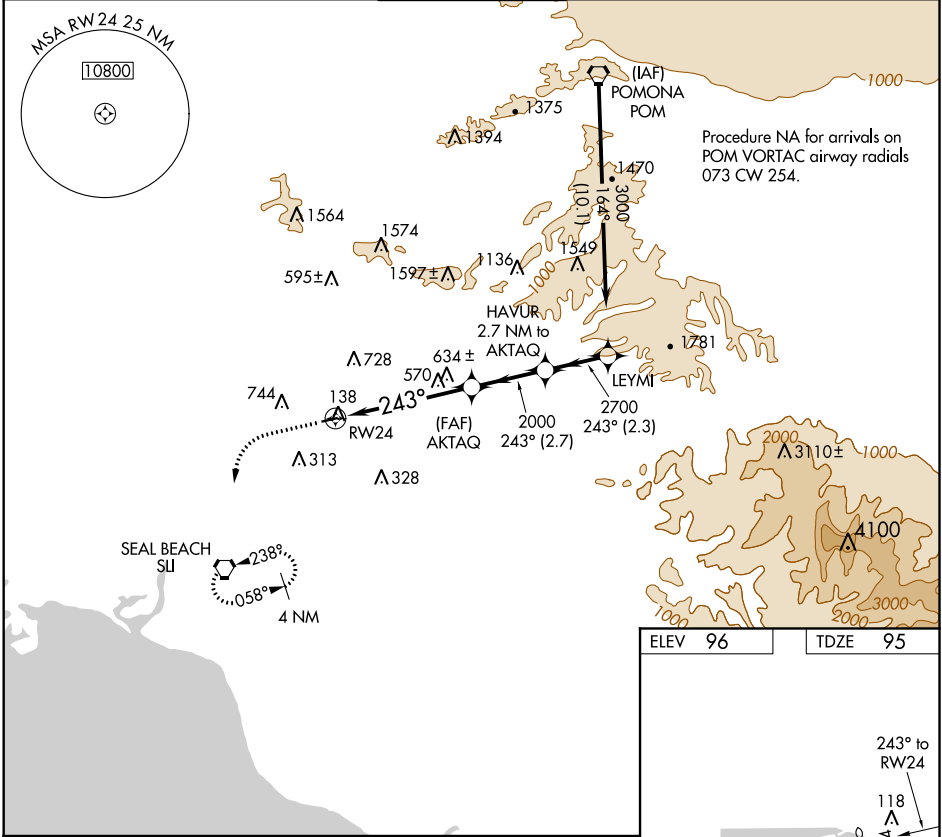
RNP APCH.

▼ Inoperative table does not apply.

▲ NA Helicopter visibility reduction below 1 SM NA.

MISSED APPROACH: Climb to 1300, then climbing left turn to 2600 direct SUI VORTAC and hold.

ATIS 125.05	SOCAL APP CON 125.35 316.125	FULLERTON TOWER ★ 119.1 (CTAF) 0	GND CON 121.8	UNICOM 122.95
-----------------------	--	---	-------------------------	-------------------------



CATEGORY	A	B	C	D
LNAV MDA	900-1 805 (900-1)	900-1¼ 805 (900-1¼)		NA

MIRL Rwy 6-24

REIL Rws 6 and 24

RLLS Rwy 24

SW-3, 08 OCT 2020 to 05 NOV 2020

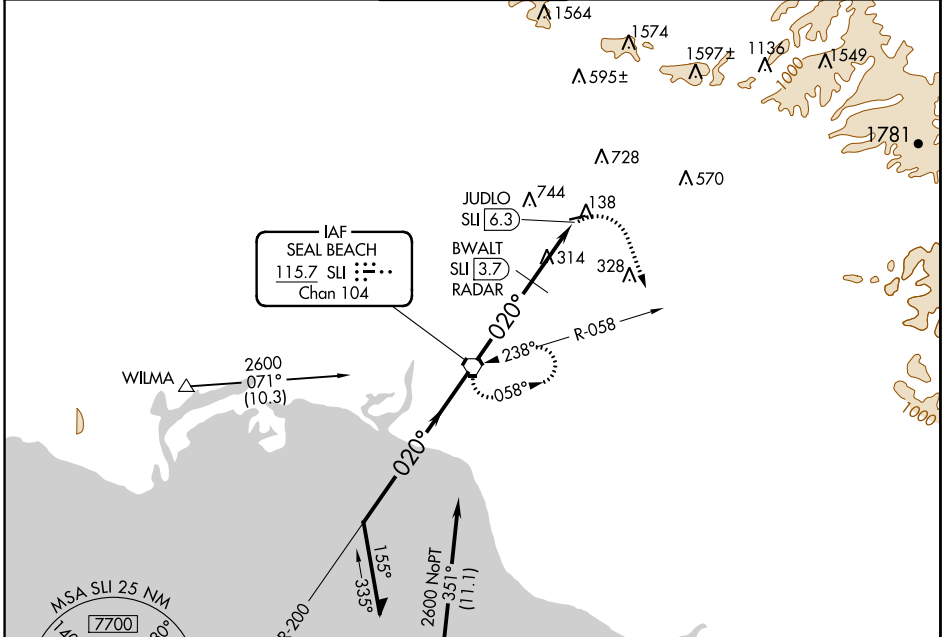
SW-3, 08 OCT 2020 to 05 NOV 2020

VORTAC SLI 115.7 Chan 104	APP CRS 020°	Rwy Idg TDZE Apt Elev	N/A N/A 96
---	------------------------	-----------------------------	---------------------------------------

VOR-A
FULLERTON MUNI (FUL)

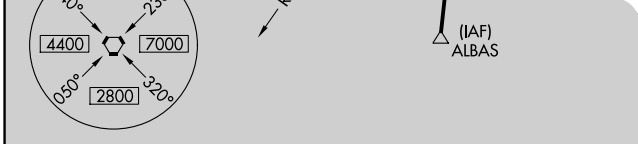
<p>▽ Maximum entry altitude 6000. ▲ Night landing: Rwy 6 NA. Helicopter visibility reduction below 1 SM NA.</p>	<p>MISSED APPROACH: Climbing right turn to 2600 via heading 145° and SLI R-058 to SLI VORTAC and hold.</p>
---	--

ATIS 125.05	SOCAL APP CON 125.35 316.125	FULLERTON TOWER* 119.1 (CTAF) 0	GND CON 121.8	UNICOM 122.95
-----------------------	--	--	-------------------------	-------------------------

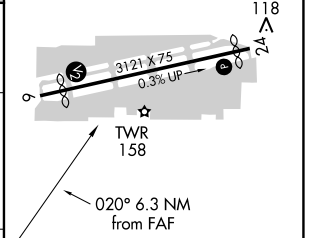
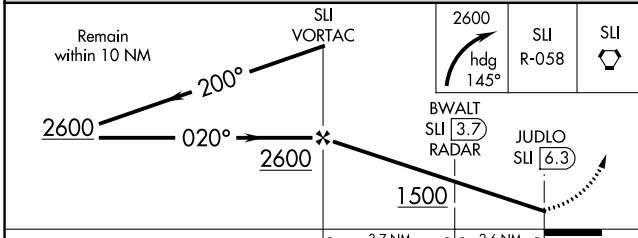


SW-3, 08 OCT 2020 to 05 NOV 2020

SW-3, 08 OCT 2020 to 05 NOV 2020



ELEV 96
MIRL Rwy 6-24 0
REIL Rwys 6 and 24 0
RLS Rwy 24 0



CATEGORY	A	B	C	D
CIRCLING	1500-1¼ 1404 (1500-1¼)	1500-1½ 1404 (1500-1½)	NA	NA
BWALT FIX MINIMUMS				
CIRCLING	760-1 664 (700-1)	840-1¼ 744 (800-1¼)	NA	NA

FAF to MAP 6.3 NM					
Knots	60	90	120	150	180
Min:Sec	6:18	4:12	3:09	2:31	2:06