

DALLAS THREE DEPARTURE  
(DAL3 TTT) 25JAN24

FORT WORTH MEACHAM INTL (F'W)  
FORT WORTH, TEXAS

REGIONAL DEP CON  
118.1 306.95 (NORTH)  
135.975 379.9 (SOUTH)  
ATIS  
120.7  
CLNC DEL  
124.65  
GND CON  
121.9  
MEACHAM TOWER  
118.3 257.8

RADAR and DME required.

NOTE: BELCHER Transition: For aircraft inbound to the JAN, MLU, and SHV terminal areas only.  
NOTE: SOLDO Transition: ATC assigned.

**TOP ALTITUDE:  
ASSIGNED BY ATC**

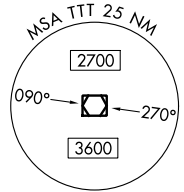
BONHAM  
114.6 BYP  
Chan 93

MAVERICK  
113.1 TTT  
Chan 78

GREGG COUNTY  
112.9 GGG  
Chan 76

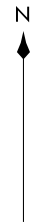
TEXARKANA  
116.3 TXK  
Chan 110

LITTLE ROCK  
113.9 LIT  
Chan 86



**TAKEOFF MINIMUMS**

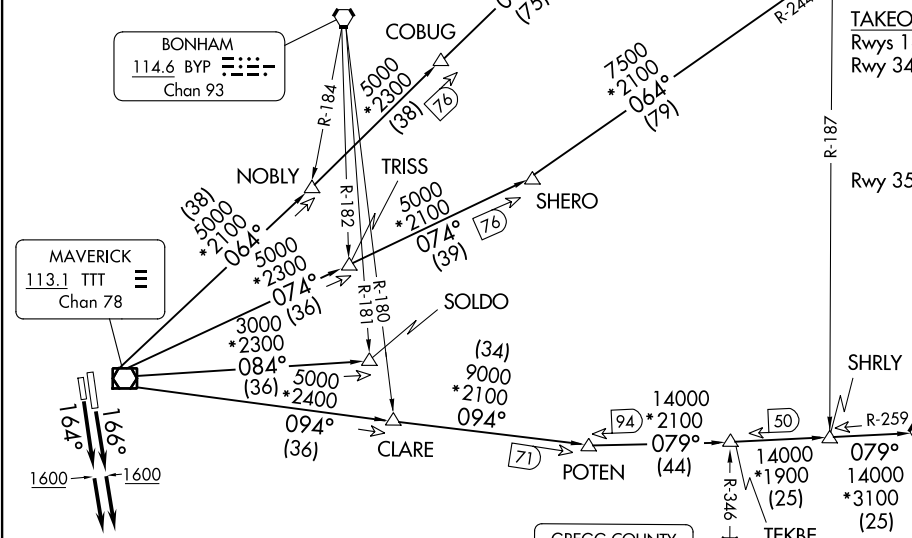
Rwys 16, 17: Standard.  
Rwy 34: 300-1 $\frac{3}{8}$  or standard with minimum climb of 225'/NM to 1100, or alternatively, with standard takeoff minimums and a normal 200'/NM climb gradient, takeoff must occur no later than 2000' prior to DER.  
Rwy 35: 300-1 $\frac{1}{4}$  or standard with minimum climb of 210'/NM to 900, or alternatively, with standard takeoff minimums and a normal 200'/NM climb gradient, takeoff must occur no later than 1300' prior to DER.



DALLAS THREE DEPARTURE  
(DAL3 TTT) 24025

AL-159 (FAA)

FORT WORTH MEACHAM INTL (F'W)  
FORT WORTH, TEXAS



(CONTINUED ON FOLLOWING PAGE)

NOTE: Chart not to scale.

# DALLAS THREE DEPARTURE



## DEPARTURE ROUTE DESCRIPTION

TAKEOFF RUNWAY 16: Climb on heading 166° to 1600 before proceeding on course.

TAKEOFF RUNWAY 17: Climb on heading 164° to 1600 before proceeding on course.

When entering controlled airspace, fly assigned heading for RADAR vectors to appropriate route. Maintain ATC assigned altitude.

BELCHER TRANSITION (DALL3.EIC): From over TTT VOR/DME on TTT R-094 to POTEN, then on EIC R-259 to EIC VORTAC.

LITTLE ROCK TRANSITION (DALL3.LIT): From over TTT VOR/DME on TTT R-064 to ORTRO, then on LIT R-235 to LIT VORTAC.

SOLDO TRANSITION (DALL3.SOLDO): From over TTT VOR/DME on TTT R-084 to SOLDO.

TEXARKANA TRANSITION (DALL3.TXK): From over TTT VOR/DME on TTT R-074 to SHERO, then on TXK R-244 to TXK VORTAC.

SC-2, 22 FEB 2024 to 21 MAR 2024

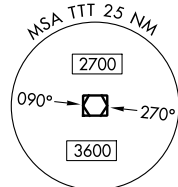
SC-2, 22 FEB 2024 to 21 MAR 2024

RADAR and DME required.

**TOP ALTITUDE:  
ASSIGNED BY ATC**

NOTE: SOLDO Transition: ATC assigned.

REGIONAL DEP CON  
118.1 306.95 (North)  
135.975 379.9 (South)  
ATIS  
120.7  
CLINC DEL  
124.65  
GND CON  
121.9  
MEACHAM TOWER  
118.3 257.8

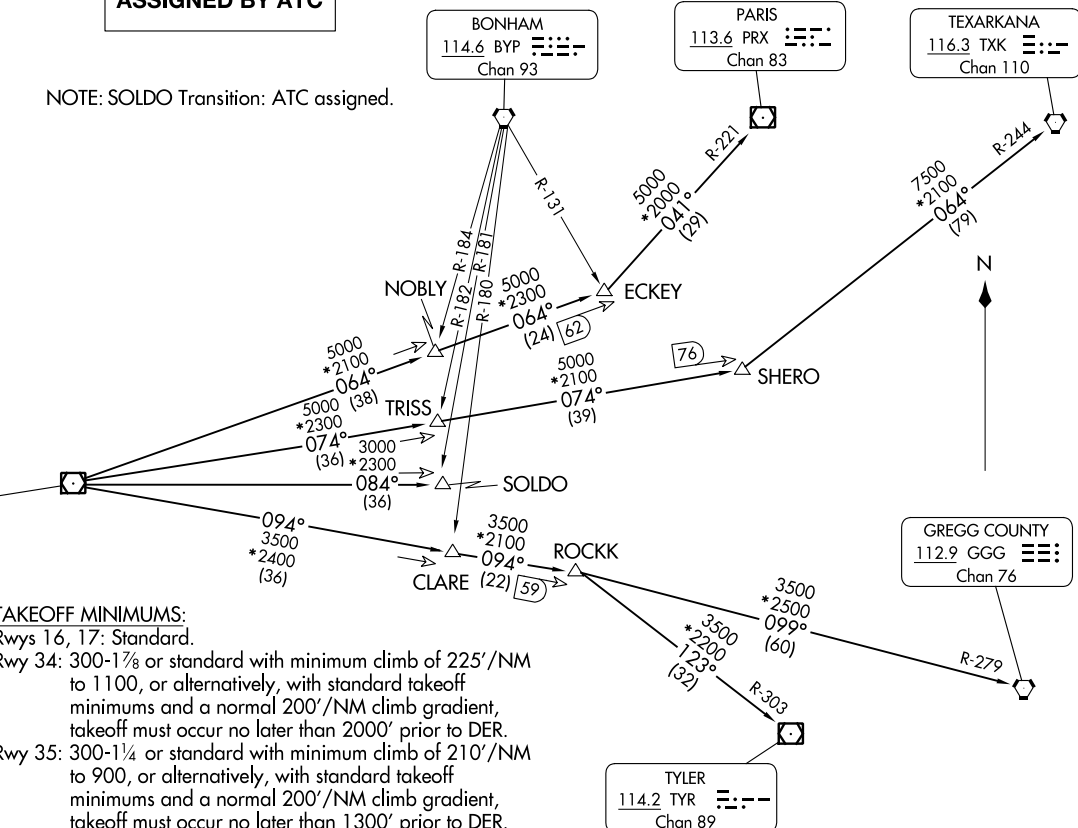


MAVERICK  
113.1 TTT  
Chan 78



**TAKEOFF MINIMUMS:**  
Rwys 16, 17: Standard.  
Rwy 34: 300-1 $\frac{1}{8}$  or standard with minimum climb of 225'/NM to 1100, or alternatively, with standard takeoff minimums and a normal 200'/NM climb gradient, takeoff must occur no later than 2000' prior to DER.  
Rwy 35: 300-1 $\frac{1}{4}$  or standard with minimum climb of 210'/NM to 900, or alternatively, with standard takeoff minimums and a normal 200'/NM climb gradient, takeoff must occur no later than 1300' prior to DER.

NOTE: Chart not to scale.



(CONTINUED ON FOLLOWING PAGE)

GARLAND FIVE DEPARTURE  
(GARL5.TT) 25JAN24

FORT WORTH MEACHAM INTL (FTW)  
FORT WORTH, TEXAS

(GARL5.TT) 24025  
GARLAND FIVE DEPARTURE

AL-159 (FAA)  
FORT WORTH MEACHAM INTL (FTW)  
FORT WORTH, TEXAS

# GARLAND FIVE DEPARTURE



## DEPARTURE ROUTE DESCRIPTION

TAKEOFF RUNWAY 16: Climb on heading 166° to 1600 before proceeding on course.

TAKEOFF RUNWAY 17: Climb on heading 164° to 1600 before proceeding on course.

When entering controlled airspace, fly assigned heading for RADAR vectors to appropriate route. Maintain ATC assigned altitude.

GREGG COUNTY TRANSITION (GARL5.GGG): From over TTT VOR/DME on TTT R-094 to ROCKK, then on GGG R-279 to GGG VORTAC.

PARIS TRANSITION (GARL5.PRX): From over TTT VOR/DME on TTT R-064 to ECKEY, then on PRX R-221 to PRX VOR/DME.

SOLDO TRANSITION (GARL5.SOLDO): From over TTT VOR/DME on TTT R-084 to SOLDO.

TEXARKANA TRANSITION (GARL5.TXK): From over TTT VOR/DME on TTT R-074 to SHERO, then on TXK R-244 to TXK VORTAC.

TYLER TRANSITION (GARL5.TYR): From over TTT VOR/DME on TTT R-094 to ROCKK, then on TYR R-303 to TYR VOR/DME.

SC-2, 22 FEB 2024 to 21 MAR 2024

SC-2, 22 FEB 2024 to 21 MAR 2024



# JOE POOL SEVEN DEPARTURE



## DEPARTURE ROUTE DESCRIPTION

TAKEOFF RUNWAY 16: Climb on heading 166° to 1600 before proceeding on course.

TAKEOFF RUNWAY 17: Climb on heading 164° to 1600 before proceeding on course.

When entering controlled airspace, fly assigned heading for RADAR vectors to appropriate route. Maintain ATC assigned altitude.

COLLEGE STATION TRANSITION (JPOOL7.CLL): From over TTT VOR/DME on TTT R-166 to ELLVR, then on CLL R-334 to CLL VORTAC.

ELLVR TRANSITION (JPOOL7.ELLVR): From over TTT VOR/DME on TTT R-166 to ELLVR.

HOARY TRANSITION (JPOOL7.HOARY): From over TTT VOR/DME on TTT R-186 to NELYN, then on ACT R-357 to ACT VORTAC, then on ACT R-193 to HOARY.

NAVASOTA TRANSITION (JPOOL7.TNV): From over TTT VOR/DME on TTT R-156 to TORNN, then on TNV R-334 to TNV VOR/DME.

SAN ANTONIO TRANSITION (JPOOL7.SAT): From over TTT VOR/DME on TTT R-186 to NELYN, then on ACT R-357 to ACT VORTAC, then on ACT R-193 to HOARY, then on SAT R-024 to SAT VORTAC.

TORNN TRANSITION (JPOOL7.TORNN): From over TTT VOR/DME on TTT R-156 to TORNN.

WACO TRANSITION (JPOOL7.ACT): From over TTT VOR/DME on TTT R-186 to NELYN, then on ACT R-357 to ACT VORTAC.

WINDU TRANSITION (JPOOL7.WINDU): From over TTT VOR/DME on TTT R-176 to WINDU.

NOTE: COLLEGE STATION Transition: For piston and turboprop aircraft destined to HOU, EFD, GLS, or LBX. Also for all other aircraft types destined to all other Houston terminal area airports except IAH, CXO, DWH, T78 or 6R3.

NOTE: ELLVR Transition: For turbojet aircraft destined to HOU, EFD, GLS, or LBX.

NOTE: SAN ANTONIO Transition: For aircraft overflying Centex and San Antonio.

NOTE: TORNN Transition: Only for aircraft destined IAH, CXO, DWH, T78 or 6R3.

NOTE: WACO Transition: For aircraft inbound to Waco or Gray terminal area airports.

NOTE: WINDU Transition: For aircraft inbound to Austin or San Antonio terminal area.

SC-2, 22 FEB 2024 to 21 MAR 2024

SC-2, 22 FEB 2024 to 21 MAR 2024

RADAR and DME required.

**TOP ALTITUDE:  
ASSIGNED BY ATC**

REGIONAL DEP CON  
118.1 306.95 (NORTH)  
135.975 379.9 (SOUTH)  
ATIS  
120.7  
CLNC DEL  
124.65  
GND CON  
121.9  
MEACHAM TOWER  
118.3 257.8

**TAKEOFF MINIMUMS**

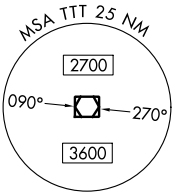
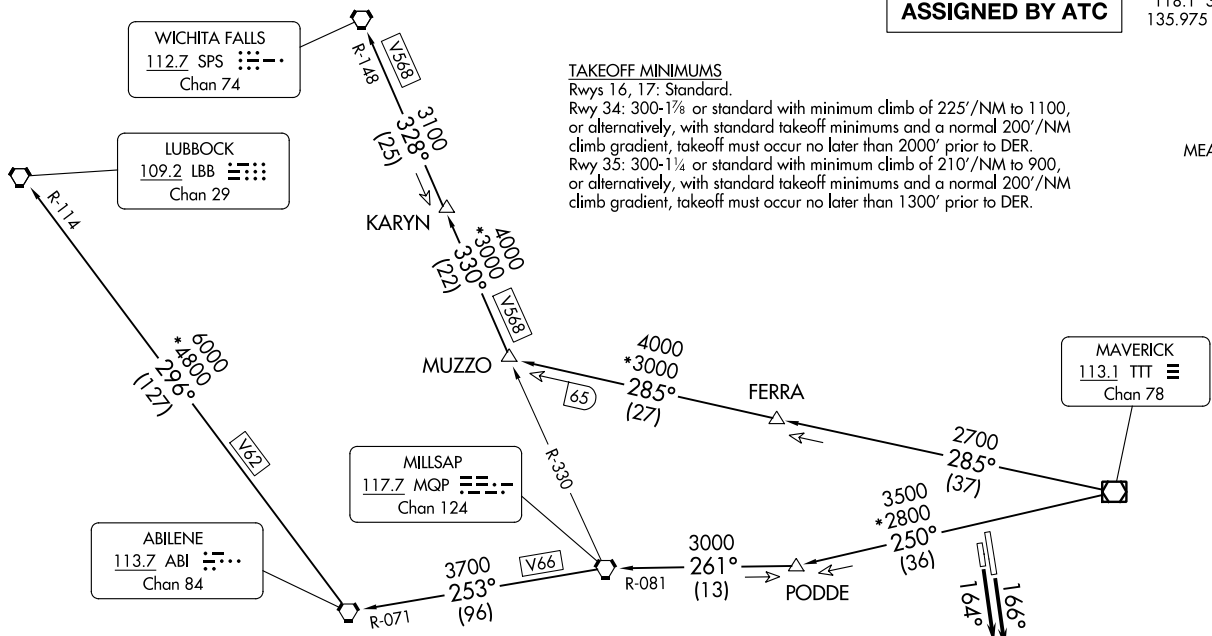
Rwys 16, 17: Standard.  
Rwy 34: 300-1 $\frac{1}{4}$  or standard with minimum climb of 225'/NM to 1100, or alternatively, with standard takeoff minimums and a normal 200'/NM climb gradient, takeoff must occur no later than 2000' prior to DER.  
Rwy 35: 300-1 $\frac{1}{4}$  or standard with minimum climb of 210'/NM to 900, or alternatively, with standard takeoff minimums and a normal 200'/NM climb gradient, takeoff must occur no later than 1300' prior to DER.

KINGDOM FOUR DEPARTURE  
(KING4.TTT) 25JAN24

(KING4.TTT) 24053  
KINGDOM FOUR DEPARTURE

AL-159 (FAA)

FORT WORTH MEACHAM INTL (F'W'W)  
FORT WORTH, TEXAS



- NOTE: LUBBOCK Transition: For all aircraft overflying the MQP VORTAC westbound or direct.
- NOTE: MILLSAP Transition: For all aircraft overflying the MQP VORTAC westbound or direct.
- NOTE: PODDE Transition: ATC assigned.
- NOTE: WICHITA FALLS Transition: For all aircraft landing within the Wichita Falls terminal area or overflying the SPS VORTAC.
- NOTE: For all aircraft requesting 17000 and below.

NOTE: Chart not to scale.

(CONTINUED ON FOLLOWING PAGE)

FORT WORTH, TEXAS  
FORT WORTH MEACHAM INTL (F'W'W)

# KINGDOM FOUR DEPARTURE



## DEPARTURE ROUTE DESCRIPTION

TAKEOFF RUNWAY 16: Climb on heading 166° to 1600 before proceeding on course.

TAKEOFF RUNWAY 17: Climb on heading 164° to 1600 before proceeding on course.

When entering controlled airspace, fly assigned heading for RADAR vectors to appropriate route. Maintain ATC assigned altitude.

LUBBOCK TRANSITION (KING4.LBB): From over TTT VOR/DME on TTT R-250 to PODDE, then on MQP R-081 to MQP VORTAC, then on MQP R-253 and ABI R-071 to ABI VORTAC, then on ABI R-296 and LBB R-114 to LBB VORTAC.

MILLSAP TRANSITION (KING4.MQP): From over TTT VOR/DME on TTT R-250 to PODDE, then on MQP R-081 to MQP VORTAC.

PODDE TRANSITION (KING4.PODDE): From over TTT VOR/DME on TTT R-250 to PODDE.

WICHITA FALLS TRANSITION (KING4.SPS): From over TTT VOR/DME on TTT R-285 to MUZZO, then on MQP R-330 and SPS R-148 to KARYN, then on SPS R-148 to SPS VORTAC.

SC-2, 22 FEB 2024 to 21 MAR 2024

SC-2, 22 FEB 2024 to 21 MAR 2024



KUSSO ONE DEPARTURE (RNAV)  
(KUSSO1 .KUSSO) 24MAR22

FORT WORTH, TEXAS  
FORT WORTH MEACHAM INTL (F'TW)

ATIS  
120.7  
CLNC DEL  
124.65  
GND CON  
121.9  
MEACHAM TOWER  
118.3 257.8  
REGIONAL DEP CON  
118.1 306.95 (NORTH)  
135.975 379.9 (SOUTH)

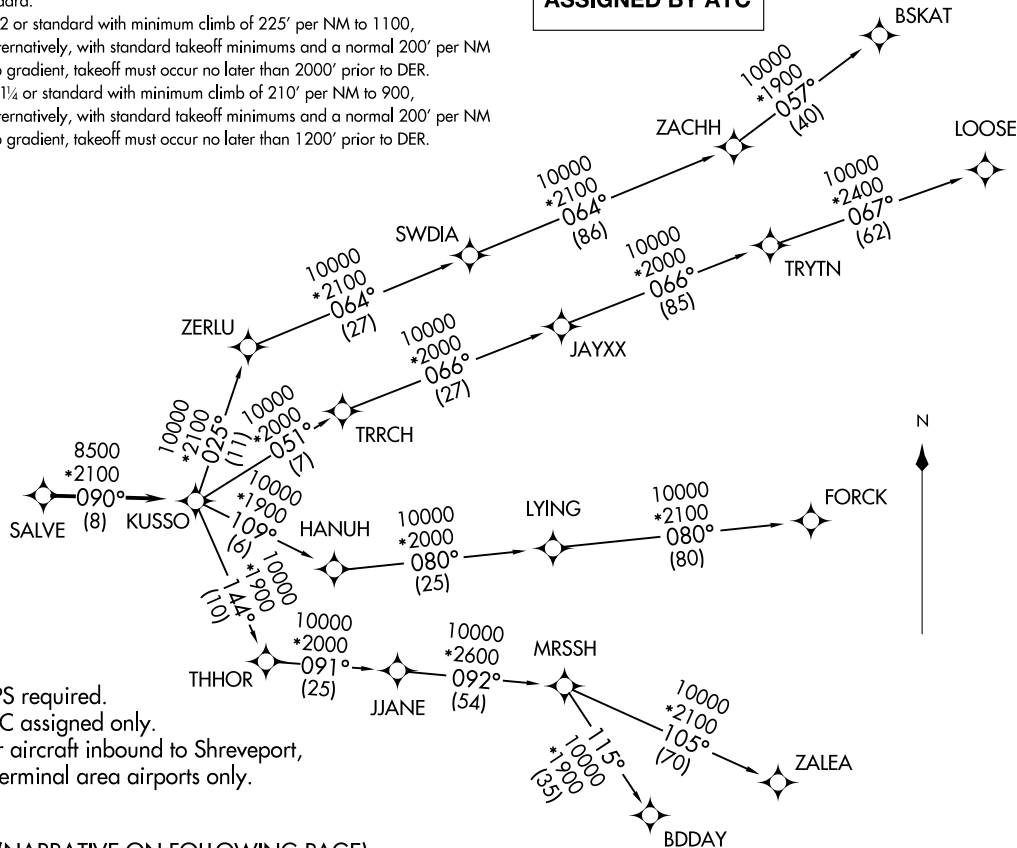
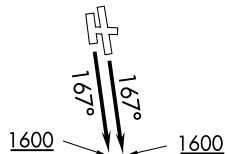
**TAKEOFF MINIMUMS**

Rwys 16, 17: Standard.

Rwy 34: 300-2 or standard with minimum climb of 225' per NM to 1100,  
or alternatively, with standard takeoff minimums and a normal 200' per NM  
climb gradient, takeoff must occur no later than 2000' prior to DER.

Rwy 35: 300-1¼ or standard with minimum climb of 210' per NM to 900,  
or alternatively, with standard takeoff minimums and a normal 200' per NM  
climb gradient, takeoff must occur no later than 1200' prior to DER.

**TOP ALTITUDE:  
ASSIGNED BY ATC**



NOTE: RADAR required.  
NOTE: RNAV 1.  
NOTE: DME/DME/IRU or GPS required.  
NOTE: BDDAY transition: ATC assigned only.  
NOTE: MRSSH transition: For aircraft inbound to Shreveport,  
Jackson and Monroe terminal area airports only.

(NARRATIVE ON FOLLOWING PAGE)

NOTE: Chart not to scale.

(KUSSO1 .KUSSO) 22083  
KUSSO ONE DEPARTURE (RNAV)

AL-159 (FAA)

FORT WORTH MEACHAM INTL (F'TW)  
FORT WORTH, TEXAS

# KUSSO ONE DEPARTURE (RNAV)



## DEPARTURE ROUTE DESCRIPTION

TAKEOFF RUNWAYS 16, 17: Climb on heading 167° to 1600 before proceeding on course.

When entering controlled airspace, fly heading assigned by ATC, expect vector to SALVE, then on track 090° to KUSSO, then on assigned transition. Maintain ATC assigned altitude, expect filed altitude 10 minutes after departure.

- BDDAY TRANSITION (KUSSO1.BDDAY)
- BSKAT TRANSITION (KUSSO1.BSKAT)
- FORCK TRANSITION (KUSSO1.FORCK)
- LOOSE TRANSITION (KUSSO1.LOOSE)
- MRSSH TRANSITION (KUSSO1.MRSSH)
- ZALEA TRANSITION (KUSSO1.ZALEA)

SC-2, 22 FEB 2024 to 21 MAR 2024

SC-2, 22 FEB 2024 to 21 MAR 2024

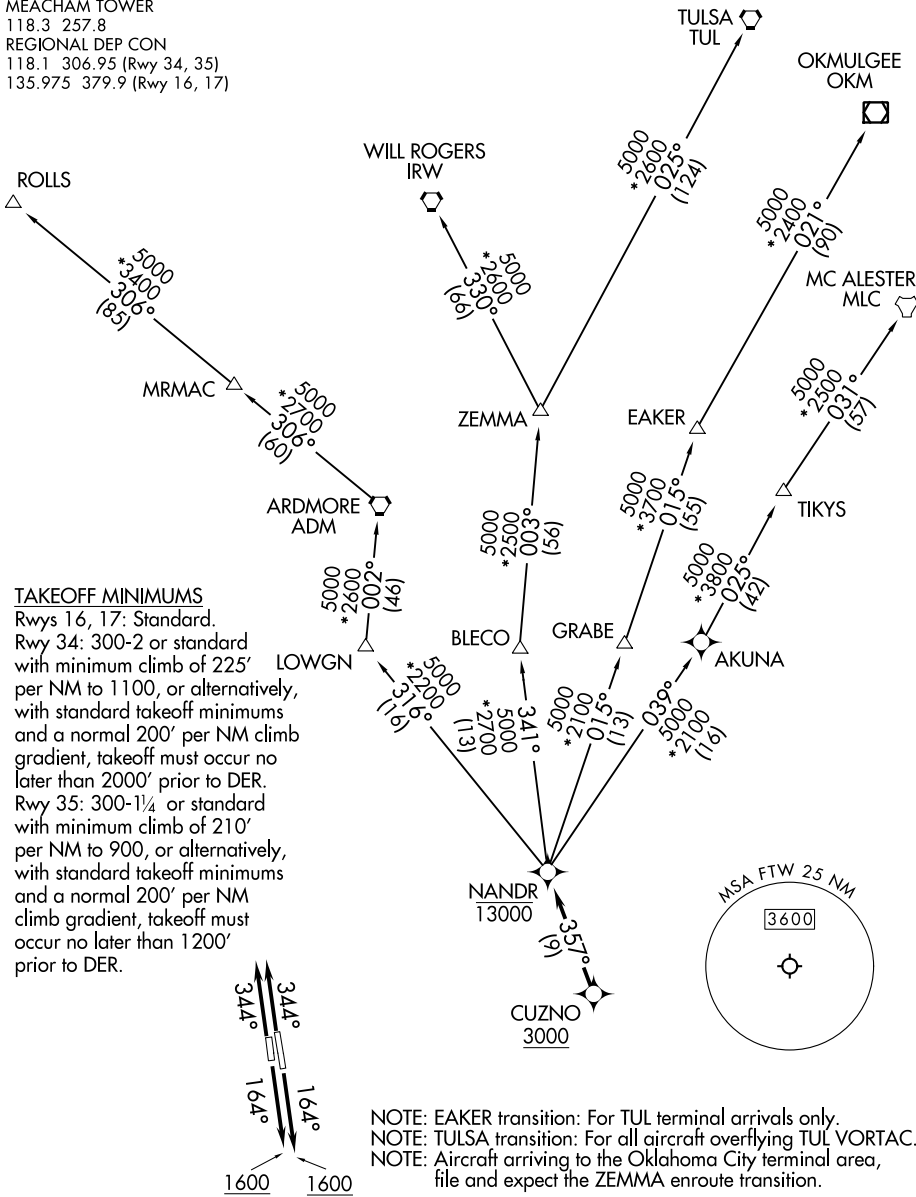
# NANDR TWO DEPARTURE (RNAV)

ATIS 120.7  
 CLNC DEL  
 124.65  
 GND CON 121.9  
 MEACHAM TOWER  
 118.3 257.8  
 REGIONAL DEP CON  
 118.1 306.95 (Rwy 34, 35)  
 135.975 379.9 (Rwy 16, 17)

RNAV 1 - DME/DME/IRU or GPS.

RADAR required.

**TOP ALTITUDE:  
ASSIGNED BY ATC**



SC-2, 22 FEB 2024 to 21 MAR 2024

SC-2, 22 FEB 2024 to 21 MAR 2024

NOTE: EAKER transition: For TUL terminal arrivals only.  
 NOTE: TULSA transition: For all aircraft overflying TUL VORTAC.  
 NOTE: Aircraft arriving to the Oklahoma City terminal area, file and expect the ZEMMA enroute transition.

(NARRATIVE ON FOLLOWING PAGE)

NOTE: Chart not to scale.

# NANDR TWO DEPARTURE (RNAV)

(NANDR2.NANDR) 20APR23

# NANDR TWO DEPARTURE (RNAV)



## DEPARTURE ROUTE DESCRIPTION

TAKEOFF RUNWAYS 16, 17: Climb on heading 164° to 1600 before proceeding on course or as assigned by ATC, thence . . . .

TAKEOFF RUNWAYS 34, 35: Climb on heading 344° or as assigned by ATC, thence . . . .

. . . . expect RADAR vectors to cross CUZNO at or above 3000, then on track 357° to cross NANDR at or below 13000, then on assigned transition.

EAKER TRANSITION (NANDR2.EAKER)

MC ALESTER TRANSITION (NANDR2.MLC)

OKMULGEE TRANSITION (NANDR2.OKM)

ROLLS TRANSITION (NANDR2.ROLLS)

TULSA TRANSITION (NANDR2.TUL)

WILL ROGERS TRANSITION (NANDR2.IRW)

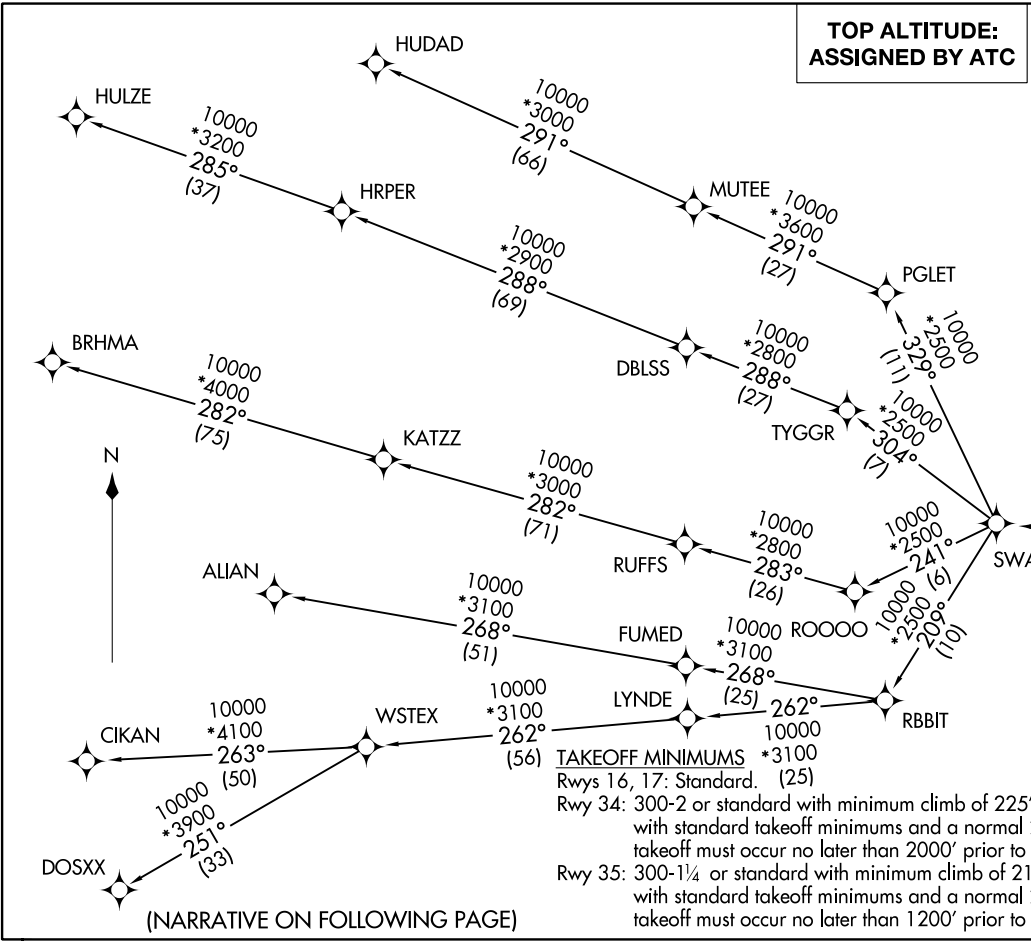
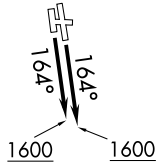
ZEMMA TRANSITION (NANDR2.ZEMMA)

SC-2, 22 FEB 2024 to 21 MAR 2024

SC-2, 22 FEB 2024 to 21 MAR 2024

**TOP ALTITUDE:  
 ASSIGNED BY ATC**

NOTE: RNAV 1.  
 NOTE: DME/DME/IRU or GPS required.  
 NOTE: RADAR required.  
 NOTE: ALIAN Transition: ATC assigned only.



**TAKEOFF MINIMUMS** \*3100  
 Rwy 16, 17: Standard. (25)

Rwy 34: 300-2 or standard with minimum climb of 225' per NM to 1100, or alternatively, with standard takeoff minimums and a normal 200' per NM climb gradient, takeoff must occur no later than 2000' prior to DER.

Rwy 35: 300-1¼ or standard with minimum climb of 210' per NM to 900, or alternatively, with standard takeoff minimums and a normal 200' per NM climb gradient, takeoff must occur no later than 1200' prior to DER.

NOTE: Chart not to scale.

(NARRATIVE ON FOLLOWING PAGE)

# SWABR ONE DEPARTURE (RNAV)



## DEPARTURE ROUTE DESCRIPTION

TAKEOFF RUNWAYS 16, 17: Climb on heading 164° to 1600 before proceeding on course.

When entering controlled airspace, fly heading assigned by ATC, expect vectors to BOTCH, then on track 270° to SWABR, then on assigned transition. Maintain ATC assigned altitude, expect filed altitude 10 minutes after departure.

ALIAN TRANSITION (SWABR1.ALIAN)

BRHMA TRANSITION (SWABR1.BRHMA)

CIKAN TRANSITION (SWABR1.CIKAN)

DOSXX TRANSITION (SWABR1.DOSXX)

HUDAD TRANSITION (SWABR1.HUDAD)

HULZE TRANSITION (SWABR1.HULZE)

WSTEX TRANSITION (SWABR1.WSTEX)

SC-2, 22 FEB 2024 to 21 MAR 2024

SC-2, 22 FEB 2024 to 21 MAR 2024

# TEXOMA FIVE DEPARTURE

REGIONAL DEP CON  
 118.1 306.95 (NORTH)  
 135.975 379.9 (SOUTH)  
 ATIS  
 120.7  
 CLNC DEL  
 124.65  
 GND CON  
 121.9  
 MEACHAM TOWER  
 118.3 257.8

**TOP ALTITUDE:  
 ASSIGNED BY ATC**

TULSA  
 114.4 TUL  
 Chan 91

RADAR and DME required.

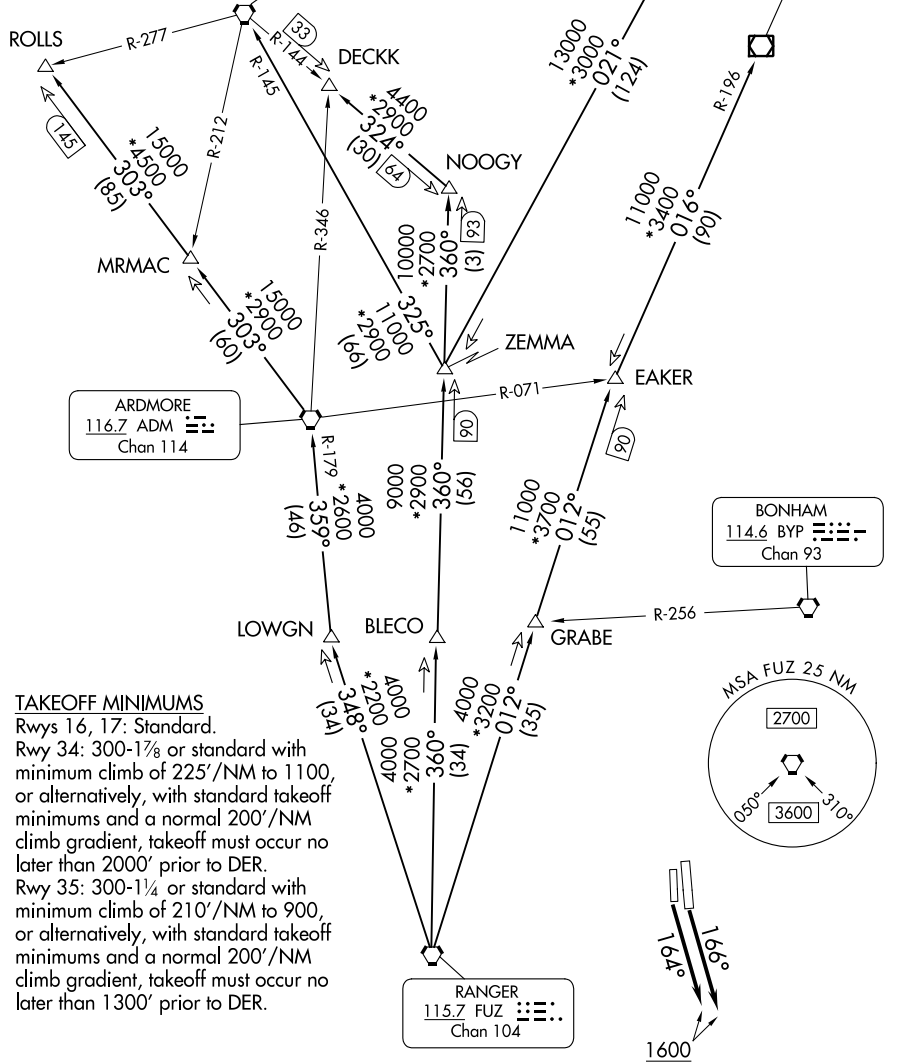
WILL ROGERS  
 114.1 IRW  
 Chan 88

OKMULGEE  
 114.9 OKM  
 Chan 96

ARDMORE  
 116.7 ADM  
 Chan 114

BONHAM  
 114.6 BYP  
 Chan 93

RANGER  
 115.7 FUZ  
 Chan 104



### TAKEOFF MINIMUMS

Rwys 16, 17: Standard.

Rwy 34: 300-1/4 or standard with minimum climb of 225'/NM to 1100, or alternatively, with standard takeoff minimums and a normal 200'/NM climb gradient, takeoff must occur no later than 2000' prior to DER.

Rwy 35: 300-1/4 or standard with minimum climb of 210'/NM to 900, or alternatively, with standard takeoff minimums and a normal 200'/NM climb gradient, takeoff must occur no later than 1300' prior to DER.

(CONTINUED ON FOLLOWING PAGE)

NOTE: Chart not to scale.

# TEXOMA FIVE DEPARTURE

SC-2, 22 FEB 2024 to 21 MAR 2024

SC-2, 22 FEB 2024 to 21 MAR 2024

# TEXOMA FIVE DEPARTURE



## DEPARTURE ROUTE DESCRIPTION

TAKEOFF RUNWAY 16: Climb on heading 166° to 1600 before proceeding on course.

TAKEOFF RUNWAY 17: Climb on heading 164° to 1600 before proceeding on course.

When entering controlled airspace, fly assigned heading for RADAR vectors to appropriate route. Maintain ATC assigned altitude.

ARDMORE TRANSITION (TEX5.ADM): From over FUZ VORTAC on FUZ R-348 to LOWGN, then on ADM R-179 to ADM VORTAC.

BLECO TRANSITION (TEX5.BLECO): From over FUZ VORTAC on FUZ R-360 to BLECO.

DECKK TRANSITION (TEX5.DECKK): From over FUZ VORTAC on FUZ R-360 to NOOGY, then on IRW R-144 to DECKK.

EAKER TRANSITION (TEX5.EAKER): From over FUZ VORTAC on FUZ R-012 to EAKER.

GRABE TRANSITION (TEX5.GRABE): From over FUZ VORTAC on FUZ R-012 to GRABE.

OKMULGEE TRANSITION (TEX5.OKM): From over FUZ VORTAC on FUZ R-012 to EAKER, then on OKM R-196 to OKM VOR/DME.

ROLLS TRANSITION (TEX5.ROLLS): From over FUZ VORTAC on FUZ R-348 to LOWGN, then on ADM R-179 to ADM VORTAC, then on ADM R-303 to ROLLS.

TULSA TRANSITION (TEX5.TUL): From over FUZ VORTAC on FUZ R-360 to ZEMMA, then on TUL R-201 to TUL VORTAC.

WILL ROGERS TRANSITION (TEX5.IRW): From over FUZ VORTAC on FUZ R-360 to ZEMMA, then on IRW R-145 to IRW VORTAC.

ZEMMA TRANSITION (TEX5.ZEMMA): From over FUZ VORTAC on FUZ R-360 to ZEMMA.

NOTE: BLECO Transition: ATC assigned.

NOTE: DECKK Transition: For all aircraft inbound to the Oklahoma City area.

NOTE: EAKER Transition: For aircraft inbound to the Tulsa terminal area.

NOTE: GRABE Transition: ATC assigned.

NOTE: OKMULGEE Transition: For all aircraft overflying OKM VOR/DME proceeding on J181 to BDF to destinations in the Chicago terminal area and north.

NOTE: TULSA Transition: For all aircraft overflying TUL VORTAC.

NOTE: WILL ROGERS Transition: For all aircraft overflying IRW VORTAC.

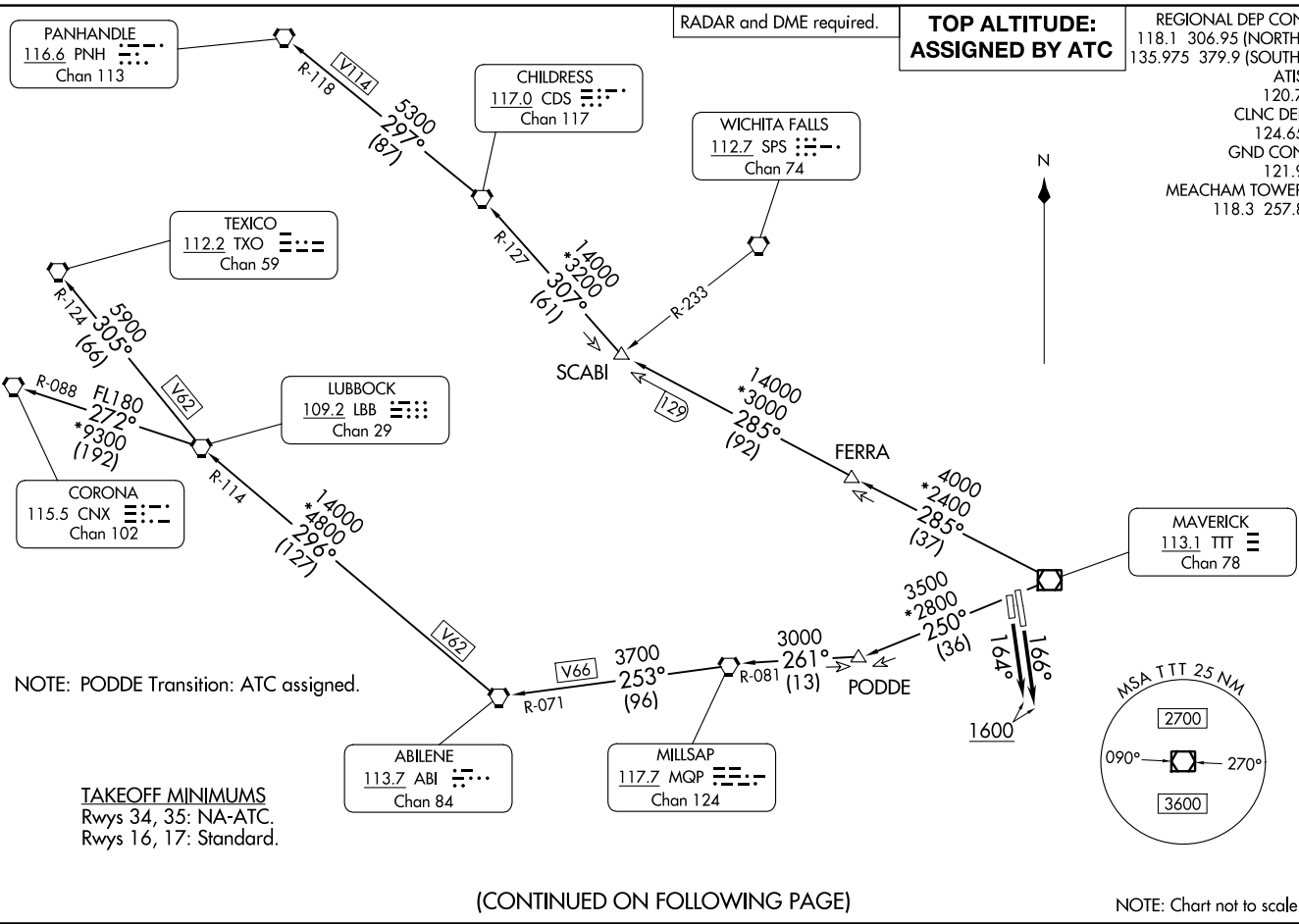
SC-2, 22 FEB 2024 to 21 MAR 2024

SC-2, 22 FEB 2024 to 21 MAR 2024



WORTH ONE DEPARTURE  
(WORTH1.TTT) 25JAN24

FORT WORTH, TEXAS  
FORT WORTH MEACHAM INTL (F'W)



(CONTINUED ON FOLLOWING PAGE)

# WORTH ONE DEPARTURE

FORT WORTH, TEXAS



## DEPARTURE ROUTE DESCRIPTION

TAKEOFF RUNWAY 16: Climb on heading 166° to 1600 before proceeding on course.

TAKEOFF RUNWAY 17: Climb on heading 164° to 1600 before proceeding on course.

When entering controlled airspace, fly assigned heading for RADAR vectors to appropriate route. Maintain ATC assigned altitude.

ABILENE TRANSITION (WORTH1.ABI): From over TTT VOR/DME on TTT R-250 to PODDE, then on MQP R-081 to MQP VORTAC, then on MQP R-253 and ABI R-071 to ABI VORTAC.

CHILDRESS TRANSITION (WORTH1.CDS): From over TTT VOR/DME on TTT R-285 to SCABI, then on CDS R-127 to CDS VORTAC.

CORONA TRANSITION (WORTH1.CNX): From over TTT VOR/DME on TTT R-250 to PODDE, then on MQP R-081 to MQP VORTAC, then on MQP R-253 and ABI R-071 to ABI VORTAC, then on ABI R-296 and LBB R-114 to LBB VORTAC, then on LBB R-272 and CNX R-088 to CNX VORTAC.

LUBBOCK TRANSITION (WORTH1.LBB): From over TTT VOR/DME on TTT R-250 to PODDE, then on MQP R-081 to MQP VORTAC, then on MQP R-253 and ABI R-071 to ABI VORTAC, then on ABI R-296 and LBB R-114 to LBB VORTAC.

PANHANDLE TRANSITION (WORTH1.PNH): From over TTT VOR/DME on TTT R-285 to SCABI, then on CDS R-127 to CDS VORTAC, then on CDS R-297 and PNH R-118 to PNH VORTAC.

PODDE TRANSITION (WORTH1.PODDE): From over TTT VOR/DME on TTT R-250 to PODDE.

TEXICO TRANSITION (WORTH1.TXO): From over TTT VOR/DME on TTT R-250 to PODDE, then on MQP R-081 to MQP VORTAC, then on MQP R-253 and ABI R-071 to ABI VORTAC, then on ABI R-296 and LBB R-114 to LBB VORTAC, then on LBB R-305 and TXO R-124 to TXO VORTAC.

SC-2, 22 FEB 2024 to 21 MAR 2024

SC-2, 22 FEB 2024 to 21 MAR 2024

# WORTH ONE DEPARTURE

(WORTH1.TTT) 25JAN24

FORT WORTH, TEXAS

FORT WORTH MEACHAM INTL (FTW)