

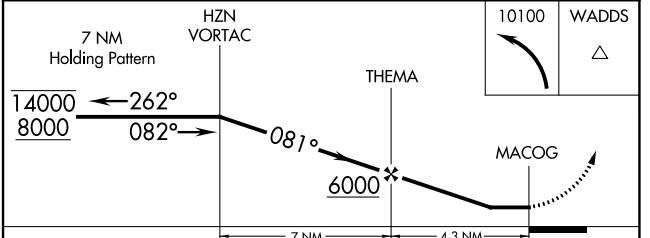
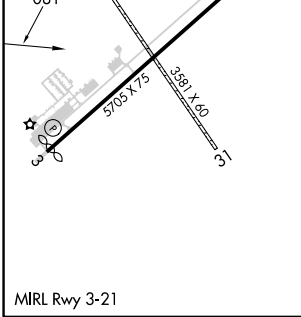
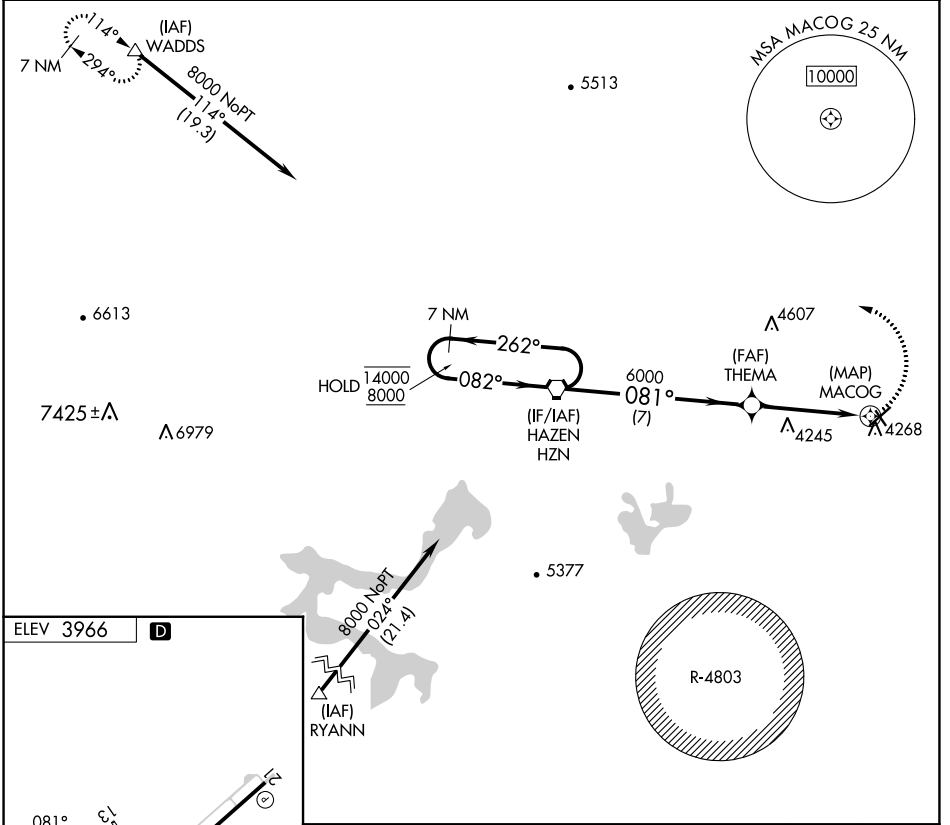
APP CRS 081°	Rwy Idg TDZE Apt Elev	N/A N/A 3966
------------------------	-----------------------------	---

RNAV (GPS)-C

FALLON MUNI (F.LX)

RNP APCH. ▼ Circling NA to Rwys 13 and 31. Circling to Rwy 21 NA at night. When local altimeter not received, use Fallon NAS altimeter setting.		MISSED APPROACH: Climbing left turn to 10100 direct WADDS and hold, continue climb-in-hold 10100.
--	--	---

AWOS-AV 118.25	KNFL ATIS * 370.925	NAVY FALLON APP CON * 120.85 360.2	UNICOM 122.8 (CTAF)
--------------------------	-------------------------------	--	-------------------------------



CATEGORY	A	B	C	D
C CIRCLING	4620-1	654 (700-1)	4620-1 ³ / ₄ 654 (700-1 ³ / ₄)	4620-2 654 (700-2)

SW-4, 22 FEB 2024 to 21 MAR 2024

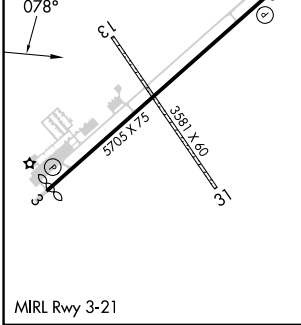
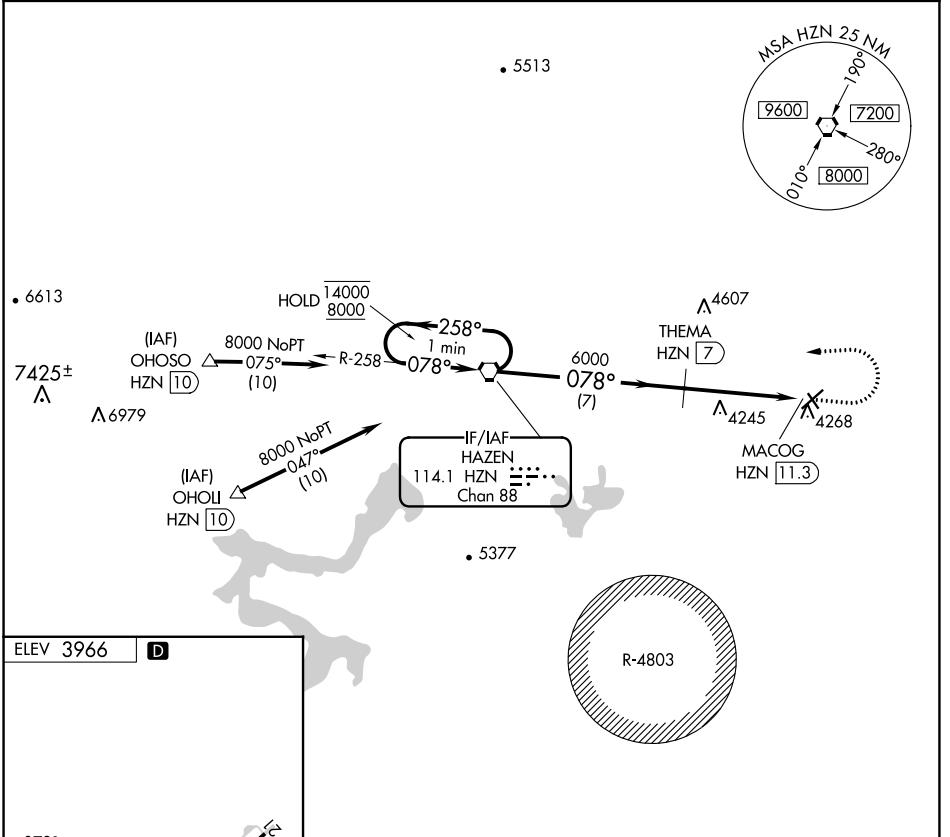
SW-4, 22 FEB 2024 to 21 MAR 2024

VORTAC HZN 114.1 Chan 88	APP CRS 078°	Rwy Idg TDZE N/A Apt Elev 3966
--	------------------------	---

VOR-B
FALLON MUNI (F'LX)

DME required. ▼ Circling NA to Rwy 13 and 31. Circling to Rwy 21 NA at night. When local altimeter not received, use Fallon NAS altimeter setting.	MISSED APPROACH: Climb to 6100 then climbing left turn to 8000 direct HZN VORTAC and hold.
---	--

AWOS-AV 118.25	KNFL ATIS* 370.925	NAVY FALLON APP CON* 120.85 360.2	UNICOM 122.8 (CTAF)
--------------------------	------------------------------	---	-------------------------------



One Minute Holding Pattern	HZN VORTAC		6100	8000	HZN
	14000	8000	↑	↻	◻
258°		078°	THEMATA HZN 7		
078°		078°	MACOG HZN 11.3		
		6000			
		7 NM	4.3 NM		
CATEGORY	A	B	C	D	
☑ CIRCLING	4620-1	654 (700-1)	4620-1¾ 654 (700-1¾)	4620-2 654 (700-2)	

SW-4, 22 FEB 2024 to 21 MAR 2024

SW-4, 22 FEB 2024 to 21 MAR 2024