

NDB FHR <b>284</b>	APP CRS <b>339°</b>	Rwy ldg TDZE Apt Elev	<b>3402</b> <b>108</b> <b>113</b>
-----------------------	------------------------	-----------------------------	---

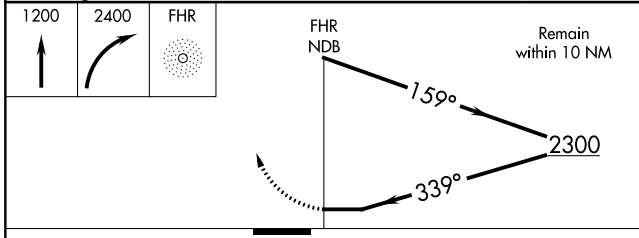
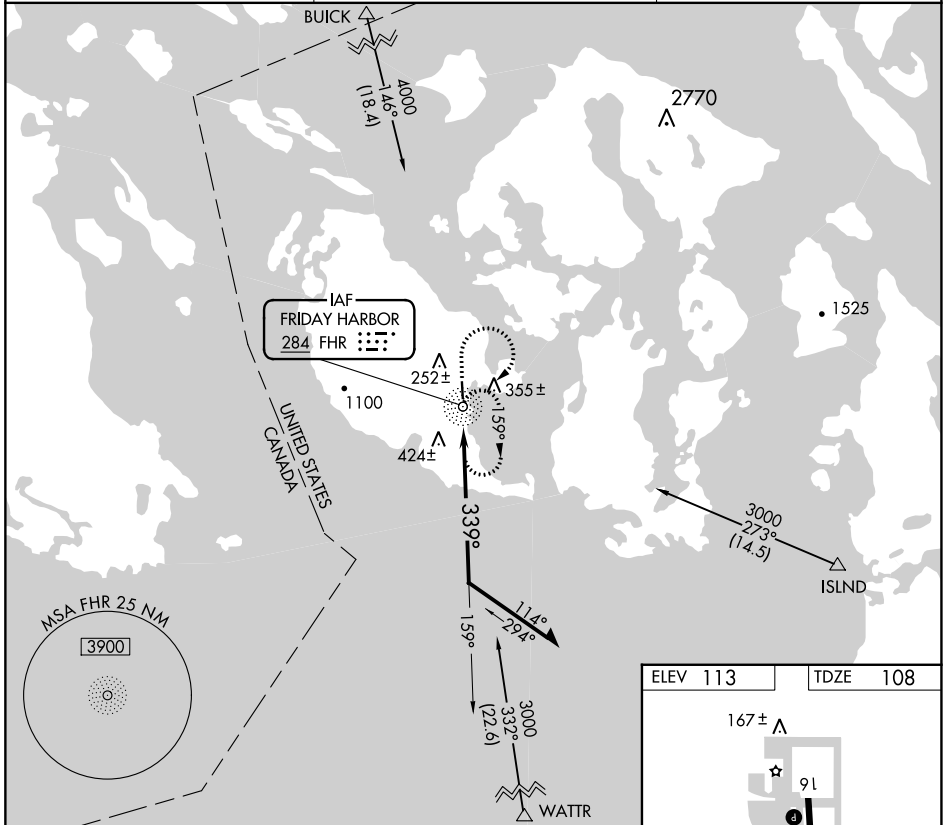
# NDB RWY 34

FRIDAY HARBOR (FHR)

**▼** Circling NA west of Rwy 16-34.  
Visibility reduction by helicopters NA.

MISSED APPROACH: Climb to 1200 then climbing right turn to 2400 direct FHR NDB and hold, continue climb-in-hold to 2400.

ASOS <b>135.675</b>	WHIDBEY APP CON <b>118.2 285.65</b>	CTAF <b>128.25</b> <b>①</b>
------------------------	--	--------------------------------



ELEV 113	TDZE 108
----------	----------

REIL Rwy 16 and 34 **①**  
MIRL Rwy 16-34 **①**

CATEGORY	A	B	C	D
S-34	800-1	692 (700-1)	800-2 692 (700-2)	NA
CIRCLING	800-1 687 (700-1)	820-1 707 (800-1)	840-2 727 (800-2)	NA

NW-1, 22 FEB 2024 to 21 MAR 2024

NW-1, 22 FEB 2024 to 21 MAR 2024

WAAS CH <b>40024</b> <b>W34A</b>	APP CRS <b>341°</b>	Rwy Idg TDZE Apt Elev	<b>3402</b> <b>108</b> <b>113</b>
--	------------------------	-----------------------------	---

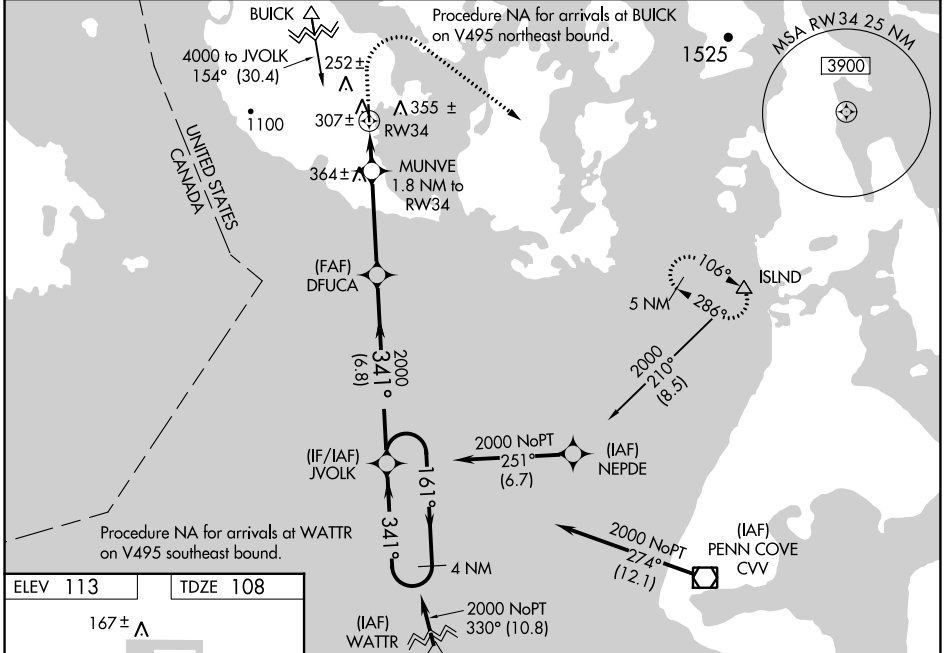
# RNAV (GPS) RWY 34

FRIDAY HARBOR (FHR)

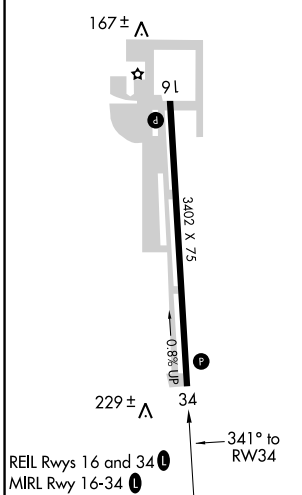
**⚠** When VGSI inop, Circling Rwy 16 NA at night. Baro-VNAV NA when using Burlington/Mount Vernon altimeter setting. For uncompensated Baro-VNAV systems, LNAV/VNAV NA below -15°C (5°F) or above 43°C (109°F). When VGSI inop, Straight-in/Circling Rwy 34 procedure NA at night. Circling NA west of Rwy 16-34. DME/DME RNP-0.3 NA. Helicopter visibility reduction below 1 SM NA. When local altimeter setting not received, use Burlington/Mount Vernon altimeter setting; increase all DA 61 feet and all MDA 80 feet; increase LPV visibility all Cats ¼ mile, LNAV/VNAV visibility all Cats ¼ mile, LNAV visibility Cat C ¼ mile, and Circling visibility Cat C ¼ mile.

**MISSED APPROACH:** Climb to 1000, then climbing right turn to 5000 direct ISLND and hold, continue climb-in-hold to 5000.

ASOS <b>135.675</b>	WHIDBEY APP CON <b>118.2 285.65</b>	CTAF <b>128.25</b>
------------------------	--	-----------------------



ELEV 113	TDZE 108
----------	----------



1000 5000 ISLND VGSI and RNAV glidepath not coincident (VGSI Angle 3.50/TCH 42).	DFUCA			JVOLK	4 NM Holding Pattern
	* LNAV only	MUNVE 1.8 NM to RWY 34	2000	2000	2000
	1.8 NM	3.7 NM	6.8 NM		
CATEGORY	A	B	C	D	
LPV DA	467-1 1/8	359 (400-1 1/8)		NA	
LNAV/VNAV DA	513-1 1/4	405 (400-1 1/4)		NA	
LNAV MDA	620-1	512 (600-1)	620-1 1/2	512 (600-1 1/2)	NA
CIRCLING	720-1 607 (700-1)	820-1 707 (800-1)	840-2 727 (800-2)	NA	

NW-1, 22 FEB 2024 to 21 MAR 2024

NW-1, 22 FEB 2024 to 21 MAR 2024