

WAAS CH <b>81932</b> <b>W12A</b>	APP CRS <b>125°</b>	Rwy Idg TDZE Apt Elev	<b>4257</b> <b>1060</b> <b>1060</b>
--	------------------------	-----------------------------	---

# RNAV (GPS) RWY 12

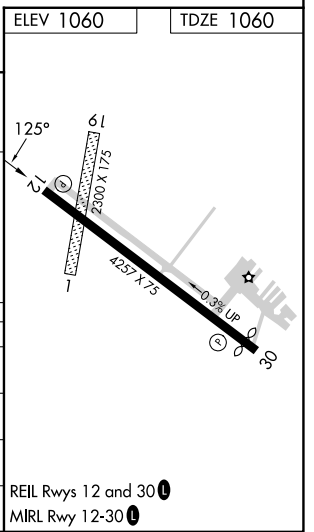
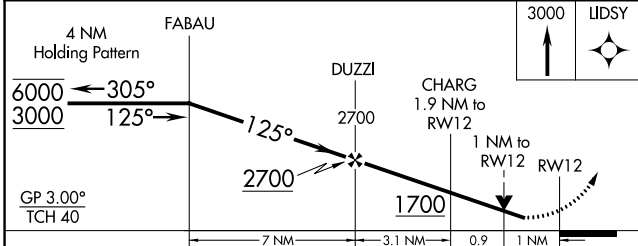
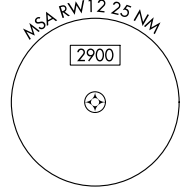
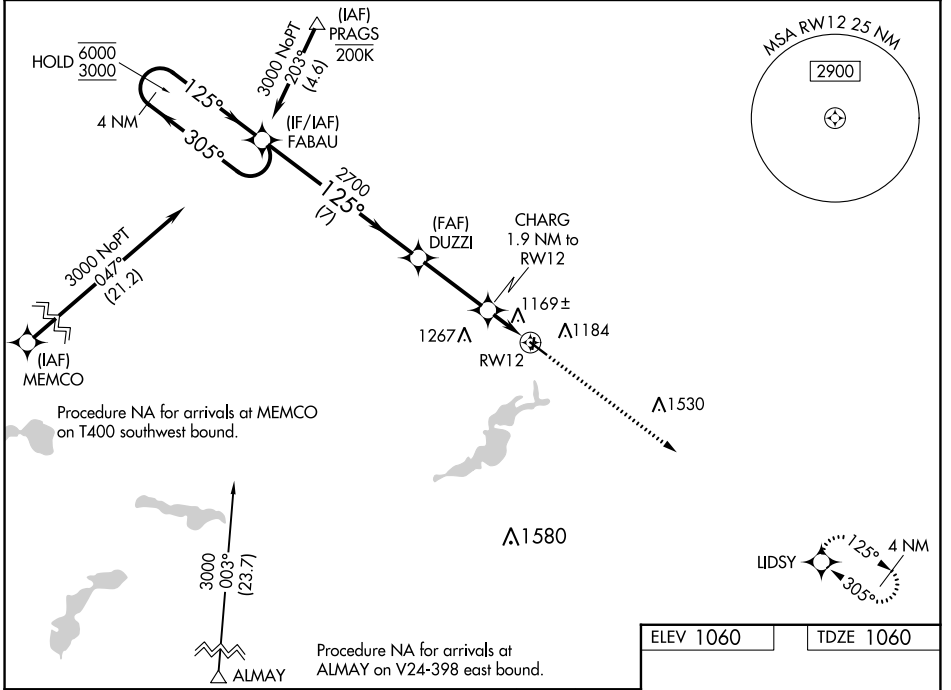
FARIBAULT MUNI-LIZ WALL STROHFUS FLD (F'BL)

RNP APCH - GPS.

**⚠** Circling NA to Rwys 1 and 19. Rwy 12 helicopter visibility reduction below 3/4 SM NA. For uncompensated Baro-VNAV systems, LNAV/VNAV NA below -17°C or above 54°C.

MISSED APPROACH: Climb to 3000 direct LIDSY and hold.

AWOS-3 <b>120.2</b>	MINNEAPOLIS APP CON <b>134.7 284.7</b>	GCO <b>121.725</b>	UNICOM <b>122.8 (CTAF) 0</b>
------------------------	---	-----------------------	---------------------------------



CATEGORY	A	B	C	D
LPV DA	1310-1	250 (300-1)		NA
LNAV/VNAV DA	1339-1	279 (300-1)		NA
LNAV MDA	1420-1	360 (400-1)		NA
CIRCLING	1520-1	460 (500-1)	1740-2 680 (700-2)	NA

NC-1, 22 FEB 2024 to 21 MAR 2024

NC-1, 22 FEB 2024 to 21 MAR 2024

REIL Rwys 12 and 30 0  
MRL Rwy 12-30 0

WAAS CH <b>61032</b> <b>W30A</b>	APP CRS <b>305°</b>	Rwy Idg TDZE Apt Elev	<b>4027</b> <b>1056</b> <b>1060</b>
--	------------------------	-----------------------------	---

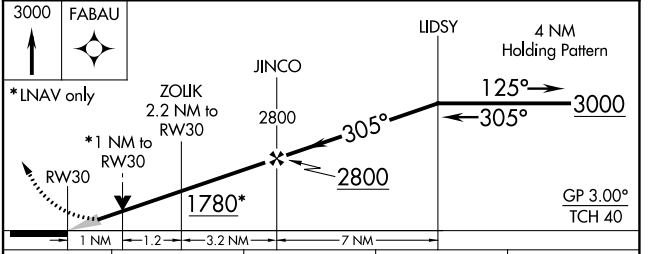
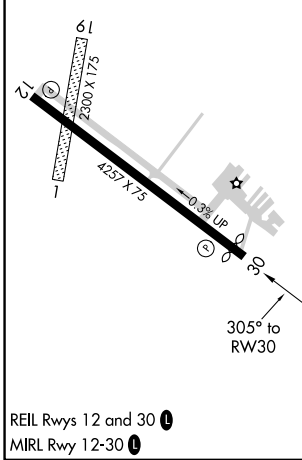
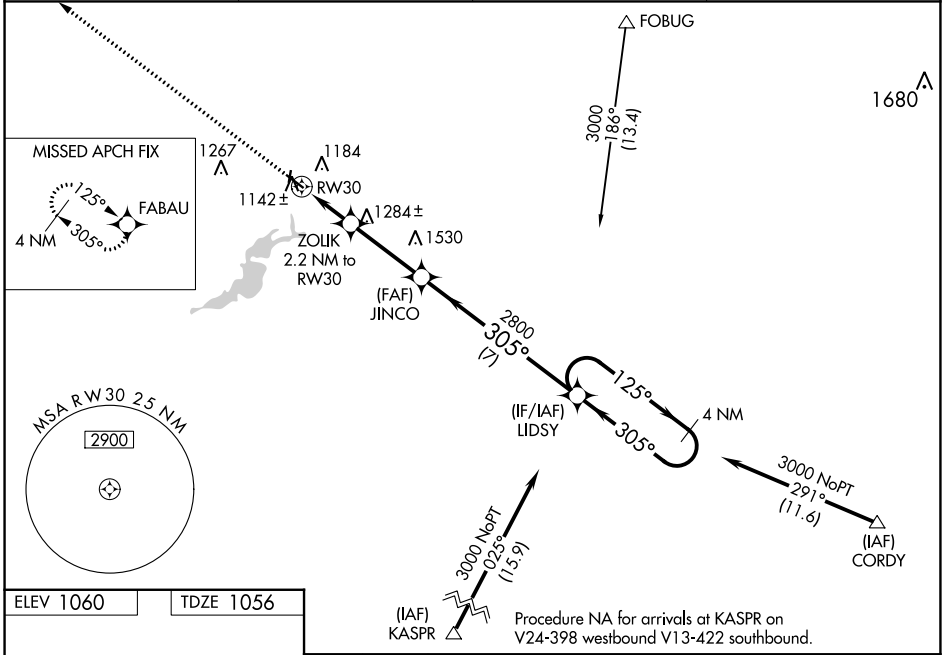
# RNAV (GPS) RWY 30

FARIBAULT MUNI-LIZ WALL STROHFUS FLD (F'BL)

**⚠** For uncompensated Baro-VNAV systems, LNAV/VNAV NA below -17°C (2°F) or above 54°C (130°F). DME/DME RNP-0.3 NA. When local altimeter setting not received, use Owatonna altimeter setting and increase all DA 41 feet and all MDA 60 feet; increase LNAV Cat C visibility 1/8 mile. Baro-VNAV and VDP NA when using Owatonna altimeter setting. Circling NA to Rwy 1 and 19.

MISSED APPROACH: Climb to 3000 direct FABAU and hold.

AWOS-3 <b>120.2</b>	MINNEAPOLIS APP CON <b>134.7 284.7</b>	GCO <b>121.725</b>	UNICOM <b>122.8 (CTAF) 0</b>
------------------------	---	-----------------------	---------------------------------



CATEGORY	A	B	C	D
LPV DA	1306-1	250 (300-1)		NA
LNAV/VNAV DA	1306-1	250 (300-1)		NA
LNAV MDA	1400-1	344 (400-1)		NA
CIRCLING	1520-1	460 (500-1)	1740-2 680 (700-2)	NA

NC-1, 22 FEB 2024 to 21 MAR 2024

NC-1, 22 FEB 2024 to 21 MAR 2024

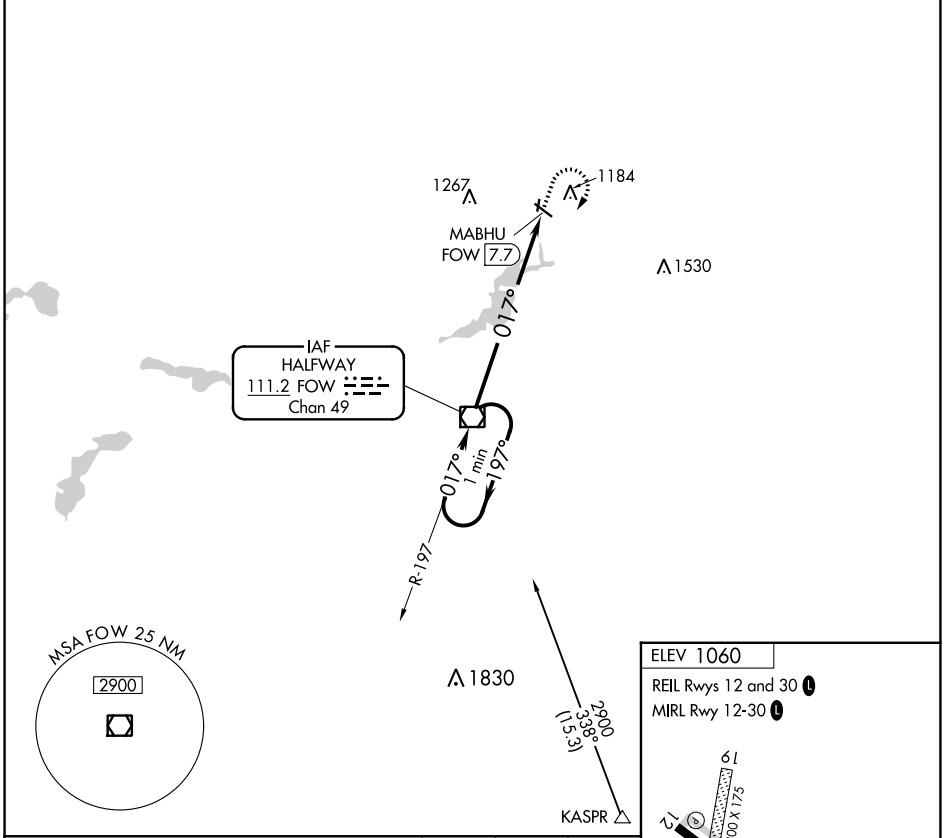
VOR/DME FOW <b>111.2</b> Chan <b>49</b>	APP CRS <b>017°</b>	Rwy Ldg TDZE Apt Elev <b>1060</b>	<b>N/A</b> <b>N/A</b>
---	------------------------	--	--------------------------

**VOR-A**  
FARIBAULT MUNI-LIZ WALL STROHFUS FLD (F'BL)

**NA** When local altimeter setting not received, use Owatonna altimeter setting and increase all MDAs 60 feet.

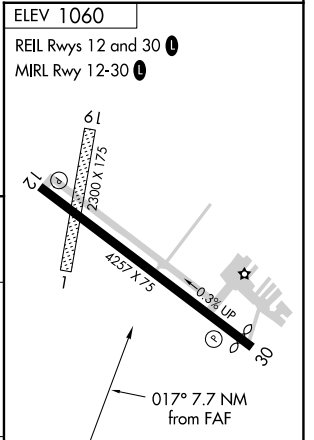
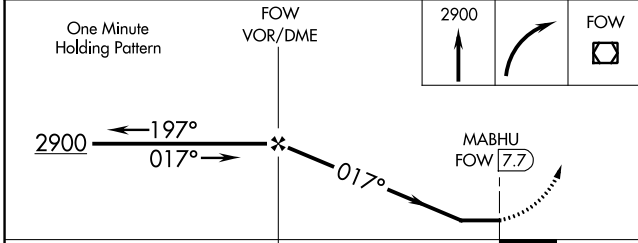
MISSED APPROACH: Climb to 2900 then right turn direct FOW VOR/DME and hold.

AWOS-3 <b>120.2</b>	MINNEAPOLIS APP CON <b>134.7 284.7</b>	GCO <b>121.725</b>	UNICOM <b>122.8 (CTAF)</b>
------------------------	---	-----------------------	-------------------------------



NC-1, 22 FEB 2024 to 21 MAR 2024

NC-1, 22 FEB 2024 to 21 MAR 2024



CATEGORY	A	B	C	D	FAF to MAP 7.7 NM						
CIRCLING	1680-1	620 (700-1)	1740-2	680 (700-2)	NA	Knots	60	90	120	150	180
						Min:Seq	7:42	5:08	3:51	3:05	2:34