

WAAS CH 40229 W17A	APP CRS 166°	Rwy Idg TDZE Apt Elev	4280 184 184
--	------------------------	-----------------------------	---

RNAV (GPS) RWY 17

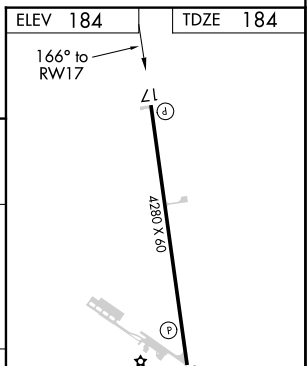
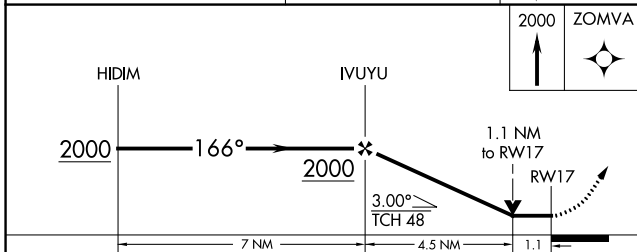
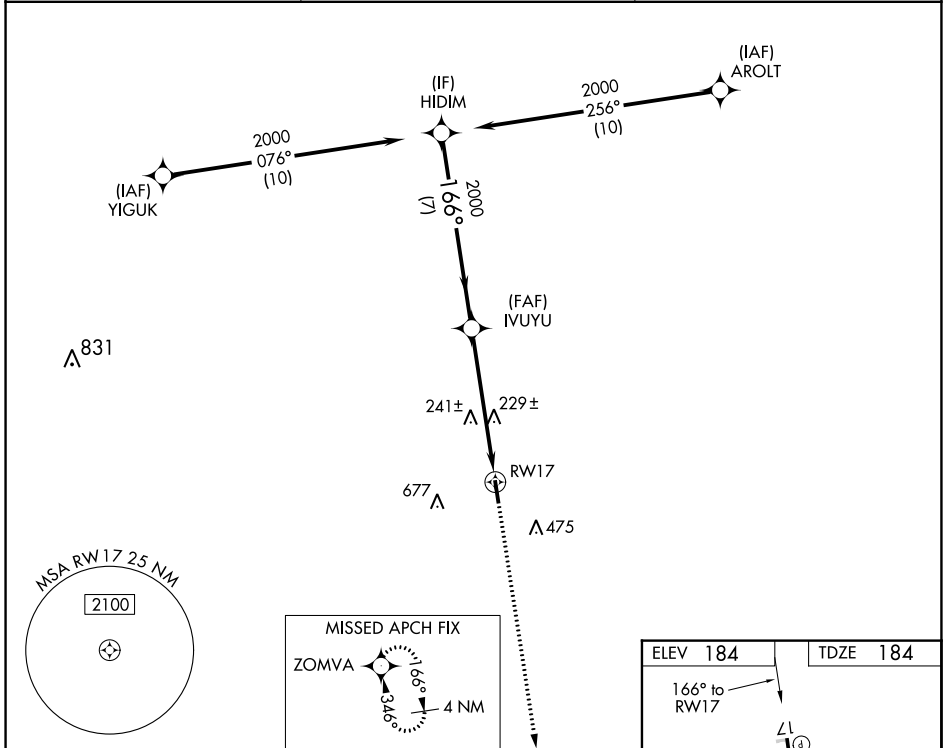
EAGLE LAKE (ELA)

RNP APCH-GPS.

▼ Rwy 17 helicopter visibility reduction below 3/4 SM NA. Circling Rwy 35 NA at night. When local altimeter setting not received, use Wharton altimeter setting and increase all MDA 80 feet, increase LP, LNAV and Circling Cat C visibility 1/4 SM. VDP NA when using Wharton altimeter setting.

▲ MISSED APPROACH: Climb to 2000 direct ZOMVA and hold.

AWOS-3PT 128.475	HOUSTON APP CON 124.225 306.975	CTAF 122.9 0
----------------------------	---	------------------------



CATEGORY	A	B	C	D
LP MDA	580-1	396 (400-1)	580-1 1/8 396 (400-1 1/8)	NA
LNAV MDA	600-1	416 (500-1)	600-1 1/8 416 (500-1 1/8)	NA
CIRCLING	860-1	676 (700-1)	1040-2 1/2 856 (900-2 1/2)	NA

MIRL Rwy 17-35 0

WAAS CH 45729 W35A	APP CRS 346°	Rwy Idg TDZE 184 Apt Elev 184	4280
--	------------------------	---	-------------

RNAV (GPS) RWY 35

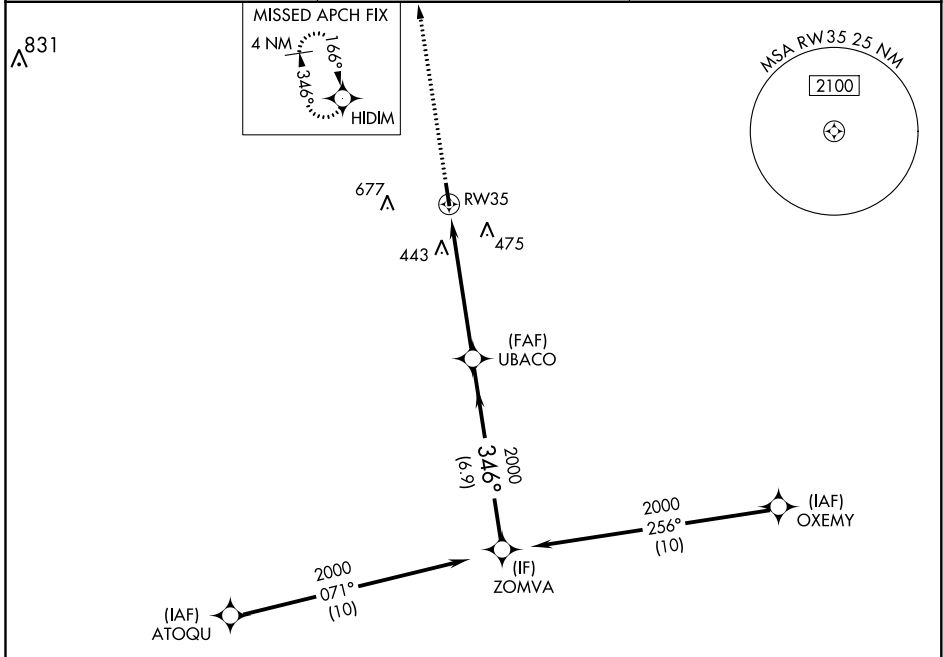
EAGLE LAKE (ELA)

RNP APCH.

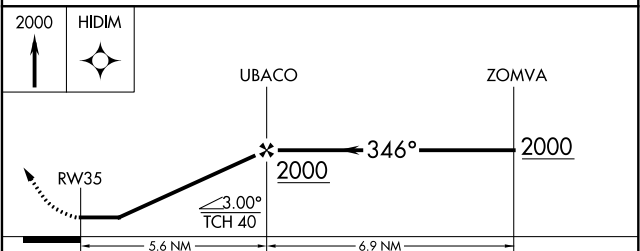
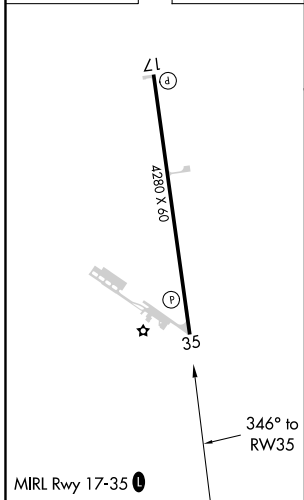
▼ Rwy 35 helicopter visibility reduction below 1 SM NA.
▲ Straight-in and Circling Rwy 35 NA at night.

MISSED APPROACH: Climb to 2000 direct HIDIM and hold.

AWOS-3PT 128.475	HOUSTON APP CON 124.225 306.975	CTAF 122.9 0
----------------------------	---	------------------------



ELEV 184	TDZE 184
-----------------	-----------------



CATEGORY	A	B	C	D
LP MDA	620-1	436 (500-1)	620-1¼ 436 (500-1¼)	NA
LNAV MDA	700-1	516 (600-1)	700-1⅜ 516 (600-1⅜)	NA
<input checked="" type="checkbox"/> CIRCLING	760-1 576 (600-1)	840-1 656 (700-1)	1040-2½ 856 (900-2½)	NA

SC-5, 19 MAY 2022 to 16 JUN 2022

SC-5, 19 MAY 2022 to 16 JUN 2022

VOR ELA 116.4 Chan 111	APP CRS 177°	Rwy Idg TDZE Apt Elev	4280 184 184
-------------------------------------	------------------------	-----------------------------	---

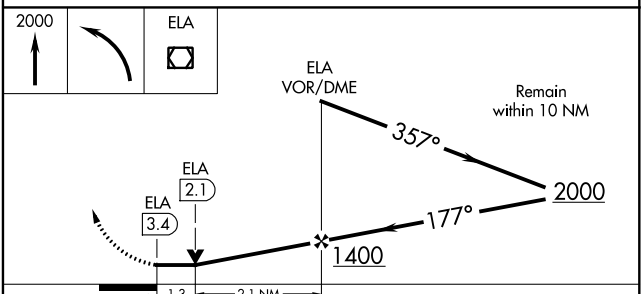
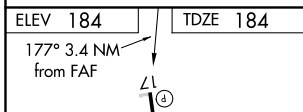
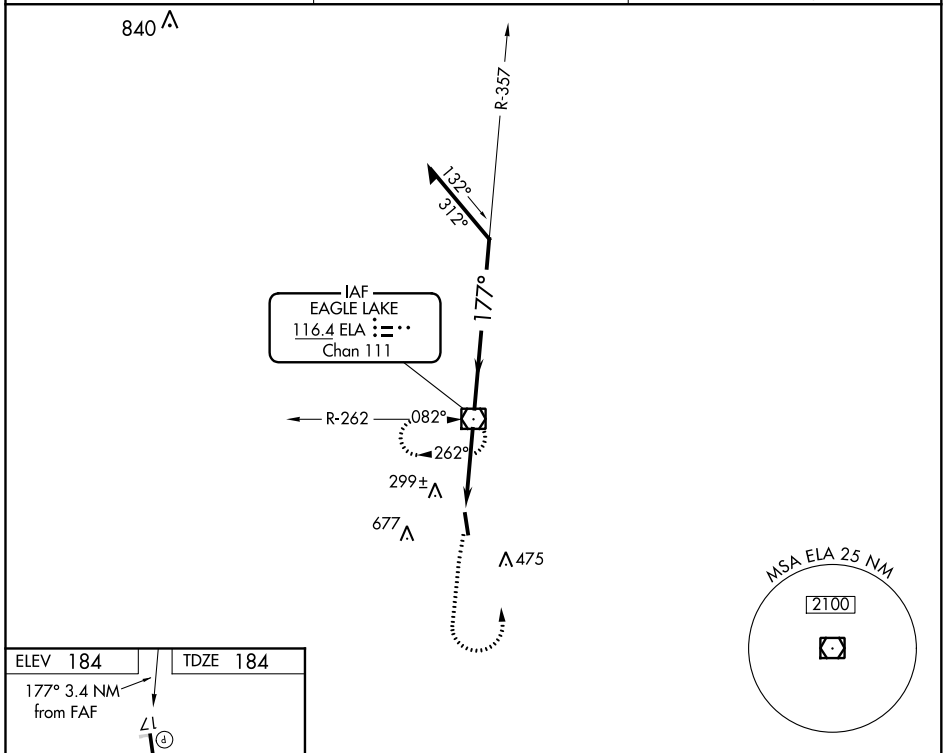
VOR RWY 17

EAGLE LAKE (ELA)

▼ Circling Rwy 35 NA at night. Rwy 17 helicopter visibility reduction below ¼ SM NA.
▲ NA VDP NA when using Wharton altimeter setting. When local altimeter setting not received, use Wharton altimeter setting and increase all MDA 80 feet and S-17 and Circling Cat C visibility ¼ SM.

MISSED APPROACH: Climb to 2000, then left turn direct ELA VOR/DME and hold.

AWOS-3PT 128.475	HOUSTON APP CON 124.225 306.975	CTAF 122.9
----------------------------	---	----------------------



MIRL Rwy 17-35 **●**

FAF to MAP 3.4 NM

Knots	60	90	120	150	180
Min:Sec	3:24	2:16	1:42	1:22	1:08

CATEGORY	A	B	C	D
S-17	660-1	476 (500-1)	660-1 3/8 476 (500-1 3/8)	NA
CIRCLING	860-1	676 (700-1)	1040-2 1/2 856 (900-2 1/2)	NA

SC-5, 19 MAY 2022 to 16 JUN 2022

SC-5, 19 MAY 2022 to 16 JUN 2022