

WAAS CH 77909	APP CRS W27A 269°	Rwy Idg TDZE Apt Elev	5503 387 387
-------------------------	---------------------------------------	-----------------------------	---

RNAV (GPS) RWY 27

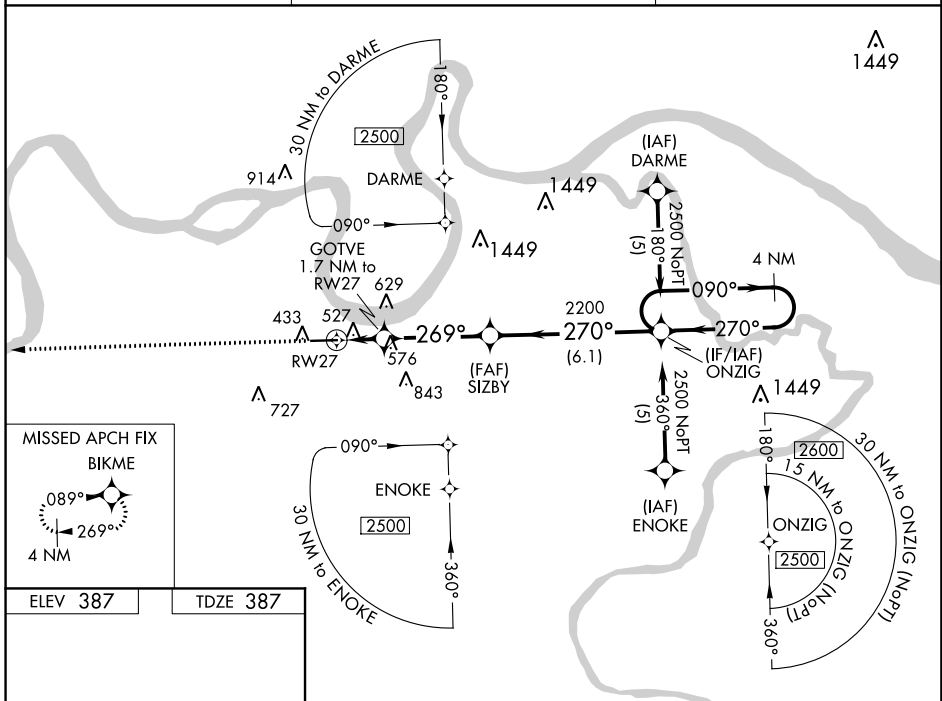
HENDERSON CITY-COUNTY (E.H.R.)

RNP APCH.

Baro-VNAV NA when using Evansville altimeter setting. For uncompensated Baro-VNAV systems, LNAV/VNAV NA below -15°C or above 48°C. Rwy 27 helicopter visibility reduction below 3/4 SM NA. When local altimeter setting not received, use Evansville altimeter setting and increase all DA 41 feet and all MDA 60 feet and LPV all Cats, LNAV/VNAV all Cats and LNAV Cats C/D visibilities 1/4 mile.

MISSED APPROACH: Climb to 2500 direct BIKME and hold.

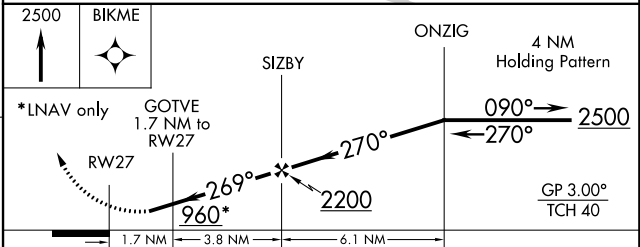
AWOS-3PT 118.85	EVANSVILLE APP CON * 124.025 257.8	UNICOM 122.8 (CTAF) 0
---------------------------	--	--



MISSED APCH FIX BIKME

ELEV 387 TDZE 387

REIL Rwy 9 and 27 **0**
MIRL Rwy 9-27 **0**



CATEGORY	A	B	C	D
LPV DA		733-1 1/4	346 (400-1 1/4)	
LNAV/VNAV DA		827-1 1/2	440 (500-1 1/2)	
LNAV MDA	840-1	453 (500-1)	840-1 3/8 453 (500-1 3/8)	840-1 1/2 453 (500-1 1/2)

SE-1, 07 NOV 2019 to 05 DEC 2019

SE-1, 07 NOV 2019 to 05 DEC 2019

RNAV (GPS) RWY 9

HENDERSON CITY-COUNTY (E.H.R.)

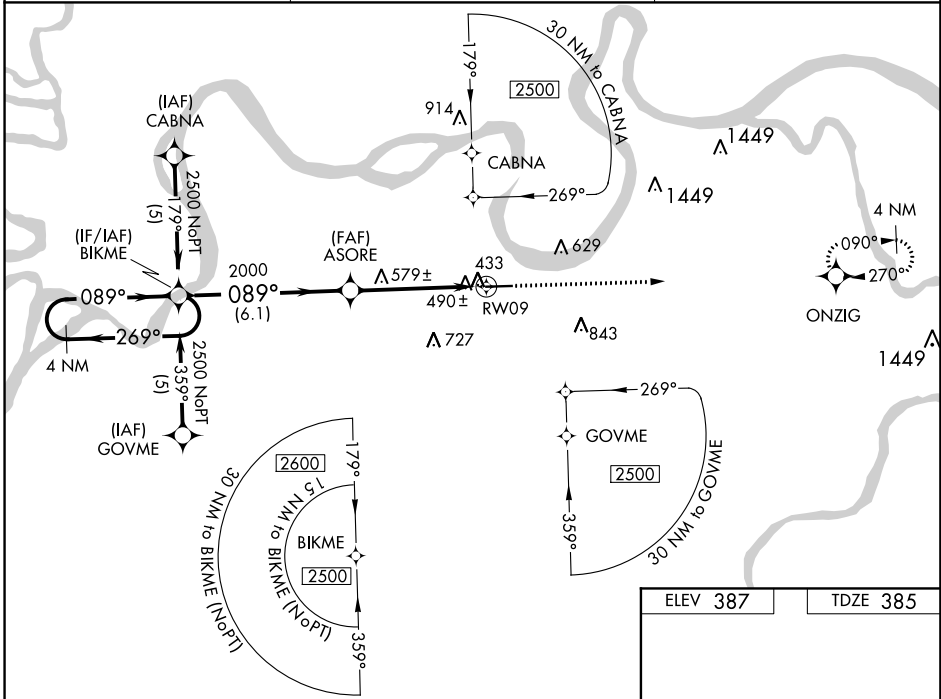
WAAS CH 97709 W09A	APP CRS 089°	Rwy Idg TDZE Apt Elev	5503 385 387
--	------------------------	-----------------------------	---

RNP APCH.

▼ For uncompensated Baro-VNAV systems, LNAV/VNAV NA below -15°C or above 48° C.
 ▲ Rwy 9 helicopter visibility reduction below ¾ SM NA. Baro-VNAV and VDP NA when using Evansville altimeter setting. When local altimeter setting not received, use Evansville altimeter setting and increase all DA 41 feet and all MDA 60 feet and LPV all Cats, LNAV/VNAV all Cats and LNAV Cats C/D visibilities ¼ mile.

MISSED APPROACH:
Climb to 2500 direct ONZIG and hold.

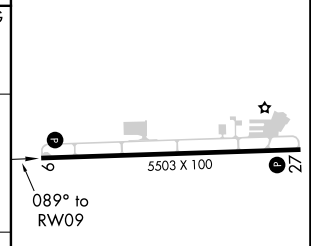
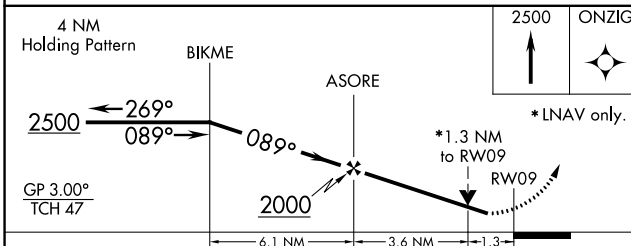
AWOS-3PT 118.85	EVANSVILLE APP CON * 124.025 257.8	UNICOM 122.8 (CTAF) 0
---------------------------	--	---------------------------------



SE-1, 07 NOV 2019 to 05 DEC 2019

SE-1, 07 NOV 2019 to 05 DEC 2019

ELEV 387	TDZE 385
----------	----------



CATEGORY	A	B	C	D
LPV DA	694-1 309 (400-1)			
LNAV/VNAV DA	774-1¼ 389 (400-1¼)			
LNAV MDA	840-1 455 (500-1)	840-1⅝ 455 (500-1⅝)	840-1½ 455 (500-1½)	840-1½ 455 (500-1½)

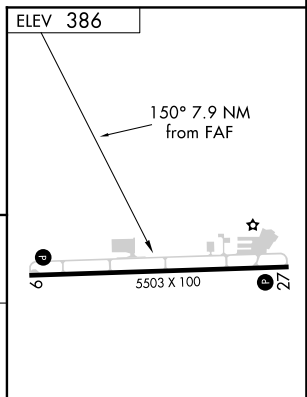
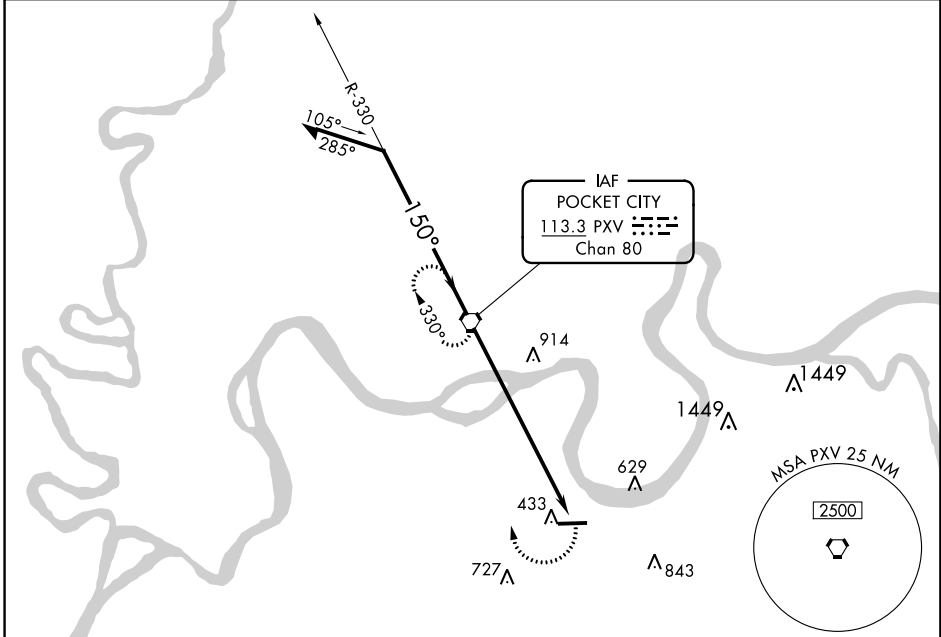
REIL Rwy 9 and 27 0
MIRL Rwy 9-27 0

VORTAC PXV 113.3 Chan 80	APP CRS 150°	Rwy Idg TDZE Apt Elev	N/A N/A 386
--	------------------------	-----------------------------	--

VOR-A
HENDERSON CITY-COUNTY (EHR)

▲ NA If local altimeter setting not received, use Evansville altimeter setting and increase all MDA's 80 feet. **MISSED APPROACH:** Climbing right turn to 2100 direct PXV VORTAC and hold.

AWOS-3PT 118.85	EVANSVILLE APP CON ★ 124.025 257.8	UNICOM 122.8 (CTAF) 0
---------------------------	--	--



CATEGORY	A		B		C		D		FAF to MAP 7.9 NM				
	CIRCLING	920-1	534 (600-1)	920-1½	534 (600-1½)	940-2	554 (600-2)	Knots	60	90	120	150	180
								Min:Sec	7:54	5:16	3:57	3:10	2:38

SE-1, 07 NOV 2019 to 05 DEC 2019

SE-1, 07 NOV 2019 to 05 DEC 2019