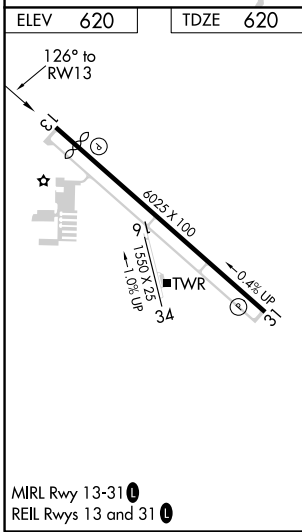
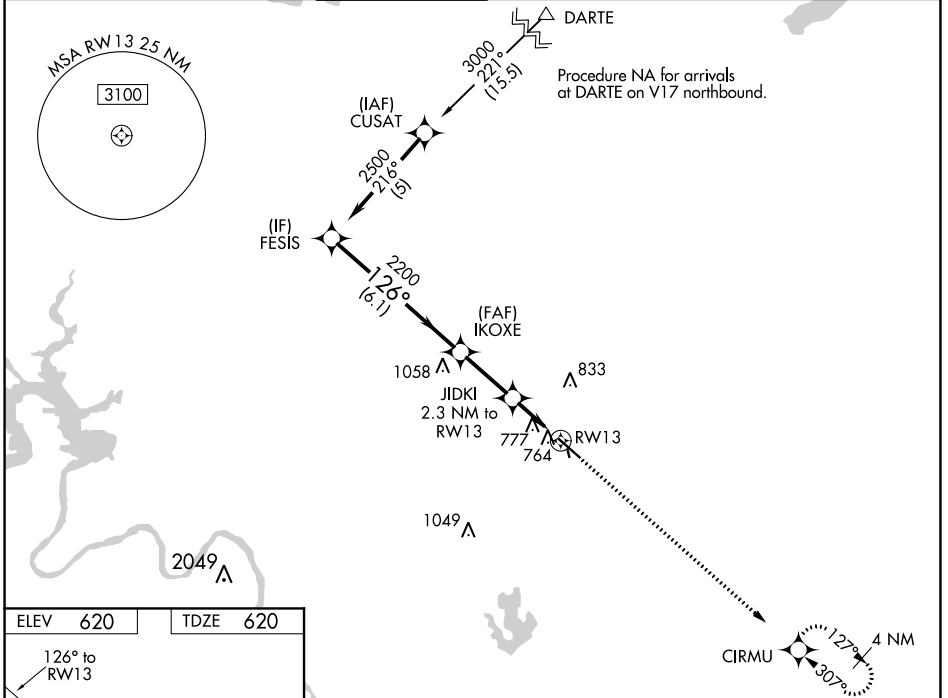


WAAS CH <b>63116</b> <b>W13A</b>	APP CRS <b>126°</b>	Rwy Idg <b>5425</b> TDZE <b>620</b> Apt Elev <b>620</b>
--	------------------------	---

# RNAV (GPS) RWY 13

AUSTIN EXEC (EDC)

RNP APCH.		<p>▼ Baro-VNAV NA when using Austin-Bergstrom Intl altimeter setting. For uncompensated Baro-VNAV systems, LNAV/VNAV NA below -16°C (4°F) or above 47°C (116°F). Visibility reduction by helicopters NA. When local altimeter setting not received, use Austin-Bergstrom Intl altimeter setting: increase LPV DA to 912 feet, increase LNAV/VNAV DA to 1168 feet; increase all MDA 60 feet. VDP NA with Austin-Bergstrom Intl altimeter setting. Circling NA to Rwy 16 and 34.</p>		<p>MISSED APPROACH: Climb to 2100 direct CIRMU and hold.</p>	
AWOS-3 <b>118.825</b>	AUSTIN APP CON <b>127.225 317.65</b>	EXECUTIVE TOWER* <b>120.3 (CTAF) 0</b>	GND CON <b>119.45</b>	CLNC DEL <b>126.025</b> (When twr closed)	UNICOM <b>122.975</b>



ELEV 620	TDZE 620	<p>2100 CIRMU</p> <p>↑</p> <p>*LNAV only.</p>		
<p>FESIS</p> <p>2500</p> <p>Procedure Turn NA</p> <p>GP 3.00°</p> <p>TCH 40</p>	<p>IKOXE</p> <p>2200</p> <p>JIDKI 2.3 NM to RWY13</p> <p>*1.3 NM to RWY13</p> <p>RWY13</p>	<p>6.1 NM</p> <p>2.5 NM</p> <p>1 NM</p> <p>1.3 NM</p>	<p>2100</p> <p>CIRMU</p>	
CATEGORY	A	B	C	D
LPV DA		870-1	250 (300-1)	
LNAV/VNAV DA		1126-1¾	506 (600-1¾)	
LNAV MDA	1080-1	460 (500-1)	1080-1⅝ 460 (500-1⅝)	1080-1½ 460 (500-1½)
<b>C</b> CIRCLING	1140-1 520 (600-1)	1160-1 540 (600-1)	1160-1½ 540 (600-1½)	1220-2 600 (600-2)

SC-3, 07 OCT 2021 to 04 NOV 2021

SC-3, 07 OCT 2021 to 04 NOV 2021

