

AEROZ TWO DEPARTURE (RNAV)
(AEROZ2.AEROZ) 22APR21

AWOS-3
118.825
CLNC DEL
126.025 (When twr closed)
UNICOM
122.975
AUSTIN DEP CON
127.225 317.65

SAN ANGELO
SJT

TAKEOFF MINIMUMS
Rwys 16, 34: NA-Environmental.
Rwys 13, 31: Standard.

TOP ALTITUDE:
ASSIGNED BY ATC

NOTE: RADAR required.
NOTE: DME/DME/IRU or GPS required.
NOTE: RNAV 1.

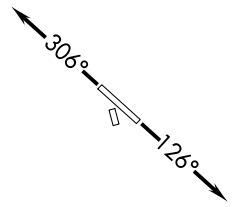


FL180
293°
(91)

AEROZ

AMUSE
5000

293°
(33)



NOTE: Chart not to scale.

DEPARTURE ROUTE DESCRIPTION

TAKEOFF RUNWAY 13: Climb on heading 126° or as assigned by ATC for vectors to cross AMUSE at or above 5000, thence. . . .
TAKEOFF RUNWAY 31: Climb on heading 306° or as assigned by ATC for vectors to cross AMUSE at or above 5000, thence. . . .
...on track 293° to AEROZ, then on SAN ANGELO TRANSITION. Maintain altitude assigned by ATC. Expect filed altitude 10 minutes after departure.

SAN ANGELO TRANSITION (AEROZ2.SJT)

AUSTIN, TEXAS
AUSTIN EXEC (EDC)

(AEROZ2.AEROZ) 21112
AEROZ TWO DEPARTURE (RNAV)

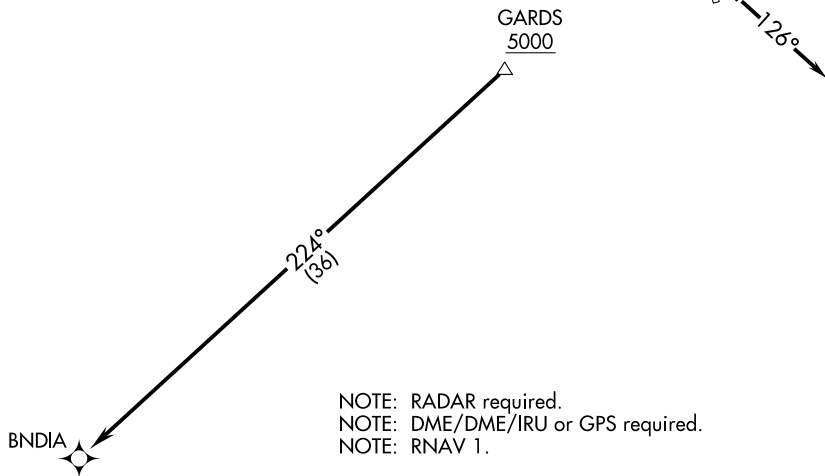
AL-5891 (FAA)

AUSTIN EXEC (EDC)
AUSTIN, TEXAS

BNDIA THREE DEPARTURE (RNAV)

AWOS-3
 118.825
 CLNC DEL
 126.025 (when twr closed)
 EXECUTIVE TOWER ★
 120.3 (CTAF)
 UNICOM
 122.975
 AUSTIN DEP CON
 127.225 317.65

**TOP ALTITUDE:
 ASSIGNED BY ATC**



TAKEOFF MINIMUMS:
 Rwy 16, 34: NA-Environmental.
 Rwy 13, 31: Standard.

NOTE: Chart not to scale.

DEPARTURE ROUTE DESCRIPTION

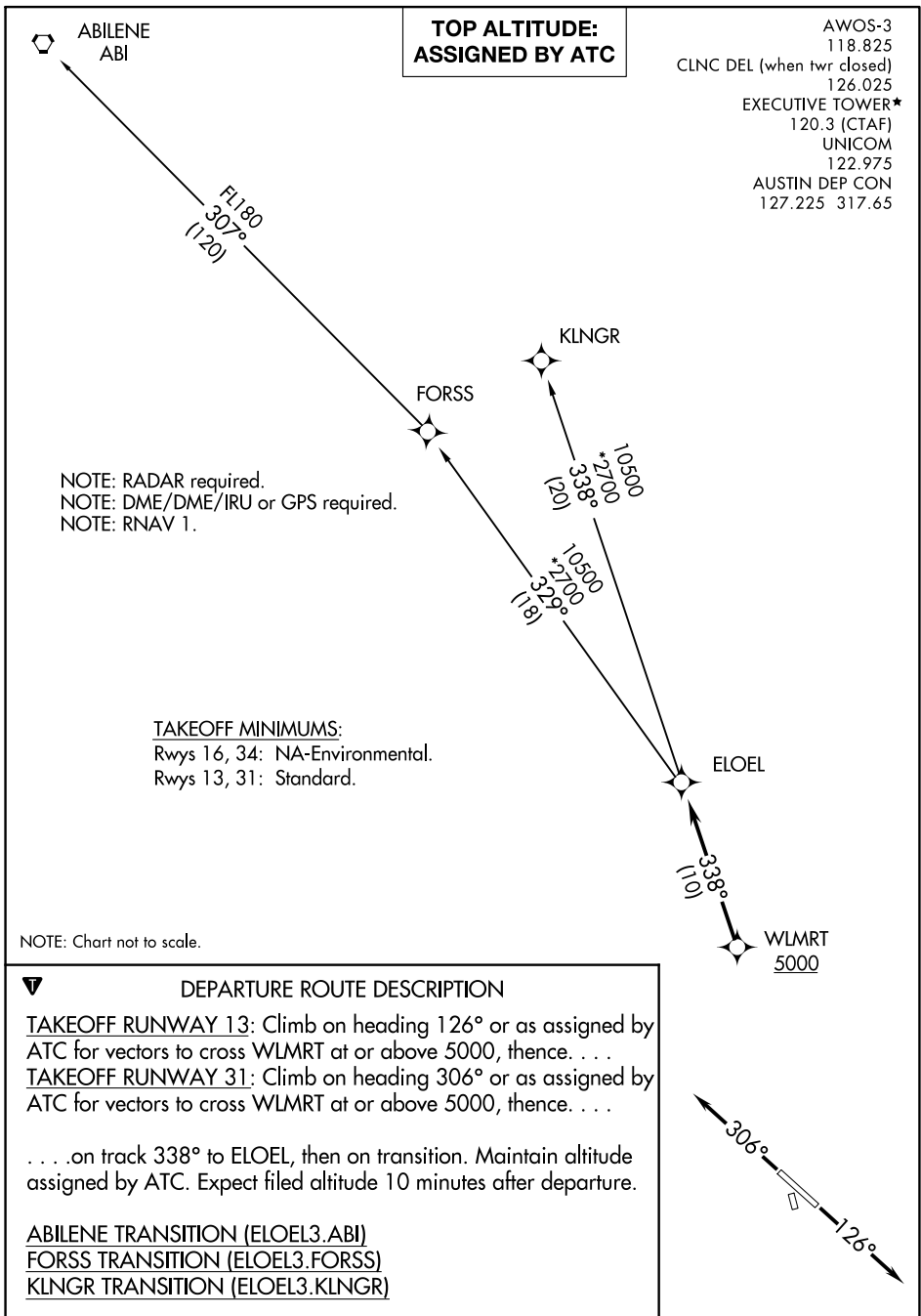
TAKEOFF RUNWAY 13: Climb on heading 126° or as assigned by ATC for vectors to cross GARDS at or above 5000, thence. . . .

TAKEOFF RUNWAY 31: Climb on heading 306° or as assigned by ATC for vectors to cross GARDS at or above 5000, thence. . . .

. . . .on track 224° to BNDIA. Maintain altitude assigned by ATC. Expect filed altitude 10 minutes after departure.

ELOEL THREE DEPARTURE (RNAV)

AUSTIN, TEXAS



**TOP ALTITUDE:
ASSIGNED BY ATC**

AWOS-3
118.825
CLNC DEL (when twr closed)
126.025
EXECUTIVE TOWER*
120.3 (CTAF)
UNICOM
122.975
AUSTIN DEP CON
127.225 317.65

NOTE: RADAR required.
NOTE: DME/DME/IRU or GPS required.
NOTE: RNAV 1.

TAKEOFF MINIMUMS:
Rwys 16, 34: NA-Environmental.
Rwys 13, 31: Standard.

NOTE: Chart not to scale.

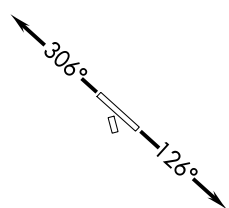
DEPARTURE ROUTE DESCRIPTION

TAKEOFF RUNWAY 13: Climb on heading 126° or as assigned by ATC for vectors to cross WLMRT at or above 5000, thence. . . .

TAKEOFF RUNWAY 31: Climb on heading 306° or as assigned by ATC for vectors to cross WLMRT at or above 5000, thence. . . .

. . . on track 338° to ELOEL, then on transition. Maintain altitude assigned by ATC. Expect filed altitude 10 minutes after departure.

ABILENE TRANSITION (ELOEL3.ABI)
FORSS TRANSITION (ELOEL3.FORSS)
KLNGR TRANSITION (ELOEL3.KLNGR)



SC-3, 07 OCT 2021 to 04 NOV 2021

SC-3, 07 OCT 2021 to 04 NOV 2021

ELOEL THREE DEPARTURE (RNAV)

(ELOEL3.ELOEL) 22APR21

AUSTIN, TEXAS
AUSTIN EXEC (EDC)

ILEXY THREE DEPARTURE (RNAV)
(ILEXY3.ILEXY) 22APR21

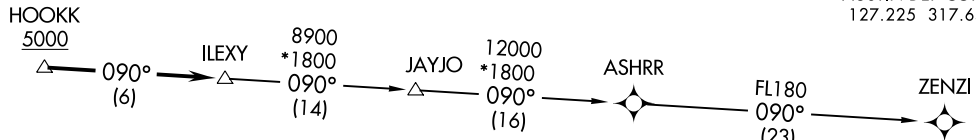
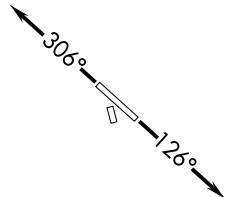
ILEXY3.ILEXY) 21112
ILEXY THREE DEPARTURE (RNAV)

AL-5891 (FAA)

AUSTIN EXEC (EDD)
AUSTIN, TEXAS

**TOP ALTITUDE:
ASSIGNED BY ATC**

AWOS-3
118.825
CLNC DEL (when twr closed)
126.025
EXECUTIVE TOWER ★
120.3 (CTAF)
UNICOM
122.975
AUSTIN DEP CON
127.225 317.65



NOTE: RADAR required.
NOTE: DME/DME/IRU or GPS required.
NOTE: RNAV 1.
NOTE: Houston terminal area arrivals expect routing from ILEXY.
NOTE: JAYJO transition to join V306 only.

TAKEOFF MINIMUMS:
Rwys 16, 34: NA-Environmental.
Rwys 13, 31: Standard.

NOTE: Chart not to scale.

DEPARTURE ROUTE DESCRIPTION

TAKEOFF RUNWAY 13: Climb on heading 126° or as assigned by ATC for vectors to cross HOOKK at or above 5000, thence. . . .
TAKEOFF RUNWAY 31: Climb on heading 306° or as assigned by ATC for vectors to cross HOOKK at or above 5000, thence. . . .
. . . .on track 090° to ILEXY, then on transition. Maintain altitude assigned by ATC. Expect filed altitude 10 minutes after departure.

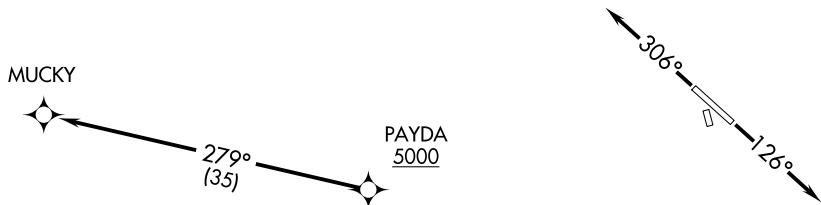
JAYJO TRANSITION (ILEXY3.JAYJO)
ZENZI TRANSITION (ILEXY3.ZENZI)

AUSTIN, TEXAS
AUSTIN EXEC (EDD)

MUCKY THREE DEPARTURE (RNAV)

**TOP ALTITUDE:
ASSIGNED BY ATC**

AWOS-3
118.825
CLNC DEL (when twr closed)
126.025
EXECUTIVE TOWER ★
120.3 (CTAF)
UNICOM
122.975
AUSTIN DEP CON
127.225 317.65



TAKEOFF MINIMUMS:
Rwys 16, 34: NA-Environmental.
Rwys 13, 31: Standard.

NOTE: RADAR required.
NOTE: DME/DME/IRU or GPS required.
NOTE: RNAV 1.

NOTE: Chart not to scale.



DEPARTURE ROUTE DESCRIPTION

TAKEOFF RUNWAY 13: Climb on heading 126° or as assigned by ATC for vectors to cross PAYDA at or above 5000, thence. . . .

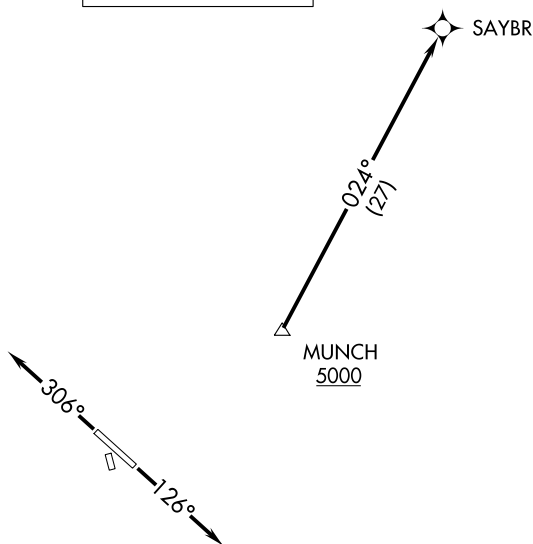
TAKEOFF RUNWAY 31: Climb on heading 306° or as assigned by ATC for vectors to cross PAYDA at or above 5000, thence. . . .

. . . .on track 279° to MUCKY. Maintain altitude assigned by ATC.
Expect filed altitude 10 minutes after departure.

SAYBR THREE DEPARTURE (RNAV)

AWOS-3
 118.825
 CLNC DEL
 126.025 (When twr closed)
 EXECUTIVE TOWER★
 120.3 (CTAF)
 UNICOM
 122.975
 AUSTIN DEP CON
 127.225 317.65

**TOP ALTITUDE:
 ASSIGNED BY ATC**



- NOTE: RADAR required.
- NOTE: DME/DME/IRU or GPS required.
- NOTE: RNAV 1.
- NOTE: For DFW terminal area arrivals at FL230 or below only.

TAKEOFF MINIMUMS

Rwys 16, 34: NA-Environmental.
 Rwys 13, 31: Standard.

NOTE: Chart not to scale.



DEPARTURE ROUTE DESCRIPTION

TAKEOFF RUNWAY 13: Climb on heading 126° or as assigned by ATC for vectors to cross MUNCH at or above 5000, thence. . . .

TAKEOFF RUNWAY 31: Climb on heading 306° or as assigned by ATC for vectors to cross MUNCH at or above 5000, thence. . . .

. . . . on track 024° to SAYBR. Maintain altitude assigned by ATC.
 Expect filed altitude 10 minutes after departure.