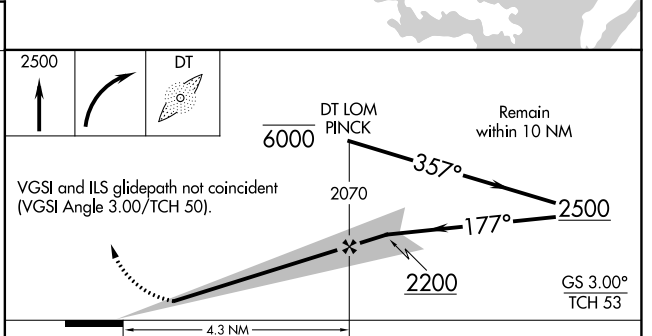
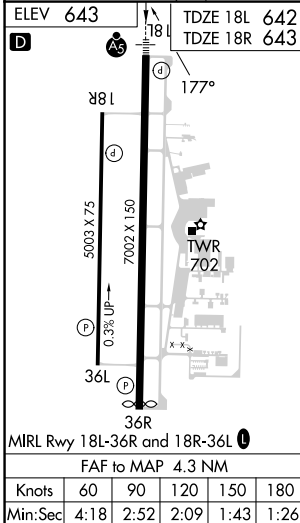
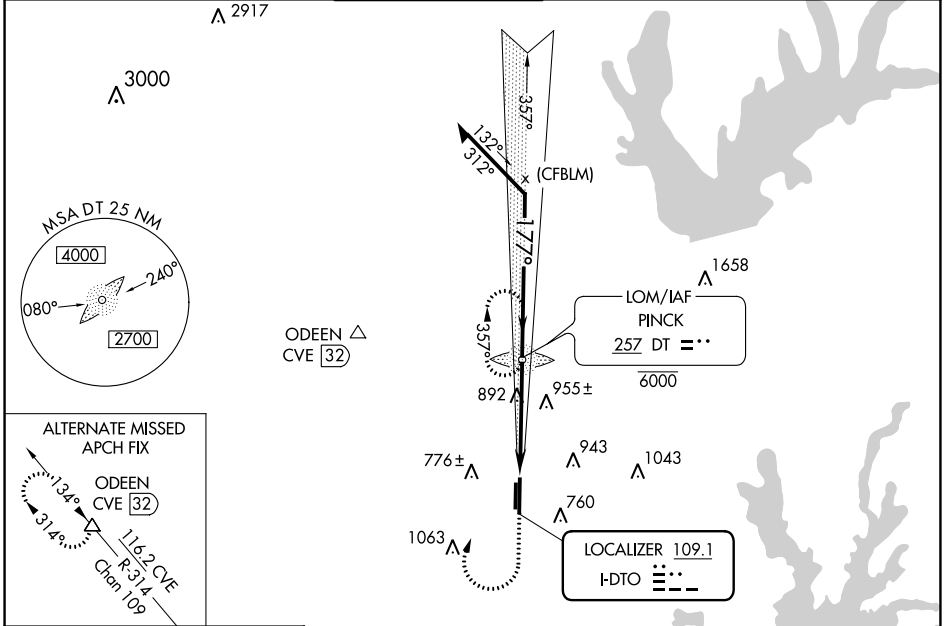


LOC I-DTO 109.1	APP CRS 177°	Rwy Idg 18L 6502 18R 5003 TDZE 642 643 Apt Elev 643 643
---------------------------	------------------------	--

ILS or LOC RWY 18L

DENTON ENTERPRISE (D'TO)

ADF required. RADAR required for procedure entry.				MALSR AG	MISSED APPROACH: Climb to 2500 then right turn direct PINCK LOM and hold.
<p>▼ For inop ALS, increase S-ILS 18L all Cts visibility to ½ SM. For inop ALS, increase S-LOC 18L Cat C/D to 1½ SM.</p> <p>▲ NA</p>					
ATIS 119.325	REGIONAL APP CON 118.1 306.95	DENTON TOWER* 119.95 (CTAF) 0	GND CON 123.95	CLNC DEL 123.95	UNICOM 122.95



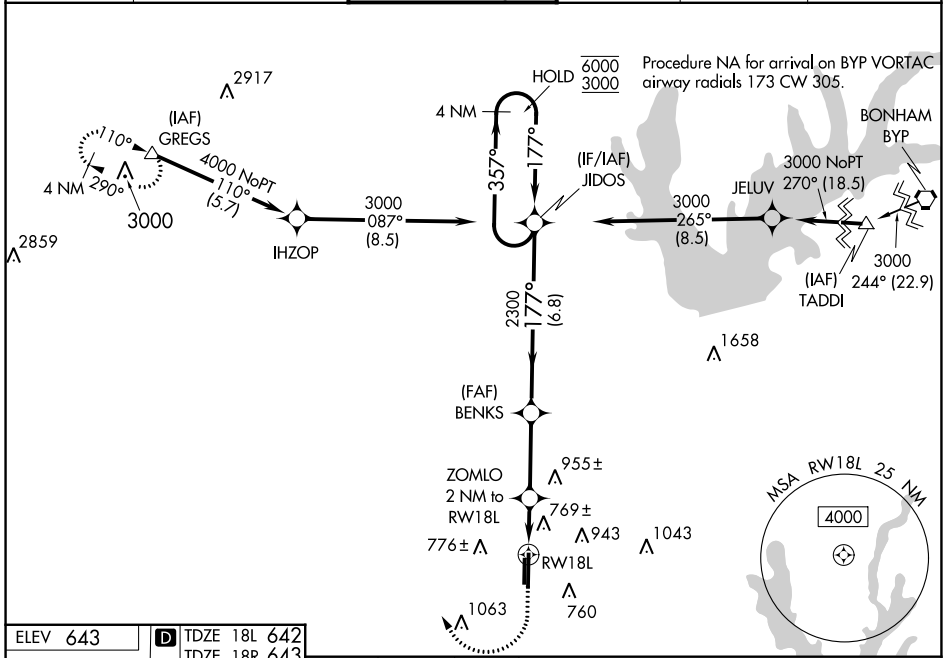
CATEGORY	A	B	C	D
S-ILS 18L		842-½	200 (200-½)	
S-LOC 18L	1160-½	518 (600-½)	1160-1	518 (600-1)
SIDESTEP 18R	1260-1	617 (700-1)	1260-1¾ 617 (700-1¾)	1260-2 617 (700-2)
CIRCLING	1260-1	617 (700-1)	1380-2 737 (800-2)	1380-2¼ 737 (800-2¼)

WAAS CH 82143 W18A	APP CRS 177°	Rwy Idg TDZE Apt Elev	18L 6502	18R 5003 643 643
--	------------------------	-----------------------------	--------------------	--

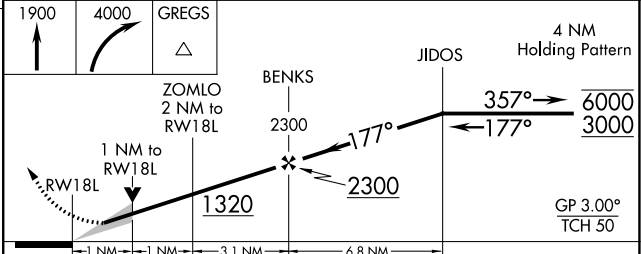
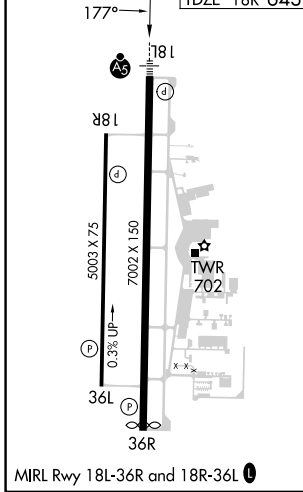
RNAV (GPS) RWY 18L

DENTON ENTERPRISE (D'TO)

RNP APCH-GPS.			MISSED APPROACH: Climb to 1900 then climbing right turn to 4000 direct GREGS and hold.				
For uncompensated Baro-VNAV systems, LNAV/VNAV NA below -9°C or above 54°C. For inop ALS, increase LNAV/VNAV all Cats visibility to 3/8 SM, and LNAV Cats C and D to 1 SM.			ATIS 119.325	REGIONAL APP CON 118.1 306.95	DENTON TOWER * 119.95 (CTAF)	GND CON 123.95	CLNC DEL 123.95



ELEV 643	D TDZE 18L 642
	TDZE 18R 643



CATEGORY	A	B	C	D
LPV DA		842-1/2	200 (200-1/2)	
LNAV/VNAV DA		950-1/2	308 (400-1/2)	
LNAV MDA	1020-1/2	378 (400-1/2)	1020-3/4	378 (400-3/4)
SIDESTEP 18R	1100-1	457 (500-1)	1100-1 1/2	457 (500-2)
C CIRCLING	1100-1	1260-1	1380-2	1380-2 1/4
	457 (500-1)	617 (700-1)	737 (800-2)	737 (800-2 1/4)

SC-2, 22 FEB 2024 to 21 MAR 2024

SC-2, 22 FEB 2024 to 21 MAR 2024

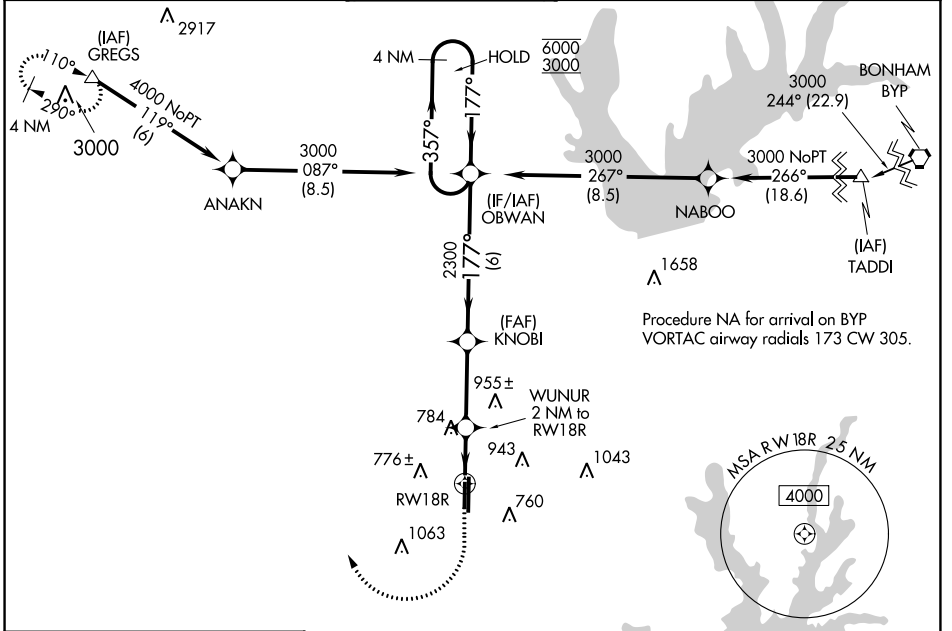
WAAS CH 97643 W18B	APP CRS 177°	Rwy Idg TDZE Apt Elev	18R 5003 643 643	18L 6502 642 643
---------------------------------	------------------------	-----------------------------	--	--

RNAV (GPS) RWY 18R

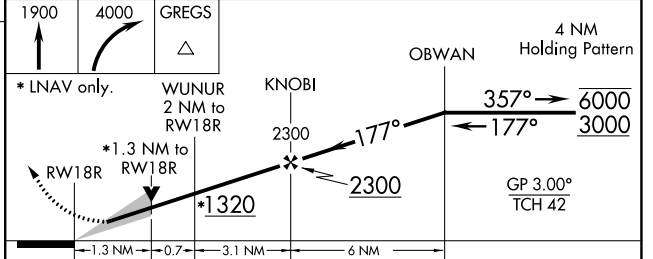
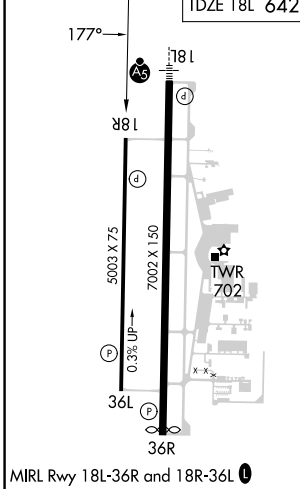
DENTON ENTERPRISE (D.T.O)

RNP APCH.		MISSED APPROACH: Climb to 1900 then climbing right turn to 4000 direct GREGS and hold.			
<p>▽ For uncompensated Baro-VNAV systems, LNAV/VNAV NA below -9°C or above 54°C.</p>					

ATIS 119.325	REGIONAL APP CON 118.1 306.95	DENTON TOWER* 119.95 (CTAF) 0	GND CON 123.95	CLNC DEL 123.95	UNICOM 122.95
------------------------	---	---	--------------------------	---------------------------	-------------------------



ELEV 643	D	TDZE 18R 643 TDZE 18L 642
----------	----------	------------------------------



CATEGORY	A	B	C	D
LPV DA		893-3/4	250 (300-3/4)	
LNAV/VNAV DA		926-7/8	283 (300-7/8)	
LNAV MDA	1100-1	457 (500-1)	1100-13/8	457 (500-13/8)
SIDESTEP 18L	1100-1 1/4	458 (500-1 1/4)	1100-1 3/4	1100-2 1/4
			458 (500-2 1/4)	458 (500-2 1/4)
C CIRCLING	1100-1	1260-1	1380-2	1380-2 1/4
	457 (500-1)	617 (700-1)	737 (800-2)	737 (800-2 1/4)

WAAS CH 56543 W36B	APP CRS 357°	Rwy Idg TDZE Apt Elev	36L 5003 636 643	36R 6502 639 643
--	------------------------	-----------------------------	--	--

RNAV (GPS) RWY 36L

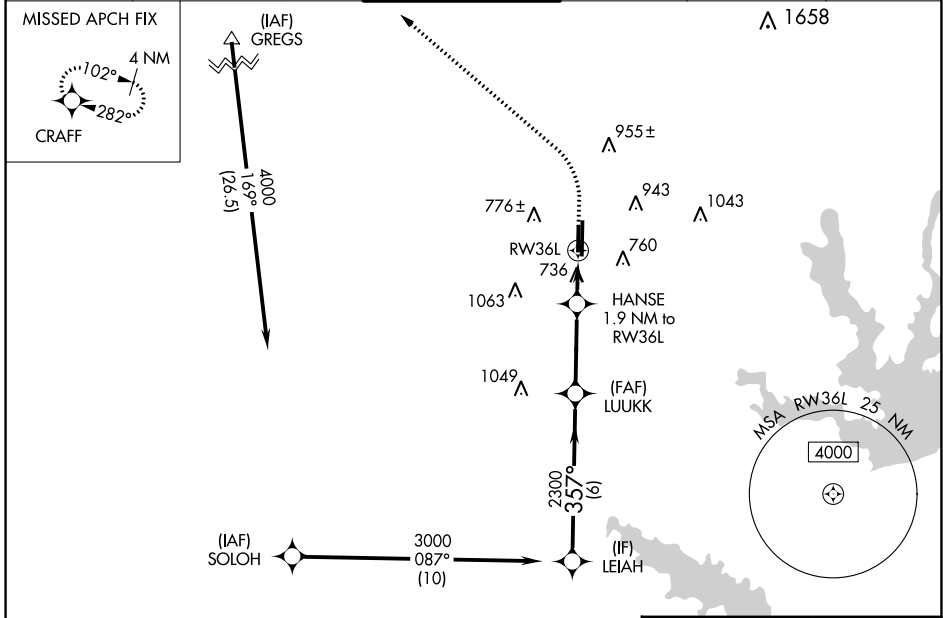
DENTON ENTERPRISE (DTON)

RNP APCH-GPS.

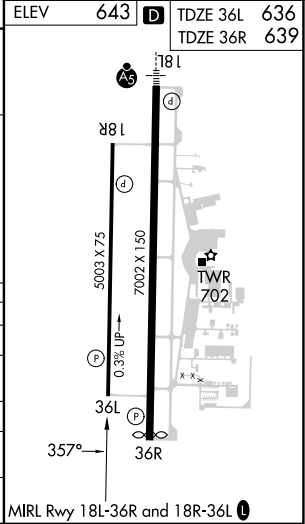
⚠ Rwy 36L helicopter visibility reduction below ¾ SM NA. For uncompensated Baro-VNAV systems, LNAV/VNAV NA below -9°C or above 54°C.

MISSED APPROACH: Climb to 1500 then climbing left turn to 4000 direct CRAFT and hold, continue climb-in-hold to 4000.

ATIS 119.325	REGIONAL APP CON 118.1 306.95	DENTON TOWER ★ 119.95 (CTAF) 0	GND CON 123.95	CLNC DEL 123.95	UNICOM 122.95
------------------------	---	---	--------------------------	---------------------------	-------------------------



LEIAH	3000	LUUKK	2300	HANSE	1280	RWY 36L	736
	3000	2300	2300	1280	1280	736	736
	6 NM	3.2 NM	0.7 NM	1.2 NM			
GP 3.00°	TCH 42						
CATEGORY	A	B	C	D			
LPV DA		886-1	250 (300-1)				
LNAV/VNAV DA		987-1	351 (400-1)				
LNAV MDA		1000-1	364 (400-1)				
SIDESTEP 36R	1040-1¼	401 (400-1¼)	1040-1¾ 401 (400-1¾)	1040-2¼ 401 (400-2¼)			
C CIRCLING	1100-1 457 (500-1)	1260-1 617 (700-1)	1380-2 737 (800-2)	1380-2¼ 737 (800-2¼)			



SC-2, 22 FEB 2024 to 21 MAR 2024

SC-2, 22 FEB 2024 to 21 MAR 2024

DENTON, TEXAS

AL-5866 (FAA)

23278

WAAS CH 87043 W36A	APP CRS 357°	Rwy Idg TDZE Apt Elev	36R 6502 639 643	36L 5003 636 643
--	------------------------	-----------------------------	--	--

RNAV (GPS) RWY 36R

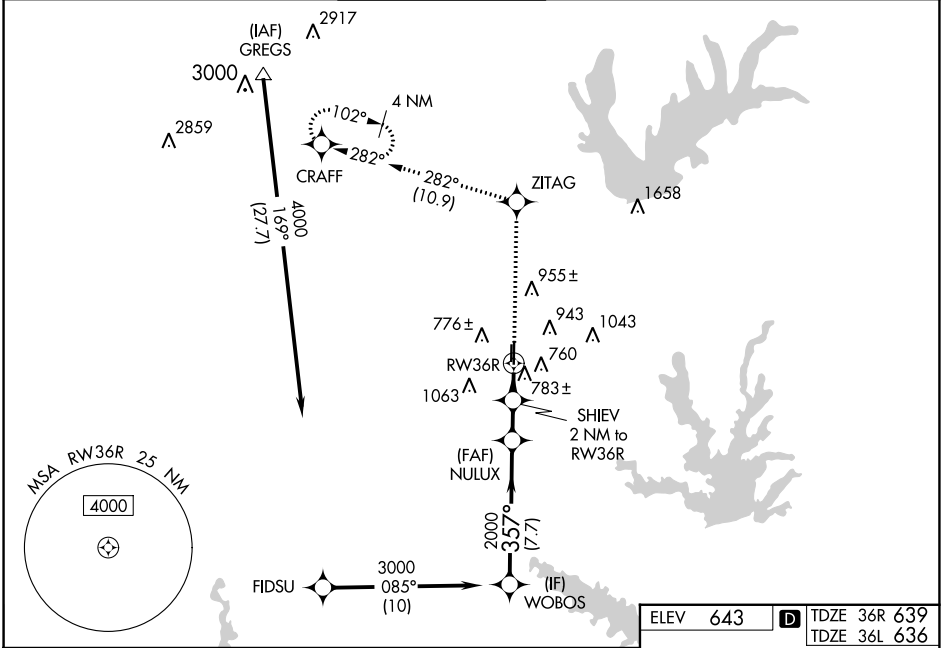
DENTON ENTERPRISE (D'TO)

RNP APCH.

▲
▲ For uncompensated Baro-VNAV systems, LNAV/VNAV NA below -9°C or above 54°C.

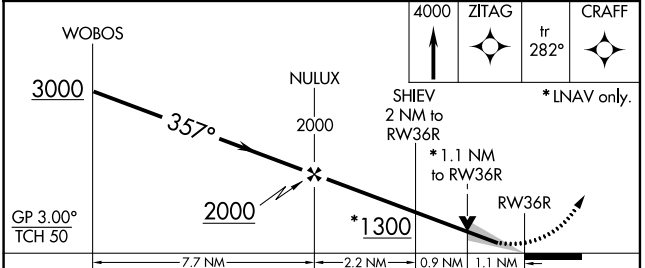
MISSED APPROACH: Climb to 4000 direct ZITAG and on track 282° to CRAFT and hold.

ATIS 119.325	REGIONAL APP CON 118.1 306.95	DENTON TOWER * 119.95 (CTAF) 0	GND CON 123.95	CLNC DEL 123.95	UNICOM 122.95
------------------------	---	---	--------------------------	---------------------------	-------------------------



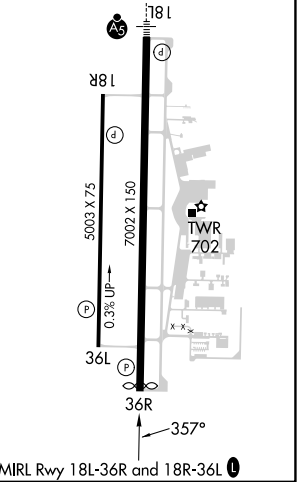
SC-2, 22 FEB 2024 to 21 MAR 2024

SC-2, 22 FEB 2024 to 21 MAR 2024



ELEV 643	D TDZE 36R 639
	TDZE 36L 636

CATEGORY	A	B	C	D
LPV DA		839-3/4	200 (200-3/4)	
LNAV/VNAV DA		964-1	325 (400-1)	
LNAV MDA	1040-1	401 (400-1)	1040-1 1/8	401 (400-1 1/8)
SIDESTEP 36L	1040-1	404 (400-1)	1040-1 1/2 404 (400-1 1/2)	1040-2 404 (400-2)
C CIRCLING	1100-1 457 (500-1)	1260-1 617 (700-1)	1380-2 737 (800-2)	1380-2 1/4 737 (800-2 1/4)



DENTON, TEXAS
Orig 31DEC20

33°12'N-97°12'W

DENTON ENTERPRISE (D'TO)

RNAV (GPS) RWY 36R