

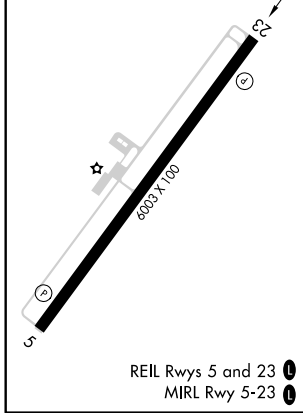
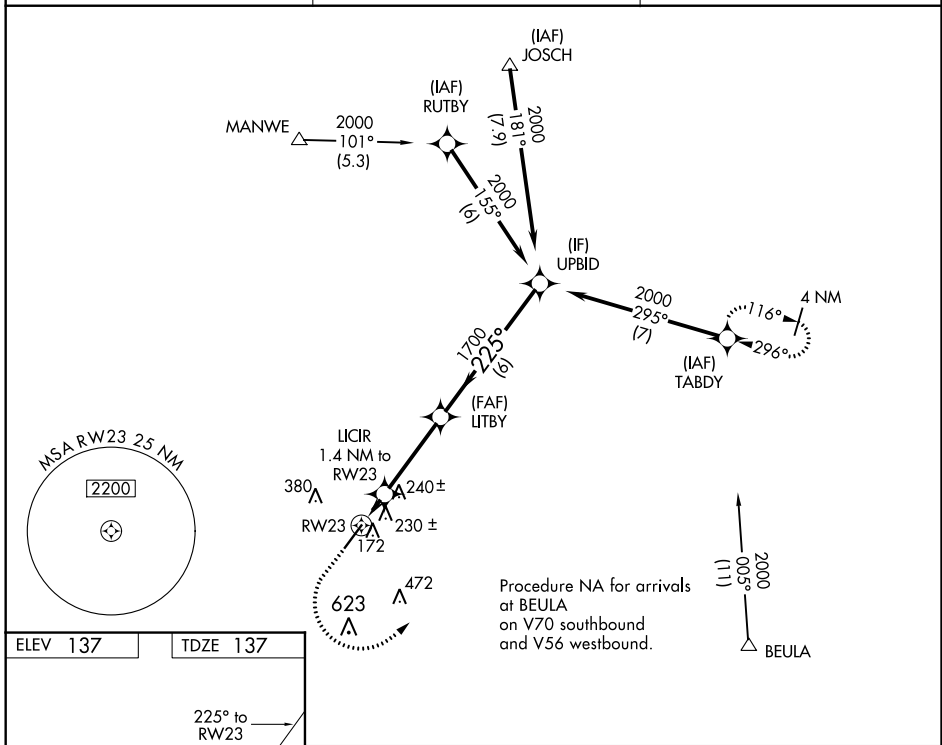
WAAS CH 69521 W23A	APP CRS 225°	Rwy Idg TDZE Apt Elev	6003 137 137
--	------------------------	-----------------------------	---

RNAV (GPS) RWY 23

DUPLIN COUNTY (DPL)

RNP APCH.	MISSED APPROACH: Climb to 1000 then climbing left turn to 2000 direct TABDY and hold.
<p>⚠ For uncompensated Baro-VNAV systems, LNAV/VNAV NA below -15°C or above 54°C.</p>	

AWOS-3 120.675	SEYMOUR JOHNSON APP CON* 119.7 273.6	UNICOM 123.0 (CTAF)
--------------------------	--	-------------------------------



1000	2000	TABDY				
*LNAV only.		LITBY	UPBID			
RW23		LICIR 1.4 NM to RW23	1700	225°	2000	GP 3.00° TCH 43
		*620	1700			
		-1.4 NM	3.4 NM	6 NM		
CATEGORY	A	B	C	D		
LPV DA	DA	337- ³ / ₄		200 (200- ³ / ₄)		
LNAV/VNAV DA	DA	407- ⁷ / ₈		270 (300- ⁷ / ₈)		
LNAV MDA	MDA	480-1		343 (400-1)		

SE-2, 03 DEC 2020 to 31 DEC 2020

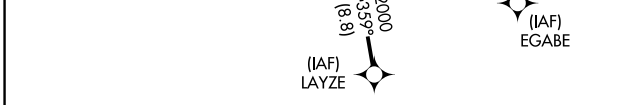
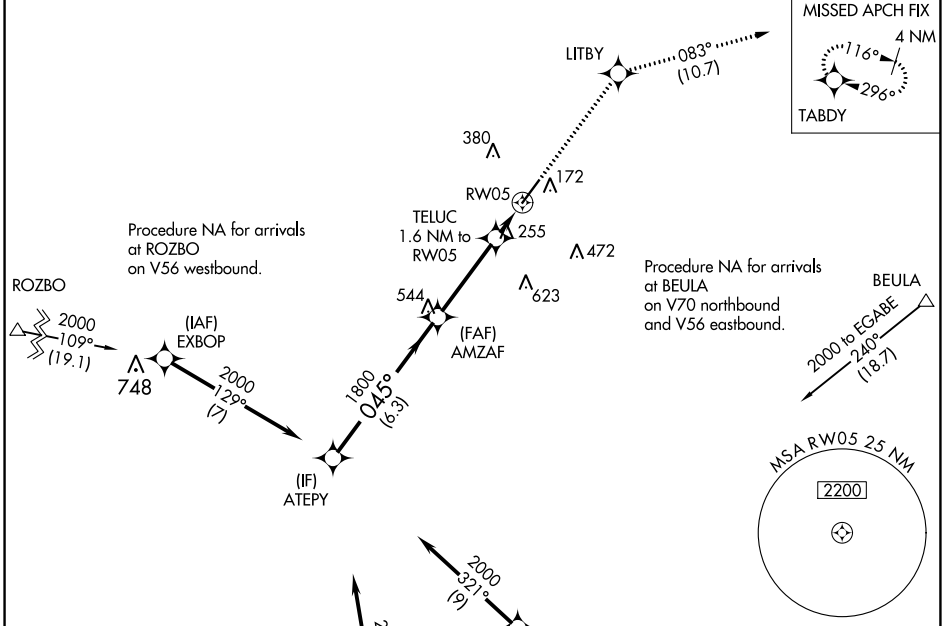
SE-2, 03 DEC 2020 to 31 DEC 2020

WAAS CH 63121 W05A	APP CRS 045°	Rwy Idg TDZE Apt Elev	6003 135 137
--	------------------------	-----------------------------	---

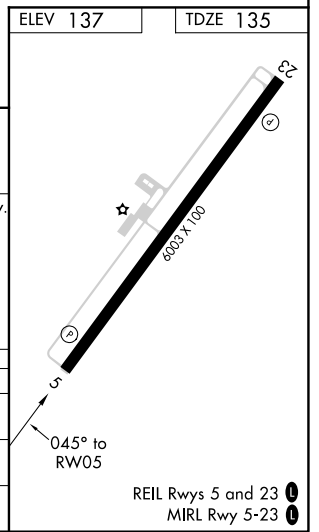
RNAV (GPS) RWY 5

DUPLIN COUNTY (DPL)

RNP APCH.		MISSED APPROACH: Climb to 2000 direct LITBY and on track 083° to TABDY and hold.	
AWOS-3 120.675	SEYMOUR JOHNSON APP CON* 119.7 273.6	UNICOM 123.0 (CTAF) 0	



ELEV 137		TDZE 135	
2000		LITBY	TABDY
*LNAV only.		tr 083°	
ATEPY		AMZAF	RW05
TELUC 1.6 NM to RW05		*680	
CATEGORY		A	B
LPV	DA	385-3/4	250 (300-3/4)
LNNAV/VNAV	DA	396-7/8	261 (300-7/8)
LNNAV	MDA	520-1 385 (400-1)	520-1 1/8 385 (400-1 1/8)



SE-2, 03 DEC 2020 to 31 DEC 2020

SE-2, 03 DEC 2020 to 31 DEC 2020