

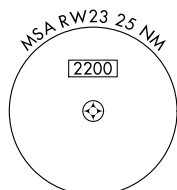
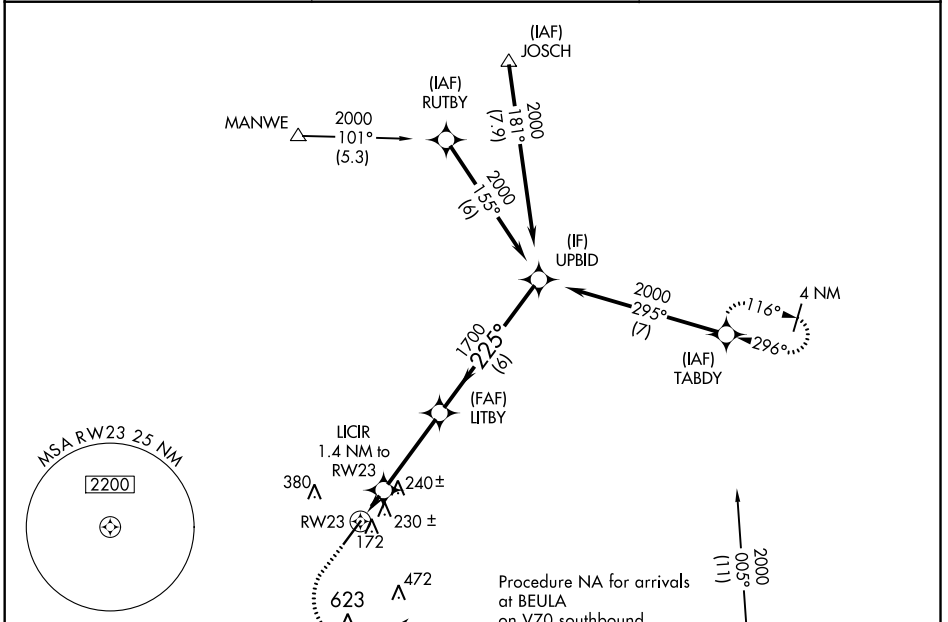
WAAS CH 69521 W23A	APP CRS 225°	Rwy Idg TDZE Apt Elev	6003 137 137
--	------------------------	-----------------------------	---

RNAV (GPS) RWY 23

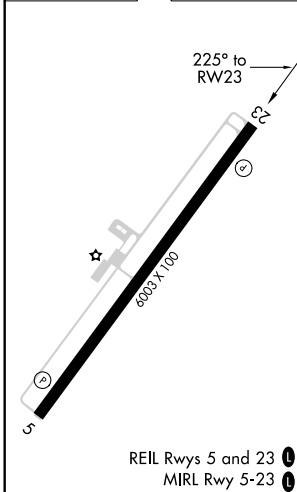
DUPLIN COUNTY (DPL)

RNP APCH.	MISSED APPROACH: Climb to 1000 then climbing left turn to 2000 direct TABDY and hold.
<p>⚠ For uncompensated Baro-VNAV systems, LNAV/VNAV NA below -15°C or above 54°C.</p>	

AWOS-3 120.675	SEYMOUR JOHNSON APP CON★ 119.7 273.6	UNICOM 123.0 (CTAF) ①
--------------------------	--	---------------------------------



ELEV 137	TDZE 137
----------	----------



1000	2000	TABDY				
*LNAV only.		LITBY	UPBID			
RWY23		LICIR 1.4 NM to RWY23	1700	2000	GP 3.00° TCH 43	
*620			1700			
-1.4 NM		3.4 NM	6 NM			
CATEGORY	A	B	C	D		
LPV DA	DA	337- ³ / ₄		200 (200- ³ / ₄)		
LNAV/VNAV DA	DA	407- ⁷ / ₈		270 (300- ⁷ / ₈)		
LNAV MDA	MDA	480-1		343 (400-1)		

SE-2, 03 DEC 2020 to 31 DEC 2020

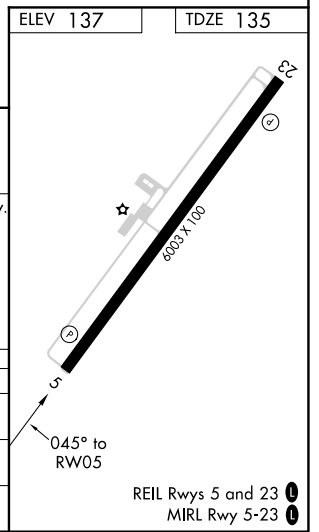
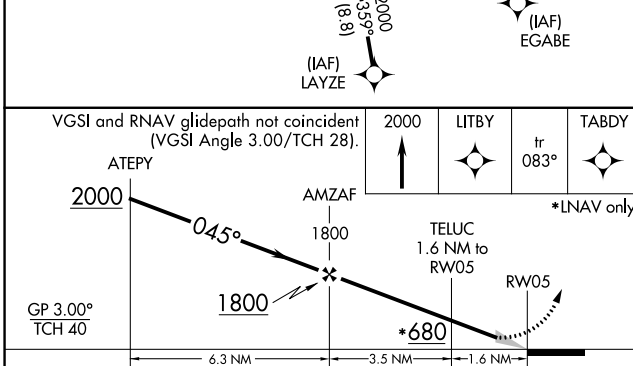
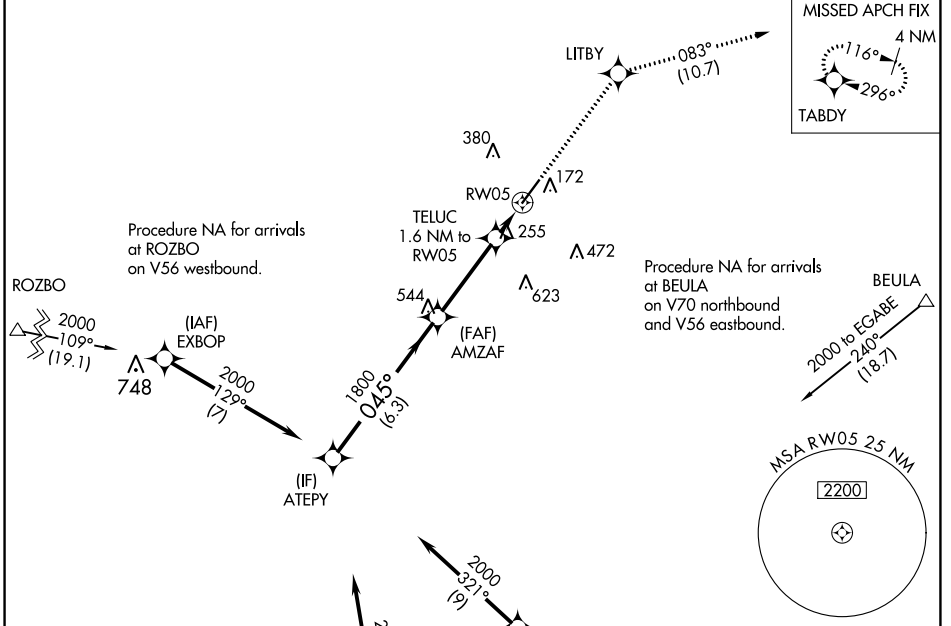
SE-2, 03 DEC 2020 to 31 DEC 2020

WAAS CH 63121 W05A	APP CRS 045°	Rwy Idg TDZE Apt Elev	6003 135 137
--	------------------------	-----------------------------	---

RNAV (GPS) RWY 5

DUPLIN COUNTY (DPL)

RNP APCH.		MISSED APPROACH: Climb to 2000 direct LITBY and on track 083° to TABDY and hold.	
AWOS-3 120.675	SEYMOUR JOHNSON APP CON* 119.7 273.6	UNICOM 123.0 (CTAF) 0	



SE-2, 03 DEC 2020 to 31 DEC 2020

SE-2, 03 DEC 2020 to 31 DEC 2020

INSTRUMENT APPROACH PROCEDURE CHARTS

A IFR ALTERNATE AIRPORT MINIMUMS

Standard alternate minimums for non-precision approaches and approaches with vertical guidance [NDB, VOR, LOC, TACAN, LDA, SDF, VOR/DME, ASR, RNAV (GPS) or RNAV (RNP)] are 800-2. Standard alternate minimums for precision approaches (ILS, PAR, or GLS) are 600-2. Airports within this geographical area that require alternate minimums other than standard or alternate minimums with restrictions are listed below. NA - means alternate minimums are not authorized due to unmonitored facility, absence of weather reporting service, or lack of adequate navigation coverage. Civil pilots see FAR 91. IFR Alternate Minimums: Ceiling and Visibility Minimums not applicable to USA/USN/USAF. Pilots must review the IFR Alternate Minimums Notes for alternate airfield suitability.

NAME ALTERNATE MINIMUMS

AHOSKIE, NC

TRI-COUNTY AT HENRY JOYNER
FIELD (ASJ).....RNAV (GPS) Rwy 1
RNAV (GPS) Rwy 19

NA when local weather not available.
Category D, 800-2½.

ALBEMARLE, NC

STANLY
COUNTY (VUJ).....ILS or LOC Rwy 22L¹²
NDB Rwy 22L¹
RNAV (GPS) Rwy 4R
RNAV (GPS) Rwy 22L

NA when local weather not available.
¹NA when control tower closed.
²ILS, Categories A, B, C, D, 700-2.

ALLENDALE, SC

ALLENDALE
COUNTY (AQX).....RNAV (GPS) Rwy 17
RNAV (GPS) Rwy 35
VOR-A

NA when local weather not available.

ANDERSON, SC

ANDERSON
RGNL (AND).....ILS or LOC Rwy 5¹
RNAV (GPS) Rwy 5¹
RNAV (GPS) Rwy 17¹²
RNAV (GPS) Rwy 23²
RNAV (GPS) Rwy 35¹²
VOR Rwy 5¹

¹NA when local weather not available.
²Category D, 800-2¼.

ASHEBORO, NC

ASHEBORO
RGNL (HBI).....RNAV (GPS) Rwy 3
RNAV (GPS) Rwy 21

Categories C, D, 1100-3.

NAME ALTERNATE MINIMUMS

ASHEVILLE, NC

ASHEVILLE
RGNL (AVL).....ILS or LOC Rwy 35¹²
LOC Rwy 17¹³
RNAV (GPS) Rwy 17³
RNAV (GPS) Rwy 35³

¹NA when control tower closed.
²LOC, Categories A, B, 1000-2;
Category C, 1300-3; Category D, 1600-3.
³Category C, 1300-3; Category D, 1600-3.

BEAUFORT, NC

MICHAEL J.
SMITH FIELD (MRH).....RNAV (GPS) Rwy 3
RNAV (GPS) Rwy 8
RNAV (GPS) Rwy 14
RNAV (GPS) Rwy 21
RNAV (GPS) Rwy 26
RNAV (GPS) Rwy 32

NA when local weather not available.

BEAUFORT, SC

BEAUFORT
EXECUTIVE (ARW).....RNAV (GPS) Rwy 7
RNAV (GPS) Rwy 25

NA when local weather not available.

BENNETTSVILLE, SC

MARLBORO COUNTY JETPORT-H E AVENT
FIELD (BBP).....RNAV (GPS) Rwy 7
RNAV (GPS) Rwy 25

NA when local weather not available.

BURLINGTON, NC

BURLINGTON-ALAMANCE
RGNL (BUY).....RNAV (GPS) Rwy 6¹
RNAV (GPS) Rwy 24¹
VOR/DME-A

NA when local weather not available.
¹Category C, 1000-2¾, Category D, 1000-3.

03 DEC 2020 to 31 DEC 2020

03 DEC 2020 to 31 DEC 2020

NAME ALTERNATE MINIMUMS

ELIZABETH CITY, NC

ELIZABETH CITY CG AIR STATION/
RGNL (ECG).....**ILS or LOC Rwy 10¹²**
VOR/DME Rwy 10¹
VOR/DME Rwy 19¹
VOR/DME Rwy 28³

¹NA when local weather not available.
²NA when control tower closed.
³NA when local altimeter not available.

ELIZABETH TOWN, NC

CARL L BROWN JR
FIELD (EYF).....**RNAV (GPS) Rwy 15**
RNAV (GPS) Rwy 33
VOR/DME Rwy 15

NA when local weather not available.

ENGELHARD, NC

HYDE COUNTY (7W6).....**RNAV (GPS) Rwy 11**
NA when local weather not available.

ERWIN, NC

HARNETT RGNL
JETPORT (HRJ).....**LOC Rwy 5**
RNAV (GPS) Rwy 5
RNAV (GPS) Rwy 23

NA when local weather not available.

FAYETTEVILLE, NC

FAYETTEVILLE RGNL/GRANNIS
FIELD (FAY).....**ILS or LOC Rwy 4¹**
LOC BC Rwy 22²
RNAV (GPS) Rwy 4²
RNAV (GPS) Rwy 22²
RNAV (GPS) Rwy 28²
VOR Rwy 22²

¹ILS, Category C, 700-2; Category D, 700-2¹/₄;
LOC, Category D, 800-2¹/₄.
²Category D, 800-2¹/₄.

FLORENCE, SC

FLORENCE
RGNL (FLO).....**ILS or LOC Rwy 9¹²**
RNAV (GPS) Rwy 1
RNAV (GPS) Rwy 9
RNAV (GPS) Rwy 19
RNAV (GPS) Rwy 27
VOR or TACAN-A

NA when local weather not available.
¹ILS, Categories A, B, C, 700-2; Category D,
700-2¹/₄. LOC, Category D, 800-2¹/₄.
²NA when control tower closed.

FRANKLIN, NC

MACON COUNTY (1A5).....**RNAV (GPS)-A**
NA when local weather not available.
Categories A, B, 1600-2; Category C, 1800-3.

NAME ALTERNATE MINIMUMS

GASTONIA, NC

GASTONIA
MUNI (AKH).....**NDB Rwy 3¹**
RNAV (GPS) Rwy 21²

¹Category C, 800-2¹/₄.
²NA when local weather not available.

GEORGETOWN, SC

GEORGETOWN
COUNTY (GGE).....**RNAV (GPS) Rwy 5**
RNAV (GPS) Rwy 23

NA when local weather not available.
Category D, 800-2¹/₄.

GOLDSBORO, NC

WAYNE EXECUTIVE
JETPORT (GWW).....**ILS or LOC Rwy 23**
RNAV (GPS) Rwy 5
RNAV (GPS) Rwy 23
VOR-A

NA when local weather not available.

GREENSBORO, NC

PIEDMONT TRIAD
INTL (GSO).....**ILS or LOC Rwy 5L¹**
ILS or LOC Rwy 5R¹
ILS or LOC Rwy 23L¹²
ILS or LOC Rwy 23R¹²
ILS Y or LOC/DME Y Rwy 32²³
ILS Z or LOC/DME Z Rwy 32²³
RNAV (GPS) Rwy 5L²⁴
RNAV (GPS) Rwy 5R²⁴
RNAV (GPS) Rwy 14²⁴
RNAV (GPS) Rwy 23L²⁴
RNAV (GPS) Rwy 23R²⁴
RNAV (GPS) Rwy 32²⁴
VOR/DME Rwy 23L²⁴

¹LOC, Category C, 800-2¹/₄; Category D, 800-2¹/₄.
²NA when local weather not available.
³ILS, LOC, Category C, 800-2¹/₄;
Category D, 800-2¹/₄.
⁴Category C, 800-2¹/₄; Category D, 800-2¹/₄.

GREENVILLE, NC

PITT-
GREENVILLE (PGV).....**ILS Y or LOC Y Rwy 20¹**
ILS Z or LOC Z Rwy 20¹
RNAV (GPS) Rwy 2²
RNAV (GPS) Rwy 8
RNAV (GPS) Rwy 20²
RNAV (GPS) Rwy 26

NA when local weather not available.
¹ILS Category C, 700-2; Category D, 800-2¹/₄.
LOC, Category D, 800-2¹/₄.
²Category D, 800-2¹/₄.

03 DEC 2020 to 31 DEC 2020

03 DEC 2020 to 31 DEC 2020

NAME ALTERNATE MINIMUMS

GREENVILLE, SC

DONALDSON
FIELD (GYH).....**ILS or LOC Rwy 5**
NA when local weather not available.
NA when control tower closed.

GREENVILLE

DOWNTOWN (GMU).....**ILS Y or LOC Y Rwy 1¹²**
ILS Z or LOC Z Rwy 1¹²³
RNAV (GPS) Rwy 1³⁴
RNAV (GPS) Rwy 10³⁵
RNAV (GPS) Rwy 19³⁵
RNAV (GPS) Rwy 28³⁵

¹NA when tower closed.
²LOC, Category D, 900-2¼.
³NA when local weather not available.
⁴Category C, 900-2¼.
⁵Category D, 900-2¼.

GREENWOOD, SC

GREENWOOD
COUNTY (GRD).....**RNAV (GPS) Rwy 9**
RNAV (GPS) Rwy 27
VOR Rwy 9

NA when local weather not available.
Category D, 800-2¼.

GREER, SC

GREENVILLE SPARTANBURG
INTL (GSP).....**ILS or LOC Rwy 4¹²**
ILS or LOC Rwy 22¹²
RNAV (GPS) Rwy 4³
RNAV (GPS) Rwy 22³

NA when local weather not available.
¹NA when control tower closed.
²LOC, Category D 800-2¼.
³Category D 800-2¼.

HICKORY, NC

HICKORY
RGNL (HKY).....**ILS or LOC Rwy 24¹**
RNAV (GPS) Rwy 1
RNAV (GPS) Rwy 6
RNAV (GPS) Rwy 19
RNAV (GPS) Rwy 24

NA when local weather not available.
¹NA when control tower closed.

HILTON HEAD ISLAND, SC

HILTON HEAD (HXD).....**RNAV (GPS) Rwy 3**
NA when local weather not available.

JACKSONVILLE, NC

ALBERT J ELLIS (OAJ).....**ILS or LOC Rwy 5**
RNAV (GPS) Rwy 5
RNAV (GPS) Rwy 23
NA when local weather not available.

NAME ALTERNATE MINIMUMS

JEFFERSON, NC

ASHE COUNTY (GEV).....**RNAV (GPS) Rwy 28**
NA when local weather not available.
Categories A, B, 1100-2; Categories C, D, 2000-3.

KENANSVILLE, NC

DUPLIN CO (DPL).....**RNAV (GPS) Rwy 5**
RNAV (GPS) Rwy 23
Category D, 900-2¼.

KINGSTREE, SC

WILLIAMSBURG
RGNL (CKI).....**RNAV (GPS) Rwy 14**
RNAV (GPS) Rwy 32
NA when local weather not available.
Category C, 900-2¼; Category D, 900-3.

KINSTON, NC

KINSTON RGNL JETPORT AT
STALLINGS FIELD (ISO).....**ILS or LOC Rwy 5¹²**
RNAV (GPS) Rwy 5
RNAV (GPS) Rwy 23

NA when local weather not available.
¹NA when control tower closed.
²Categories C, D, 700-2.

LANCASTER, SC

LANCASTER COUNTY-MC WHIRTER
FIELD (LKR).....**RNAV (GPS) Rwy 6**
RNAV (GPS) Rwy 24
NA when local weather not available.

LEXINGTON, NC

DAVIDSON
COUNTY (EXX).....**RNAV (GPS) Rwy 6**
RNAV (GPS) Rwy 24
NA when local weather not available.

LINCOLNTON, NC

LINCOLNTON-LINCOLN COUNTY
RGNL (IPJ).....**ILS Y or LOC Y Rwy 23¹²³**
ILS Z or LOC Z Rwy 23¹²
RNAV (GPS) Rwy 5¹⁴
RNAV (GPS) Rwy 23⁴

¹NA when local weather not available.
²ILS, LOC, Category C, 800-2¼; Category D, 800-2¼.
³NA when FBO closed.
⁴Category C, 800-2¼; Category D, 800-2¼.

LOUISBURG, NC

TRIANGLE NORTH
EXECUTIVE (LHZ).....**RNAV (GPS) Rwy 5**
RNAV (GPS) Rwy 23
VOR-A¹
NA when local weather not available.
¹Category D 800-2¼.

03 DEC 2020 to 31 DEC 2020

03 DEC 2020 to 31 DEC 2020

NAME ALTERNATE MINIMUMS

LUMBERTON, NC

LUBERTON RGNL (LBT).....**ILS or LOC Rwy 5**
RNAV (GPS) Rwy 5
RNAV (GPS) Rwy 13
RNAV (GPS) Rwy 23

NA when local weather not available.

MANNING, SC

SANTEE COOPER
RGNL (MNI).....**NDB or GPS Rwy 2**
VOR/DME or GPS-A

NA when local weather not available.

MANTEO, NC

DARE COUNTY
RGNL (MQI).....**RNAV (GPS) Rwy 5**
RNAV (GPS) Rwy 17
RNAV (GPS) Rwy 23

NA when local weather not available.

MARION, SC

MARION
COUNTY (MAO).....**RNAV (GPS) Rwy 4**
RNAV (GPS) Rwy 22
VOR/DME-A

NA when local weather not available.
Category D, 900-2½.

MAXTON, NC

LAURINBURG-
MAXTON (MEB).....**ILS or LOC Rwy 5¹**
RNAV (GPS) Rwy 5²
RNAV (GPS) Rwy 23²

¹LOC, Category D, 900-2½.
²Category D, 900-2½.

MONROE, NC

CHARLOTTE-MONROE
EXECUTIVE (EQY).....**RNAV (GPS) Rwy 5**
RNAV (GPS) Rwy 23

Category D, 800-2½.

MORGANTON, NC

FOOTHILLS RGNL (MRN).....**LOC Rwy 3**
RNAV (GPS) Rwy 3
RNAV (GPS) Rwy 21

NA when local weather not available.

MOUNT AIRY, NC

MOUNT AIRY/SURRY
COUNTY (MWK).....**RNAV (GPS) Rwy 18¹**
RNAV (GPS) Rwy 36

Category C, 1000-2¾; Category D, 1100-3.
¹NA when local weather not available.

MOUNT PLEASANT, SC

MT PLEASANT RGNL-
FAISON FIELD (LRO).....**RNAV (GPS) Rwy 17**
RNAV (GPS) Rwy 35
VOR/DME-A

NA when local weather not available.

NAME ALTERNATE MINIMUMS

MYRTLE BEACH, SC

MYRTLE BEACH
INTL (MYR).....**ILS or LOC Rwy 18¹**
ILS or LOC Rwy 36²
RNAV (GPS) Rwy 18³
RNAV (GPS) Rwy 36³
RNAV (GPS)-A³
VOR/DME-A⁴

¹LOC, Category D, 800-2¼, Category E, 800-2½.
²ILS, Category C, 800-2; Category D, 800-2¼;
Category E, 800-2½. LOC, Category D, 800-2¼,
Category E, 800-2½.
³Category D, 800-2¼; Category E, 800-2½.
⁴Category D, 800-2¼.

NEW BERN, NC

COASTAL CAROLINA
RGNL (EWN).....**ILS or LOC Rwy 4¹²**
RNAV (GPS) Rwy 4¹³
RNAV (GPS) Rwy 22³
VOR Rwy 22²

¹NA when local weather not available.
²LOC, Category D, 900-2¾.
³Category D, 900-2¾.

NEWBERRY, SC

NEWBERRY COUNTY (EOE).....**NDB Rwy 22**
RNAV (GPS) Rwy 4
RNAV (GPS) Rwy 22

NA when local weather not available.

NORTH MYRTLE BEACH, SC

GRAND STRAND
(CRE).....**ILS or LOC Rwy 23¹**
RNAV (GPS) Rwy 5²
RNAV (GPS) Rwy 23²²
VOR Rwy 5²
VOR Rwy 23²²

NA when local weather not available.
¹ILS, Category D, 700-2¼. LOC, Category D,
800-2¼.
²Category D, 800-2¼.

NORTH WILKESBORO, NC

WILKES
COUNTY (UKF).....**ILS Y or LOC Y Rwy 1¹**
ILS Z or LOC Z Rwy 1¹
RNAV (GPS) Rwy 1²
RNAV (GPS) Rwy 19²

NA when local weather not available.
¹LOC, Category D, 1000-3.
²Category D, 1000-3.

OAK ISLAND, NC

CAPE FEAR RGNL JETPORT/HOWIE
FRANKLIN FIELD (SUT).....**RNAV (GPS) Rwy 5**
RNAV (GPS) Rwy 23

NA when local weather not available.

03 DEC 2020 to 31 DEC 2020

03 DEC 2020 to 31 DEC 2020

NAME ALTERNATE MINIMUMS

ORANGEBURG, SC

ORANGEBURG
MUNI (OGB).....RNAV (GPS) Rwy 5¹
RNAV (GPS) Rwy 17²
RNAV (GPS) Rwy 23¹
RNAV (GPS) Rwy 35¹

NA when local weather not available.

¹Category D, 800-2¼.

²Category D, 800-2½.

OXFORD, NC

HENDERSON-OXFORD (HNZ).....LOC Rwy 6
RNAV (GPS) Rwy 6
RNAV (GPS) Rwy 24

NA when local weather not available.

Category D, 800-2½.

PINEHURST/SOUTHERN PINES, NC

MOORE
COUNTY (SOP).....ILS Y or LOC Y Rwy 5¹
ILS Z or LOC Z Rwy 5¹
RNAV (GPS) Rwy 5²³
RNAV (GPS) Rwy 23²³

¹LOC, Category D, 1000-3.

²Category D, 1000-3.

³NA when local weather not available.

RALEIGH/DURHAM, NC

RALEIGH-DURHAM
INTL (RDU).....ILS or LOC Rwy 5L¹
ILS or LOC Rwy 5R¹
ILS or LOC Rwy 23L¹
ILS or LOC Rwy 23R²
RNAV (GPS) Y Rwy 5L³
RNAV (GPS) Y Rwy 5R³
RNAV (GPS) Y Rwy 23L³
RNAV (GPS) Y Rwy 23R³
VOR Rwy 5R³
VOR Rwy 23L³

¹LOC, Category D, 800-2½.

²LOC, Category C, 800-2¼; Category D, 800-2½.

³Category D, 800-2½.

REIDSVILLE, NC

ROCKINGHAM COUNTY NC
SHILOH (SIF).....NDB Rwy 31
RNAV (GPS) Rwy 13
RNAV (GPS) Rwy 31

NA when local weather not available.

ROANOKE RAPIDS, NC

HALIFAX-NORTHAMPTON
RGNL (IXA).....RNAV (GPS) Rwy 2
RNAV (GPS) Rwy 20
VOR Rwy 2

Category D, 800-2¼.

NAME ALTERNATE MINIMUMS

ROCK HILL, SC

ROCK HILL/YORK CO/
BRYANT FIELD (UZA).....RNAV (GPS) Rwy 2¹
RNAV (GPS) Rwy 20

NA when local weather not available.

¹Category D, 800-2¼.

ROCKINGHAM, NC

RICHMOND
COUNTY (RCZ).....RNAV (GPS) Rwy 32

NA when local weather not available.

ROCKY MOUNT, NC

ROCKY MOUNT-WILSON
RGNL (RWI).....RNAV (GPS) Rwy 4
RNAV (GPS) Rwy 22
VOR/DME Rwy 22

NA when local weather not available.

ROXBORO, NC

RALEIGH RGNL AT PERSON
COUNTY (TDF).....RNAV (GPS) Rwy 6
RNAV (GPS) Rwy 24

NA when local weather not available.

RUTHERFORDTON, NC

RUTHERFORD CO/MARCHMAN
FIELD (FQD).....RNAV (GPS) Rwy 1

NA when local weather not available.

Category D, 800-2½.

SALISBURY, NC

MID-CAROLINA
RGNL (RUQ).....RNAV (GPS) Rwy 20

NA when local weather not available.

SANFORD, NC

RALEIGH EXECUTIVE JETPORT AT SANFORD
-LEE COUNTY (TTA).....RNAV (GPS) Rwy 3
RNAV (GPS) Rwy 21

NA when local weather not available.

Category D, 800-2¼.

SHELBY, NC

SHELBY-CLEVELAND
COUNTY RGNL (EHO).....NDB Rwy 23¹
RNAV (GPS) Rwy 5
RNAV (GPS) Rwy 23

NA when local weather not available.

¹Category C, 800-2¼; Category D, 800-2½.

SILER CITY, NC

SILER CITY
MUNI (SCR).....RNAV (GPS) Rwy 4
RNAV (GPS) Rwy 22

NA when local weather not available.

03 DEC 2020 to 31 DEC 2020

03 DEC 2020 to 31 DEC 2020

NAME ALTERNATE MINIMUMS

SMITHFIELD, NC

JOHNSTON
RGNL (JNX).....RNAV (GPS) Rwy 3
RNAV (GPS) Rwy 21

NA when local weather not available.
Category C, 800-2¼; Category D, 1000-3.

SPARTANBURG, SC

SPARTANBURG DOWNTOWN MEMORIAL/
SIMPSON FIELD(SPA).....ILS or LOC Rwy 5
RNAV (GPS) Rwy 5

NA when local weather not available.

STATESVILLE, NC

STATESVILLE
RGNL (SVH).....ILS Y or LOC Y Rwy 28¹
ILS Z or LOC Z Rwy 28¹
RNAV (GPS) Rwy 10
RNAV (GPS) Rwy 28

NA when local weather not available.
¹NA when FBO closed.

SUMMERVILLE, SC

SUMMERVILLE (DYB).....RNAV (GPS) Rwy 6¹
RNAV (GPS) Rwy 24¹²

¹Categories A, B, 900-2; Category C, 900-2¼.
²NA when local weather not available.

SUMTER, SC

SUMTER (SMS).....ILS or LOC Rwy 23¹
NDB Rwy 23²
RNAV (GPS) Rwy 5²
RNAV (GPS) Rwy 23²

NA when local weather not available.
¹LOC, Category C, 900-2½; Category D, 900-2¼.
²Category C, 900-2½; Category D, 900-2¼.

SYLVA, NC

JACKSON
COUNTY (24A).....RNAV (GPS) Rwy 33
NA when local weather not available.
Category A, 1600-2; Category B, 1700-2.

WADESBORO, NC

ANSON COUNTY-JEFF CLOUD
FIELD (AFP).....ILS or LOC Rwy 34¹
RNAV (GPS) Rwy 16²
RNAV (GPS) Rwy 34²

NA when local weather not available.
¹ILS, Category C, 700-1¾; Category D,
700-2¼. LOC, Category D, 800-2¼.
²Category D, 800-2¼.

WALTERBORO, SC

LOWCOUNTRY
RGNL (RBW).....RNAV (GPS) Rwy 5
RNAV (GPS) Rwy 17
RNAV (GPS) Rwy 23
RNAV (GPS) Rwy 35

NA when local weather not available.

NAME ALTERNATE MINIMUMS

WASHINGTON, NC

WASHINGTON-
WARREN (OCW).....RNAV (GPS) Rwy 5
RNAV (GPS) Rwy 23
RNAV (GPS) Rwy 35

NA when local weather not available.

WHITEVILLE, NC

COLUMBUS COUNTY
MUNI (CPC).....NDB Rwy 6
RNAV (GPS) Rwy 6
RNAV (GPS) Rwy 24

NA when local weather not available.
Category D, 800-2¼.

WILMINGTON, NC

WILMINGTON
INTL (ILM).....ILS Y or LOC Rwy 6¹
ILS Y or LOC Rwy 24¹
ILS Y or LOC Rwy 35²
RADAR-1³⁴
RNAV (GPS) Rwy 6³
RNAV (GPS) Rwy 17³
RNAV (GPS) Rwy 24³
RNAV (GPS) Rwy 35³
TACAN-A³

¹ILS, Category C, 700-2; Category D, 900-3; LOC,
Category D, 900-3.
²LOC, Category D, 900-3.
³Category D, 900-3.
⁴NA when control tower closed.

WINNSBORO, SC

FAIRFIELD
COUNTY (FDW).....RNAV (GPS) Rwy 4
RNAV (GPS) Rwy 22

Category D, 800-2¼.

WINSTON-SALEM, NC

SMITH
REYNOLDS (INT).....ILS or LOC Rwy 33¹²
RNAV (GPS) Rwy 15³
RNAV (GPS) Rwy 33³⁴

¹NA when control tower closed.
²ILS, Categories B, C, 700-2; Category D,
800-2½. LOC, Category D, 800-2½.
³Category D, 800-2½.
⁴NA when local weather not available.

03 DEC 2020 to 31 DEC 2020

03 DEC 2020 to 31 DEC 2020