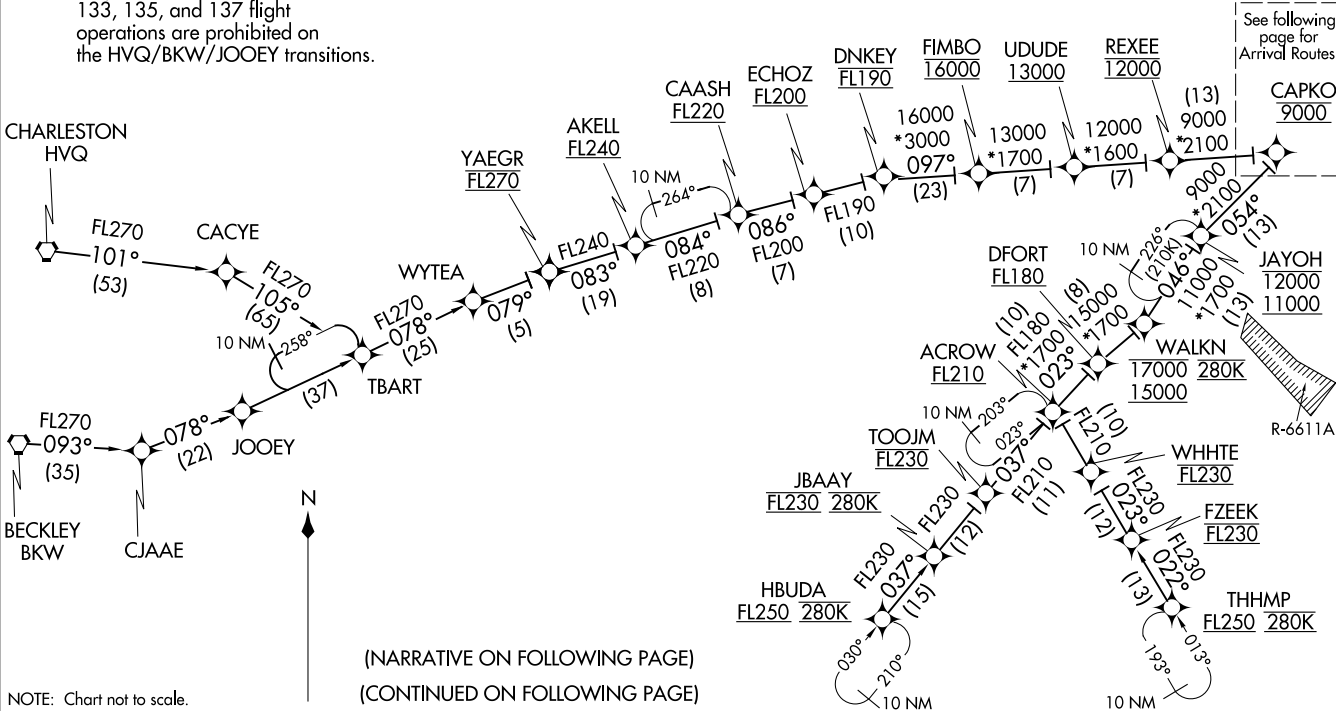


RAVNN SIX ARRIVAL (RNAV) Transition Routes
(CAPKO.RAVNN6) 100DEC15

POTOMAC APP CON
128.35 270.275
BWI D-ATIS
115.1 127.8

- NOTE: RADAR required.
- NOTE: RNAV 1.
- NOTE: DME/DME/IRU or GPS required.
- NOTE: Turbojet aircraft only.
- NOTE: All part 91, 101, 103, 105, 125, 133, 135, and 137 flight operations are prohibited on the HVQ/BKW/JOOEY transitions.

BECKLEY TRANSITION (BKW.RAVNN6)
 CHARLESTON TRANSITION (HVQ.RAVNN6)
 HBUDA TRANSITION (HBUDA.RAVNN6): (ATC assigned only).
 JOOEY TRANSITION (JOOEY.RAVNN6): (ATC assigned only).
 THHMP TRANSITION (THHMP.RAVNN6)



NOTE: Chart not to scale.

RAVNN SIX ARRIVAL (RNAV) Transition Routes
(CAPKO.RAVNN6) 201798
BALTIMORE, MARYLAND

RAVNN SIX ARRIVAL (RNAV) Arrival Routes

POTOMAC APP CON
128.35 270.275
BWI D-ATIS
115.1 127.8

HUNNN

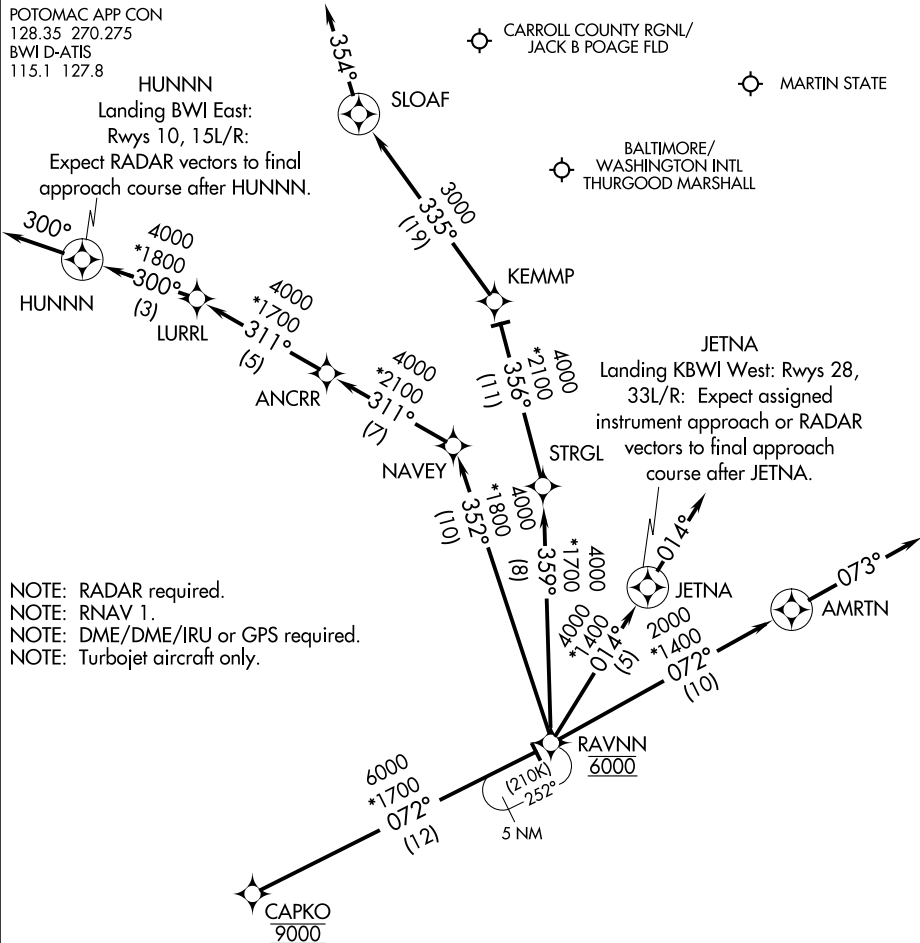
Landing BWI East:
Rwys 10, 15L/R:

Expect RADAR vectors to final approach course after HUNNN.

CARROLL COUNTY RGNL/
JACK B POAGE FLD

MARTIN STATE

BALTIMORE/
WASHINGTON INTL
THURGOOD MARSHALL



- NOTE: RADAR required.
- NOTE: RNAV 1.
- NOTE: DME/DME/IRU or GPS required.
- NOTE: Turbojet aircraft only.

NOTE: Chart not to scale.

ARRIVAL ROUTE DESCRIPTION

From CAPKO on track 072° to cross RAVNN at 6000.

LANDING BWI RUNWAYS 10, 15L/R: From RAVNN on track 352° to NAVFY, then on track 311° to ANCRR, then on track 311° to LURRL, then on track 300° to HUNNN, then on track 300°. Expect RADAR vectors to final approach course.

LANDING BWI RUNWAYS 28, 33L/R: From RAVNN on track 014° to JETNA, then on track 014°. Expect assigned instrument approach or RADAR vectors to final approach course.

LANDING DMW: From CAPKO on track 072° to cross RAVNN at 6000, then on track 359° to STRGL, then on track 356° to KEMMP, then on track 335° to SLOAF, then on heading 354°. Expect RADAR vectors to final approach course.

LANDING MTN: From CAPKO on track 072° to cross RAVNN at 6000, then on track 072° to AMRTN, then on track 073°. Expect RADAR vectors to final approach course.

NE-3, 22 FEB 2024 to 21 MAR 2024

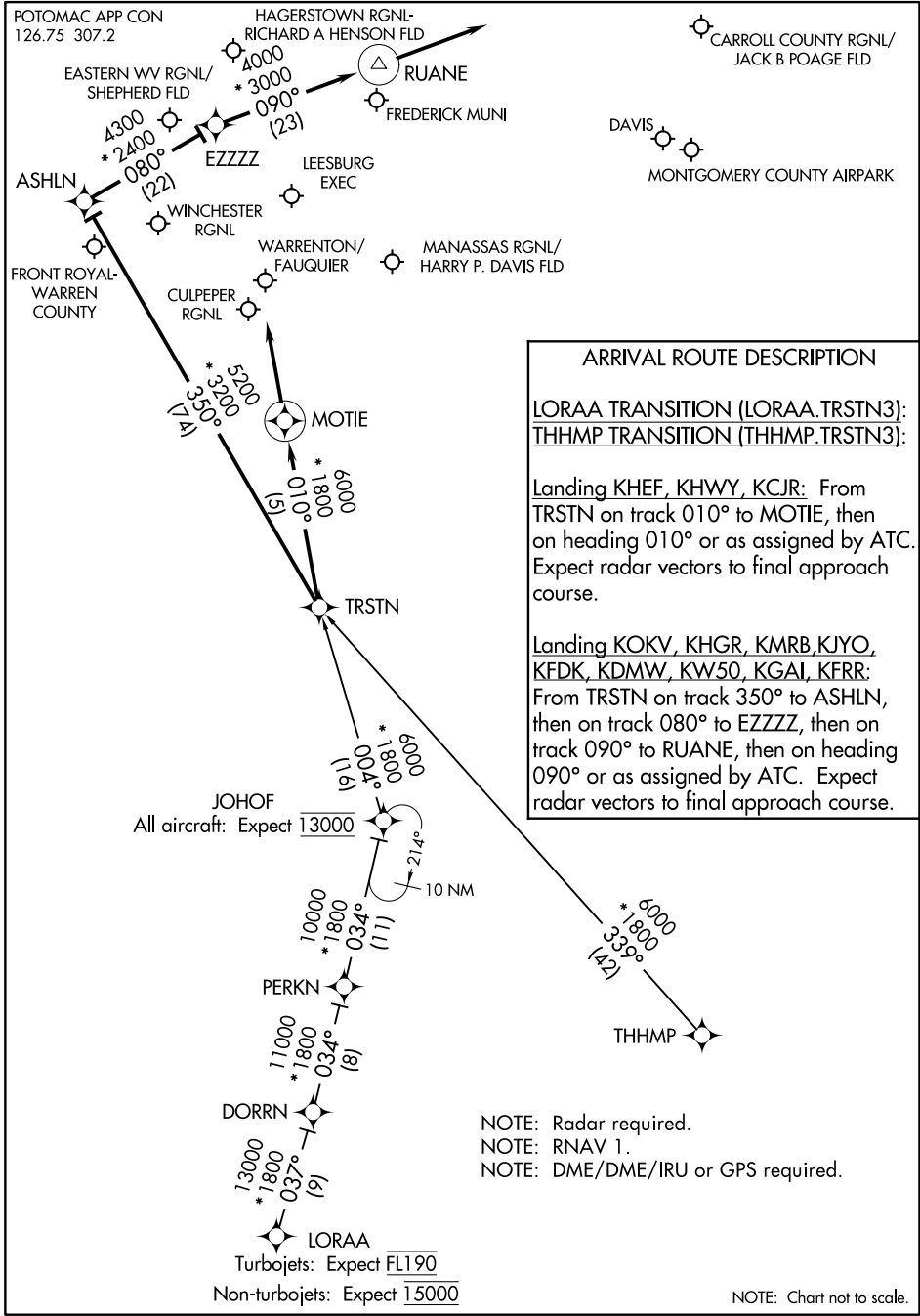
NE-3, 22 FEB 2024 to 21 MAR 2024

(TRSTN.TRSTN3) 22027

TRSTN THREE ARRIVAL (RNAV)

AL-5326

WASHINGTON, D.C.



NE-3, 22 FEB 2024 to 21 MAR 2024

NE-3, 22 FEB 2024 to 21 MAR 2024

TRSTN THREE ARRIVAL (RNAV)

(TRSTN.TRSTN3) 04FEB16

WASHINGTON, D.C.

NOTE: Chart not to scale.