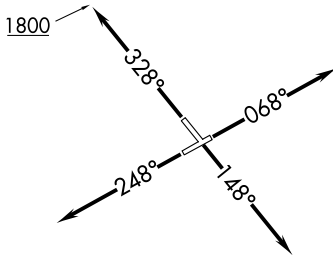


**TOP ALTITUDE:  
ASSIGNED BY ATC**

ATIS  
124.875  
GND CON  
121.85  
DETROIT CITY TOWER  
121.3 257.8  
DETROIT DEP CON  
134.3 284.0



TAKEOFF MINIMUMS:

Rwys 7, 15, 33: Standard.

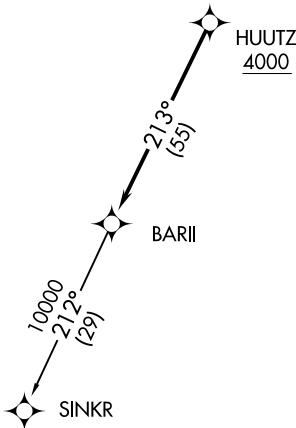
Rwy 25: Standard with minimum climb  
of 210' per NM to 1000.

NOTE: RNAV 1.

NOTE: RADAR required.

NOTE: DME/DME/IRU or GPS required.

NOTE: Turbojet departures at/above 10000,  
maintain 280K until advised by ATC.



NOTE: Chart not to scale.



**DEPARTURE ROUTE DESCRIPTION**

TAKEOFF RUNWAY 7: Climb on heading 068° or as assigned for RADAR vectors to cross HUUTZ at or above 4000, thence....

TAKEOFF RUNWAY 15: Climb on heading 148° or as assigned for RADAR vectors to cross HUUTZ at or above 4000, thence....

TAKEOFF RUNWAY 25: Climb on heading 248° or as assigned for RADAR vectors to cross HUUTZ at or above 4000, thence....

TAKEOFF RUNWAY 33: Climb on heading 328° to 1800 then as assigned for RADAR vectors to cross HUUTZ at or above 4000, thence....

....on track 213° to BARII, then on (transition). Maintain ATC assigned altitude, expect filed altitude 10 minutes after departure.

SINKR TRANSITION (BARI2.SINKR):

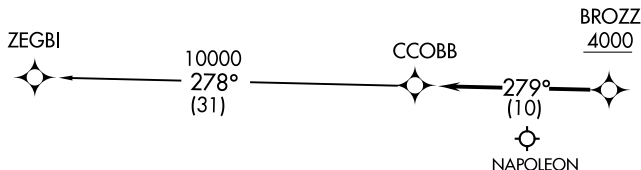
(CCOBB2, CCOBB) 15AUG19

CCOBB TWO DEPARTURE (RNAV)

**TOP ALTITUDE:  
ASSIGNED BY ATC**

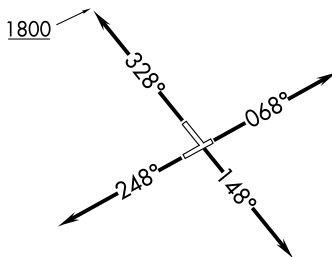
TAKEOFF MINIMUMS:

Rwys 7, 15, 33: Standard.  
Rwy 25: Standard with minimum climb  
of 210' per NM to 1000.



- NOTE: RNAV 1.
- NOTE: RADAR required.
- NOTE: DME/DME/IRU or GPS required.
- NOTE: Turbojet departures at/above 10000, maintain 280K until advised by ATC.
- NOTE: For use by aircraft filed at or below FL220, or as assigned by ATC.
- NOTE: CAUTION: Parachute jumping 6 NM SW of BROZZ, 3 NM radius of Napoleon Airport (3NP) at or below 17999 (SR-SS).

NOTE: Chart not to scale.



ATIS  
124.875  
GND CON  
121.85  
DETROIT CITY TOWER  
121.3 257.8  
DETROIT DEP CON  
134.3 284.0



(CCOBB2, CCOBB) 20142

CCOBB TWO DEPARTURE (RNAV)

AL-118 (FAA)

COLEMAN A YOUNG MUNI (DET)  
DETROIT, MICHIGAN

**DEPARTURE ROUTE DESCRIPTION**

- TAKEOFF RUNWAY 7: Climb on heading 068° or as assigned for RADAR vectors to cross BROZZ at or above 4000, thence....
- TAKEOFF RUNWAY 15: Climb on heading 148° or as assigned for RADAR vectors to cross BROZZ at or above 4000, thence....
- TAKEOFF RUNWAY 25: Climb on heading 248° or as assigned for RADAR vectors to cross BROZZ at or above 4000, thence....
- TAKEOFF RUNWAY 33: Climb on heading 328° to 1800 then as assigned for RADAR vectors to cross BROZZ at or above 4000, thence....

....on track 279° to CCOBB, then on (transition). Maintain ATC assigned altitude, expect filed altitude 10 minutes after departure.

ZEGBI TRANSITION (CCOBB2.ZEGBI):

DETROIT, MICHIGAN  
COLEMAN A YOUNG MUNI (DET)

(CLVIN2.CLVIN) 19227

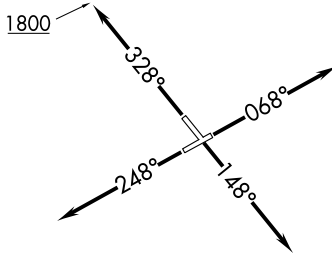
# CLVIN TWO DEPARTURE (RNAV)

AL-118 (FAA)

COLEMAN A YOUNG MUNI (DET)

DETROIT, MICHIGAN

**TOP ALTITUDE:  
ASSIGNED BY ATC**



ATIS  
 124.875  
 GND CON  
 121.85  
 DETROIT CITY TOWER  
 121.3 257.8  
 DETROIT DEP CON  
 134.3 284.0

PHAUL  
4000

CLVIN

TFTUN

RINTE

PUUDL

STAZE

### TAKEOFF MINIMUMS:

Rwys 7, 15, 33: Standard.

Rwy 25: Standard with minimum climb  
of 210' per NM to 1000.

NOTE: RNAV 1.

NOTE: RADAR required.

NOTE: DME/DME/IRU or GPS required.

NOTE: Turbojet departures at/above 10000,  
maintain 280K until advised by ATC.

NOTE: Chart not to scale.

### DEPARTURE ROUTE DESCRIPTION

**TAKEOFF RUNWAY 7:** Climb on heading 068° or as assigned  
for RADAR vectors to cross PHAUL at or above 4000, thence....

**TAKEOFF RUNWAY 15:** Climb on heading 148° or as assigned  
for RADAR vectors to cross PHAUL at or above 4000, thence....

**TAKEOFF RUNWAY 25:** Climb on heading 248° or as assigned  
for RADAR vectors to cross PHAUL at or above 4000, thence....

**TAKEOFF RUNWAY 33:** Climb on heading 328° to 1800 then  
as assigned for RADAR vectors to cross PHAUL at or above 4000,  
thence....

....on track 206° to CLVIN, then on (transition). Maintain  
ATC assigned altitude, expect filed altitude 10 minutes after  
departure.

STAZE TRANSITION (CLVIN2.STAZE):

# CLVIN TWO DEPARTURE (RNAV)

(CLVIN2.CLVIN) 15AUG19

DETROIT, MICHIGAN

COLEMAN A YOUNG MUNI (DET)

EC-1, 22 FEB 2024 to 21 MAR 2024

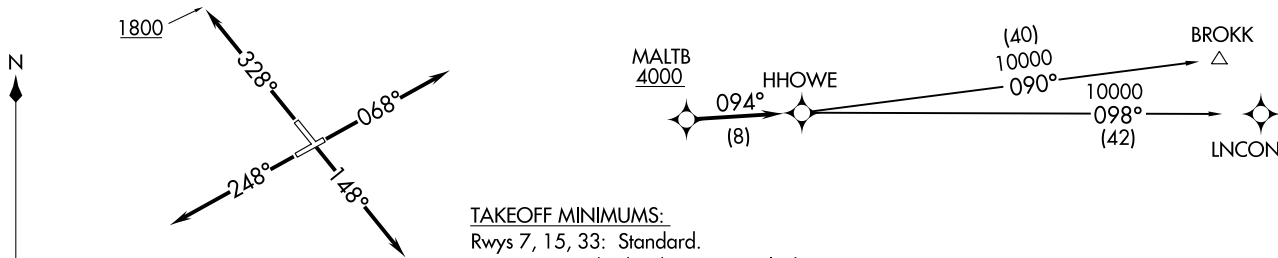
EC-1, 22 FEB 2024 to 21 MAR 2024

HHOWE THREE DEPARTURE (RNAV)  
(HHOWE3.HHOWE) 05DEC19

ATIS  
124.875  
GND CON  
121.85  
DETROIT CITY TOWER  
121.3 257.8  
DETROIT DEP CON  
134.3 284.0

NOTE: RNAV 1.  
NOTE: RADAR required.  
NOTE: DME/DME/IRU or GPS required.  
NOTE: Turbojet departures at/above 10000, maintain 280K until advised by ATC.  
NOTE: BROKK TRANSITION: For use by flights filed at or below FL270, or as assigned by ATC.

**TOP ALTITUDE:  
ASSIGNED BY ATC**



TAKEOFF MINIMUMS:  
Rwys 7, 15, 33: Standard.  
Rwy 25: Standard with minimum climb of 210' per NM to 1000.

NOTE: Chart not to scale.

**DEPARTURE ROUTE DESCRIPTION**

TAKEOFF RUNWAY 7: Climb on heading 068° or as assigned for RADAR vectors to cross MALTB at or above 4000, thence....  
TAKEOFF RUNWAY 15: Climb on heading 148° or as assigned for RADAR vectors to cross MALTB at or above 4000, thence....  
TAKEOFF RUNWAY 25: Climb on heading 248° or as assigned for RADAR vectors to cross MALTB at or above 4000, thence....  
TAKEOFF RUNWAY 33: Climb on heading 328° to 1800 then as assigned for RADAR vectors to cross MALTB at or above 4000, thence....

...on track 094° to HHOWE, then on (transition). Maintain ATC assigned altitude, expect filed altitude 10 minutes after departure.

BROKK TRANSITION (HHOWE3.BROKK)  
LNCON TRANSITION (HHOWE3.LNCON)

DETROIT, MICHIGAN  
COLEMAN A YOUNG MUNI (DET)

(HHOWE3.HHOWE) 19339  
HHOWE THREE DEPARTURE (RNAV) AL-118 (FAA)

COLEMAN A YOUNG MUNI (DET)  
DETROIT, MICHIGAN

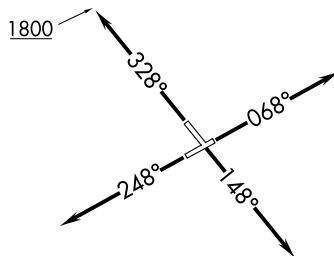
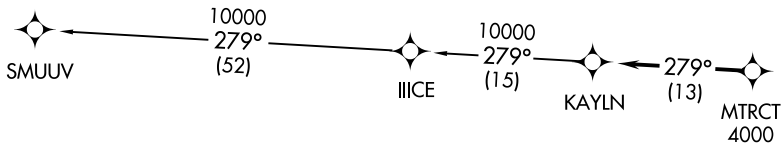
KAYLN TWO DEPARTURE (RNAV)  
 (KAYLN2.KAYLN) 15AUG19

**TOP ALTITUDE:  
 ASSIGNED AT ATC**

TAKEOFF MINIMUMS:

Rwys 7, 15, 33: Standard.  
 Rwy 25: Standard with minimum climb  
 of 210' per NM to 1000.

ATIS 124.875  
 GND CON 121.85  
 DETROIT CITY TOWER 121.3 257.8  
 DETROIT DEP CON 134.3 284.0



NOTE: RNAV 1.  
 NOTE: RADAR required.  
 NOTE: DME/DME/IRU or GPS required.  
 NOTE: Turbojet departures at/above 10000,  
 maintain 280K until advised by ATC.

NOTE: Chart not to scale.

(KAYLN2.KAYLN) 19227  
 KAYLN TWO DEPARTURE (RNAV)

AL-118 (FAA)

**DEPARTURE ROUTE DESCRIPTION**

- TAKEOFF RUNWAY 7: Climb on heading 068° or as assigned for RADAR vectors to cross MTRCT at or above 4000, thence....
- TAKEOFF RUNWAY 15: Climb on heading 148° or as assigned for RADAR vectors to cross MTRCT at or above 4000, thence....
- TAKEOFF RUNWAY 25: Climb on heading 248° or as assigned for RADAR vectors to cross MTRCT at or above 4000, thence....
- TAKEOFF RUNWAY 33: Climb on heading 328° to 1800 then as assigned for RADAR vectors to cross MTRCT at or above 4000, thence....

...on track 279° to KAYLN, then on (transition). Maintain ATC assigned altitude, expect filed altitude 10 minutes after departure.

SMUUV TRANSITION (KAYLN2.SMUUV):

DETROIT, MICHIGAN  
 COLEMAN A YOUNG MUNI (DET)

COLEMAN A YOUNG MUNI (DET)  
 DETROIT, MICHIGAN

(KZLOV1.WINNZ) 22195

# KZLOV ONE DEPARTURE (RNAV)

AL-118 (FAA)

COLEMAN A YOUNG MUNI (DET)

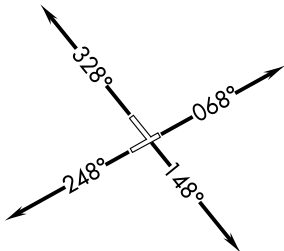
DETROIT, MICHIGAN

ATIS  
124.875  
GND CON  
121.85  
DETROIT CITY TOWER  
121.3 257.8  
DETROIT DEP CON  
134.3 284.0

RNAV 1 - DME/DME/IRU or GPS.

RADAR required.

**TOP ALTITUDE:  
ASSIGNED BY ATC**

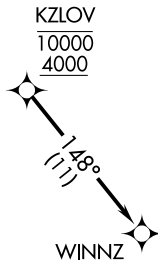


### TAKEOFF MINIMUMS:

Rwy 7, 15, 25, 33: Standard with minimum climb of 500' per NM to 1126.

NOTE: Turbojet departures at/above 10000, maintain 280K until advised by ATC.

NOTE: For use by Cleveland terminal arrivals only.



NOTE: Chart not to scale.



## DEPARTURE ROUTE DESCRIPTION

**TAKEOFF RUNWAY 7:** Climb on heading 068° or as assigned for RADAR vectors to cross KZLOV at or above 4000 and at or below 10000, thence....

**TAKEOFF RUNWAY 15:** Climb on heading 148° or as assigned for RADAR vectors to cross KZLOV at or above 4000 and at or below 10000, thence....

**TAKEOFF RUNWAY 25:** Climb on heading 248° or as assigned for RADAR vectors to cross KZLOV at or above 4000 and at or below 10000, thence....

**TAKEOFF RUNWAY 33:** Climb on heading 328° or as assigned for RADAR vectors to cross KZLOV at or above 4000 and at or below 10000, thence....

...on track 148° to WINNZ. Maintain assigned altitude, expect filed altitude ten minutes after departure.

KZLOV ONE DEPARTURE (RNAV)

(KZLOV1.WINNZ) 14JUL22

DETROIT, MICHIGAN

COLEMAN A YOUNG MUNI (DET)

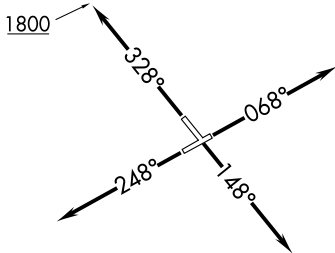
EC-1, 22 FEB 2024 to 21 MAR 2024

EC-1, 22 FEB 2024 to 21 MAR 2024

LIDDS TWO DEPARTURE (RNAV)  
(LIDDS2.LIDDS) 15AUG19

DETROIT, MICHIGAN  
COLEMAN A YOUNG MUNI (DET)

**TOP ALTITUDE:  
ASSIGNED BY ATC**



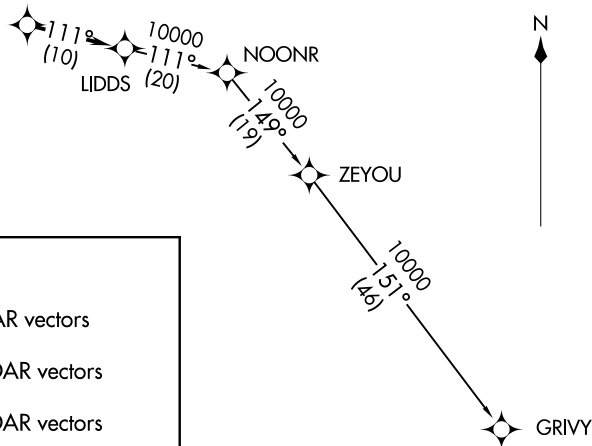
TAKEOFF MINIMUMS:

Rwys 7, 15, 33: Standard.  
Rwy 25: Standard with minimum climb  
of 210' per NM to 1000.

ATIS 124.875  
GND CON 121.85  
DETROIT CITY TOWER 121.3 257.8  
DETROIT DEP CON 134.3 284.0

NOTE: RNAV 1.  
NOTE: RADAR required.  
NOTE: DME/DME/IRU or GPS required.  
NOTE: Turbojet departures at/above 10000,  
maintain 280K until advised by ATC.

KZLOV  
15000  
4000



**DEPARTURE ROUTE DESCRIPTION**

TAKEOFF RUNWAY 7: Climb on heading 068° or as assigned for RADAR vectors to cross KZLOV between 4000 and 15000, thence....  
TAKEOFF RUNWAY 15: Climb on heading 148° or as assigned for RADAR vectors to cross KZLOV between 4000 and 15000, thence....  
TAKEOFF RUNWAY 25: Climb on heading 248° or as assigned for RADAR vectors to cross KZLOV between 4000 and 15000, thence....  
TAKEOFF RUNWAY 33: Climb on heading 328° to 1800 then as assigned for RADAR vectors to cross KZLOV between 4000 and 15000, thence....

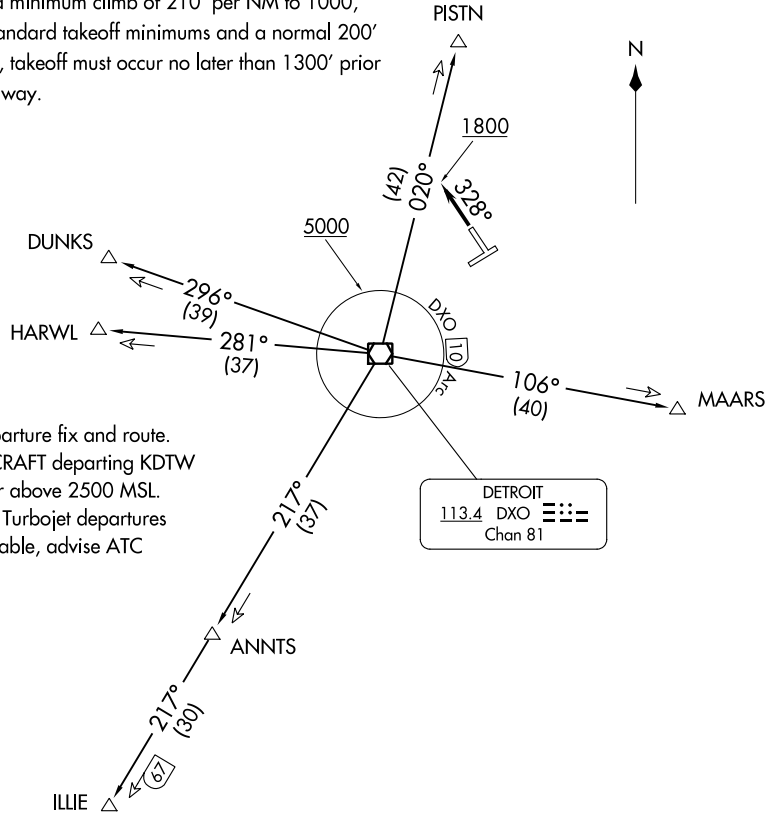
....on track 111° to LIDDS, then on (transition). Maintain ATC assigned altitude, expect filed altitude 10 minutes after departure.

GRIVY TRANSITION (LIDDS2.GRIVY):

NOTE: Chart not to scale.

(LIDDS2.LIDDS) 1922Z  
LIDDS TWO DEPARTURE (RNAV) AL-118 (FAA)  
DETROIT, MICHIGAN  
COLEMAN A YOUNG MUNI (DET)

**TOP ALTITUDE:  
3000**



TAKEOFF MINIMUMS

Rwys 7, 15, 33: Standard.  
 Rwy 25: Standard with a minimum climb of 210' per NM to 1000, or alternatively, with standard takeoff minimums and a normal 200' per NM climb gradient, takeoff must occur no later than 1300' prior to departure end of runway.

ATIS 124.875  
 GND CON 121.85  
 DETROIT CITY TOWER 121.3 257.8  
 DETROIT DEP CON 134.3 284.0

NOTE: RADAR required.  
 NOTE: DME required.  
 NOTE: For use by non-RNAV equipped aircraft only.

SPECIAL INSTRUCTIONS:

When using this departure, file the appropriate depicted departure fix and route. Aircraft over HARWL must file FL220 and below. PROP AIRCRAFT departing KDTW Rwy 21L/R and 22L/R westbound, cross DXO 3.5 DME at or above 2500 MSL. Aircraft landing Cleveland (CLE) must file MAARS transition. Turbojet departures at/above 10000, maintain 280K until advised by ATC. If unable, advise ATC prior to departure.

(NARRATIVE ON FOLLOWING PAGE)

NOTE: Chart not to scale.





DEPARTURE ROUTE DESCRIPTION

TAKEOFF RUNWAYS 7, 15, 25: Climb on assigned heading, thence....

TAKEOFF RUNWAY 33: Climb heading 328° to 1800, then on assigned heading, thence....

.....maintain ATC assigned altitude for RADAR vectors to intercept filed/assigned transition or enroute fix/navaid. When ATC assigned altitude is at or above 5000, cross DXO 10 DME Arc at or above 5000 for noise abatement. If unable to comply, advise ATC prior to departure. Expect clearance to filed altitude/flight level within ten (10) minutes after departure.

DUNKS TRANSITION (METRO3.DUNKS): From over DXO VOR/DME on DXO R-296 to DUNKS.

HARWL TRANSITION (METRO3.HARWL): From over DXO VOR/DME on DXO R-281 to HARWL.

ILLIE TRANSITION (METRO3.ILLIE): From over DXO VOR/DME on DXO R-217 to ILLIE.

MAARS TRANSITION (METRO3.MAARS): From over DXO VOR/DME on DXO R-106 to MAARS.

PISTN TRANSITION (METRO3.PISTN): From over DXO VOR/DME on DXO R-020 to PISTN.

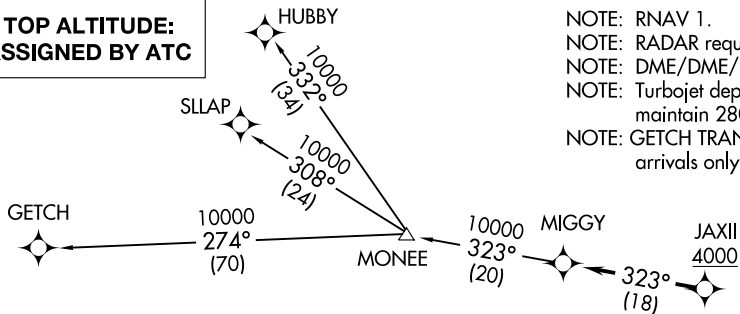
EC-1, 22 FEB 2024 to 21 MAR 2024

EC-1, 22 FEB 2024 to 21 MAR 2024

MIGGY TWO DEPARTURE (RNAV)  
(MIGGY2.MIGGY) 15AUG19

DETROIT, MICHIGAN  
COLEMAN A YOUNG MUNI (DET)

**TOP ALTITUDE:  
ASSIGNED BY ATC**



- NOTE: RNAV 1.
- NOTE: RADAR required.
- NOTE: DME/DME/IRU or GPS required.
- NOTE: Turbojet departures at/above 10000, maintain 280K until advised by ATC.
- NOTE: GETCH TRANSITION: For use by KMKE area arrivals only, or as assigned by ATC.

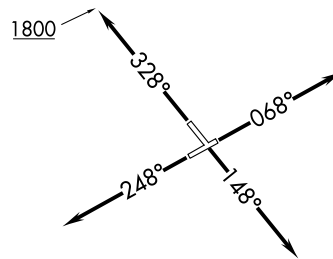
ATIS 124.875  
GND CON 121.85  
DETROIT CITY TOWER 121.3 257.8  
DETROIT DEP CON 134.3 284.0

**DEPARTURE ROUTE DESCRIPTION**

- TAKEOFF RUNWAY 7: Climb on heading 068° or as assigned for RADAR vectors to cross JAXII at or above 4000, thence....
- TAKEOFF RUNWAY 15: Climb on heading 148° or as assigned for RADAR vectors to cross JAXII at or above 4000, thence....
- TAKEOFF RUNWAY 25: Climb on heading 248° or as assigned for RADAR vectors to cross JAXII at or above 4000, thence....
- TAKEOFF RUNWAY 33: Climb on heading 328° to 1800 then as assigned for RADAR vectors to cross JAXII at or above 4000, thence....

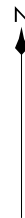
....on track 323° to MIGGY, then on (transition). Maintain ATC assigned altitude, expect filed altitude 10 minutes after departure.

- GETCH TRANSITION (MIGGY2.GETCH):
- HUBBY TRANSITION (MIGGY2.HUBBY):
- SLLAP TRANSITION (MIGGY2.SLLAP):



**TAKEOFF MINIMUMS:**

- Rwys 7, 15, 33: Standard.
- Rwy 25: Standard with minimum climb of 210' per NM to 1000.



NOTE: Chart not to scale.

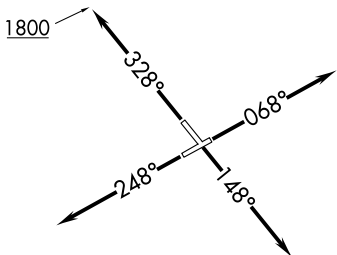
(MIGGY2.MIGGY) 19227  
MIGGY TWO DEPARTURE (RNAV)

AL-118 (FAA)

DETROIT, MICHIGAN  
COLEMAN A YOUNG MUNI (DET)

PAVYL TWO DEPARTURE (RNAV)  
(PAVYL2.PAVYL) 15AUG19

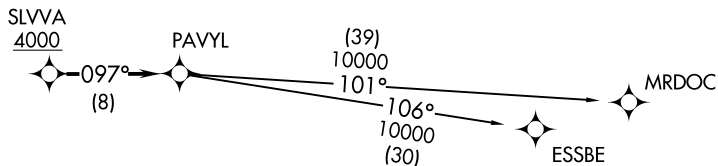
**TOP ALTITUDE:  
ASSIGNED BY ATC**



**TAKEOFF MINIMUMS:**  
Rwys 7, 15, 33: Standard.  
Rwy 25: Standard with minimum climb  
of 210' per NM to 1000.

NOTE: RNAV 1.  
NOTE: RADAR required.  
NOTE: DME/DME/IRU or GPS required.  
NOTE: Turbojet departures at/above 10000,  
maintain 280K until advised by ATC.

ATIS 124.875  
GND CON 121.85  
DETROIT CITY TOWER 121.3 257.8  
DETROIT DEP CON 134.3 284.0



NOTE: Chart not to scale.

**DEPARTURE ROUTE DESCRIPTION**

- TAKEOFF RUNWAY 7: Climb on heading 068° or as assigned for RADAR vectors to cross SLVVA at or above 4000, thence....
- TAKEOFF RUNWAY 15: Climb on heading 148° or as assigned for RADAR vectors to cross SLVVA at or above 4000, thence....
- TAKEOFF RUNWAY 25: Climb on heading 248° or as assigned for RADAR vectors to cross SLVVA at or above 4000, thence....
- TAKEOFF RUNWAY 33: Climb on heading 328° to 1800 then as assigned for RADAR vectors to cross SLVVA at or above 4000, thence....

....on track 097° to PAVYL, then on (transition). Maintain ATC assigned altitude, expect filed altitude 10 minutes after departure.

ESSBE TRANSITION (PAVYL2.ESSBE):  
MRDOC TRANSITION (PAVYL2.MRDOC):

DETROIT, MICHIGAN  
COLEMAN A YOUNG MUNI (DET)

(PAVYL2.PAVYL) 192ZZ  
PAVYL TWO DEPARTURE (RNAV)

AL-118 (FAA)

DETROIT, MICHIGAN  
COLEMAN A YOUNG MUNI (DET)

SNDRS TWO DEPARTURE (RNAV)  
(SNDRS2.SNDRS) 15AUG19

### DEPARTURE ROUTE DESCRIPTION

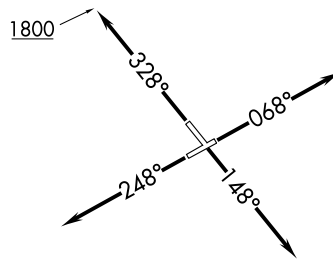
- TAKEOFF RUNWAY 7: Climb on heading 068° or as assigned for RADAR vectors to cross JWELS at or above 4000, thence....
- TAKEOFF RUNWAY 15: Climb on heading 148° or as assigned for RADAR vectors to cross JWELS at or above 4000, thence....
- TAKEOFF RUNWAY 25: Climb on heading 248° or as assigned for RADAR vectors to cross JWELS at or above 4000, thence....
- TAKEOFF RUNWAY 33: Climb on heading 328° to 1800 then as assigned for RADAR vectors to cross JWELS at or above 4000, thence....

....on track 218° to SNDRS, then on (transition). Maintain ATC assigned altitude, expect filed altitude 10 minutes after departure.

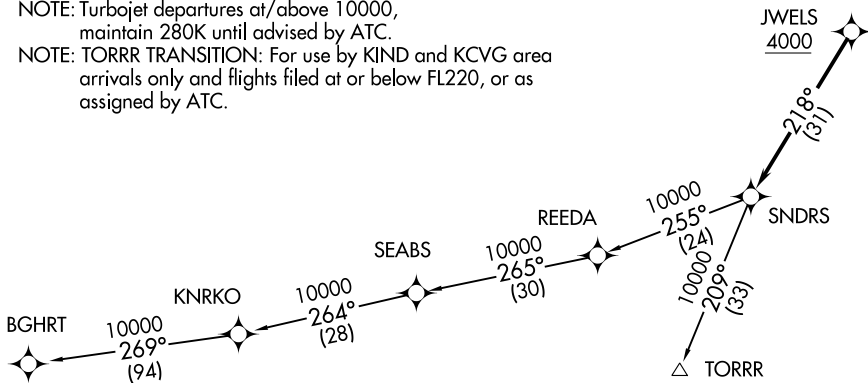
- BGHRT TRANSITION (SNDRS2.BGHRT):
- TORRR TRANSITION (SNDRS2.TORRR):

### TOP ALTITUDE: ASSIGNED BY ATC

ATIS 124.875  
GND CON 121.85  
DETROIT CITY TOWER 121.3 257.8  
DETROIT DEP CON 134.3 284.0



- NOTE: RNAV 1.
- NOTE: RADAR required.
- NOTE: DME/DME/IRU or GPS required.
- NOTE: Turbojet departures at/above 10000, maintain 280K until advised by ATC.
- NOTE: TORRR TRANSITION: For use by KIND and KCVG area arrivals only and flights filed at or below FL220, or as assigned by ATC.



TAKEOFF MINIMUMS:  
Rwys 7, 15, 33: Standard.  
Rwy 25: Standard with minimum climb of 210' per NM to 1000.

NOTE: Chart not to scale.

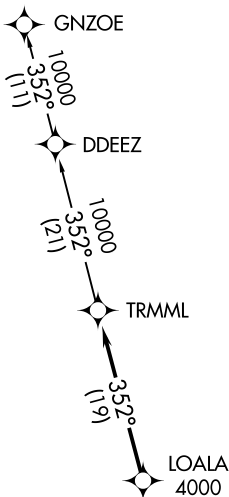
DETROIT, MICHIGAN  
COLEMAN A YOUNG MUNI (DET)

(SNDRS2.SNDRS) 1922Z  
SNDRS TWO DEPARTURE (RNAV)

AL-118 (FAA)

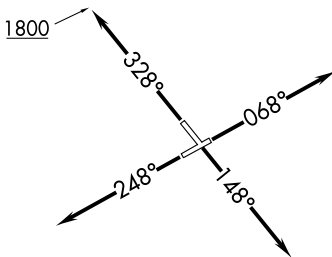
DETROIT, MICHIGAN  
COLEMAN A YOUNG MUNI (DET)

**TOP ALTITUDE:  
ASSIGNED BY ATC**



ATIS  
124.875  
GND CON  
121.85  
DETROIT CITY TOWER  
121.3 257.8  
DETROIT DEP CON  
134.3 284.0

TAKEOFF MINIMUMS:  
Rwys 7, 15, 33: Standard.  
Rwy 25: Standard with minimum climb  
of 210' per NM to 1000.



- NOTE: RNAV 1.
- NOTE: RADAR required.
- NOTE: DME/DME/IRU or GPS required.
- NOTE: Turbojet departures at/above 10000, maintain 280K until advised by ATC.

NOTE: Chart not to scale.

**DEPARTURE ROUTE DESCRIPTION**

- TAKEOFF RUNWAY 7: Climb on heading 068° or as assigned for RADAR vectors to cross LOALA at or above 4000, thence....
- TAKEOFF RUNWAY 15: Climb on heading 148° or as assigned for RADAR vectors to cross LOALA at or above 4000, thence....
- TAKEOFF RUNWAY 25: Climb on heading 248° or as assigned for RADAR vectors to cross LOALA at or above 4000, thence....
- TAKEOFF RUNWAY 33: Climb on heading 328° to 1800 then as assigned for RADAR vectors to cross LOALA at or above 4000, thence....

....on track 352° to TRMML, then on (transition). Maintain ATC assigned altitude, expect filed altitude 10 minutes after departure.

GNZOE TRANSITION (TRMML3.GNZOE):

(ZETTR3.ZETTR) 19339

# ZETTR THREE DEPARTURE (RNAV)

AL-118 (FAA)

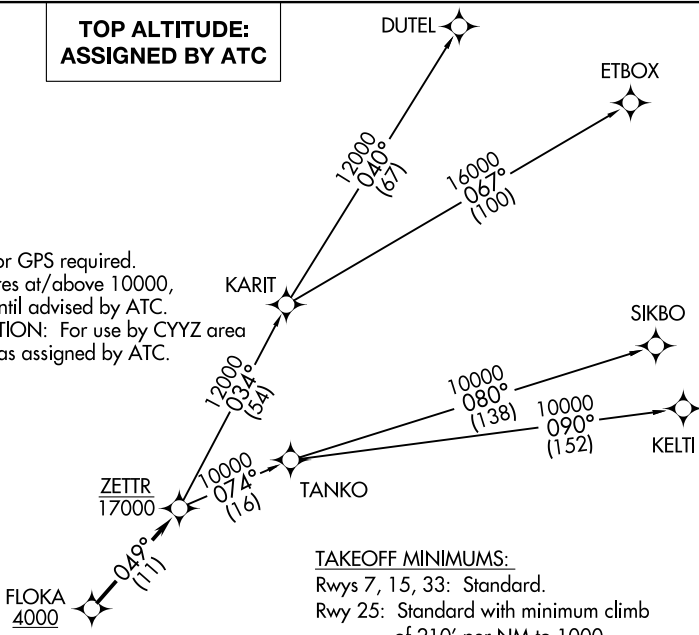
COLEMAN A YOUNG MUNI (DET)

DETROIT, MICHIGAN

ATIS  
124.875  
GND CON  
121.85  
DETROIT CITY TOWER  
121.3 257.8  
DETROIT DEP CON  
134.3 284.0

**TOP ALTITUDE:  
ASSIGNED BY ATC**

- NOTE: RNAV 1.
- NOTE: RADAR required.
- NOTE: DME/DME/IRU or GPS required.
- NOTE: Turbojet departures at/above 10000, maintain 280K until advised by ATC.
- NOTE: TANKO TRANSITION: For use by CYYZ area arrivals only, or as assigned by ATC.



TAKEOFF MINIMUMS:

Rwys 7, 15, 33: Standard.  
Rwy 25: Standard with minimum climb of 210' per NM to 1000.

**DEPARTURE ROUTE DESCRIPTION**

TAKEOFF RUNWAY 7: Climb on heading 068° or as assigned for RADAR vectors to cross FLOKA at or above 4000, thence....

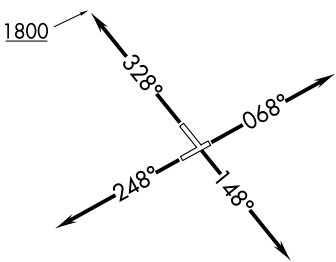
TAKEOFF RUNWAY 15: Climb on heading 148° or as assigned for RADAR vectors to cross FLOKA at or above 4000, thence....

TAKEOFF RUNWAY 25: Climb on heading 248° or as assigned for RADAR vectors to cross FLOKA at or above 4000, thence....

TAKEOFF RUNWAY 33: Climb on heading 328° to 1800 then as assigned for RADAR vectors to cross FLOKA at or above 4000, thence....

....on track 049° to cross ZETTR at or below 17000, then on (transition). Maintain ATC assigned altitude, expect filed altitude 10 minutes after departure.

- DUTEL TRANSITION (ZETTR3.DUTEL);
- ETBOX TRANSITION (ZETTR3.ETBOX);
- KELTI TRANSITION (ZETTR3.KELTI);
- SIKBO TRANSITION (ZETTR3.SIKBO);
- TANKO TRANSITION (ZETTR3.TANKO);



NOTE: Chart not to scale.

ZETTR THREE DEPARTURE (RNAV)  
(ZETTR3.ZETTR) 05DEC19

DETROIT, MICHIGAN  
COLEMAN A YOUNG MUNI (DET)

EC-1, 22 FEB 2024 to 21 MAR 2024

EC-1, 22 FEB 2024 to 21 MAR 2024