

LOC I- DDC 111.7	APP CRS 146°	Rwy ldg TDZE Apt Elev 6329 2586 2596
-----------------------------------	------------------------	--

ILS or LOC RWY 14

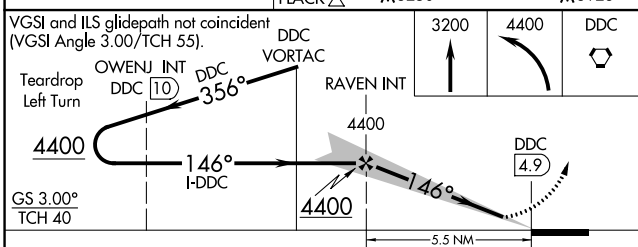
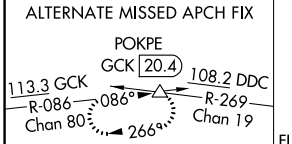
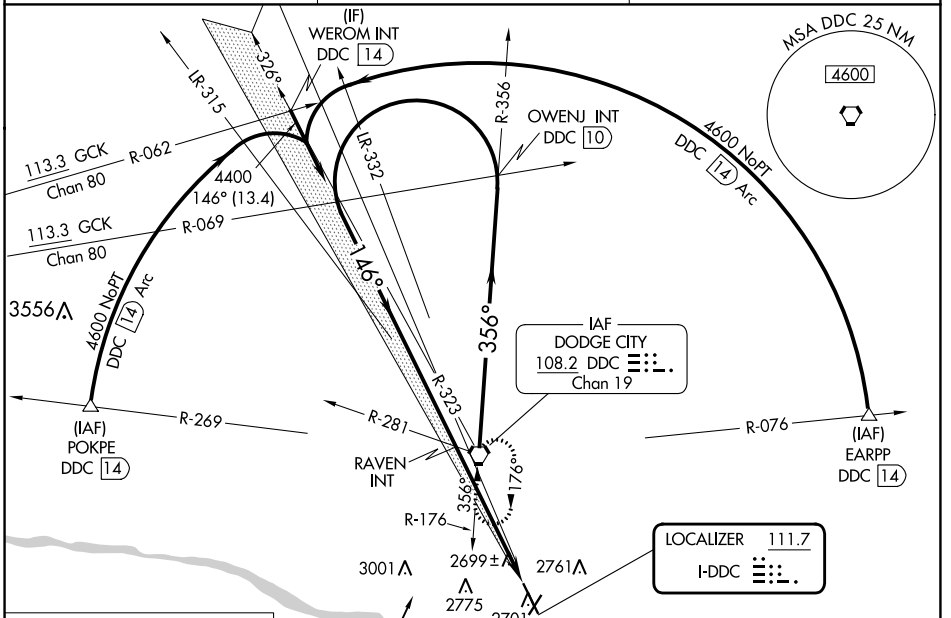
DODGE CITY RGNL (DDC)

A For inop ALS, increase S-LOC 14 Cat C/D visibility to 1 SM.



MISSED APPROACH: Climb to 3200 then climbing left turn to 4400 direct DDC VORTAC and hold.

ASOS 118,525	KANSAS CITY CENTER 125.2 285,425	UNICOM 122.7 (CTAF)
------------------------	--	-------------------------------



ELEV 2596	TDZE 2586
-----------	-----------

REIL Rwy 2, 20 and 32
MIRL Rwy 14-32 and 2-20
FAF to MAP 5.5 NM

CATEGORY	A	B	C	D
S-ILS 14	2786-½ 200 (200-½)			
S-LOC 14	2960-½ 374 (400-½)	2960-⅝ 374 (400-⅝)		
CIRCLING	3040-1 444 (500-1)	3080-1 484 (500-1)	3320-2 724 (800-2)	3320-2¼ 724 (800-2¼)

Knots	60	90	120	150	180
Min:Sec	5:30	3:40	2:45	2:12	1:50

NC-2, 22 FEB 2024 to 21 MAR 2024

NC-2, 22 FEB 2024 to 21 MAR 2024

DODGE CITY, KANSAS


AL-676 (FAA)

23110

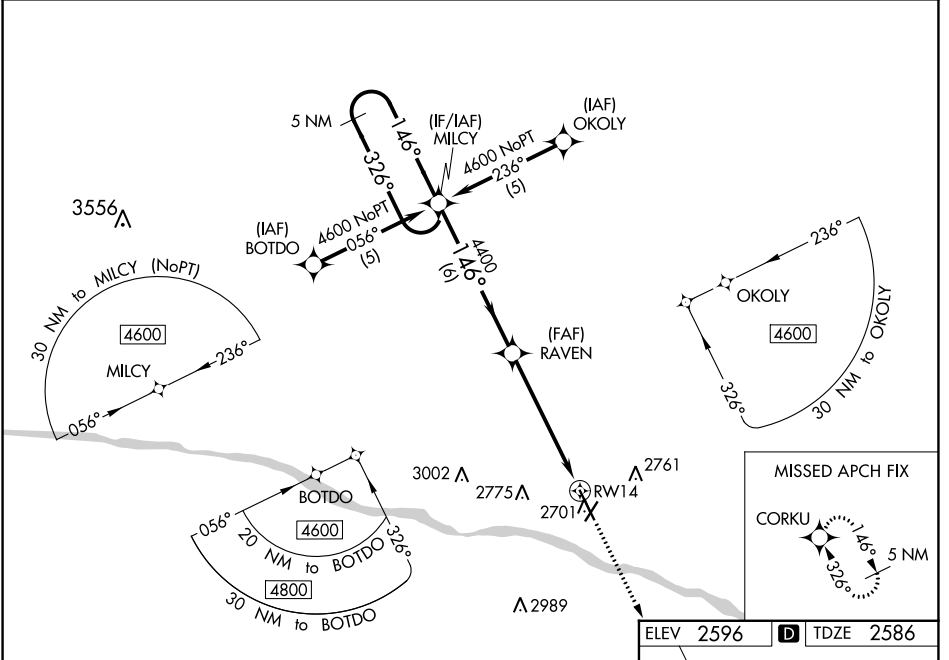
WAAS CH 65609 W14A	APP CRS 146°	Rwy Idg TDZE Apt Elev	6329 2586 2596
--	------------------------	-----------------------------	---

RNAV (GPS) RWY 14

DODGE CITY RGNL (DDC)

<p>⚠ DME/DME RNP-0.3 NA. For uncompensated Baro-VNAV systems, LNAV/VNAV NA below -19°C (-2°F) or above 54°C (130°F). For inop ALS, increase LPV all Cats visibility to ¾ SM and LNAV/VNAV all Cats visibility to 1 ½ SM.</p>	<p>MALSR</p> 	<p>MISSED APPROACH: Climb to 4600 direct CORKU and hold.</p>
---	--	--

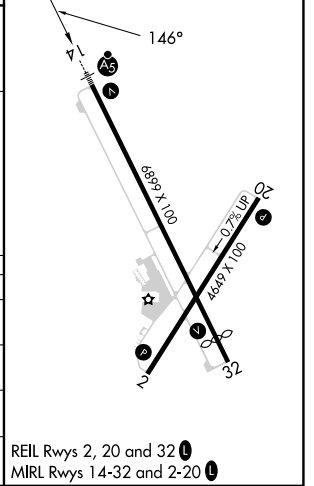
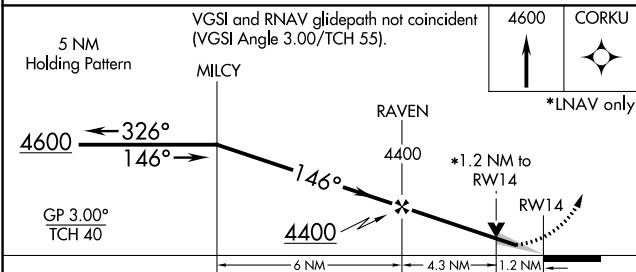
<p>ASOS 118.525</p>	<p>KANSAS CITY CENTER 125.2 285.425</p>	<p>UNICOM 122.7 (CTAF) 1</p>
--------------------------------	--	---



NC-2, 22 FEB 2024 to 21 MAR 2024

NC-2, 22 FEB 2024 to 21 MAR 2024

ELEV 2596	D TDZE 2586
-----------	--------------------



CATEGORY	A	B	C	D
LPV DA		2836-½	250 (300-½)	
LNAV/VNAV DA		2991-1	405 (400-1)	
LNAV MDA	3020-½	434 (500-½)	3020-¾	434 (500-¾)
C CIRCLING	3040-1 444 (500-1)	3080-1 484 (500-1)	3320-2 724 (800-2)	3320-2¼ 724 (800-2¼)

REIL Rwy 2s, 20 and 32 **1**
MIRL Rwy 14-32 and 2-20 **1**

DODGE CITY, KANSAS
Amdt 1B 17AUG17

37°46'N-99°58'W

DODGE CITY RGNL (DDC)

RNAV (GPS) RWY 14

WAAS CH 73040 W02A	APP CRS 024°	Rwy Idg TDZE 4649 2596 Apt Elev 2596
--	------------------------	---

RNAV (GPS) RWY 2

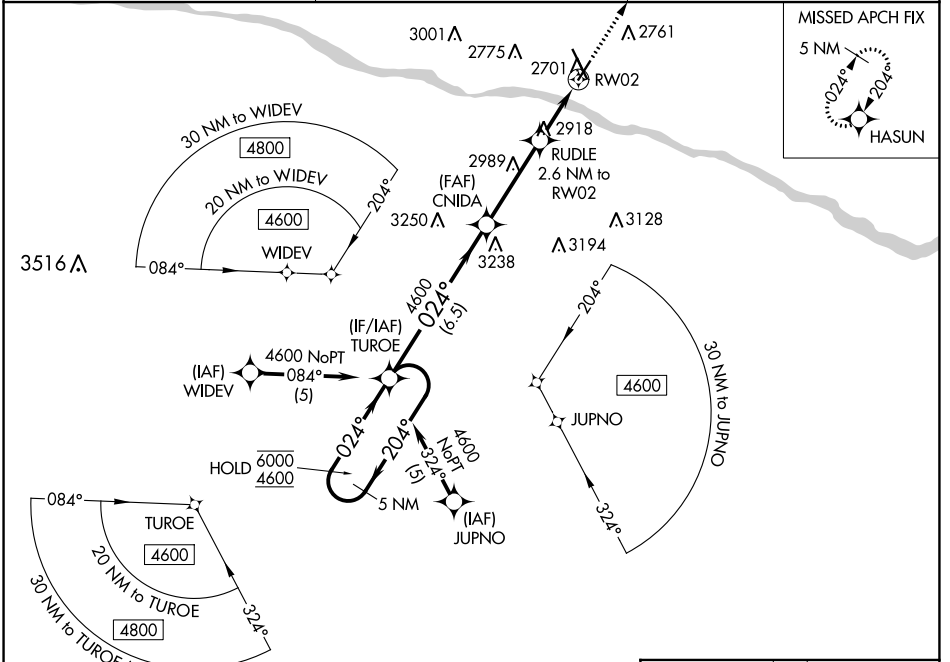
DODGE CITY RGNL (DDC)

RNP APCH - GPS.

⚠ Rwy 2 helicopter visibility reduction below 3/4 SM NA. For uncompensated Baro-VNAV systems, LNAV/VNAV NA below -9°C or above 54°C.

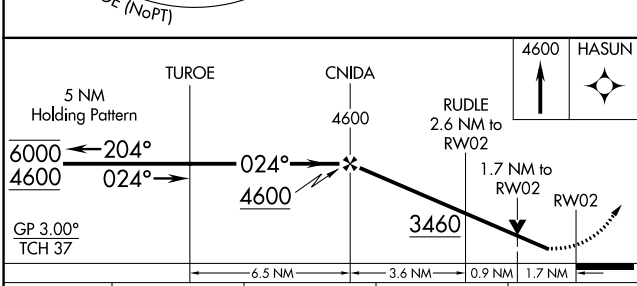
MISSED APPROACH: Climb to 4600 direct HASUN and hold.

ASOS 118.525	KANSAS CITY CENTER 125.2 285.425	UNICOM 122.7 (CTAF) 0
------------------------	--	---------------------------------



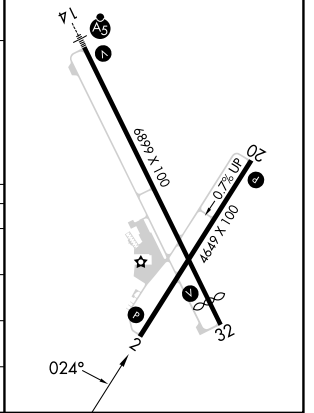
NC-2, 22 FEB 2024 to 21 MAR 2024

NC-2, 22 FEB 2024 to 21 MAR 2024



ELEV 2596 **D** TDZE 2596

REIL Rwy 2, 20, and 32 **L**
MIRL Rwy 14-32 and 2-20 **L**



CATEGORY	A	B	C	D
LPV DA	2846-1 250 (300-1)			NA
LNAV/VNAV DA	2883-1 287 (300-1)			NA
LNAV MDA	3180-1	584 (600-1)	3180-1 3/4 584 (600-1 3/4)	NA
C CIRCLING	3180-1	584 (600-1)	3320-2 724 (800-2)	NA

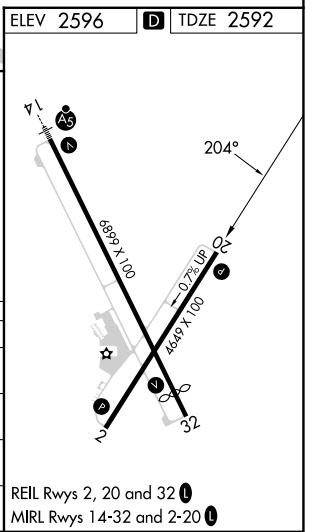
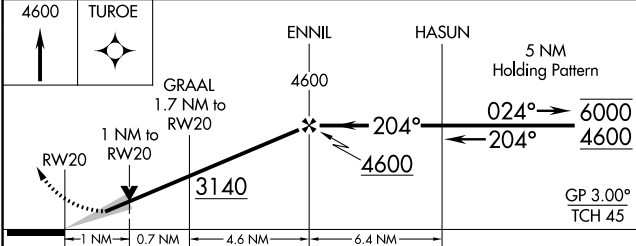
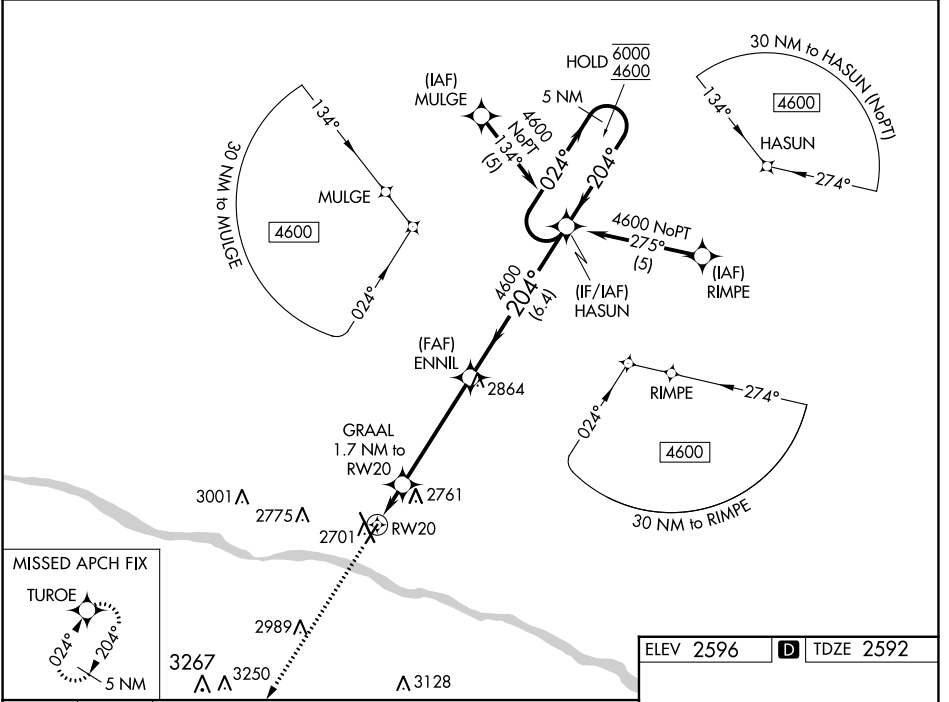
WAAS CH 78440 W20A	APP CRS 204°	Rwy Idg TDZE Apt Elev	4649 2592 2596
--	------------------------	-----------------------------	---

RNAV (GPS) RWY 20

DODGE CITY RGNL (DDC)

RNP APCH - GPS. ▲ For uncompensated Baro-VNAV systems, LNAV/VNAV NA below -9°C or above 54°C.	MISSED APPROACH: Climb to 4600 direct TUROE and hold.
--	---

ASOS 118.525	KANSAS CITY CENTER 125.2 285.425	UNICOM 122.7 (CTAF) 0
------------------------	--	---------------------------------



CATEGORY	A	B	C	D
LPV DA	2842-1	250 (300-1)		NA
LNAV/VNAV DA	2842-1	250 (300-1)		NA
LNAV MDA	2920-1	328 (400-1)		NA
C CIRCLING	3040-1 444 (500-1)	3080-1 484 (500-1)	3320-2 724 (800-2)	NA

NC-2, 22 FEB 2024 to 21 MAR 2024

NC-2, 22 FEB 2024 to 21 MAR 2024

WAAS CH 81938 W32A	APP CRS 326°	Rwy Idg TDZE Apt Elev 6329 2591 2596
--	------------------------	--

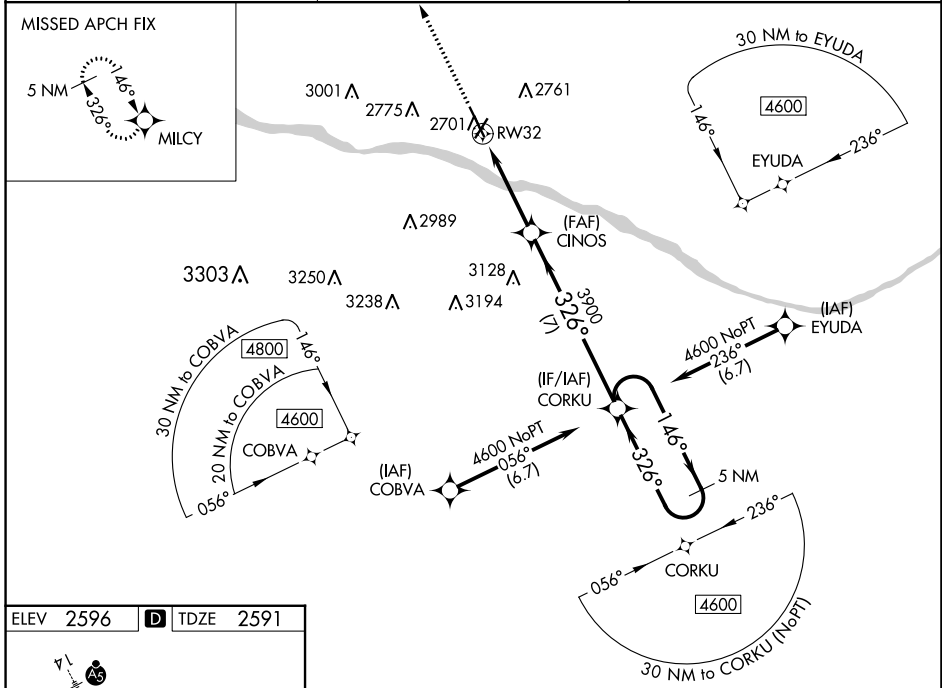
RNAV (GPS) RWY 32

DODGE CITY RGNL (DDC)

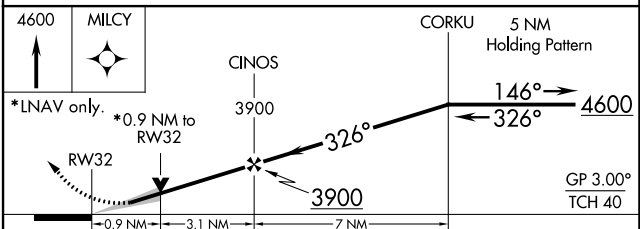
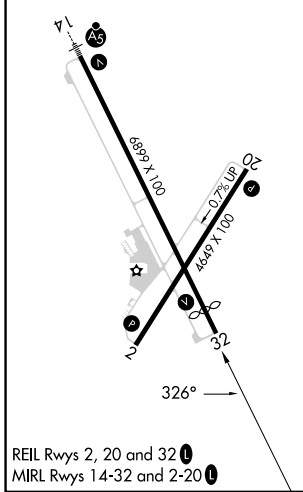
⚠ DME/DME RNP-0.3 NA. Baro-VNAV and VDP NA when using Garden City altimeter setting. For uncompensated Baro-VNAV systems, LNAV/VNAV NA below -19°C (-2°F) or above 54°C (130°F). When local altimeter setting not received, use Garden City altimeter setting: increase LPV DA to 2919 feet and all visibilities 3/8 miles, LNAV/VNAV DA to 2969 feet and all visibilities 3/8 mile; increase all MDA 140 feet and LNAV visibility Cat C and D 3/8 mile and Circling visibility Cat C and D 1/2 mile.

MISSED APPROACH:
Climb to 4600 direct MILCY and hold.

ASOS 118.525	KANSAS CITY CENTER 125.2 285.425	UNICOM 122.7 (CTAF) 0
------------------------	--	---------------------------------



ELEV 2596	D TDZE 2591
-----------	--------------------



CATEGORY	A	B	C	D
LPV DA		2791-3/4	200 (200-3/4)	
LNAV/VNAV DA		2841-7/8	250 (300-7/8)	
LNAV MDA		2920-1	329 (400-1)	
C CIRCLING	3040-1 444 (500-1)	3080-1 484 (500-1)	3320-2 724 (800-2)	3320-2 1/4 724 (800-2 1/4)

NC-2, 22 FEB 2024 to 21 MAR 2024

NC-2, 22 FEB 2024 to 21 MAR 2024

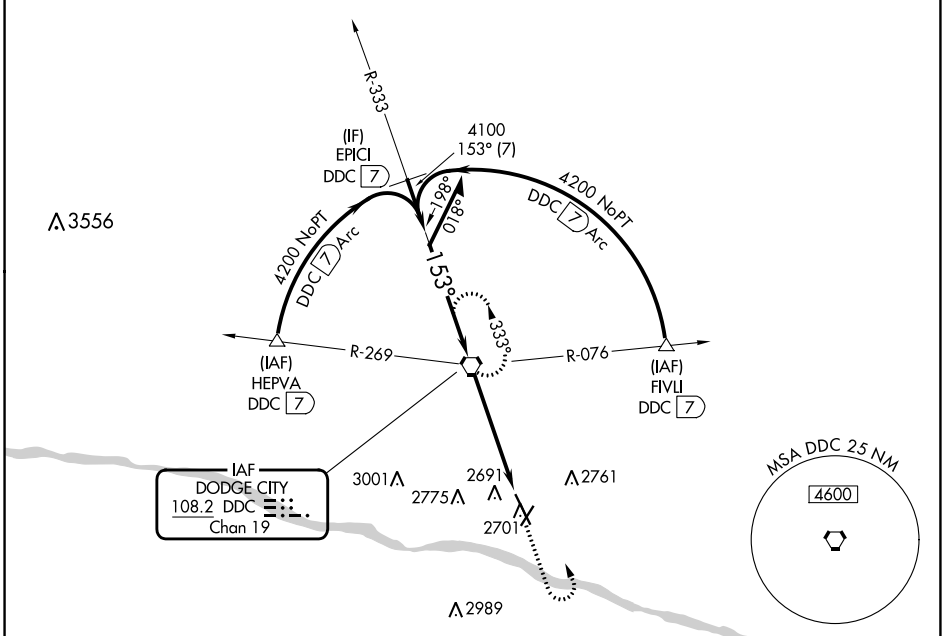
VORTAC DDC 108.2 Chan 19	APP CRS 153°	Rwy Idg TDZE Apt Elev	6329 2586 2596
---------------------------------------	------------------------	-----------------------------	---

VOR RWY 14

DODGE CITY RGNL (DDC)

		MISSED APPROACH: Climb to 4200 then left turn direct DDC VORTAC and hold.

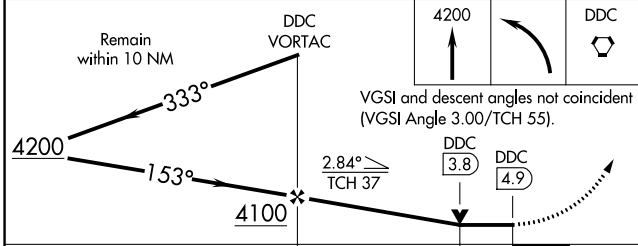
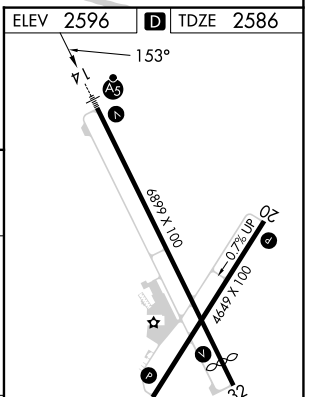
ASOS 118.525	KANSAS CITY CENTER 125.2 285.425	UNICOM 122.7 (CTAF) ①
------------------------	--	---------------------------------



NC-2, 22 FEB 2024 to 21 MAR 2024

NC-2, 22 FEB 2024 to 21 MAR 2024

ELEV 2596	TDZE 2586
-----------	-----------



CATEGORY	A	B	C	D
S-14	3000-1/2 414 (500-1/2)		3000-3/4 414 (500-3/4)	
CIRCLING	3040-1 444 (500-1)	3080-1 484 (500-1)	3320-2 724 (800-2)	3320-2 1/4 724 (800-2 1/4)

REIL Rwys 2, 20 and 32 ①	
MIRL Rwys 14-32 and 2-20 ①	
FAF to MAP 4.9 NM	
Knots	60 90 120 150 180
Min:Sec	4:54 3:16 2:27 1:58 1:38

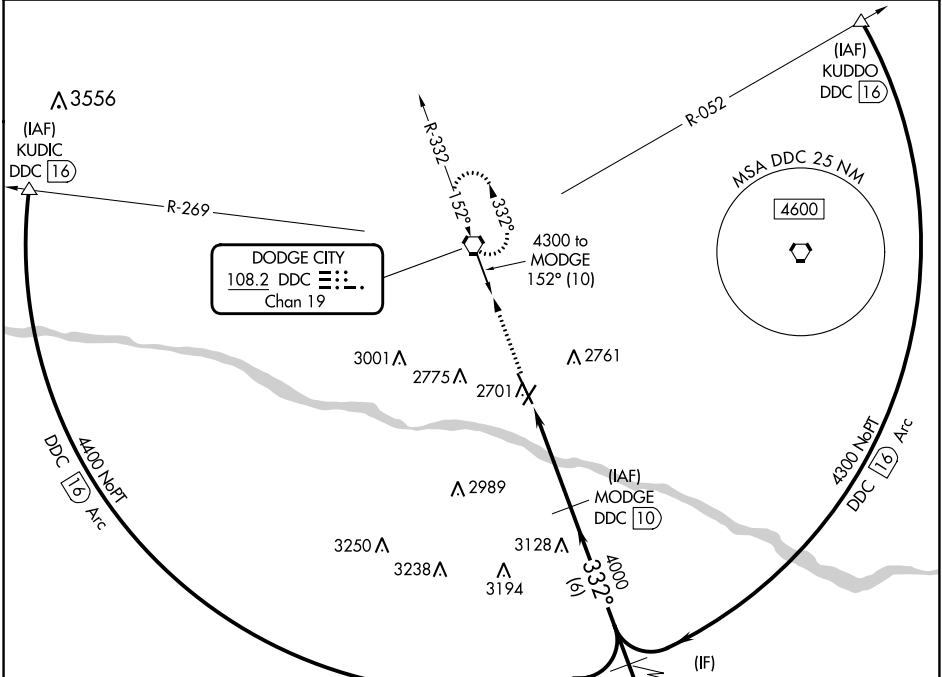
VORTAC DDC 108.2 Chan 19	APP CRS 332°	Rwy Idg TDZE Apt Elev	6329 2591 2596
---------------------------------------	------------------------	-----------------------------	---

VOR RWY 32

DODGE CITY RGNL (DDC)

DME required.	MISSED APPROACH: Climb to 4300 direct DDC VORTAC and hold, continue climb-in-hold to 4300
---------------	---

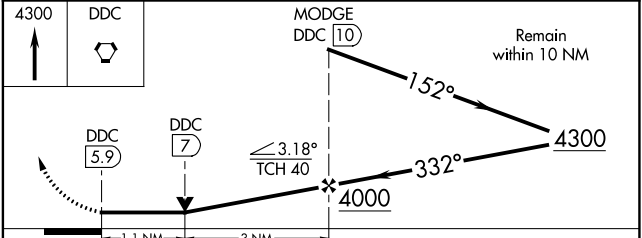
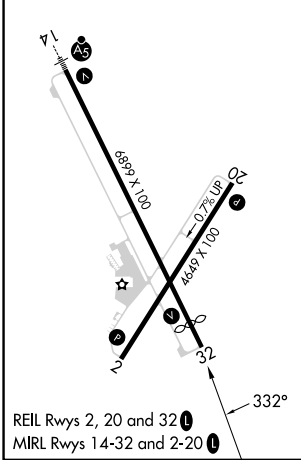
ASOS 118.525	KANSAS CITY CENTER 125.2 285.425	UNICOM 122.7 (CTAF) 0
------------------------	--	--



NC-2, 22 FEB 2024 to 21 MAR 2024

NC-2, 22 FEB 2024 to 21 MAR 2024

ELEV 2596	D	TDZE 2591
-----------	---	-----------



CATEGORY	A	B	C	D
S-32	2980-1	389 (400-1)	2980-1½	389 (400-1½)
CIRCLING	3040-1 444 (500-1)	3080-1 484 (500-1)	3320-2 724 (800-2)	3320-2¼ 724 (800-2¼)