

(CEGRM.CEGRM5) 20198
CEGRM FIVE ARRIVAL (RNAV)

CINCINNATI/NORTHERN KENTUCKY INTL (CVG)
 AL-655 (FAA) COVINGTON, KENTUCKY

CINCINNATI APP CON
 119.7 363.15 (090°-269°)
 123.875 363.15 (270°-089°)
 D-ATIS ARR 134.375

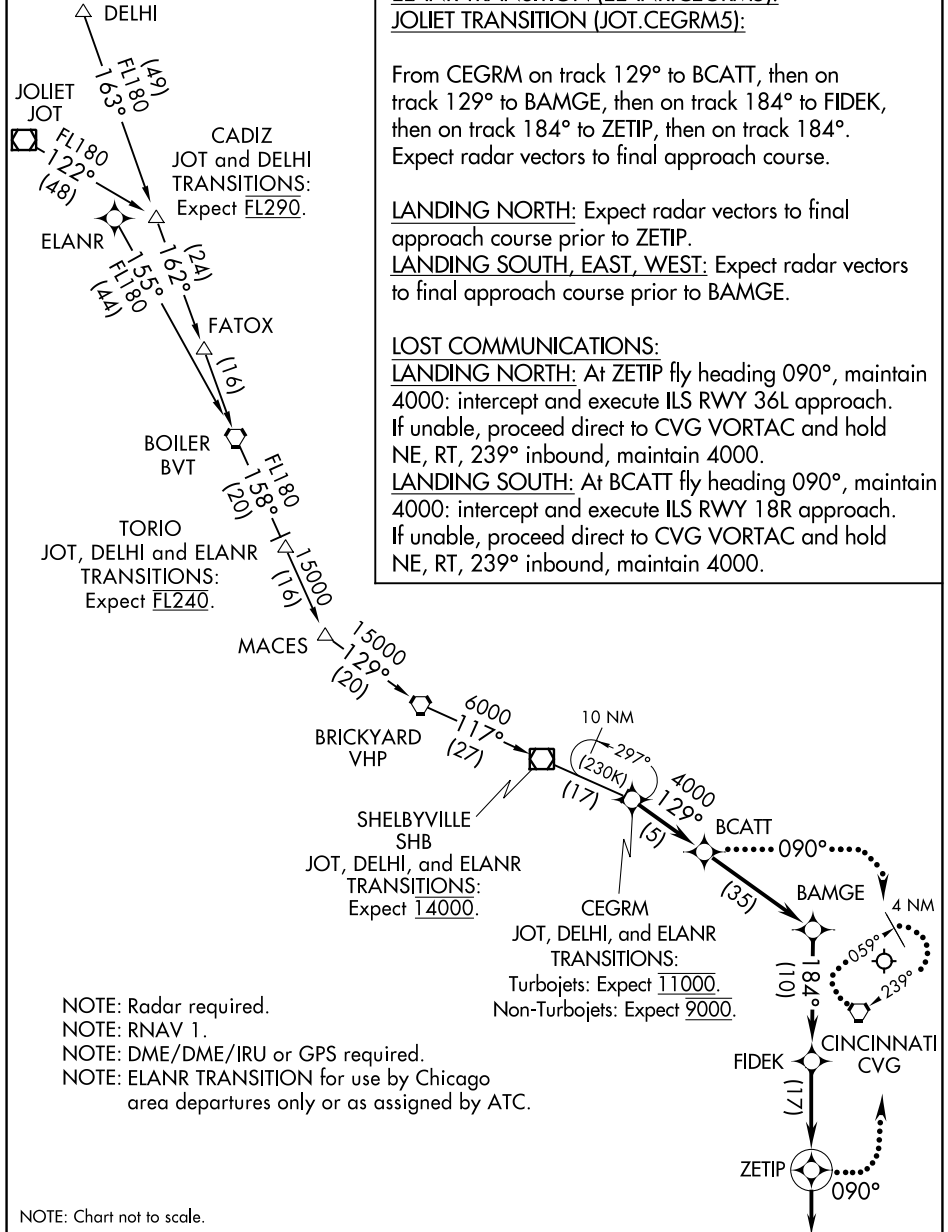
ARRIVAL ROUTE DESCRIPTION

DELHI TRANSITION (DELHI.CEGRM5):
ELANR TRANSITION (ELANR.CEGRM5):
JOLIET TRANSITION (JOT.CEGRM5):

From CEGRM on track 129° to BCATT, then on track 129° to BAMGE, then on track 184° to FIDEK, then on track 184° to ZETIP, then on track 184°.
 Expect radar vectors to final approach course.

LANDING NORTH: Expect radar vectors to final approach course prior to ZETIP.
LANDING SOUTH, EAST, WEST: Expect radar vectors to final approach course prior to BAMGE.

LOST COMMUNICATIONS:
LANDING NORTH: At ZETIP fly heading 090°, maintain 4000: intercept and execute ILS RWY 36L approach. If unable, proceed direct to CVG VORTAC and hold NE, RT, 239° inbound, maintain 4000.
LANDING SOUTH: At BCATT fly heading 090°, maintain 4000: intercept and execute ILS RWY 18R approach. If unable, proceed direct to CVG VORTAC and hold NE, RT, 239° inbound, maintain 4000.



NOTE: Radar required.
 NOTE: RNAV 1.
 NOTE: DME/DME/IRU or GPS required.
 NOTE: ELANR TRANSITION for use by Chicago area departures only or as assigned by ATC.

NOTE: Chart not to scale.

CEGRM FIVE ARRIVAL (RNAV)
(CEGRM.CEGRM5) 29MAR18

COVINGTON, KENTUCKY
 CINCINNATI/NORTHERN KENTUCKY INTL (CVG)

SE-1, 22 FEB 2024 to 21 MAR 2024

SE-1, 22 FEB 2024 to 21 MAR 2024

CINCINNATI APP CON
123.875 254.25
CVG D-ATIS ARR
134.375
LUK ATIS
123.6

CINCINNATI, OHIO

(TIGRR, CINC9) 05DEC19

CINCINNATI, OHIO

ROSEWOOD
117.5 ROD
Chan 122

APPLETON
116.7 APE
Chan 114

CHARZ
VERTICAL PLANNING
INFORMATION
All aircraft landing LUK expect
4000 or 6000.



BUTLER COUNTY
RGNL/HOGAN FLD

CINCINNATI
117.3 CVG
Chan 120

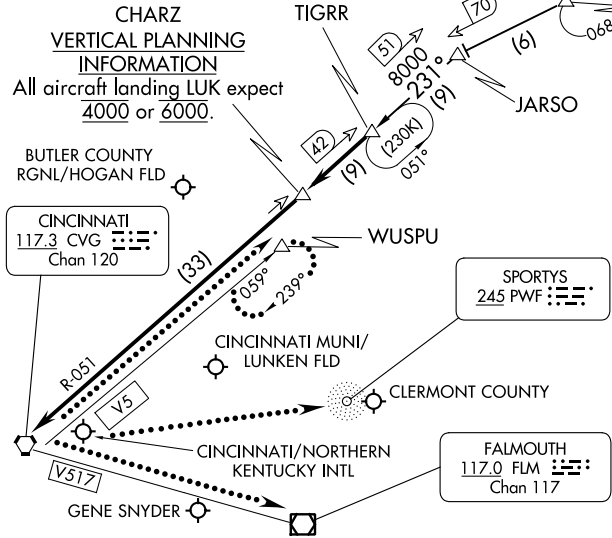
CINCINNATI MUNI/
LUNKEN FLD

CINCINNATI/NORTHERN
KENTUCKY INTL

GENE SNYDER

SPORTYS
245 PWF
Chan 117

FALMOUTH
117.0 FLM
Chan 117



NOTE: RADAR required.
NOTE: DME required.
NOTE: APE TRANSITION - Only for use
by overseas flights, or, aircraft from the
Cleveland/Akron-Canton/Pittsburgh
terminal areas with filed altitudes FL220.

NOTE: Chart not to scale.

APPLETON TRANSITION (APE.CINC9): From over APE VORTAC on APE R-248 to JARSO, then on CVG R-051 to TIGRR. Thence...
...from over TIGRR on CVG R-051 to CVG VORTAC.
Expect vectors to final approach course after TIGRR.

LOST COMMUNICATIONS:
For LUK: At CVG VORTAC, proceed on V5 to WUSPU and hold, maintain 4000.
For I69: At CVG VORTAC, proceed to SPORTYS (PWF) maintain 4000 until SPORTYS (PWF).
For K62: At CVG VORTAC, proceed on V517 to FLM VOR/DME, maintain 3000 until FLM VOR/DME.

(TIGRR, CINC9) 24025

AL-655 (FAA)

CINCINNATI, OHIO

GAVNN SIX ARRIVAL (RNAV)
(GAVNN, GAVNN6) 17JUN21

CINCINNATI APP CON
119.7 363.15 (090°-269°)
123.875 363.15 (270°-089°)
D-ATIS ARR
134.375

COLNS TRANSITION (COLNS.GAVNN6):
HENDERSON TRANSITION (HNN.GAVNN6):

From GAVNN on track 310° to KNEDY, then on track 310° to AAJAY, then on track 006° to BACAS, then on track 006° to OGIRE.

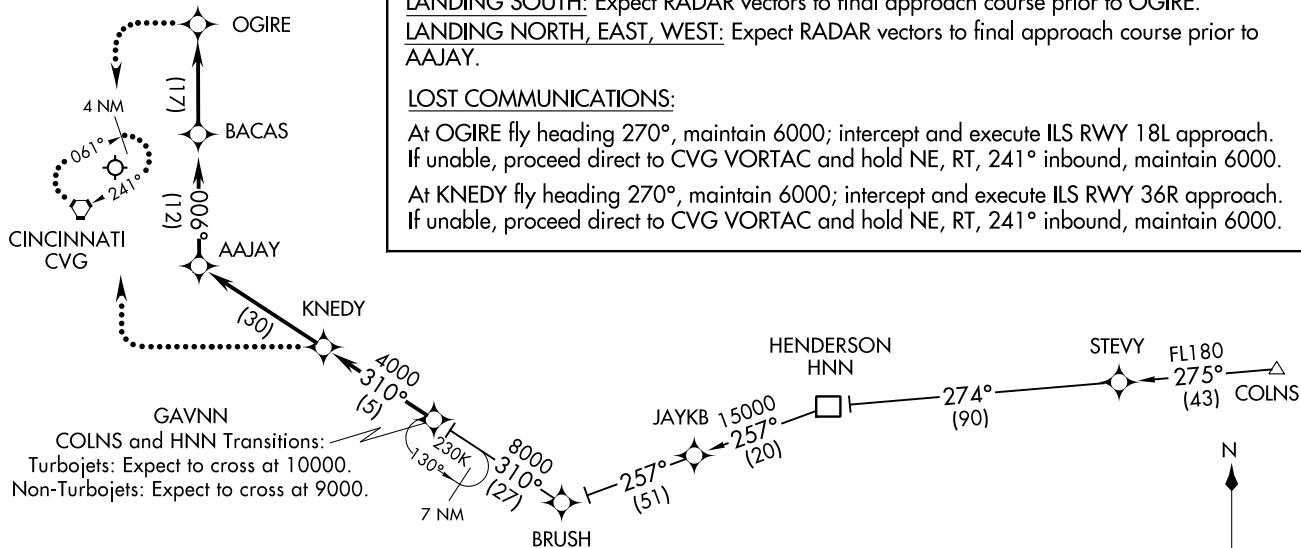
LANDING SOUTH: Expect RADAR vectors to final approach course prior to OGIRE.

LANDING NORTH, EAST, WEST: Expect RADAR vectors to final approach course prior to AAJAY.

LOST COMMUNICATIONS:

At OGIRE fly heading 270°, maintain 6000; intercept and execute ILS RWY 18L approach. If unable, proceed direct to CVG VORTAC and hold NE, RT, 241° inbound, maintain 6000.

At KNEDY fly heading 270°, maintain 6000; intercept and execute ILS RWY 36R approach. If unable, proceed direct to CVG VORTAC and hold NE, RT, 241° inbound, maintain 6000.



GAVNN
COLNS and HNN Transitions:
Turbojets: Expect to cross at 10000.
Non-Turbojets: Expect to cross at 9000.

- NOTE: RADAR required.
- NOTE: RNAV 1.
- NOTE: DME/DME/IRU or GPS required.

NOTE: Chart not to scale.

(GAVNN, GAVNN6) 21168
GAVNN SIX ARRIVAL (RNAV)

CINCINNATI/NORTHERN KENTUCKY INTL (CTG)
AL-655 (FAA)
COVINGTON, KENTUCKY

CINCINNATI/NORTHERN KENTUCKY INTL (CTG)
COVINGTON, KENTUCKY

HARDU FIVE ARRIVAL

CINCINNATI APP CON
 119.7 363.15 (090°-269°)
 123.875 363.15 (270°-089°)
 CVG D-ATIS ARR
 134.375
 LUK ATIS
 123.6

BUTLER COUNTY
 RGNL/HOGAN FLD

WUSPU

SPORTYS
 245 PWF

CINCINNATI/
 NORTHERN
 KENTUCKY INTL

CINCINNATI MUNI/
 LUNKEN FLD

CINCINNATI
 117.3 CVG
 Chan 120

CLERMONT COUNTY

R-204
 V517

GENE SNYDER

ZETLA

4000
 314°
 (26)

NOTE: RADAR required.
 NOTE: DME required.

FALMOUTH
 117.0 FLM
 Chan 117

R-154 (15)
 9000
 JAKIE

LEXINGTON
 112.6 HYK
 Chan 73

R-028
 R-107
 334°
 (45)

HARDU

TAYOS

15000
 334°
 (10)
 (20)

011°
 (19)

CHEDA

191°
 (80)
 (90)
 (55)

PACKO

FL180
 311°
 (35)

ARTUR

R-279
 R-050

VOLUNTEER
 116.4 VXV
 Chan 111

HOLSTON MOUNTAIN
 114.6 HMV
 Chan 93

FL180
 011°
 (38)

NOTE: Chart not to scale.

(CONTINUED ON FOLLOWING PAGE)

HARDU FIVE ARRIVAL

SE-1, 22 FEB 2024 to 21 MAR 2024

SE-1, 22 FEB 2024 to 21 MAR 2024

ARRIVAL ROUTE DESCRIPTION

HOLSTON MOUNTAIN TRANSITION (HMV.HARDU5): From over HMV VORTAC on HMV R-311 to CHEDA, then on VXV R-011 to TAYOS, then on FLM R-154 to HARDU. Thence . . .

VOLUNTEER TRANSITION (VXV.HARDU5): From over VXV VORTAC on VXV R-011 to TAYOS, then on FLM R-154 to HARDU. Thence . . .

. . . from over HARDU on FLM VOR/DME R-154 to FLM VOR/DME, then FLM R-314 to ZETLA. Expect vectors to final approach course after JAKIE.

LOST COMMUNICATIONS

For LUK: At ZETLA, proceed to CVG VORTAC then on V5 to WUSPU and hold, maintain 4000.

For HAO: At ZETLA, proceed to CVG VORTAC. Maintain 3000 until CVG VORTAC.

For I69: At ZETLA, proceed to CVG VORTAC then to SPORTYS (PWF). Maintain 4000 until SPORTYS (PWF).

For K62: At ZETLA, proceed to CVG VORTAC then on V517 to FLM VOR/DME. Maintain 3000 until FLM VOR/DME.

SE-1, 22 FEB 2024 to 21 MAR 2024

SE-1, 22 FEB 2024 to 21 MAR 2024

JAKIE FIVE ARRIVAL (RNAV)

D-ATIS ARR

134.375

CINCINNATI APP CON

119.7 254.25

ARRIVAL ROUTE DESCRIPTION

ARTUR TRANSITION (ARTUR.JAKIE5):

CUBIM TRANSITION (CUBIM.JAKIE5):

DOLLI TRANSITION (DOLLI.JAKIE5):

VOLUNTEER TRANSITION (VXV.JAKIE5):

From JAKIE on track 336° to FLM VOR/DME, then on track 317° to FIDEK, then on track 006° to BAMGE, then on track 006° to AGEBE.

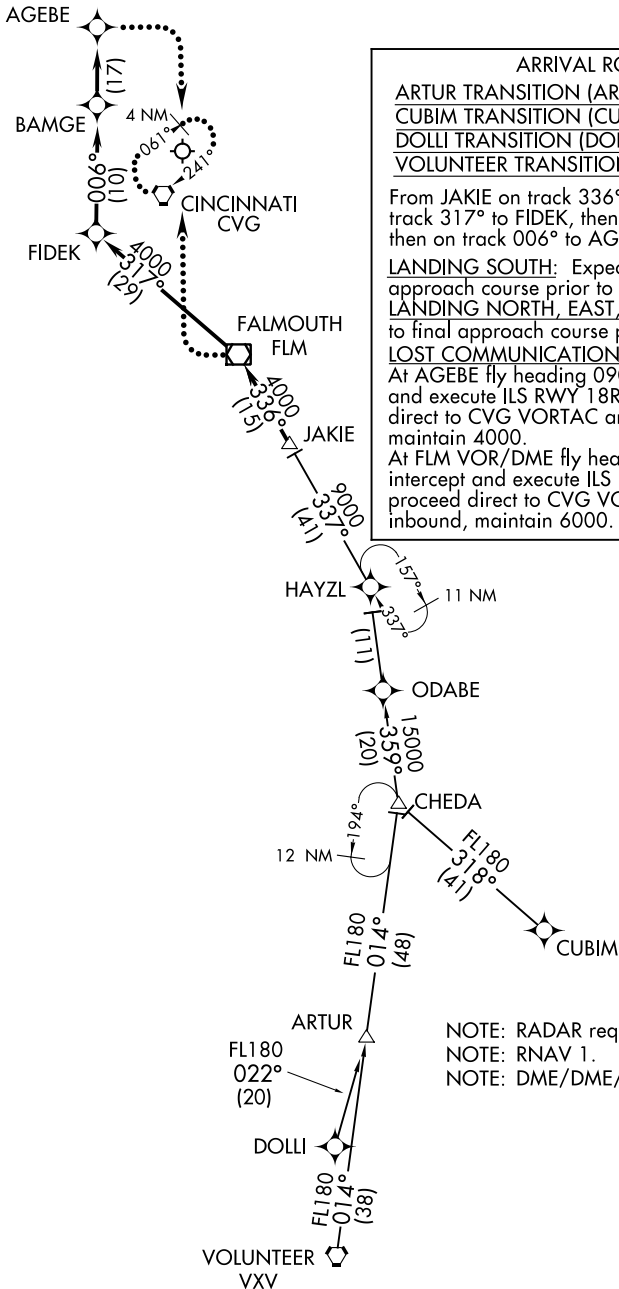
LANDING SOUTH: Expect RADAR vectors to final approach course prior to AGEBE.

LANDING NORTH, EAST, WEST: Expect RADAR vectors to final approach course prior to FIDEK.

LOST COMMUNICATIONS:

At AGEBE fly heading 090°, maintain 4000; intercept and execute ILS RWY 18R approach. If unable, proceed direct to CVG VORTAC and hold NE, RT, 241° inbound, maintain 4000.

At FLM VOR/DME fly heading 270°, maintain 6000; intercept and execute ILS RWY 36R approach. If unable, proceed direct to CVG VORTAC and hold NE, RT, 241° inbound, maintain 6000.



NOTE: RADAR required.
NOTE: RNAV 1.
NOTE: DME/DME/IRU or GPS required.

NOTE: Chart not to scale.

JAKIE FIVE ARRIVAL (RNAV)

SE-1, 22 FEB 2024 to 21 MAR 2024

SE-1, 22 FEB 2024 to 21 MAR 2024

SARGO THREE ARRIVAL (RNAV)
 (SARGO.SARGO3) 24JUL14

CINCINNATI/NORTHERN KENTUCKY INTL (CVG)
 COVINGTON, KENTUCKY

CINCINNATI APP CON
 119.7 363.15 (090°-269°)
 123.875 363.15 (270°-089°)
 D-ATIS ARR
 134.375



CENTRALIA TRANSITION (ENL.SARGO3):
POCKET CITY TRANSITION (PXV.SARGO3):

From over SARGO on track 065° to TYOTA, then on track 065° to FIDEK, then on track 004° to BAMGE, then on track 004° to AGEBE, then on heading 004°. Expect radar vectors to final approach course.

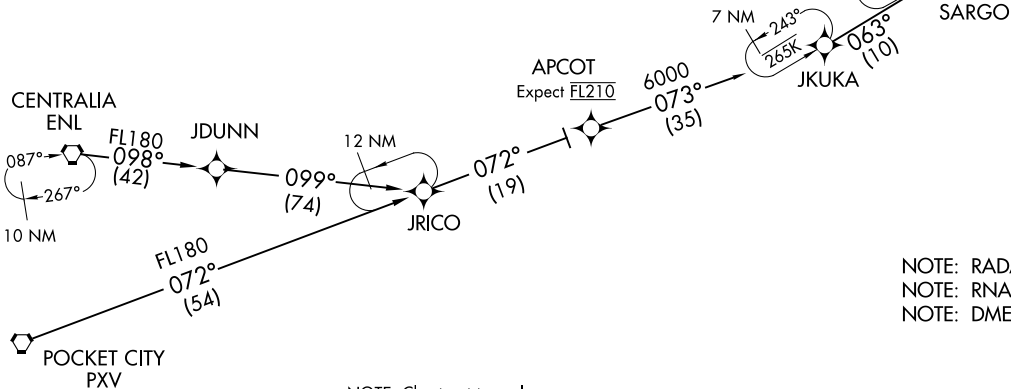
Landing South: Expect radar vectors to final approach course prior to AGEBE.

Landing East, West, North: Expect radar vectors to final approach course after FIDEK.

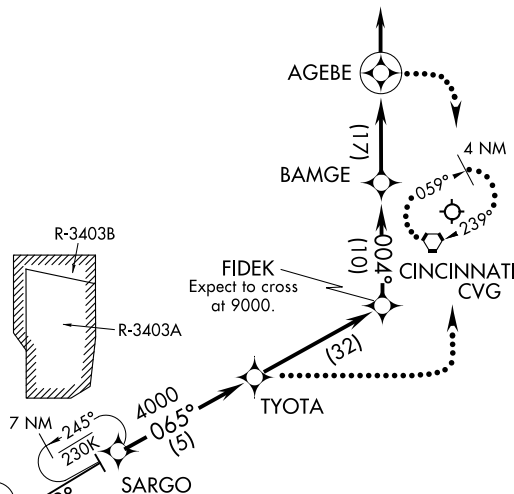
LOST COMMUNICATIONS:

At AGEBE fly heading 090°, maintain 4000; intercept and execute ILS RWY 18R approach. If unable, proceed direct to CVG VORTAC and hold, NE, RT, 239° inbound, maintain 4000.

At TYOTA fly heading 090°, maintain 4000; intercept and execute ILS RWY 36L approach. If unable, proceed direct to CVG VORTAC and hold, NE, RT, 239° inbound, maintain 4000.



NOTE: Chart not to scale.



NOTE: RADAR required.
 NOTE: RNAV 1.
 NOTE: DME/DME/IRU or GPS required.

(SARGO.SARGO3) 20198
SARGO THREE ARRIVAL (RNAV)
 AL-655 (FAA)

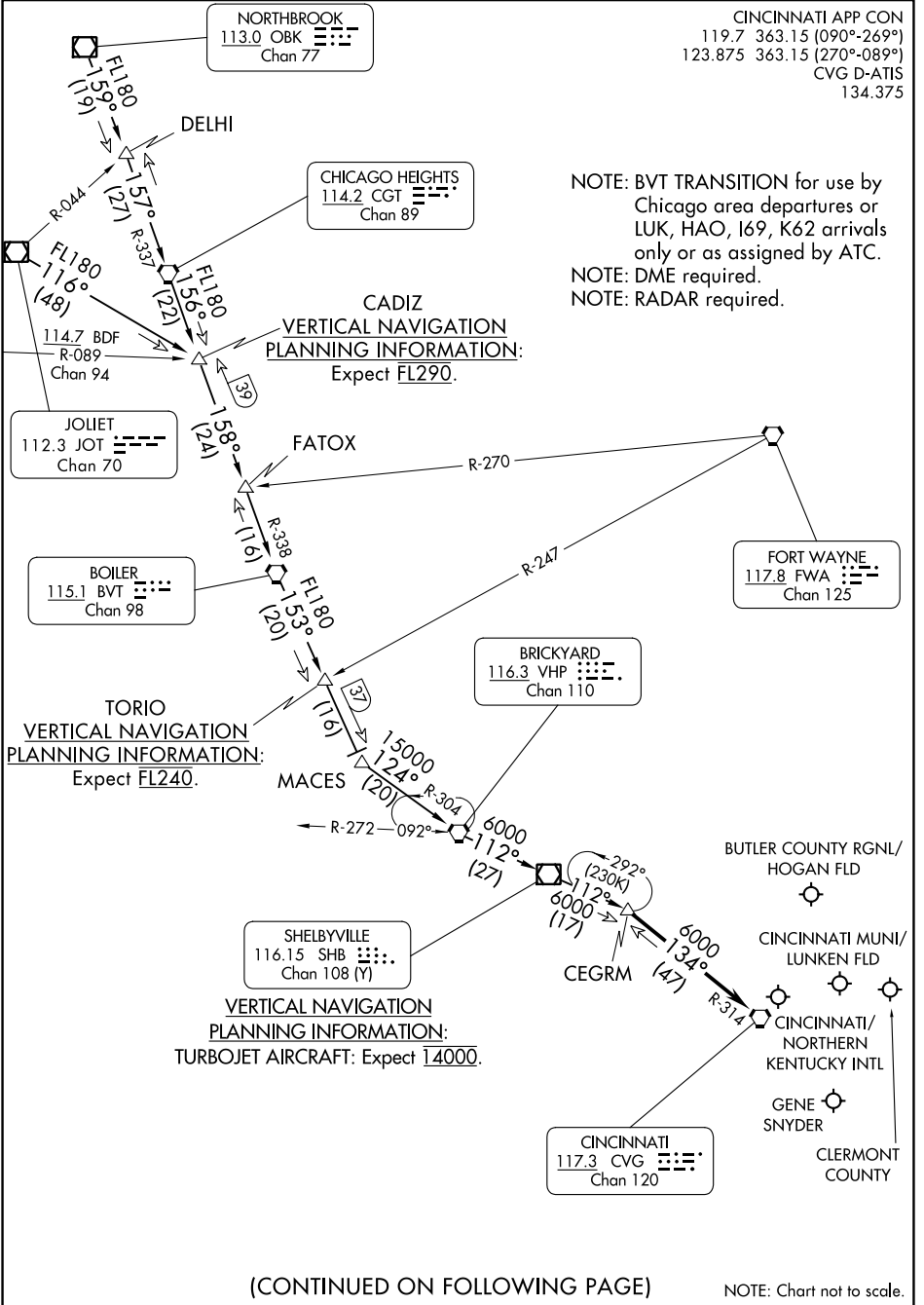
CINCINNATI/NORTHERN KENTUCKY INTL (CVG)
 COVINGTON, KENTUCKY

SHELBYVILLE SIX ARRIVAL

AL-655 (FAA)

COVINGTON, KENTUCKY

CINCINNATI APP CON
 119.7 363.15 (090°-269°)
 123.875 363.15 (270°-089°)
 CVG D-ATIS
 134.375



NOTE: BVT TRANSITION for use by Chicago area departures or LUK, HAO, I69, K62 arrivals only or as assigned by ATC.
 NOTE: DME required.
 NOTE: RADAR required.

TORIO
VERTICAL NAVIGATION
 PLANNING INFORMATION:
 Expect FL240.

CADIZ
VERTICAL NAVIGATION
 PLANNING INFORMATION:
 Expect FL290.

SHELBYVILLE
VERTICAL NAVIGATION
 PLANNING INFORMATION:
 TURBOJET AIRCRAFT: Expect 14000.

(CONTINUED ON FOLLOWING PAGE)

NOTE: Chart not to scale.

SE-1, 22 FEB 2024 to 21 MAR 2024

SE-1, 22 FEB 2024 to 21 MAR 2024

SHELBYVILLE SIX ARRIVAL

COVINGTON, KENTUCKY

ARRIVAL ROUTE DESCRIPTION

BOILER TRANSITION (BVT.SHB6): From over BVT VORTAC on BVT R-153 to MACES, then on VHP R-304 to VHP VORTAC, then on VHP R-112 to SHB VOR/DME, then on SHB R-112 to CEGRM, thence....

JOLIET TRANSITION (JOT.SHB6): From over JOT VOR/DME on JOT R-116 to CADIZ, then on BVT R-338 to BVT VORTAC, then on BVT R-153 to MACES, then on VHP R-304 to VHP VORTAC, then on VHP R-112 to SHB VOR/DME, then on SHB R-112 to CEGRM, thence....

NORTHBROOK TRANSITION (OBK.SHB6): From over OBK VOR/DME on OBK R-159 to DELHI, then on CGT R-337 to CGT VORTAC, then on CGT R-156 to CADIZ, then on BVT R-338 to BVT VORTAC, then on BVT R-153 to MACES, then on VHP R-304 to VHP VORTAC, then on VHP R-112 to SHB VOR/DME, then on SHB R-112 to CEGRM, thence....

....from over CEGRM on CVG R-314 to CVG VORTAC. Expect RADAR vectors to final approach course after CEGRM.

SE-1, 22 FEB 2024 to 21 MAR 2024

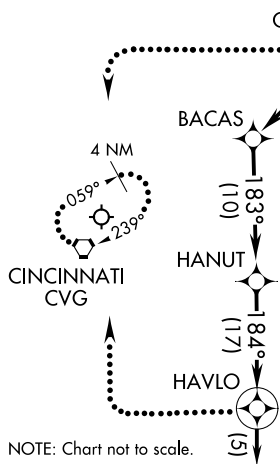
SE-1, 22 FEB 2024 to 21 MAR 2024

TIGRR THREE ARRIVAL (RNAV)
(TIGRR, TIGRR3) 16JUL20

CINCINNATI APP CON
119.7 363.15 (090°-269°)
123.875 363.15 (270°-089°)
D-ATIS ARR
134.375

- NOTE: RADAR required.
- NOTE: RNAV 1.
- NOTE: DME/DME/IRU or GPS required.
- NOTE: APE transition only for use by overseas flights or aircraft from the Cleveland/Akron-Canton/Pittsburgh terminal areas with filed altitudes at or below FL240.

TIGRR
CTW and APE Transitions:
Turbojets: Expect to cross at 11000.
Non-Turbojets: Expect to cross at 9000.



NOTE: Chart not to scale.

APPLETON TRANSITION (APE.TIGRR3):
NEWCOMERSTOWN TRANSITION (CTW.TIGRR3):

From over TIGRR on track 231° to CHARZ, thence as depicted to HAVLO.

Landing South, East, West: Expect RADAR vectors to final approach course prior to BACAS.

Landing North: Expect RADAR vectors to final approach course prior to HAVLO.

LOST COMMUNICATIONS:

At HAVLO fly heading 270°, maintain 6000, intercept and execute ILS RWY 36R approach. If unable, proceed direct to CVG VORTAC and hold, NE, RT, 239° inbound, maintain 6000.

At CHARZ fly heading 270°, maintain 6000, intercept and execute ILS RWY 18L approach. If unable, proceed direct to CVG VORTAC and hold, NE, RT, 239° inbound, maintain 6000.

(TIGRR, TIGRR3) 20310
TIGRR THREE ARRIVAL (RNAV)

CINCINNATI/NORTHERN KENTUCKY INTL (CVG)
AL-655 (FAA)
COVINGTON, KENTUCKY