

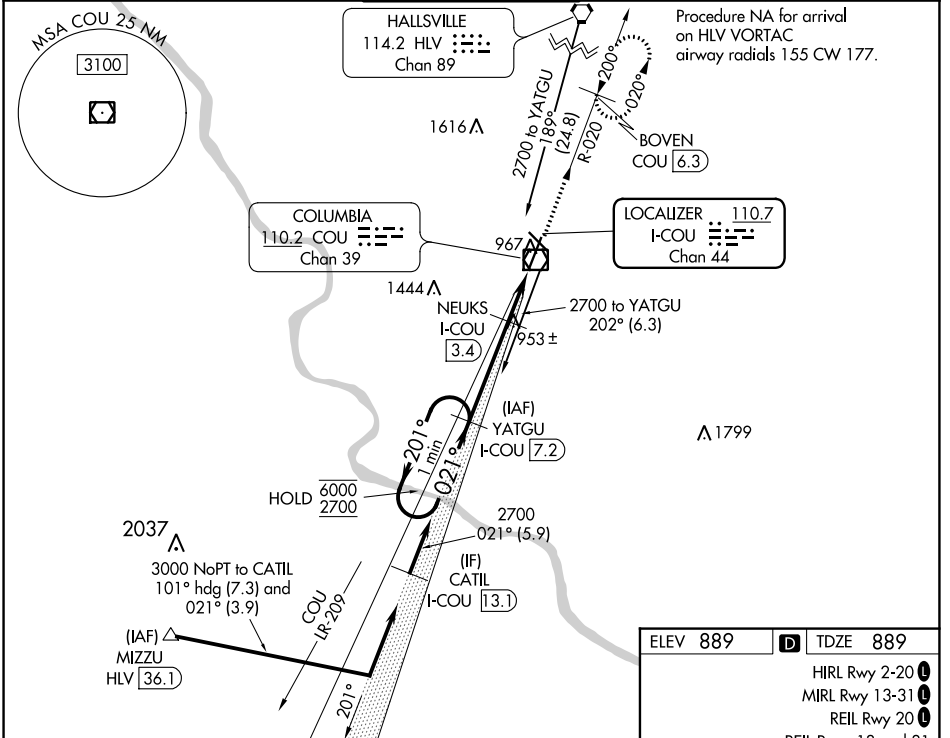
LOC/DME I-COU 110.7 Chan 44	APP CRS 021°	Rwy Idg 7401 TDZE 889 Apt Elev 889
---	------------------------	---

ILS or LOC RWY 2

COLUMBIA RGNL (COU)

DME required.	MALSR	MISSED APPROACH: Climb to 2700 on COU VOR/DME R-020 to BOVEN/COU 6.3 DME and hold, continue climb-in-hold to 2700.
<p>▼ Circling NA for Cat D west of Rws 2 and 13.</p> <p>▲ *RVR 1800 authorized with use of FD or AP or HUD to DA.</p>		

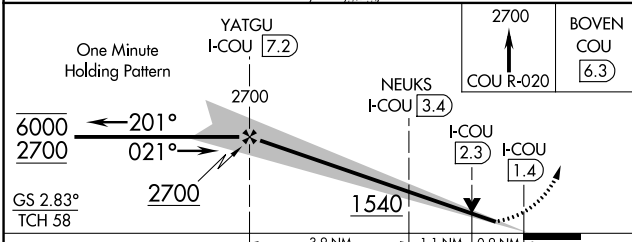
ATIS 128.45	MIZZU APP CON 124.375 353.925	COLUMBIA TOWER * 119.3 (CTAF) 363.25	GND CON 121.6	UNICOM 122.95
-----------------------	---	--	-------------------------	-------------------------



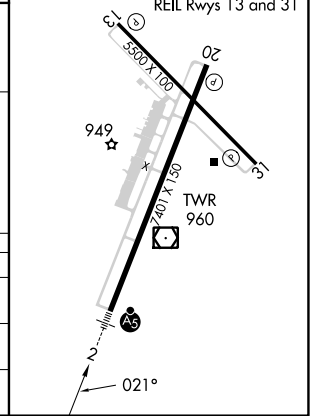
NC-3, 22 FEB 2024 to 21 MAR 2024

NC-3, 22 FEB 2024 to 21 MAR 2024

ELEV 889	TDZE 889
HIRL Rwy 2-20	MIRL Rwy 13-31
REIL Rwy 20	REIL Rws 13 and 31



CATEGORY	A	B	C	D
S-ILS 2*	1089/24		200 (200-½)	
S-LOC 2	1220/24	331 (400-½)	1220/26	331 (400-½)
CIRCLING	1280-1 391 (400-1)	1340-1 451 (500-1)	1360-1½ 471 (500-1½)	1440-2 551 (600-2)



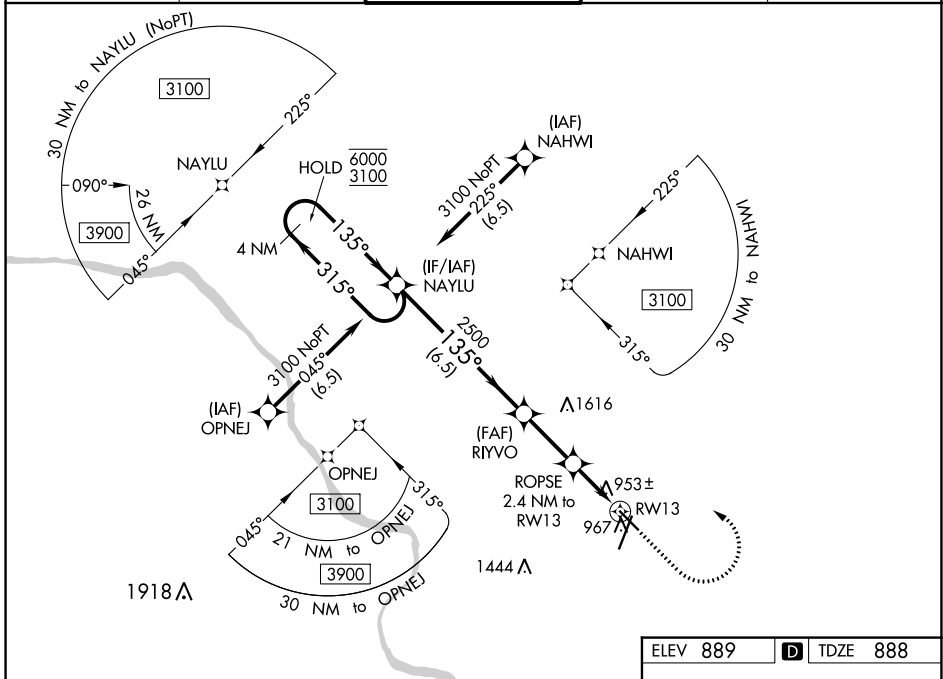
WAAS CH 40042 W13A	APP CRS 135°	Rwy Idg TDZE Apt Elev	5500 888 889
---------------------------------	------------------------	-----------------------------	---

RNAV (GPS) RWY 13

COLUMBIA RGNL (COU)

RNP APCH.	MISSED APPROACH: Climb to 2000 then climbing left turn to 3100 direct NAYLU and hold.
<p>⚠ Circling NA for Cat D west of Rws 2 and 13. Circling Rwy 20 NA at night. For uncompensated Baro-VNAV systems, LNAV/VNAV NA below -17°C or above 54°C.</p>	

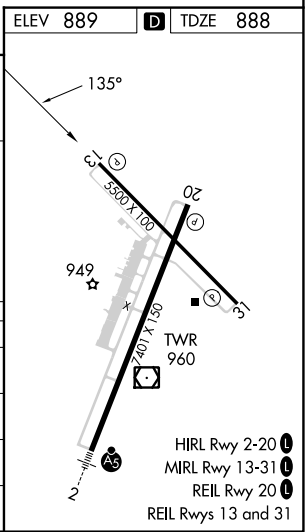
ATIS 128.45	MIZZO APP CON 124.375 353.925	COLUMBIA TOWER * 119.3 (CTAF) 363.25	GND CON 121.6	UNICOM 122.95
-----------------------	---	---	-------------------------	-------------------------



NC-3, 22 FEB 2024 to 21 MAR 2024

NC-3, 22 FEB 2024 to 21 MAR 2024

4 NM Holding Pattern	NAYLU	RYVVO	2000	3100	NAYLU
6000 ← 315°	3100 → 135°	2500	↑	↻	✧
GP 3.00°	TCH 45	ROPSE 2.4 NM to RW13	*LNAV only		
		*0.9 NM to RW13			
		*1680			
		6.5 NM	2.5 NM	1.5 NM	0.9
CATEGORY	A	B	C	D	
LPV DA		1139-1	251 (300-1)		
LNAV/VNAV DA		1139-1	251 (300-1)		
LNAV MDA		1220-1	332 (400-1)		
C CIRCLING	1300-1 411 (500-1)	1340-1 451 (500-1)	1360-1½ 471 (500-1½)	1440-2 551 (600-2)	



WAAS CH 77599 W02A	APP CRS 021°	Rwy Idg TDZE Apt Elev	7401 889 889
--	------------------------	-----------------------------	---


RNAV (GPS) RWY 2

COLUMBIA RGNL (COT)

RNP APCH-GPS.

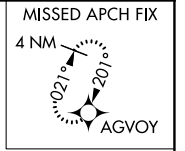
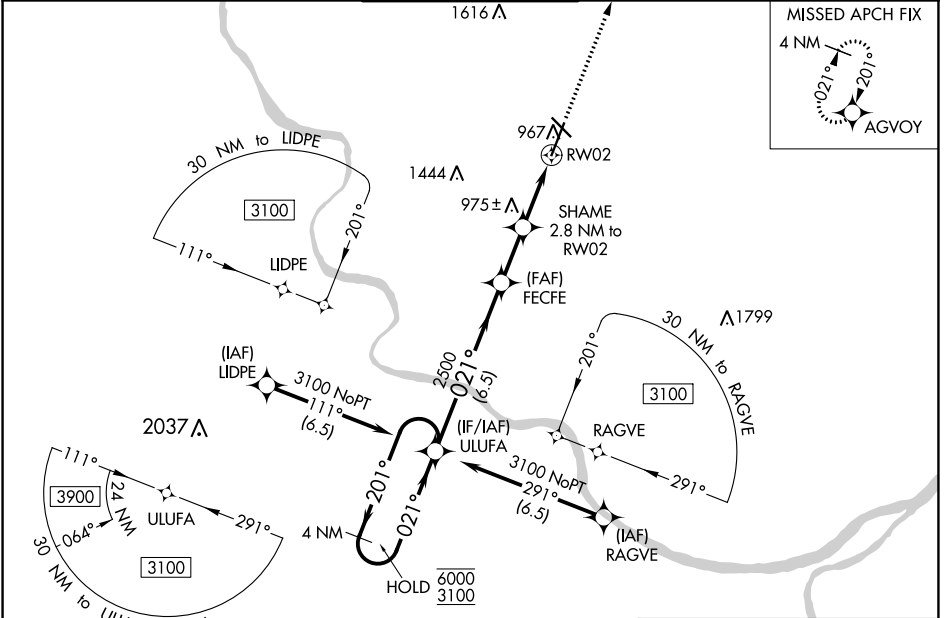
⚠ Circling NA for Cat D west of Rwy 2 and 13. For uncompensated Baro-VNAV systems, LNAV/VNAV NA below -16°C or above 54°C. For inop ALS, increase LNAV/VNAV all Cats visibility to RVR 4000 and increase LNAV Cat C/D visibility to RVR 5500.
*RVR 1800 authorized with the use of FD or AP or HUD to DA.

MALSRL

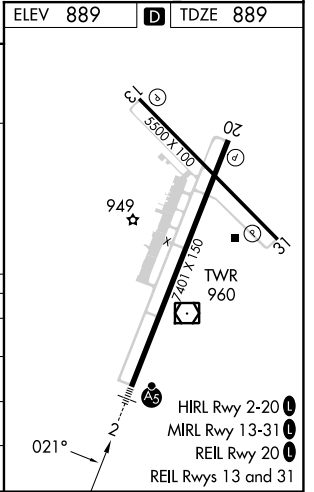
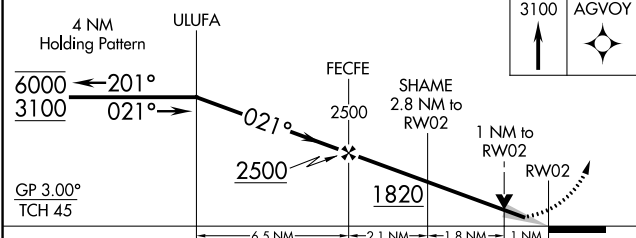


MISSED APPROACH: Climb to 3100 direct AGVOY and hold.

ATIS 128.45	MIZZU APP CON 124.375 353.925	COLUMBIA TOWER * 119.3 (CTAF) 363.25	GND CON 121.6	UNICOM 122.95
-----------------------	---	---	-------------------------	-------------------------



ELEV 889	D TDZE 889
----------	-------------------



CATEGORY	A	B	C	D
LPV DA*	1089/24		200 (200-½)	
LNAV/VNAV DA	1143/24		254 (300-½)	
LNAV MDA	1240/24	351 (400-½)	1240/30	351 (400-¾)
C CIRCLING	1280-1 391 (400-1)	1340-1 451 (500-1)	1360-1½ 471 (500-1½)	1440-2 551 (600-2)

NC-3, 22 FEB 2024 to 21 MAR 2024

NC-3, 22 FEB 2024 to 21 MAR 2024

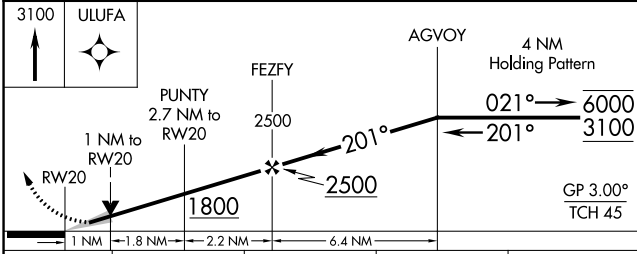
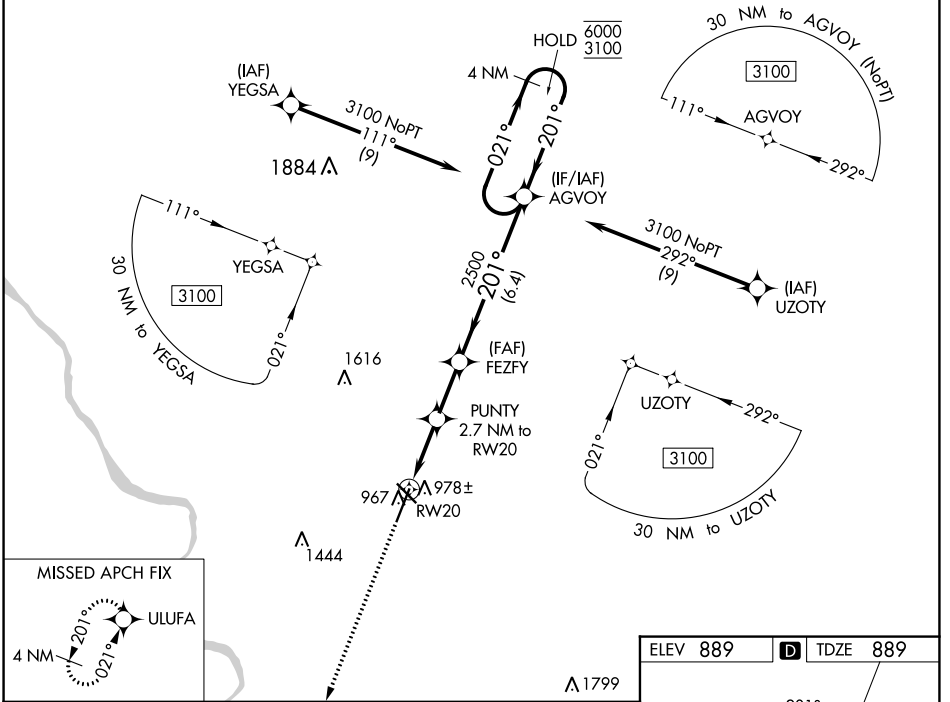
WAAS CH 93599 W20A	APP CRS 201°	Rwy Idg TDZE Apt Elev	7401 889 889
--	------------------------	-----------------------------	---

RNAV (GPS) RWY 20

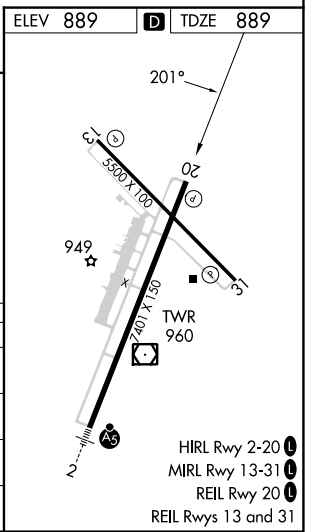
COLUMBIA RGNL (COU)

RNP APCH - GPS.		COLUMBIA TOWER ★		GND CON	UNICOM
Circling NA for Cat D west of Rwy 2 and 13. For uncompensated Baro-VNAV systems, LNAV/VNAV NA below -16°C or above 54°C.		119.3 (CTAF) 363.25		121.6	122.95
ATIS	MIZZO APP CON				
128.45	124.375 353.925				

MISSED APPROACH: Climb to 3100 direct ULUFA and hold.



CATEGORY	A	B	C	D
LPV DA		1139-3/4	250 (300-3/4)	
LNAV/VNAV DA		1139-3/4	250 (300-3/4)	
LNAV MDA		1240-1	351 (400-1)	
CIRCLING	1280-1 391 (400-1)	1340-1 451 (500-1)	1360-1 1/2 471 (500-1 1/2)	1440-2 551 (600-2)



NC-3, 22 FEB 2024 to 21 MAR 2024

NC-3, 22 FEB 2024 to 21 MAR 2024

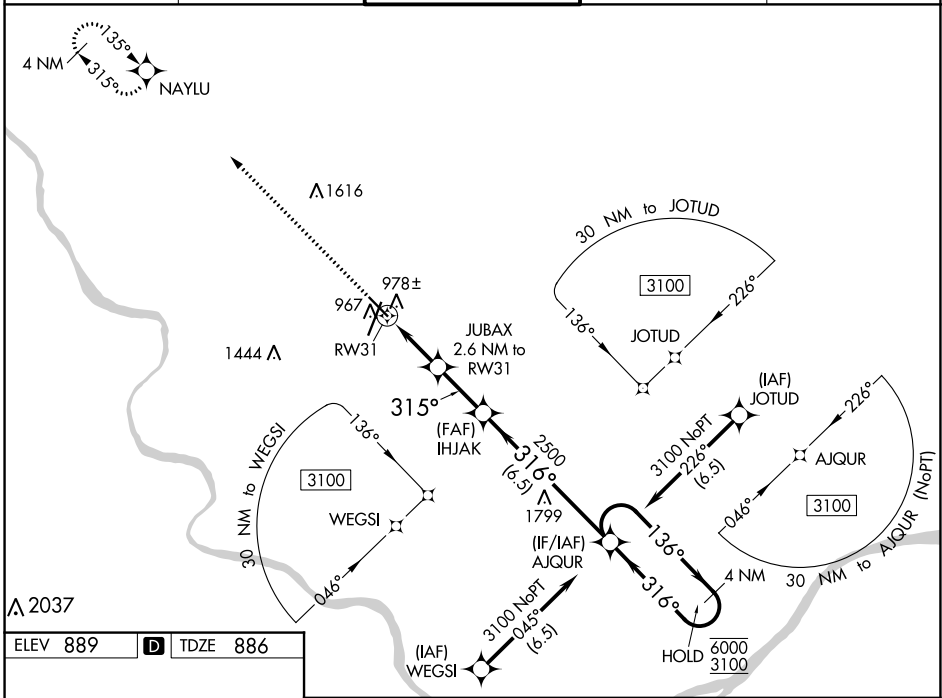
WAAS CH 86242 W31A	APP CRS 315°	Rwy Idg TDZE Apt Elev	5500 886 889
--	------------------------	-----------------------------	---

RNAV (GPS) RWY 31

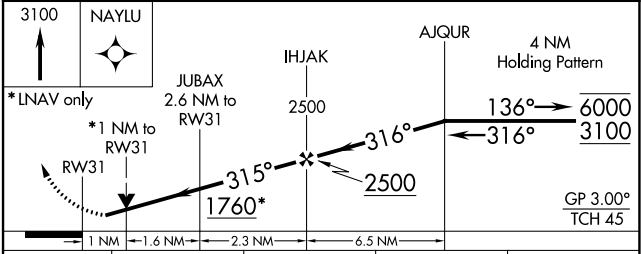
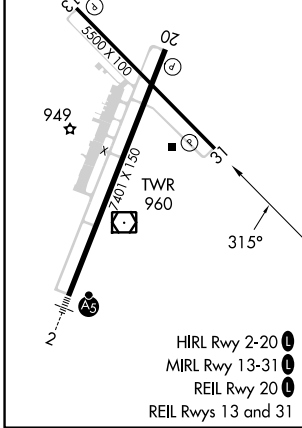
COLUMBIA RGNL (COU)

RNP APCH.	MISSED APPROACH: Climb to 3100 direct NAYLU and hold.
<p>⚠ Circling Rwy 20 NA at night. Rwy 31 helicopter visibility reduction below 3/4 SM NA. For uncompensated Baro-VNAV systems, LNAV/VNAV NA below -17°C or above 54°C. Circling NA for Cat D west of Rwy 2 and 13.</p>	

ATIS 128.45	MIZZO APP CON 124.375 353.925	COLUMBIA TOWER * 119.3 (CTAF) 363.25	GND CON 121.6	UNICOM 122.95
-----------------------	---	--	-------------------------	-------------------------



ELEV 889	D	TDZE 886
----------	----------	----------



CATEGORY	A	B	C	D
LPV DA		1138-1	252 (300-1)	
LNAV/VNAV DA		1138-1	252 (300-1)	
LNAV MDA		1240-1	354 (400-1)	
C CIRCLING	1300-1 411 (500-1)	1340-1 451 (500-1)	1360-1½ 471 (500-1½)	1440-2 551 (600-2)

NC-3, 22 FEB 2024 to 21 MAR 2024

NC-3, 22 FEB 2024 to 21 MAR 2024

VOR/DME COU 110.2 Chan 39	APP CRS 153°	Rwy Idg 5500 TDZE 888 Apt Elev 889
---	------------------------	---

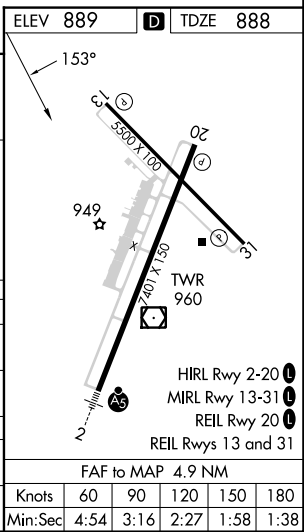
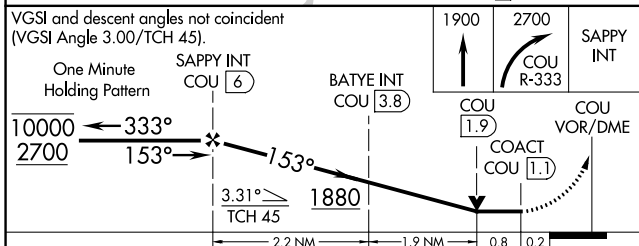
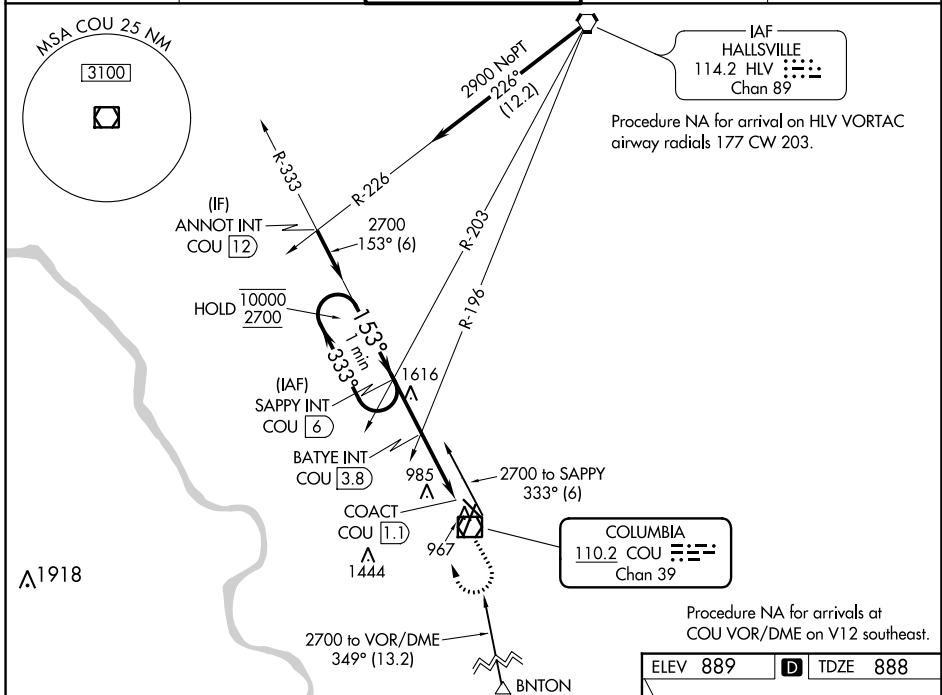
VOR RWY 13

COLUMBIA RGNL (COU)

⚠ Circling NA for Cat D west of Rwy 2 and 13.
⚠ Circling Rwy 20 NA at night.

MISSED APPROACH: Climb to 1900 then dimbing right turn to 2700 on COU VOR/DME R-333 to SAPPY INT/COU 6 DME and hold.

ATIS 128.45	MIZU APP CON 124.375 353.925	COLUMBIA TOWER * 119.3 (CTAF) 363.25	GND CON 121.6	UNICOM 122.95
-----------------------	--	---	-------------------------	-------------------------



CATEGORY	A	B	C	D
S-13	1880-1¼ 991 (1000-1¼)	1880-1½ 991 (1000-1½)	1880-3	991 (1000-3)
C CIRCLING	1880-1¼ 991 (1000-1¼)	1880-1½ 991 (1000-1½)	1880-3	991 (1000-3)
BATYE FIX MINIMUMS				
S-13	1240-1 351 (400-1)			
C CIRCLING	1300-1 411 (500-1)	1340-1 451 (500-1)	1360-1½ 471 (500-1½)	1440-2 551 (600-2)

NC-3, 22 FEB 2024 to 21 MAR 2024

NC-3, 22 FEB 2024 to 21 MAR 2024

VOR/DME COU 110.2 Chan 39	APP CRS 196°	Rwy Idg 7401 TDZE 889 Apt Elev 889
---	------------------------	---

VOR Y RWY 20

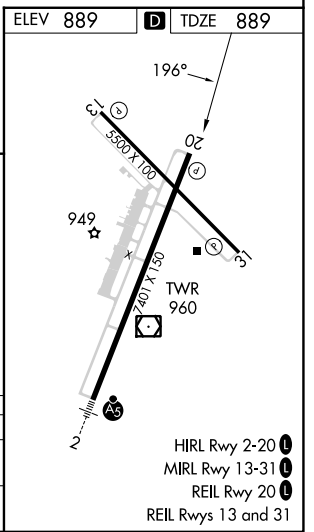
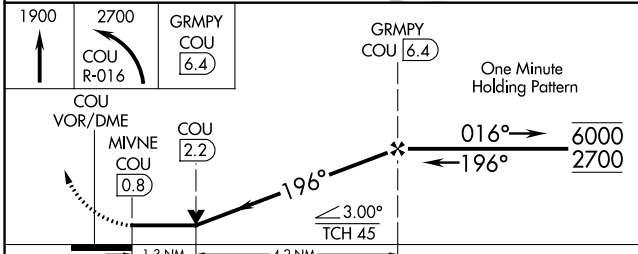
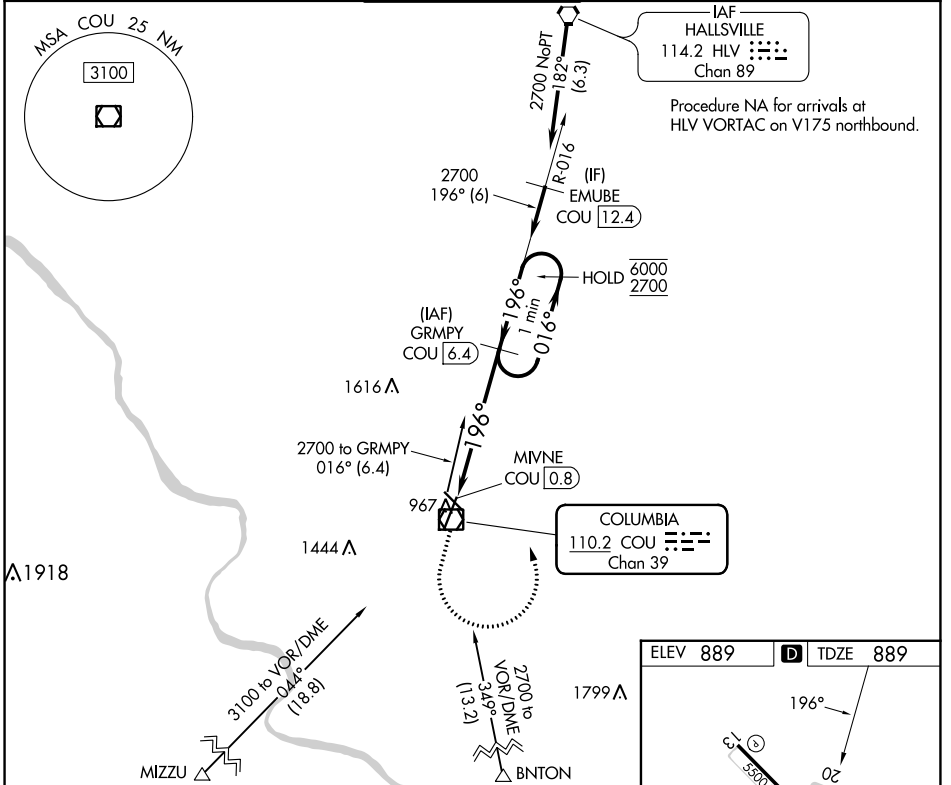
COLUMBIA RGNL (COU)

DME required.

⚠ Circling NA for Cat D west of Rwy 2 and 13.

MISSED APPROACH: Climb to 1900 then climbing left turn to 2700 on COU VOR/DME R-016 to GRMPY/COU 6.4 DME and hold.

ATIS 128.45	MIZU APP CON 124.375 353.925	COLUMBIA TOWER ★ 119.3 (CTAF) 363.25	GND CON 121.6	UNICOM 122.95
-----------------------	--	---	-------------------------	-------------------------



CATEGORY	A	B	C	D
S-20	1360-1 471 (500-1)		1360-1 $\frac{3}{8}$ 471 (500-1 $\frac{3}{8}$)	
C CIRCLING	1360-1 471 (500-1)		1360-1 $\frac{1}{2}$ 471 (500-1 $\frac{1}{2}$)	1440-2 551 (600-2)

NC-3, 22 FEB 2024 to 21 MAR 2024

NC-3, 22 FEB 2024 to 21 MAR 2024

VOR/DME COU 110.2 Chan 39	APP CRS 199°	Rwy Idg TDZE 7401 889	Apt Elev 889
---	------------------------	---	------------------------

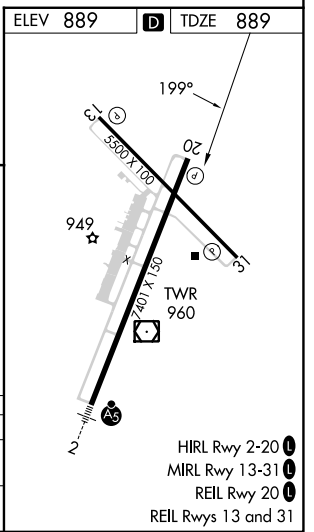
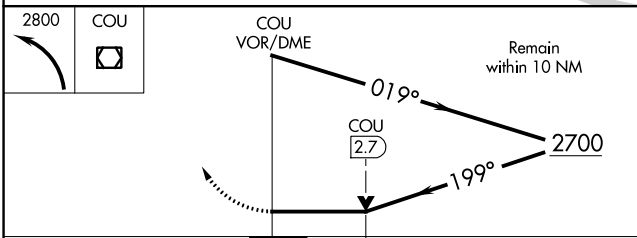
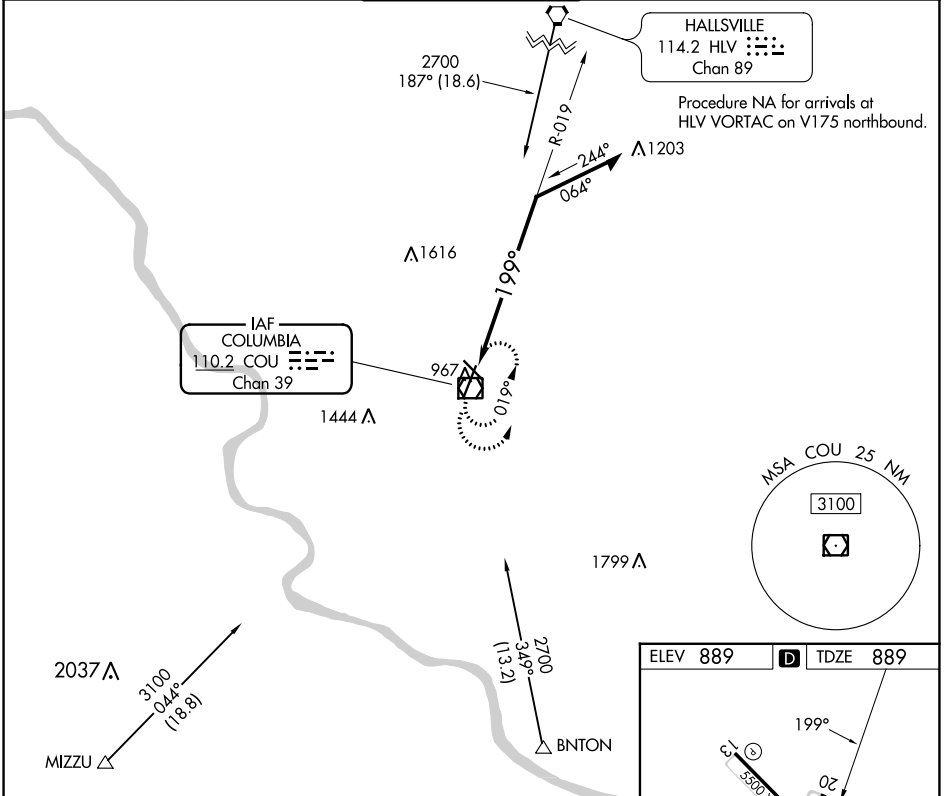
VOR Z RWY 20

COLUMBIA RGNL (COU)

⚠ Circling NA for Cat D west of Rwy 2 and 13.

MISSED APPROACH: Climbing left turn to 2800 in COU VOR/DME holding pattern.

ATIS 128.45	MIZZU APP CON 124.375 353.925	COLUMBIA TOWER * 119.3 (CTAF) 363.25	GND CON 121.6	UNICOM 122.95
-----------------------	---	---	-------------------------	-------------------------



CATEGORY	A	B	C	D
S-20	1520-1	631 (700-1)	1520-1 ³ / ₄	631 (700-1 ³ / ₄)
C CIRCLING	1520-1	631 (700-1)	1520-1 ³ / ₄ 631 (700-1 ³ / ₄)	1520-2 631 (700-2)

NC-3, 22 FEB 2024 to 21 MAR 2024

NC-3, 22 FEB 2024 to 21 MAR 2024

- HIRL Rwy 2-20 **1**
- MIRL Rwy 13-31 **1**
- REIL Rwy 20 **1**
- REIL Rwy 13 and 31 **1**