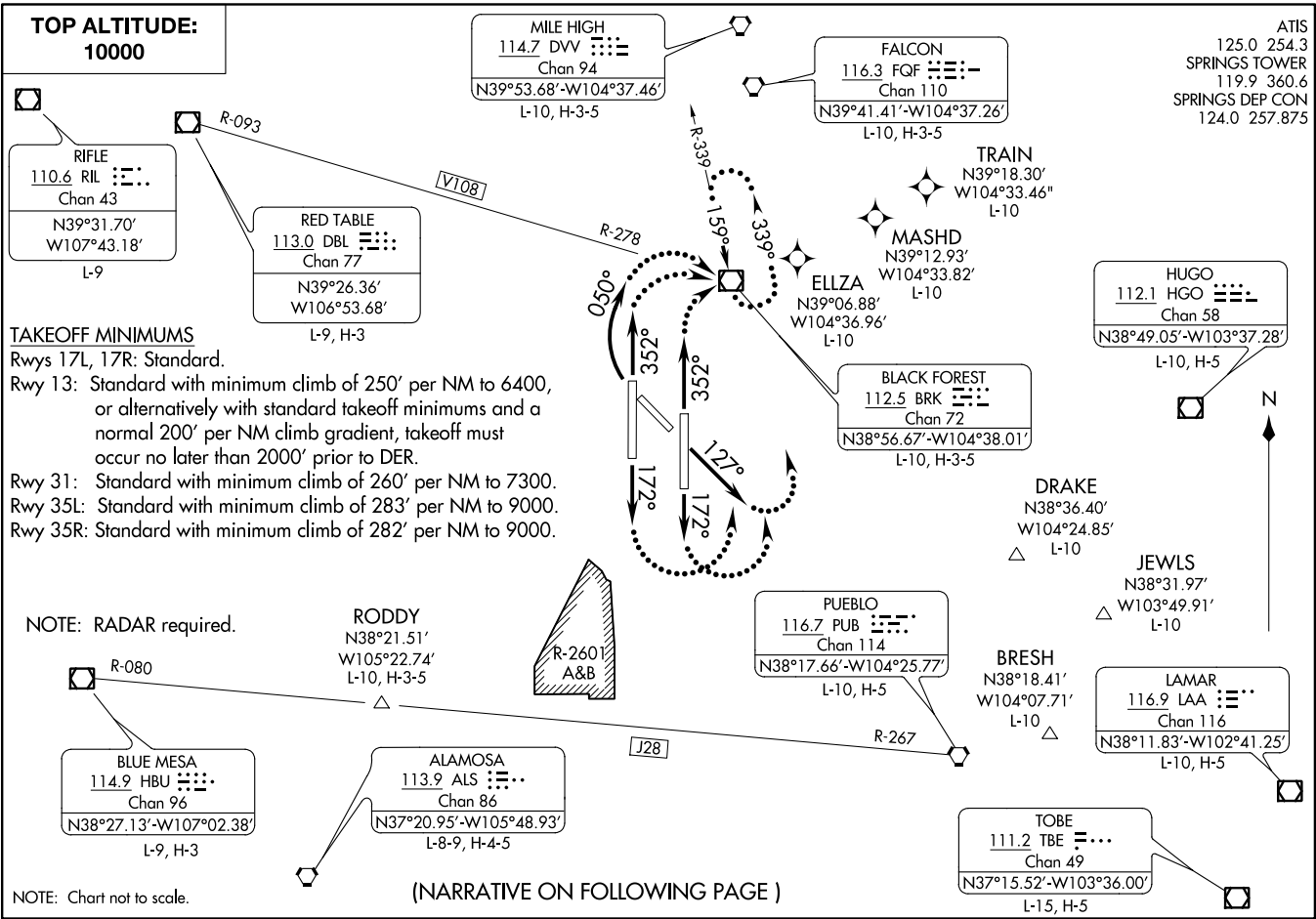


SPRINGS SIX DEPARTURE
(COS6, BRK) 29MAR18

CITY OF COLORADO SPRINGS MUNI (COS)
COLORADO SPRINGS, COLORADO



(COS6, BRK) 18088
SPRINGS SIX DEPARTURE

CITY OF COLORADO SPRINGS MUNI (COS)
COLORADO SPRINGS, COLORADO

ATIS 125.0
SPRINGS TOWER 119.9
SPRINGS DEP CON 124.0 257.875

AL-87 (FAAN)



DEPARTURE ROUTE DESCRIPTION

TAKEOFF RUNWAY 13: Climb heading 127° for RADAR vectors to filed/assigned route, thence. . . .

TAKEOFF RUNWAY 17L: Climb heading 172° for RADAR vectors to filed/assigned route, thence. . . .

TAKEOFF RUNWAY 17R: Climb heading 172° for RADAR vectors to filed/assigned route, thence. . . .

TAKEOFF RUNWAY 35R: Climb heading 352° for RADAR vectors to filed/assigned route, thence. . . .

TAKEOFF RUNWAY 35L: Climb heading 352° for RADAR vectors to filed/assigned route, thence. . . .

TAKEOFF RUNWAY 31: Climbing right turn heading 050° for RADAR vectors to filed/assigned route, thence. . . .

. . . . maintain 10000. Expect clearance to filed altitude/flight level ten minutes after departure.

LOST COMMUNICATIONS: If not in contact with departure control within 1 minute after departure from runways 13 and 17L/R turn left, from runway 31 and 35L/R turn right direct BRK VOR/DME, thence via filed/assigned route.

AIRCRAFT FILED V108 WESTBOUND: Continue climb in holding pattern to cross BRK VOR/DME at or above 14000.

SW-1, 16 JUL 2020 to 13 AUG 2020

SW-1, 16 JUL 2020 to 13 AUG 2020