

BITHO SEVEN ARRIVAL

ORLANDO, FLORIDA

ORLANDO APP CON
128.375 338.2
MCO D-ATIS ARR
121.25

ORMOND BEACH
112.6 OMN
Chan 73
N29° 18.20' - W81° 06.76'
L-21-23-24, H-8

LAMMA
N29° 00.87' - W81° 05.38'

TURBOJET VERTICAL NAVIGATION
PLANNING INFORMATION

Expect clearance to cross at 15000' landing Patrick SFB, Melbourne Orlando Intl, and Merritt Island.

Expect clearance to cross at 12000' landing Orlando Intl, Kissimmee Gateway, Space Coast Rgnl, Cape Canaveral SFS Skid Strip, and NASA Shuttle Landing Facility.
NOTE: Orlando Intl Landing South: Expect clearance to cross at 250K.

OCALA
113.7 OCF
Chan 84

JESUP
N28° 53.31' - W81° 04.78'

COZMO
N28° 47.95' - W81° 04.36'

TURBOJET VERTICAL NAVIGATION
PLANNING INFORMATION

Expect clearance to cross at 10000' landing Orlando Intl Rwy 18.

ORLANDO
112.2 ORL
Chan 59

BITHO
N28° 37.86' - W81° 03.56'

TURBOJET VERTICAL NAVIGATION
PLANNING INFORMATION

Expect clearance to cross at 8000' landing NASA Shuttle Landing Facility, Cape Canaveral SFS Skid Strip, Merritt Island, Patrick SFB, and Melbourne Orlando Intl.

ORLANDO INTL

KISSIMMEE GATEWAY

SPACE COAST RGNL

NASA SHUTTLE LANDING FACILITY

CAPE CANAVERAL SFS SKID STRIP

MERRITT ISLAND

PATRICK SFB

MELBOURNE ORLANDO INTL

NOTE: Chart not to scale.

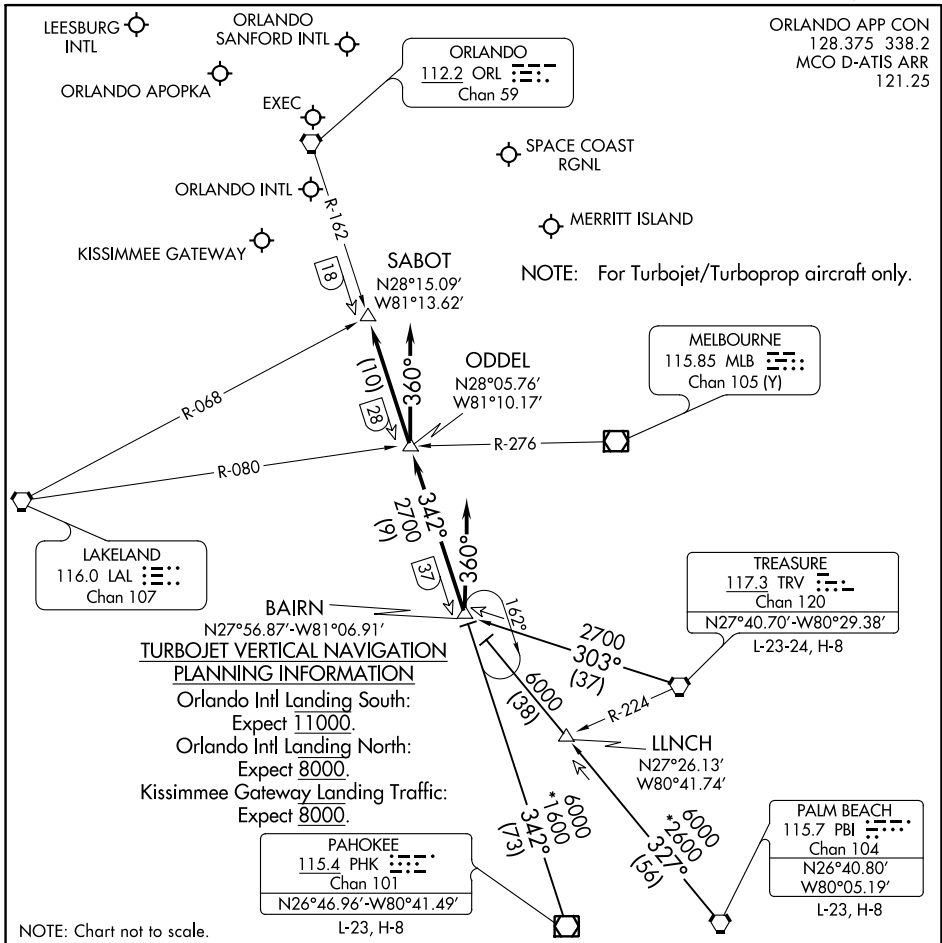
ARRIVAL ROUTE DESCRIPTION

From over OMN VORTAC via OMN R-176 to BITHO INT. Expect RADAR vectors to final approach course after BITHO INT.

SE-3, 02 DEC 2021 to 27 JAN 2022

SE-3, 02 DEC 2021 to 27 JAN 2022

GOOFY SEVEN ARRIVAL



SE-3, 02 DEC 2021 to 30 DEC 2021

SE-3, 02 DEC 2021 to 30 DEC 2021

ARRIVAL ROUTE DESCRIPTION

PAHOKEE TRANSITION (PHK.GOOFY7): From over PHK VOR/DME on PHK R-342 to BAIRN INT.

Thence . . .

PALM BEACH TRANSITION (PBI.GOOFY7): From over PBI VORTAC on PBI R-327 to BAIRN INT.

Thence . . .

TREASURE TRANSITION (TRV.GOOFY7): From over TRV VORTAC on TRV R-303 to BAIRN INT.

Thence . . .

ORLANDO INTL:

. . . Rwy 17/18: From over BAIRN INT on ORL VORTAC R-162 to ODDEL INT. Depart ODDEL INT heading 360° for vector to final approach course.

. . . Rwy 35/36: Depart BAIRN INT heading 360° for vector to final approach course.

LEESBURG INTL: . . . From over BAIRN INT on ORL VORTAC R-162 to SABOT INT. Expect RADAR vectors to the airport.

ALL OTHER AIRPORTS: . . . From over BAIRN INT on ORL VORTAC R-162 to SABOT INT.

Expect RADAR vectors to final approach course.

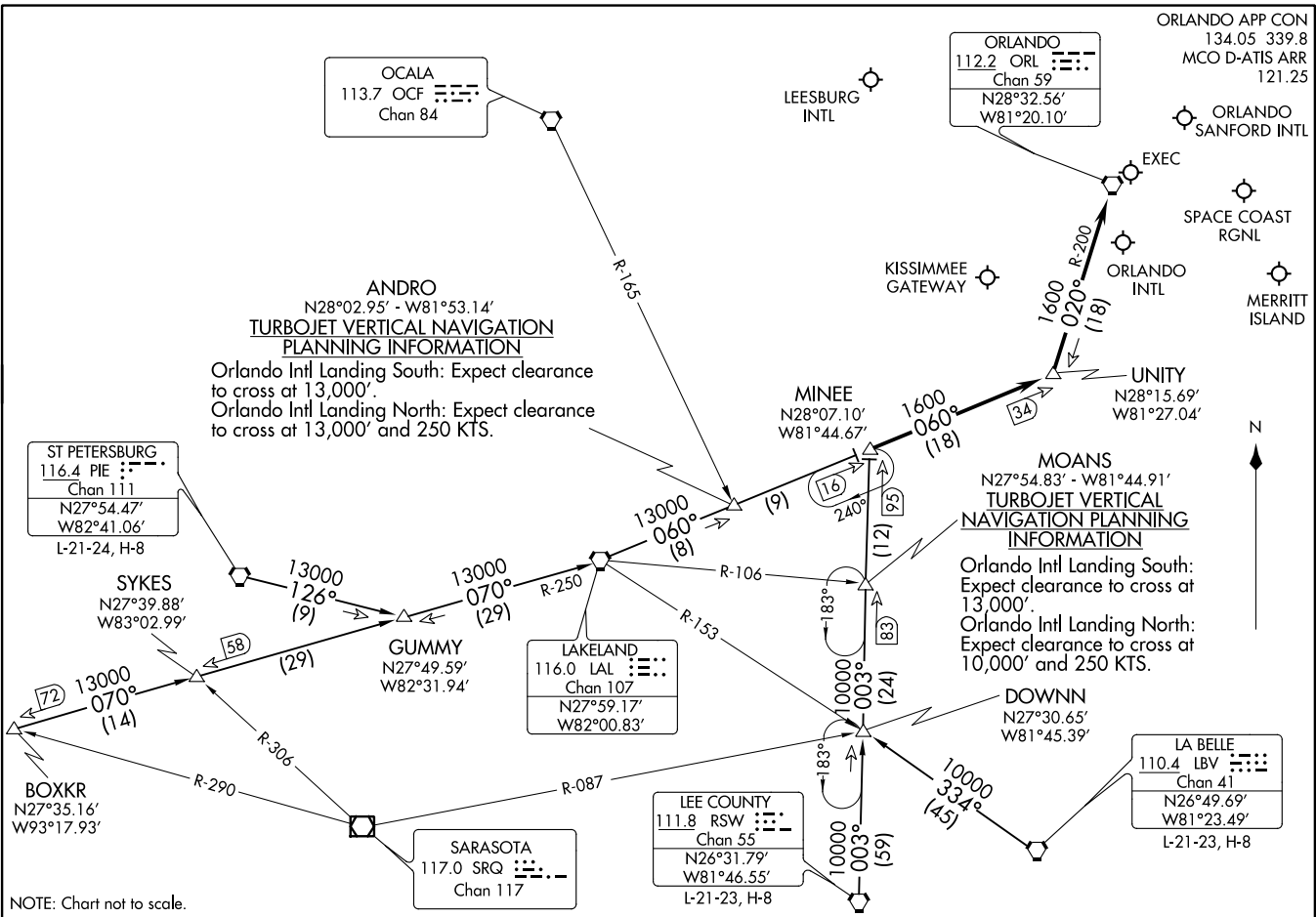
GOOFY SEVEN ARRIVAL

MINEE FIVE ARRIVAL
(MINEE.MINEE5) 13JAN11

(MINEE.MINEE5) 21168
MINEE FIVE ARRIVAL

AL-571 (FAA)

ORLANDO, FLORIDA



MINEE FIVE ARRIVAL (MINEE.MINEE5)

ORLANDO, FLORIDA

ARRIVAL ROUTE DESCRIPTION

BOXKR TRANSITION (BOXKR.MINEE5): From over BOXKR INT via LAL R-250 to LAL VORTAC, then via LAL R-060 to MINEE INT. Thence. . . .

LA BELLE TRANSITION (LBV.MINEE5): From over LBV VORTAC via LBV R-334 to DOWNN INT, then via RSW R-003 to MINEE INT. Thence. . . .

LEE COUNTY TRANSITION (RSW.MINEE5): From over RSW VORTAC via RSW R-003 to MINEE INT. Thence. . . .

ST. PETERSBURG TRANSITION (PIE.MINEE5): From over PIE VORTAC via PIE R-126 to GUMMY INT, then via LAL R-250 to LAL VORTAC, then via LAL R-060 to MINEE INT. Thence. . . .

. . . . From over MINEE INT via LAL R-060 to UNITY INT, then via ORL R-200 to ORL VORTAC.

LEESBURG INTL: Expect radar vectors to airport after UNITY INT.

ALL OTHER AIRPORTS: Expect radar vectors to final approach course after UNITY INT.

SE-3, 02 DEC 2021 to 30 DEC 2021

SE-3, 02 DEC 2021 to 30 DEC 2021