

BANKR FOUR ARRIVAL (RNAV) AL-78 (FAA)

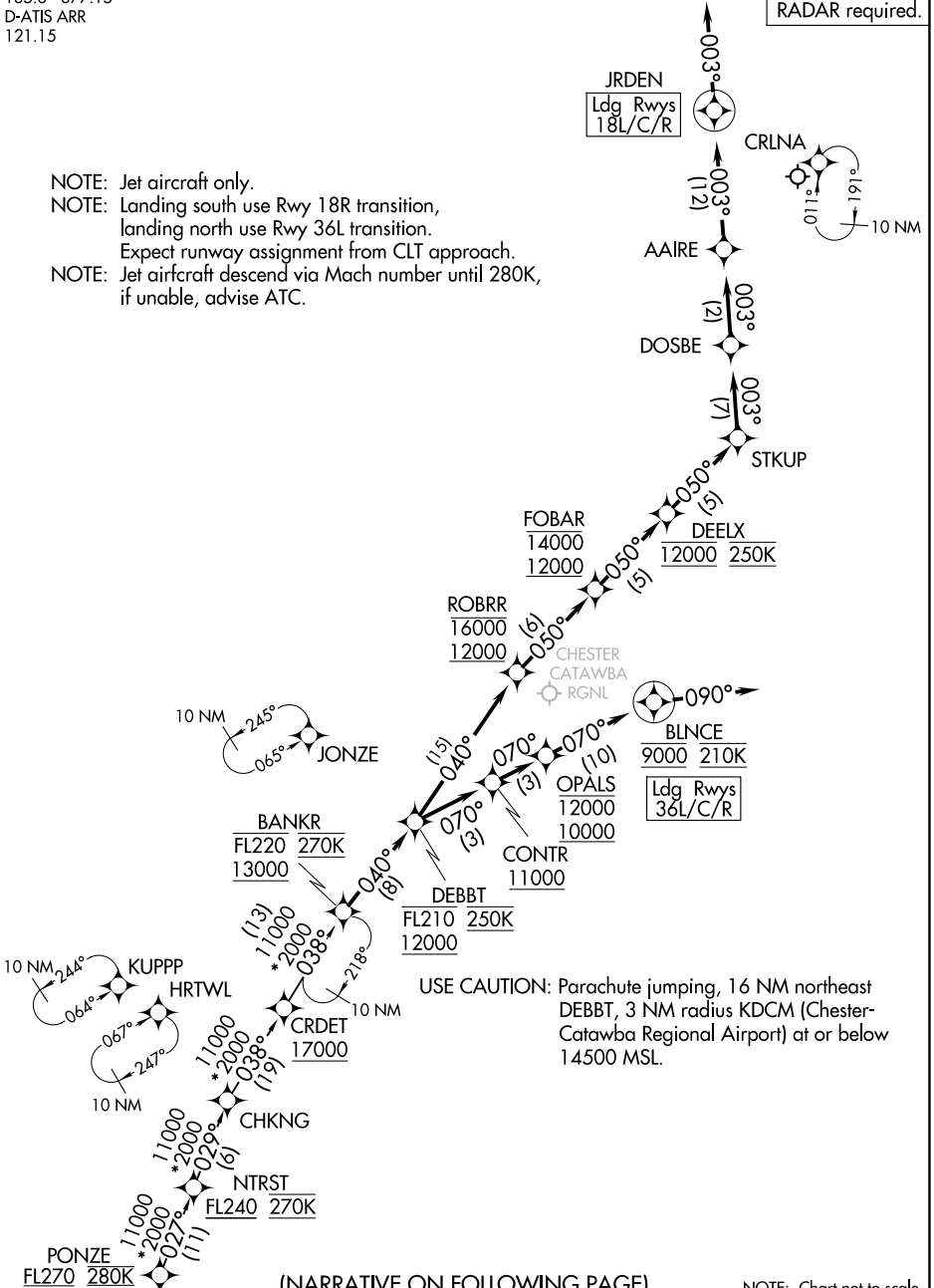
CHARLOTTE/DOUGLAS INTL (CLT)
CHARLOTTE, NORTH CAROLINA

CHARLOTTE APP CON
135.6 377.15
D-ATIS ARR
121.15

RNAV 1 - DME/DME/IRU or GPS.

RADAR required.

- NOTE: Jet aircraft only.
- NOTE: Landing south use Rwy 18R transition, landing north use Rwy 36L transition.
- NOTE: Expect runway assignment from CLT approach.
- NOTE: Jet aircraft descend via Mach number until 280K, if unable, advise ATC.



(NARRATIVE ON FOLLOWING PAGE)

NOTE: Chart not to scale.

BANKR FOUR ARRIVAL (RNAV)

CHARLOTTE, NORTH CAROLINA
CHARLOTTE/DOUGLAS INTL (CLT)

ARRIVAL ROUTE DESCRIPTION

PONZE TRANSITION (PONZE.BANKR4)

From BANKR on track 040° to cross DEBBT between 12000 and FL210 and at 250K.

LANDING RUNWAYS 18L/C/R: From DEBBT on track 040° to cross ROBRR between 12000 and 16000, then on track 050° to cross FOBAR between 12000 and 14000, then on track 050° to cross DEELX at 12000 and at 250K, then on track 050° to STKUP, then on track 003° to DOSBE, then on track 003° to AAIRE, then on track 003° to JRDEN, then on track 003°. Expect RADAR vectors to final approach course.

LANDING RUNWAYS 36L/C/R: From DEBBT on track 070° to cross CONTR at or above 11000, then on track 070° to cross OPALS between 10000 and 12000, then on track 070° to cross BLNCE at 9000 and at 210K, then on heading 090°. Expect RADAR vectors to final approach course.

SE-2, 22 FEB 2024 to 21 MAR 2024

SE-2, 22 FEB 2024 to 21 MAR 2024

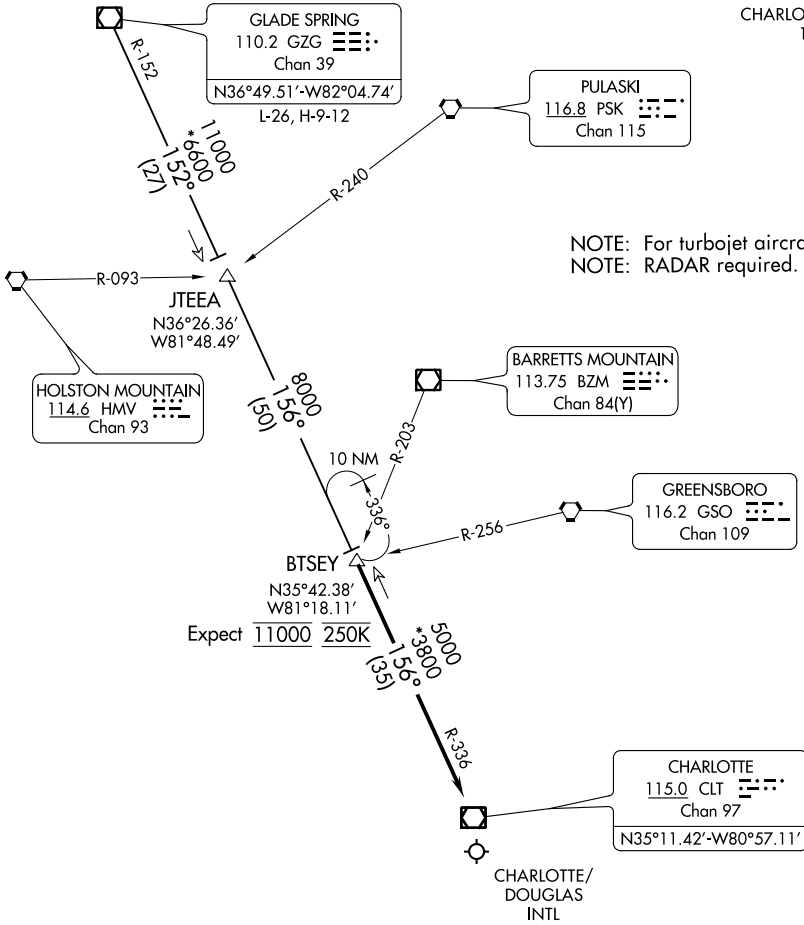
(BTSEY.BTSEY2) 22307

BTSEY TWO ARRIVAL

AL-78 (FAA)

CHARLOTTE/DOUGLAS INTL (CLT)
CHARLOTTE, NORTH CAROLINA

CHARLOTTE APP CON
125.35 257.2
D-ATIS ARR
121.15



NOTE: For turbojet aircraft only.
NOTE: RADAR required.

NOTE: Chart not to scale.

ARRIVAL ROUTE DESCRIPTION

GLADE SPRINGS TRANSITION (GZG.BTSEY2): From over GZG VOR/DME on GZG R-152 to JTEEA, then on CLT R-336 to BTSEY. Thence

. . . . from BTSEY on CLT R-336 to CLT VOR/DME. Expect RADAR vectors to final approach course prior to CLT VOR/DME.

BTSEY TWO ARRIVAL
(BTSEY.BTSEY2) 31MAR16

CHARLOTTE, NORTH CAROLINA
CHARLOTTE/DOUGLAS INTL (CLT)

SE-2, 22 FEB 2024 to 21 MAR 2024

SE-2, 22 FEB 2024 to 21 MAR 2024

CHSLY FIVE ARRIVAL (RNAV) Transition Routes

CHARLOTTE APP CON
126.15 282.325
D-ATIS ARR
121.15

- NOTE: RADAR required.
- NOTE: RNAV 1.
- NOTE: DME/DME/IRU or GPS required.
- NOTE: Turbojet aircraft only.
- NOTE: Descend via MACH number until intercepting 280K. Maintain 280K until slowed by the STAR or assigned by ATC.
- NOTE: Expect "descend via" clearance and landing direction assignment (north or south) by ARTCC.
- NOTE: For vertical navigation planning, landing south, select Rwy 18L, landing north, select Rwy 36R.
- NOTE: NUUMN TRANSITION ATC assigned only.
- NOTE: CLT approach will assign landing runway.

LYNCHBURG
LYH

FL180
*4000
221°
(17)

BEMOH

FL180
*4000
221°
(16)

10 NM
041°
WRLLD

17000
*4000
221°
(22)

10 NM
041°
BLUEJ
FL270

15000
*3800
221°
(12)

BURRZ
FL270 280K
FL240

13000
*3400
221°
(6)

SKLES
FL220 280K

13000
*3500
221°
(20)

DENTT
16000 270K

BOOTS
FL230
13000

13000
*3000
221°
(8)

13000
*2200
221°
(3)

CHSLY
FL220 250K
13000

10 NM
041°

WLLSH
16000 270K

13000
*3100
265°
(19)

SDAIL
FL230 280K
17000

NUUMN
13000
*2900
272°
(4)

13000
*2200
272°
(4)

SHANZ
15000
*2200
272°
(4)

10 NM
091°
FEDOX

16000
*2900
271°
(8)

10 NM
087°
PELTS

COUPN
16000 *2500
247°
(65)

16000 *2900
267°
(63)

ARGAL

COUPN TRANSITION (COUPN.CHSLY5)
LYNCHBURG TRANSITION (LYH.CHSLY5)
NUUMN TRANSITION (NUUMN.CHSLY5)
SDAIL TRANSITION (SDAIL.CHSLY5)

See following page for Arrival Routes.

(CONTINUED ON FOLLOWING PAGES)

NOTE: Chart not to scale.

CHSLY FIVE ARRIVAL (RNAV) Transition Routes

SE-2, 22 FEB 2024 to 21 MAR 2024

SE-2, 22 FEB 2024 to 21 MAR 2024

(CHSLY.CHSLY5) 23166

CHSLY FIVE ARRIVAL (RNAV)

AL-78 (FAA)

Arrival Routes

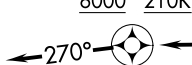
CHARLOTTE/DOUGLAS INTL (CLT)
CHARLOTTE, NORTH CAROLINA

CHARLOTTE APP CON
126.15 282.325
D-ATIS ARR
121.15

CHSLY
FL220 250K
13000

Landing South
Rwys 18L/C/R:
Expect RADAR vectors
to final approach
course after HEELZ.

HEELZ
6000 210K



JAMGO
16000 250K
10000

WHIZE
12000 9000

CAATT
9000 210K



183°

(12)

EPAYE
6000 210K

183°

Landing North
Rwys 5, 36L/C/R:
Expect RADAR vectors
to final approach
course after EPAYE.

SLPOH
FL210
10000

219°
(10)

NODEW
9000 230K
8000

201°
(7)

BLNCO
7000

236°
(4)

JEPHS
6000

- NOTE: RADAR required.
- NOTE: RNAV 1.
- NOTE: DME/DME/IRU or GPS required.
- NOTE: Turbojet aircraft only.
- NOTE: Descend via MACH number until intercepting 280K. Maintain 280K until slowed by the STAR or assigned by ATC.
- NOTE: Expect "descend via" clearance and landing direction assignment (north or south) by ARTCC.
- NOTE: For vertical navigation planning, landing south, select Rwy 18L, landing north, select Rwy 36R.
- NOTE: CLT approach will assign landing runway.
- NOTE: CAUTION: Parachute jumping 3 NM south SLPOH, 5 NM radius KRUG (Mid-Carolina Rgnl), AOB 14,500 MSL (SR-SS).
- NOTE: Landing South Rwy 23: Intercept localizer or as assigned by ATC after JEPHS.

(NARRATIVE ON FOLLOWING PAGE)

NOTE: Chart not to scale.

SE-2, 22 FEB 2024 to 21 MAR 2024

SE-2, 22 FEB 2024 to 21 MAR 2024

CHSLY FIVE ARRIVAL (RNAV)

(CHSLY.CHSLY5) 02DEC21

Arrival Routes

CHARLOTTE, NORTH CAROLINA
CHARLOTTE/DOUGLAS INTL (CLT)

CHSLY FIVE ARRIVAL (RNAV)

ARRIVAL ROUTE DESCRIPTION

From CHSLY on track 225° to cross KRISS at or above 11000, then on track 211° to cross SLPOH between 10000 and FL210.

LANDING RUNWAYS 5, 36L/C/R: From SLPOH on track 219° to cross JAMGO between 10000 and 16000 and at 250K, then on track 218° to cross WHIZE between 9000 and 12000, then on track 218° to cross CAATT at 9000 and at 210K, then on track 183° to cross EPAYE at 6000 and at 210K, then on track 183°. Expect RADAR vectors to final approach course.

LANDING RUNWAYS 18L/C/R: From SLPOH on track 201° to cross NODEW between 8000 and 9000 and at 230K, then on track 276° to cross HEELZ at 6000 and at 210K, then on track 270°. Expect RADAR vectors to final approach course.

LANDING RUNWAY 23: From SLPOH on track 201° to cross NODEW between 8000 and 9000 and at 230K, then on track 201° to cross BLNCO at or above 7000, then on track 236° to cross JEPHS at or above 6000. Expect ILS or LOC Rwy 23 approach.

SE-2, 22 FEB 2024 to 21 MAR 2024

SE-2, 22 FEB 2024 to 21 MAR 2024

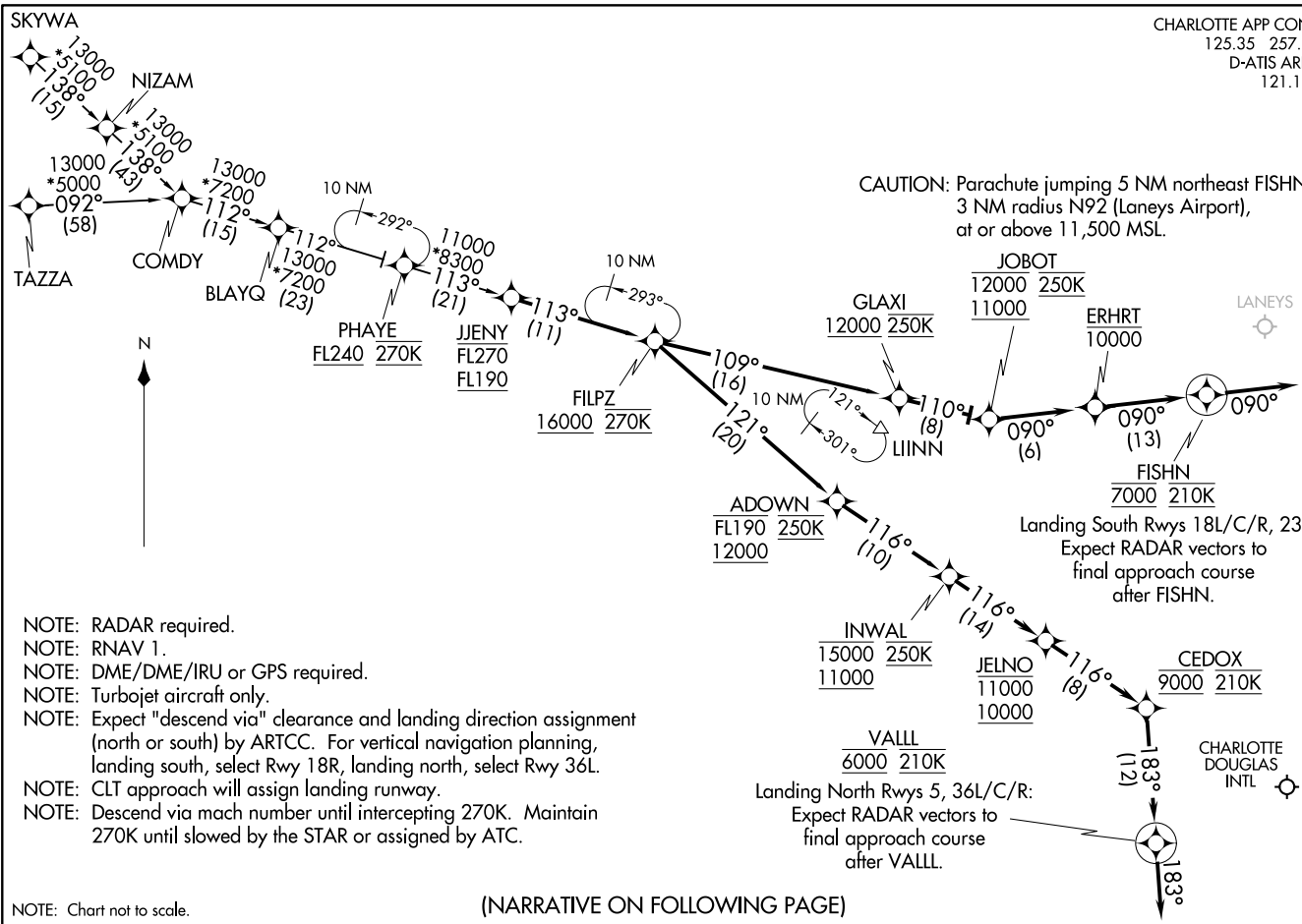
CHARLOTTE APP CON
125.35 257.2
D-ATIS ARR
121.15

(JENY.FILPZ3) 201.98
FILPZ THREE ARRIVAL (RNAV)

AL-78 (FAA)

CHARLOTTE/DOUGLAS INTL (CLT)
CHARLOTTE, NORTH CAROLINA

FILPZ THREE ARRIVAL (RNAV)
(JENY.FILPZ3) 17AUG17



CAUTION: Parachute jumping 5 NM northeast FISHN, 3 NM radius N92 (Laneys Airport), at or above 11,500 MSL.

Landing South Rwy 18L/C/R, 23:
Expect RADAR vectors to final approach course after FISHN.

Landing North Rwy 5, 36L/C/R:
Expect RADAR vectors to final approach course after VALL.

- NOTE: RADAR required.
- NOTE: RNAV 1.
- NOTE: DME/DME/IRU or GPS required.
- NOTE: Turbojet aircraft only.
- NOTE: Expect "descend via" clearance and landing direction assignment (north or south) by ARTCC. For vertical navigation planning, landing south, select Rwy 18R, landing north, select Rwy 36L.
- NOTE: CLT approach will assign landing runway.
- NOTE: Descend via mach number until intercepting 270K. Maintain 270K until slowed by the STAR or assigned by ATC.

NOTE: Chart not to scale.

(NARRATIVE ON FOLLOWING PAGE)

FILPZ THREE ARRIVAL (RNAV)

ARRIVAL ROUTE DESCRIPTION

COMDY TRANSITION (COMDY.FILPZ3):

SKYWA TRANSITION (SKYWA.FILPZ3):

TAZZA TRANSITION (TAZZA.FILPZ3):

From JJENY on track 113° to cross FILPZ at or above 16000 and at 270K.

LANDING RWYS 5, 36L/C/R: From FILPZ on track 121° to cross ADOWN between 12000 and FL190 and at 250K, then on track 116° to cross INWAL between 11000 and 15000 and at 250K, then on track 116° to cross JELNO between 10000 and 11000, then on track 116° to cross CEDOX at 9000 and at 210K, then on track 183° to cross VALLL at 6000 and at 210K, then on track 183°. Expect RADAR vectors to final approach course.

LANDING RWYS 18L/C/R, 23: From FILPZ on track 109° to cross GLAXI at or above 12000 and at 250K, then on track 110° to cross JOBOT between 11000 and 12000 and at 250K, then on track 090° to cross ERHRT at or below 10000, then on track 090° to cross FISHN at 7000 and at 210K, then on track 090°. Expect RADAR vectors to final approach course.

SE-2, 22 FEB 2024 to 21 MAR 2024

SE-2, 22 FEB 2024 to 21 MAR 2024

JONZE FOUR ARRIVAL (RNAV)
(JONZE.JONZE4) 05OCT23

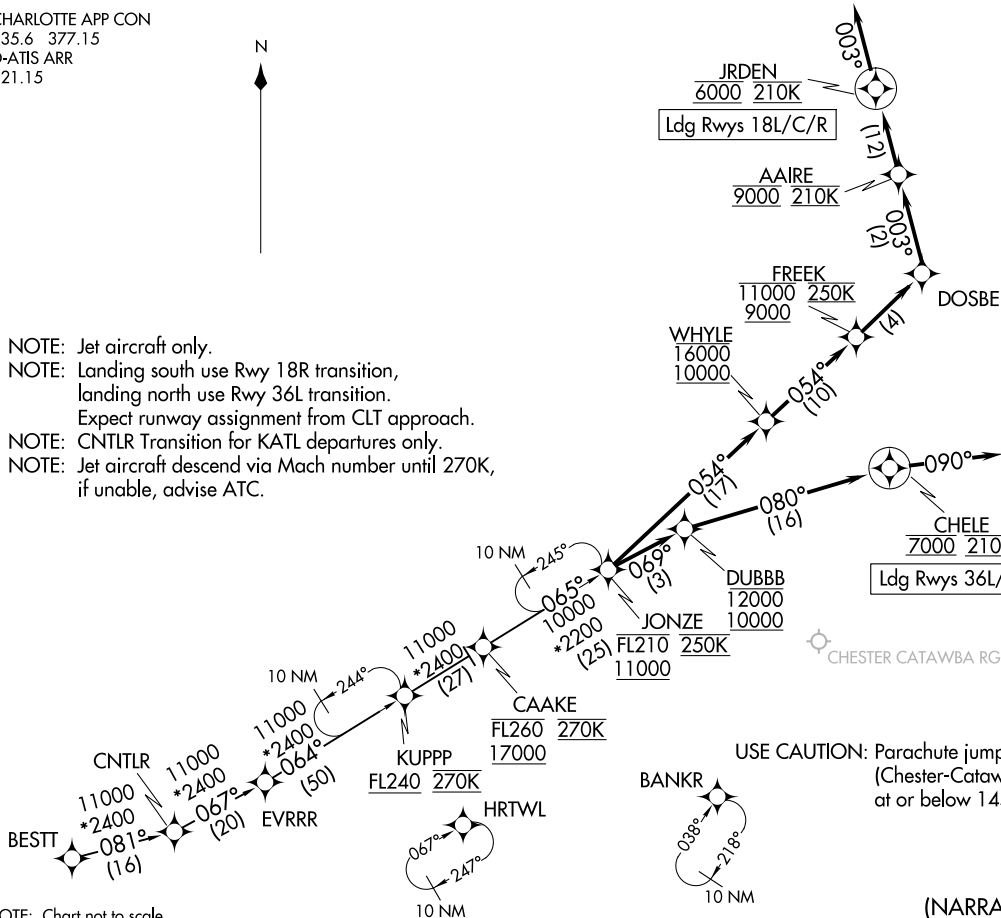
CHARLOTTE/DOUGLAS INTL (CLT)
CHARLOTTE NORTH CAROLINA

CHARLOTTE APP CON
135.6 377.15
D-ATIS ARR
121.15



RNAV 1 - DME/DME/IRU or GPS.
RADAR required.

- NOTE: Jet aircraft only.
- NOTE: Landing south use Rwy 18R transition, landing north use Rwy 36L transition. Expect runway assignment from CLT approach.
- NOTE: CNTLR Transition for KATL departures only.
- NOTE: Jet aircraft descend via Mach number until 270K, if unable, advise ATC.



USE CAUTION: Parachute jumping, 3 NM radius KDCM (Chester-Catawba Regional Airport) at or below 14500 MSL.

(NARRATIVE ON FOLLOWING PAGE)

JONZE FOUR ARRIVAL (RNAV)
23278

CHARLOTTE/DOUGLAS INTL (CLT)
CHARLOTTE NORTH CAROLINA

AL-78 (FAA)

JONZE FOUR ARRIVAL (RNAV)

ARRIVAL ROUTE DESCRIPTION

BESTT TRANSITION (BESTT.JONZE4)

CNTLR TRANSITION (CNTLR.JONZE4)

LANDING RUNWAYS 18L/C/R: From JONZE on track 054° left turn to cross WHYLE between 10000 and 16000, then on track 054° to cross FREEK between 9000 and 11000 and at 250K, then on track 054° to DOSBE, then on track 003° to cross AAIRE at 9000 and at 210K, then on track 003° to cross JRDEN at 6000 and at 210K, then on track 003°. Expect RADAR vectors to final approach course.

LANDING RUNWAYS 36L/C/R: From JONZE on track 069° left turn to cross DUBBB between 10000 and 12000, then on track 080° to cross CHELE at 7000 and at 210K, then on track 090°. Expect RADAR vectors to final approach course.

SE-2, 22 FEB 2024 to 21 MAR 2024

SE-2, 22 FEB 2024 to 21 MAR 2024

JOOLS ONE ARRIVAL (RNAV)
(JOOLS.JOOLS1) 15JUN23

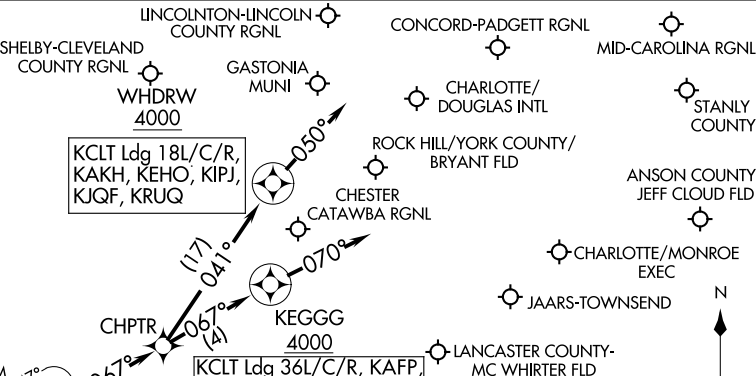
JOOLS ONE ARRIVAL (RNAV)
(JOOLS.JOOLS1) 23166

AL-78 (FAA)

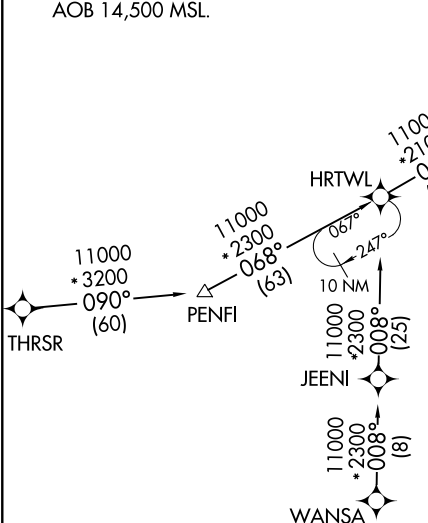
CHARLOTTE NORTH CAROLINA

CHARLOTTE APP CON
135.6 377.15
CLT D-ATIS ARR
121.15
JQF ATIS *
133.675

RNAV 1 - DME/DME/IRU or GPS.
RADAR required.



Use CAUTION: Parachute jumping 17 NM NE of
CHPTR, 3 NM radius KDCM (Chester-Catawba Rgnl),
AOB 14,500 MSL.



ARRIVAL ROUTE DESCRIPTION

THRSR TRANSITION (THRSR.JOOLS1)
WANSA TRANSITION (WANSA.JOOLS1)

- KCLT: From JOOLS on track 067° to CHPTR.
- LANDING RUNWAYS 18L/C/R: From CHPTR on track 041° to cross WHDRW at or above 4000, then on track 050°. Expect RADAR vectors to final approach course.
- LANDING RUNWAYS 36L/C/R: From CHPTR on track 067° to cross KEGGG at or above 4000, then on track 070°. Expect RADAR vectors to final approach course.
- LANDING KAKH/KRUQ/KEHO/KJQF/KIPJ: From JOOLS on track 067° to CHPTR, then on track 041° to cross WHDRW at or above 4000, then on track 050°. Expect RADAR vectors to final approach course.
- LANDING KDCM/KEQY/KUZA/KAFP/N52/KVUJ/KLKR: From JOOLS on track 067° to CHPTR, then on track 067° to cross KEGGG at or above 4000, then on track 070°. Expect RADAR vectors to final approach course.

NOTE: Chart not to scale.

CHARLOTTE NORTH CAROLINA

CHARLOTTE APP CON
125.35 257.2
CLT D-ATIS ARR
121.15

(JALIT.LINN3) 22307
LINN THREE ARRIVAL

AL-78 (FAA)

CHARLOTTE, NORTH CAROLINA

NOTE: RADAR required.
NOTE: VXV transition for turbojet aircraft only.
NOTE: HMV and SOT transitions for turboprop/prop aircraft only.

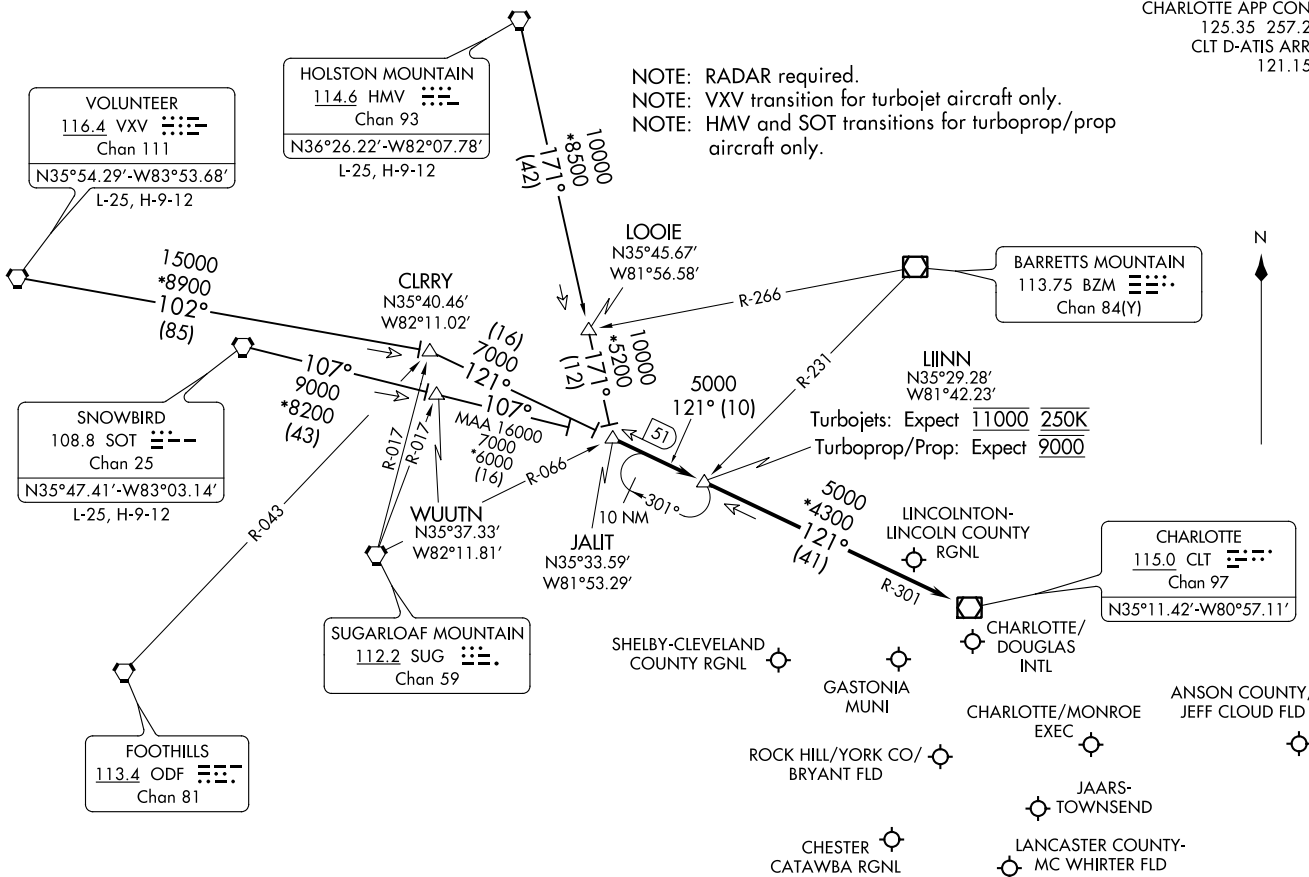


(NARRATIVE ON FOLLOWING PAGE)

NOTE: Chart not to scale.

LINN THREE ARRIVAL
(JALIT.LINN3) 08NOV18

CHARLOTTE, NORTH CAROLINA



VOLUNTEER
116.4 VXV
Chan 111
N35°54.29'-W83°53.68'
L-25, H-9-12

HOLSTON MOUNTAIN
114.6 HMV
Chan 93
N36°26.22'-W82°07.78'
L-25, H-9-12

SNOWBIRD
108.8 SOT
Chan 25
N35°47.41'-W83°03.14'
L-25, H-9-12

FOOTHILLS
113.4 ODF
Chan 81

SUGARLOAF MOUNTAIN
112.2 SUG
Chan 59

CLRRY
N35°40.46'
W82°11.02'

WUJTN
N35°37.33'
W82°11.81'

JALIT
N35°33.59'
W81°53.29'

LOOIE
N35°45.67'
W81°56.58'

BARRETT'S MOUNTAIN
113.75 BZM
Chan 84(Y)

LINN
N35°29.28'
W81°42.23'

CHARLOTTE
115.0 CLT
Chan 97
N35°11.42'-W80°57.11'

CHARLOTTE/
DOUGLAS
INTL

CHARLOTTE/MONROE
EXEC

ANSON COUNTY/
JEFF CLOUD FLD

ROCK HILL/YORK CO/
BRYANT FLD

JAARS-
TOWNSEND

CHESTER
CATAWBA RGNL

LANCASTER COUNTY-
MC WHIRTER FLD

GASTONIA
MUNI

SHELBY-CLEVELAND
COUNTY RGNL

LINCOLN-
LINCOLN COUNTY
RGNL

15000
*8900
102°
(85)

107°
9000
*8200
(43)

10000
*8500
171°
(121)

10000
*5200
171°
(121)

5000
121° (110)

5000
*4300
121°
(41)

(16)

(16)

(16)

(16)

(16)

(16)

(16)

(16)

(16)

(16)

(16)

(16)

(16)

(16)

(16)

(16)

(16)

(16)

(16)

(16)

(16)

(16)

(16)

(16)

(16)

(16)

(16)

(16)

(16)

(16)

(16)

(16)

(16)

(16)

(16)

(16)

(16)

(16)

(16)

(16)

(16)

(16)

(16)

(16)

(16)

(16)

(16)

(16)

(16)

(16)

(16)

(16)

(16)

(16)

(16)

(16)

(16)

(16)

(16)

(16)

(16)

(16)

(16)

(16)

(16)

(16)

(16)

(16)

(16)

(16)

(16)

(16)

(16)

(16)

(16)

(16)

(16)

(16)

(16)

(16)

(16)

(16)

(16)

(16)

(16)

(16)

(16)

(16)

(16)

(16)

(16)

(16)

(16)

(16)

(16)

(16)

(16)

(16)

(16)

(16)

(16)

(16)

(16)

(16)

(16)

(16)

(16)

(16)

(16)

(16)

(16)

(16)

(16)

(16)

(16)

(16)

(16)

(16)

(16)

(16)

(16)

(16)

(16)

(16)

(16)

(16)

(16)

(16)

(16)

(16)

(16)

(16)

(16)

(16)

(16)

(16)

(16)

(16)

(16)

(16)

(16)

(16)

(16)

(16)

(16)

(16)

(16)

(16)

(16)

(16)

(16)

(16)

(16)

(16)

(16)

(16)

(16)

(16)

(16)

(16)

(16)

(16)

(16)

(16)

(16)

(16)

(16)

(16)

(16)

(16)

(16)

(16)

(16)

(16)

(16)

(16)

(16)

(16)

(16)

(16)

(16)

(16)

(16)

(16)

(16)

(16)

(16)

(16)

(16)

(16)

(16)

(16)

(16)

(16)

ARRIVAL ROUTE DESCRIPTION

HOLSTON MOUNTAIN TRANSITION (HMV.LIINN3): From over HMV VORTAC on HMV R-171 to JALIT. Thence

SNOWBIRD TRANSITION (SOT.LIINN3): From over SOT VORTAC on SOT R-107 to JALIT. Thence

VOLUNTEER TRANSITION (VXV.LIINN3): From over VXV VORTAC on VXV R-102 to CLRRY, then on CLT R-301 to JALIT. Thence

. . . . from JALIT on CLT R-301 to LIINN, then on CLT R-301 to CLT VOR/DME. Expect RADAR vectors to destination airport or final approach course prior to CLT VOR/DME.

SE-2, 22 FEB 2024 to 21 MAR 2024

SE-2, 22 FEB 2024 to 21 MAR 2024

MAJIC FOUR ARRIVAL

CHARLOTTE, NORTH CAROLINA

CHARLOTTE APP CON
126.15 282.325
CLT D-ATIS ARR
121.15

MAYOS
N36°19.59'-W79°59.79'
TURBOJET VERTICAL NAVIGATION
PLANNING INFORMATION
Expect FL220

MAJIC
N35°48.71'-W80°26.17'
TURBOJET VERTICAL NAVIGATION
PLANNING INFORMATION
Expect 13000 250K

SUDSY
N35° 44.58'
W80° 29.63'

MID-CAROLINA
RGNL
GIZMO
N35° 32.99'
W80° 39.29'

CHARLOTTE
115.0 CLT
Chan 97
N35°11.42'-W80°57.11'

CHARLOTTE/MONROE
EXEC

JAARS-TOWNSEND

LANCASTER COUNTY-
MC WHIRTER FLD

CHESTER CATAWBA
RGNL

ROCK HILL/YORK
COUNTY/BRYANT
FLD

GASTONIA
MUNI

SHELBY-
CLEVELAND
COUNTY RGNL

LINCOLN-
LINCOLN COUNTY
RGNL

CHARLOTTE/
DOUGLAS
INTL

CAUTION: Parachute jumping 6 NM south-
southwest of SUDSY, 5 NM radius of (KRUC)
Mid-Carolina Rgnl, at or below 14500 MSL.

NOTE: DME required.
NOTE: RADAR required for LIB R-273.
NOTE: Landing other than Charlotte/
Douglas Intl; expect RADAR
vectors to destination airport
or final approach course prior
to CLT 10 DME fix.

RALEIGH/DURHAM
117.2 RDU
Chan 119
N35° 52.35'
W78° 47.00'
L-36, H-9-12

LIBERTY
113.0 LIB
Chan 77
N35°48.70'
W79°36.76'

LYNCHBURG
109.2 LYH
Chan 29
N37° 15.27'
W79° 14.18'
L-26-36, H-10-12

NOTE: Chart not to scale.

ARRIVAL ROUTE DESCRIPTION

LIBERTY TRANSITION (LIB.MAJIC4): From over LIB VORTAC on LIB R-273 to MAJIC INT. Thence. . .

LYNCHBURG TRANSITION (LYH.MAJIC4): From over LYH VOR/DME on LYH R-219 and CLT R-039 to MAJIC INT. Thence. . .

. . . From over MAJIC on CLT R-039 to:

LANDING NORTH: CLT VOR/DME. Expect RADAR vectors to final approach course prior to the CLT 5 DME fix.

LANDING SOUTH: GIZMO. Expect RADAR vectors to final approach course.

MAJIC FOUR ARRIVAL

(MAJIC.MAJIC4) 26MAR20

CHARLOTTE, NORTH CAROLINA

SE-2, 22 FEB 2024 to 21 MAR 2024

SE-2, 22 FEB 2024 to 21 MAR 2024

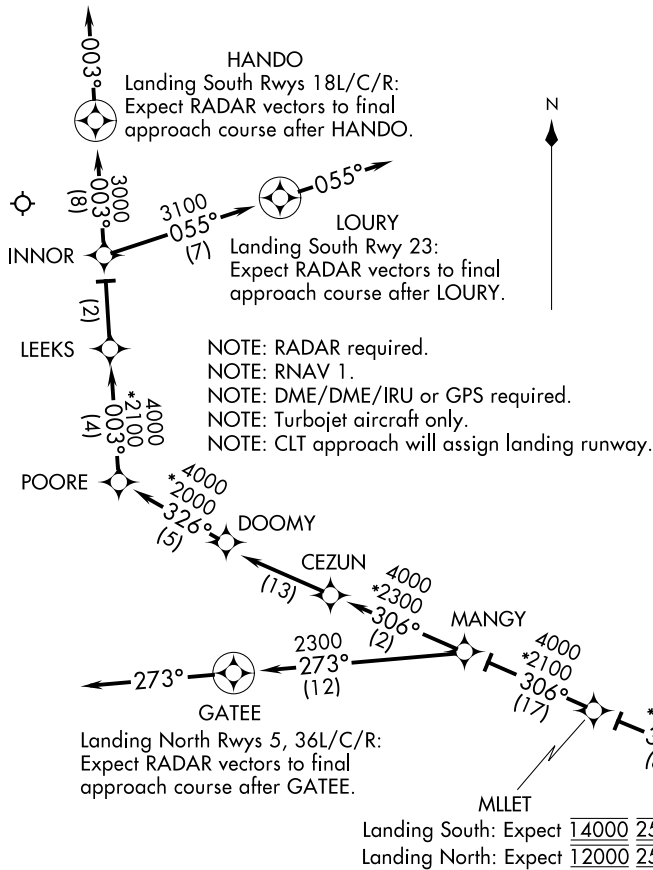
MLEET TWO ARRIVAL (RNAV)
(RYFLE,MLEET2) 27APR17

CHARLOTTE/DUGLAS INTL (CLT)
CHARLOTTE/DUGLAS INTL (CLT)

(RYFLE,MLEET2) 22111
MLEET TWO ARRIVAL (RNAV)

AL-78 (FAA)

CHARLOTTE/DUGLAS INTL (CLT)
CHARLOTTE/DUGLAS INTL (CLT)



ARRIVAL ROUTE DESCRIPTION

OKNEE TRANSITION (OKNEE.MLEET2)
TORQD TRANSITION (TORQD.MLEET2)

CLT: From RYFLE on track 308° to YELLS, then on track 308° to MLEET, then on track 306° to MANGY.

LANDING RWYS 18L/C/R: From MANGY on track 306° to CEZUN, then on track 306° to DOOMY, then on track 326° to POORE, then on track 003° to LEEKS, then on track 003° to INNOR, then on track 003° to HANDO, then on track 003°. Expect RADAR vectors to final approach course.

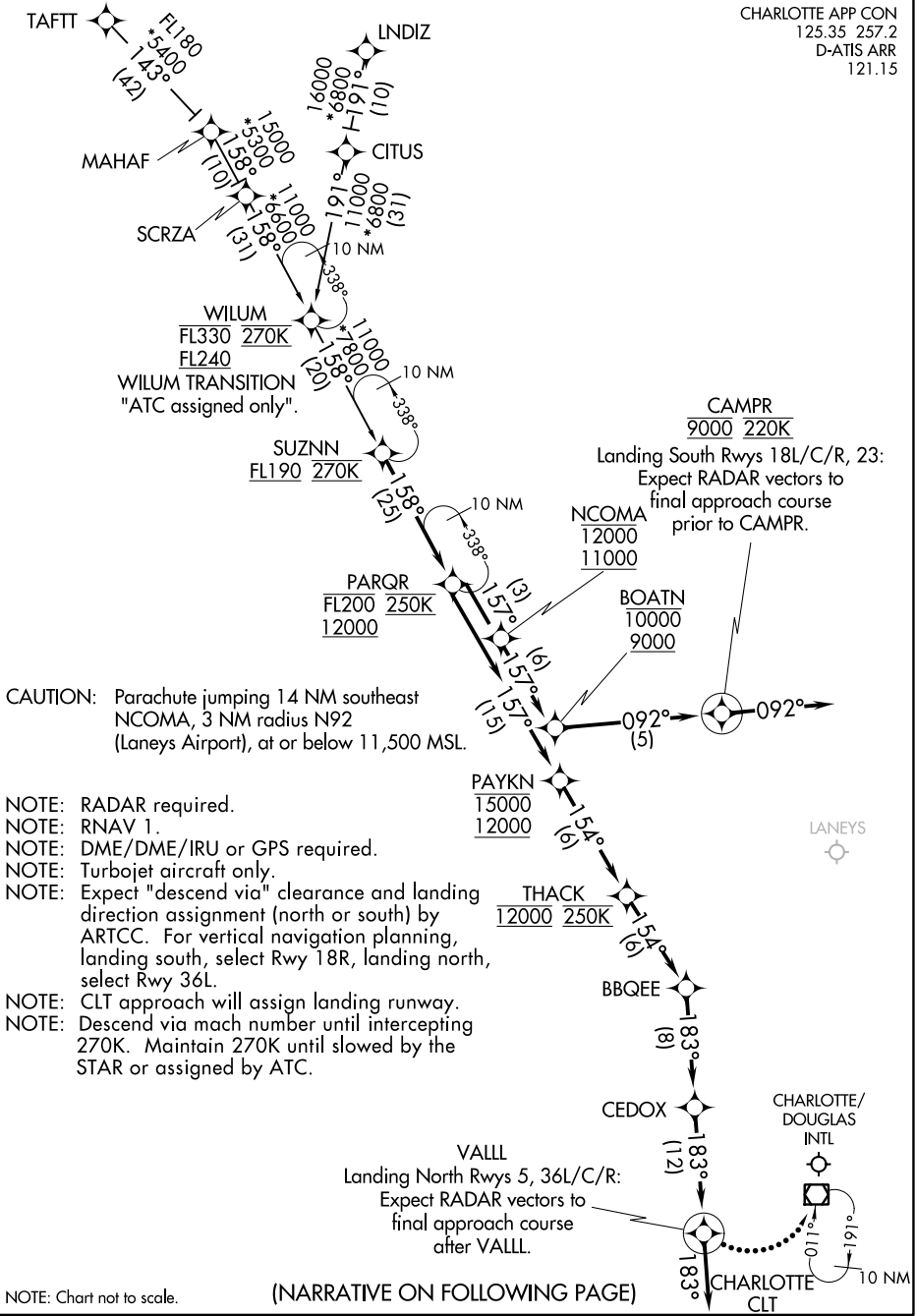
LANDING RWY 23: From MANGY on track 306° to CEZUN, then on track 306° to DOOMY, then on track 326° to POORE, then on track 003° to LEEKS, then on track 003° to INNOR, then on track 055° to LOURY, then on track 055°. Expect RADAR vectors to final approach course.

LANDING RWYS 5, 36L/C/R: From MANGY on track 273° to GATEE, then on track 273°. Expect RADAR vectors to final approach course.

NOTE: Chart not to scale.

PARQR THREE ARRIVAL (RNAV)

CHARLOTTE APP CON
125.35 257.2
D-ATIS ARR
121.15



SE-2, 22 FEB 2024 to 21 MAR 2024

SE-2, 22 FEB 2024 to 21 MAR 2024

PARQR THREE ARRIVAL (RNAV)

PARQR THREE ARRIVAL (RNAV)

ARRIVAL ROUTE DESCRIPTION

LNDIZ TRANSITION (LNDIZ.PARQR3)

TAFTT TRANSITION (TAFTT.PARQR3)

WILUM TRANSITION (WILUM.PARQR3)

From SUZNN on track 158° to cross PARQR between 12000 and FL200 and at 250K.

LANDING: RWYS 5, 36L/C/R: From PARQR on track 157° to cross PAYKN between 12000 and 15000, then on track 154° to cross THACK at 12000 and at 250K, then on track 154° BBQEE, then on track 183° to CEDOX, then on track 183° to VALLL, then on track 183°. Expect RADAR vectors to final approach course.

LANDING: RWYS 18L/C/R, 23: From PARQR on track 157° to cross NCOMA between 11000 and 12000, then on track 157° to cross BOATN between 9000 and 10000, then on track 092° to cross CAMPR at 9000 and at 220K, then on track 092°. Expect RADAR vectors to final approach course.

LOST COMMUNICATION: After VALLL turn left direct CLT VOR/DME and hold maintain 12000.

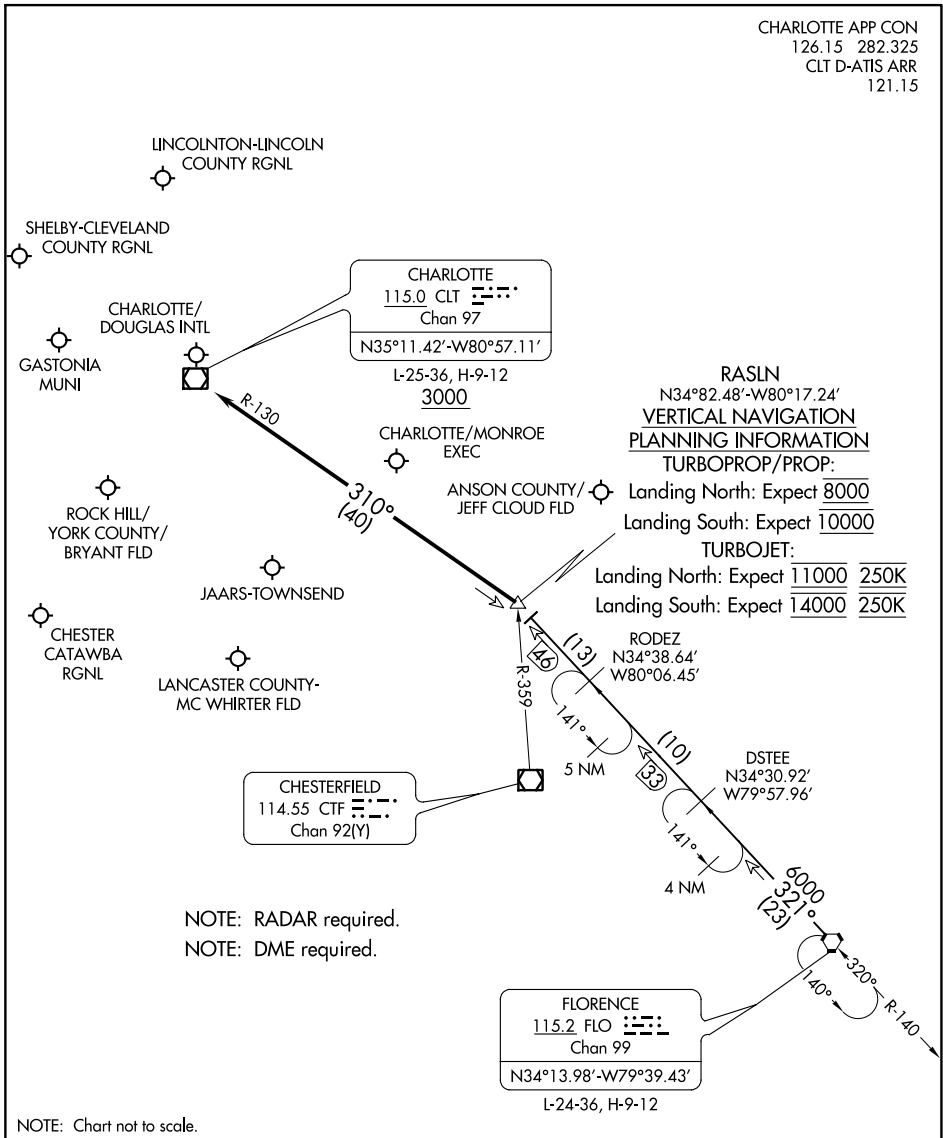
SE-2, 22 FEB 2024 to 21 MAR 2024

SE-2, 22 FEB 2024 to 21 MAR 2024

RASLN THREE ARRIVAL

CHARLOTTE, NORTH CAROLINA

CHARLOTTE APP CON
126.15 282.325
CLT D-ATIS ARR
121.15



SE-2, 22 FEB 2024 to 21 MAR 2024

SE-2, 22 FEB 2024 to 21 MAR 2024

ARRIVAL ROUTE DESCRIPTION

FLORENCE TRANSITION (FLO.RASLN3): From over FLO VORTAC on FLO R-321 to RASLN INT. Thence

. . . . from RASLN on CLT R-130 to cross CLT VOR/DME at or above 3000. Expect RADAR vectors to destination airport or final approach course prior to CLT VOR/DME.

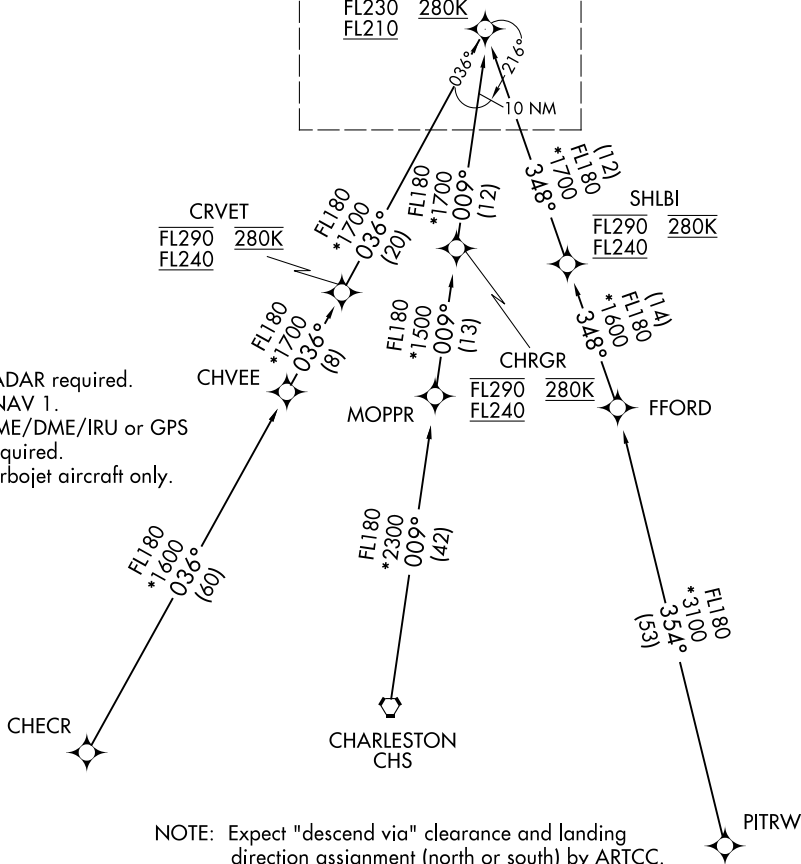
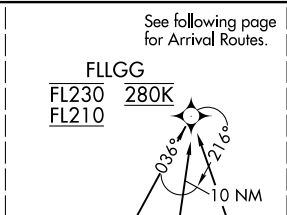
RASLN THREE ARRIVAL

(RASLN.RASLN3) 17AUG17

CHARLOTTE, NORTH CAROLINA

STOCR THREE ARRIVAL (RNAV) Transition Routes

CHARLOTTE APP CON
126.15 282.325
D-ATIS ARR
121.15



NOTE: RADAR required.
 NOTE: RNAV 1.
 NOTE: DME/DME/IRU or GPS required.
 NOTE: Turbojet aircraft only.

NOTE: Expect "descend via" clearance and landing direction assignment (north or south) by ARTCC. For vertical navigation planning, landing south, select Rwy 23, landing north, select Rwy 36R.
 NOTE: Descend via mach number until intercepting 280K. Maintain 280K until slowed by the STAR or assigned by ATC.
 NOTE: CLT approach will assign landing runway.

NOTE: Chart not to scale.

CHARLESTON TRANSITION (CHS.STOCR3)
CHECR TRANSITION (CHECR.STOCR3)
PITRW TRANSITION (PITRW.STOCR3)

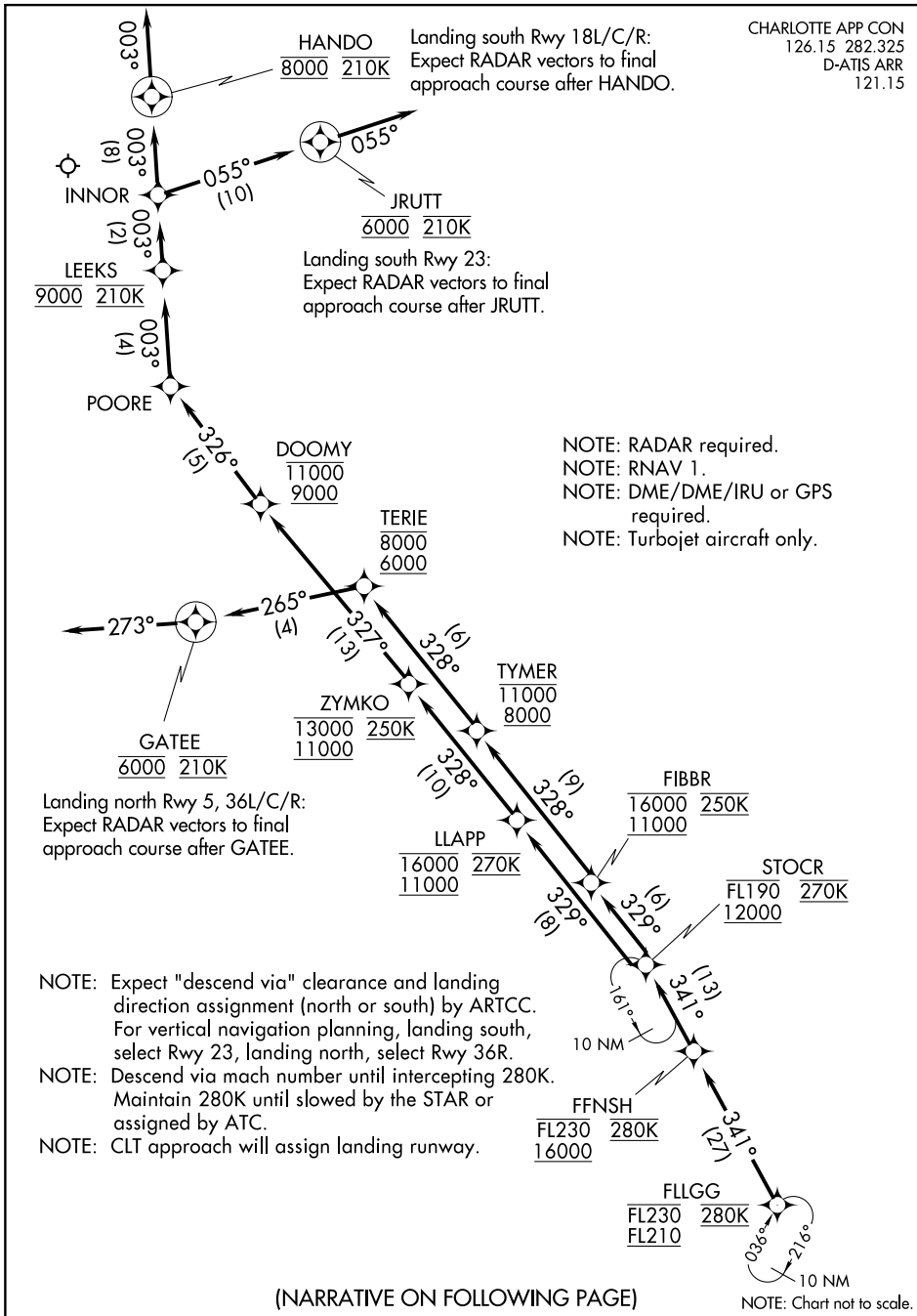
(CONTINUED ON FOLLOWING PAGES)

SE-2, 22 FEB 2024 to 21 MAR 2024

SE-2, 22 FEB 2024 to 21 MAR 2024

STOCR THREE ARRIVAL (RNAV) Arrival Routes

CHARLOTTE APP CON
126.15 282.325
D-ATIS ARR
121.15



SE-2, 22 FEB 2024 to 21 MAR 2024

SE-2, 22 FEB 2024 to 21 MAR 2024

STOCR THREE ARRIVAL (RNAV) Arrival Routes

STOCR THREE ARRIVAL (RNAV)

ARRIVAL ROUTE DESCRIPTION

From FLLGG on track 341° to cross FFNSH between 16000 and 23000 and at 280K, then on track 341° to cross STOCR between 12000 and FL190 and at 270K.

LANDING NORTH: RWY 5, 36L/C/R: From STOCR on track 329° to cross FIBBR between 11000 and 16000 and at 250K, then on track 328° to cross TYMER between 8000 and 11000, then on track 328° to cross TERIE between 6000 and 8000, then on track 265° to cross GATEE at 6000 and at 210K, then on track 273°. Expect RADAR vectors to final approach course.

LANDING SOUTH: RWY 18L/C/R: From STOCR on track 329° to cross LLAPP between 11000 and 16000 and at 270K, then on track 328° to cross ZYMKO between 11000 and 13000 and at 250K, then on track 327° to cross DOOMY between 9000 and 11000, then on track 326° to POORE, then on track 003° to cross LEEKS at 9000 and at 210K, then on track 003° to INNOR, then on track 003° to cross HANDO at 8000 and at 210K, then on track 003°. Expect RADAR vectors to final approach course.

LANDING SOUTH: RWY 23: From STOCR on track 329° to cross LLAPP between 11000 and 16000 and at 270K, then on track 328° to cross ZYMKO between 11000 and 13000 and at 250K, then on track 327° to cross DOOMY between 9000 and 11000, then on track 326° to POORE, then on track 003° to cross LEEKS at 9000 and at 210K, then on track 003° to INNOR, then on track 055° to cross JRUTT at 6000 and at 210K, then on track 055°. Expect RADAR vectors to final approach course.

SE-2, 22 FEB 2024 to 21 MAR 2024

SE-2, 22 FEB 2024 to 21 MAR 2024