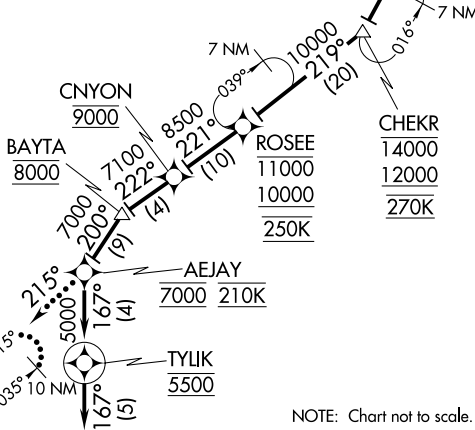
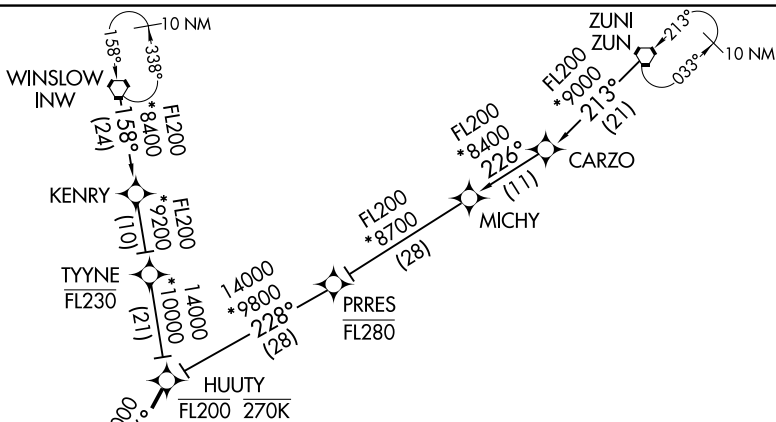


HUITY ONE ARRIVAL (RNAV)
 (HUITY.HUITY1) 31MAY12

PHOENIX APP CON
 124.9 353.8
 PHOENIX-MESA GATEWAY TOWER *
 120.6 289.4
 PHOENIX-MESA GATEWAY GND CON
 128.25 275.8
 CHD ATIS *
 128.325
 FFZ ATIS
 118.25
 IWA ATIS *
 133.5 270.275



NOTE: Turbojet aircraft only.
 NOTE: GPS required.
 NOTE: RADAR required.
 NOTE: RNAV 1.



ARRIVAL ROUTE DESCRIPTION

WINSLOW TRANSITION (INW.HUITY1)
ZUNI TRANSITION (ZUN.HUITY1)

From HUITY on track 196° to CHEKR. Cross CHEKR between 12000 and 14000 and at 270 KTS. From CHEKR via 219° track to ROSEE, cross ROSEE between 10000 and 11000 and at 250 KTS, from ROSEE via 221° track to CNYON, cross CNYON at 9000, from CNYON via 222° track to BAYTA, cross BAYTA at 8000, from BAYTA via 200° track to AEJAY, cross AEJAY at 7000 and at 210 KTS, from AEJAY via 167° track to TYLIK, cross TYLIK at 5500, then on 167° heading. Expect RADAR vectors to final approach course.

LOST COMMUNICATIONS:

After AEJAY on track 215° direct IWA VORTAC. Hold NE, LT, 215° inbound, maintain 7000.

NOTE: Chart not to scale.

HUITY ONE ARRIVAL (RNAV)
 (HUITY.HUITY1) 21112

AL-74 (FAA)

PHOENIX, ARIZONA

PHOENIX, ARIZONA

BLYTHE FIVE ARRIVAL
(BLH.BLH5) 27APR17

ARRIVAL ROUTE DESCRIPTION

BLYTHE TRANSITION (BLH.BLH5): From over BLH VORTAC on BLH R-082 to SALOM, then on GBN R-285 and IWA R-256 to ARLIN. Thence . . .

PHOENIX SKY HARBOR INTL: Rwy 7L/R or 8: From over ARLIN, expect vectors to final approach course; Rwy 25L/R or 26: From over ARLIN, on IWA R-256 to TUKEE. Expect vectors to final approach course prior to TUKEE.

SATELLITE AIRPORTS: Expect vectors after passing SALOM.

LOST COMMUNICATIONS: After ARLIN, on IWA R-256 and PXR R-143 to PXR VORTAC.

- PHOENIX APP CON 124.1 256.9
- PHOENIX TOWER 118.7 278.8 (Rwy 8-26)
- 120.9 254.3 (Rwy 7L-25R, 7R-25L)
- PHOENIX GND CON 119.75 269.2
- CHD ATIS 128.325
- FFZ ATIS 118.25
- DVT ATIS 126.5
- IWA ATIS * 133.5 270.275
- PHX D-ATIS 127.575
- SDL ATIS * 118.6

SALOM VERTICAL NAVIGATION PLANNING INFORMATION

Turboprop expect 17000
Turboprop landing KPHX expect vectors after SALOM.

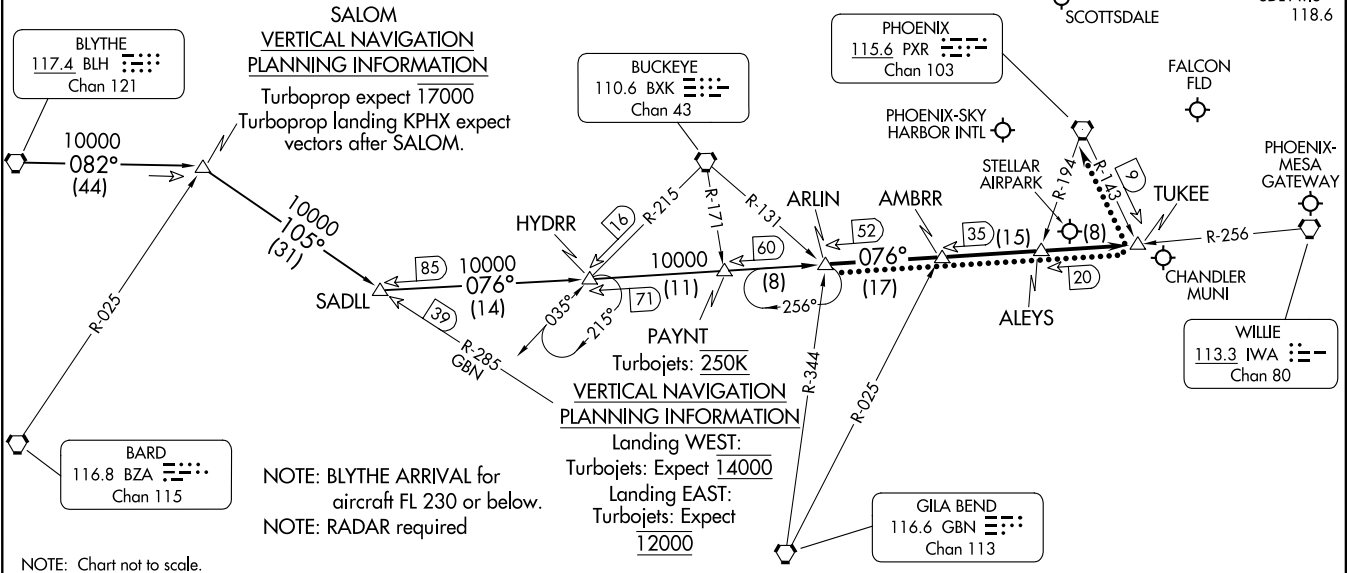
BUCKEYE
110.6 BXX
Chan 43

PHOENIX
115.6 PXR
Chan 103

PAYNT VERTICAL NAVIGATION PLANNING INFORMATION
Landing WEST:
Turbojets: Expect 14000
Landing EAST:
Turbojets: Expect 12000

WILLIE
113.3 IWA
Chan 80

GILA BEND
116.6 GBN
Chan 113



NOTE: Chart not to scale.

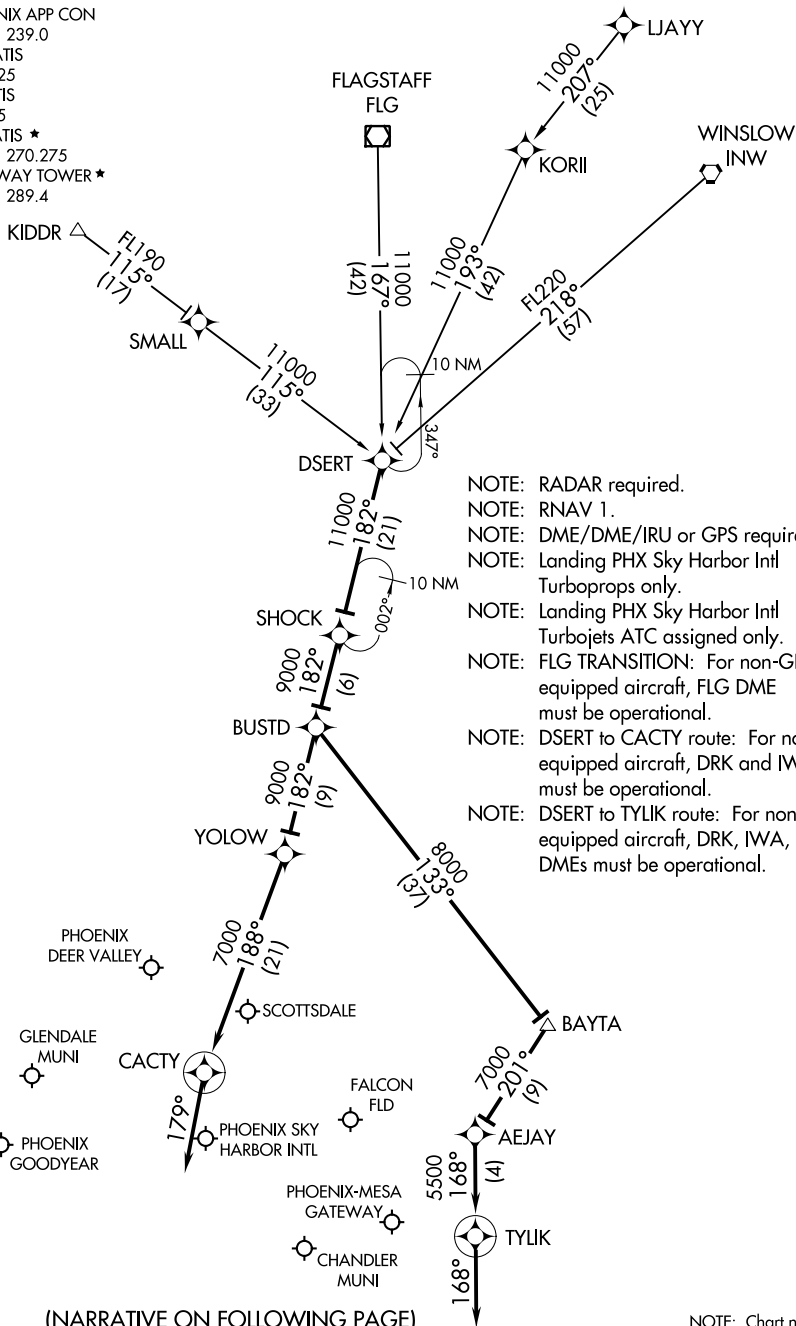
PHOENIX, ARIZONA

BLYTHE FIVE ARRIVAL
(BLH.BLH5) 23334

AL-322 (FAA)

PHOENIX, ARIZONA

PHOENIX APP CON
 120.7 239.0
 CHD ATIS
 128.325
 FFZ ATIS
 118.25
 IWA ATIS *
 133.5 270.275
 GATEWAY TOWER *
 120.6 289.4



- NOTE: RADAR required.
- NOTE: RNAV 1.
- NOTE: DME/DME/IRU or GPS required.
- NOTE: Landing PHX Sky Harbor Intl Turboprops only.
- NOTE: Landing PHX Sky Harbor Intl Turbojets ATC assigned only.
- NOTE: FLAG TRANSITION: For non-GPS equipped aircraft, FLG DME must be operational.
- NOTE: DSERT to CACTY route: For non-GPS equipped aircraft, DRK and IWA DMEs must be operational.
- NOTE: DSERT to TYLIK route: For non-GPS equipped aircraft, DRK, IWA, and PXR DMEs must be operational.

(NARRATIVE ON FOLLOWING PAGE)

NOTE: Chart not to scale.

SW-4, 22 FEB 2024 to 21 MAR 2024

SW-4, 22 FEB 2024 to 21 MAR 2024

ARRIVAL ROUTE DESCRIPTION

FLAGSTAFF TRANSITION (FLG.DSERT2)

KIDDR TRANSITION (KIDDR.DSERT2)

LJAYY TRANSITION (LJAYY.DSERT2)

WINSLOW TRANSITION (INW.DSERT2)

From DSERT on track 182° to SHOCK, then on track 182° to BUSTD.

LANDING AT KDVT/KSDL/KGEU/KFFZ/KCHD/KGYR/KPHX:

From BUSTD on track 182° to YOLOW, then on track 188° to CACTY then on track 179°. Expect RADAR vectors.

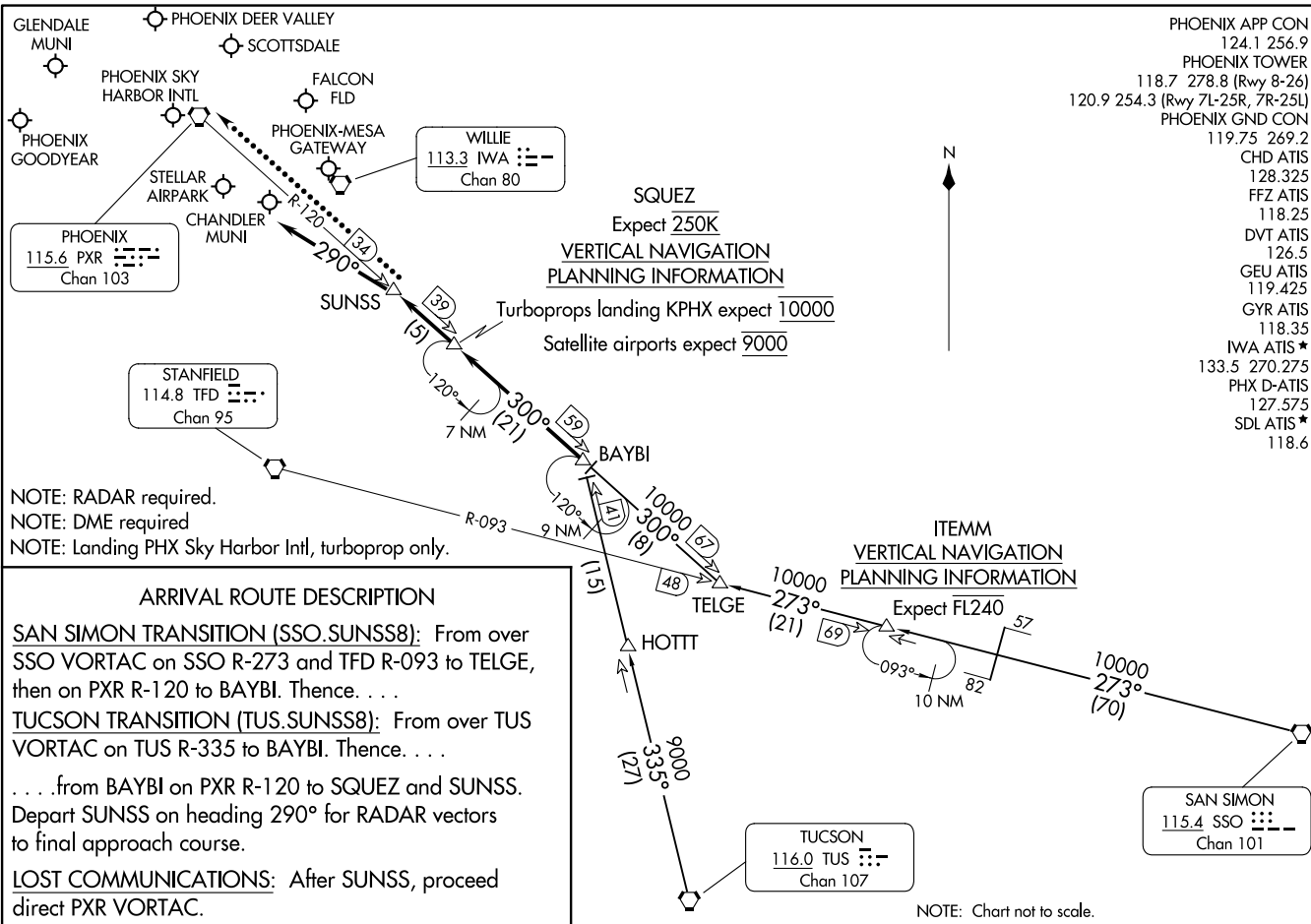
LANDING AT KIWA: From BUSTD on track 133° to BAYTA, then on track 201° to AEJAY, then on track 168° to TYLIK, then on track 168°. Expect RADAR vectors.

SW-4, 22 FEB 2024 to 21 MAR 2024

SW-4, 22 FEB 2024 to 21 MAR 2024

SUNSS EIGHT ARRIVAL
(BAYBI.SUNSS8) 27APR17

(BAYBI.SUNSS8) 23334
SUNSS EIGHT ARRIVAL



NOTE: RADAR required.
 NOTE: DME required
 NOTE: Landing PHX Sky Harbor Intl, turboprop only.

ARRIVAL ROUTE DESCRIPTION
SAN SIMON TRANSITION (SSO.SUNSS8): From over SSO VORTAC on SSO R-273 and TFD R-093 to TELGE, then on PXR R-120 to BAYBI. Thence. . . .
TUCSON TRANSITION (TUS.SUNSS8): From over TUS VORTAC on TUS R-335 to BAYBI. Thence. . . .
 . . . from BAYBI on PXR R-120 to SQUEZ and SUNSS. Depart SUNSS on heading 290° for RADAR vectors to final approach course.
LOST COMMUNICATIONS: After SUNSS, proceed direct PXR VORTAC.

- PHOENIX APP CON 124.1 256.9
- PHOENIX TOWER 118.7 278.8 (Rwy 8-26)
- 120.9 254.3 (Rwy 7L-25R, 7R-25L)
- PHOENIX GND CON 119.75 269.2
- CHD ATIS 128.325
- FFZ ATIS 118.25
- DVT ATIS 126.5
- GEU ATIS 119.425
- GYR ATIS 118.35
- IWA ATIS ★ 133.5 270.275
- PHX D-ATIS 127.575
- SDL ATIS ★ 118.6

ITEMM
VERTICAL NAVIGATION PLANNING INFORMATION
 Expect FL240

TUCSON
 116.0 TUS :::-
 Chan 107

SAN SIMON
 115.4 SSO :::-
 Chan 101

NOTE: Chart not to scale.

PHOENIX, ARIZONA

PHOENIX, ARIZONA

AL-322 (FAA)