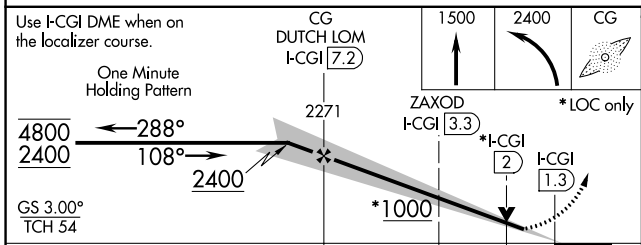
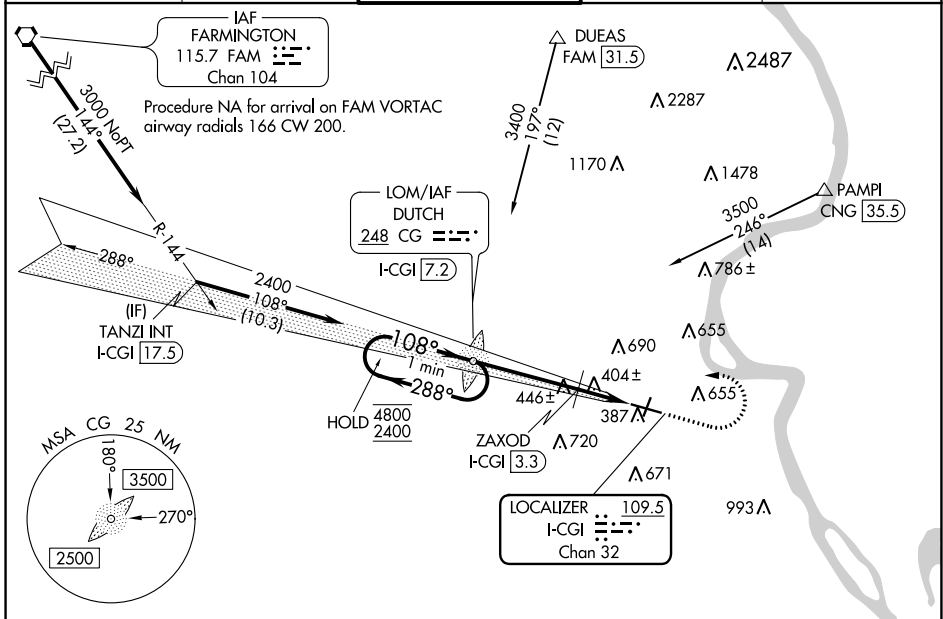


LOC/DME I-CGI	APP CRS	Rwy Idg	6500
<b>109.5</b>	<b>108°</b>	TDZE	<b>337</b>
Chan <b>32</b>		Apt Elev	<b>342</b>

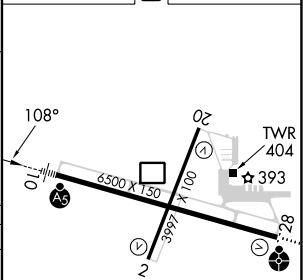
# ILS or LOC RWY 10

CAPE GIRARDEAU RGNL (CGI)

ADF required.		MALSR		MISSED APPROACH: Climb to 1500 then climbing left turn to 2400 direct DUTCH LOM/I-CGI 7.2 DME and hold.	
<p>▼ For inop ALS, increase S-LOC 10 Cat C/D visibility to 1 1/2 SM.</p> <p>▲</p>					
ASOS	MEMPHIS CENTER	CAPE GIRARDEAU TOWER *	GND CON	UNICOM	
<b>120.55</b>	<b>133.65 292.15</b>	<b>125.525 (CTAF) 1</b>	<b>121.6</b>	<b>122.95</b>	



ELEV 342	D	TDZE 337
----------	---	----------



CATEGORY	A	B	C	D
S-ILS 10		537-1/2	200 (200-1/2)	
S-LOC 10	1000-1/2	663 (700-1/2)	1000-1/2	663 (700-1/2)
<b>C</b> CIRCLING	1000-1	658 (700-1)	1000-1 7/8 658 (700-1 7/8)	1080-2 1/4 738 (800-2 1/4)
ZAXOD FIX MINIMUMS				
S-LOC 10		660-1/2	323 (400-1/2)	
<b>C</b> CIRCLING	860-1 518 (600-1)	960-1 618 (700-1)	1000-1 3/4 658 (700-1 3/4)	1080-2 1/4 738 (800-2 1/4)

MIRL Rwy 2-20	
HIRL Rwy 10-28	
FAF to MAP 5.9 NM	
Knots	60 90 120 150 180
Min:Sec	5:54 3:56 2:57 2:22 1:58

NC-3, 22 FEB 2024 to 21 MAR 2024

NC-3, 22 FEB 2024 to 21 MAR 2024

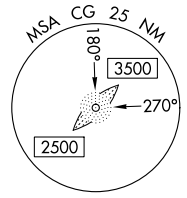
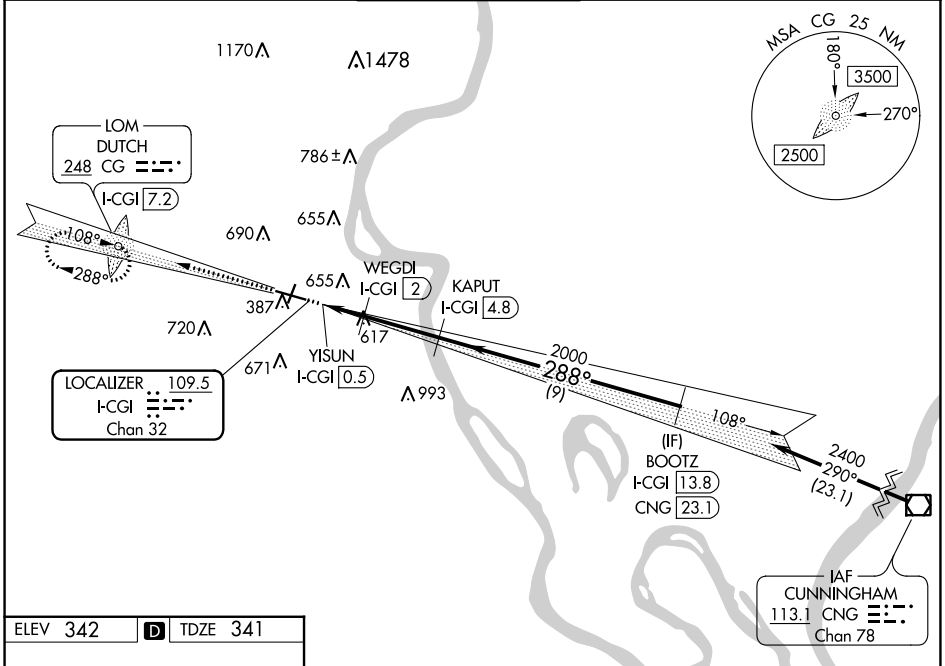
LOC/DME I-CGI <b>109.5</b> Chan <b>32</b>	APP CRS <b>288°</b>	Rwy Idg TDZE Apt Elev	<b>6500</b> <b>341</b> <b>342</b>
---	------------------------	-----------------------------	---

# LOC BC RWY 28

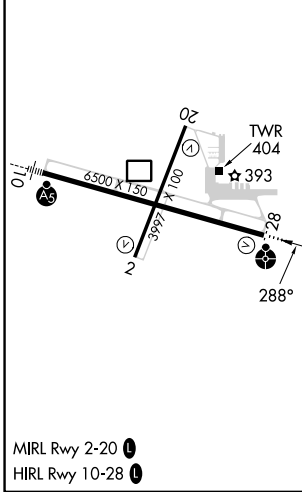
CAPE GIRARDEAU RGNL (CGI)

DME required.		ODALS	MISSED APPROACH: Climb to 2400 on I-CGI west course (288°) to DUTCH LOM/I-CGI 7.2 DME and hold.
▼ ▲ Rwy 28 helicopter visibility reduction below ¾ SM NA.		☼	

ASOS <b>120.55</b>	MEMPHIS CENTER <b>133.65 292.15</b>	CAPE GIRARDEAU TOWER * <b>125.525</b> (CTAF) <b>0</b>	GND CON <b>121.6</b>	UNICOM <b>122.95</b>
-----------------------	--	--	-------------------------	-------------------------

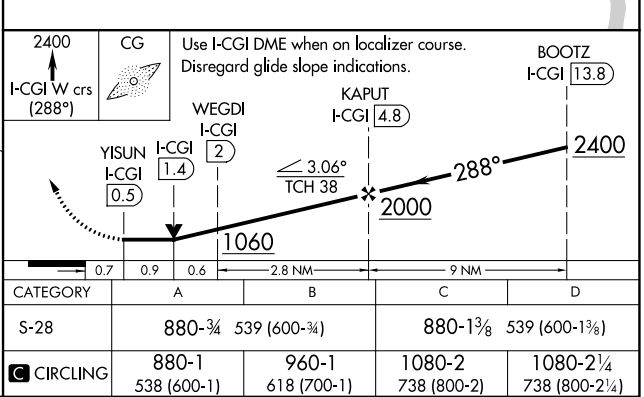


ELEV 342	D	TDZE 341
----------	---	----------



Procedure NA for arrival on CNG VOR/DME airway radials 240 CW 346.

## BACK COURSE



NC-3, 22 FEB 2024 to 21 MAR 2024

NC-3, 22 FEB 2024 to 21 MAR 2024

WAAS CH <b>61399</b> <b>W10A</b>	APP CRS <b>108°</b>	Rwy Idg <b>6500</b> TDZE <b>337</b> Apt Elev <b>342</b>
--	------------------------	---

# RNAV (GPS) RWY 10

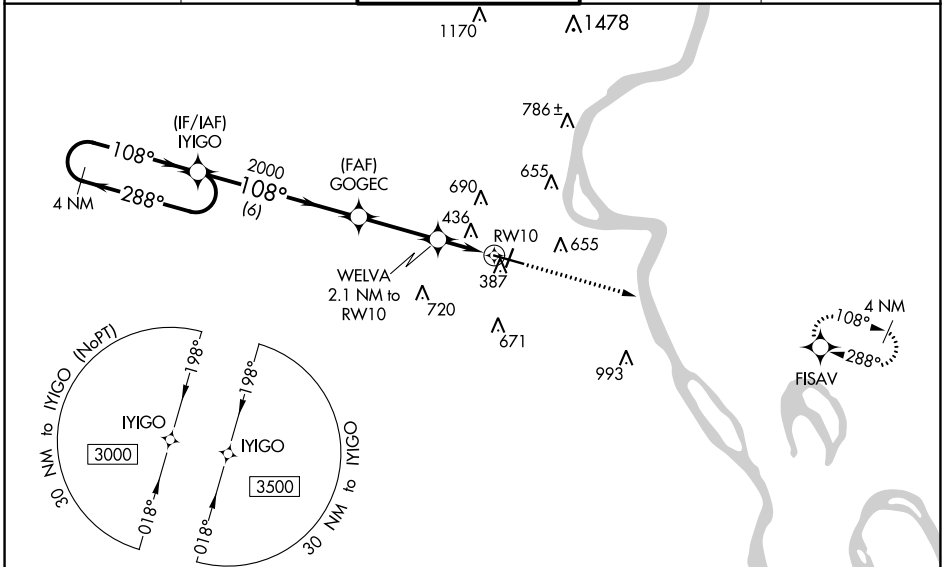
CAPE GIRARDEAU RGNL (CGI)

**⚠** For uncompensated Baro-VNAV systems, LNAV/VNAV NA below -17°C (2°F) or above 54°C (130°F). DME/DME RNP-0.3 NA. When local altimeter setting not received, use Cairo Rgnl altimeter setting and increase all DA 48 feet and all MDA 60 feet; increase LNAV Cat C/D visibilities 1/8 mile and Circling Cat C/D visibility 1/4 mile. Baro-VNAV and VDP NA when using Cairo Rgnl altimeter setting. For inop MALS/R, increase LNAV/VNAV visibility all Cats to 7/8 and LNAV Cats C/D visibility to 1 mile. For inop MALS/R when using Cairo Rgnl altimeter setting, increase LNAV Cats C/D visibility to 1 1/8 mile.



**MISSED APPROACH:**  
Climb to 3000 direct FISAV and hold.

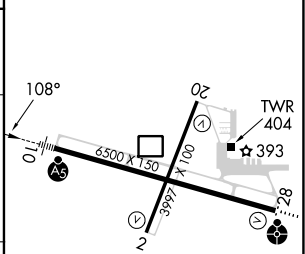
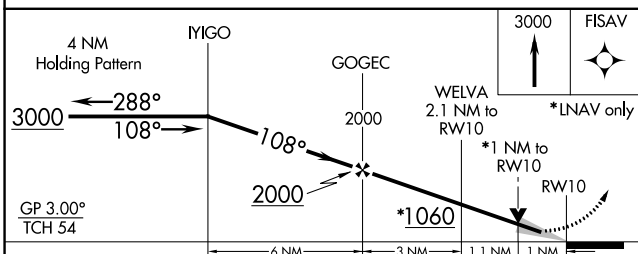
ASOS <b>120.55</b>	MEMPHIS CENTER <b>133.65 292.15</b>	<b>CAPE GIRARDEAU TOWER ★</b> <b>125.525 (CTAF) 0</b>	GND CON <b>121.6</b>	UNICOM <b>122.95</b>
-----------------------	--	--	-------------------------	-------------------------



NC-3, 22 FEB 2024 to 21 MAR 2024

NC-3, 22 FEB 2024 to 21 MAR 2024

ELEV 342	<b>D</b> TDZE 337
----------	-------------------



CATEGORY	A	B	C	D
LPV DA		537-1/2	200 (200-1/2)	
LNAV/VNAV DA		603-1/2	266 (300-1/2)	
LNAV MDA	700-1/2	363 (400-1/2)	700-5/8	363 (400-5/8)
<b>C</b> CIRCLING	860-1 518 (600-1)	960-1 618 (700-1)	1000-1 3/4 658 (700-1 3/4)	1080-2 1/4 738 (800-2 1/4)

MIRL Rwy 2-20 **0**  
HIRL Rwy 10-28 **0**

WAAS CH <b>93832</b> <b>W02A</b>	APP CRS <b>023°</b>	Rwy ldg TDZE <b>342</b> Apt Elev <b>342</b>
--	------------------------	---

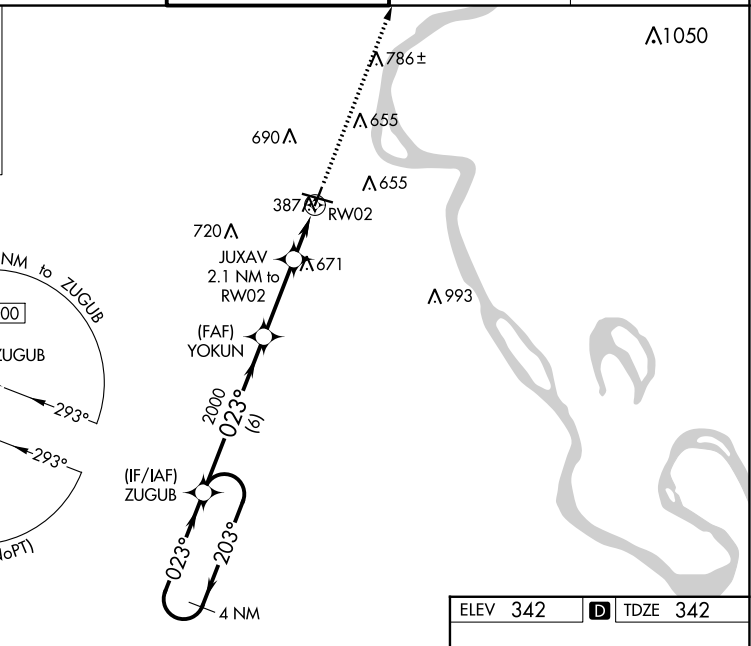
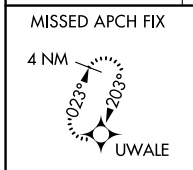
# RNAV (GPS) RWY 2

CAPE GIRARDEAU RGNL (CGI)

**⚠** For uncompensated Baro-VNAV systems, LNAV/VNAV NA below -17°C (2°F) or above 54°C (130°F). DME/DME RNP-0.3 NA. When local altimeter setting not received, use Cairo Rgnl altimeter setting and increase all DA 48 feet and all MDA 60 feet; increase LPV all Cats, LNAV/VNAV all Cats and LNAV Cat C/D visibilities 1/8 mile and Circling Cat C/D visibility 1/4 mile. Helicopter visibility reduction below 3/4 SM NA. Baro-VNAV and VDP NA when using Cairo Rgnl altimeter setting.

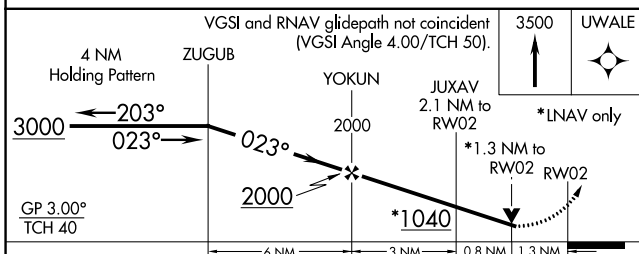
MISSED APPROACH: Climb to 3500 direct UWALE and hold, continue climb-in-hold to 3500.

ASOS <b>120.55</b>	MEMPHIS CENTER <b>133.65 292.15</b>	CAPE GIRARDEAU TOWER * <b>125.525 (CTAF) 0</b>	GND CON <b>121.6</b>	UNICOM <b>122.95</b>
-----------------------	--	---	-------------------------	-------------------------



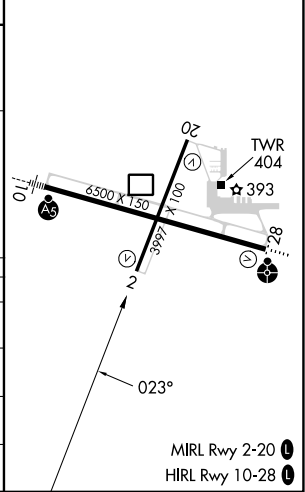
NC-3, 22 FEB 2024 to 21 MAR 2024

NC-3, 22 FEB 2024 to 21 MAR 2024



ELEV 342	<b>D</b> TDZE 342
----------	-------------------

CATEGORY	A	B	C	D
LPV DA		784-1½	442 (500-1½)	
LNAV/VNAV DA		839-1¾	497 (500-1¾)	
LNAV MDA	940-1	598 (600-1)	940-1¾	598 (600-1¾)
<b>C</b> CIRCLING	940-1 598 (600-1)	960-1 618 (700-1)	1000-1¾ 658 (700-1¾)	1080-2¼ 738 (800-2¼)



WAAS CH <b>42832</b> W20A	APP CRS <b>203°</b>	Rwy Idg TDZE Apt Elev	<b>3997</b> <b>339</b> <b>342</b>
---------------------------------	------------------------	-----------------------------	---

# RNAV (GPS) RWY 20

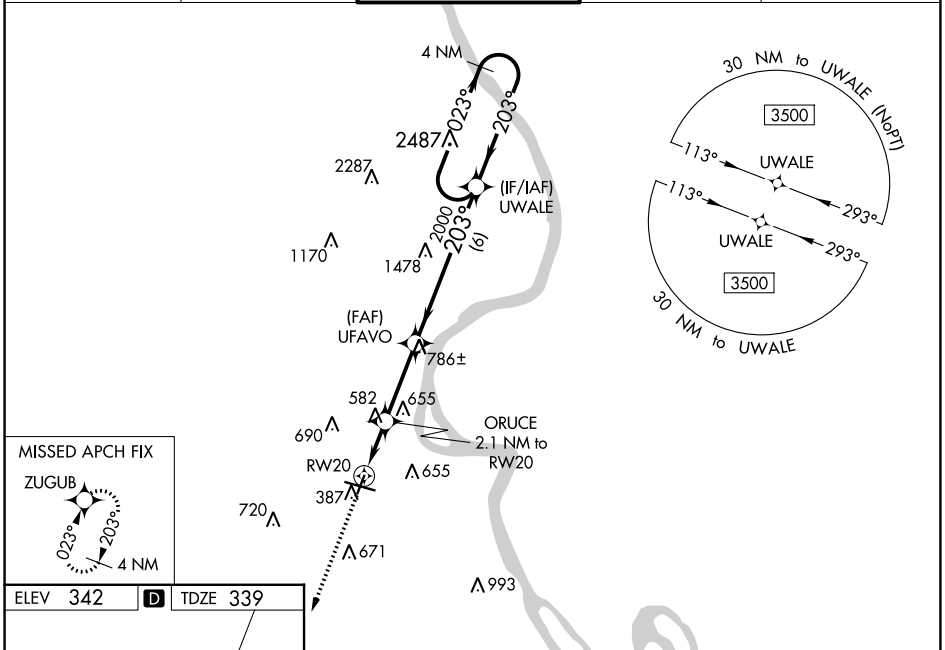
CAPE GIRARDEAU RGNL (CGI)

RNP APCH-GPS.

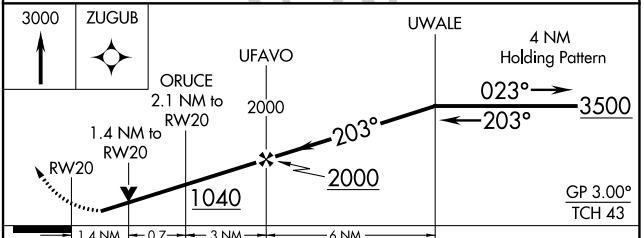
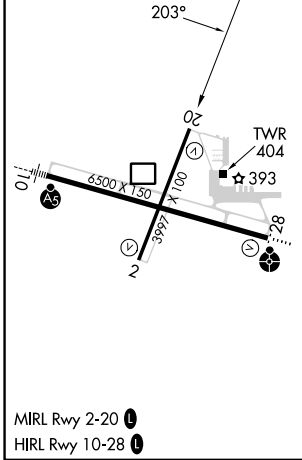
**⚠** For uncompensated Baro-VNAV systems, LNAV/VNAV NA below -17°C or above 54°C.  
**⚠** When local altimeter setting not received, use Cairo altimeter setting and increase LPV DA to 637 feet and all visibilities  $\frac{1}{8}$  SM; increase LNAV/VNAV DA to 652 feet; increase all MDAs 60 feet; increase LNAV and Circling visibility Cats C and D  $\frac{1}{4}$  SM. Rwy 20 helicopter visibility reduction below  $\frac{3}{4}$  SM NA. Baro-VNAV and VDP NA when using Cairo altimeter setting.

MISSED APPROACH: Climb to 3000 direct ZUGUB and hold.

ASOS <b>120.55</b>	MEMPHIS CENTER <b>133.65 292.15</b>	CAPE GIRARDEAU TOWER * <b>125.525 (CTAF)</b> <b>Ⓛ</b>	GND CON <b>121.6</b>	UNICOM <b>122.95</b>
-----------------------	--	--	-------------------------	-------------------------



ELEV 342	<b>D</b>	TDZE 339
----------	----------	----------



CATEGORY	A	B	C	D
LPV DA		589- $\frac{7}{8}$	250 (300- $\frac{7}{8}$ )	
LNAV/VNAV DA		604- $\frac{7}{8}$	265 (300- $\frac{7}{8}$ )	
LNAV MDA	840-1	501 (500-1)	840- $\frac{1}{8}$	501 (500- $\frac{1}{8}$ )
<b>C</b> CIRCLING	860-1 518 (600-1)	960-1 618 (700-1)	1000- $\frac{1}{4}$ 658 (700- $\frac{1}{4}$ )	1080- $\frac{1}{4}$ 738 (800- $\frac{1}{4}$ )

NC-3, 22 FEB 2024 to 21 MAR 2024

NC-3, 22 FEB 2024 to 21 MAR 2024

WAAS CH <b>90199</b> <b>W28A</b>	APP CRS <b>288°</b>	Rwy Idg TDZE <b>341</b> Apt Elev <b>342</b>
--	------------------------	---

# RNAV (GPS) RWY 28

CAPE GIRARDEAU RGNL (CGI)

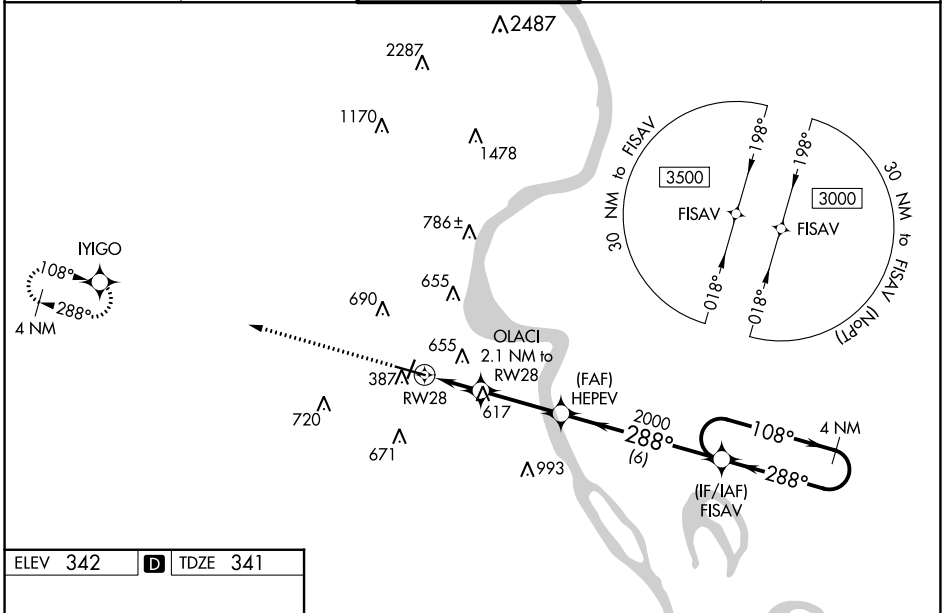
**⚠** DME/DME RNP-0.3 NA. When local altimeter setting not received, use Cairo Rgnl altimeter setting and increase all DA 48 feet and all MDA 60 feet; increase LPV all Cats, LNAV/VNAV all Cats, and Circling Cat C/D visibility ¼ mile and LNAV Cat C/D visibility ½ mile. VDP NA when using Cairo Rgnl altimeter setting. Helicopter visibility reduction below ¾ SM NA. For inop ODALS, increase LPV all Cats, LNAV/VNAV all Cats and LNAV Cat C/D visibilities ½ mile. When using Cairo Rgnl altimeter setting, for inop ODALS, increase LPV all Cats, LNAV/VNAV all Cats and LNAV Cat C/D visibilities ½ mile. Baro-VNAV NA.

ODALS



MISSED APPROACH:  
Climb to 3000 direct  
IYIGO and hold.

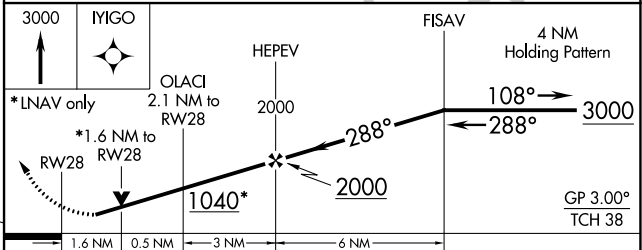
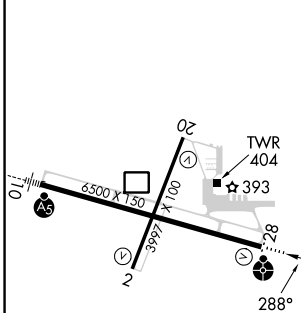
ASOS <b>120.55</b>	MEMPHIS CENTER <b>133.65 292.15</b>	CAPE GIRARDEAU TOWER * <b>125.525</b> (CTAF) <b>0</b>	GND CON <b>121.6</b>	UNICOM <b>122.95</b>
-----------------------	--	--	-------------------------	-------------------------



NC-3, 22 FEB 2024 to 21 MAR 2024

NC-3, 22 FEB 2024 to 21 MAR 2024

ELEV 342	<b>D</b>	TDZE 341
----------	----------	----------



CATEGORY	A	B	C	D
LPV DA		723-1½	382 (400-1½)	
LNAV/VNAV DA		821-1½	480 (500-1½)	
LNAV MDA	880-¾	539 (600-¾)	880-1¾	539 (600-1¾)
<b>C</b> CIRCLING	880-1 538 (600-1)	960-1 618 (700-1)	1000-1¾ 658 (700-1¾)	1080-2¼ 738 (800-2¼)

MIRL Rwy 2-20 **0**  
HIRL Rwy 10-28 **0**