

WAAS CH 45540 W34A	APP CRS 334°	Rwy Idg TDZE 20 Apt Elev 20	4477
--	------------------------	---	-------------

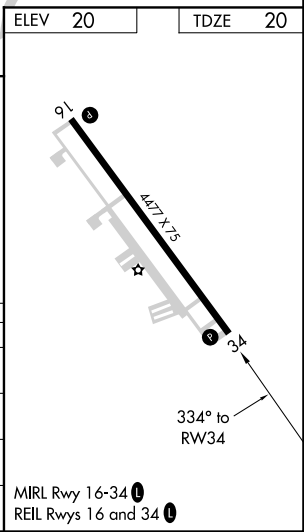
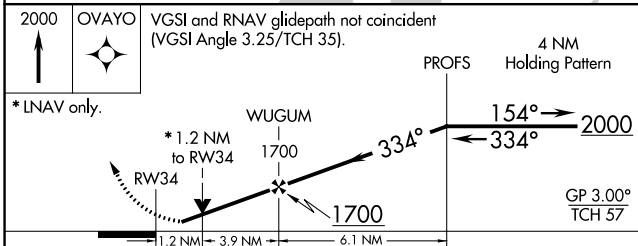
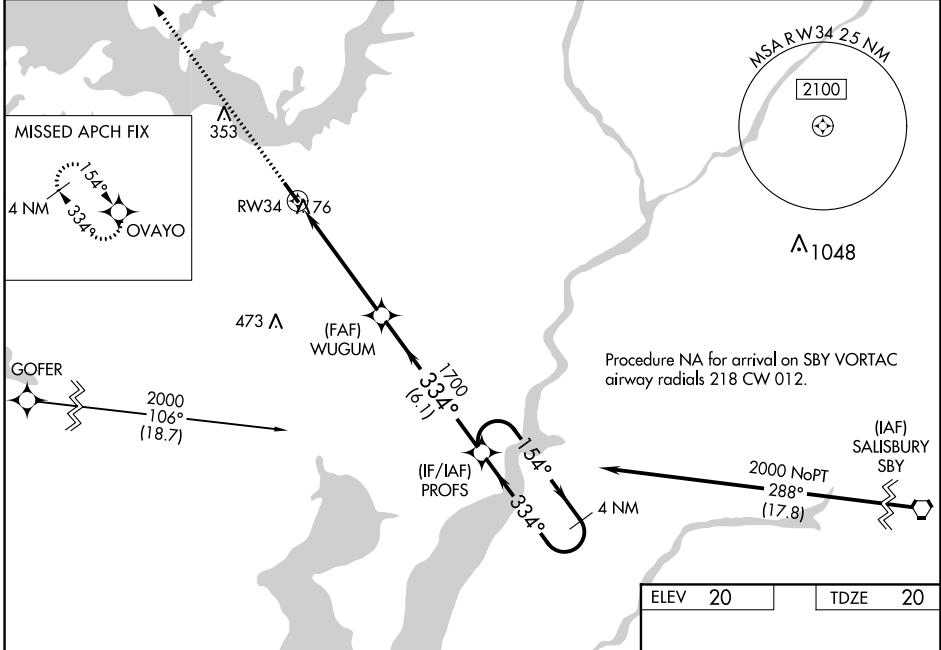
RNAV (GPS) RWY 34

CAMBRIDGE-DORCHESTER RGNL (CGE)

⚠ Circling NA at night. For uncompensated Baro-VNAV systems, LNAV/VNAV NA below -1.5°C (5°F) or above 54°C (130°F). Rwy 34 helicopter visibility reduction below ¾ SM NA. DME/DME RNP-0.3 NA.

MISSED APPROACH: Climb to 2000 direct OVAYO and hold.

AWOS-3 120.675	PATXENT APP CON * 121.0 250.3	UNICOM 122.7 (CTAF)	121.9 ⓪
--------------------------	---	-------------------------------	-----------------------



CATEGORY	A	B	C	D
LPV DA		286-7/8	266 (300-7/8)	
LNAV/VNAV DA		309-7/8	289 (300-7/8)	
LNAV MDA	480-1 460 (500-1)		480-1 3/8 460 (500-1 3/8)	
C CIRCLING	480-1 460 (500-1)		660-1 3/4 780-2 1/2 640 (700-1 3/4) 760 (800-2 1/2)	

NE-3, 17 JUN 2021 to 15 JUL 2021

NE-3, 17 JUN 2021 to 15 JUL 2021

RNAV (GPS)-A

CAMBRIDGE-DORCHESTER RGNL (CGE)

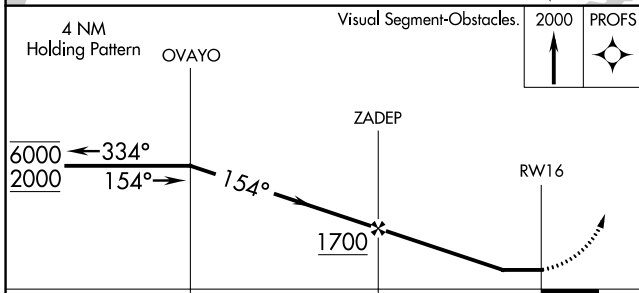
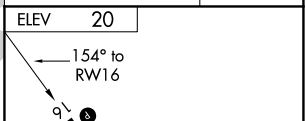
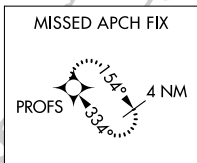
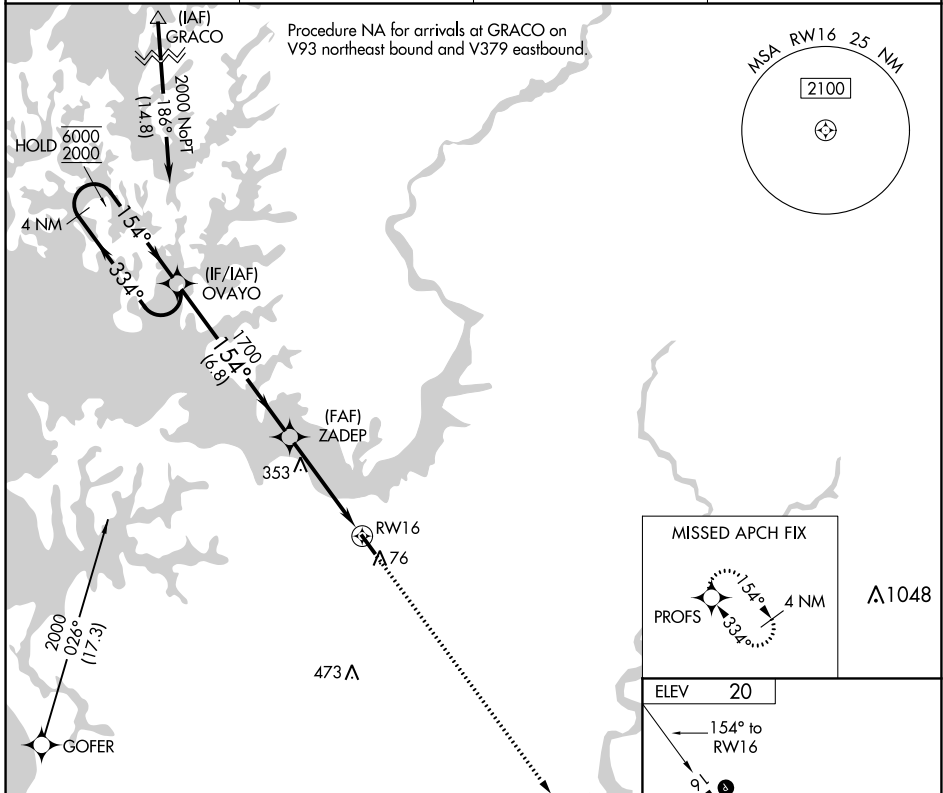
APP CRS	Rwy Idg	N/A
154°	TDZE	N/A
	Apt Elev	20

RNP APCH.

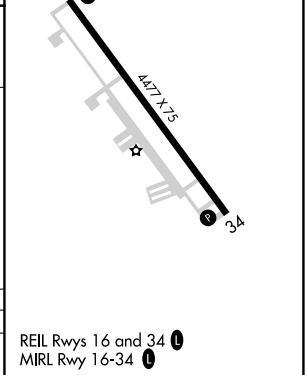
▼ Circling Rwy 16 NA at night.
▲ Rwy 16 helicopter visibility reduction below 1 SM NA.

MISSED APPROACH: Climb to 2000
 direct PROFS and hold.

AWOS-3 120.675	PATUXENT APP CON ★ 121.0 250.3	UNICOM 122.7 (CTAF)	121.9 0
--------------------------	--	-------------------------------	----------------



CATEGORY	A	B	C	D
C CIRCLING	740-1	720 (800-1)	740-2 720 (800-2)	780-2½ 760 (800-2½)



REIL Rwy 16 and 34 **0**
 MIRL Rwy 16-34 **0**

NE-3, 17 JUN 2021 to 15 JUL 2021

NE-3, 17 JUN 2021 to 15 JUL 2021