

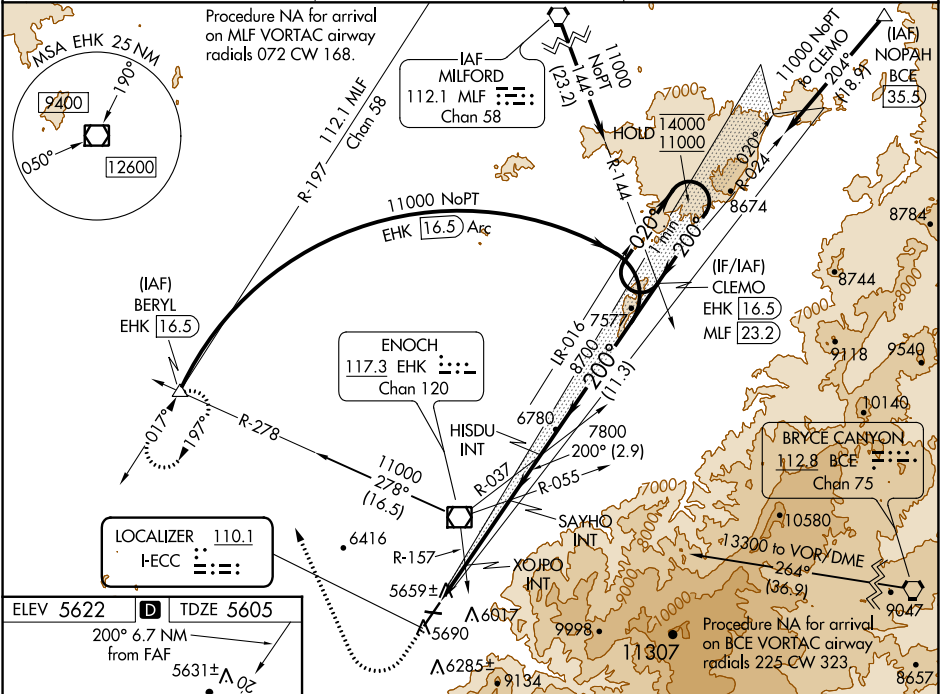
LOC I-ECC 110.1	APP CRS 200°	Rwy Idg TDZE Apt Elev	8653 5605 5622
---------------------------	------------------------	-----------------------------	---

ILS or LOC RWY 20

CEDAR CITY RGNL (CDC)

DME required.	MALSR	MISSED APPROACH: Climb to 6200 then climbing right turn to 10000 on heading 322° and on EHK R-278 to BERYL INT/EHK 16.5 DME and hold, continue climb-in-hold to 10000. † Missed approach requires minimum climb of 210 feet per NM to 7300.
<p>▼ XOJPO fix minimums (Dual VOR receivers required): For inop ALS, increase S-LOC 20 Cats C/D visibility to 1½ SM. For inop ALS, increase S-LOC 20 Cats C/D visibility to 2½ SM. # For inop ALS, increase S-ILS 20 visibility all Cats to 1 SM.</p>		

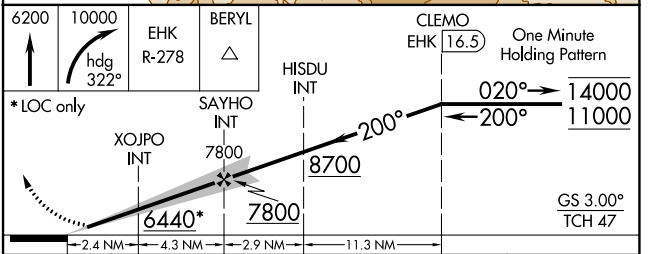
ASOS 119.025	SALT LAKE CITY CENTER 125.575 379.275	UNICOM 123.0 (CTAF) 0
------------------------	---	---------------------------------



SW-4, 22 FEB 2024 to 21 MAR 2024

SW-4, 22 FEB 2024 to 21 MAR 2024

ELEV 5622	TDZE 5605
200° 6.7 NM from FAF	5631±
4822 X 60 0.9% UP	26
8653 X 150 0.4% UP	
HIRL Rwy 2-20	MIRL Rwy 8-26
REIL Rwys 2, 8 and 26	
FAF to MAP 6.7 NM	
Knots	60 90 120 150 180
Min:Sec	6:42 4:28 3:21 2:41 2:14



CATEGORY	A	B	C	D
S-ILS 20†		5825-½	220 (300-½)	
S-ILS 20#		5882-½	277 (300-½)	
S-LOC 20	6440-½ 835 (900-½)	6440-¾ 835 (900-¾)	6440-1⅞ 835 (900-1⅞)	
XOJPO FIX MINIMUMS (DUAL VOR RECEIVERS REQUIRED)				
S-LOC 20	6100-½	495 (500-½)	6100-1	495 (500-1)

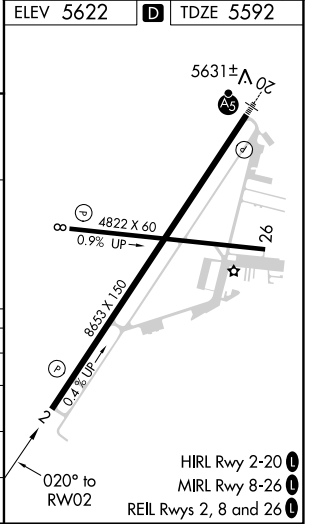
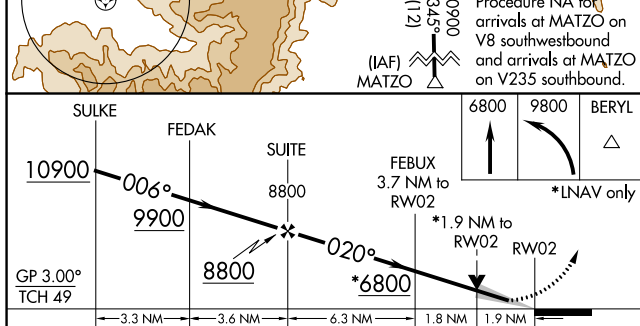
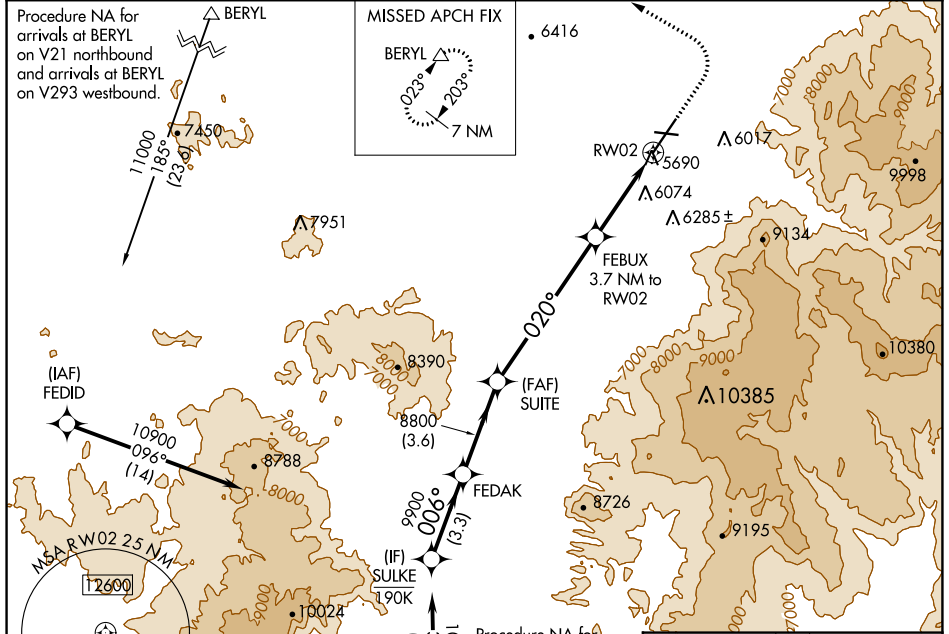
WAAS CH 49143	APP CRS 020°	Rwy Idg TDZE Apt Elev	8653 5592 5622
-------------------------	------------------------	-----------------------------	---

RNAV (GPS) RWY 2

CEDAR CITY RGNL (CDC)

RNP APCH.	MISSED APPROACH: Climb to 6800 then climbing left turn to 9800 direct BERYL and hold.
 Circling NA east of Rwy 2-20. Baro-VNAV NA.	

ASOS 119.025	SALT LAKE CITY CENTER 125.575 379.275	UNICOM 123.0 (CTAF) 0
------------------------	---	---------------------------------



CATEGORY	A	B	C	D
LPV DA	5867-7/8	275 (300-7/8)		
LNNAV/VNAV DA	6394-2 1/2	802 (800-2 1/2)		
LNNAV MDA	6240-1 648 (700-1)	6240-1 7/8 648 (700-1 7/8)		
CIRCLING	6240-1 618 (700-1)	6240-1 7/8 618 (700-1 7/8)	6240-2 618 (700-2)	

SW-4, 22 FEB 2024 to 21 MAR 2024

SW-4, 22 FEB 2024 to 21 MAR 2024

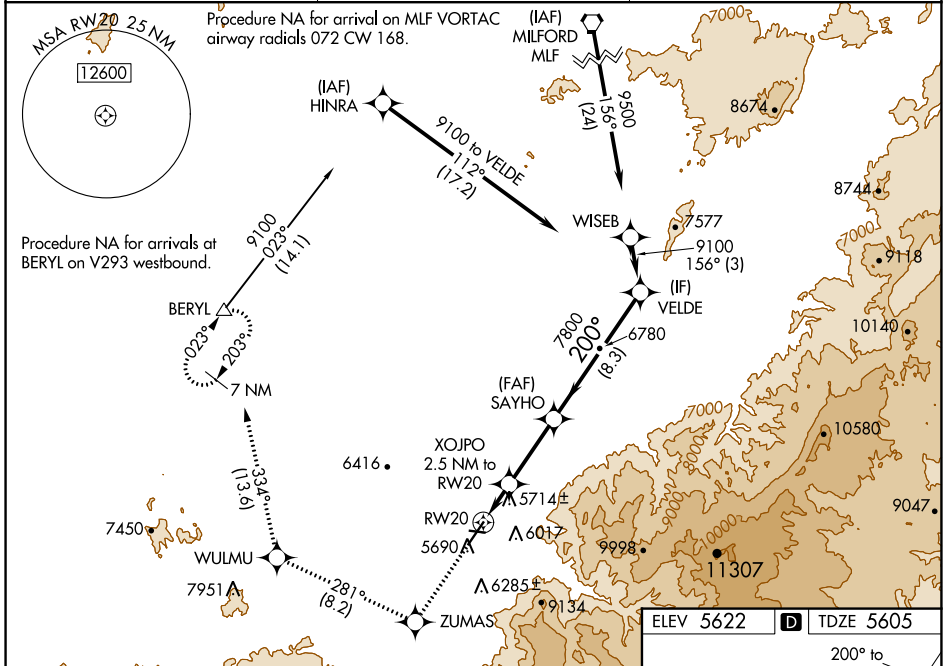
WAAS CH 72640 W20A	APP CRS 200°	Rwy Idg TDZE Apt Elev	8653 5605 5622
--	------------------------	-----------------------------	---

RNAV (GPS) RWY 20

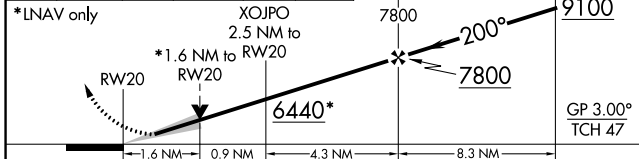
CEDAR CITY RGNL (CDC)

RNP APCH.	MALSR 	MISSED APPROACH: Climb to 9800 direct ZUMAS and on track 281° to WULMU and on track 334° to BERYL and hold.
		Circling NA east of Rwy 2-20. Baro-VNAV NA. For inop ALS, increase LNAV/VNAV all Cats visibility to 1½ SM and LNAV Cats C/D visibility to 1½ SM.

ASOS 119.025	SALT LAKE CITY CENTER 125.575 379.275	UNICOM 123.0 (CTAF) 0
------------------------	---	---------------------------------



9800	ZUMAS	WULMU	BERYL	SAYHO	VELDE
		tr 281°			



CATEGORY	A	B	C	D
LPV DA		5825-½	220 (300-½)	
LNAV/VNAV DA		6015-¾	410 (400-¾)	
LNAV MDA	6180-½	575 (600-½)	6180-¼	575 (600-¼)
CIRCLING	6180-1	558 (600-1)	6180-1½	6180-2
			558 (600-1½)	558 (600-2)

ELEV 5622		TDZE 5605
-----------	--	-----------

HIRL Rwy 2-20

MIRL Rwy 8-26

REIL Rwy 2, 8 and 26

SW-4, 22 FEB 2024 to 21 MAR 2024

SW-4, 22 FEB 2024 to 21 MAR 2024

VOR/DME EHK 117.3 Chan 120	APP CRS 177°	Rwy Idg TDZE Apt Elev 8653 5605 5622
---	------------------------	--

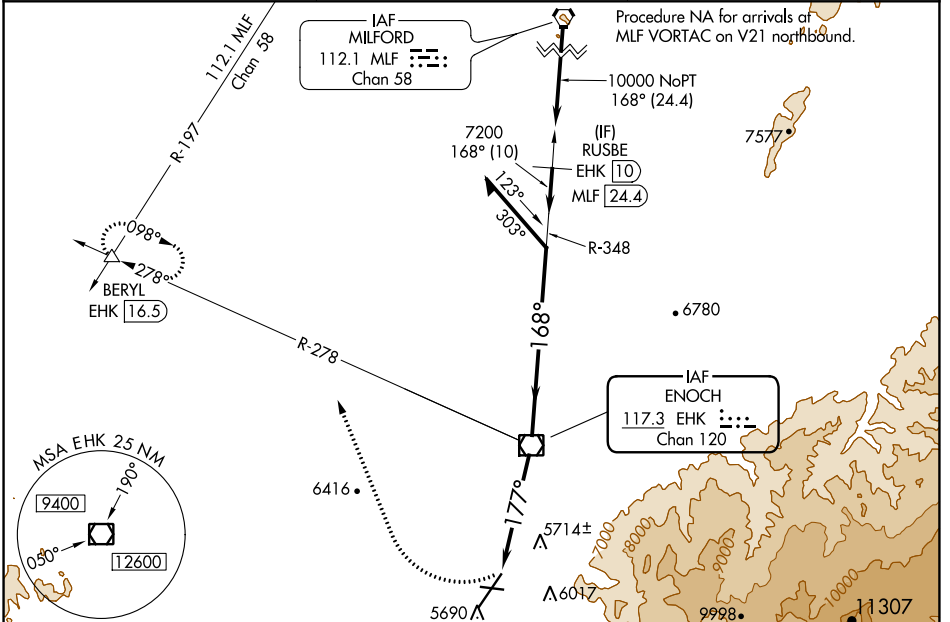
VOR RWY 20

CEDAR CITY RGNL (CDC)

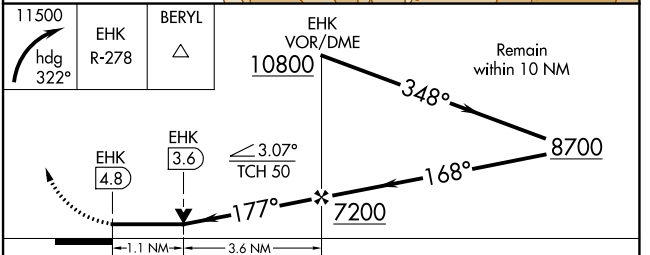
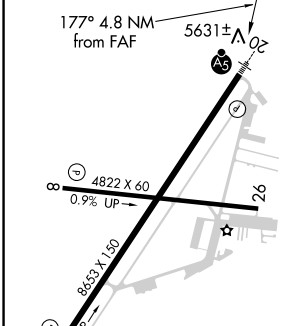
⚠ Circling NA southeast of Rwy 2-20. For inop ALS S-20* increase Cat C/D visibility to 1½ SM.

MALSRL MISSED APPROACH: Climbing right turn to 11 500 on heading 322° and on EHK VOR/DME R-278 to BERYL INT/EHK 16.5 DME and hold, continue climb-in-hold to 11 500.
*Missed approach requires minimum climb of 247 feet per NM to 7500.

ASOS 119.025	SALT LAKE CITY CENTER 125.575 379.275	UNICOM 123.0 (CTAF)
------------------------	---	-------------------------------



ELEV 5622	D	TDZE 5605
-----------	----------	-----------



CATEGORY	A	B	C	D
S-20*	6020-½ 415 (400-½)		6020-¾ 415 (400-¾)	
S-20	6300-½ 695 (700-½)		6300-1½ 695 (700-1½)	
C CIRCLING	6300-1 678 (700-1)		6300-2 678 (700-2)	6300-2½ 678 (700-2½)

FAF to MAP 4.8 NM					
Knots	60	90	120	150	180
Min:Sec	4:48	3:12	2:24	1:55	1:36

SW-4, 22 FEB 2024 to 21 MAR 2024

SW-4, 22 FEB 2024 to 21 MAR 2024