

BUCHANAN TWO DEPARTURE

AL-5320 (FAA)

BUCHANAN FLD (CCR)
CONCORD, CALIFORNIA

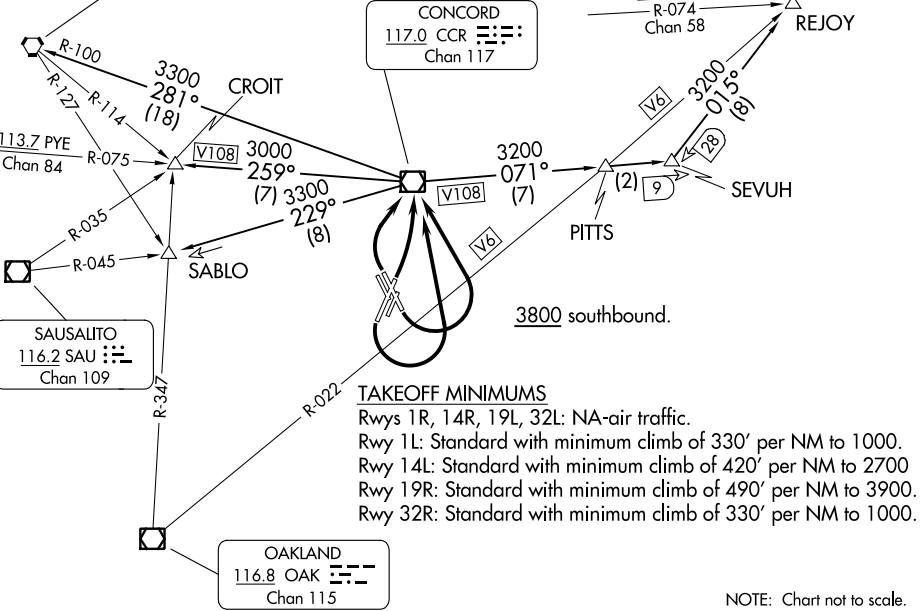
**TOP ALTITUDE:
ASSIGNED BY ATC**

GND CON
121.9
CONCORD TOWER *
119.7 (CTAF) 257.8
TRAVIS DEP CON
119.9 322.325

SCAGGS ISLAND
112.1 SGD
Chan 58

CONCORD
117.0 CCR
Chan 117

SACRAMENTO
115.2 SAC
Chan 99



SW-2, 22 FEB 2024 to 21 MAR 2024

SW-2, 22 FEB 2024 to 21 MAR 2024

DEPARTURE ROUTE DESCRIPTION

TAKEOFF RUNWAYS 1L, 14L, 19R: Climbing left turn direct CCR VOR/DME, thence. . . .

TAKEOFF RUNWAY 32R: Climbing right turn direct CCR VOR/DME, thence. . . .

. . . .on (transition) or (assigned route).

CROIT TRANSITION (BCHN2.CROIT): From over CCR VOR/DME on CCR R-259 to CROIT INT.

PITTS TRANSITION (BCHN2.PITTS): From over CCR VOR/DME on CCR R-071 to PITTS INT.

REJOY TRANSITION (BCHN2.REJOY): From over CCR VOR/DME on CCR R-071 and SAC R-195 to REJOY INT.

SABLO TRANSITION (BCHN2.SABLO): From over CCR VOR/DME on CCR R-229 to SABLO INT.

SCAGGS ISLAND TRANSITION (BCHN2.SGD): From over CCR VOR/DME on CCR R-281 and SGD R-100 to SGD VORTAC.

BUCHANAN TWO DEPARTURE