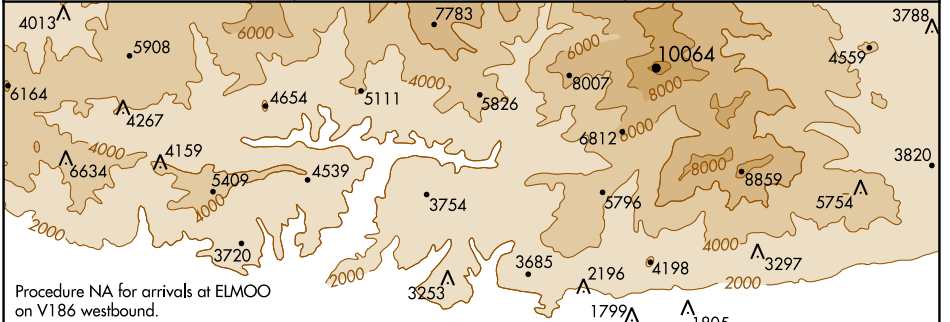


WAAS CH <b>45934</b> <b>W06A</b>	APP CRS <b>054°</b>	Rwy Idg TDZE Apt Elev	<b>3757</b> <b>1430</b> <b>1444</b>
--	------------------------	-----------------------------	---

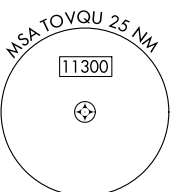
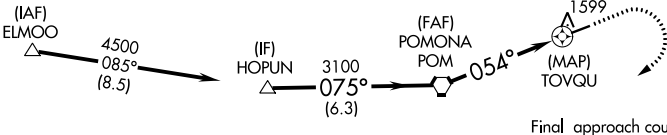
# RNAV (GPS) RWY 6

CABLE (CCB)

RNP APCH.		MISSED APPROACH: Climb to 1900 then climbing right turn to 5500 direct ADAMM and hold, continue climb-in-hold to 5500.
AWOS-3P <b>119.525</b>	SOCAL APP CON <b>125.5 349.0</b>	UNICOM <b>123.0</b> (CTAF) <b>1</b>

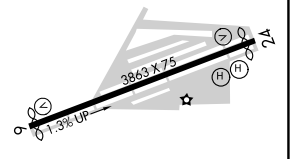
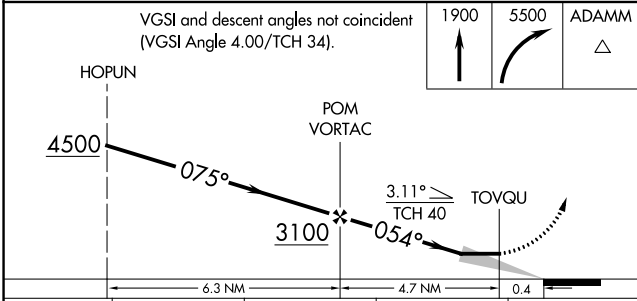


Procedure NA for arrivals at ELMOO on V186 westbound.



Final approach course offset 1.02°

ELEV 1444	TDZE 1430
-----------	-----------



CATEGORY	A	B	C	D
LP MDA	1780-1	350 (400-1)	1780-1½ 350 (400-1½)	NA
LNAV MDA	1940-1	510 (500-1)	1940-1½ 510 (500-1½)	NA
CIRCLING	2020-1	576 (600-1)	2140-2 696 (700-2)	NA

MIRL Rwy 6-24 **1**

SW-3, 05 NOV 2020 to 03 DEC 2020

SW-3, 05 NOV 2020 to 03 DEC 2020

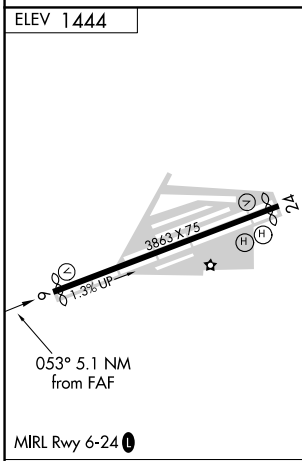
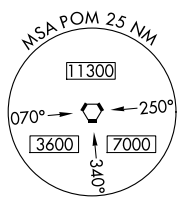
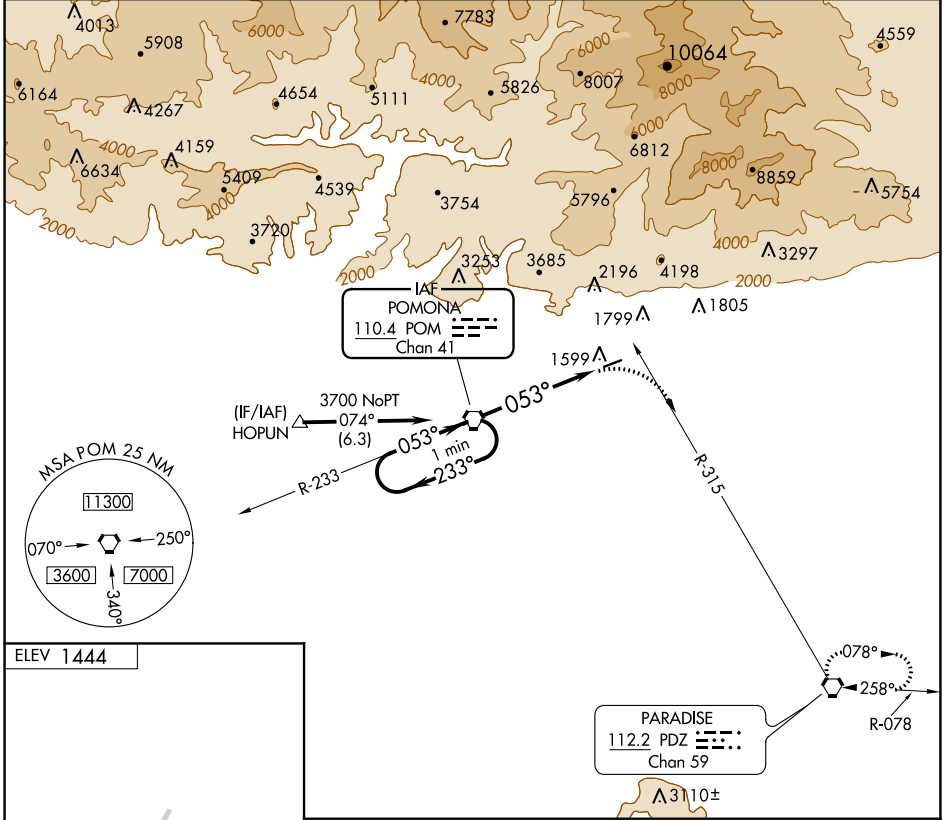
VORTAC POM <b>110.4</b> Chan 41	APP CRS <b>053°</b>	Rwy Idg TDZE Apt Elev <b>N/A</b> <b>N/A</b> <b>1444</b>
---------------------------------------	------------------------	--

**VOR-A**  
CABLE (CCB)

**NA** Circling NA northwest of Rwy 6-24. Procedure NA at night. When local altimeter setting not received, use Ontario altimeter setting and increase all MDA 100 feet and all visibilities ½ SM. Rwy 24 helicopter visibility reduction below 1 SM NA.

**MISSED APPROACH:** Climbing right turn to 4000 via heading 105° and PDZ R-315 to PDZ VORTAC and hold.

AWOS-3P <b>119.525</b>	SOCAL APP CON <b>125.5 349.0</b>	UNICOM <b>123.0 (CTAF) 0</b>
---------------------------	-------------------------------------	---------------------------------



One Minute Holding Pattern	VGSIs and descent angles not coincident (VGSi Angle 4.00/ TCH 34).		4000	PDZ R-315	PDZ
	POM VORTAC		hdg 105°		
3700 ← 233°		→ 053°	POM (5.1)		
		4.22° TCH 40	5.1 NM		
CATEGORY	A	B	C	D	
<input checked="" type="checkbox"/> CIRCLING	2240-1	796 (800-1)	2240-2¼ 796 (800-2¼)	NA	

FAF to MAP 5.1 NM					
Knots	60	90	120	150	180
Min:Sec	5:06	3:24	2:33	2:02	1:42

SW-3, 05 NOV 2020 to 03 DEC 2020

SW-3, 05 NOV 2020 to 03 DEC 2020