

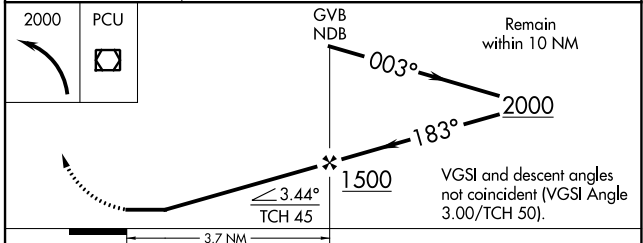
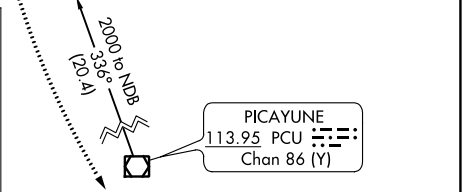
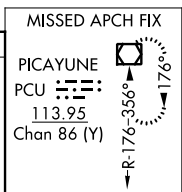
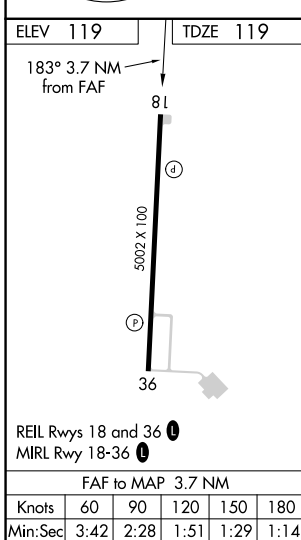
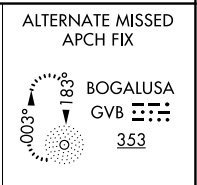
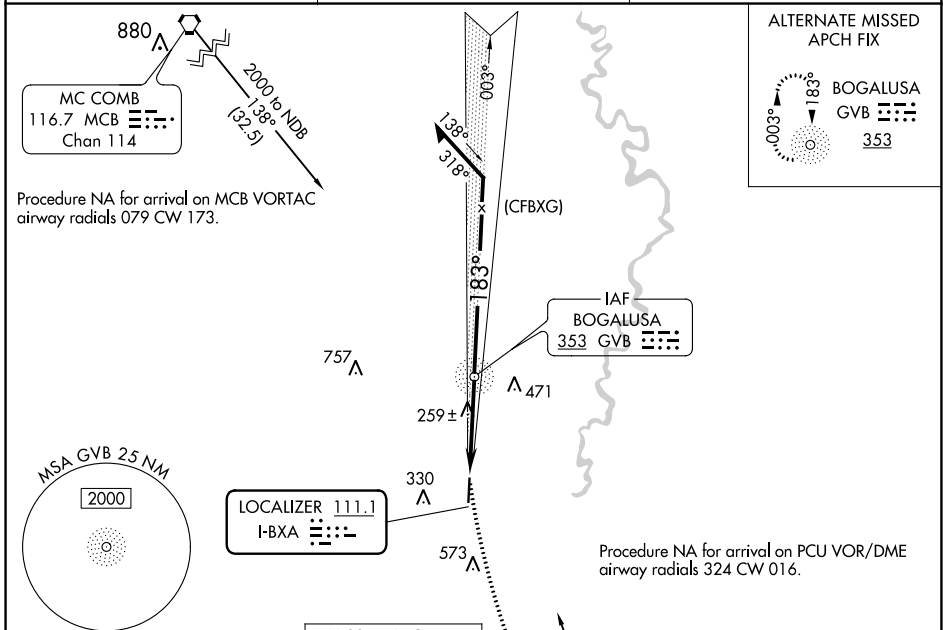
LOC I-BXA 111.1	APP CRS 183°	Rwy ldg TDZE Apt Elev	5002 119 119
---------------------------	------------------------	-----------------------------	---

LOC RWY 18

GEORGE R CARR MEML AIR FLD (BXA)

ADF required ▼ ▲	MISSED APPROACH: Climbing left turn to 2000 direct PCU VOR/DME and hold.
------------------------	--

AWOS-3PT 118.025	HOUSTON CENTER 126.8 327.8	UNICOM 122.8 (CTAF) 0
----------------------------	--------------------------------------	---------------------------------



CATEGORY	A	B	C	D
S-18	520-1	401 (500-1)	520-1 ¹ / ₈ 401 (500-1 ¹ / ₈)	NA
CIRCLING	620-1 501 (600-1)	720-1 601 (700-1)	880-2 ¹ / ₄ 761 (800-2 ¹ / ₄)	NA

LOC RWY 18

SC-4, 22 FEB 2024 to 21 MAR 2024

SC-4, 22 FEB 2024 to 21 MAR 2024

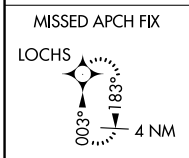
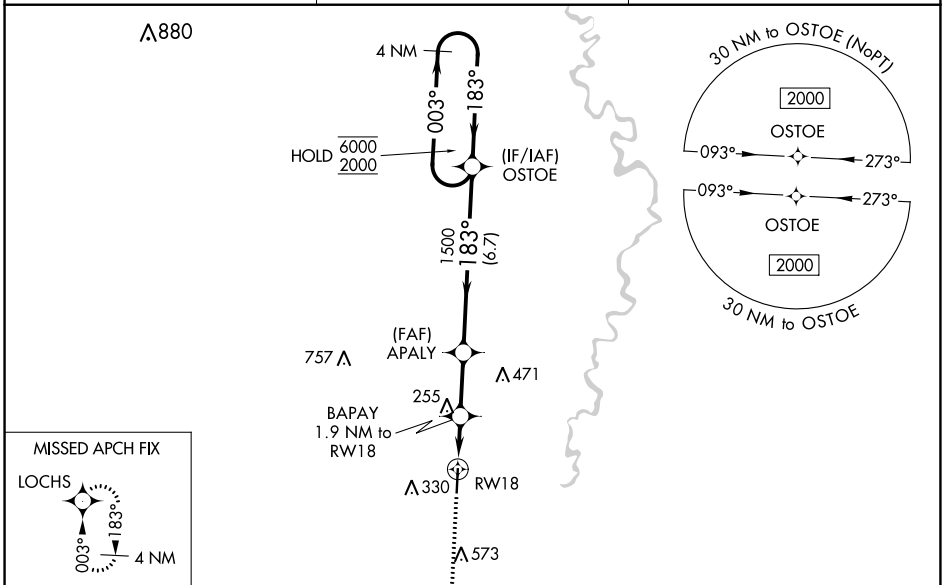
WAAS CH 72613 W18A	APP CRS 183°	Rwy Idg 5002 TDZE 119 Apt Elev 119
--	------------------------	---

RNAV (GPS) RWY 18

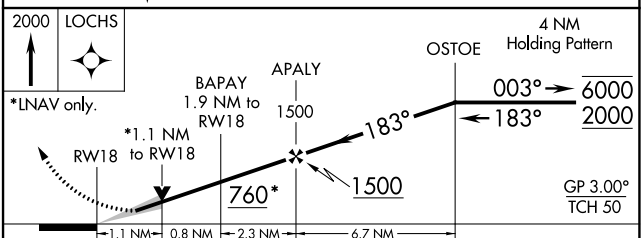
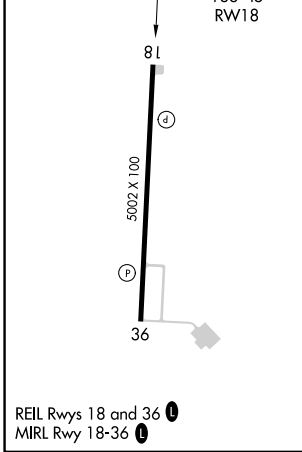
GEORGE R CARR MEML AIR FLD (B.X.A)

RNP APCH.	MISSED APPROACH: Climb to 2000 direct LOCHS and hold.
For uncompensated Baro-VNAV systems, procedure NA below -15°C or above 54°C.	

AWOS-3PT 118.025	HOUSTON CENTER 126.8 327.8	UNICOM 122.8 (CTAF) 0
----------------------------	--------------------------------------	---------------------------------



ELEV 119	TDZE 119
----------	----------



CATEGORY	A	B	C	D
LPV DA	387-1		268 (300-1)	NA
LNAV/VNAV DA	554-1 ³ / ₈		435 (500-1 ³ / ₈)	NA
LNAV MDA	520-1	401 (500-1)	520-1 ¹ / ₈ 401 (500-1 ¹ / ₈)	NA
CIRCLING	620-1 501 (600-1)	720-1 601 (700-1)	880-2 ¹ / ₄ 761 (800-2 ¹ / ₄)	NA

SC-4, 22 FEB 2024 to 21 MAR 2024

SC-4, 22 FEB 2024 to 21 MAR 2024

WAAS CH 62913 W36A	APP CRS 003°	Rwy Idg 5002 TDZE 117 Apt Elev 119
--	------------------------	---

RNAV (GPS) RWY 36

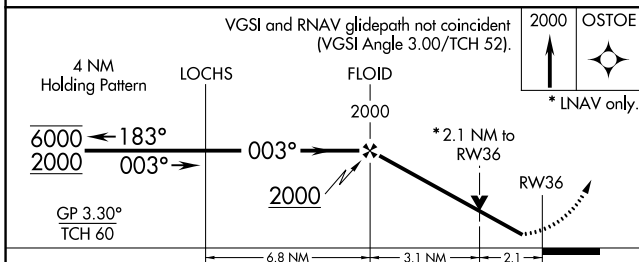
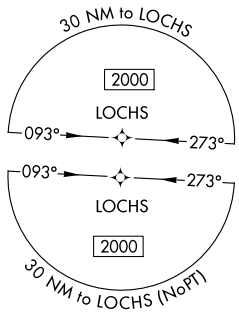
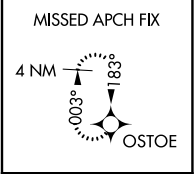
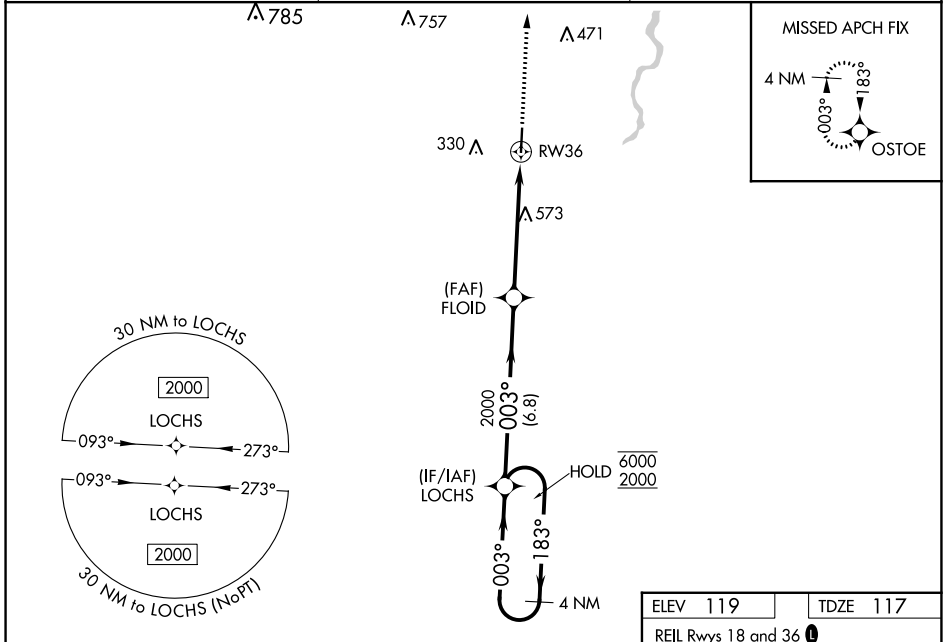
GEORGE R CARR MEML AIR FLD (BXA)

RNP APCH.

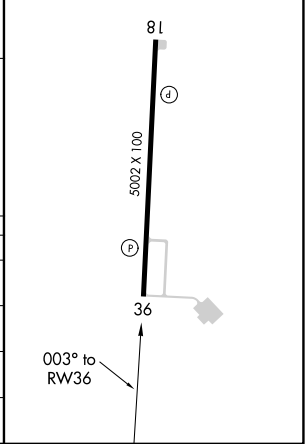
▼
▲ Rwy 36 helicopter visibility reduction below 3/4 SM NA.
For uncompensated Baro-VNAV systems, LNAV/VNAV NA below -15°C or above 54°C.

MISSED APPROACH: Climb to 2000 direct OSTOE and hold.

AWOS-3PT 118.025	HOUSTON CENTER 126.8 327.8	UNICOM 122.8 (CTAF) 0
----------------------------	--------------------------------------	---------------------------------



ELEV 119	TDZE 117
REIL Rwy 18 and 36 0	MIRL Rwy 18-36 0



CATEGORY	A	B	C	D
LPV DA	421-1	304 (400-1)		NA
LNAV/VNAV DA	512-1 1/8	395 (400-1 1/8)		NA
LNAV MDA	840-1 723 (800-1)		840-2 723 (800-2)	NA
CIRCLING	840-1 721 (800-1)		880-2 1/4 761 (800-2 1/4)	NA

SC-4, 22 FEB 2024 to 21 MAR 2024

SC-4, 22 FEB 2024 to 21 MAR 2024