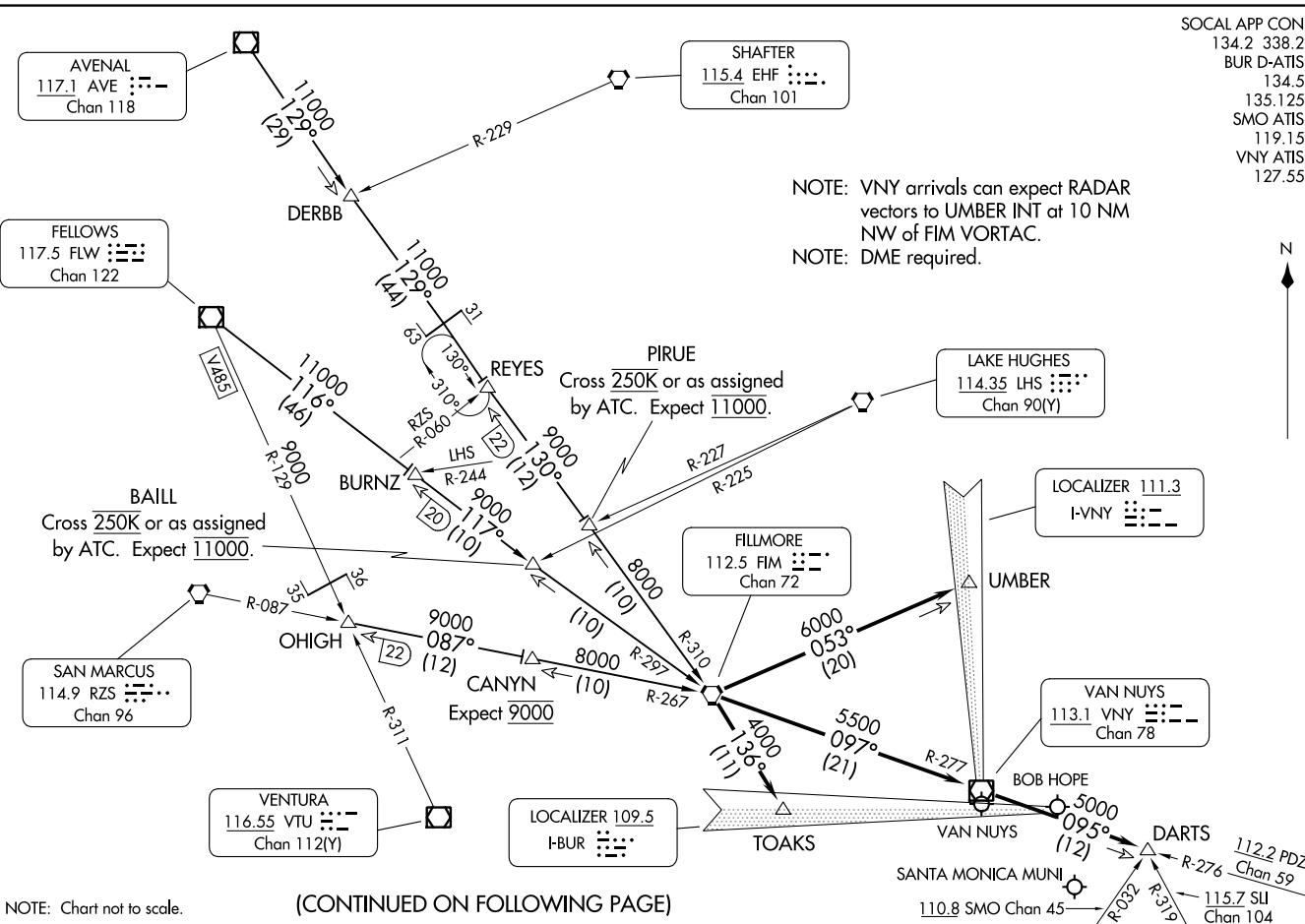


(FIM.FERN7) 10NOV16

FERNANDO SEVEN ARRIVAL

BURBANK, CALIFORNIA



NOTE: Chart not to scale.

(CONTINUED ON FOLLOWING PAGE)

- SOCAL APP CON
 134.2 338.2
 BUR D-ATIS
 134.5
 135.125
 SMO ATIS
 119.15
 VNY ATIS
 127.55

(FIM.FERN7) 23334

AI-67 (FAA)

BURBANK, CALIFORNIA

ARRIVAL ROUTE DESCRIPTION

AVENAL TRANSITION (AVE.FERN7): From over AVE VOR/DME on AVE R-129 and FIM R-310 to FIM VORTAC. Thence. . . .

DERBB TRANSITION (DERBB.FERN7): From over DERBB INT on AVE R-129 and FIM R-310 to FIM VORTAC. Thence. . . .

FELLOWS TRANSITION (FLW.FERN7): From over FLW VOR/DME on FLW R-116 and FIM R-297 to FIM VORTAC. Thence. . . .

OHIGH TRANSITION (OHIGH.FERN7): From over OHIGH INT on FIM R-267 to FIM VORTAC. Thence. . . .

. . . .From over FIM VORTAC:

LANDING VAN NUYS RWY 16: Via FIM R-053 to UMBER INT, then via I-VNY localizer. Expect ILS RWY 16R.

LANDING VAN NUYS RWY 34: Via FIM R-136 to TOAKS INT, then via I-BUR localizer. Expect LDA-C; circle to land Rwy 34L.

LANDING BOB HOPE: Via FIM R-136 to TOAKS INT, then via I-BUR localizer. Expect ILS RWY 8.

LANDING SANTA MONICA MUNI: Via FIM R-097 and VNY R-277 to VNY then via VNY R-095 to DARTS INT. Expect VOR-A approach.

SW-3, 22 FEB 2024 to 21 MAR 2024

SW-3, 22 FEB 2024 to 21 MAR 2024

JANNY FIVE ARRIVAL (RNAV)
(JANNY.JANNY5) 19JUL18

SOCAL APP CON
120.4 360.6
BUR D-ATIS
134.5
VNY ATIS
127.55
BURBANK TOWER
118.7 254.3
VAN NUYS TOWER*
119.3 239.0



- NOTE: RADAR required.
- NOTE: RNAV 1.
- NOTE: DME/DME/IRU or GPS required.
- NOTE: WNCHL transition ATC assigned only.
- NOTE: KREME transition restricted to KLAS departures only.
- NOTE: Landing BUR expect Rwy 8 unless otherwise assigned by ATC.
- NOTE: Landing VNY expect Rwy 16R unless otherwise assigned by ATC.

KVNY Ldg Rwy 16R

PUCCK 8000

EIFEL 7000

UMBER 6000

WABBT 6000

JANNY 8000

ELMRR 7000

KBUR Ldg Rwy 8

PALMDALE PMD 13000

KOPLK 14000

COWWS

SNTRA FL190

CHKNZ

DYVER FL190

BASAL

JOHNN FL220

DNUTT FL230

JOEES FL240

BUGGA

COOOP

NEEDLES EED

GLAZD

WNCHL

NIIPIY

KREME FL240

TAAAP

WELUM

PURSE

BURBANK, CALIFORNIA

NOTE: Chart not to scale.

ARRIVAL ROUTE DESCRIPTION

- BUGGA TRANSITION (BUGGA.JANNY5)
- NEEDLES TRANSITION (EED.JANNY5)
- KREME TRANSITION (KREME.JANNY5)
- PURSE TRANSITION (PURSE.JANNY5)
- WELUM TRANSITION (WELUM.JANNY5)
- WNCHL TRANSITION (WNCHL.JANNY5)

LANDING KBUR RWY 8: From JANNY on track 243° to cross PUCCK at 8000, then on track 201° to cross ELMRR at or above 7000, then on track 201° to cross WABBT at 6000, then on track 201°. Expect RNAV (RNP) Y RWY 8 or RADAR vectors to final approach course.

LANDING KVNY: From JANNY on track 243° to cross PUCCK at 8000, then on track 243° to cross EIFEL at or above 7000, then on track 189° to cross UMBER at or above 6000. Expect ILS Y RWY 16R or ILS Z RWY 16R.

JANNY FIVE ARRIVAL (RNAV)
(JANNY.JANNY5) 20198

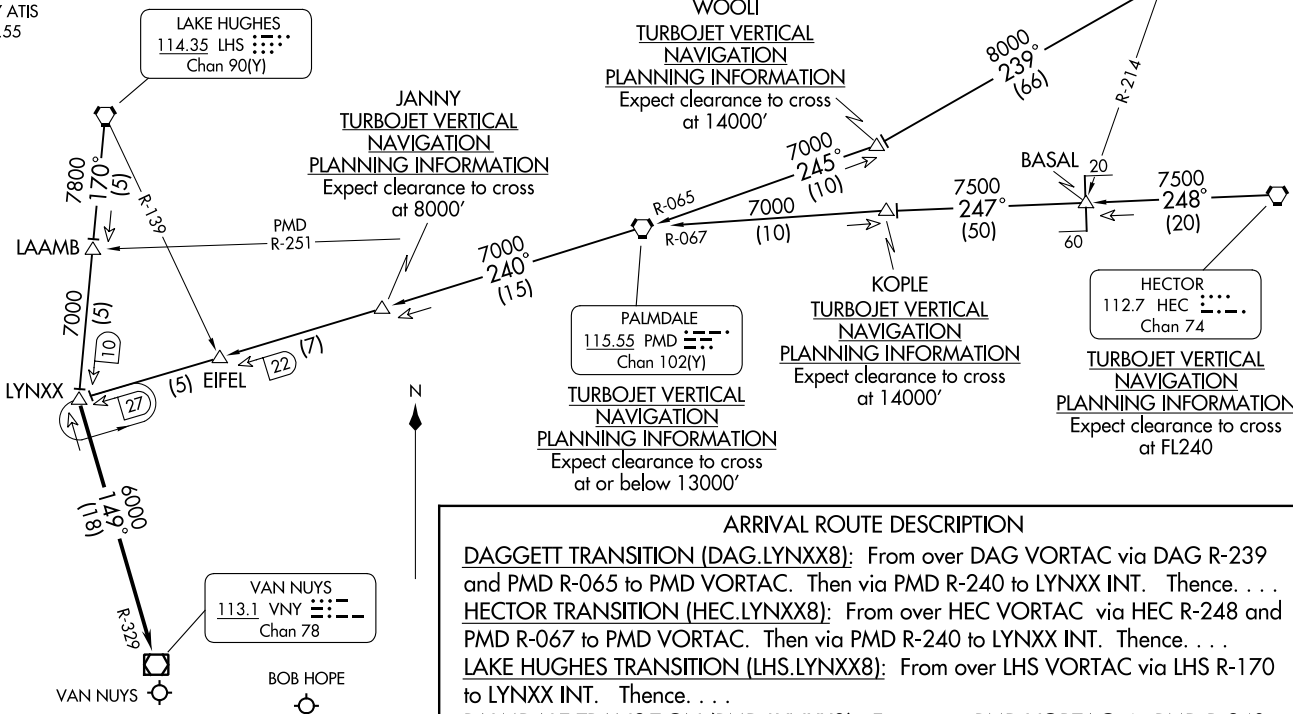
AL-67 (FAA)

BURBANK, CALIFORNIA

LYNXX.LYNXX8) 03AUG06

LYNXX EIGHT ARRIVAL

SOCAL APP CON
120.4 360.6
BUR D-ATIS
134.5
135.125
VNY ATIS
127.55



NOTE: DME required for DAGGETT, HECTOR, and PALMDALE Transitions.
NOTE: Chart not to scale.

ARRIVAL ROUTE DESCRIPTION

DAGGETT TRANSITION (DAG.LYNXX8): From over DAG VORTAC via DAG R-239 and PMD R-065 to PMD VORTAC. Then via PMD R-240 to LYNXX INT. Thence. . .

HECTOR TRANSITION (HEC.LYNXX8): From over HEC VORTAC via HEC R-248 and PMD R-067 to PMD VORTAC. Then via PMD R-240 to LYNXX INT. Thence. . .

LAKE HUGHES TRANSITION (LHS.LYNXX8): From over LHS VORTAC via LHS R-170 to LYNXX INT. Thence. . .

PALMDALE TRANSITION (PMD.LYNXX8): From over PMD VORTAC via PMD R-240 to LYNXX INT. Thence. . .

. . . From over LYNXX INT via VNY R-329 to VNY VOR/DME. Expect RADAR vectors to final approach course after VNY VOR/DME.

LYNXX.LYNXX8) 23334

AL-67 (FAA)

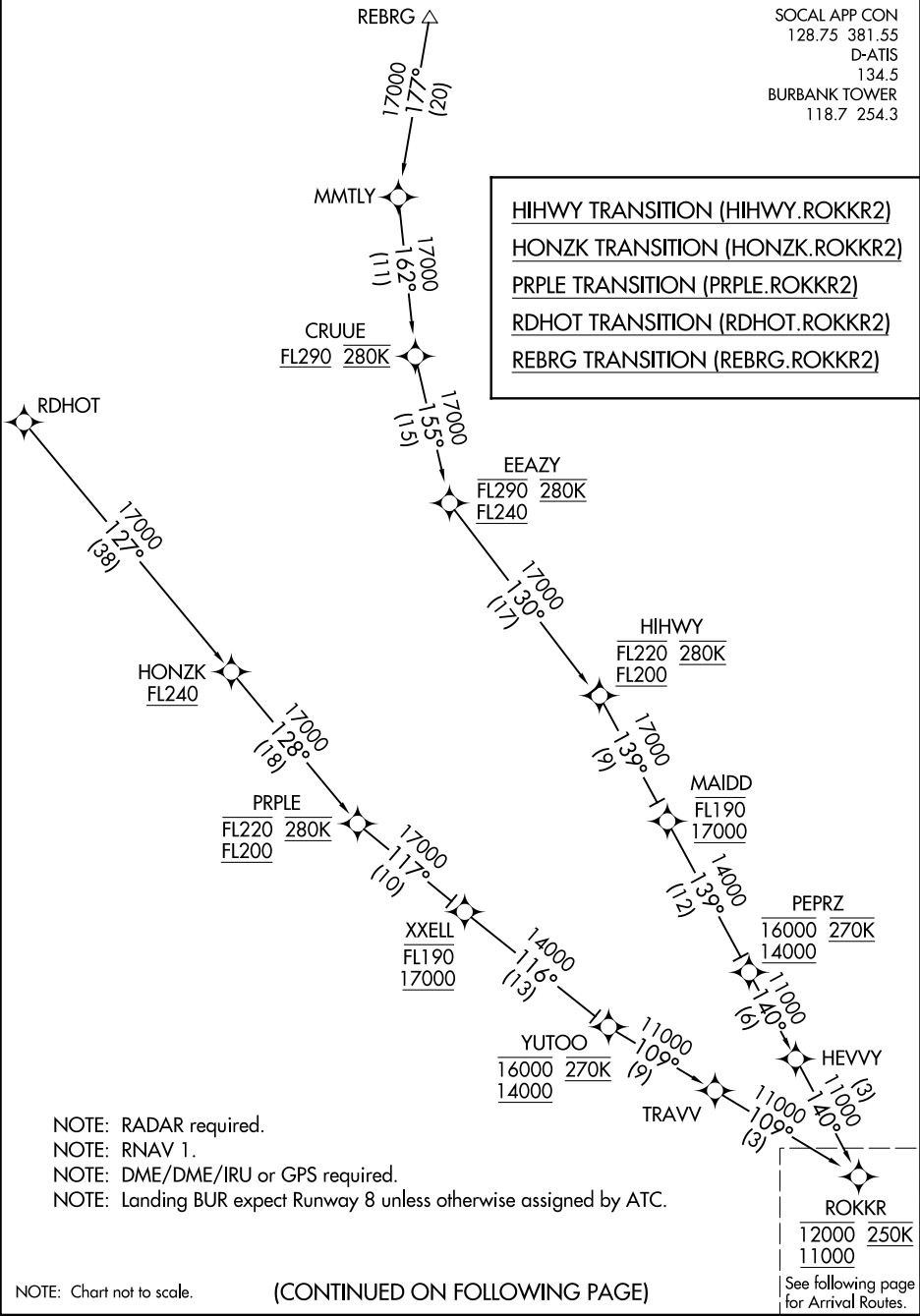
BURBANK, CALIFORNIA

SOCAL APP CON
128.75 381.55
D-ATIS
134.5
BURBANK TOWER
118.7 254.3

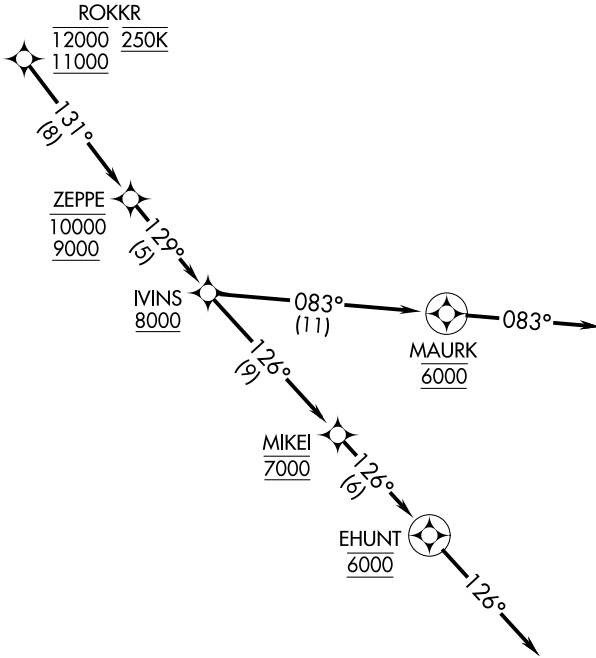
- HIHWY TRANSITION (HIHWY.ROKKR2)
- HONZK TRANSITION (HONZK.ROKKR2)
- PRPLE TRANSITION (PRPLE.ROKKR2)
- RDHOT TRANSITION (RDHOT.ROKKR2)
- REBRG TRANSITION (REBRG.ROKKR2)

SW-3, 22 FEB 2024 to 21 MAR 2024

SW-3, 22 FEB 2024 to 21 MAR 2024



SOCAL APP CON
128.75 381.55
D-ATIS
134.5
BURBANK TOWER
118.7 254.3



- NOTE: RADAR required.
- NOTE: RNAV 1.
- NOTE: DME/DME/IRU or GPS required.
- NOTE: Landing BUR expect Runway 8 unless otherwise assigned by ATC.

NOTE: Chart not to scale.

ARRIVAL ROUTE DESCRIPTION

From ROKKR on track 131° to cross ZEPPE between 9000 and 10000, then on track 129° to cross IVINS at or above 8000.

KBUR RUNWAY 8: From IVINS on track 126° to cross MIKEI at 7000. Expect ILS or LOC RWY 8 approach.

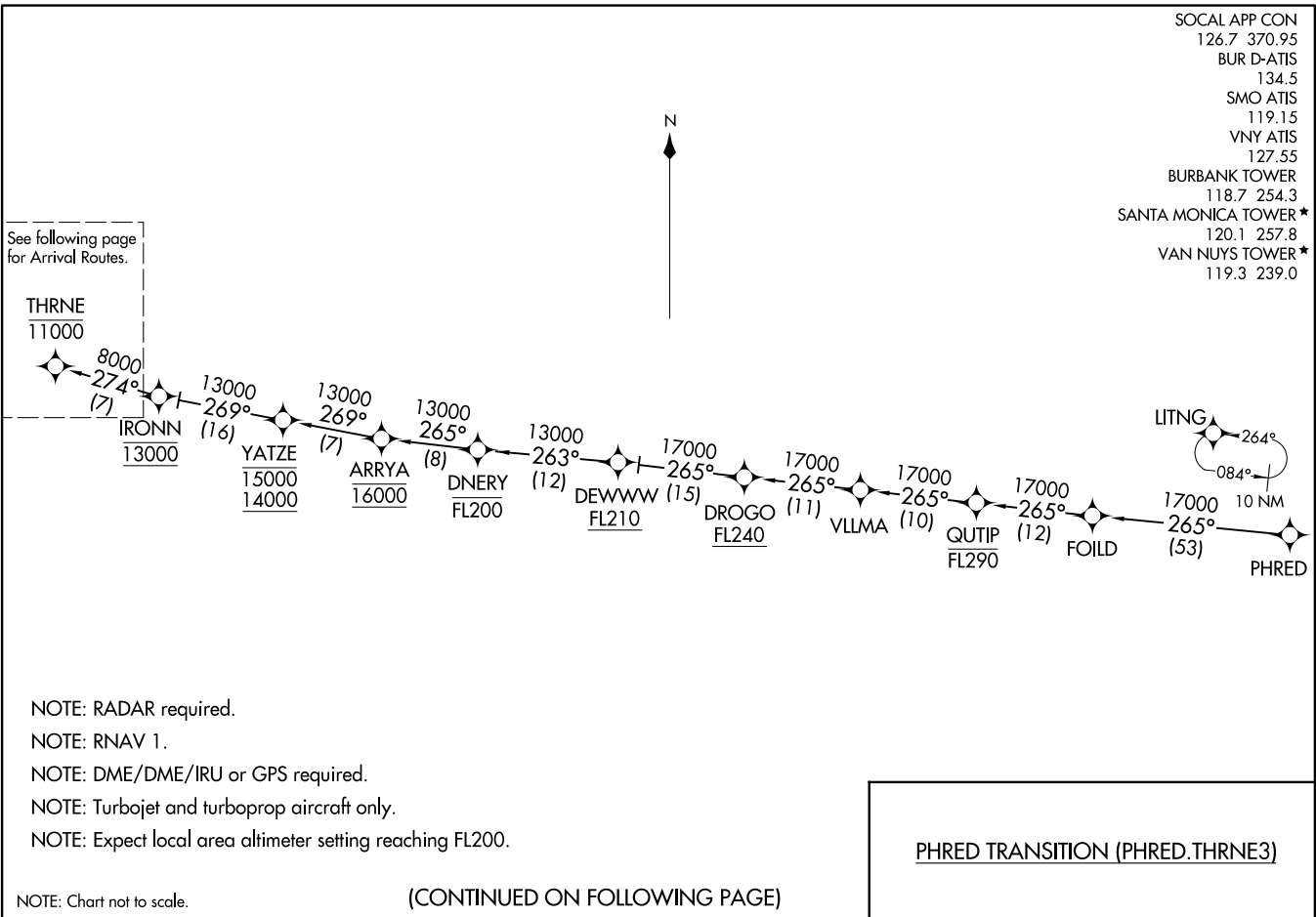
KBUR RUNWAY 15: From IVINS on track 083° to cross MAURK at 6000, then on track 083°. Expect RADAR vectors to final approach course.

KBUR RUNWAY 33: From IVINS on track 126° to cross MIKEI at 7000, then on track 126° to cross EHUNT at 6000, then on track 126°. Expect RADAR vectors to final approach course.

(THRNE:THRNE3) 29MAR18

THRNE THREE ARRIVAL (RNAV) Transition Route

BURBANK, CALIFORNIA



See following page for Arrival Routes.

- NOTE: RADAR required.
- NOTE: RNAV 1.
- NOTE: DME/DME/IRU or GPS required.
- NOTE: Turbojet and turboprop aircraft only.
- NOTE: Expect local area altimeter setting reaching FL200.

NOTE: Chart not to scale.

(CONTINUED ON FOLLOWING PAGE)

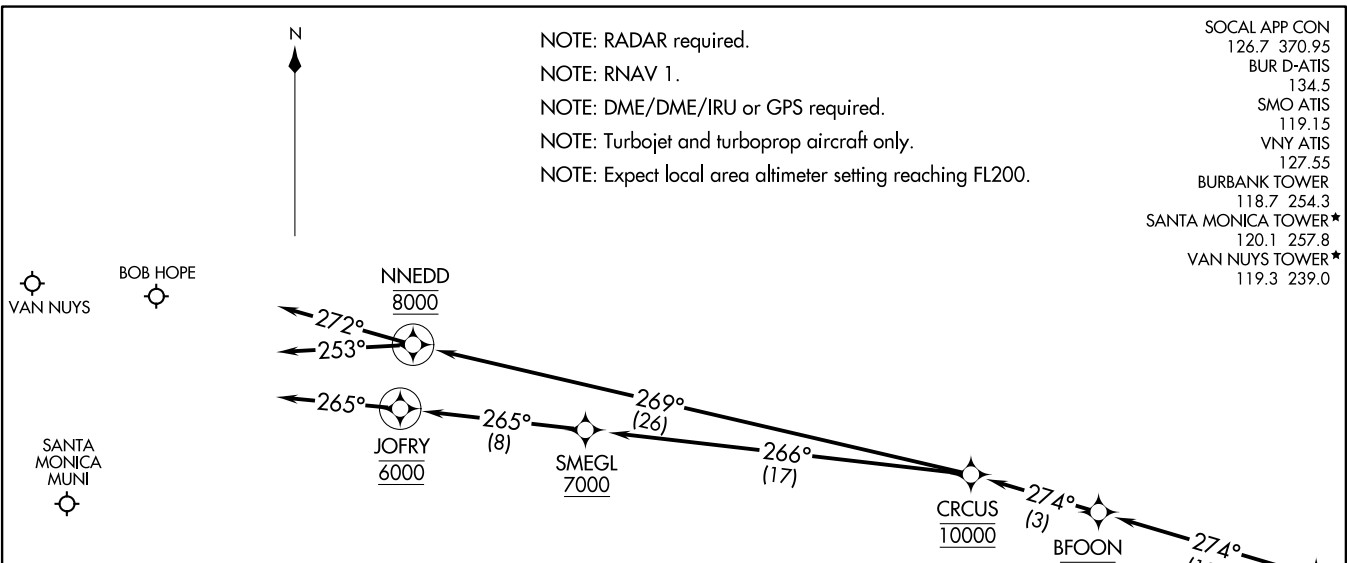
PHRED TRANSITION (PHRED.THRNE3)

- SOCAL APP CON 126.7 370.95
- BUR D-ATIS 134.5
- SMO ATIS 119.15
- VNY ATIS 127.55
- BURBANK TOWER 118.7 254.3
- SANTA MONICA TOWER* 120.1 257.8
- VAN NUYS TOWER* 119.3 239.0

(THRNE:THRNE3) 21168
THRNE THREE ARRIVAL (RNAV) Transition Route
Alt-67 (FAA) BURBANK, CALIFORNIA

THRNE THREE ARRIVAL (RNAV) Arrival Routes
(THRNE:THRNE3) 29MAR18

BURBANK, CALIFORNIA



ARRIVAL ROUTE DESCRIPTION

LANDING KBUR: From THRNE on track 274° to cross BFOON at 10000, then on track 274° to cross CRCUS at 10000, then on track 269° to cross NNEDD at 8000, then on track 253°. Expect RADAR vectors to final approach course.

LANDING KSMO: From THRNE on track 274° to cross BFOON at 10000, then on track 274° to cross CRCUS at 10000, then on track 266° to cross SMEGL at or above 7000, then on track 265° to cross JOFRY at 6000, then on track 265°. Expect RADAR vectors to final approach course.

LANDING KVNY: From THRNE on track 274° to cross BFOON at 10000, then on track 274° to cross CRCUS at 10000, then on track 269° to cross NNEDD at 8000, then on track 272°. Expect RADAR vectors to final approach course.

NOTE: Chart not to scale.

(THRNE:THRNE3) 21168
THRNE THREE ARRIVAL (RNAV) Arrival Routes
A1-67 (FAA) BURBANK, CALIFORNIA

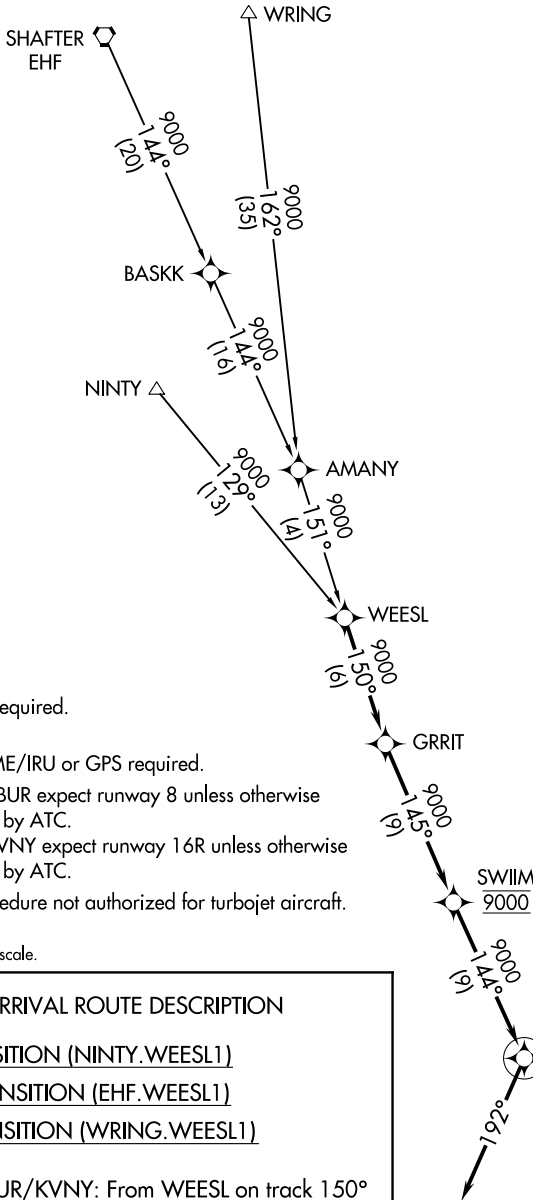
(WEESL.WEESL1) 21168

WEESL ONE ARRIVAL (RNAV)

AL-67 (FAA)

BURBANK, CALIFORNIA

SOCAL APP CON
 120.4 360.6
 BUR D-ATIS
 134.5
 VNY ATIS
 127.55
 BURBANK TOWER
 118.7 254.3
 VAN NUYS TOWER*
 119.3 239.0



- NOTE: RADAR required.
- NOTE: RNAV 1.
- NOTE: DME/DME/IRU or GPS required.
- NOTE: Landing BUR expect runway 8 unless otherwise assigned by ATC.
- NOTE: Landing VNY expect runway 16R unless otherwise assigned by ATC.
- NOTE: This procedure not authorized for turbojet aircraft.

NOTE: Chart not to scale.

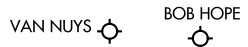
ARRIVAL ROUTE DESCRIPTION

NINTY TRANSITION (NINTY.WEESL1)

SHAFTER TRANSITION (EHF.WEESL1)

WRING TRANSITION (WRING.WEESL1)

LANDING KBUR/KVNY: From WEESL on track 150° to GRRIT, then on track 145° to cross SWIIM at 9000, then on track 144° to cross LYNXX at 9000, then on track 192°. Expect RADAR vectors to final approach course.



WEESL ONE ARRIVAL (RNAV)

(WEESL.WEESL1) 10NOV15

BURBANK, CALIFORNIA

SW-3, 22 FEB 2024 to 21 MAR 2024

SW-3, 22 FEB 2024 to 21 MAR 2024