

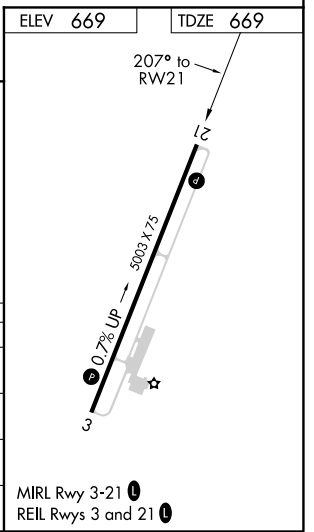
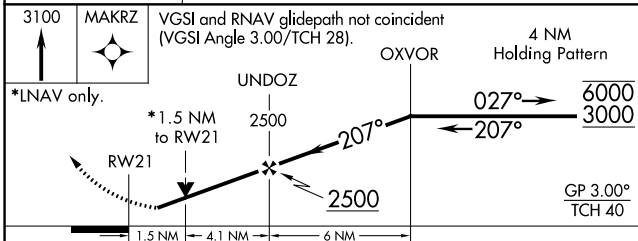
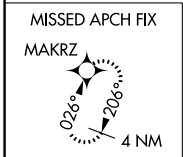
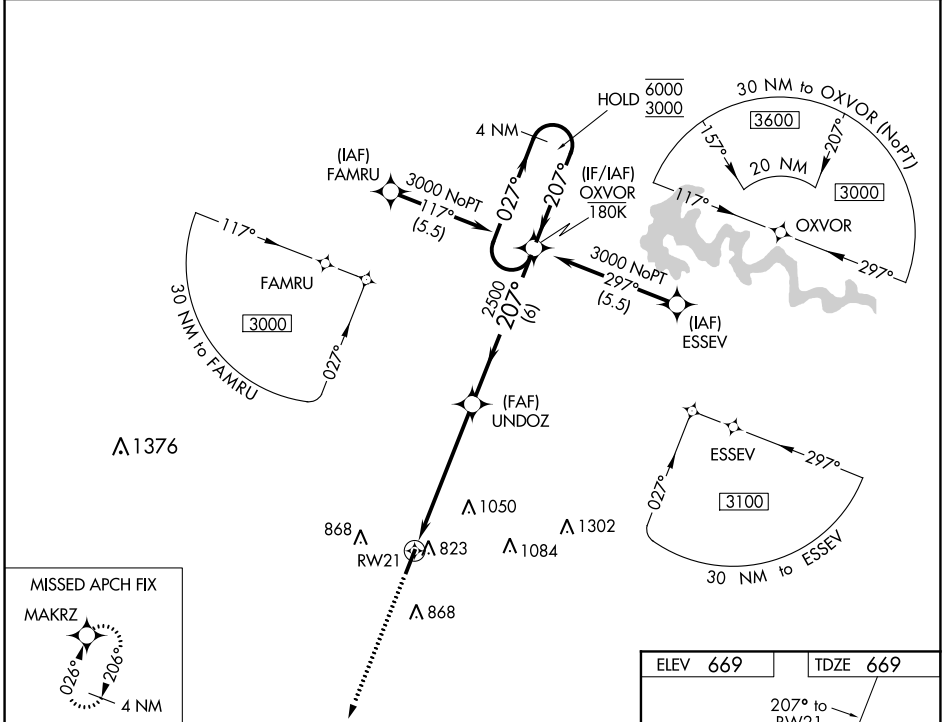
WAAS CH <b>77816</b> <b>W21A</b>	APP CRS <b>207°</b>	Rwy Idg TDZE Apt Elev	<b>5003</b> <b>669</b> <b>669</b>
--	------------------------	-----------------------------	---

# RNAV (GPS) RWY 21

SAMUELS FLD (BRY)

RNP APCH.	MISSED APPROACH: Climb to 3100 direct MAKRZ and hold.
<p><b>▼</b> Rwy 21 helicopter visibility reduction below 3/4 SM NA.  <b>▲</b> For uncompensated Baro-VNAV systems, LNAV/VNAV NA below -16°C or above 54°C.</p>	

AWOS-3 <b>119.925</b>	LOUISVILLE APP CON <b>132.075 327.0</b>	UNICOM <b>122.8 (CTAF) 0</b>
--------------------------	--	---------------------------------



CATEGORY	A	B	C	D
LPV DA	919-3/4		250 (300-3/4)	
LNAV/VNAV DA	1051-1 1/8		382 (400-1 1/8)	
LNAV MDA	1180-1 511 (600-1)		1180-1 3/8 511 (600-1 1/8)	
<b>C</b> CIRCLING	1200-1 531 (600-1)	1260-1 591 (600-1)	1360-2 691 (700-2)	1480-2 3/4 811 (900-2 3/4)

SE-1, 11 AUG 2022 to 08 SEP 2022

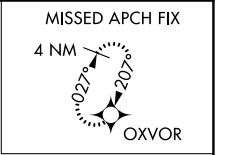
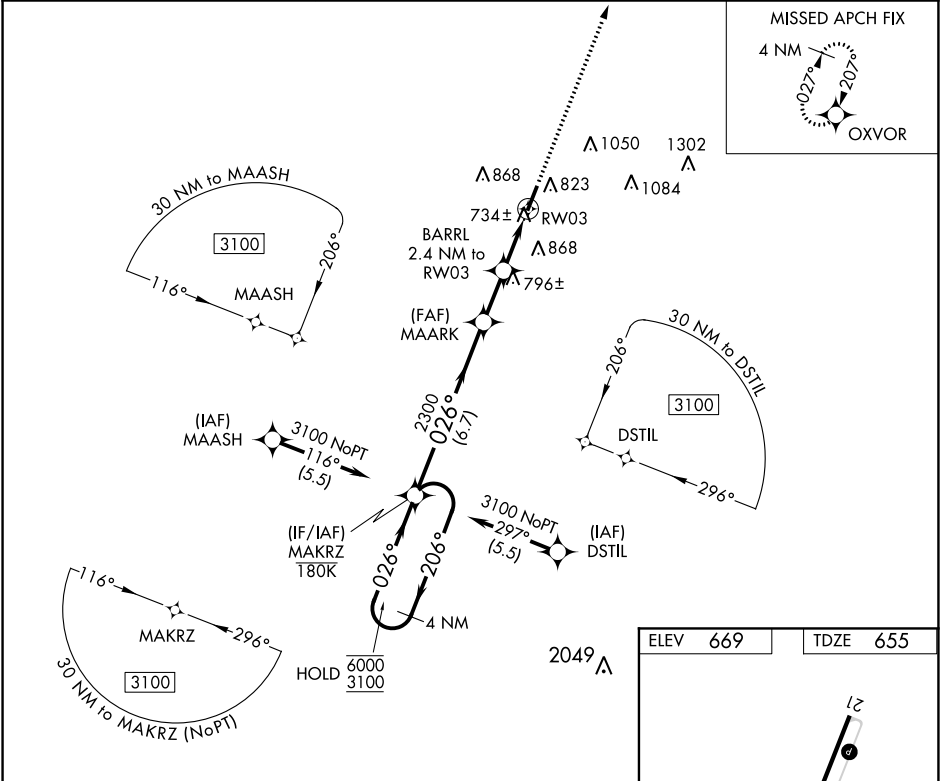
SE-1, 11 AUG 2022 to 08 SEP 2022

APP CRS	Rwy Idg	<b>5003</b>
<b>026°</b>	TDZE	<b>655</b>
	Apt Elev	<b>669</b>

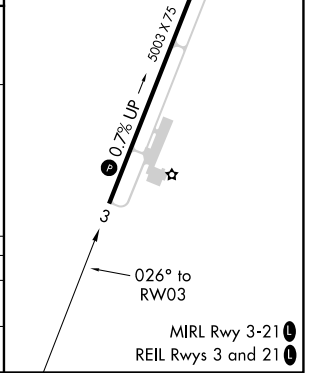
# RNAV (GPS) RWY 3

SAMUELS FLD (BRY)

RNP APCH.		MISSED APPROACH: Climb to 3000 direct OXVOR and hold.
	Rwy 3 helicopter visibility reduction below 3/4 SM NA.	
AWOS-3 <b>119.925</b>	LOUISVILLE APP CON <b>132.075 327.0</b>	UNICOM <b>122.8 (CTAF) 0</b>



4 NM Holding Pattern	MAKRZ	MAARK	BARRL	3000	OXVOR
6000 ← 206°	3100 → 026°	2300	1560	↑	
	6.7 NM	2 NM	1.5 NM	0.9 NM	
CATEGORY	A	B	C	D	
LNVA MDA	1000-1 345 (400-1)				
CIRCLING	1200-1 531 (600-1)	1260-1 591 (600-1)	1360-2 691 (700-2)	1480-2 3/4 811 (900-2 3/4)	



SE-1, 11 AUG 2022 to 08 SEP 2022

SE-1, 11 AUG 2022 to 08 SEP 2022

VOR/DME EWO <b>110.8</b> Chan 45	APP CRS <b>037°</b>	Rwy Idg TDZE Apt Elev	<b>5003</b> <b>655</b> <b>669</b>
--	------------------------	-----------------------------	---

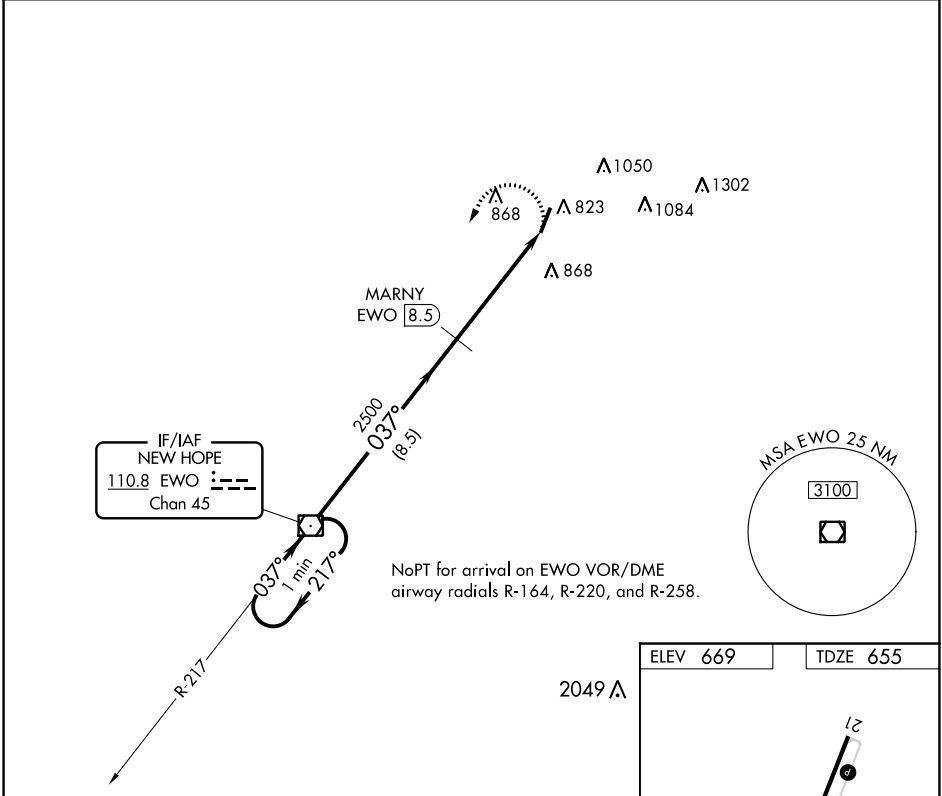
# VOR RWY 3

SAMUELS FLD (BRY)

Straight-in and Circling minimums NA at night.  
 Rwy 3 helicopter visibility reduction below 1 SM NA.  
 DME required.

MISSED APPROACH: Climbing left turn to 2500 direct EWO VOR/DME and hold.

AWOS-3 <b>119.925</b>	LOUISVILLE APP CON <b>132.075 327.0</b>	UNICOM <b>122.8 (CTAF) 0</b>
--------------------------	--	---------------------------------



One Minute Holding Pattern

2500 ← 217° / 037° → 2500

EWO VOR/DME

MARNY EWO 8.5

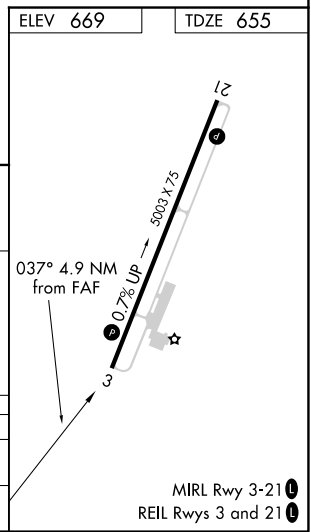
EWO 13.4

3.50° TCH 41

8.5 NM

4.9 NM

CATEGORY	A	B	C	D
S-3	1200-1	545 (600-1)	1200-1½	545 (600-1½)
CIRCLING	1200-1 531 (600-1)	1260-1 591 (600-1)	1360-2 691 (700-2)	1480-2¾ 811 (900-2¾)



SE-1, 11 AUG 2022 to 08 SEP 2022

SE-1, 11 AUG 2022 to 08 SEP 2022