

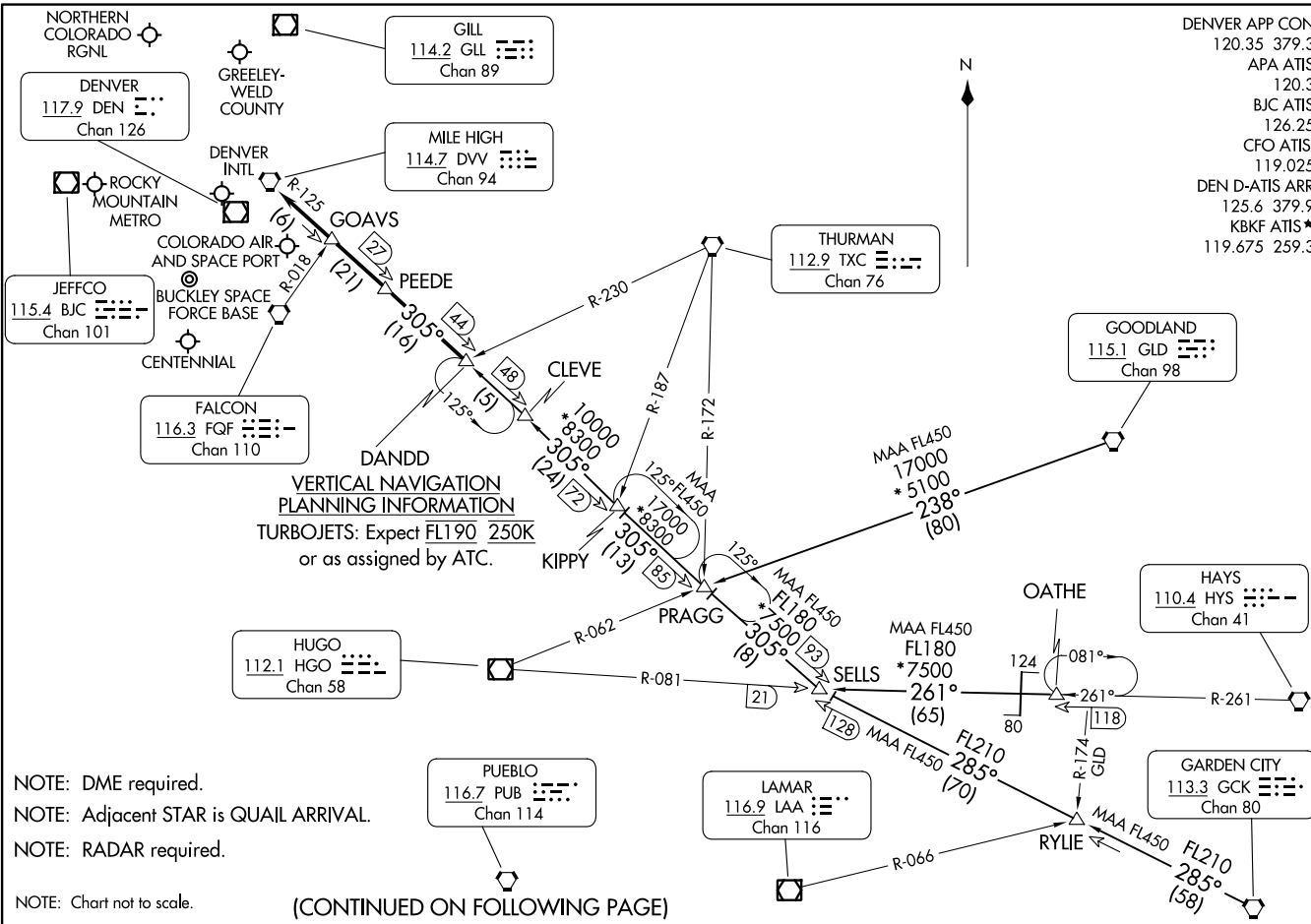
DANDD ONE ARRIVAL  
(DANDD.DANDD1) 30ANZ0

(DANDD.DANDD1) 23334  
DANDD ONE ARRIVAL

AL-9077 (FAA)

DENVER, COLORADO

DENVER APP CON 120.35 379.3  
 APA ATIS 120.3  
 BJC ATIS 126.25  
 CFO ATIS 119.025  
 DEN D-ATIS ARR 125.6 379.9  
 KBKF ATIS\* 119.675 259.3



**VERTICAL NAVIGATION  
 PLANNING INFORMATION**  
 TURBOJETS: Expect FL190 250K  
 or as assigned by ATC.

NOTE: DME required.  
 NOTE: Adjacent STAR is QUAIL ARRIVAL.  
 NOTE: RADAR required.  
 NOTE: Chart not to scale.

(CONTINUED ON FOLLOWING PAGE)

DENVER, COLORADO

ARRIVAL ROUTE DESCRIPTION

GARDEN CITY TRANSITION (GCK.DANDD1): From over GCK VORTAC on GCK R-285 and DVV R-125 to DANDD. Thence. . . .

GOODLAND TRANSITION (GLD.DANDD1): From over GLD VORTAC on GLD R-238 and DVV R-125 to DANDD. Thence. . . .

OATHE TRANSITION (OATHE.DANDD1): From over OATHE on HYS R-261 and HGO R-081 to SELLS, then on DVV R-125 to DANDD. Thence. . . .

. . . .from over DANDD on DVV R-125 to DVV VORTAC. Expect RADAR vectors to the final approach course at or before DVV VORTAC.

SW-1, 22 FEB 2024 to 21 MAR 2024

SW-1, 22 FEB 2024 to 21 MAR 2024

LANDR THREE ARRIVAL  
(LANDR.LANDR3) 20APR23

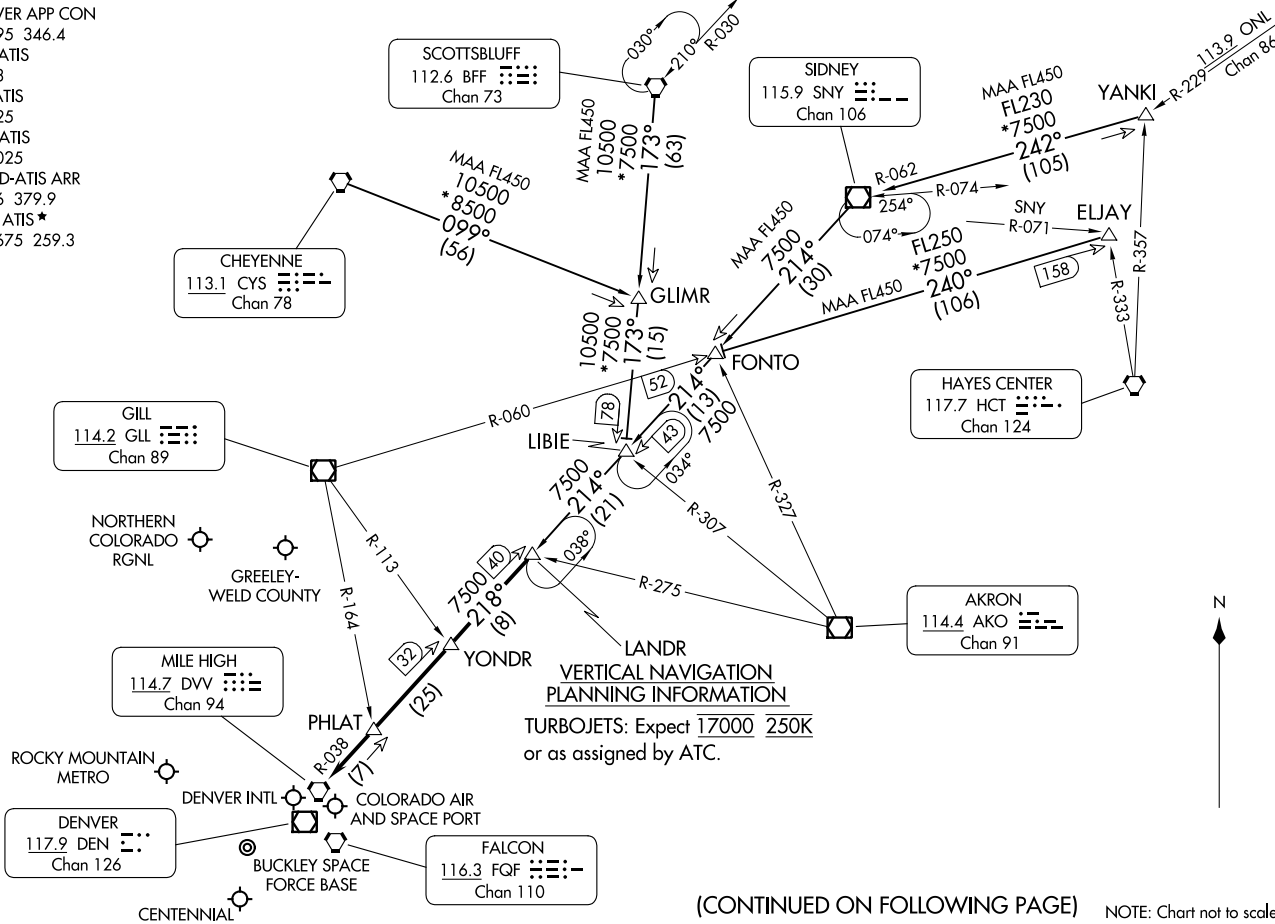
(LANDR.LANDR3) 23334  
LANDR THREE ARRIVAL

AL-9077 (FAA)

DENVER, COLORADO

DENVER APP CON  
124.95 346.4  
APA ATIS  
120.3  
BJC ATIS  
126.25  
CFO ATIS  
119.025  
DEN D-ATIS ARR  
125.6 379.9  
KBKF ATIS\*  
119.675 259.3

DENVER, COLORADO



(CONTINUED ON FOLLOWING PAGE)

NOTE: Chart not to scale.

ARRIVAL ROUTE DESCRIPTION

CHEYENNE TRANSITION (CYS.LANDR3): From over CYS VORTAC on CYS R-099 and BFF R-173 to LIBIE, then on SNY R-214 and DVV R-038 to LANDR. Thence. . . .

ELJAY TRANSITION (ELJAY.LANDR3): From over ELJAY on GLL R-060 to FONTO, then on SNY R-214 and DVV R-038 to LANDR. Thence. . . .

SCOTTSBLUFF TRANSITION (BFF.LANDR3): From over BFF VORTAC on BFF R-173 to LIBIE, then on SNY R-214 and DVV R-038 to LANDR. Thence. . . .

SIDNEY TRANSITION (SNY.LANDR3): From over SNY VOR/DME on SNY R-214 to FONTO, then on SNY R-214 and DVV R-038 to LANDR. Thence. . . .

YANKI TRANSITION (YANKI.LANDR3): From over YANKI on SNY R-062 to SNY VOR/DME, then on SNY R-214 and DVV R-038 to LANDR. Thence. . . .

. . . .from over LANDR on DVV R-038 to DVV VORTAC. Expect RADAR vectors to the final approach course at or before DVV VORTAC.

SW-1, 22 FEB 2024 to 21 MAR 2024

SW-1, 22 FEB 2024 to 21 MAR 2024

# LARKS THREE ARRIVAL

AL-9077 (FAA)

DENVER, COLORADO

DENVER APP CON  
 120.35 379.3  
 APA ATIS  
 120.3  
 BJC ATIS  
 126.25  
 CFO ATIS  
 119.025  
 DEN D-ATIS ARR  
 125.6 379.9  
 FNL ATIS  
 135.075  
 KBKF ATIS\*  
 119.675 259.3

GILL  
 114.2 GLL  
 Chan 89

NORTHERN  
 COLORADO  
 RGNL

GREELEY-  
 WELD COUNTY

DENVER  
 117.9 DEN  
 Chan 126

ROCKY  
 MOUNTAIN  
 METRO

COLORADO  
 AIR AND  
 SPACE  
 PORT

JEFFCO  
 115.4 BJC  
 Chan 101

BUCKLEY  
 SPACE FORCE  
 BASE

DENVER  
 INTL

RED TABLE  
 113.0 DBL  
 Chan 77

**LARKS  
 TURBOJET VERTICAL NAVIGATION  
 PLANNING INFORMATION**

Expect 17000 250K  
 or as assigned by ATC.

PAYDD

FALCON  
 116.3 FGF  
 Chan 110

HUUGE

TERRO

MURFE

BLACK FOREST  
 112.5 BRK  
 Chan 72

BLUE MESA  
 114.9 HBU  
 Chan 96

HICKY

KANON

MAA FL450  
 FL200  
 267°  
 (74)

PUEBLO  
 116.7 PUB  
 Chan 114

17000  
 \*16500  
 053°  
 (50)

FL280  
 040°  
 (28)

MAA FL450  
 FL310  
 022°  
 (30)

MAA FL450  
 FL310  
 022°  
 (100)

MAA FL450  
 FL200  
 339°  
 (63)

RATTLESNAKE  
 115.3 RSK  
 Chan 100

ALAMOS  
 113.9 ALS  
 Chan 86

NOTE: Adjacent STAR is POWDR ARRIVAL.

NOTE: RADAR required.

NOTE: Chart not to scale.

(CONTINUED ON FOLLOWING PAGE)

SW-1, 22 FEB 2024 to 21 MAR 2024

SW-1, 22 FEB 2024 to 21 MAR 2024

# LARKS THREE ARRIVAL

DENVER, COLORADO

ARRIVAL ROUTE DESCRIPTION

ALAMOSA TRANSITION (ALS.LARKS3): From over ALS VORTAC on ALS R-339 and FQF R-220 to LARKS. Thence. . . .

BLUE MESA TRANSITION (HBU.LARKS3): From over HBU VOR/DME on HBU R-053 and FQF R-220 to LARKS. Thence. . . .

LOPEC TRANSITION (LOPEC.LARKS3): From over LOPEC on RSK R-022 and FQF R-220 to LARKS. Thence. . . .

PUEBLO TRANSITION (PUB.LARKS3): From over PUB VORTAC on PUB R-267 to KANON, then on ALS R-339 and FQF R-220 to LARKS. Thence. . . .

RATTLESNAKE TRANSITION (RSK.LARKS3): From over RSK VORTAC on RSK R-022 and FQF R-220 to LARKS. Thence. . . .

. . . .from over LARKS on FQF R-220 to FALCON (FQF) VORTAC. Expect RADAR vectors to the final approach course at or before FALCON (FQF) VORTAC.

SW-1, 22 FEB 2024 to 21 MAR 2024

SW-1, 22 FEB 2024 to 21 MAR 2024

POWDR ONE ARRIVAL  
(POWDR.POWDR1) 30JAN20

DENVER APP CON  
120.35 379.3  
APA ATIS  
120.3  
BJC ATIS  
126.25  
CFO ATIS  
119.025  
DEN D-ATIS ARR  
125.6 379.9  
KBKF ATIS\*  
119.675 259.3

GILL  
114.2 GLL  
Chan 89

NORTHERN  
COLORADO  
RGNL

GREELEY-WELD  
COUNTY

MILE HIGH  
114.7 DVV  
Chan 94

ROCKY  
MOUNTAIN  
METRO

DENVER  
INTL

DENVER  
117.9 DEN  
Chan 126

COLORADO AIR AND  
SPACE PORT

BUCKLEY  
SPACE FORCE  
BASE

FALCON  
116.3 FQF  
Chan 110

CENTENNIAL

POWDR  
VERTICAL NAVIGATION  
PLANNING INFORMATION  
TURBOJETS: Expect FL190 250K  
or as assigned by ATC.

KREMMLING  
113.8 RLG  
Chan 85

RED TABLE  
113.0 DBL  
Chan 77

GRAND JUNCTION  
112.4 JNC  
Chan 71

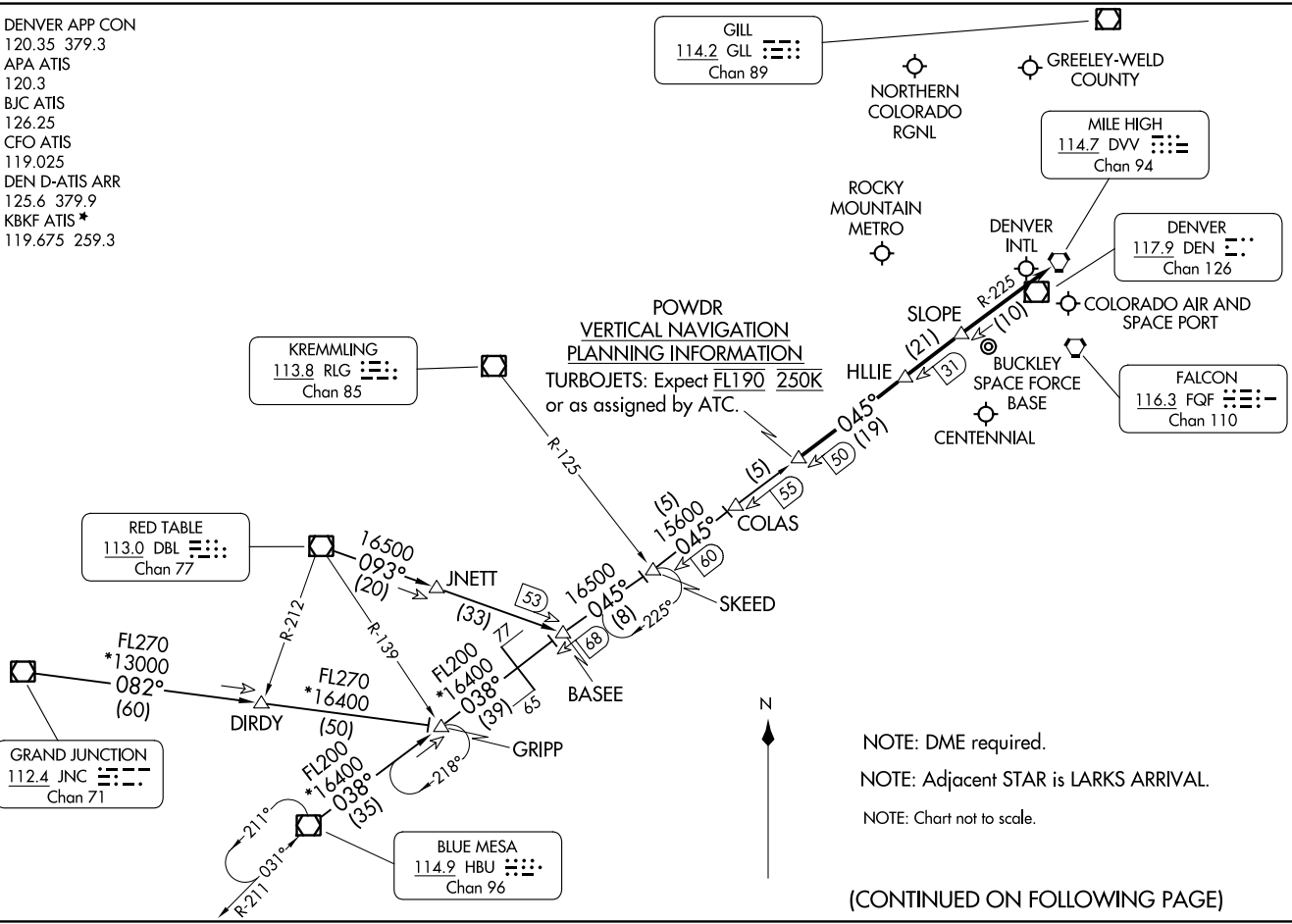
BLUE MESA  
114.9 HBU  
Chan 96

DENVER, COLORADO

(POWDR.POWDR1) 23334  
POWDR ONE ARRIVAL

AL-9077 (FAA)

DENVER, COLORADO



NOTE: DME required.  
NOTE: Adjacent STAR is LARKS ARRIVAL.  
NOTE: Chart not to scale.

(CONTINUED ON FOLLOWING PAGE)

ARRIVAL ROUTE DESCRIPTION

BLUE MESA TRANSITION (HBU.POWDR1): From over HBU VOR/DME on HBU R-038 to GRIPP then on HBU R-038 and DVV R-225 to BASEE then on DVV R-225 to POWDR. Thence. . . .

GRAND JUNCTION TRANSITION (JNC.POWDR1): From over JNC VOR/DME on JNC R-082 to GRIPP; then on HBU R-038 and DVV R-225 to BASEE then on DVV R-225 to POWDR. Thence. . . .

RED TABLE TRANSITION (DBL.POWDR1): From over DBL VOR/DME on DBL R-093 and DVV R-225 to POWDR. Thence. . . .

. . . .from over POWDR on the DVV VORTAC R-225 to HLLIE, then on DVV VORTAC R-225 to SLOPE, then on DVV VORTAC R-225 to DVV. Expect RADAR vectors to the final approach course at or before DVV VORTAC.

SW-1, 22 FEB 2024 to 21 MAR 2024

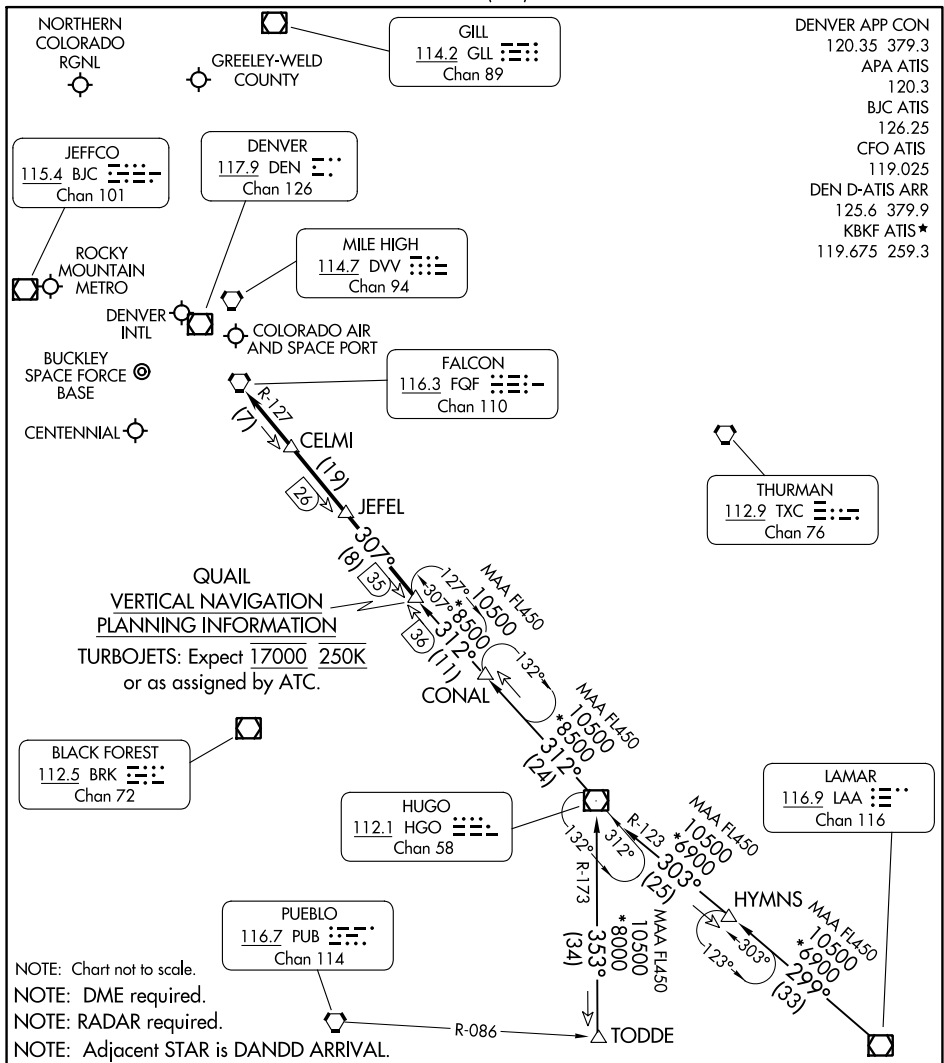
SW-1, 22 FEB 2024 to 21 MAR 2024



# QUAIL ONE ARRIVAL

AL-9077 (FAA)

DENVER, COLORADO



## ARRIVAL ROUTE DESCRIPTION

**HUGO TRANSITION (HGO.QUAIL1):** From over HGO VOR/DME on HGO R-312 to QUAIL. Thence. . .

**LAMAR TRANSITION (LAA.QUAIL1):** From over LAA VOR/DME on LAA R-299 and HGO R-123 to HGO VOR/DME, then on HGO R-312 to QUAIL. Thence. . .

**TODDE TRANSITION (TODDE.QUAIL1):** From over TODDE on HGO R-173 to HGO VOR/DME, then on HGO R-312 to QUAIL. Thence. . .

. . . from over QUAIL on HGO R-312 and FQF R-127 to FQF VORTAC. Expect RADAR vectors to the final approach course at or before FQF VORTAC.

# QUAIL ONE ARRIVAL

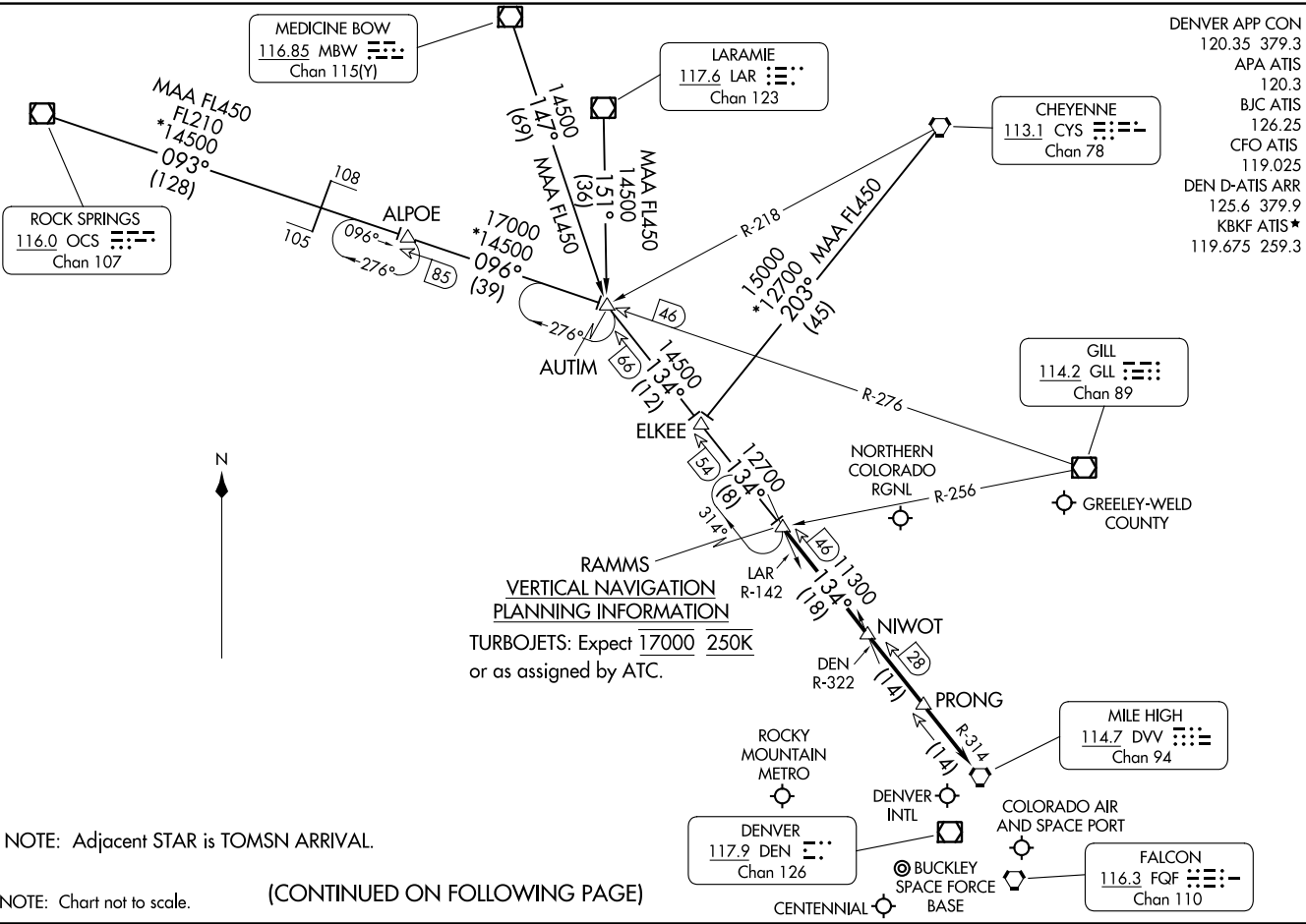
DENVER, COLORADO

SW-1, 22 FEB 2024 to 21 MAR 2024

SW-1, 22 FEB 2024 to 21 MAR 2024

- DENVER APP CON 120.35 379.3
- APA ATIS 120.3
- BJC ATIS 126.25
- CFO ATIS 119.025
- DEN D-ATIS ARR 125.6 379.9
- KBKF ATIS\* 119.675 259.3

SW-1, 22 FEB 2024 to 21 MAR 2024



NOTE: Adjacent STAR is TOMSN ARRIVAL.

NOTE: Chart not to scale.

(CONTINUED ON FOLLOWING PAGE)

SW-1, 22 FEB 2024 to 21 MAR 2024

ARRIVAL ROUTE DESCRIPTION

CHEYENNE TRANSITION (CYS.RAMMS8): From over CYS VORTAC on CYS R-203 and DVV R-314 to RAMMS. Thence. . . .

LARAMIE TRANSITION (LAR.RAMMS8): From over LAR VOR/DME on LAR R-151 and DVV R-314 to RAMMS. Thence. . . .

MEDICINE BOW TRANSITION (MBW.RAMMS8): From over MBW VOR/DME on MBW R-147 and DVV R-314 to RAMMS. Thence. . . .

ROCK SPRINGS TRANSITION (OCS.RAMMS8): From over OCS VOR/DME on OCS R-093 and GLL R-276 to ALPOE then on GLL R-276 and DVV R-314 to RAMMS. Thence. . . .

. . . .from over RAMMS on DVV R-314 to DVV VORTAC. Expect RADAR vectors to the final approach course at or before DVV VORTAC.

SW-1, 22 FEB 2024 to 21 MAR 2024

SW-1, 22 FEB 2024 to 21 MAR 2024

TOMSN EIGHT ARRIVAL  
(TOMSN, TOMSN8) 30JAN20

(TOMSN, TOMSN8) 23334  
TOMSN EIGHT ARRIVAL

AL-9077 (FAA)

DENVER, COLORADO

DENVER APP CON  
119.3 307.3  
APA ATIS  
120.3  
BJC ATIS  
126.25  
CFO ATIS  
119.025  
DEN D-ATIS ARR  
125.6 379.9  
KBKF ATIS\*  
119.675 259.3

HAYDEN  
115.6 CHE  
Chan 103

LARAMIE  
117.6 LAR  
Chan 123

CHEYENNE  
113.1 CYS  
Chan 78

GILL  
114.2 GLL  
Chan 89

MILE HIGH  
114.7 DVV  
Chan 94

DENVER  
117.9 DEN  
Chan 126

FALCON  
116.3 FGF  
Chan 110

MEEKER  
115.2 EKR  
Chan 99

KREMMLING  
113.8 RLG  
Chan 85

JEFFCO  
115.4 BJC  
Chan 101

GOULL  
DME required for GOULL  
holding pattern.

**TOMSN  
VERTICAL NAVIGATION  
PLANNING INFORMATION**

Turbojets landing DEN:  
Expect FL190 250K  
or as assigned by ATC.

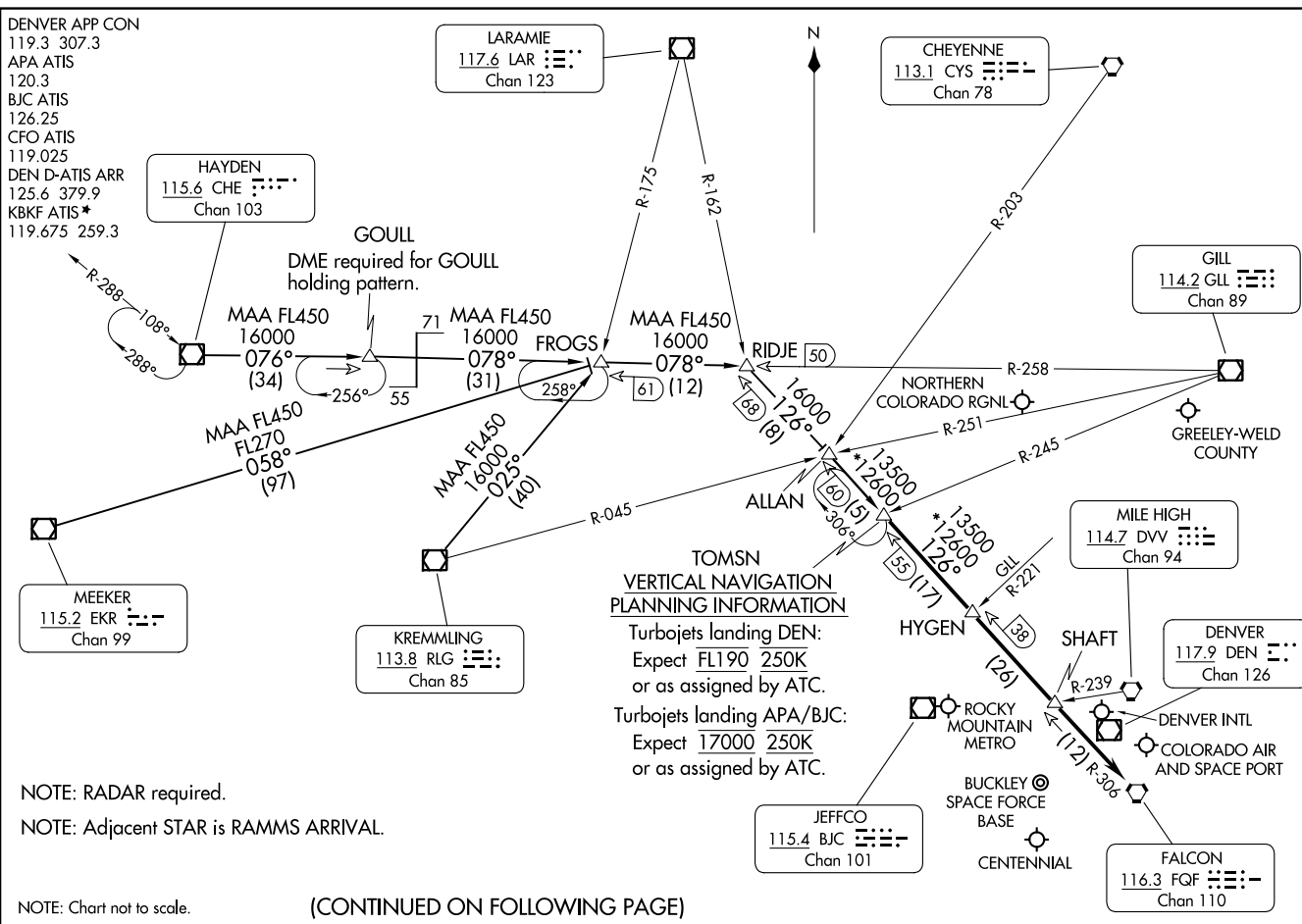
Turbojets landing APA/BJC:  
Expect 17000 250K  
or as assigned by ATC.

NOTE: RADAR required.

NOTE: Adjacent STAR is RAMMS ARRIVAL.

NOTE: Chart not to scale.

(CONTINUED ON FOLLOWING PAGE)



ARRIVAL ROUTE DESCRIPTION

HAYDEN TRANSITION (CHE.TOMSN8): From over CHE VOR/DME on CHE R-076 and GLL R-258 to RIDJE, then on FQF R-306 to TOMSN. Thence. . . .

KREMLING TRANSITION (RLG.TOMSN8): From over RLG VOR/DME on RLG R-025 and GLL R-258 to RIDJE, then on FQF R-306 to TOMSN. Thence. . . .

MEEKER TRANSITION (EKR.TOMSN8): From over EKR VOR/DME on EKR R-058 and GLL R-258 to RIDJE, then on FQF R-306 to TOMSN. Thence. . . .

. . . .from over TOMSN on FQF R-306 to FQF VORTAC. Expect RADAR vectors to the final approach course at or before FQF VORTAC.

SW-1, 22 FEB 2024 to 21 MAR 2024

SW-1, 22 FEB 2024 to 21 MAR 2024