

LOC I-BZX <b>111.5</b>	APP CRS <b>131°</b>	Rwy Idg <b>8794</b>
		TDZE <b>1655</b>
		Apt Elev <b>1661</b>

# ILS or LOC RWY 13

BISMARCK MUNI (BIS)

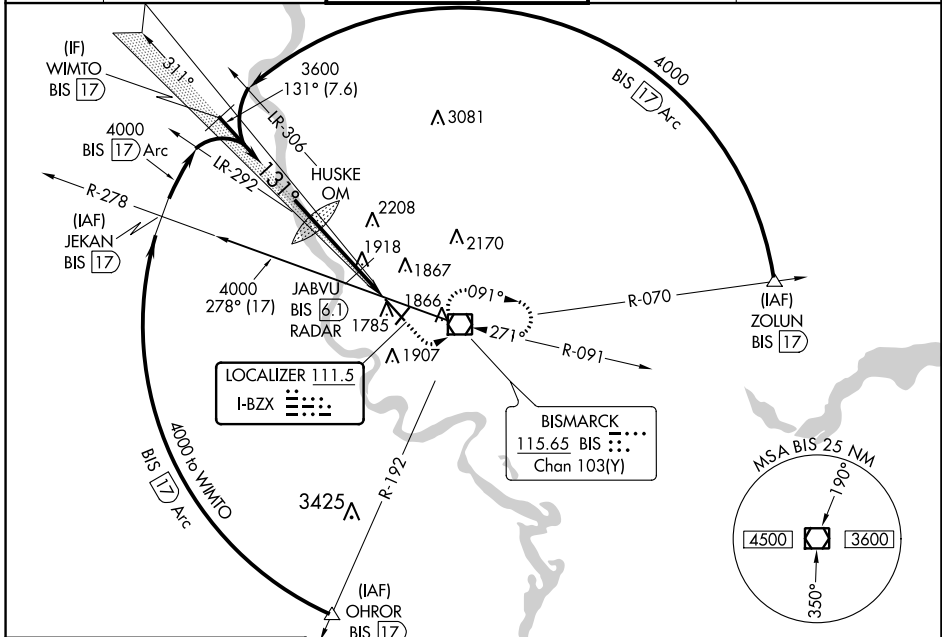
DME required for procedure entry. DME required.

**ASR**  
Inop table does not apply to S-ILS 13. DME from BIS VOR/DME. Simultaneous reception of I-BZX and BIS DME required. # DME from BIS VOR/DME.



**MISSED APPROACH:** Climb to 2200 then climbing left turn to 3600 direct BIS VOR/DME and hold, continue climb-in-hold to 3600.

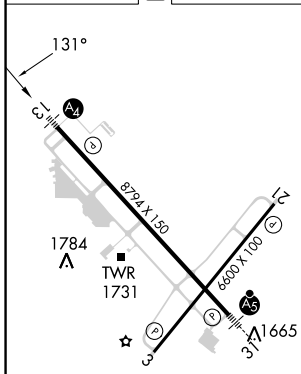
ATIS <b>119.35</b>	BISMARCK APP CON ★ <b>126.3 298.9</b>	BISMARCK TOWER★ <b>118.3 (CTAF) 0 257.8</b>	GND CON <b>121.9</b>	UNICOM <b>122.95</b>
-----------------------	--	--	-------------------------	-------------------------



NC-1, 22 FEB 2024 to 21 MAR 2024

NC-1, 22 FEB 2024 to 21 MAR 2024

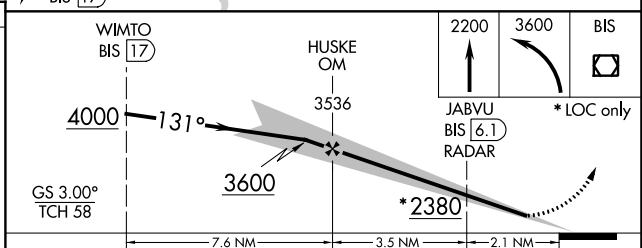
ELEV 1661	<b>D</b>	TDZE 1655
-----------	----------	-----------



REIL Rwy 3 and 21  
HIRL Rwy 3-21 and 13-31

FAF to MAP 5.6 NM

Knots	60	90	120	150	180
Min:Sec	5:36	3:44	2:48	2:14	1:52



CATEGORY	A	B	C	D
S-ILS 13	1855- <sup>3</sup> / <sub>4</sub> 200 (200- <sup>3</sup> / <sub>4</sub> )			
S-LOC 13	2380- <sup>3</sup> / <sub>4</sub>	725 (800- <sup>3</sup> / <sub>4</sub> )	2380-1 <sup>3</sup> / <sub>4</sub>	725 (800-1 <sup>3</sup> / <sub>4</sub> )
<b>C</b> CIRCLING	2380-1	719 (800-1)	2460-2 <sup>1</sup> / <sub>4</sub> 799 (800-2 <sup>1</sup> / <sub>4</sub> )	2460-2 <sup>1</sup> / <sub>2</sub> 799 (800-2 <sup>1</sup> / <sub>2</sub> )
# JABVU FIX MINIMUMS				
S-LOC 13	2180- <sup>3</sup> / <sub>4</sub>	525 (600- <sup>3</sup> / <sub>4</sub> )	2180-1 <sup>1</sup> / <sub>4</sub>	525 (600-1 <sup>1</sup> / <sub>4</sub> )
<b>C</b> CIRCLING	2200-1	539 (600-1)	2460-2 <sup>1</sup> / <sub>4</sub> 799 (800-2 <sup>1</sup> / <sub>4</sub> )	2460-2 <sup>1</sup> / <sub>2</sub> 799 (800-2 <sup>1</sup> / <sub>2</sub> )

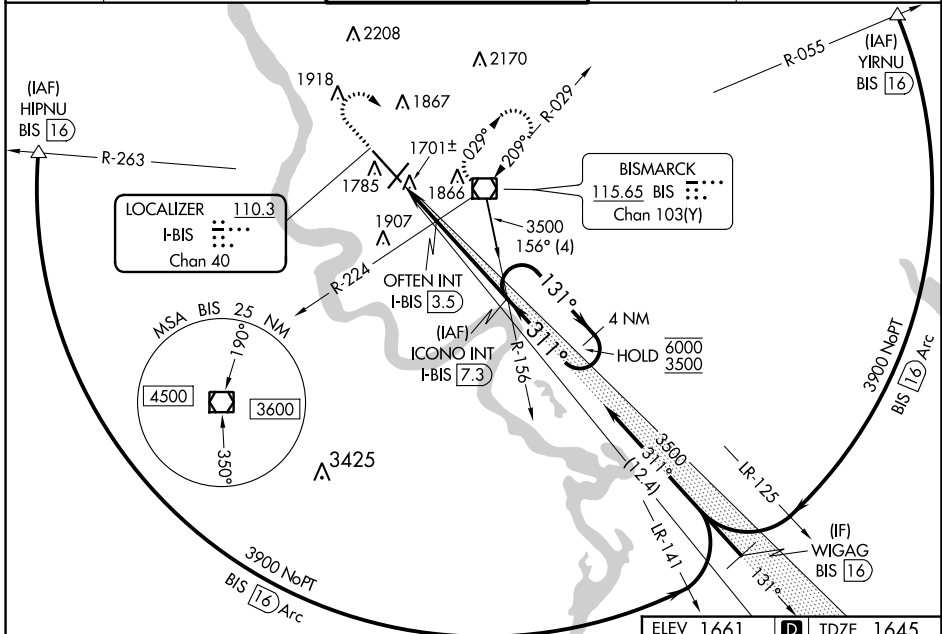
LOC/DME I-BIS <b>110.3</b> Chan 40	APP CRS <b>311°</b>	Rwy ldg TDZE Apt Elev	<b>8794</b> <b>1645</b> <b>1661</b>
--	------------------------	-----------------------------	---

# ILS or LOC RWY 31

BISMARCK MUNI (BIS)

DME required for procedure entry.		MALSR	MISSED APPROACH: Climb to 2800 then climbing right turn to 3600 direct BIS VOR/DME and hold.
Autopilot coupled approach NA below 2680. For inop ALS, increase S-LOC 31 OFTEN FIX Cat C/D minimums visibility to RVR 5500.		ASR	

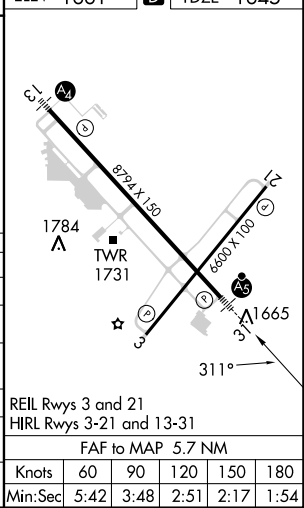
ATIS <b>119.35</b>	BISMARCK APP CON* <b>126.3 298.9</b>	BISMARCK TOWER* <b>118.3 (CTAF) 0 257.8</b>	GND CON <b>121.9</b>	UNICOM <b>122.95</b>
-----------------------	---	--	-------------------------	-------------------------



NC-1, 22 FEB 2024 to 21 MAR 2024

NC-1, 22 FEB 2024 to 21 MAR 2024

ELEV 1661	D	TDZE 1645		
2800	3600	BIS		
Use I-BIS DME when on the localizer course.	ICONO INT I-BIS 7.3	4 NM Holding Pattern		
OFTEN INT I-BIS 3.5	3500			
*LOC only.	*I-BIS 2.6	131° → 6000		
I-BIS 1.6	2300*	← 311° ← 3500		
		← 311° ← 3500		
		GS 3.00° TCH 48		
	1 NM	0.9 NM		
		3.8 NM		
CATEGORY	A	B	C	D
S-ILS 31		1845/24	200 (200-½)	
S-LOC 31	2300/24	655 (700-½)	2300-1¾	655 (700-1¾)
CIRCLING	2300-1	639 (700-1)	2460-2¼ 799 (800-2¼)	2460-2½ 799 (800-2½)
OFTEN FIX MINIMUMS (DUAL VOR RECEIVERS OR DME REQUIRED)				
S-LOC 31	2020/24	375 (400-½)	2020/35	375 (400-¾)
CIRCLING	2240-1	579 (600-1)	2460-2¼ 799 (800-2¼)	2460-2½ 799 (800-2½)



REIL Rwy 3 and 21				
HIRL Rwy 3-21 and 13-31				
FAF to MAP 5.7 NM				
Knots	60	90	120	150
Min:Sec	5:42	3:48	2:51	2:17

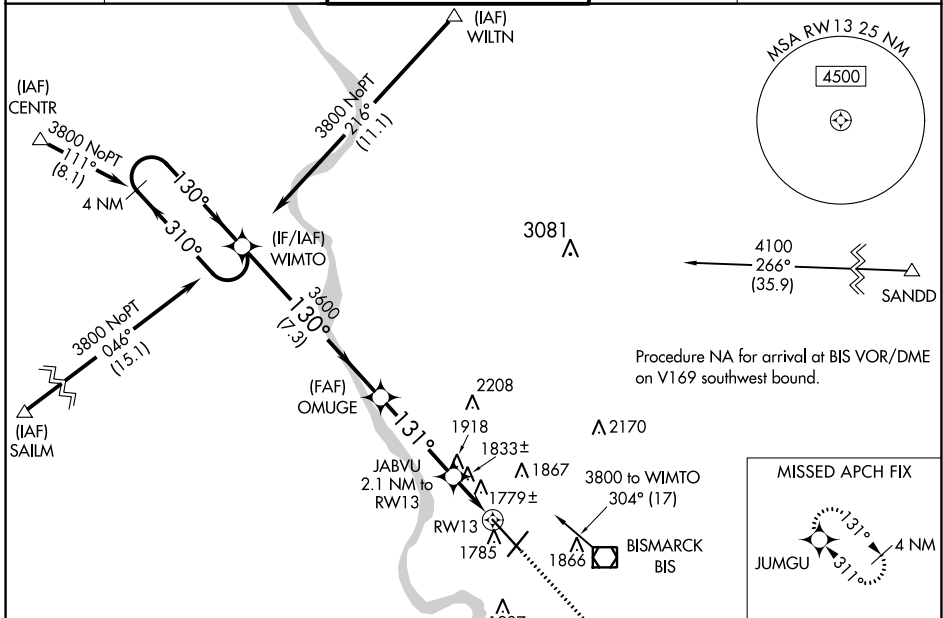
WAAS CH <b>86920</b> <b>W13A</b>	APP CRS <b>131°</b>	Rwy Idg <b>8794</b> TDZE <b>1655</b> Apt Elev <b>1661</b>
--	------------------------	---

# RNAV (GPS) RWY 13

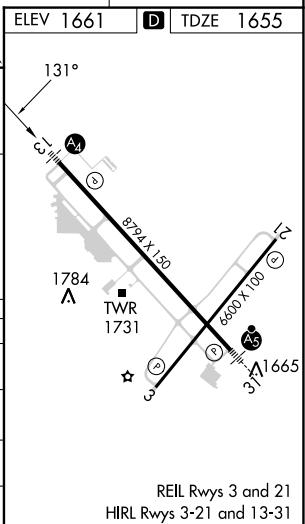
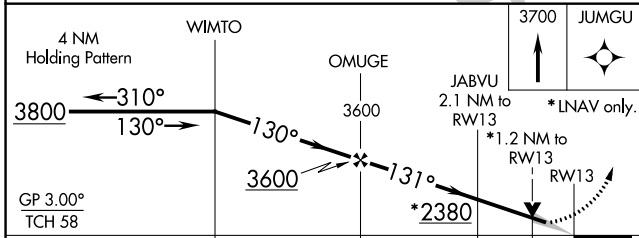
BISMARCK MUNI (BIS)

<p>ASR</p>	<p>Inoperative table does not apply. For uncompensated Baro-VNAV systems, LNAV/VNAV NA below -18°C (0°F) or above 33°C (91°F). DME/DME RNP-0.3 NA.</p>	<p>MALS</p>	<p>MISSED APPROACH: Climb to 3700 direct JUMGU and hold.</p>

<p>ATIS</p> <p><b>119.35</b></p>	<p>BISMARCK APP CON *</p> <p><b>126.3 298.9</b></p>	<p>BISMARCK TOWER *</p> <p><b>118.3 (CTAF) 0 257.8</b></p>	<p>GND CON</p> <p><b>121.9</b></p>	<p>UNICOM</p> <p><b>122.95</b></p>
----------------------------------	---	--	------------------------------------	------------------------------------



ELEV 1661	<b>D</b>	TDZE 1655
-----------	----------	-----------



CATEGORY	A	B	C	D
LPV DA	1855-3/4		200 (200-3/4)	
LNAV/VNAV DA	2083-1 3/8		428 (500-1 3/8)	
LNAV MDA	2100-1	445 (500-1)	2100-1 3/8	445 (500-1 3/8)
<b>C</b> CIRCLING	2200-1	539 (600-1)	2460-2 1/4	2460-2 1/2
			799 (800-2 1/4)	799 (800-2 1/2)

NC-1, 22 FEB 2024 to 21 MAR 2024

NC-1, 22 FEB 2024 to 21 MAR 2024

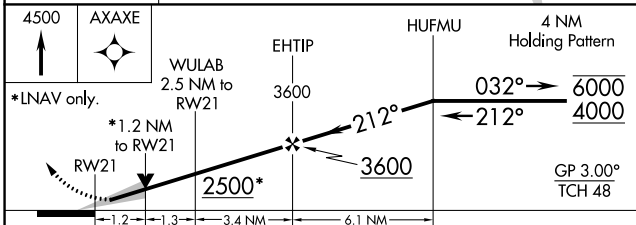
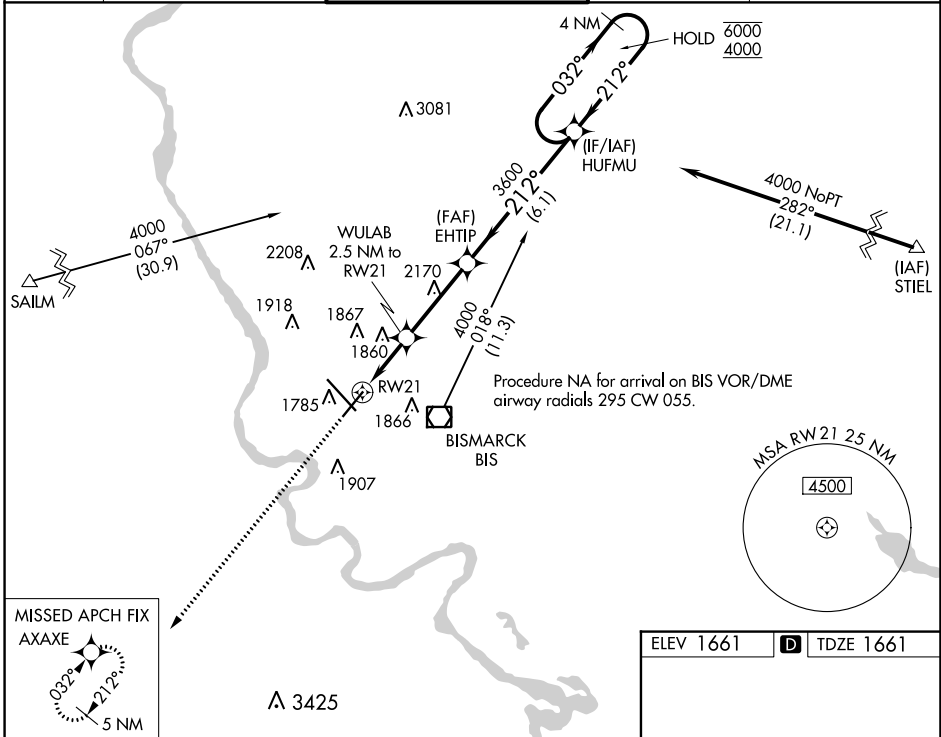
WAAS CH <b>53520</b> <b>W21A</b>	APP CRS <b>212°</b>	Rwy ldg TDZE Apt Elev	<b>6600</b> <b>1661</b> <b>1661</b>
--	------------------------	-----------------------------	---

# RNAV (GPS) RWY 21

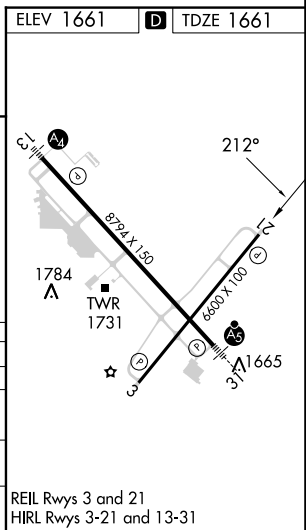
BISMARCK MUNI (BIS)

RNP APCH.		MISSED APPROACH: Climb to 4500 direct AXAXE and hold.	
ASR		For uncompensated Baro-VNAV systems, LNAV/VNAV NA below -22°C or above 54°C.	

ATIS <b>119.35</b>	BISMARCK APP CON * <b>126.3 298.9</b>	BISMARCK TOWER * <b>118.3 (CTAF) 0 257.8</b>	GND CON <b>121.9</b>	UNICOM <b>122.95</b>
-----------------------	--	---	-------------------------	-------------------------



CATEGORY	A	B	C	D
LPV DA		1861-3/4	200 (200-3/4)	
LNAV/VNAV DA		1970-7/8	309 (400-7/8)	
LNAV MDA	2100-1	439 (500-1)	2100-1 1/4	439 (500-1 1/4)
CIRCLING	2200-1	539 (600-1)	2460-2 1/4 799 (800-2 1/4)	2460-2 1/2 799 (800-2 1/2)



NC-1, 22 FEB 2024 to 21 MAR 2024

NC-1, 22 FEB 2024 to 21 MAR 2024

WAAS CH <b>63099</b> <b>W03A</b>	APP CRS <b>032°</b>	Rwy Idg TDZE Apt Elev	<b>6600</b> <b>1661</b> <b>1661</b>
--	------------------------	-----------------------------	---

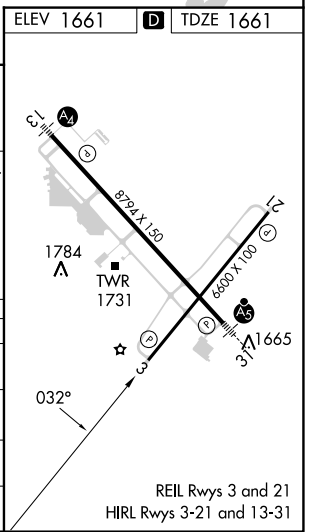
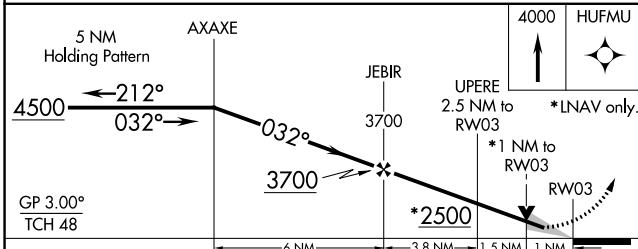
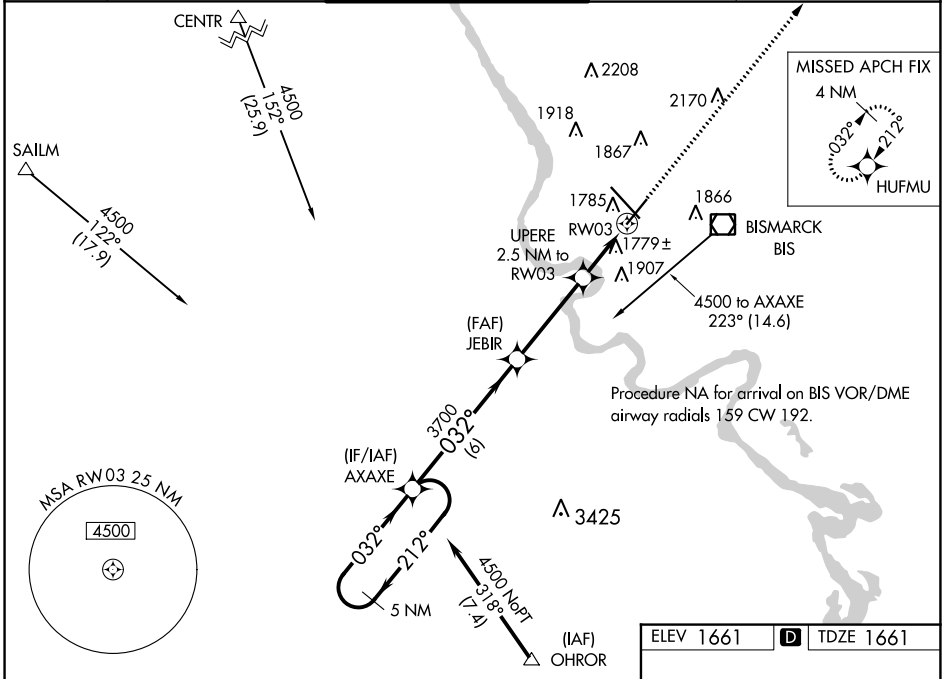
# RNAV (GPS) RWY 3

BISMARCK MUNI (BIS)

**ASR** For uncompensated Baro-VNAV systems, LNAV/VNAV NA below -18°C (0°F) or above 33°C (91°F). DME/DME RNP-0.3 NA.

MISSED APPROACH: Climb to 4000 direct HUFMU and hold.

ATIS <b>119.35</b>	BISMARCK APP CON * <b>126.3 298.9</b>	BISMARCK TOWER * <b>118.3 (CTAF) 0 257.8</b>	GND CON <b>121.9</b>	UNICOM <b>122.95</b>
-----------------------	--	---	-------------------------	-------------------------



CATEGORY	A	B	C	D
LPV DA		1861-3/4	200 (200-3/4)	
LNAV/VNAV DA		2081-13/8	420 (500-13/8)	
LNAV MDA		2040-1	379 (400-1)	
<b>C</b> CIRCLING	2200-1	539 (600-1)	2460-2 1/4 799 (800-2 1/4)	2460-2 1/2 799 (800-2 1/2)

NC-1, 22 FEB 2024 to 21 MAR 2024

NC-1, 22 FEB 2024 to 21 MAR 2024

WAAS CH <b>56599</b> <b>W31A</b>	APP CRS <b>311°</b>	Rwy Idg TDZE Apt Elev	<b>8794</b> <b>1645</b> <b>1661</b>
--	------------------------	-----------------------------	---

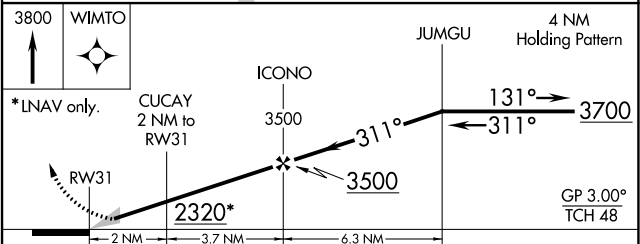
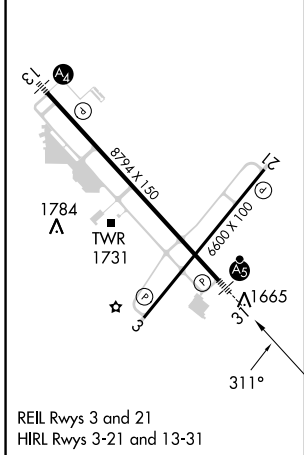
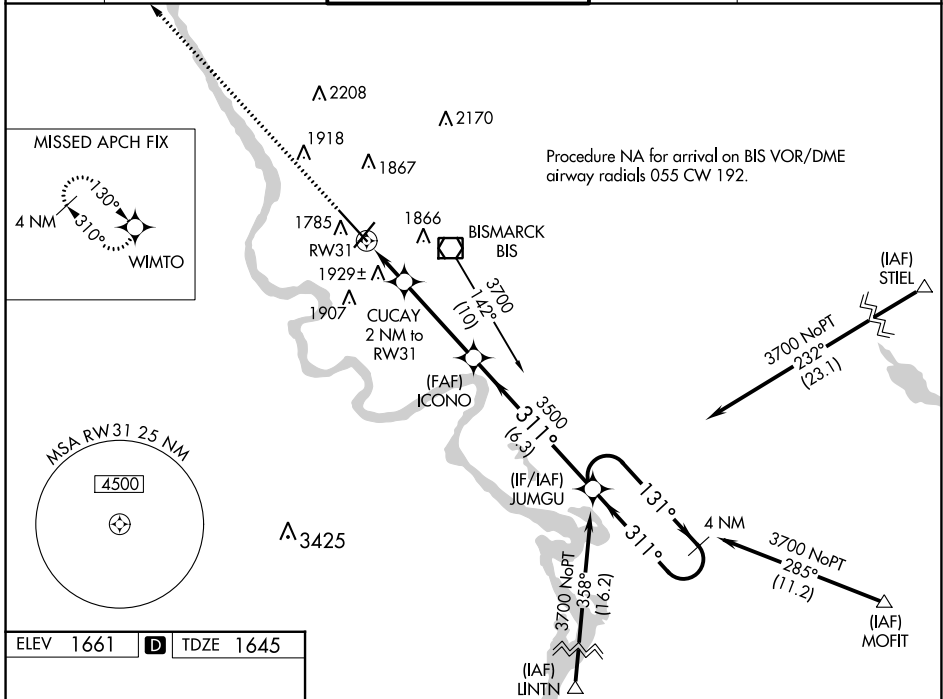
# RNAV (GPS) RWY 31

BISMARCK MUNI (BIS)

**ASR** For uncompensated Baro-VNAV systems, LNAV/VNAV NA below -18°C (0°F) or above 33°C (91°F). DME/DME RNP-0.3 NA. \*\* RVR 1800 authorized with use of FD or AP or HUD to DA.

**MALS** MISSED APPROACH: Climb to 3800 direct WIMTO and hold.

ATIS <b>119.35</b>	BISMARCK APP CON* <b>126.3 298.9</b>	BISMARCK TOWER* <b>118.3 (CTAF) 257.8</b>	GND CON <b>121.9</b>	UNICOM <b>122.95</b>
-----------------------	---	--	-------------------------	-------------------------



CATEGORY	A	B	C	D
LPV DA	1845/24 200 (200-½)			
LNAV/VNAV DA	2269-1¾ 624 (700-1¾)			
LNAV MDA	2180/24	535 (600-½)	2180/55	535 (600-1)
<b>CIRCLING</b>	2200-1	539 (600-1)	2460-2¼ 799 (800-2¼)	2460-2½ 799 (800-2½)

NC-1, 22 FEB 2024 to 21 MAR 2024

NC-1, 22 FEB 2024 to 21 MAR 2024

VOR/DME BIS <b>115.65</b> Chan <b>103(Y)</b>	APP CRS <b>271°</b>	Rwy ldg TDZE Apt Elev <b>N/A</b> <b>N/A</b> <b>1661</b>
--	------------------------	--

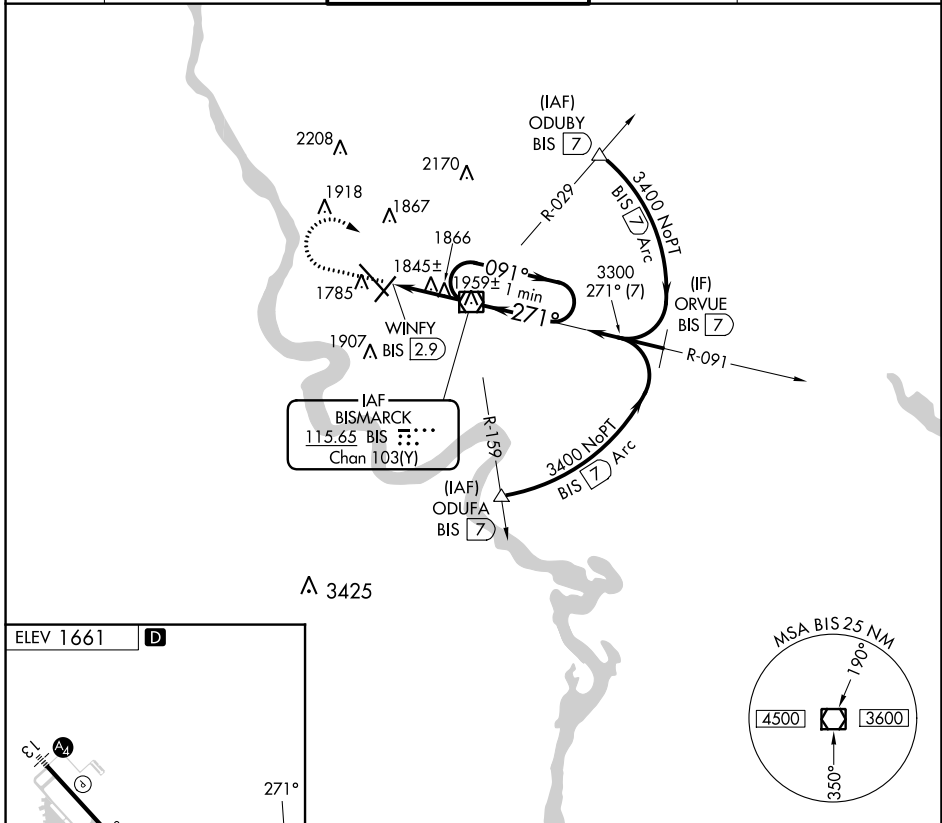
# VOR-A

BISMARCK MUNI (BIS)

**ASR**

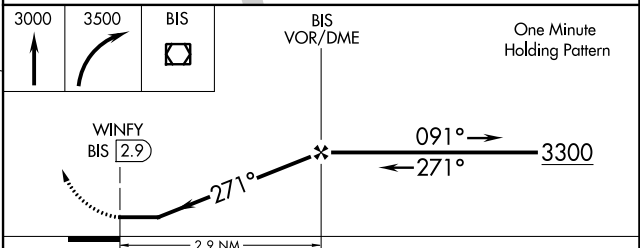
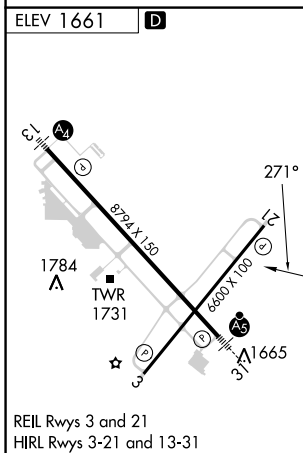
MISSED APPROACH: Climb to 3000 then climbing right turn to 3500 direct BIS VOR/DME and hold.

ATIS <b>119.35</b>	BISMARCK APP CON * <b>126.3 298.9</b>	BISMARCK TOWER * <b>118.3 (CTAF) 0 257.8</b>	GND CON <b>121.9</b>	UNICOM <b>122.95</b>
-----------------------	--	---	-------------------------	-------------------------



NC-1, 22 FEB 2024 to 21 MAR 2024

NC-1, 22 FEB 2024 to 21 MAR 2024



FAF to MAP 2.9 NM					
Knots	60	90	120	150	180
Min:Sec	2:54	1:56	1:27	1:10	0:58
CATEGORY	A	B	C	D	
<input checked="" type="checkbox"/> CIRCLING	2200-1	539 (600-1)	2460-2¼ 799 (800-2¼)	2460-2½ 799 (800-2½)	