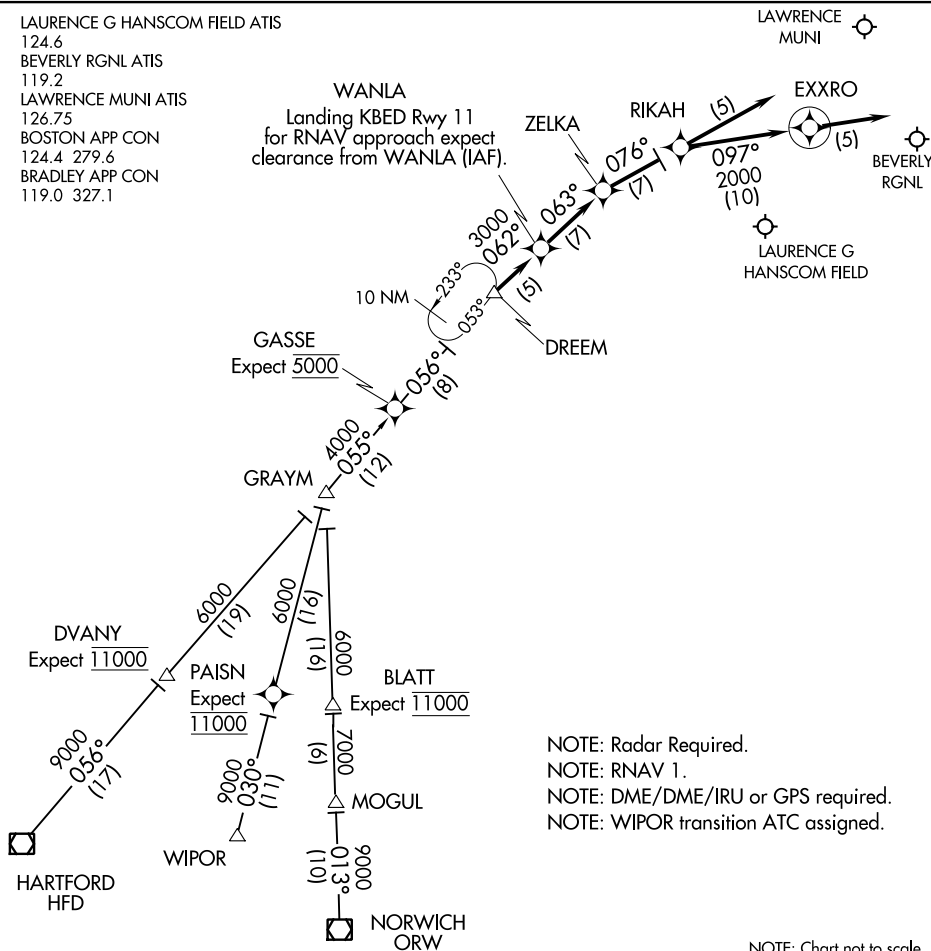


DREEM TWO ARRIVAL (RNAV)

BEDFORD, MASSACHUSETTS

LAURENCE G HANSCOM FIELD ATIS
 124.6
 BEVERLY RGNL ATIS
 119.2
 LAWRENCE MUNI ATIS
 126.75
 BOSTON APP CON
 124.4 279.6
 BRADLEY APP CON
 119.0 327.1

WANLA
 Landing KBED Rwy 11
 for RNAV approach expect
 clearance from WANLA (IAF).



NOTE: Radar Required.
 NOTE: RNAV 1.
 NOTE: DME/DME/IRU or GPS required.
 NOTE: WIPOR transition ATC assigned.

NOTE: Chart not to scale.

HARTFORD TRANSITION (HFD.DREEM2):
NORWICH TRANSITION (ORW.DREEM2):
WIPOR TRANSITION (WIPOR.DREEM2):

LANDING BVY ALL RWYS, BED RWY 23 & 29: From DREEM on track 062° to WANLA , then on track 063° to ZELKA, then on track 076° to RIKAH, then on track 097° to EXXRO, then on track 097°. Expect radar vectors to destination airport and final approach course.

LANDING BED RWY 11: From DREEM on track 062° to WANLA, then on track 063° to ZELKA. Expect ILS approach.

LANDING LWM ALL RWYS: From DREEM on track 062° to WANLA, then on track 063° to ZELKA, then on track 076° to RIKAH, then on track 076°, expect radar vectors to final approach course.

DREEM TWO ARRIVAL (RNAV)

BEDFORD, MASSACHUSETTS

(GRAYM.GRAYM6) 18312
GRAYM SIX ARRIVAL

AL-626 (FAA)

BEDFORD, MASSACHUSETTS

LAURENCE G HANSCOM FIELD ATIS
 124.6
 BEVERLY RGNL ATIS
 119.2
 LAWRENCE MUNI ATIS
 126.75
 BOSTON APP CON
 124.4 279.6
 BRADLEY APP CON
 119.0 327.1

GARDNER
 110.6 GDM
 Chan 43

LAWRENCE
 MUNI

FITCHBURG
 MUNI

BEVERLY
 RGNL

LAURENCE G
 HANSCOM FIELD

DREEM
 N42°21.71'
 W71°44.57'

RNAV Equipped Aircraft: Proceed direct destination. Expect RADAR vectors to approach course.
 Non-RNAV Equipped Aircraft: Expect RADAR vectors to approach course.

GASSE
 N42°15.77'
 W71°51.29'
 Expect 5000

GRAYM
 N42°06.07'
 W72°01.89'

DVANY
 N41°51.74'
 W72°18.19'
 Expect 11000

BLATT
 N41°49.62'
 W72°00.92'
 Expect 11000

PAISN
 N41°50.38'
 W72°07.04'

PROVIDENCE
 115.6 PVD
 Chan 103

HARTFORD
 114.9 HFD
 Chan 96
 N41°38.47'-W72°32.85'

L-33-34,
 H-10-12

WIPOR
 N41°39.38'
 W72°10.63'

MOGUL
 N41°43.38'
 W72°00.55'

NORWICH
 110.0 ORW
 Chan 37
 N41°33.38'-W71°59.96'
 L-33-34, H-10-12

NOTE: RADAR required.
 NOTE: STAR applicable to aircraft requesting 11000 and above.
 NOTE: ATC may assign STAR to aircraft at and below 10000.

NOTE: Chart not to scale.

ARRIVAL ROUTE DESCRIPTION

HARTFORD TRANSITION (HFD.GRAYM6): From over HFD VOR/DME on HFD R-053 to GRAYM. Thence. . .

NORWICH TRANSITION (ORW.GRAYM6): From over ORW VOR/DME on ORW R-011 to GRAYM. Thence. . .

. . . From over GRAYM on HFD R-053 to GASSE, then to DREEM, at DREEM:

RNAV EQUIPPED AIRCRAFT: Proceed direct destination expect radar vectors to approach course.

NON-RNAV EQUIPPED AIRCRAFT: Expect radar vectors to approach course.

GRAYM SIX ARRIVAL
 (GRAYM.GRAYM6) 08NOV18

BEDFORD, MASSACHUSETTS

NE-1, 15 AUG 2019 to 12 SEP 2019

NE-1, 15 AUG 2019 to 12 SEP 2019

ZELKA ZELKA2) 07DEC17

ZELKA TWO ARRIVAL (RNAV)

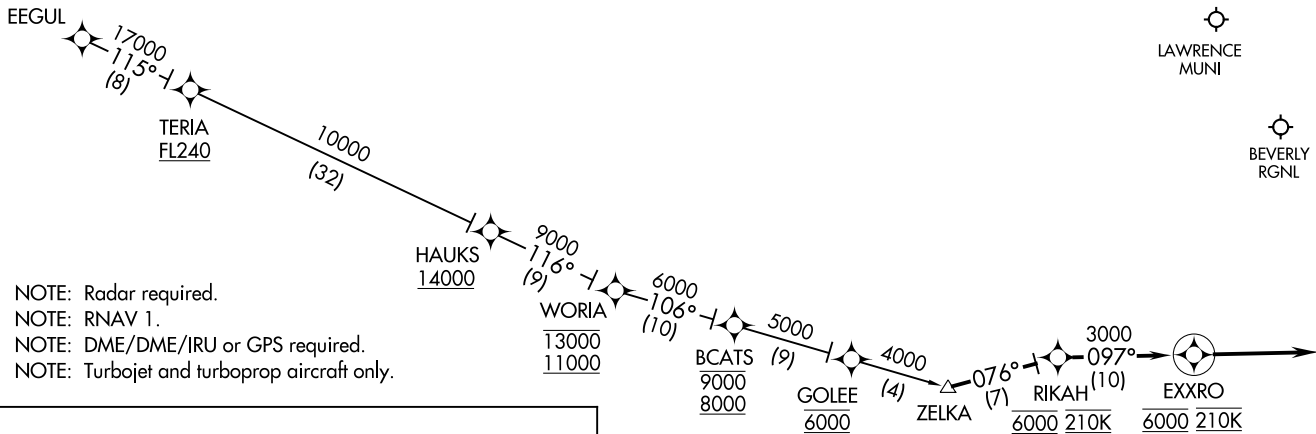
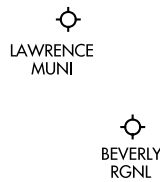
ZELKA TWO ARRIVAL (RNAV)

(ZELKA ZELKA2) 17341

AL-626 (FAA)

BEDFORD, MASSACHUSETTS

BOSTON APP CON
124.4 279.6
LAURENCE G HANSCOM FIELD ATIS
124.6
BEVERLY RGNL ATIS
119.2
LAURENCE MUNI ATIS
126.75



NOTE: Radar required.
NOTE: RNAV 1.
NOTE: DME/DME/IRU or GPS required.
NOTE: Turbojet and turboprop aircraft only.

ARRIVAL ROUTE DESCRIPTION

EEGUL TRANSITION (EEGUL.ZELKA2):

From ZELKA on track 076° to cross RIKAH at 6000 and 210K, then on track 097° to cross EXXRO at 6000 and at 210K, then on track 097°. Expect radar vectors to destination airport and final approach course.



NOTE: Chart not to scale.

BEDFORD, MASSACHUSETTS