



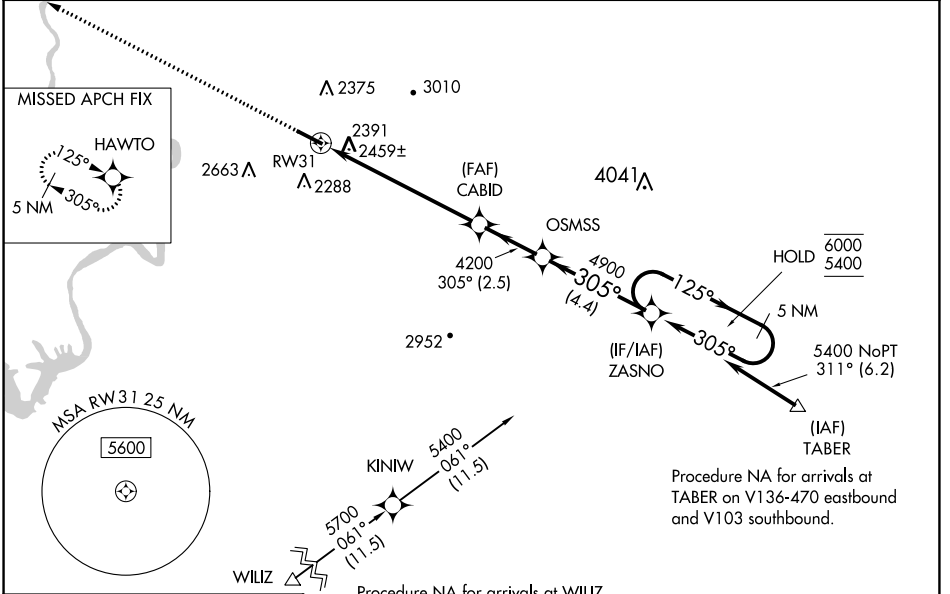


WAAS CH <b>86743</b> <b>W31A</b>	APP CRS <b>305°</b>	Rwy Idg TDZE Apt Elev	<b>5501</b> <b>2120</b> <b>2120</b>
--	------------------------	-----------------------------	---

**RNAV (GPS) RWY 31**  
VIRGINIA TECH/MONTGOMERY EXEC (BCB)

RNP APCH.	MISSED APPROACH: Climb to 5900 direct HAWTO and hold, continue climb-in-hold to 5900.
<p>▼ Rwy 31 helicopter visibility reduction below ¾ SM NA.</p> <p>▲ For uncompensated Baro-VNAV systems, LNAV/VNAV NA below -19°C or above 54°C.</p>	

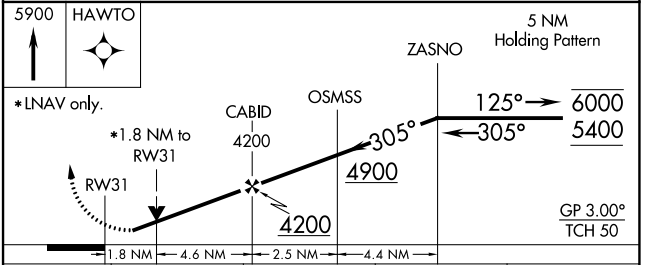
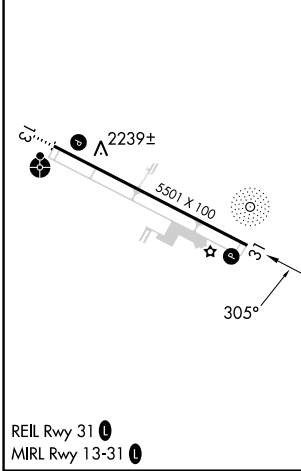
AWOS-3 <b>133.325</b>	ROANOKE APP CON <b>126.9 339.8</b>	CLNC DEL <b>124.85</b>	UNICOM <b>123.05 (CTAF)</b>
--------------------------	---------------------------------------	---------------------------	--------------------------------



ELEV 2120	TDZE 2120
-----------	-----------

Procedure NA for arrivals at TABER on V136-470 eastbound and V103 southbound.

Procedure NA for arrivals at WILIZ on V45 southeast bound.



CATEGORY	A	B	C	D
LPV DA	2412-7/8	292 (300-7/8)		NA
LNAV/VNAV DA	2740-1 3/4	620 (700-1 3/4)		NA
LNAV MDA	2740-1	620 (700-1)	2740-1 3/4 620 (700-1 3/4)	NA
CIRCLING	2760-1 640 (700-1)	2820-1 700 (700-1)	2980-2 1/2 860 (900-2 1/2)	NA

NE-3, 22 FEB 2024 to 21 MAR 2024

NE-3, 22 FEB 2024 to 21 MAR 2024