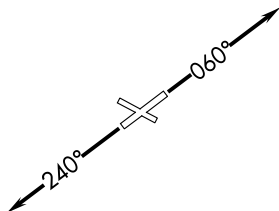


**TOP ALTITUDE:
ASSIGNED BY ATC**

ATIS
134.55
CLNC DEL
121.6
GND CON
121.6
ANN ARBOR TOWER★
120.3 (CTAF)
DETROIT DEP CON
118.95 284.0



TAKEOFF MINIMUMS:

Rwys 6, 24: Standard.
Rwys 12, 30: NA-Environmental.

NOTE: RNAV 1.
NOTE: RADAR required.
NOTE: DME/DME/IRU or GPS required.
NOTE: Turbojet departures at/above 10000,
maintain 280K until advised by ATC.

HUUTZ
4000

BARII

10000
212°
(29)

SINKR

213°
(55)

NOTE: Chart not to scale.

DEPARTURE ROUTE DESCRIPTION

TAKEOFF RUNWAY 6: Climb on heading 060° or as assigned for RADAR vectors to cross HUUTZ at or above 4000, thence....

TAKEOFF RUNWAY 24: Climb on heading 240° or as assigned for RADAR vectors to cross HUUTZ at or above 4000, thence....

....on track 213° to BARII, then on (transition). Maintain ATC assigned altitude, expect filed altitude 10 minutes after departure.

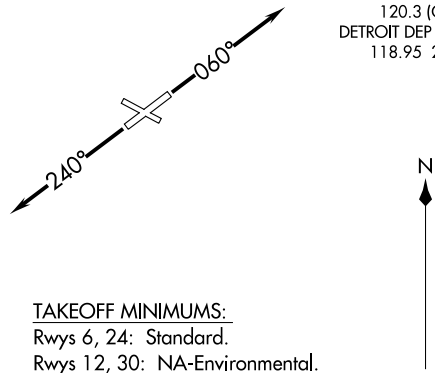
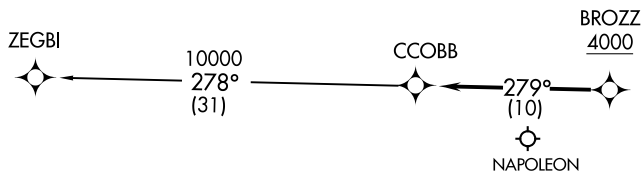
SINKR TRANSITION (BARI2.SINKR):

CCOBB TWO DEPARTURE (RNAV)
 (CCOBB2.CCOBB) 15AUG19

**TOP ALTITUDE:
 ASSIGNED BY ATC**

- NOTE: RNAV 1.
- NOTE: RADAR required.
- NOTE: DME/DME/IRU or GPS required.
- NOTE: Turbojet departures at/above 10000, maintain 280K until advised by ATC.
- NOTE: For use by aircraft filed at or below FL220, or as assigned by ATC.
- NOTE: CAUTION: Parachute jumping 6 NM SW of BROZZ, 3 NM radius of Napoleon Airport (3NP) at or below 17999 (SR-SS).

ATIS 134.55
 CLNC DEL 121.6
 GND CON 121.6
 ANN ARBOR TOWER ★ 120.3 (CTAF)
 DETROIT DEP CON 118.95 284.0



TAKEOFF MINIMUMS:
 Rwys 6, 24: Standard.
 Rwys 12, 30: NA-Environmental.

NOTE: Chart not to scale.

DEPARTURE ROUTE DESCRIPTION

TAKEOFF RUNWAY 6: Climb on heading 060° or as assigned for RADAR vectors to cross BROZZ at or above 4000, thence....
TAKEOFF RUNWAY 24: Climb on heading 240° or as assigned for RADAR vectors to cross BROZZ at or above 4000, thence....

....on track 279° to CCOBB, then on (transition). Maintain ATC assigned altitude, expect filed altitude 10 minutes after departure.

ZEGBI TRANSITION (CCOBB2.ZEGBI):

ANN ARBOR, MICHIGAN
 ANN ARBOR MUNI (ARB)

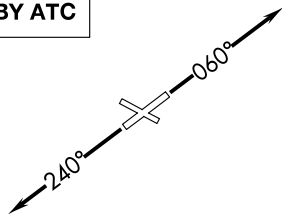
(CCOBB2.CCOBB) 20142
 CCOBB TWO DEPARTURE (RNAV)

AL-5506 (FAA)

ANN ARBOR MUNI (ARB)
 ANN ARBOR, MICHIGAN

**TOP ALTITUDE:
ASSIGNED BY ATC**

ATIS
134.55
CLNC DEL
121.6
GND CON
121.6
ANN ARBOR TOWER ★
120.3 (CTAF)
DETROIT DEP CON
118.95 284.0



PHAUL
4000

206°
(20)

CLVIN

10000
206°
(35)

TFTUN

10000
206°
(35)

RINTE

10000
190°
(10)

PUUDL

10000
190°
(17)

STAZE

TAKEOFF MINIMUMS:

Rwys 6, 24: Standard.

Rwys 12, 30: NA-Environmental.

NOTE: RNAV 1.

NOTE: RADAR required.

NOTE: DME/DME/IRU or GPS required.

NOTE: Turbojet departures at/above 10000,
maintain 280K until advised by ATC.

NOTE: Chart not to scale.

DEPARTURE ROUTE DESCRIPTION

TAKEOFF RUNWAY 6: Climb on heading 060° or as assigned for RADAR vectors to cross PHAUL at or above 4000, then....

TAKEOFF RUNWAY 24: Climb on heading 240° or as assigned for RADAR vectors to cross PHAUL at or above 4000, then....

...on track 206° to CLVIN, then on (transition). Maintain ATC assigned altitude, expect filed altitude 10 minutes after departure.

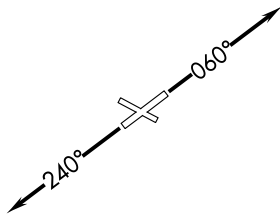
STAZE TRANSITION (CLVIN2.STAZE):

EC-1, 22 FEB 2024 to 21 MAR 2024

EC-1, 22 FEB 2024 to 21 MAR 2024

HHOWE THREE DEPARTURE (RNAV)
(HHOWE3.HHOWE) 05DEC19

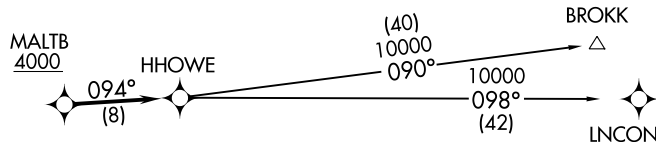
ATIS
134.55
CLNC DEL
121.6
GND CON
121.6
ANN ARBOR TOWER ★
120.3 (CTAF)
DETROIT DEP CON
118.95 284.0



TAKEOFF MINIMUMS:

Rwys 6, 24: Standard.
Rwys 12, 30: NA - Environmental.

**TOP ALTITUDE:
ASSIGNED BY ATC**



NOTE: RNAV 1.
NOTE: RADAR required.
NOTE: DME/DME/IRU or GPS required.
NOTE: Turbojet departures at/above 10000,
maintain 280K until advised by ATC.
NOTE: BROKK TRANSITION: For use by flights filed at or below
FL270, or as assigned by ATC.

NOTE: Chart not to scale.

DEPARTURE ROUTE DESCRIPTION

TAKEOFF RUNWAY 6: Climb on heading 060° or as assigned for RADAR vectors to cross MALTB at or above 4000, thence....
TAKEOFF RUNWAY 24: Climb on heading 240° or as assigned for RADAR vectors to cross MALTB at or above 4000, thence....

...on track 094° to HHOWE, then on (transition). Maintain ATC assigned altitude, expect filed altitude 10 minutes after departure.

BROKK TRANSITION (HHOWE3.BROKK)
LNCON TRANSITION (HHOWE3.LNCON)

ANN ARBOR, MICHIGAN
ANN ARBOR MUNI (ARB)
(ARB)

(HHOWE3.HHOWE) 19339
HHOWE THREE DEPARTURE (RNAV)
AL-5506 (FAA)

ANN ARBOR MUNI (ARB)
ANN ARBOR, MICHIGAN

KAYLN TWO DEPARTURE (RNAV)
 (KAYLN2.KAYLN) 15AUG19

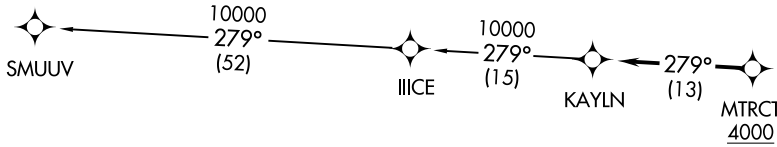
**TOP ALTITUDE:
ASSIGNED AT ATC**

TAKEOFF MINIMUMS:

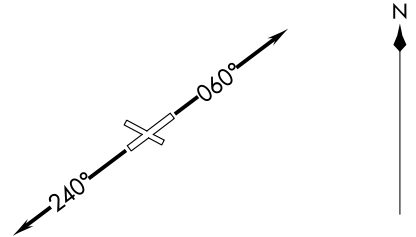
Rwys 6, 24: Standard.

Rwys 12, 30: NA-Environmental.

ATIS 134.55
 CLNC DEL 121.6
 GND CON 121.6
 ANN ARBOR TOWER ★ 120.3 (CTAF)
 DETROIT DEP CON 118.95 284.0



- NOTE: RNAV 1.
- NOTE: RADAR required.
- NOTE: DME/DME/IRU or GPS required.
- NOTE: Turbojet departures at/above 10000, maintain 280K until advised by ATC.



NOTE: Chart not to scale.

DEPARTURE ROUTE DESCRIPTION

TAKEOFF RUNWAY 6: Climb on heading 060° or as assigned for RADAR vectors to cross MTRCT at or above 4000, thence....
TAKEOFF RUNWAY 24: Climb on heading 240° or as assigned for RADAR vectors to cross MTRCT at or above 4000, thence....

....on track 279° to KAYLN, then on (transition). Maintain ATC assigned altitude, expect filed altitude 10 minutes after departure.

SMUUV TRANSITION (KAYLN2.SMUUV):

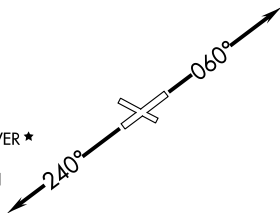
ANN ARBOR, MICHIGAN
 ANN ARBOR MUNI (ARB)

(KAYLN2.KAYLN) 19227
 KAYLN TWO DEPARTURE (RNAV)
 AL-5506 (FAA)

ANN ARBOR MUNI (ARB)
 ANN ARBOR, MICHIGAN

KZLOV ONE DEPARTURE (RNAV)
(KZLOV1, WINNZ) 14JUL22

ATIS
134.55
CLNC DEL
121.6
GND CON
121.6
ANN ARBOR TOWER ★
120.3 (CTAF)
DETROIT DEP CON
118.95 284.0



RNAV 1 - DME/DME/IRU or GPS.

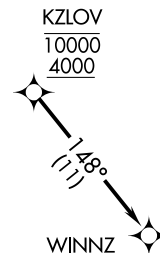
RADAR required.

**TOP ALTITUDE:
ASSIGNED BY ATC**

NOTE: Turbojet departures at/above 10000,
maintain 280K until advised by ATC.
NOTE: For use by Cleveland terminal arrivals only.

TAKEOFF MINIMUMS:

Rwy 12, 30: NA - Environmental.
Rwy 6, 24: Standard with minimum climb
of 500' per NM to 1339.



NOTE: Chart not to scale.

DEPARTURE ROUTE DESCRIPTION

TAKEOFF RUNWAY 6: Climb on heading 060° or as assigned for RADAR vectors to cross KZLOV at or above 4000 and at or below 10000, thence....

TAKEOFF RUNWAY 24: Climb on heading 240° or as assigned for RADAR vectors to cross KZLOV at or above 4000 and at or below 10000, thence....

....on track 148° to WINNZ. Maintain assigned altitude, expect filed altitude ten minutes after departure.

ANN ARBOR, MICHIGAN
ANN ARBOR MUNI (ARB)

(KZLOV1, WINNZ) 22195
KZLOV ONE DEPARTURE (RNAV)

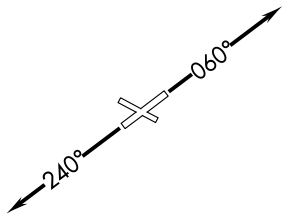
AL-5506 (FAA)

ANN ARBOR MUNI (ARB)
ANN ARBOR, MICHIGAN

LIDDS TWO DEPARTURE (RNV)
(LIDDS2.LIDDS) 15AUG19

LIDDS TWO DEPARTURE (RNV)

TOP ALTITUDE:
ASSIGNED BY ATC



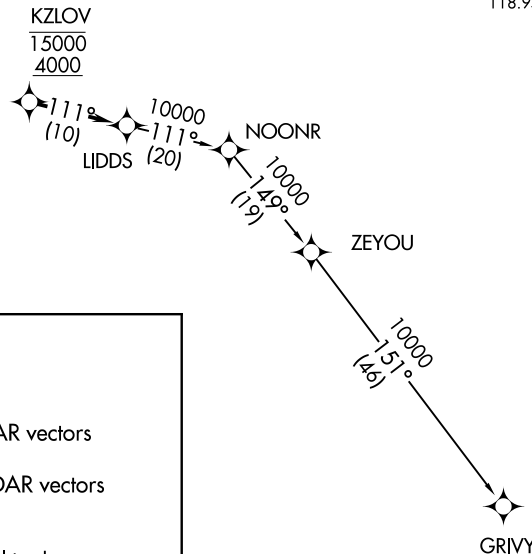
TAKEOFF MINIMUMS:

Rwys 6, 24: Standard.

Rwys 12, 30: NA-Environmental.

ATIS
134.55
CLNC DEL
121.6
GND CON
121.6
ANN ARBOR TOWER ★
120.3 (CTAF)
DETROIT DEP CON
118.95 284.0

NOTE: RNAV 1.
NOTE: RADAR required.
NOTE: DME/DME/IRU or GPS required.
NOTE: Turbojet departures at/above 10000,
maintain 280K until advised by ATC.



DEPARTURE ROUTE DESCRIPTION

TAKEOFF RUNWAY 6: Climb on heading 060° or as assigned for RADAR vectors to cross KZLOV between 4000 and 15000, thence....

TAKEOFF RUNWAY 24: Climb on heading 240° or as assigned for RADAR vectors to cross KZLOV between 4000 and 15000, thence....

....on track 111° to LIDDS, then on (transition). Maintain ATC assigned altitude, expect filed altitude 10 minutes after departure.

GRIVY TRANSITION (LIDDS2.GRIVY):

NOTE: Chart not to scale.

ANN ARBOR, MICHIGAN
ANN ARBOR MUNI (ARB)

(LIDDS2.LIDDS) 19227
LIDDS TWO DEPARTURE (RNV)

AL-5506 (FAA)

ANN ARBOR MUNI (ARB)
ANN ARBOR, MICHIGAN

**TOP ALTITUDE:
3000**

TAKEOFF MINIMUMS

Rwys 12, 30: NA - Environmental.

Rwys 6, 24: Standard.

ATIS 134.55
CLNC DEL 121.6
GND CON 121.6
ANN ARBOR TOWER ★
120.3 (CTAF)
DETROIT DEP CON
118.95 284.0

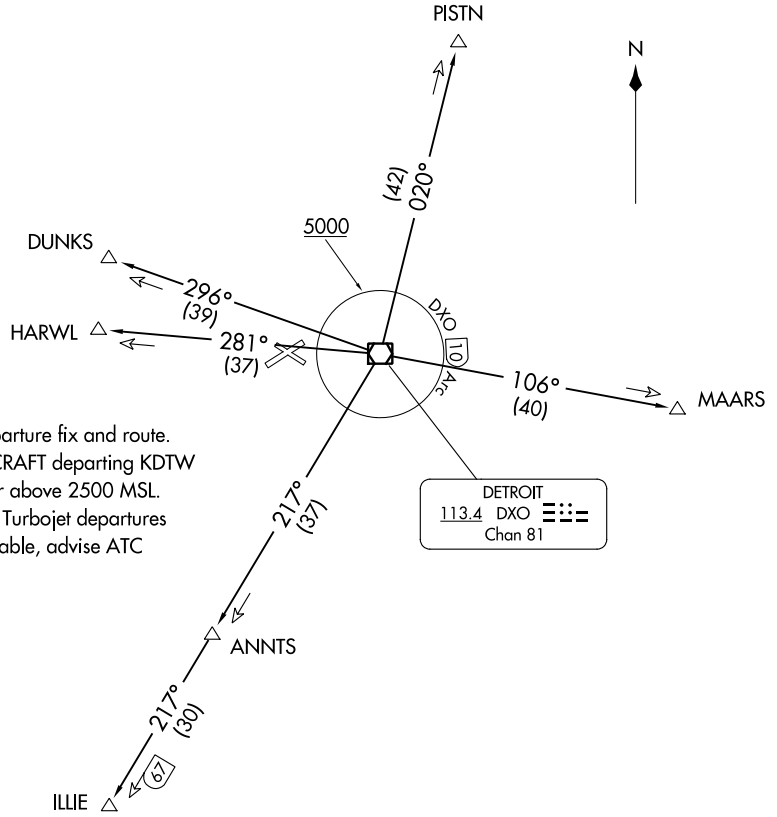
NOTE: RADAR required.
NOTE: DME required.
NOTE: For use by non-RNAV equipped aircraft only.

SPECIAL INSTRUCTIONS:

When using this departure, file the appropriate depicted departure fix and route.
Aircraft over HARWL must file FL220 and below. PROP AIRCRAFT departing KDTW Rwy 21L/R and 22L/R westbound, cross DXO 3.5 DME at or above 2500 MSL.
Aircraft landing Cleveland (CLE) must file MAARS transition. Turbojet departures at/above 10000, maintain 280K until advised by ATC. If unable, advise ATC prior to departure.

(NARRATIVE ON FOLLOWING PAGE)

NOTE: Chart not to scale.



METRO THREE DEPARTURE
(METRO3.DXO) 05NOV20

ANN ARBOR, MICHIGAN
ANN ARBOR MUNI (ARB)

(METRO3.DXO) 23334
METRO THREE DEPARTURE

AL-5506 (FAA)

ANN ARBOR MUNI (ARB)
ANN ARBOR, MICHIGAN



DEPARTURE ROUTE DESCRIPTION

TAKEOFF RUNWAYS 6/24: Climb on assigned heading, thence ...

..... maintain ATC assigned altitude for RADAR vectors to intercept filed/assigned transition or enroute fix/navaid. When ATC assigned altitude is at or above 5000, cross DXO 10 DME Arc at or above 5000 for noise abatement. If unable to comply, advise ATC prior to departure. Expect clearance to filed altitude/flight level within ten (10) minutes after departure.

DUNKS TRANSITION (METRO3.DUNKS): From over DXO VOR/DME on DXO R-296 to DUNKS.

HARWL TRANSITION (METRO3.HARWL): From over DXO VOR/DME on DXO R-281 to HARWL.

ILLIE TRANSITION (METRO3.ILLIE): From over DXO VOR/DME on DXO R-217 to ILLIE.

MAARS TRANSITION (METRO3.MAARS): From over DXO VOR/DME on DXO R-106 to MAARS.

PISTN TRANSITION (METRO3.PISTN): From over DXO VOR/DME on DXO R-020 to PISTN.

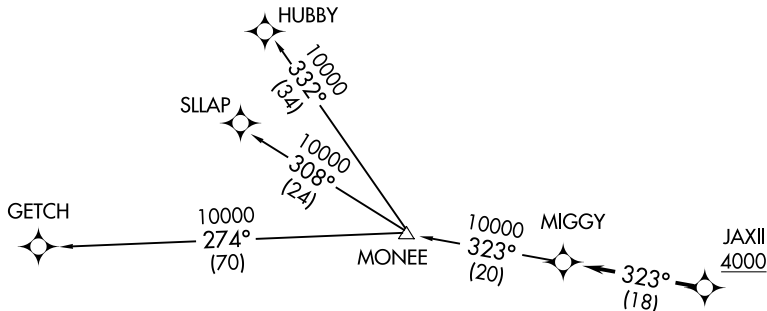
EC-1, 22 FEB 2024 to 21 MAR 2024

EC-1, 22 FEB 2024 to 21 MAR 2024

MIGGY TWO DEPARTURE (RNAV)
 (MIGGY2.MIGGY) 15AUG19

ANN ARBOR, MICHIGAN
 ANN ARBOR MUNI (ARB)

**TOP ALTITUDE:
 ASSIGNED BY ATC**



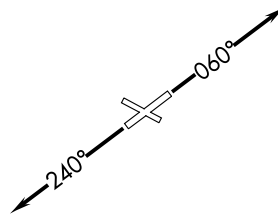
- NOTE: RNAV 1.
- NOTE: RADAR required.
- NOTE: DME/DME/IRU or GPS required.
- NOTE: Turbojet departures at/above 10000, maintain 280K until advised by ATC.
- NOTE: GETCH TRANSITION: For use by KMKE area arrivals only, or as assigned by ATC.

DEPARTURE ROUTE DESCRIPTION

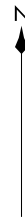
TAKEOFF RUNWAY 6: Climb on heading 060° or as assigned for RADAR vectors to cross JAXII at or above 4000, thence....
TAKEOFF RUNWAY 24: Climb on heading 240° or as assigned for RADAR vectors to cross JAXII at or above 4000, thence....

....on track 323° to MIGGY, then on (transition). Maintain ATC assigned altitude, expect filed altitude 10 minutes after departure.

- GETCH TRANSITION (MIGGY2.GETCH):
- HUBBY TRANSITION (MIGGY2.HUBBY):
- SLLAP TRANSITION (MIGGY2.SLLAP):



TAKEOFF MINIMUMS:
 Rwy 6, 24: Standard.
 Rwy 12, 30: NA-Environmental.



NOTE: Chart not to scale.

ATIS 134.55
 CLNC DEL 121.6
 GND CON 121.6
 ANN ARBOR TOWER ★ 120.3 (CTAF)
 DETROIT DEP CON 118.95 284.0

(MIGGY2.MIGGY) 19227
MIGGY TWO DEPARTURE (RNAV)

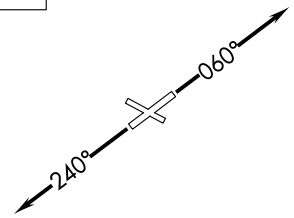
AL-5506 (FAA)

ANN ARBOR MUNI (ARB)
 ANN ARBOR, MICHIGAN

PAVYL TWO DEPARTURE (RNAV)
(PAVYL2.PAVYL) 15AUG19

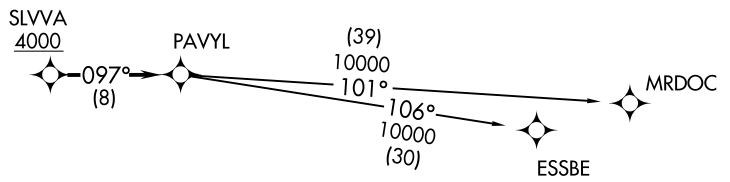
(PAVYL2.PAVYL) 192ZZ
PAVYL TWO DEPARTURE (RNAV)

**TOP ALTITUDE:
ASSIGNED BY ATC**



NOTE: RNAV 1.
NOTE: RADAR required.
NOTE: DME/DME/IRU or GPS required.
NOTE: Turbojet departures at/above 10000,
maintain 280K until advised by ATC.

ATIS 134.55
CLNC DEL 121.6
GND CON 121.6
ANN ARBOR TOWER * 121.6
120.3 (CTAF)
DETROIT DEP CON 118.95 284.0



TAKEOFF MINIMUMS:
Rwys 6, 24: Standard.
Rwys 12, 30: NA-Environmental.

NOTE: Chart not to scale.

DEPARTURE ROUTE DESCRIPTION

TAKEOFF RUNWAY 6: Climb on heading 060° or as assigned for RADAR vectors to cross SLVVA at or above 4000, thence....
TAKEOFF RUNWAY 24: Climb on heading 240° or as assigned for RADAR vectors to cross SLVVA at or above 4000, thence....
...on track 097° to PAVYL, then on (transition). Maintain ATC assigned altitude, expect filed altitude 10 minutes after departure.

ESSBE TRANSITION (PAVYL2.ESSBE):
MRDOC TRANSITION (PAVYL2.MRDOC):

ANN ARBOR, MICHIGAN
ANN ARBOR MUNI (ARB)

ANN ARBOR MUNI (ARB)
ANN ARBOR, MICHIGAN

SNDRS TWO DEPARTURE (RNAV)
(SNDRS2.SNDRS) 15AUG19

DEPARTURE ROUTE DESCRIPTION

TAKEOFF RUNWAY 6: Climb on heading 060° or as assigned for RADAR vectors to cross JWELS at or above 4000, thence...
TAKEOFF RUNWAY 24: Climb on heading 240° or as assigned for RADAR vectors to cross JWELS at or above 4000, thence...

...on track 218° to SNDRS, then on (transition). Maintain ATC assigned altitude, expect filed altitude 10 minutes after departure.

BGHRT TRANSITION (SNDRS2.BGHRT):
TORRR TRANSITION (SNDRS2.TORRR):

TOP ALTITUDE: ASSIGNED BY ATC

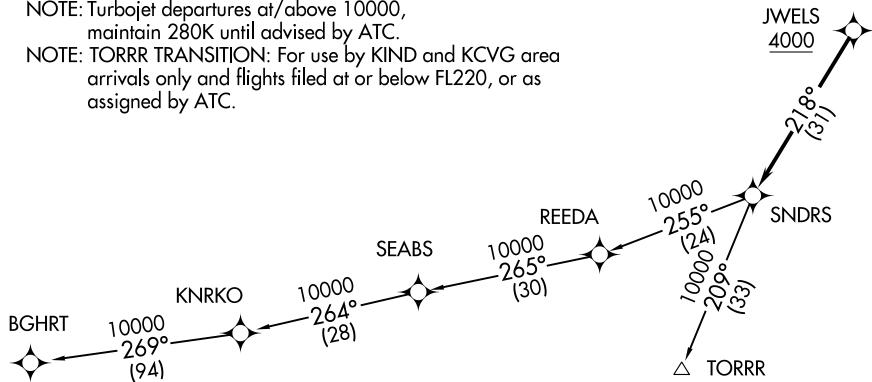
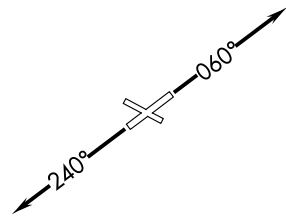
ATIS 134.55
CLNC DEL 121.6
GND CON 121.6
ANN ARBOR TOWER * 120.3 (CTAF)
DETROIT DEP CON 118.95 284.0

(SNDRS2.SNDRS) 1922Z
SNDRS TWO DEPARTURE (RNAV)

AL-5506 (FAA)

ANN ARBOR MUNI (ARB)
ANN ARBOR, MICHIGAN

- NOTE: RNAV 1.
- NOTE: RADAR required.
- NOTE: DME/DME/IRU or GPS required.
- NOTE: Turbojet departures at/above 10000, maintain 280K until advised by ATC.
- NOTE: TORRR TRANSITION: For use by KIND and KCVG area arrivals only and flights filed at or below FL220, or as assigned by ATC.

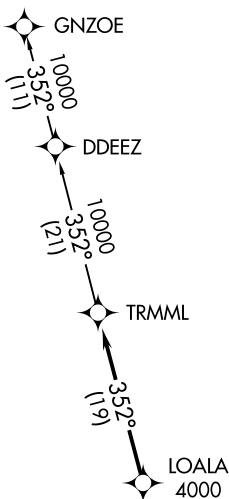


TAKEOFF MINIMUMS:
Rwys 6, 24: Standard.
Rwys 12, 30: NA-Environmental.

NOTE: Chart not to scale.

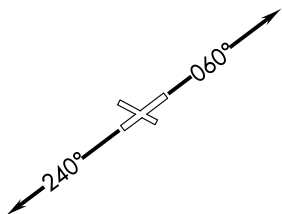
ANN ARBOR, MICHIGAN
ANN ARBOR MUNI (ARB)

**TOP ALTITUDE:
ASSIGNED BY ATC**



ATIS
 134.55
 CLNC DEL
 121.6
 GND CON
 121.6
 ANN ARBOR TOWER ★
 120.3 (CTAF)
 DETROIT DEP CON
 118.95 284.0

TAKEOFF MINIMUMS:
 Rwy 6, 24: Standard.
 Rwy 12, 30: NA-Environmental.



NOTE: RNAV 1.
 NOTE: RADAR required.
 NOTE: DME/DME/IRU or GPS required.
 NOTE: Turbojet departures at/above 10000,
 maintain 280K until advised by ATC.

NOTE: Chart not to scale.



DEPARTURE ROUTE DESCRIPTION

TAKEOFF RUNWAY 6: Climb on heading 060° or as assigned for RADAR vectors to cross LOALA at or above 4000, thence...

TAKEOFF RUNWAY 24: Climb on heading 240° or as assigned for RADAR vectors to cross LOALA at or above 4000, thence...

...on track 352° to TRMML, then on (transition). Maintain ATC assigned altitude, expect filed altitude 10 minutes after departure.

GNZOE TRANSITION (TRMML3.GNZOE):

(ZETTR3.ZETTR) 19339

ZETTR THREE DEPARTURE (RNAV)

AL-5506 (FAA)

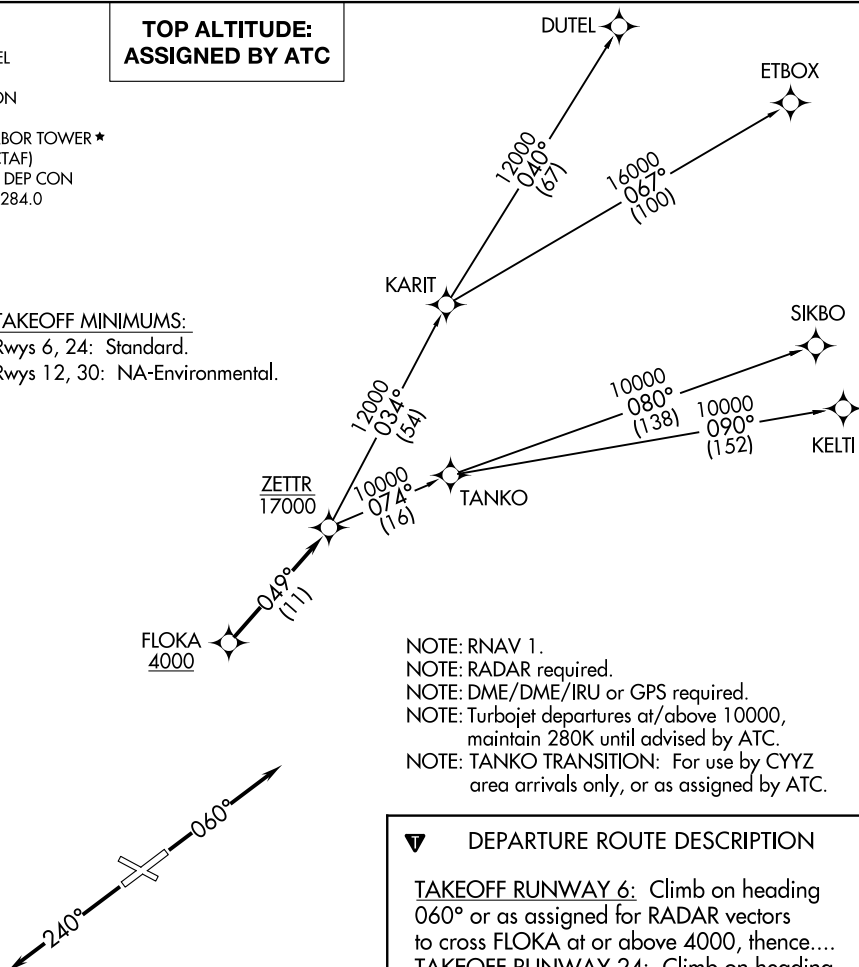
ANN ARBOR MUNI (ARB)

ANN ARBOR, MICHIGAN

ATIS
 134.55
 CLNC DEL
 121.6
 GND CON
 121.6
 ANN ARBOR TOWER ★
 120.3 (CTAF)
 DETROIT DEP CON
 118.95 284.0

**TOP ALTITUDE:
ASSIGNED BY ATC**

TAKEOFF MINIMUMS:
 Rwy 6, 24: Standard.
 Rwy 12, 30: NA-Environmental.



- NOTE: RNAV 1.
- NOTE: RADAR required.
- NOTE: DME/DME/IRU or GPS required.
- NOTE: Turbojet departures at/above 10000, maintain 280K until advised by ATC.
- NOTE: TANKO TRANSITION: For use by CYYZ area arrivals only, or as assigned by ATC.

▼ DEPARTURE ROUTE DESCRIPTION

TAKEOFF RUNWAY 6: Climb on heading 060° or as assigned for RADAR vectors to cross FLOKA at or above 4000, thence....
TAKEOFF RUNWAY 24: Climb on heading 240° or as assigned for RADAR vectors to cross FLOKA at or above 4000, thence....

....on track 049° to cross ZETTR at or below 17000, then on (transition). Maintain ATC assigned altitude, expect filed altitude 10 minutes after departure.

- DUTEL TRANSITION (ZETTR3.DUTEL):**
- ETBOX TRANSITION (ZETTR3.ETBOX):**
- KELTI TRANSITION (ZETTR3.KELTI):**
- SIKBO TRANSITION (ZETTR3.SIKBO):**
- TANKO TRANSITION (ZETTR3.TANKO):**

NOTE: Chart not to scale.

EC-1, 22 FEB 2024 to 21 MAR 2024

EC-1, 22 FEB 2024 to 21 MAR 2024

ZETTR THREE DEPARTURE (RNAV)
 (ZETTR3.ZETTR) 05DEC19

ANN ARBOR, MICHIGAN
 ANN ARBOR MUNI (ARB)