

ABERDEEN, MARYLAND

RNAV (GPS) RWY 22

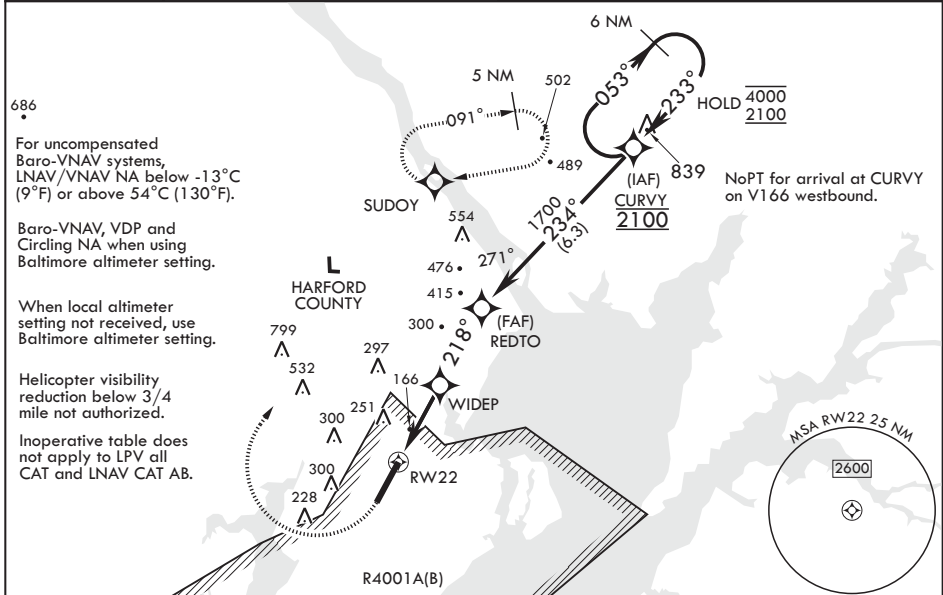
WAAS CH 70342 W22A	APCH CRS 218°	Rwy ldg TDZE 7998 45	Arpt Elev 45
--------------------------	------------------	----------------------------	-----------------

AL-555 (USA)

PHILLIPS AAF (ABERDEEN PROVING GROUND) (KAPG)

RNP APCH-GPS ⚠ ** Circling NA SE of RWY 4-22.	MISSED APPROACH: Climb to 500, then climbing right turn to 2000 direct SUDOY and hold.
--	--

ATIS ★ 124.425	POTOMAC APP CON/DEP CON 125.525 291.625	TOWER ★ 126.15 (CTAF) 229.6	GND CON 121.9
-------------------	--	--------------------------------	------------------



For uncompensated Baro-VNAV systems, LNAV/VNAV NA below -13°C (9°F) or above 54°C (130°F).

Baro-VNAV, VDP and Circling NA when using Baltimore altimeter setting.

When local altimeter setting not received, use Baltimore altimeter setting.

Helicopter visibility reduction below 3/4 mile not authorized.

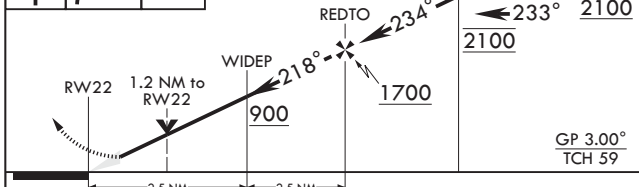
Inoperative table does not apply to LPV all CAT and LNAV CAT AB.

NoPT for arrival at CURVY on V166 westbound.

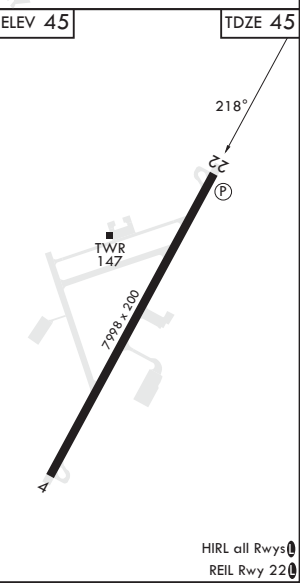
NE-3, 22 FEB 2024 to 21 MAR 2024

NE-3, 22 FEB 2024 to 21 MAR 2024

500	2000	SUDOY	VGSI and RNAV glidepath not coincident (VGSI Angle 3.00/TCH 49).	6 NM Holding Pattern	ELEV 45	TDZE 45
-----	------	-------	--	----------------------	---------	---------



CATEGORY	A	B	C	D
LPV DA	295-1	250	(300-1)	
LNAV/VNAV DA	560-1 3/8	515	(600-1 3/8)	
LNAV MDA	560-1 515	(600-1)	560-1 3/8 515	(600-1 3/8)
C CIRCLING**	560-1 515 (600-1)	640-1 595 (600-1)	680-1 3/4 635 (700-1 3/4)	880-2 3/4 835 (900-2 3/4)
BALTIMORE WASHINGTON INTL ALTIMETER SETTING MINIMUMS				
LPV DA	376-1 1/4	281	(300-1 1/4)	
LNAV/VNAV DA	657-1 3/4	612	(600-1 3/4)	
LNAV MDA	660-1 1/4 515	(700-1 1/4)	660-1 3/4 515	(700-1 3/4)
C CIRCLING**	660-1 615 (700-1 1/4)	740-1 1/4 695 (700-1 1/4)	780-2 735 (800-2)	961-3 916 (1000-3)



ABERDEEN, MARYLAND
Amdt 3 15JUN23

39°28'N - 76°10'W PHILLIPS AAF (ABERDEEN PROVING GROUND) (KAPG)

RNAV (GPS) RWY 22

HIRL all Rwy's
REIL Rwy 22