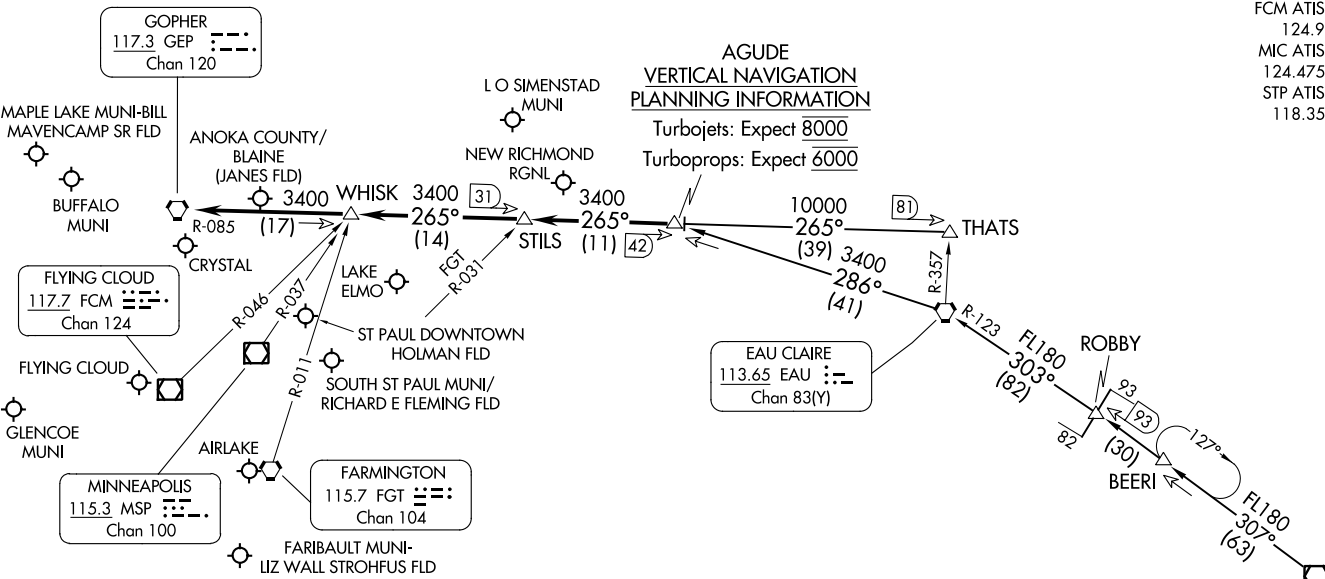


NOTE: Chart not to scale.

NOTE: DME and RADAR required.



- MINNEAPOLIS APP CON
 121.2 335.5
 ANE ATIS
 120.625
 FCM ATIS
 124.9
 MIC ATIS
 124.475
 STP ATIS
 118.35

AGUDE
 VERTICAL NAVIGATION
 PLANNING INFORMATION
 Turbojets: Expect 8000
 Turboprops: Expect 6000

ARRIVAL ROUTE DESCRIPTION

BADGER TRANSITION (BAE.AGUDE5): From over BAE VOR/DME on BAE R-307 to ROBBY INT then on EAU R-123 to EAU VORTAC, then on EAU R-286 to AGUDE/EAU 41 DME. Thence. . . .

THATS TRANSITION (THATS.AGUDE5): From over THATS INT on GEP R-085 to AGUDE/GEP 42 DME. Thence. . . .

. . . . From over AGUDE/GEP 42 DME via GEP R-085 to GEP VORTAC, then expect RADAR vectors to final approach course.



AGUDE FIVE ARRIVAL
(AGUDE:AGUDE5) 120CT17

(AGUDE:AGUDE5) 23334

MINNEAPOLIS-ST PAUL, MINNESOTA

AL-263 (FAA)

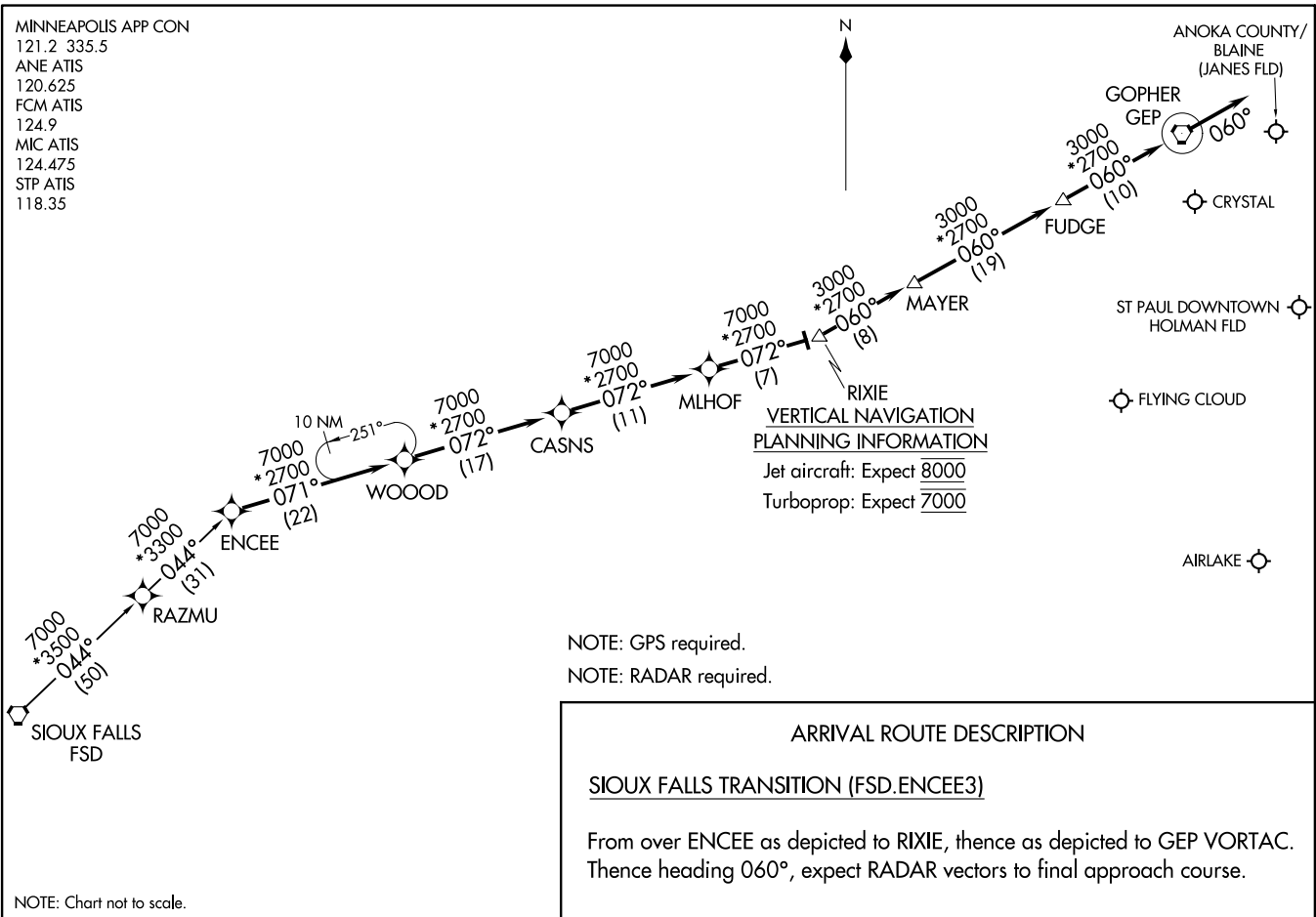
MINNEAPOLIS-ST PAUL, MINNESOTA

(ENCEE:ENCEE3) 10AUG23

ENCEE THREE ARRIVAL (RNAV)

MINNEAPOLIS APP CON
121.2 335.5
ANE ATIS
120.625
FCM ATIS
124.9
MIC ATIS
124.475
STP ATIS
118.35

MINNEAPOLIS-ST PAUL, MINNESOTA



VERTICAL NAVIGATION
PLANNING INFORMATION

Jet aircraft: Expect 8000
Turboprop: Expect 7000

NOTE: GPS required.
NOTE: RADAR required.

ARRIVAL ROUTE DESCRIPTION

SIoux FALLS TRANSITION (FSD.ENCEE3)

From over ENCEE as depicted to RIXIE, thence as depicted to GEP VORTAC.
Thence heading 060°, expect RADAR vectors to final approach course.

NOTE: Chart not to scale.

(ENCEE:ENCEE3) 23222

ENCEE THREE ARRIVAL (RNAV)

AL-263 (FAA)

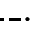
MINNEAPOLIS-ST PAUL, MINNESOTA

TWOLF FOUR ARRIVAL

AL-263 (FAA)

MINNEAPOLIS, MINNESOTA

MINNEAPOLIS APP CON
 126.95 335.5
 ANE ATIS
 120.625
 FCM ATIS
 124.9
 MIC ATIS
 124.475
 STP ATIS
 118.35

GOPHER
 117.3 GEP 
 Chan 120

ANOKA COUNTY/BLAINE
 (JANES FLD)

NEW RICHMOND
 RGNL

CRYSTAL

ST PAUL DOWNTOWN
 HOLMAN FLD

FLYING
 CLOUD

KEWTY
 5000

Ldg KSTP/KRNH/
 KFCM/KLVN/KOEO/
 KANE/KMIC

AIRLAKE

TRGET
 8000
 7000

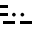
LYNKS

KGEEE

TWOLF

8 NM

MASON CITY
 114.9 MCW 
 Chan 96

WATERLOO
 112.2 ALO 
 Chan 59

ALOCK

NOTE: DME and RADAR required.

NOTE: Chart not to scale.

ARRIVAL ROUTE DESCRIPTION

ALOCK TRANSITION (ALOCK.TWOLF4): From over ALOCK on MCW R-182 to MCW VOR/DME, then on MCW R-318 to TWOLF.

LANDING ALL AIRPORTS: From over TWOLF on GOPHER (GEP) VORTAC R-178 to KGEEE, thence as depicted to cross TRGET between 7000 and 8000, then on GEP VORTAC R-178 to cross KEWTY at 5000, expect RADAR vectors to final approach course.

TWOLF FOUR ARRIVAL

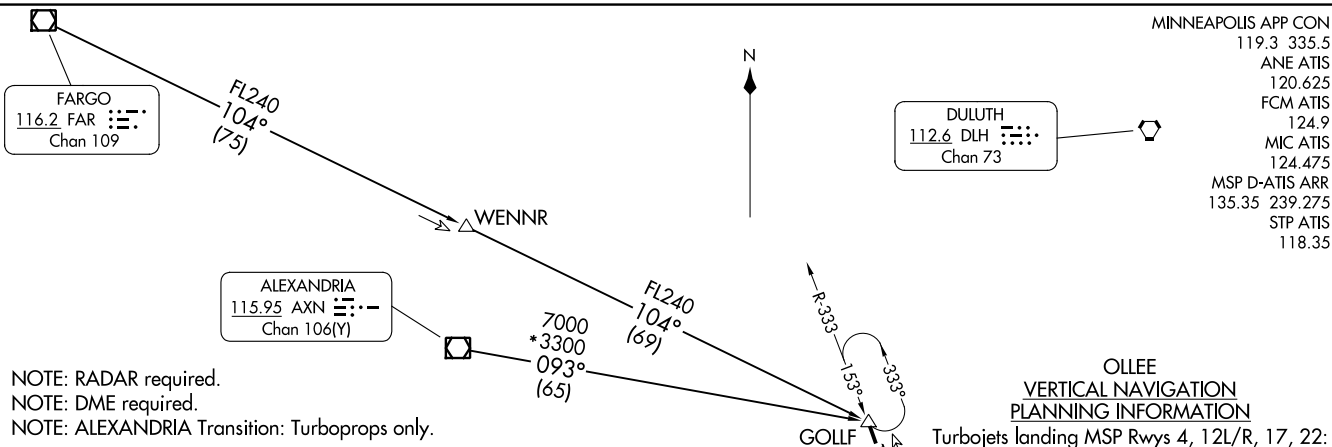
MINNEAPOLIS, MINNESOTA

NC-1, 22 FEB 2024 to 21 MAR 2024

NC-1, 22 FEB 2024 to 21 MAR 2024

GOPHER ONE ARRIVAL
(GEP.GEP1) 17AUG17

GOPHER ONE ARRIVAL
(GEP.GEP1) 23334



NOTE: RADAR required.
NOTE: DME required.
NOTE: ALEXANDRIA Transition: Turboprops only.

ARRIVAL ROUTE DESCRIPTION

ALEXANDRIA TRANSITION (AXN.GEP1): From over AXN VOR/DME on AXN R-093 to GOLLF. Thence . . .

FARGO TRANSITION (FAR.GEP1): From over FAR VOR/DME on FAR R-104 to GOLLF. Thence . . .

. . . from over GOLLF on GEP R-333 to GEP VORTAC, then on GEP R-153 to VYKES, thence . . .

LANDING MSP RUNWAYS 30L/R: Depart VYKES heading 120° for RADAR vectors to final approach course.

LANDING MSP RUNWAY 35: Depart VYKES heading 185° for RADAR vectors to final approach course.

LANDING ALL OTHER MSP RUNWAYS: Expect RADAR vectors to final approach course.

ALL OTHER AIRPORTS: Expect RADAR vectors to final approach course.

NOTE: Chart not to scale.

MINNEAPOLIS, MINNESOTA

AL-264 (FAA)

MINNEAPOLIS, MINNESOTA