

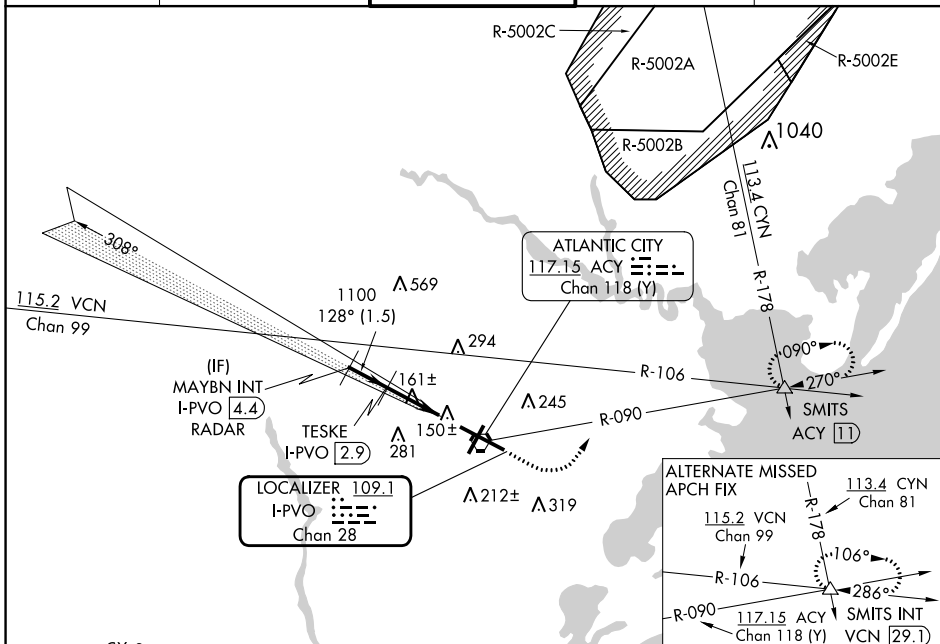
LOC/DME I-PVO 109.1 Chan 28	APP CRS 128°	Rwy ldg 10000 TDZE 75 Apt Elev 75
---	------------------------	--

COPTER ILS or LOC/DME RWY 13

ATLANTIC CITY INTL (ACY)

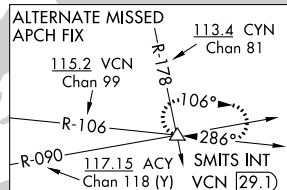
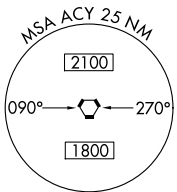
NA ASR	MALS 	MISSED APPROACH: Climb to 600 then climbing left turn to 2000 via ACY R-090 to SMITS INT/ACY 11 DME and hold.
-----------	----------	---

ATIS 125.725 316.15	ATLANTIC CITY APP CON 124.6 327.125	ATLANTIC CITY TOWER 120.3 239.0	GND CON 121.9 284.6	CLNC DEL 127.85 353.775
-------------------------------	---	---	-------------------------------	-----------------------------------



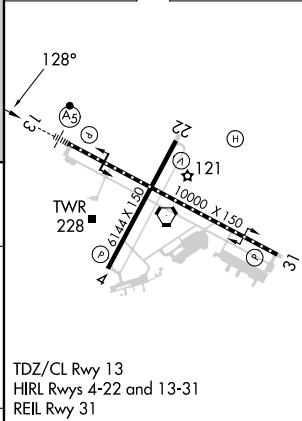
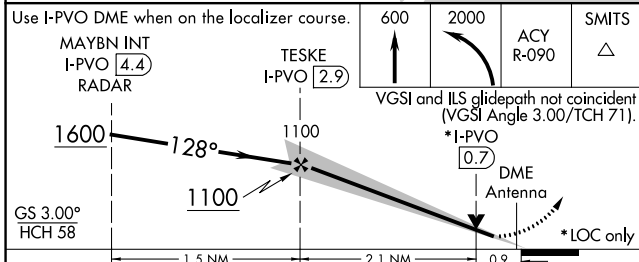
NE-2, 22 FEB 2024 to 21 MAR 2024

NE-2, 22 FEB 2024 to 21 MAR 2024



ELEV 75	TDZE 75
---------	---------

RADAR REQUIRED



CATEGORY	COPTER					FAF to MAP 3 NM					
H-ILS 13	275/12	200 (200-½)				Knots	45	60	75	90	105
H-LOC 13	420/24	345 (400-½)				Min:Sec	4:00	3:00	2:24	2:00	1:43

ATLANTIC CITY, NEW JERSEY

HILLS Y or LOC Y RWY 13

24025

[USAF] ATLANTIC CITY INTL (KACY)

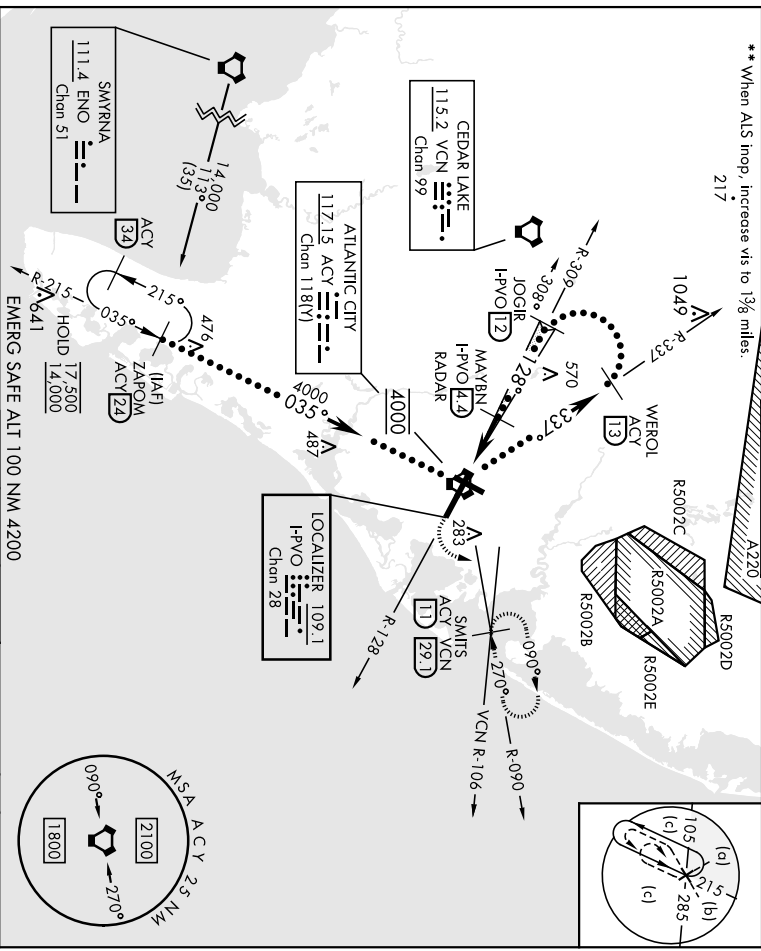
LOC/DME -FVNO 109.1 Chon 28	APCH CRS 128° Arpl Elev 75	Rwy Idg 10,000
DME or RADAR required	MAISR A5	

MISSED APPROACH: Climb to 600 then climbing left turn to 2000 on ACY R-090 to SMITS/ACY 11 DME and hold.

ATIS 125.725 316.15	APP CON 124.6 327.125 (130° - 309°) 134.25 292.2 (310° - 129°)	TOWER 120.3 239.0
-------------------------------	--	-----------------------------

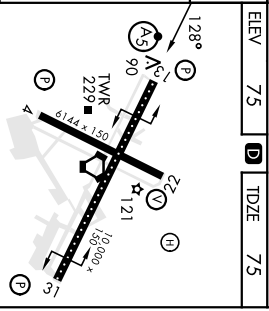
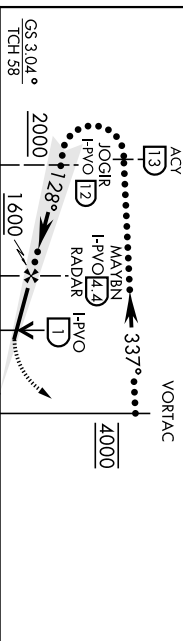
GND CON 121.9 284.6	CLNC DEL 127.85 353.775	ASR
-------------------------------	-----------------------------------	-----

** When ALS inop, increase vis to 1 3/8 miles.
217



Use I-PVO DME when on the LOC course.
VCSI and ILS glidepath not coincident
(VCSI Angle 3.00/TCH 71).
WEROL

600	2000	SMITS ACY
ACY	R-090	LD



CATEGORY	C	D	E
SLIS 13 *	275/18	200	1200-1/2
S-ILOC 13 **	520/45	445	1500-7/8
CIRCLING	620-1 1/2	640-2	760-2 1/2
	545 (600-1 1/2)	565 (600-2)	685 (700-2 1/2)

REIL Rwy 31
HIREL Rwy 4-22 and 13-31
TDZ/CL Rwy 13

FAF to MAP 4.6 NM

Knots	120	140	160	180	200
Min:Sec	2:18	1:58	1:43	1:32	1:23

ATLANTIC CITY, NEW JERSEY
ATLANTIC CITY INTL (KACY)
Arndt 4D 25IAN24
39°27'N-74°35'W

HILLS Y or LOC Y RWY 13

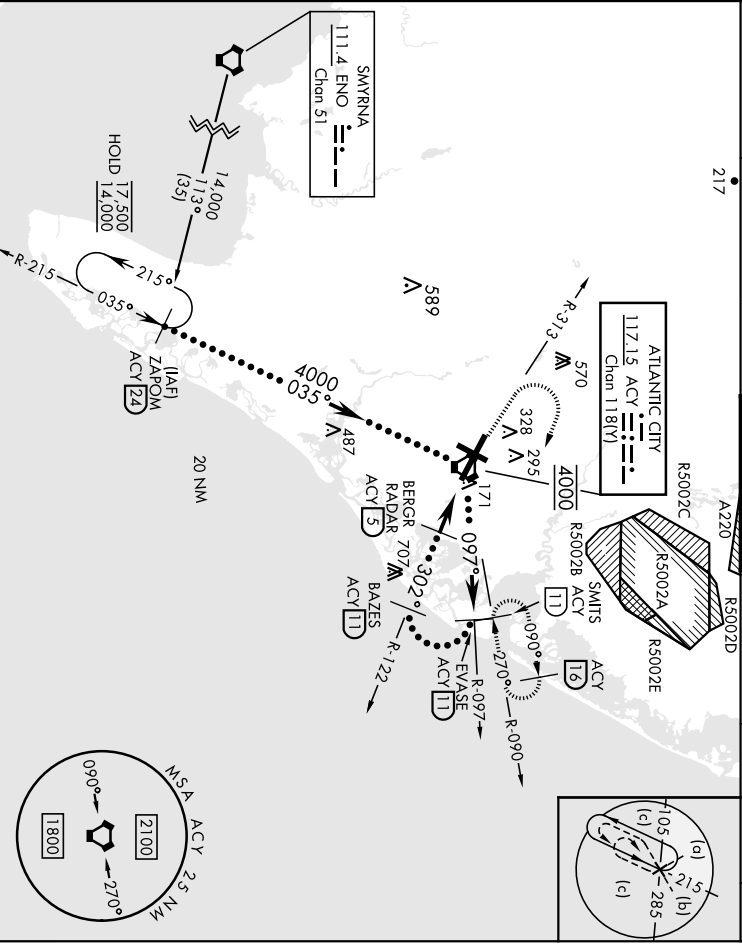
[USAF]

ATLANTIC CITY INTL (KACY)

VOR/AC ACY 117.15 Chan 1181Y	APCH CRS 302°	Rev. Idg 10,000
DME or RADAR required	TOLZ Appl Elev 75	

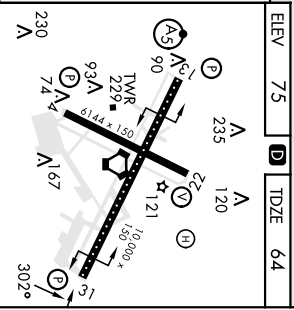
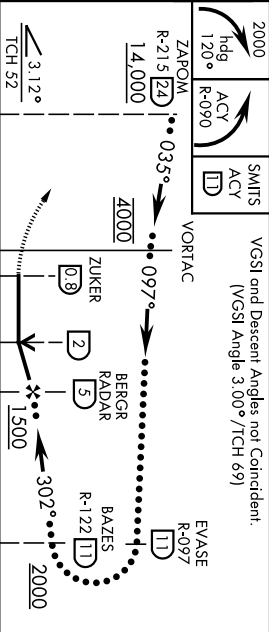
MISSED APPROACH: Climbing right turn to 2000 on heading 120° and on ACY R-090 to SMIT5/ACY 11 DME and hold.

ATIS	APP CON	TOWER	GND CON	CLNC DEL	ASR
125.725 316.15	124.6 327.125 (30° - 309°) 134.25 292.2 (310° - 129°)	120.3 239.0	121.9 284.6	127.85 353.775	



EMERG SAFE ALT 100 NM 4200

VGSI and Descent Angles not Coincident.
(VGSI Angle 3.00°/1CH 69)



CATEGORY	C	D	E			
	500-1 1/4	436	(500-1 1/4)			
S-31	620-1 1/2	640-2	760-2 1/2			
CIRCLING	545	(600-1 1/2)	565	(600-2)	685	(700-2 1/2)

ATLANTIC CITY, NEW JERSEY
 39° 27' N - 74° 35' W
 ATLANTIC CITY INTL (KACY)
 Rwy 31
 Rwy 4-22 and 13-31
 Rwy 13

LOC/DME I-ACY 109.10 Chan 28	APP CRS 308°	Rwy Idg TDZE Apt Elev	10000 64 75
---	------------------------	-----------------------------	--

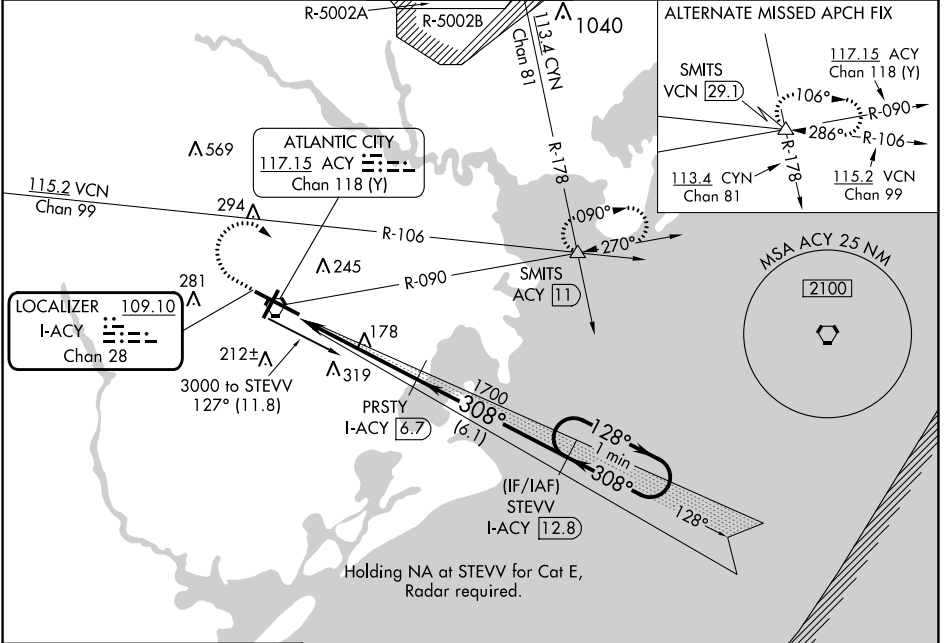
ILS or LOC/DME RWY 31

ATLANTIC CITY INTL (ACY)

ASR

MISSED APPROACH: Climb to 500 then climbing right turn to 2000 via heading 130° and via ACY R-090 to SMITS INT/ACY 11 DME and hold.

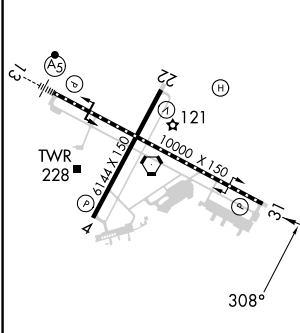
ATIS 125.725 316.15	ATLANTIC CITY APP CON 124.6 327.125	ATLANTIC CITY TOWER 120.3 239.0	GND CON 121.9 284.6	CLNC DEL 127.85 353.775
-------------------------------	---	---	-------------------------------	-----------------------------------



NE-2, 22 FEB 2024 to 21 MAR 2024

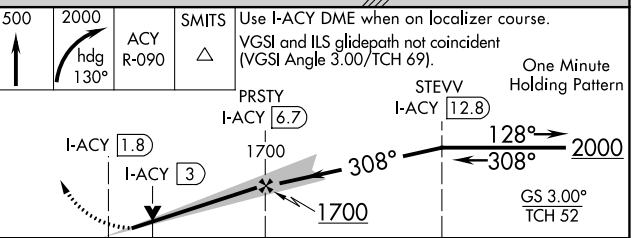
NE-2, 22 FEB 2024 to 21 MAR 2024

ELEV 75	D	TDZE 64
---------	----------	---------



TDZ/CL Rwy 13
HIRL Rws 4-22 and 13-31
REIL Rwy 31

DME REQUIRED



CATEGORY	A	B	C	D	E
S-ILS 31	264/40 200 (200-¾)				
S-LOC 31	520/50	456 (500-1)	520/60 456 (500-1¼)	520-1½	456 (500-1½)
CIRCLING	540-1	600-1	620-1½	640-2	760-2½
	465 (500-1)	525 (600-1)	545 (600-1½)	565 (600-2)	685 (700-2½)

LOC/DME I-PVO 109.1 Chan 28	APP CRS 128°	Rwy ldg 10000 TDZE 75 Apt Elev 75
---	------------------------	--

ILS Z or LOC Z RWY 13

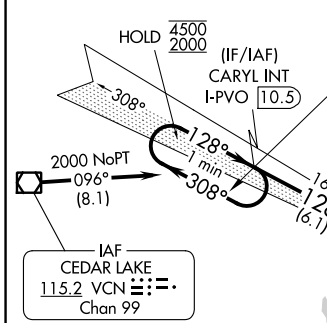
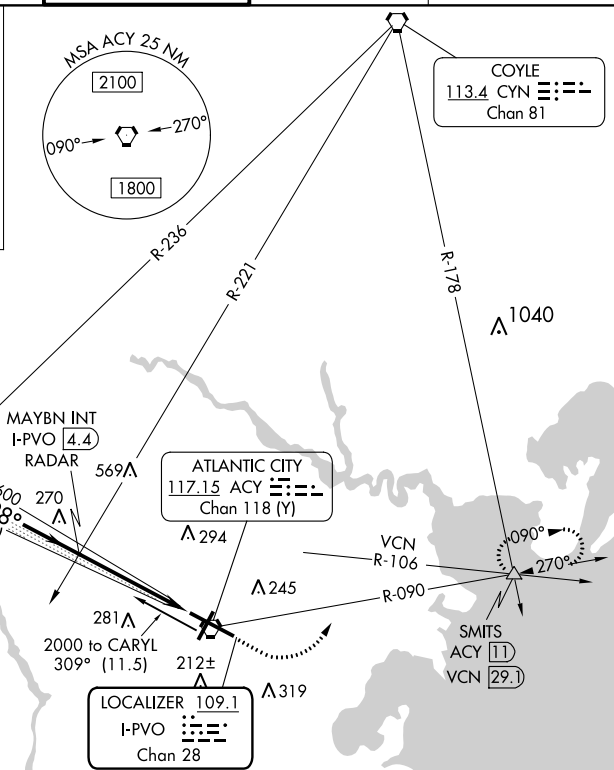
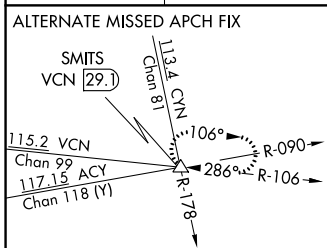
ATLANTIC CITY INTL (ACY)

ASR For inop ALS, increase S-ILS 13 Cat E visibility to RVR 4000 and S-LOC 13 Cat E visibility to 1 3/8 SM.

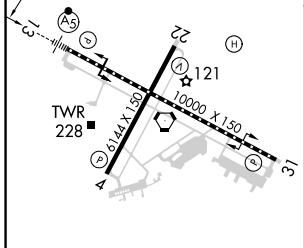


MISSED APPROACH: Climb to 600 then climbing left turn to 2000 on ACY VORTAC R-090 to SMITS INT/ACY 11 DME and hold.

ATIS 125.725 316.15	ATLANTIC CITY APP CON 124.6 327.125	ATLANTIC CITY TOWER 120.3 239.0	GND CON 121.9 284.6	CLNC DEL 127.85 353.775
-------------------------------	---	---	-------------------------------	-----------------------------------



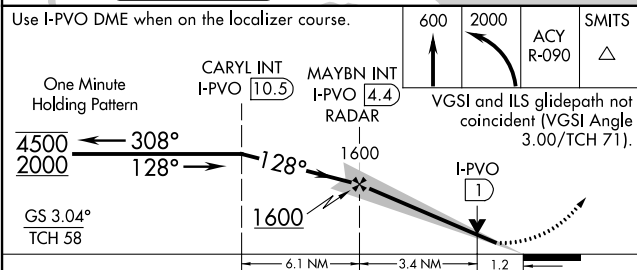
ELEV 75	D	TDZE 75
---------	----------	---------



TDZ/CL Rwy 13
HIRL Rwy 4-22 and 13-31
REIL Rwy 31

FAF to MAP 4.6 NM

Knots	60	90	120	150	180
Min:Sec	4:36	3:04	2:18	1:50	1:32



CATEGORY	A	B	C	D	E
S-ILS 13	275/18 200 (200-1/2)				
S-LOC 13	520/24	445 (500-1/2)	520/45	445 (500-2/3)	
CIRCLING	540-1 465 (500-1)	600-1 525 (600-1)	620-1 1/2 545 (600-1 1/2)	640-2 565 (600-2)	760-2 1/2 685 (700-2 1/2)

NE-2, 22 FEB 2024 to 21 MAR 2024

NE-2, 22 FEB 2024 to 21 MAR 2024

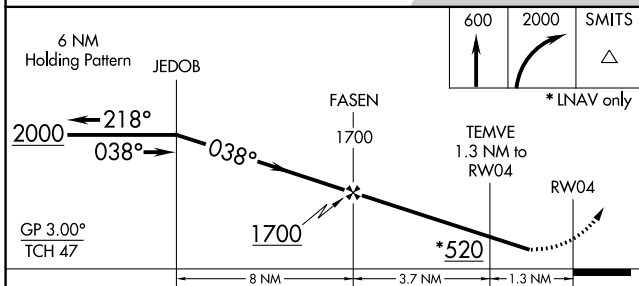
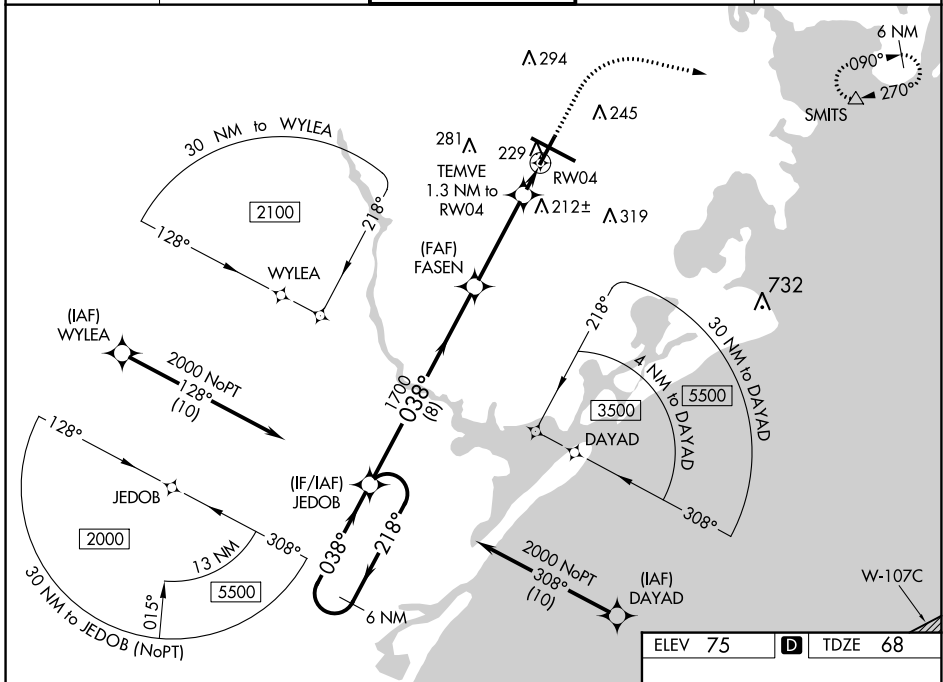
WAAS CH 78231 W04A	APP CRS 038°	Rwy Idg TDZE Apt Elev	6144 68 75
--	------------------------	-----------------------------	---------------------------------------

RNAV (GPS) RWY 4

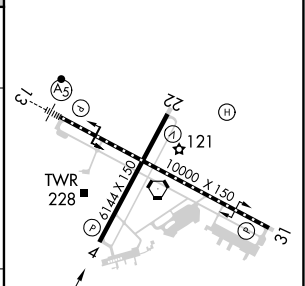
ATLANTIC CITY INTL (ACY)

RNP APCH - GPS.		<p>▼ For uncompensated Baro-VNAV systems, LNAV/VNAV NA below -13°C (9°F) or above 54°C (130°F). Rwy 4 helicopter visibility reduction below ¾ SM NA.</p> <p>▲ ASR</p>		<p>MISSED APPROACH: Climb to 600 then climbing right turn to 2000 direct SMITS and hold.</p>	
-----------------	--	---	--	--	--

ATIS 125.725 316.15	ATLANTIC CITY APP CON 124.6 327.125	ATLANTIC CITY TOWER 120.3 239.0	GND CON 121.9 284.6	CLNC DEL 127.85 353.775
-------------------------------	---	---	-------------------------------	-----------------------------------



ELEV 75	D	TDZE 68
---------	----------	---------



CATEGORY	A	B	C	D	E
LPV DA	318-1		250 (300-1)		
LNAV/VNAV DA	534-1½		466 (500-1½)		
LNAV MDA	480-1 412 (500-1)		480-1½ 412 (500-1½)		
CIRCLING	540-1 465 (500-1)	600-1 525 (600-1)	620-1½ 545 (600-1½)	640-2 565 (600-2)	760-2½ 685 (700-2½)

TDZ/CL Rwy 13
HIRL Rwy 4-22 and 13-31
REIL Rwy 31

NE-2, 22 FEB 2024 to 21 MAR 2024

NE-2, 22 FEB 2024 to 21 MAR 2024

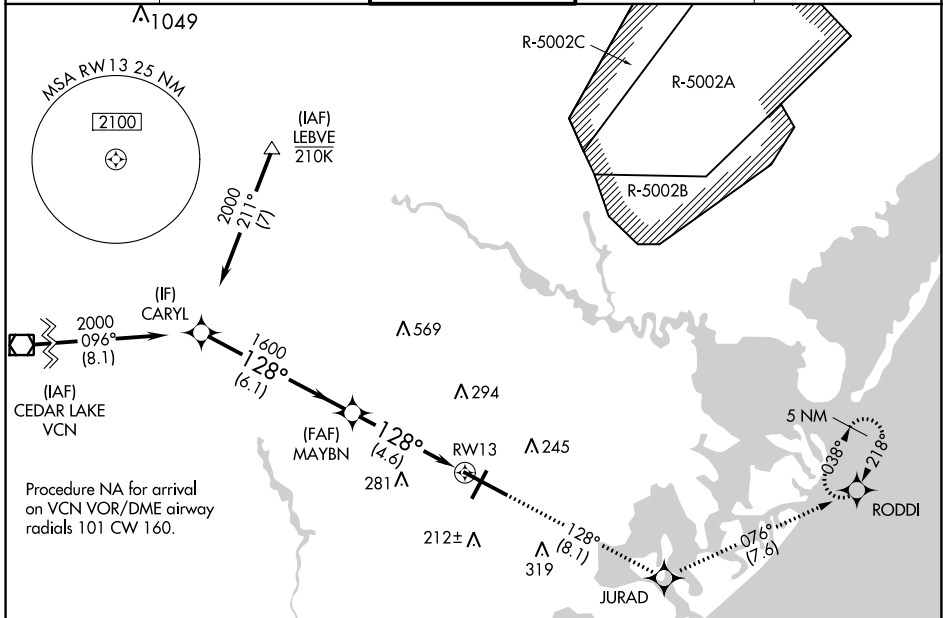
APP CRS	Rwy Ldg	10000
128°	TDZE	75
	Apt Elev	75

RNAV (RNP) Z RWY 13

ATLANTIC CITY INTL (ACY)

NA ASR	For uncompensated Baro-VNAV systems, procedure NA below -13°C (9°F) or above 54°C (130°F). GPS required. For inop ALS, increase RNP 0.30 all Cats visibility to RVR 6000.	MALSR 	MISSED APPROACH: Climb to 2000 on track 128° to JURAD and on track 076° to RODDI and hold.
-----------	--	-----------	--

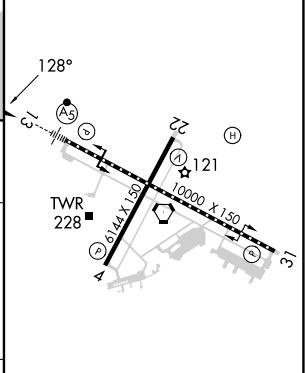
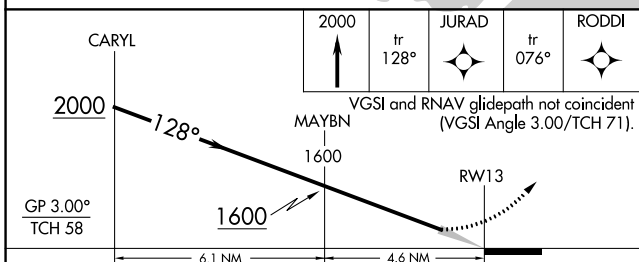
ATIS	ATLANTIC CITY APP CON	ATLANTIC CITY TOWER	GND CON	CLNC DEL
125.725 316.15	124.6 327.125	120.3 239.0	121.9 284.6	127.85 353.775



NE-2, 22 FEB 2024 to 21 MAR 2024

NE-2, 22 FEB 2024 to 21 MAR 2024

ELEV	75	D	TDZE	75
------	-----------	----------	------	-----------



CATEGORY	A	B	C	D
RNP 0.30 DA		442/40	367 (400-¾)	

TDZ/CL Rwy 13
 HIRL Rwy 4-22 and 13-31
 REIL Rwy 31

AUTHORIZATION REQUIRED

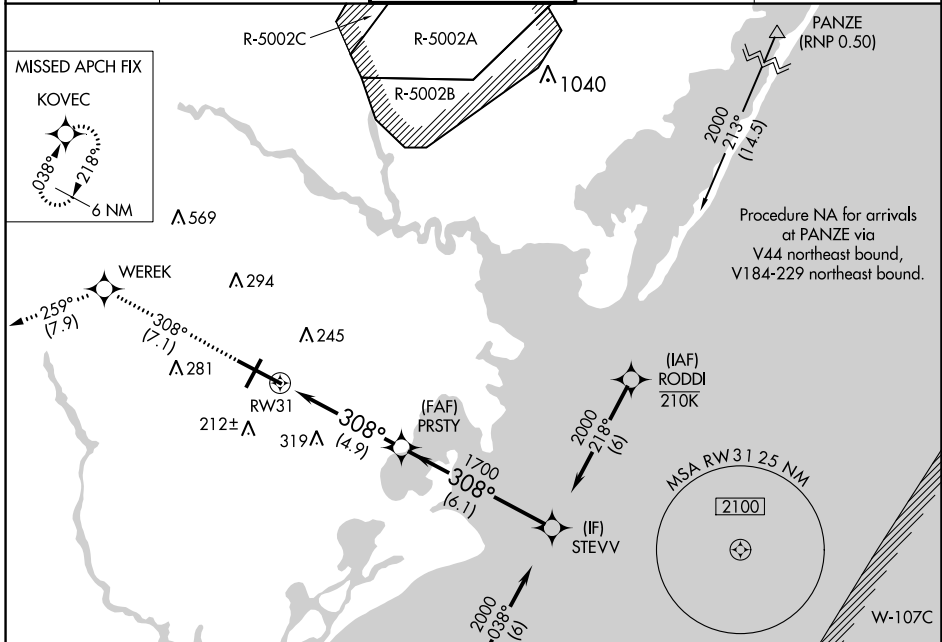
APP CRS	Rwy ldg	10000
308°	TDZE	63
	Apt Elev	75

RNAV (RNP) Z RWY 31

ATLANTIC CITY INTL (ACY)

ASR	GPS Required. Procedure NA at night. For uncompensated Baro-VNAV systems, procedure NA below -13°C (8°F) or above 54°C (130°F).	MISSED APPROACH: Climb to 2000 on track 308° to WEREK on track 259° to KOVEC and hold.
-----	--	--

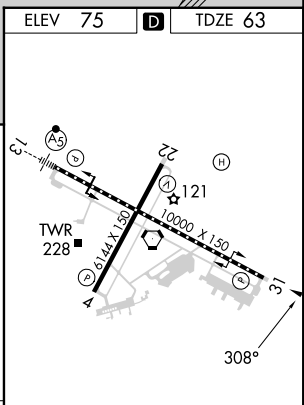
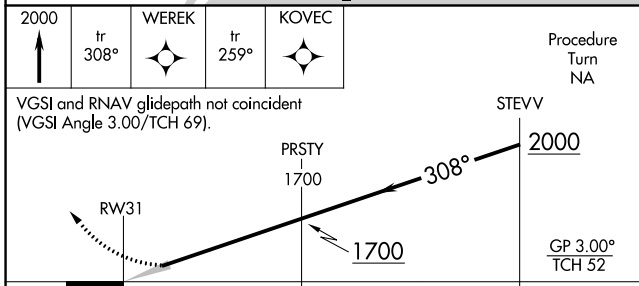
ATIS	ATLANTIC CITY APP CON	ATLANTIC CITY TOWER	GND CON	CLNC DEL
125.725 316.15	124.6 327.125	120.3 239.0	121.9 284.6	127.85 353.775



NE-2, 22 FEB 2024 to 21 MAR 2024

NE-2, 22 FEB 2024 to 21 MAR 2024

ELEV 75	D	TDZE 63
---------	----------	---------



CATEGORY	A	B	C	D
RNP 0.30 DA		408/60	345 (400-1¼)	

AUTHORIZATION REQUIRED

TDZ/CL Rwy 13
HIRL Rwy 4-22 and 13-31
REIL Rwy 31

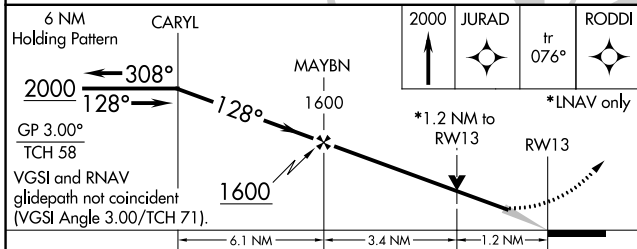
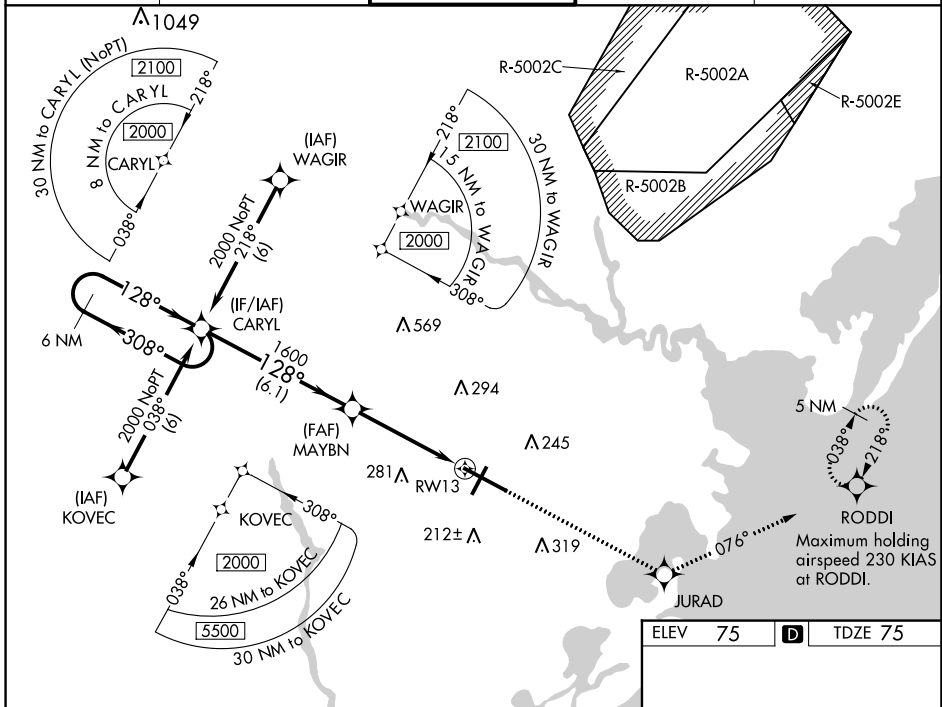
WAAS CH 45513 W13A	APP CRS 128°	Rwy Idg 10000 TDZE 75 Apt Elev 75
--	------------------------	--

RNAV (GPS) Y RWY 13

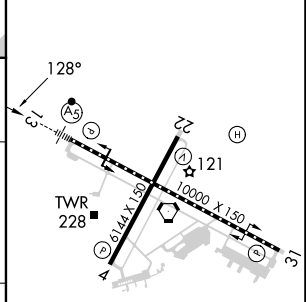
ATLANTIC CITY INTL (ACY)

RNP APCH - GPS	MALSR 	MISSED APPROACH: Climb to 2000 direct JURAD and on track 076° to RODDI and hold.
<p>▼ For inoperative MALSR, increase LPV Cat E visibility to RVR 4000, LNAV/VNAV Cat E visibility to 1½, and LNAV Cat D visibility to RVR 6000, Cat E visibility to 1½. For uncompensated Baro-VNAV ASR systems, LNAV/VNAV NA below -15°C (5°F) or above 48°C (118°F).</p>		

ATIS 125.725 316.15	ATLANTIC CITY APP CON 124.6 327.125	ATLANTIC CITY TOWER 120.3 239.0	GND CON 121.9 284.6	CLNC DEL 127.85 353.775
-------------------------------	---	---	-------------------------------	-----------------------------------



ELEV 75	D	TDZE 75
---------	----------	---------



CATEGORY	A	B	C	D	E
LPV DA	275/18 200 (200-½)				
LNAV/VNAV DA	475/40 400 (400-¾)				
LNAV MDA	520/24 445 (500-½)	520/40 445 (500-¾)		520/50	445 (500-1)
CIRCLING	540-1 465 (500-1)	600-1 525 (600-1)	620-1½ 545 (600-1½)	640-2 565 (600-2)	760-2½ 685 (700-2½)

TDZ/CL Rwy 13
HIRL Rwy 4-22 and 13-31
REIL Rwy 31

NE-2, 22 FEB 2024 to 21 MAR 2024

NE-2, 22 FEB 2024 to 21 MAR 2024

WAAS CH 50113 W31A	APP CRS 308°	Rwy Idg TDZE Apt Elev	10000 63 75
--	------------------------	-----------------------------	--

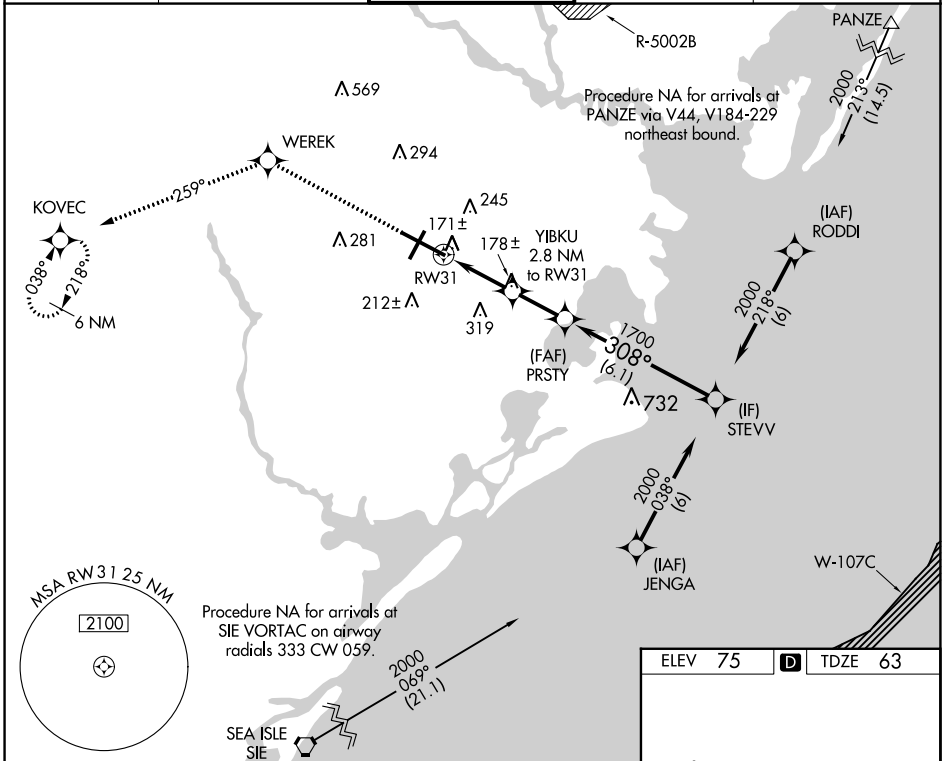
RNAV (GPS) Y RWY 31

ATLANTIC CITY INTL (ACY)

RNP APCH - GPS.
 For uncompensated Baro-VNAV systems, LNAV/VNAV NA below -15°C (5°F) or above 48°C (118°F).
 ASR

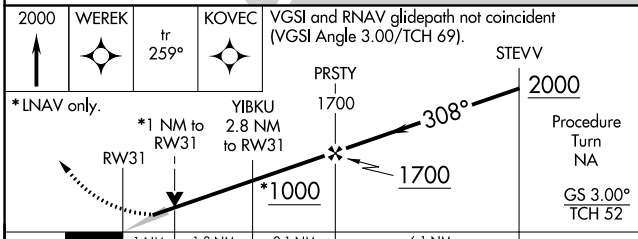
MISSED APPROACH: Climb to 2000 direct WEREK and on track 259° to KOVEC and hold.

ATIS 125.725 316.15	ATLANTIC CITY APP CON 124.6 327.125	ATLANTIC CITY TOWER 120.3 239.0	GND CON 121.9 284.6	CLNC DEL 127.85 353.775
-------------------------------	---	---	-------------------------------	-----------------------------------

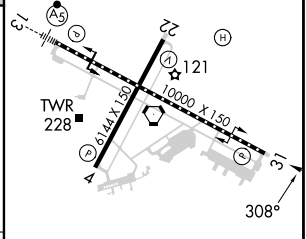


NE-2, 22 FEB 2024 to 21 MAR 2024

NE-2, 22 FEB 2024 to 21 MAR 2024



ELEV 75	D	TDZE 63
---------	----------	---------



CATEGORY	A	B	C	D	E
LPV DA		263/40	200 (200-¾)		
LNAV/VNAV DA		421/60	358(400-1¼)		
LNAV MDA	440/50	377 (400-1)	440/60	377 (400-1¼)	
CIRCLING	540-1 465 (500-1)	600-1 525 (600-1)	620-1½ 545 (600-1½)	640-2 565 (600-2)	760-2½ 685 (700-2½)

TDZ/CL Rwy 13
 HIRL Rwy 4-22 and 13-31
 REIL Rwy 31

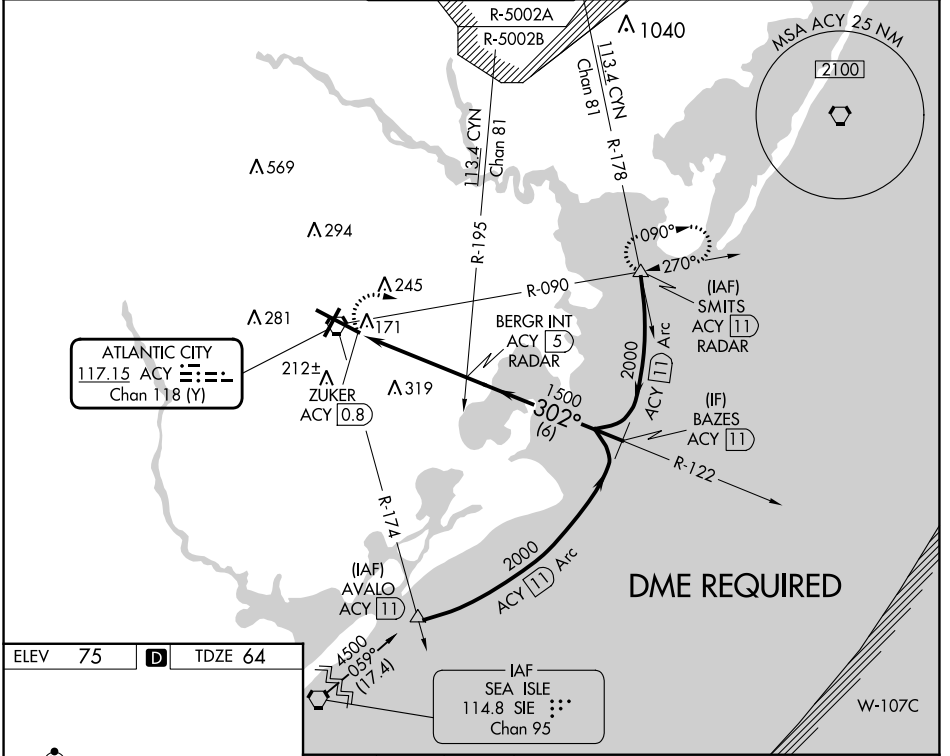
VORTAC ACY 117.15 Chan 118 (Y)	APP CRS 302°	Rwy ldg 10000 TDZE 64 Apt Elev 75
---	------------------------	--

VOR RWY 31

ATLANTIC CITY INTL (ACY)

 ASR	MISSED APPROACH: Climbing right turn to 2000 via heading 120° and ACY R-090 to SMITS INT/ACY 11 DME and hold.
--	---

ATIS 125.725 316.15	ATLANTIC CITY APP CON 124.6 327.125	ATLANTIC CITY TOWER 120.3 239.0	GND CON 121.9 284.6	CLNC DEL 127.85 353.775
-------------------------------	---	---	-------------------------------	-----------------------------------



NE-2, 22 FEB 2024 to 21 MAR 2024

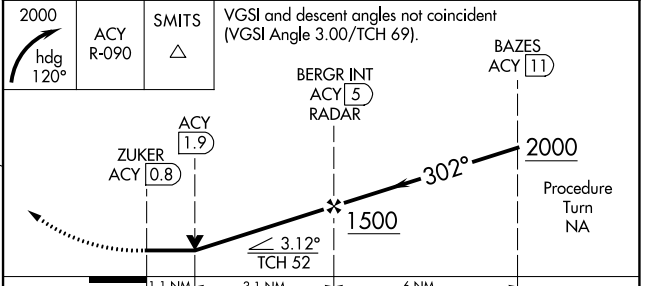
NE-2, 22 FEB 2024 to 21 MAR 2024

ELEV 75	D	TDZE 64
---------	----------	---------

TDZ/CL Rwy 13
HIRL Rwys 4-22 and 13-31
REIL Rwy 31

FAF to MAP 4.2 NM

Knots	60	90	120	150	180
Min:Sec	4:12	2:48	2:06	1:41	1:24



CATEGORY	A	B	C	D	E
S-31	480/50	416 (500-1)	480/60	416 (500-1¼)	480-1½ 416 (500-1½)
CIRCLING	540-1 465 (500-1)	600-1 525 (600-1)	620-1½ 545 (600-1½)	640-2 565 (600-2)	760-2½ 685 (700-2½)

VORTAC ACY 117.15 Chan 118 (Y)	APP CRS 048°	Rwy ldg TDZE Apt Elev 6144 68 75
--	------------------------	--

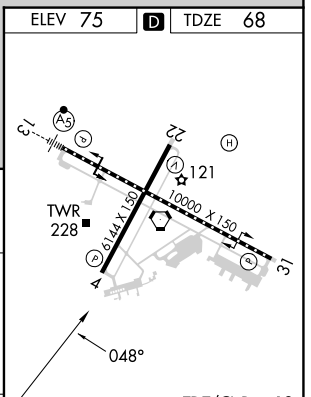
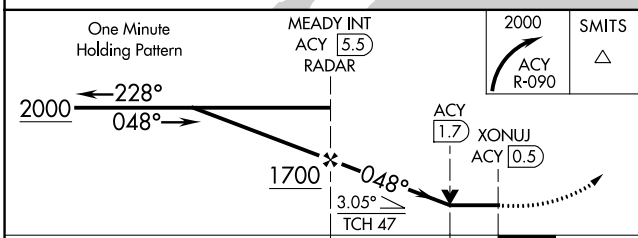
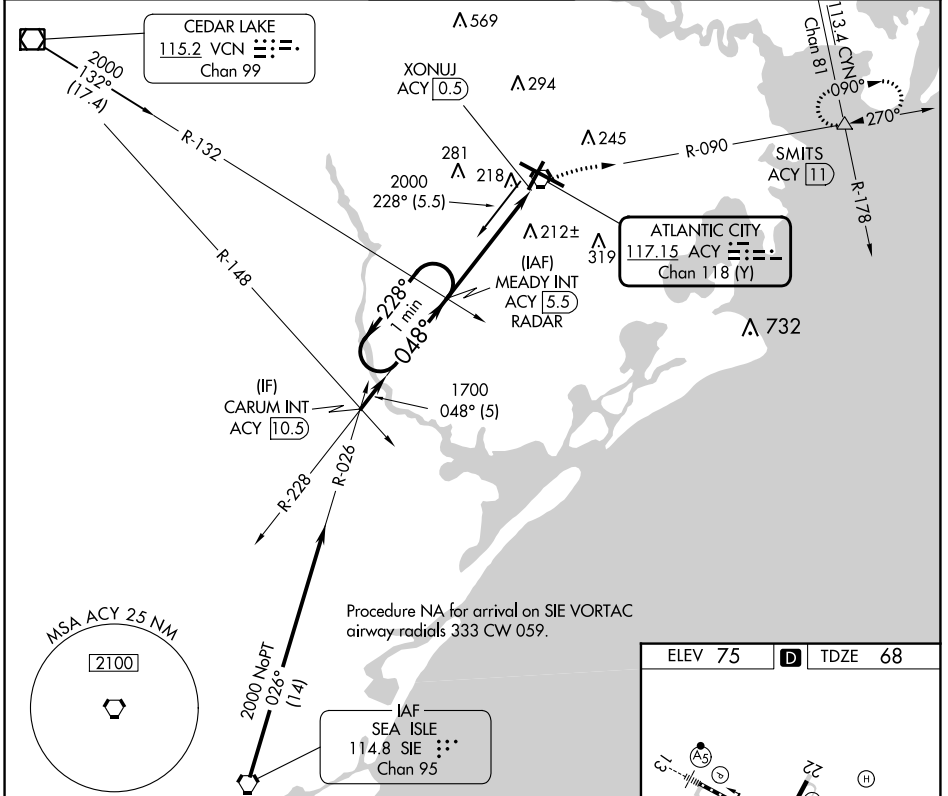
VOR RWY 4

ATLANTIC CITY INTL (ACY)

ASR Rwy 4 helicopter visibility reduction below 3/4 SM NA.

MISSED APPROACH: Climbing right turn to 2000 on ACY VORTAC R-090 to SMITS INT/11 DME and hold.

ATIS 125.725 316.15	ATLANTIC CITY APP CON 124.6 327.125	ATLANTIC CITY TOWER 120.3 239.0	GND CON 121.9 284.6	CLNC DEL 127.85 353.775
-------------------------------	---	---	-------------------------------	-----------------------------------



CATEGORY	A	B	C	D	E	Knots Min:Sec	60	90	120	150	180
	480-1	412 (500-1)	480-1 1/4	412 (500-1 1/4)	480-1 1/2		412 (500-1 1/2)	4:54	3:16	2:27	1:58
CIRCLING	540-1	600-1	620-1 1/2	640-2	760-2 1/2	FAF to MAP 4.9 NM					
	465 (500-1)	525 (600-1)	545 (600-1 1/2)	565 (600-2)	685 (700-2 1/2)						

NE-2, 22 FEB 2024 to 21 MAR 2024

NE-2, 22 FEB 2024 to 21 MAR 2024

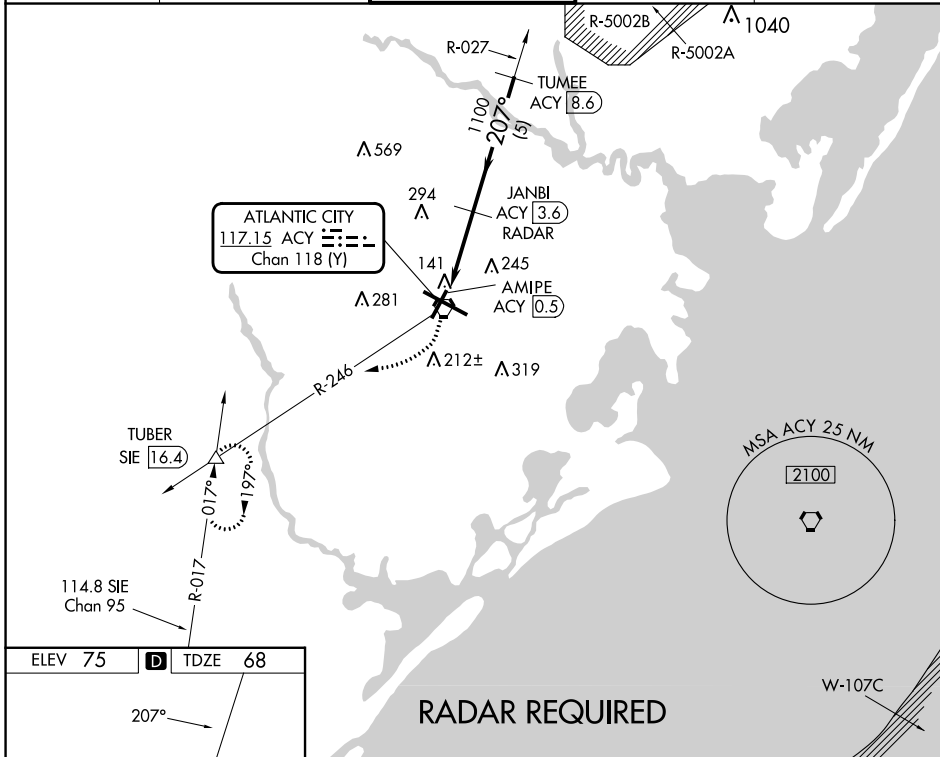
VORTAC ACY 117.15 Chan 118 (Y)	APP CRS 207°	Rwy ldg 6144 TDZE 68 Apt Elev 75
---	------------------------	---

VOR/DME RWY 22

ATLANTIC CITY INTL (ACY)

Helicopter visibility reduction below 3/4 SM NA. ASR	MISSED APPROACH: Climbing right turn to 2000 on ACY R-246 to TUBER INT/SIE 16.4 DME and hold.
---	---

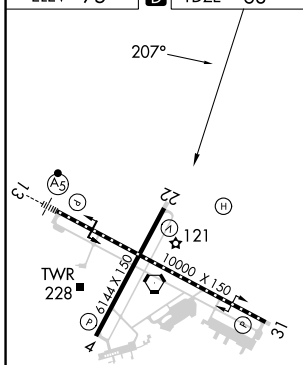
ATIS 125.725 316.15	ATLANTIC CITY APP CON 124.6 327.125	ATLANTIC CITY TOWER 120.3 239.0	GND CON 121.9 284.6	CLNC DEL 127.85 353.775
-------------------------------	---	---	-------------------------------	-----------------------------------



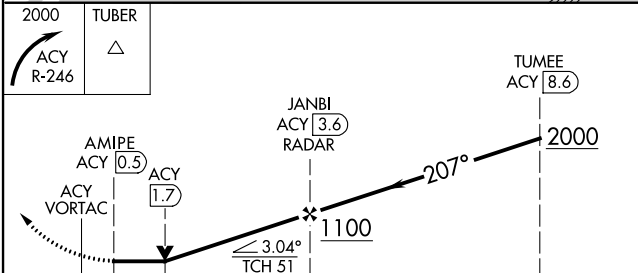
NE-2, 22 FEB 2024 to 21 MAR 2024

NE-2, 22 FEB 2024 to 21 MAR 2024

ELEV 75	D	TDZE 68
---------	----------	---------



TDZ/CL Rwy 13
HIRL Rwy 4-22 and 13-31
REL Rwy 31



CATEGORY	A	B	C	D	E
S-22	480-1	412 (500-1)	480-1 1/8	412 (500-1 1/8)	
CIRCLING	540-1 465 (500-1)	600-1 525 (600-1)	620-1 1/2 545 (600-1 1/2)	640-2 565 (600-2)	760-2 1/2 685 (700-2 1/2)