

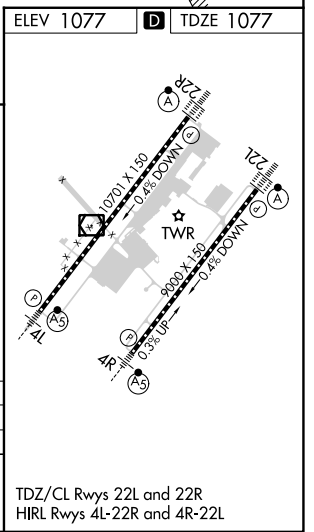
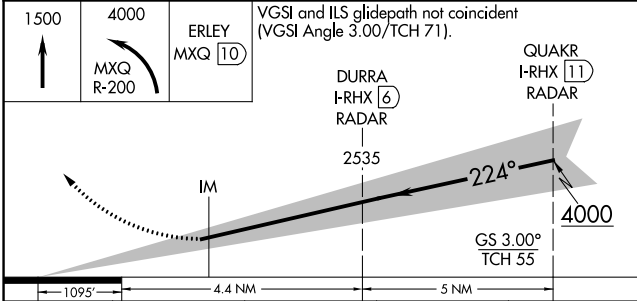
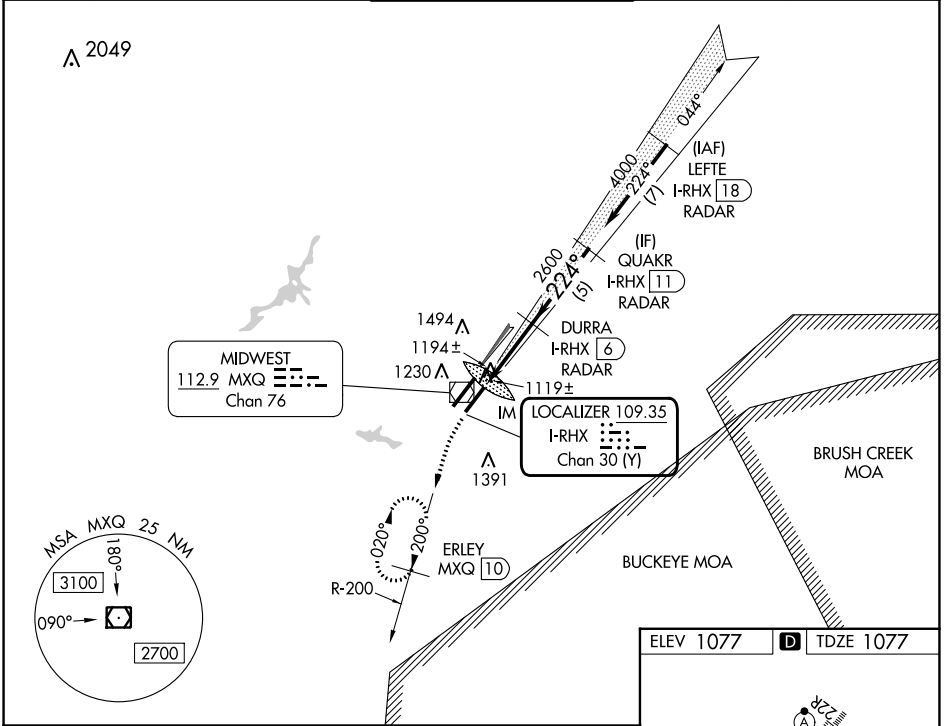
LOC/DME I-RHX 109.35 Chan 30 (Y)	APP CRS 224°	Rwy Idg 9000 TDZE 1077 Apt Elev 1077
------------------------------------------------------	------------------------	-----------------------------------------------------------------

ILS RWY 22L (SA CAT I)

WILMINGTON AIR PARK (ILN)

DME required for missed approach. RADAR required for procedure entry.	ALSF-2 	MISSED APPROACH: Climb to 1500 then climbing left turn to 4000 on MXQ VOR/DME R-200 to ERLEY/MXQ 10 DME and hold.
Simultaneous approach authorized. Requires specific OPSPEC, MSPEC, or LOA approval. Procedure NA when closed.		

D-ATIS 124.925	COLUMBUS APP CON 118.85 269,275	WILMINGTON TOWER 119,475	GND CON 121.6	CLNC DEL 128.85
--------------------------	-------------------------------------------	------------------------------------	-------------------------	---------------------------



CATEGORY	A	B	C	D
S-ILS 22L	RA 152/16 150 DA 1227			
SA CATEGORY I ILS - SPECIAL AIRCREW & AIRCRAFT CERTIFICATION REQUIRED				

EC-2, 22 FEB 2024 to 21 MAR 2024

EC-2, 22 FEB 2024 to 21 MAR 2024

TDZ/CL Rwy 22L and 22R
HIRL Rwy 4L-22R and 4R-22L