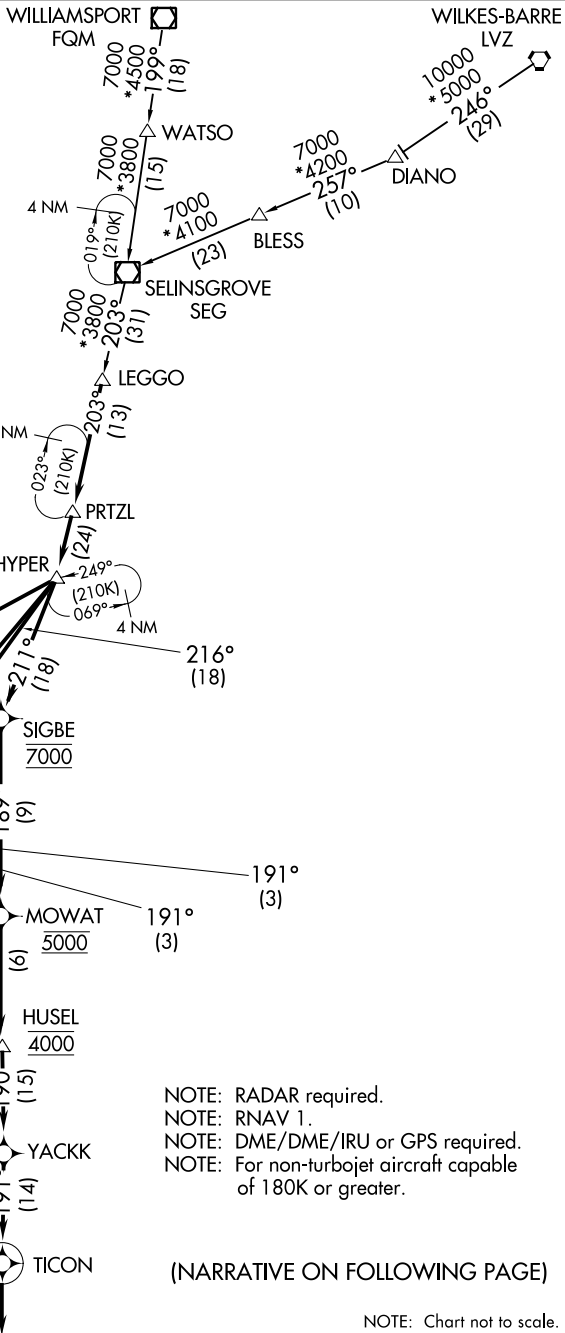


LEGGO SIX ARRIVAL (RNAV)

POTOMAC APP CON
133.0 288.35
D-ATIS
134.85



NOTE: RADAR required.
 NOTE: RNAV 1.
 NOTE: DME/DME/IRU or GPS required.
 NOTE: For non-turbojet aircraft capable of 180K or greater.

(NARRATIVE ON FOLLOWING PAGE)

NOTE: Chart not to scale.

NE-3, 22 FEB 2024 to 21 MAR 2024

NE-3, 22 FEB 2024 to 21 MAR 2024

LEGGO SIX ARRIVAL (RNAV)

LEGGO SIX ARRIVAL (RNAV)

ARRIVAL ROUTE DESCRIPTION

WILKES-BARRE TRANSITION (LVZ.LEGGO6):
WILLIAMSPORT TRANSITION (FQM.LEGGO6):
SELINGSGROVE TRANSITION (SEG.LEGGO6):

From LEGGO on track 203° to PRTZL, then on track 203° to HYPER.

LANDING RWYS 1C/R: From HYPER on track 211° to cross SIGBE at 7000, then on track 189° to cross MOWAT at 5000, then on track 189° to cross HUSEL at 4000, then on track 190° to YACKK, then on track 191° to TICON, then on track 191°. Expect RADAR vectors to final approach course.

LANDING RWY 1L: From HYPER on track 220° to cross CRAIN at 6000, then on track 214° to cross KUKSE at 5000, then on track 191° to ELISN, then on track 191° to MIKEJ, then on track 191°. Expect RADAR vectors to final approach course.

LANDING RWY 19C: From HYPER on track 219° to cross COVUR at 7000, then on track 191° to DIMKE, then on track 191° to cross HOOSR at or above 5000. Expect ILS or LOC to Rwy 19C approach.

LANDING RWY 19L: From HYPER on track 216° to cross OOGLE at or below 5000, then on track 217° to cross LITEY at 4000, then on track 191° to cross YYANG at 4000, then on track 191° to cross DADEY at or above 3000. Expect ILS or LOC to Rwy 19L approach.

LANDING RWY 19R: From HYPER on track 220° to cross CRAIN at 6000, then on track 220° to cross REXOE at 6000, then on track 191° to cross BEEZY at or above 4000. Expect ILS or LOC to Rwy 19R approach.

NE-3, 22 FEB 2024 to 21 MAR 2024

NE-3, 22 FEB 2024 to 21 MAR 2024