

WAAS CH 78120 W26A	APP CRS 262°	Rwy Idg TDZE Apt Elev	4300 1123 1123
--	------------------------	-----------------------------	---

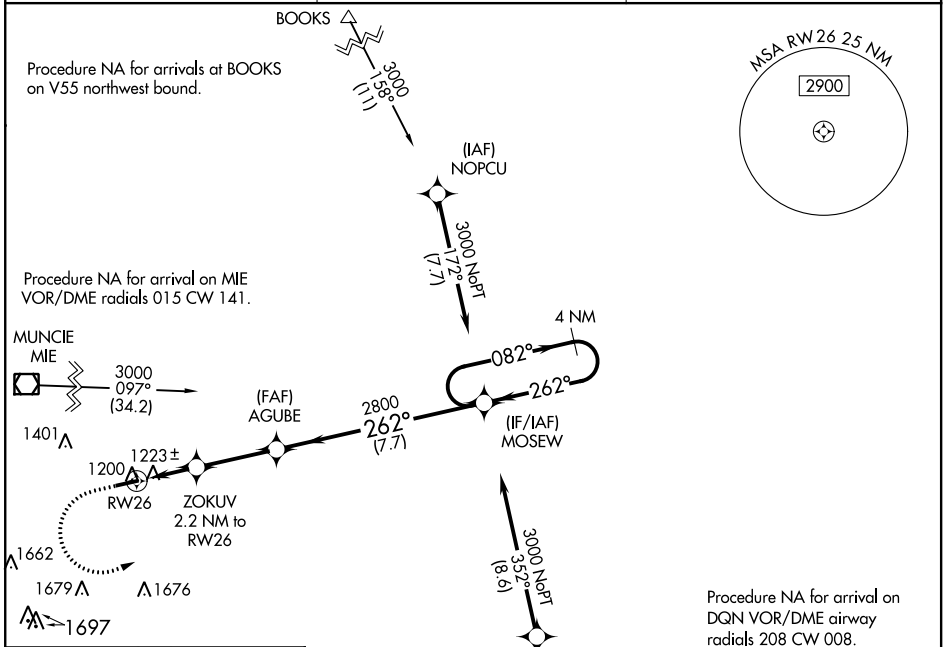
RNAV (GPS) RWY 26

RANDOLPH COUNTY (I22)

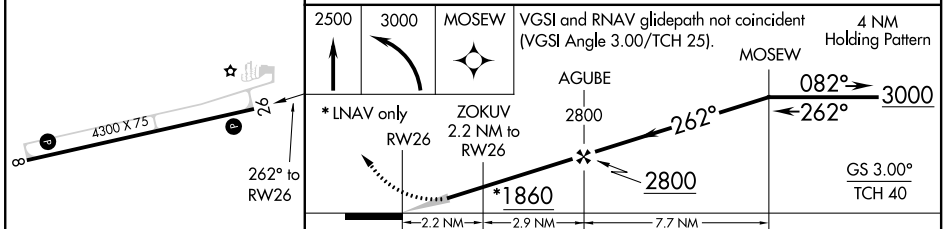
NA Baro-VNAV NA. DME/DME RNP-0.3 NA. Use Versailles altimeter setting; when not received, use Muncie altimeter setting and increase all DA/MDA 20 feet and increase LPV visibility all Cats, LNAV/VNAV visibility all Cats and LNAV Cat C visibility 1/2 mile.

MISSED APPROACH: Climb to 2500 then climbing left turn to 3000 direct MOSEW and hold.

VES AWOS-3 125.9	COLUMBUS APP CON 118.425 352.05	UNICOM 123.0 (CTAF)
----------------------------	---	-------------------------------



ELEV 1123	TDZE 1123
-----------	-----------



CATEGORY	A	B	C	D
LPV DA	1495-1¼ 372 (400-1¼)			NA
LNAV/ VNAV DA	1432-1 309 (400-1)			NA
LNAV MDA	1540-1	417 (500-1)	1540-1¼ 417 (500-1¼)	NA
C CIRCLING	1620-1	497 (500-1)	1820-2 697 (700-2)	NA

EC-2, 07 OCT 2021 to 04 NOV 2021

EC-2, 07 OCT 2021 to 04 NOV 2021

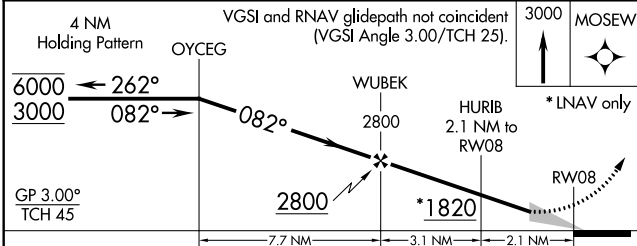
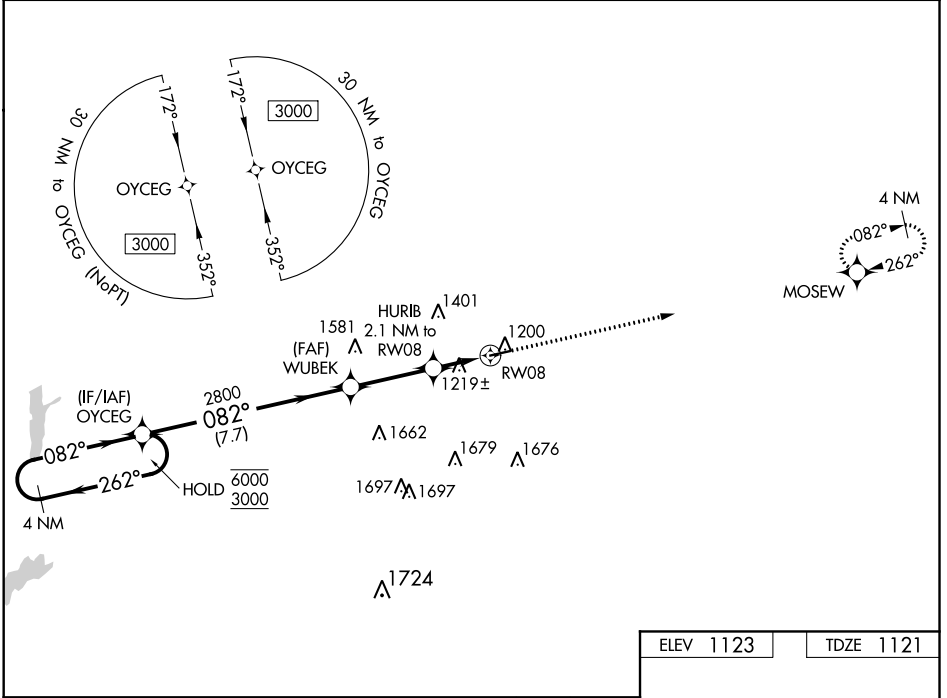
REIL Rwy 8 and 26
MIRL Rwy 8-26

WAAS CH 90420 W08A	APP CRS 082°	Rwy Idg TDZE Apt Elev	4300 1121 1123
--	------------------------	-----------------------------	---

RNAV (GPS) RWY 8

RANDOLPH COUNTY (I22)

RNP APCH.		MISSED APPROACH: Climb to 3000 direct MOSEW and hold.
▼ ▲ NA	Baro-VNAV NA.	
VES AWOS-3 125.9	COLUMBUS APP CON 118.425 352.05	UNICOM 123.0 (CTAF) 1



CATEGORY	A	B	C	D
LPV DA	1430-7/8	309 (400-7/8)		NA
LNAV/VNAV DA	1430-7/8	309 (400-7/8)		NA
LNAV MDA	1560-1	439 (500-1)	1560-1 1/4 439 (500-1 1/4)	NA
C CIRCLING	1620-1	497 (500-1)	1820-2 697 (700-2)	NA

ELEV 1123	TDZE 1121
-----------	-----------

RWY 8: 4300 X 75, 26° heading. MIREL Rwy 8-26 1, REIL Rwy 8 and 26 1.

EC-2, 07 OCT 2021 to 04 NOV 2021

EC-2, 07 OCT 2021 to 04 NOV 2021

WINCHESTER, INDIANA

AL-6189 (FAA)

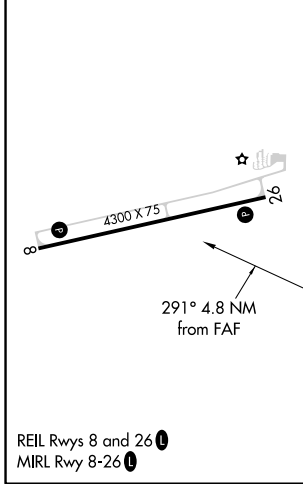
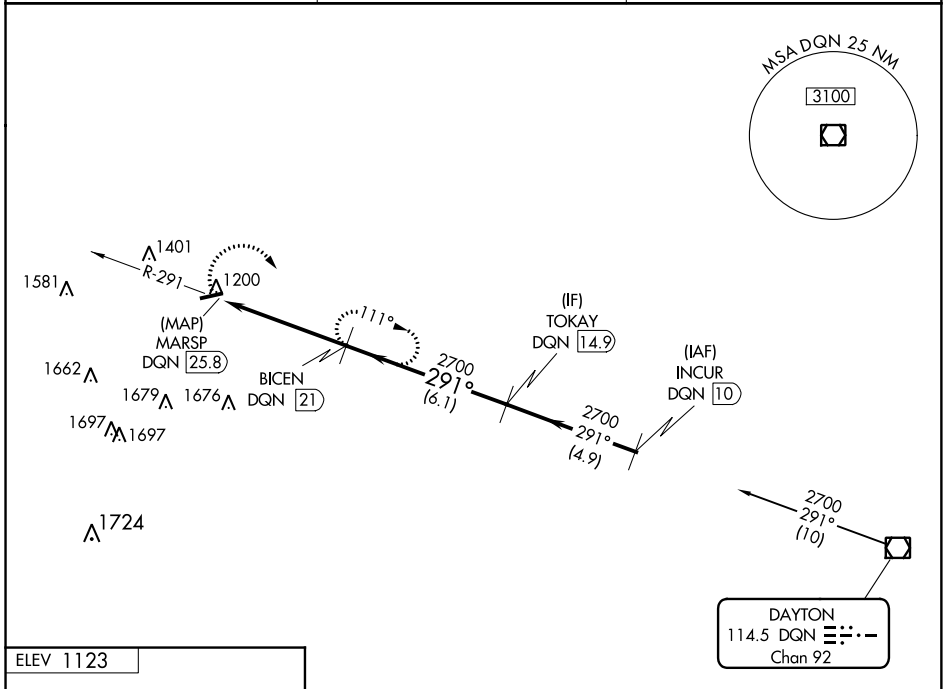
20254

VOR/DME DQN 114.5 Chan 92	APP CRS 291°	Rwy Idg TDZE Apt Elev N/A N/A 1123
---	------------------------	--

VOR-A
RANDOLPH COUNTY (I22)

DME required.	MISSED APPROACH: Climbing right turn to 2700 on DQN VOR/DME R-291 to BICEN/21 DME and hold.
---------------	--

VES AWOS-3 125.9	COLUMBUS APP CON 118.425 352.05	UNICOM 123.0 (CTAF)
----------------------------	---	-------------------------------



Procedure NA for arrival on DQN VOR/DME
airway radials 234 CW 329.

2700 DQN R-291	BICEN DQN 21	BICEN DQN 21	TOKAY DQN 14.9	
MARSPP DQN 25.8	2700	2700	2700	
4.8 NM	6.1 NM			
CATEGORY	A	B	C	D
CIRCLING	1700-1	577 (600-1)	1820-2 697 (700-2)	NA

EC-2, 07 OCT 2021 to 04 NOV 2021

EC-2, 07 OCT 2021 to 04 NOV 2021

WINCHESTER, INDIANA
Amdt 10 13SEP18

40°10'N-84°56'W

RANDOLPH COUNTY (I22)
VOR-A