

WAAS CH 70733 W01A	APP CRS 015°	Rwy Idg 4000 TDZE 880 Apt Elev 880
---------------------------------	------------------------	---

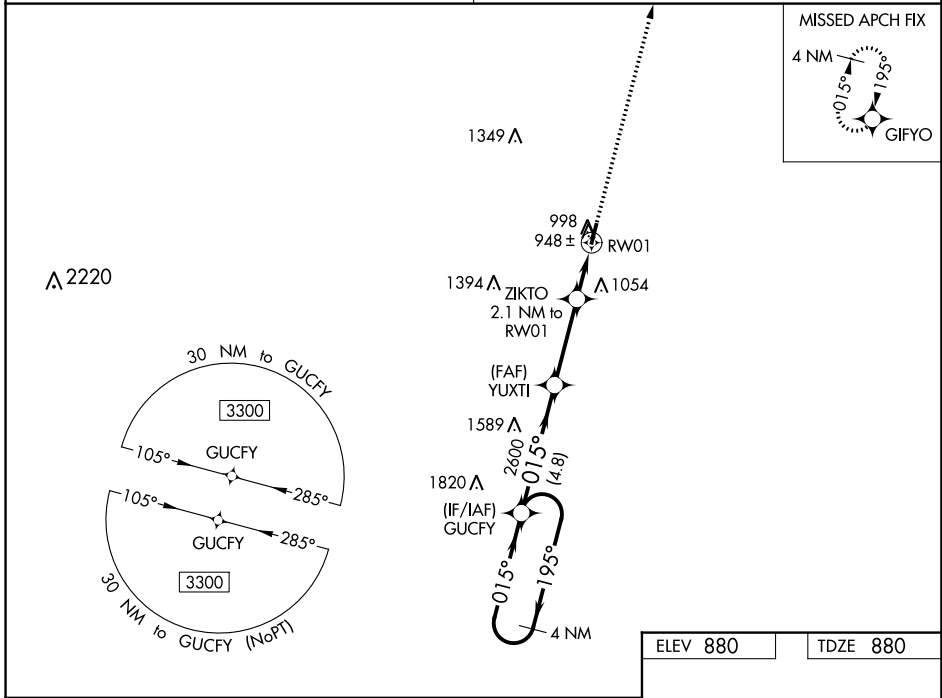
RNAV (GPS) RWY 1

A PAUL VANCE FREDERICKTOWN RGNL (H88)

NA Baro-VNAV NA. DME/DME RNP-0.3 NA. Use Farmington altimeter setting; when not received, use Sparta altimeter setting and increase all DA 111 feet, all MDA 120 feet and increase LPV all Cats visibility, LNAV/VNAV all Cats visibility and LNAV Cat C visibility 3/8 mile, and Circling Cat C visibility 1/2 mile.

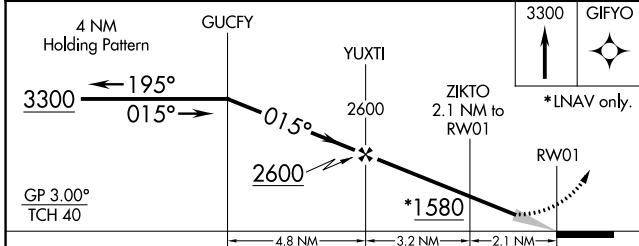
MISSED APPROACH: Climb to 3300 direct GIFYO and hold.

KANSAS CITY CENTER 127.475 346.275	UNICOM 122.8 (CTAF) 0
--	---------------------------------

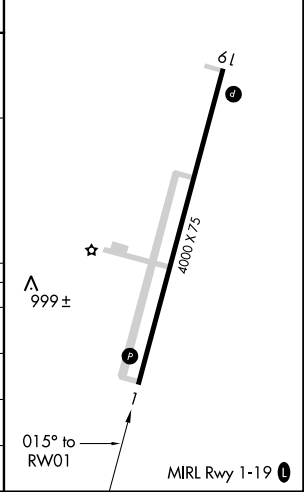


NC-3, 22 FEB 2024 to 21 MAR 2024

NC-3, 22 FEB 2024 to 21 MAR 2024



ELEV 880	TDZE 880
----------	----------



CATEGORY	A	B	C	D
LPV DA		1166-1 286 (300-1)		NA
LNAV/VNAV DA		1166-1 286 (300-1)		NA
LNAV MDA		1240-1 360 (400-1)		NA
C CIRCLING	1380-1 500 (500-1)	1520-1 640 (700-1)	1640-2 1/4 760 (800-2 1/4)	NA

RNAV (GPS) RWY 1

WAAS CH 72733 W19A	APP CRS 195°	Rwy Idg 4000 TDZE 880 Apt Elev 880
--	------------------------	---

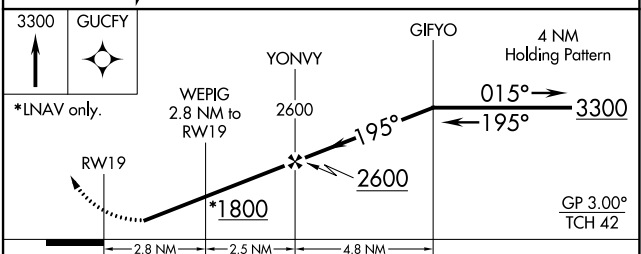
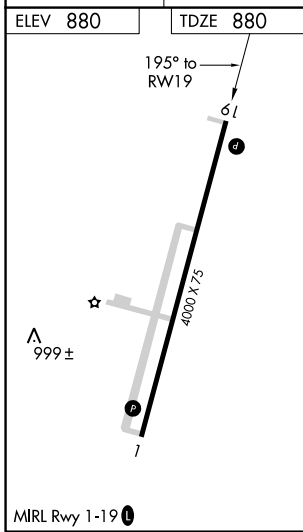
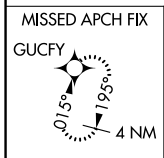
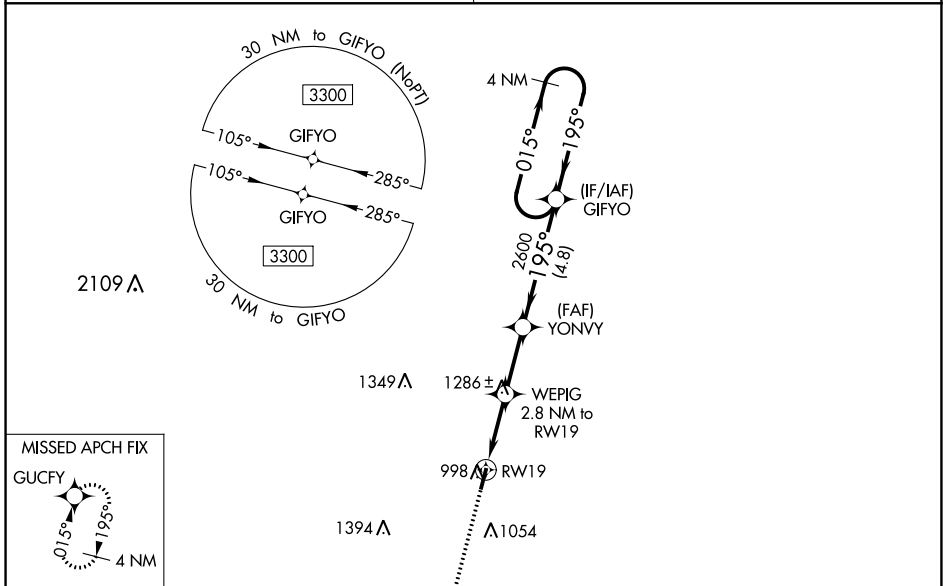
RNAV (GPS) RWY 19

A PAUL VANCE FREDERICKTOWN RGNL (H88)

⚠ Baro-VNAV NA. DME/DME RNP-0.3 NA. Rwy 19 helicopter visibility reduction below 3/4 SM NA. Use Farmington altimeter setting; when not received, use Sparta altimeter setting and increase all DA 111 feet, all MDA 120 feet, LPV all Cats visibility 3/8 mile, LNAV/VNAV all Cats visibility 1/2 mile, LNAV Cat B visibility 1/4 mile and Cat C visibility 1/2 mile and increase Circling all Cats visibility 1/4 mile.

⚠ MISSED APPROACH: Climb to 3300 direct GUCFY and hold.

KANSAS CITY CENTER 127.475 346.275	UNICOM 122.8 (CTAF) 0
--	---------------------------------



CATEGORY	A	B	C	D
LPV DA	1166-1 286 (300-1)			NA
LNAV/VNAV DA	1536-2 1/4 656 (700-2 1/4)			NA
LNAV MDA	1580-1	700 (700-1)	1580-2 700 (700-2)	NA
C CIRCLING	1580-1	700 (700-1)	1640-2 1/4 760 (800-2 1/4)	NA

NC-3, 22 FEB 2024 to 21 MAR 2024

NC-3, 22 FEB 2024 to 21 MAR 2024

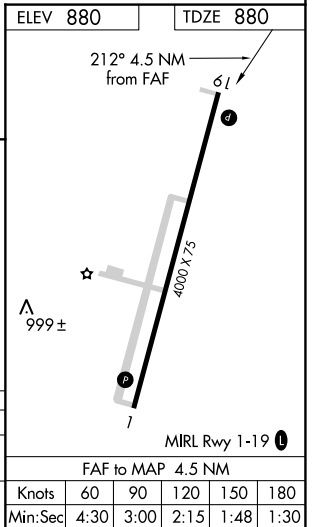
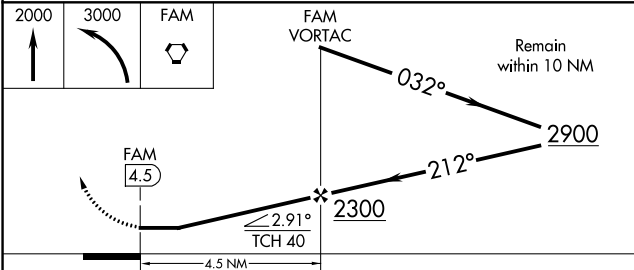
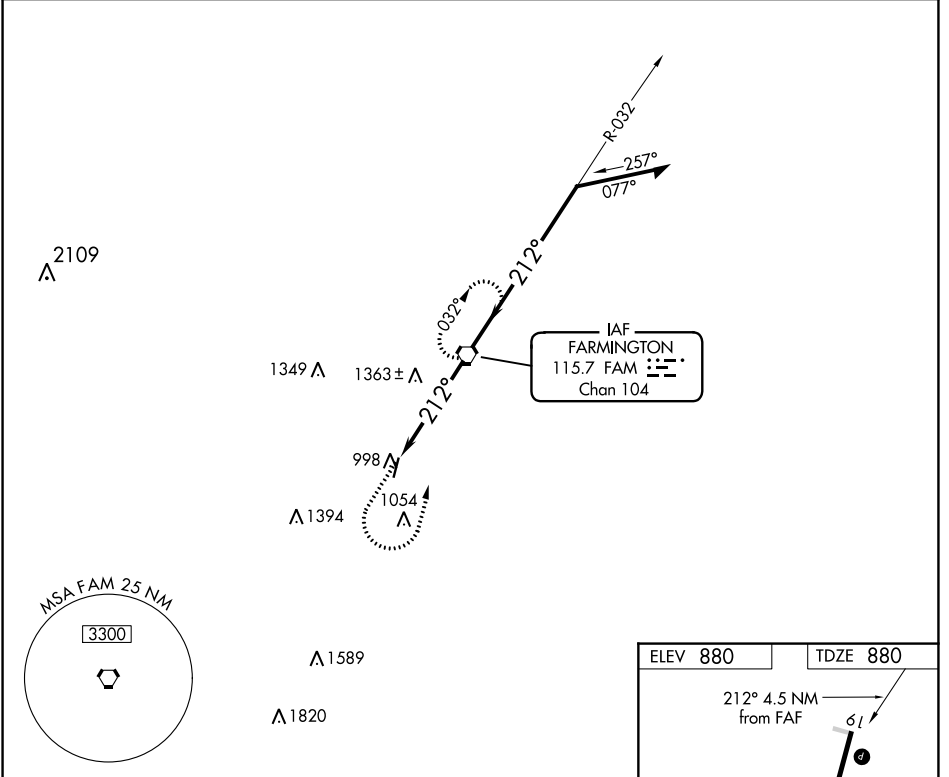
VORTAC FAM 115.7 Chan 104	APP CRS 212°	Rwy ldg 4000 TDZE 880 Apt Elev 880
---	------------------------	---

VOR RWY 19

A PAUL VANCE FREDERICKTOWN RGNL (H88)

<p>V Use Farmington Rgnl altimeter setting. NA Rwy 19 helicopter visibility reduction below ¾ SM NA.</p>	<p>MISSED APPROACH: Climb to 2000 then climbing left turn to 3000 direct FAM VORTAC and hold.</p>
--	---

<p>KANSAS CITY CENTER 127.475 346.275</p>	<p>UNICOM 122.8 (CTAF)</p>
--	---------------------------------------



CATEGORY	A	B	C	D
S-19	1660-1 780 (800-1)	1660-1¼ 780 (800-1¼)		NA
C CIRCLING	1660-1 780 (800-1)	1660-1¼ 780 (800-1¼)		NA

VOR RWY 19

NC-3, 22 FEB 2024 to 21 MAR 2024

NC-3, 22 FEB 2024 to 21 MAR 2024

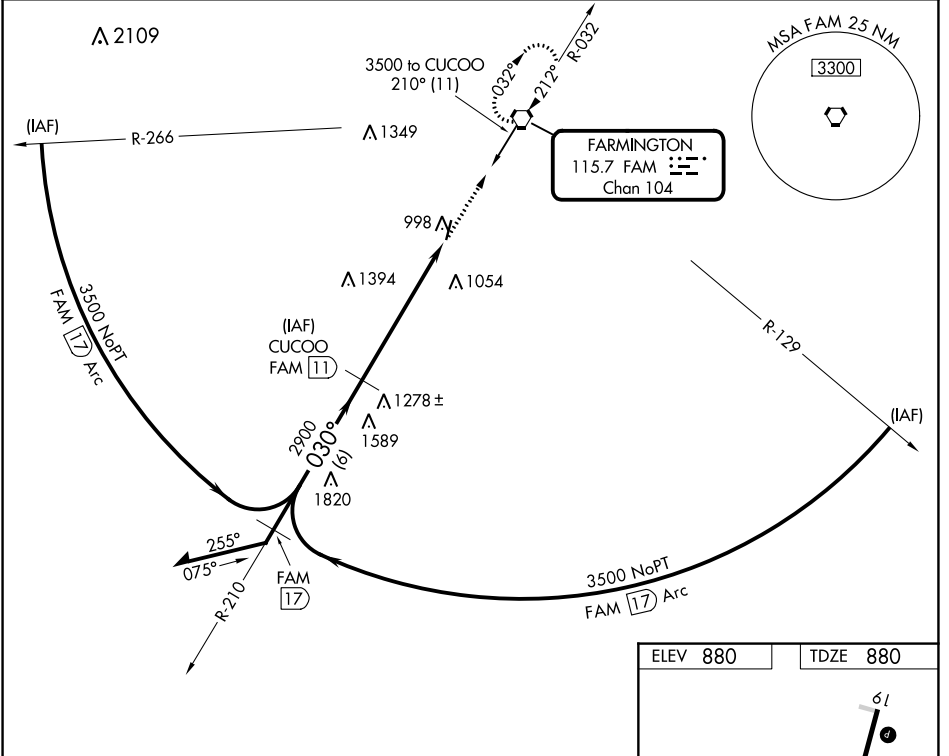
VORTAC FAM 115.7 Chan 104	APP CRS 030°	Rwy Idg 4000 TDZE 880 Apt Elev 880
---	------------------------	---

VOR/DME RWY 1

A PAUL VANCE FREDERICKTOWN RGNL (H88)

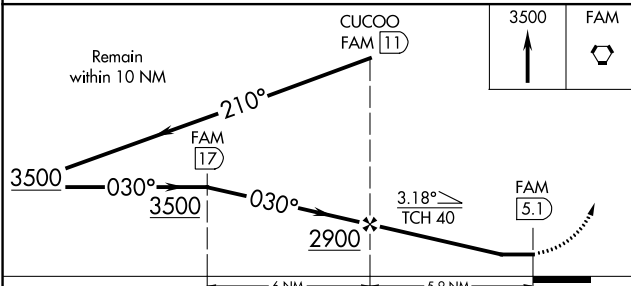
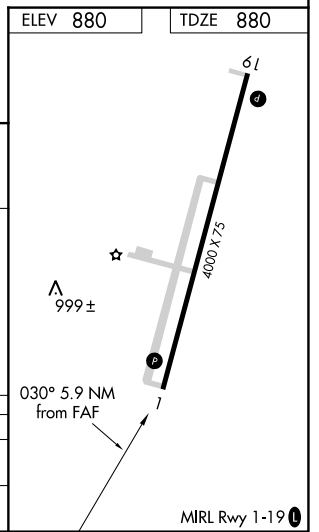
NA Use Farmington Rgnl altimeter setting.	MISSED APPROACH: Climb to 3500 direct FAM VORTAC and hold.
--	--

KANSAS CITY CENTER 127.475 346.275	UNICOM 122.8 (CTAF)
--	-------------------------------



NC-3, 22 FEB 2024 to 21 MAR 2024

NC-3, 22 FEB 2024 to 21 MAR 2024



CATEGORY	A	B	C	D
S-1	1500-1	620 (700-1)		NA
C CIRCLING	1500-1 620 (700-1)	1520-1 640 (700-1)		NA

VOR/DME RWY 1