

WAAS CH 69331 W12A	APP CRS 124°	Rwy Idg TDZE Apt Elev	3601 1748 1748
--	------------------------	-----------------------------	---

RNAV (GPS) RWY 12

HUNTSVILLE MUNI (H34)

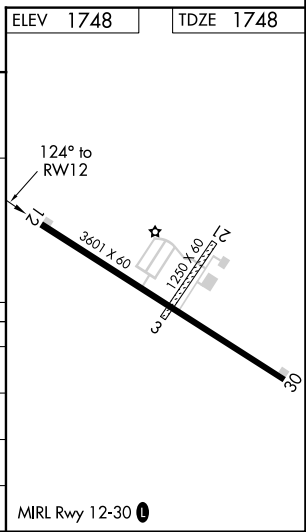
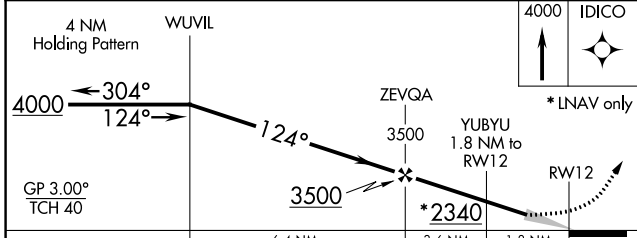
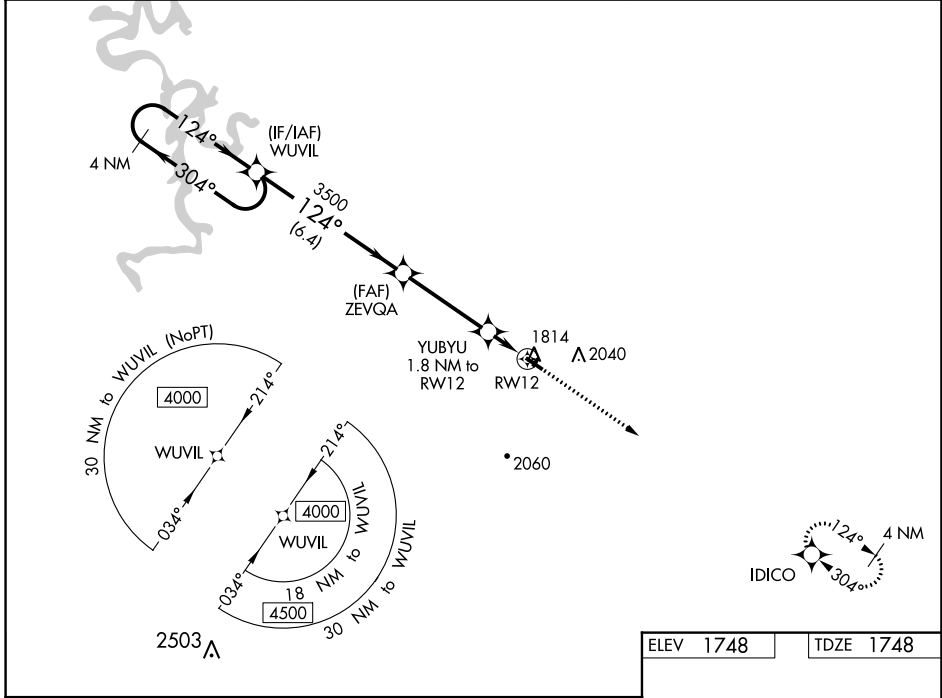
RNP APCH - GPS.

▼ Baro-VNAV NA. Use Springdale altimeter setting; when not received, use Drake Fld altimeter setting and increase all DA 18 feet and all MDA 20 feet; increase LPV all Cats, LNAV/VNAV all Cats and LNAV Cat C visibilities ½ mile. Circling NA to Rwy's 3 and 21.

▲ NA

MISSED APPROACH:
Climb to 4000 direct
IDICO and hold.

ASG AWOS-3 124.675	RAZORBACK APP CON ★ 126.6 305.2	UNICOM 122.8 (CTAF) 0
------------------------------	---	---------------------------------



CATEGORY	A	B	C	D
LPV DA	2097-1 1/8 349 (400-1 1/8)			NA
LNAV/VNAV DA	2097-1 1/8 349 (400-1 1/8)			NA
LNAV MDA	2180-1	432 (500-1)	2180-1 1/4 432 (500-1 1/4)	NA
C CIRCLING	2280-1 532 (600-1)	2520-1 772 (800-1)	2520-2 1/4 772 (800-2 1/4)	NA

SC-1, 16 JUN 2022 to 14 JUL 2022

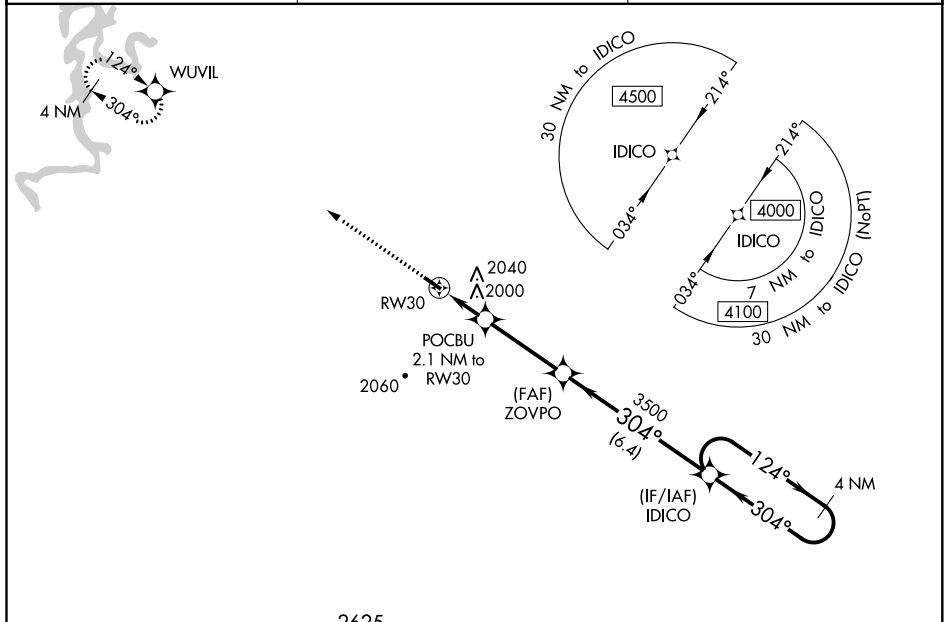
SC-1, 16 JUN 2022 to 14 JUL 2022

WAAS CH 40231 W30A	APP CRS 304°	Rwy Idg TDZE Apt Elev	3601 1748 1748
--	------------------------	-----------------------------	---

RNAV (GPS) RWY 30

HUNTSVILLE MUNI (H34)

RNP APCH - GPS.		MISSED APPROACH: Climb to 4000 direct WUVIL and hold.	
<p>▼ Baro-VNAV NA. Use Springdale altimeter setting; when not received, use Drake Fld altimeter setting and increase all DA 18 feet and all MDA 20 feet; increase LNAV/VNAV all Cats visibility ¼ mile. Circling NA to Rwys 3 and 21.</p> <p>▲ NA</p>	ASG AWOS-3 124.675	RAZORBACK APP CON * 126.6 305.2	UNICOM 122.8 (CTAF) 0



ELEV 1748	TDZE 1748	<p>▲ 2625</p> <p>4000 WUVIL</p> <p>*LNAV only</p> <p>POCBU 2.1 NM to RWY 30</p> <p>RWY 30</p> <p>ZOVPO 3500</p> <p>IDICO 4 NM Holding Pattern</p> <p>124° → 4000</p> <p>← 304°</p> <p>GP 3.00° TCH 40</p> <p>2.1 NM 3.3 NM 6.4 NM</p>			