

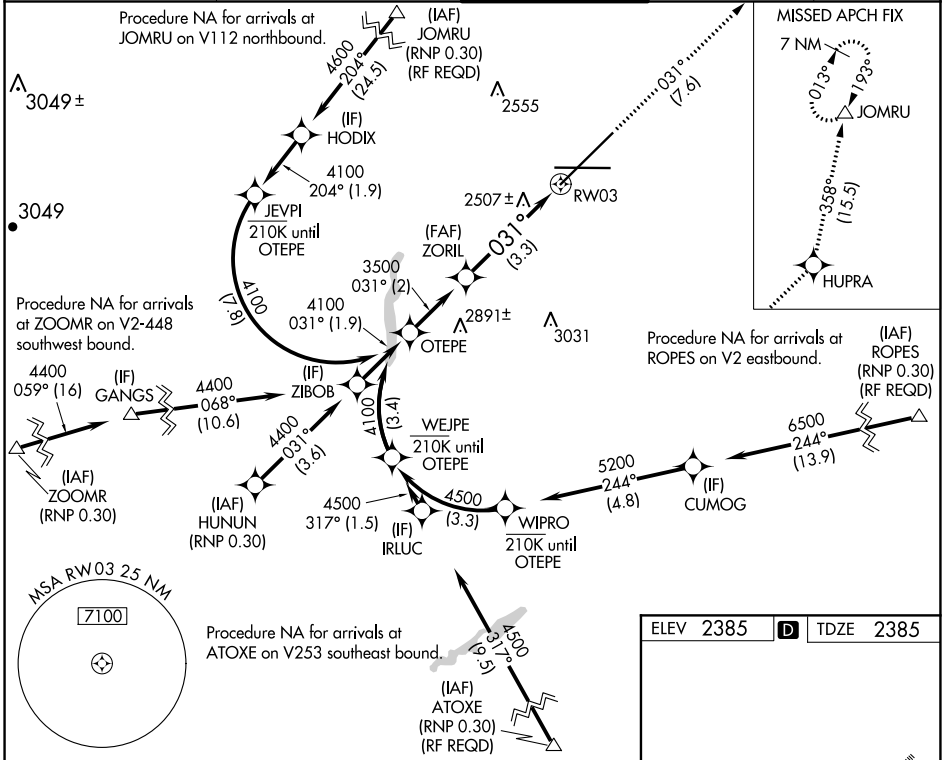
RNAV (RNP) Z RWY 3

SPOKANE INTL (GEG)

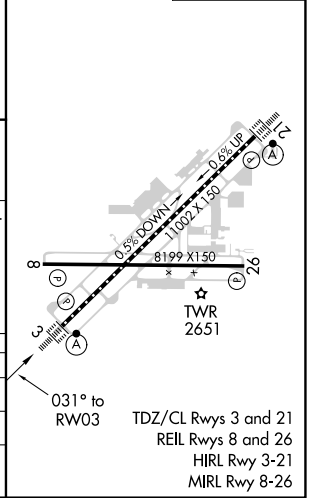
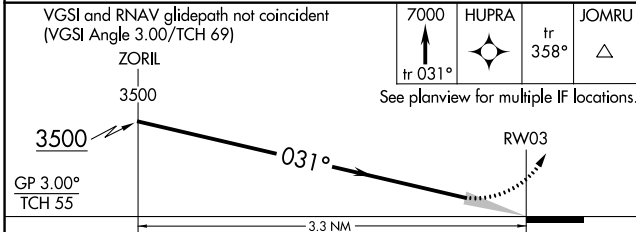
APP CRS	Rwy Idg	11002
031°	TDZE	2385
	Apt Elev	2385

RNP AR APCH.	ALSF-2	MISSED APPROACH: Climb to 7000 on track 031° to HUPRA and on track 358° to JOMRU and hold.
<p>▼ For uncompensated Baro-VNAV systems, procedure NA below -18°C or above 53°C.</p>		

ATIS	SPOKANE APP CON	SPOKANE TOWER	GND CON	CLNC DEL
124.325 254.375	123.75 282.25 (205°-025°) 133.35 263.0 (026°-204°)	118.3 278.3	121.9 348.6	127.55



ELEV 2385	D	TDZE 2385
-----------	----------	-----------



CATEGORY	A	B	C	D
RNP 0.11 DA		2716/26	331 (400-½)	
RNP 0.30 DA		2842/45	457 (500-¾)	

AUTHORIZATION REQUIRED

NW-1, 22 FEB 2024 to 21 MAR 2024

NW-1, 22 FEB 2024 to 21 MAR 2024