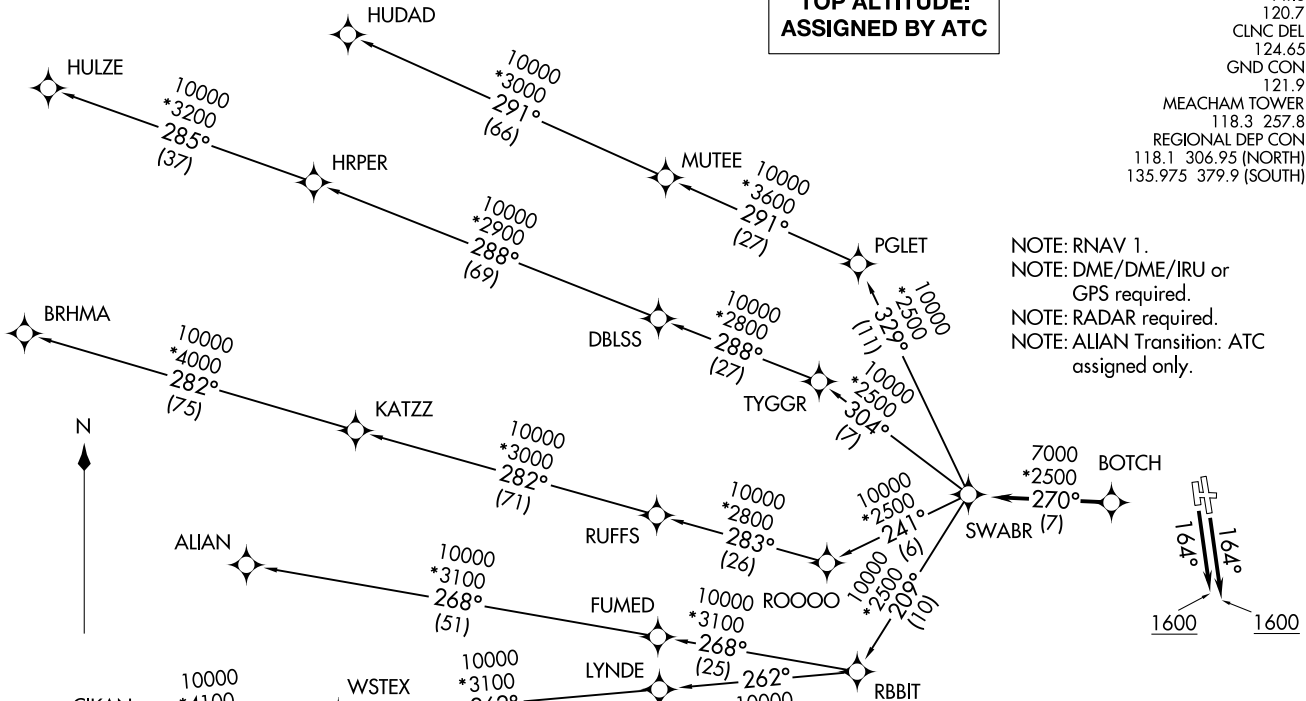


**TOP ALTITUDE:
ASSIGNED BY ATC**

ATIS 120.7
CLNC DEL 124.65
GND CON 121.9
MEACHAM TOWER 118.3 257.8
REGIONAL DEP CON 118.1 306.95 (NORTH)
135.975 379.9 (SOUTH)

NOTE: RNAV 1.
NOTE: DME/DME/IRU or GPS required.
NOTE: RADAR required.
NOTE: ALIAN Transition: ATC assigned only.



TAKEOFF MINIMUMS *3100
Rwys 16, 17: Standard. (25)

Rwy 34: 300-2 or standard with minimum climb of 225' per NM to 1100, or alternatively, with standard takeoff minimums and a normal 200' per NM climb gradient, takeoff must occur no later than 2000' prior to DER.

Rwy 35: 300-1¼ or standard with minimum climb of 210' per NM to 900, or alternatively, with standard takeoff minimums and a normal 200' per NM climb gradient, takeoff must occur no later than 1200' prior to DER.

NOTE: Chart not to scale.

(NARRATIVE ON FOLLOWING PAGE)

SWABR ONE DEPARTURE (RNAV)
(SWABR1 .SWABR) 24MAR22

FORT WORTH, TEXAS
FORT WORTH MEACHAM INTL (F'WV)

(SWABR1 .SWABR) 22083
SWABR ONE DEPARTURE (RNAV)

AL-159 (FAA)
FORT WORTH, TEXAS
FORT WORTH MEACHAM INTL (F'WV)

SWABR ONE DEPARTURE (RNAV)



DEPARTURE ROUTE DESCRIPTION

TAKEOFF RUNWAYS 16, 17: Climb on heading 164° to 1600 before proceeding on course.

When entering controlled airspace, fly heading assigned by ATC, expect vectors to BOTCH, then on track 270° to SWABR, then on assigned transition. Maintain ATC assigned altitude, expect filed altitude 10 minutes after departure.

ALIAN TRANSITION (SWABR1.ALIAN)

BRHMA TRANSITION (SWABR1.BRHMA)

CIKAN TRANSITION (SWABR1.CIKAN)

DOSXX TRANSITION (SWABR1.DOSXX)

HUDAD TRANSITION (SWABR1.HUDAD)

HULZE TRANSITION (SWABR1.HULZE)

WSTEX TRANSITION (SWABR1.WSTEX)

SC-2, 22 FEB 2024 to 21 MAR 2024

SC-2, 22 FEB 2024 to 21 MAR 2024