

FORT SILL, OKLAHOMA

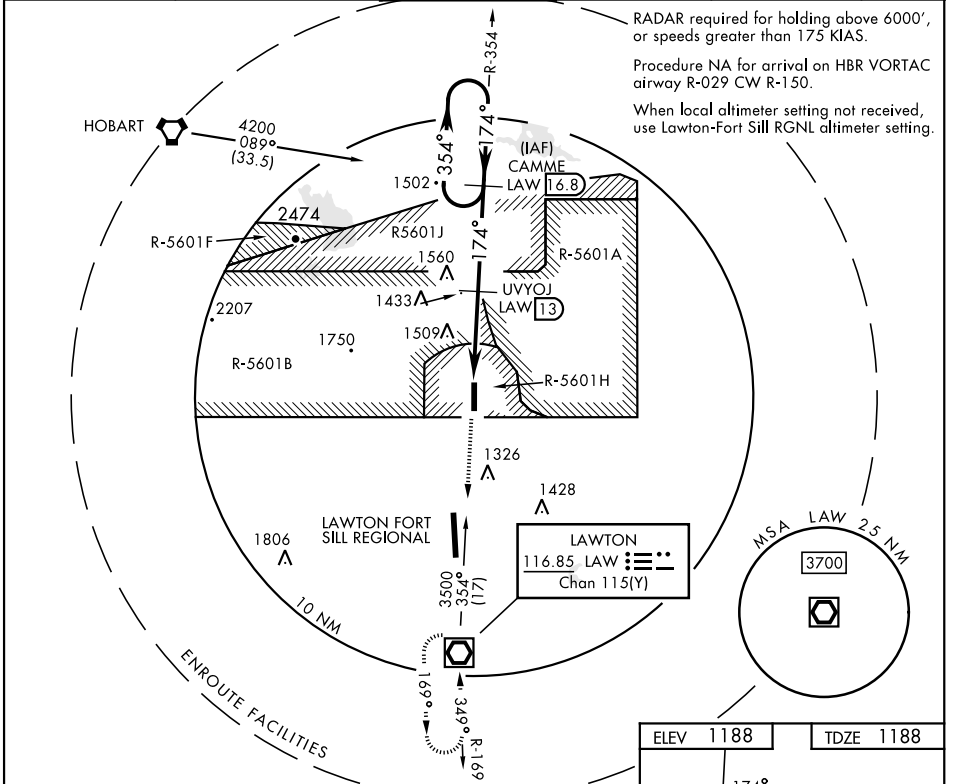
VOR RWY 18

VOR/DME LAW 116.85 Chan 115(Y)	APCH CRS 174°	Rwy ldg TDZE 1188 Arprt Elev 1188
--	-------------------------	---

[USA]

HENRY POST AAF (KFSI)

DME required		MISSED APPROACH: Climb straight ahead to 3000 direct to LAW VOR/DME and hold.			
ATIS 135.425 354.025	FORT SILL APP CON 120.55 322.4	POST TOWER ★(CTAF) 124.95 0 229.4	GND CON 121.7 279.575	CLNC DEL 121.7 279.575	ASR



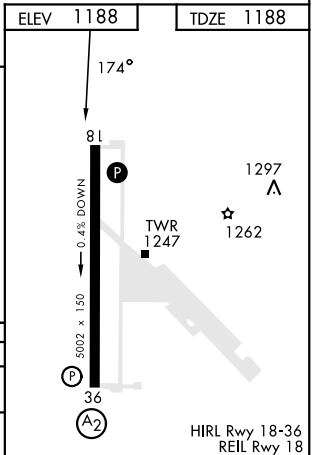
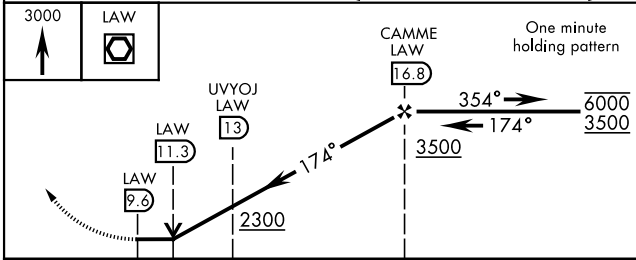
RADAR required for holding above 6000', or speeds greater than 175 KIAS.

Procedure NA for arrival on HBR VORTAC airway R-029 CW R-150.

When local altimeter setting not received, use Lawton-Fort Sill RGNL altimeter setting.

SC-1, 22 FEB 2024 to 21 MAR 2024

SC-1, 22 FEB 2024 to 21 MAR 2024



CATEGORY	A	B	C	D
S-18	1760-1 572 (600-1)		1760-1½ 572 (600-1½)	
CIRCLING	1760-1 572 (600-1)		1820-1¾ 632 (700-1¾) 732 (800-2¼)	1920-2¼ 732 (800-2¼)

FORT SILL, OKLAHOMA
Amdt 2 10AUG23

34° 39' N-98° 24' W

HENRY POST AAF (KFSI)

VOR RWY 18