

WAAS CH 90235 W15A	APP CRS 150°	Rwy Idg TDZE Apt Elev	8000 1429 1430
----------------------------------------	------------------------	-----------------------------	-------------------------------------------

RNAV (GPS) RWY 15

JOE FOSS FLD (FSD)

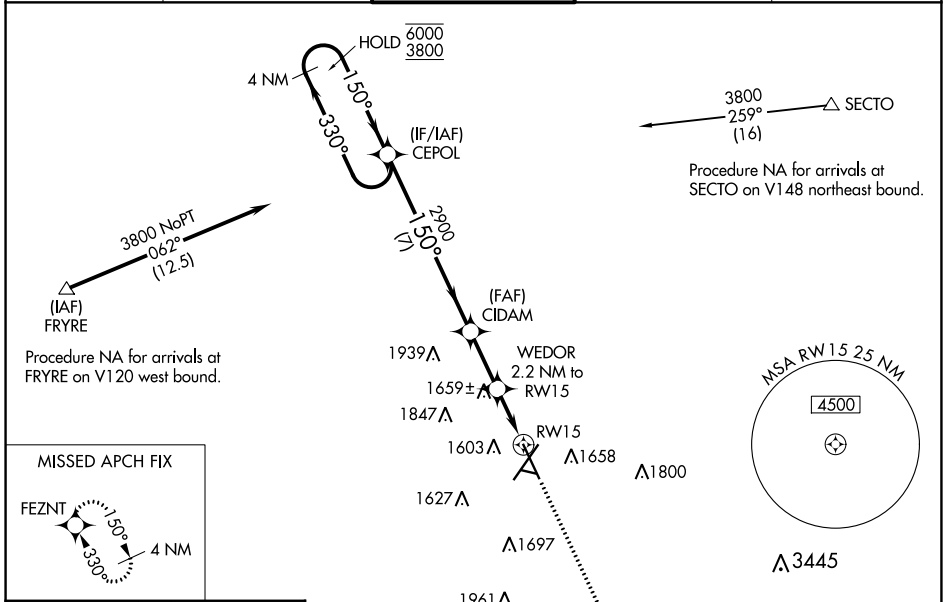
RNP APCH-GPS.

ASR -31°C

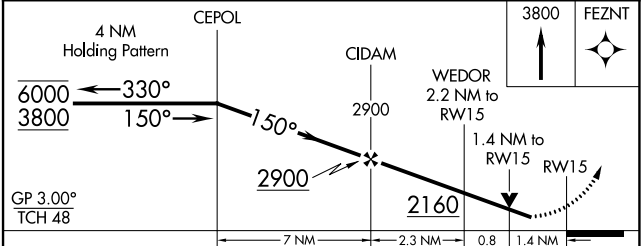
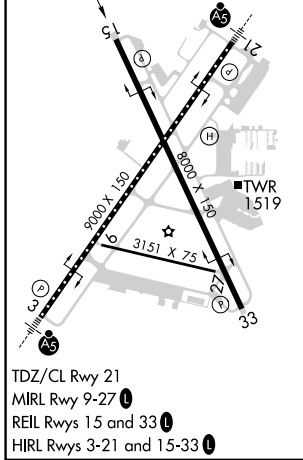
Rwy 15 helicopter visibility reduction below 3/4 SM NA. For uncompensated Baro-VNAV systems, LNAV/VNAV NA below -21°C or above 54°C.

MISSED APPROACH: Climb to 3800 direct FEZNT and hold.

ATIS 126.6	SIoux FALLS APP CON* 125.8 306.2	SIoux FALLS TOWER* 118.3 (CTAF) 257.8	GND CON 121.9 348.6	UNICOM 122.95
----------------------	--------------------------------------------	--------------------------------------------------------	-------------------------------	-------------------------



ELEV 1430	D	TDZE 1429
-----------	----------	-----------



CATEGORY	A	B	C	D
LPV DA		1839-1 1/8	410 (500-1 1/8)	
LNAV/VNAV DA		1909-1 3/8	480 (500-1 3/8)	
LNAV MDA	1920-1	491 (500-1)	1920-1 3/8	491 (500-1 3/8)
C CIRCLING	1960-1 530 (600-1)	1980-1 550 (600-1)	2060-1 3/4 630 (700-1 3/4)	2200-2 1/2 770 (800-2 1/2)

NC-1, 22 FEB 2024 to 21 MAR 2024

NC-1, 22 FEB 2024 to 21 MAR 2024