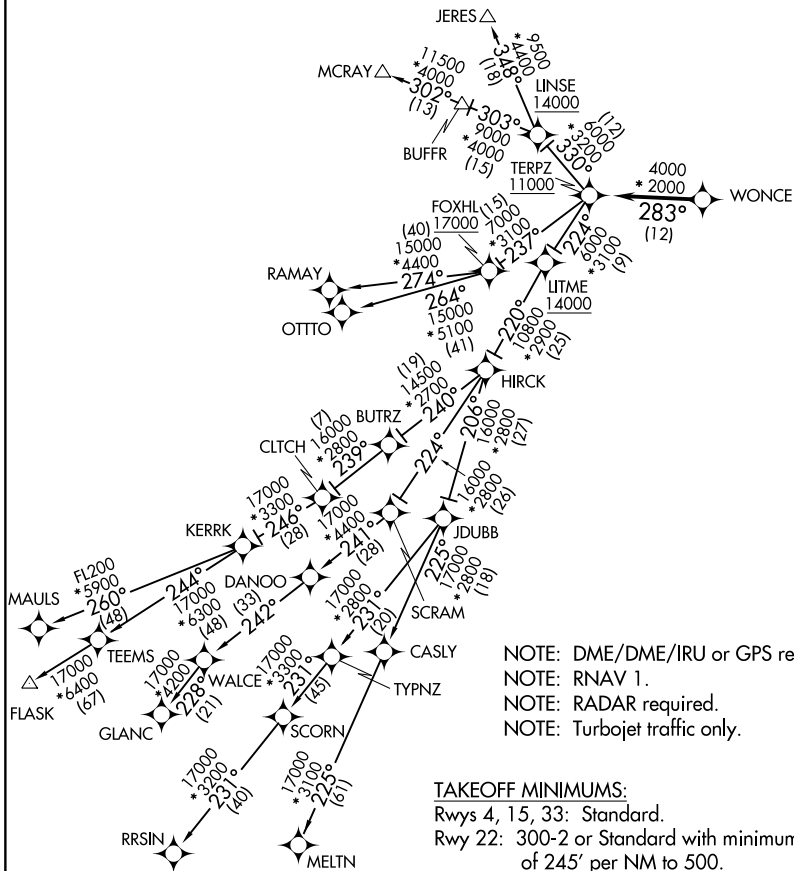


TERPZ SEVEN DEPARTURE (RNAV)

EASTON, MARYLAND

ATIS
 124.475
 CLNC DEL
 119.075
 GND CON
 119.075
 EASTON TOWER ★
 118.525 (CTAF)
 POTOMAC DEP CON
 133.75 254.35

TOP ALTITUDE:
RAMAY, OTTTO, MAULS, FLASK,
RRSIN, GLANC, MELTN
TRANSITIONS: 17000
JERES, MCRAY TRANSITIONS:
16000



NOTE: DME/DME/IRU or GPS required.
 NOTE: RNAV 1.
 NOTE: RADAR required.
 NOTE: Turbojet traffic only.

TAKEOFF MINIMUMS:

Rwys 4, 15, 33: Standard.
 Rwy 22: 300-2 or Standard with minimum climb of 245' per NM to 500.

NOTE: Chart not to scale.

TERPZ SEVEN DEPARTURE (RNAV)

(TERPZ7.TERPZ) 26MAR20

EASTON, MARYLAND

EASTON/NEWNAM FLD (ESN)

NE-3, 22 FEB 2024 to 21 MAR 2024

NE-3, 22 FEB 2024 to 21 MAR 2024

TERPZ SEVEN DEPARTURE (RNAV)



DEPARTURE ROUTE DESCRIPTION

Fly heading and maintain altitude assigned by ATC, expect RADAR vectors to WONCE, then on track 283° to cross TERPZ at or above 11000, thence. . . .

. . . on assigned transition: Departures on JERES and MCRAY transitions maintain 16000. Departures on RAMAY, OTTTO, MAULS, FLASK, MELTN, RRSIN, GLANC transitions maintain 17000, expect further clearance to filed altitude within 10 minutes after departure.

- FLASK TRANSITION (TERPZZ.FLASK)
- GLANC TRANSITION (TERPZZ.GLANC)
- JERES TRANSITION (TERPZZ.JERES)
- MAULS TRANSITION (TERPZZ.MAULS)
- MCRAY TRANSITION (TERPZZ.MCRAY)
- MELTN TRANSITION (TERPZZ.MELTN)
- OTTTO TRANSITION (TERPZZ.OTTTO)
- RAMAY TRANSITION (TERPZZ.RAMAY)
- RRSIN TRANSITION (TERPZZ.RRSIN)

NE-3, 22 FEB 2024 to 21 MAR 2024

NE-3, 22 FEB 2024 to 21 MAR 2024